

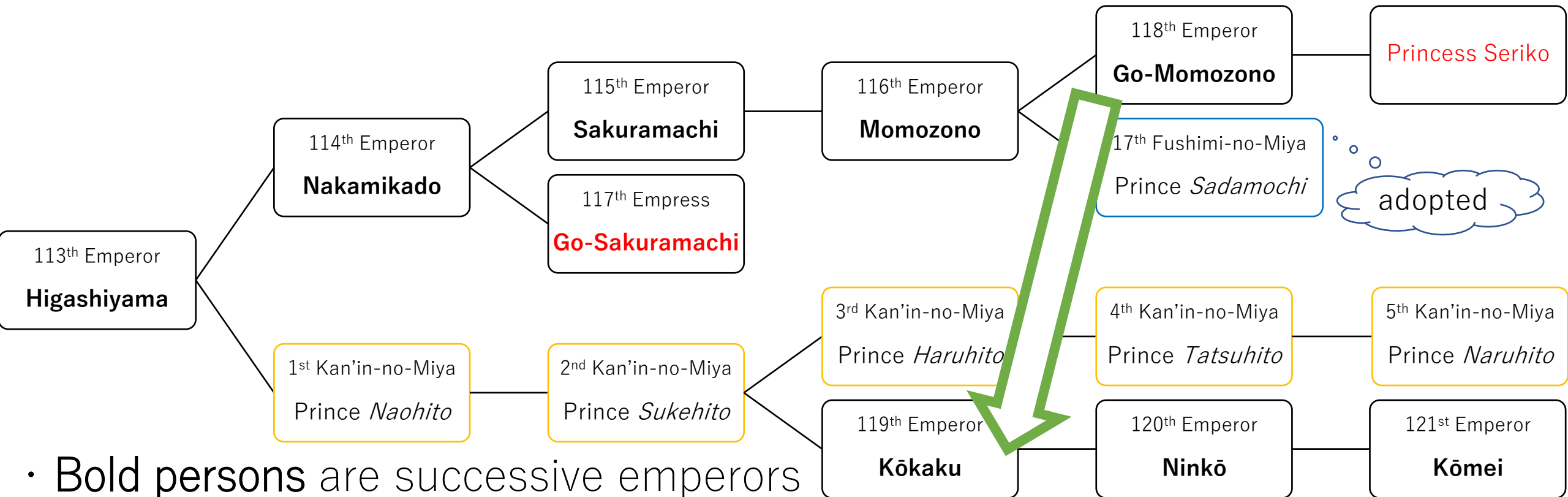
# Current State and Problems of Academic Research on the Imperial Family of Japan in the 21<sup>st</sup> Century

Hirohito TSUJI (辻 博仁)

PhD Candidate, University of East Anglia

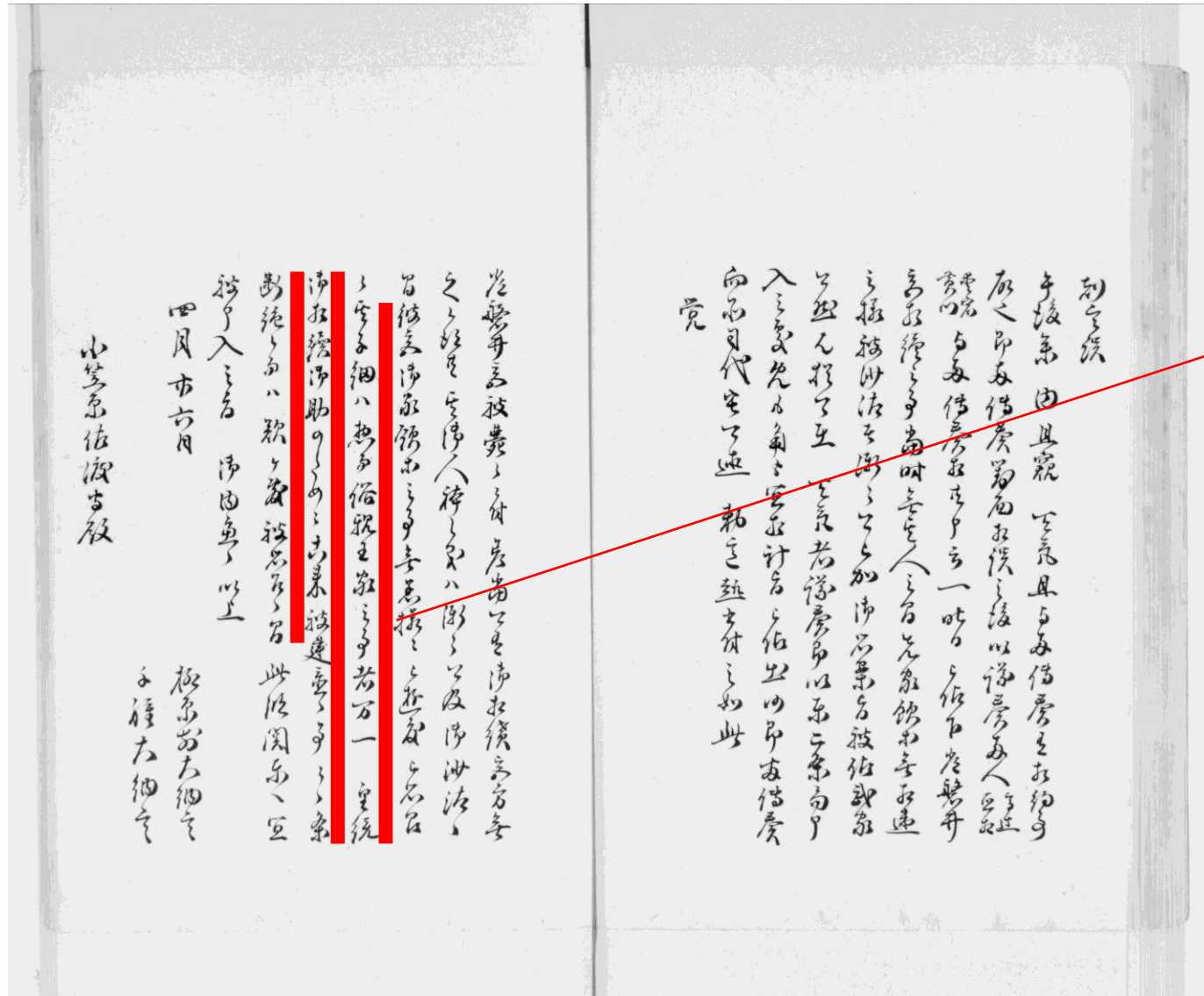
[h.tsuji@uea.ac.uk](mailto:h.tsuji@uea.ac.uk)

# An example of relationship between the Imperial House (main family) and *Miyake* (branch families)



- **Bold persons** are successive emperors
- *Italic persons* are successive heads of each mitake
- **Red persons** are females

# Primary resource in *kuzushi-ji*

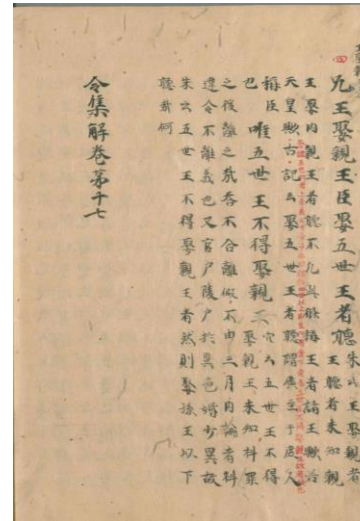


其子細ハ、惣而俗親王家之事者、萬一 皇  
統御相續のためニ古來被ニ建置一候事ニ  
候條、斷絶候而ハ、歎个敷被ニ思召一候間、

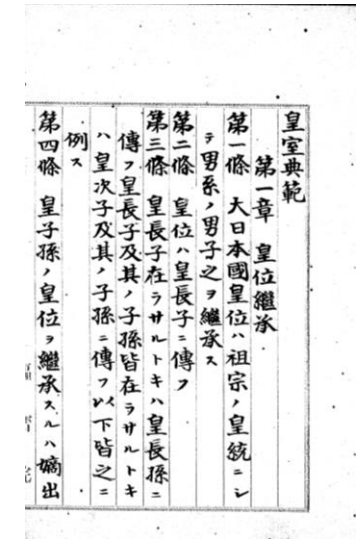
(Since ancient times, *miyake* has been existed to produce a successor to the Chrysanthemum Throne in the event of a contingency in the Imperial-line. H.I.M. the Former Emperor deploras if these are abolished.)

# When was the beginning of the modern period?

- 1840s Tempō Reforms?
- 1853 Perry Expedition?
- 1867 Meiji Restoration?
- 1869 Designation of Tokyo as Capital?
- 1871 Abolition of the *Han* System?
- 1877 Satsuma Rebellion?
- 1881 Imperial Rescript of the Diet Establishment?



Yōrō Code



Imperial House Law

※ Yōrō Code (in 757) was living until establishment of Meiji Imperial House Law (in 1889)

# Dual Structure of the Japan's Family Concept

## *uji* 氏 (clans) = succession

- Clan name *sei* 姓
- Male-line lineage (in the main family)  
=dynastic continuity (in monarchs)
- Ancestral rituals
  
- Father-line lineage is must
- Abilities are not required

## *ie* 家 (households) = inheritance

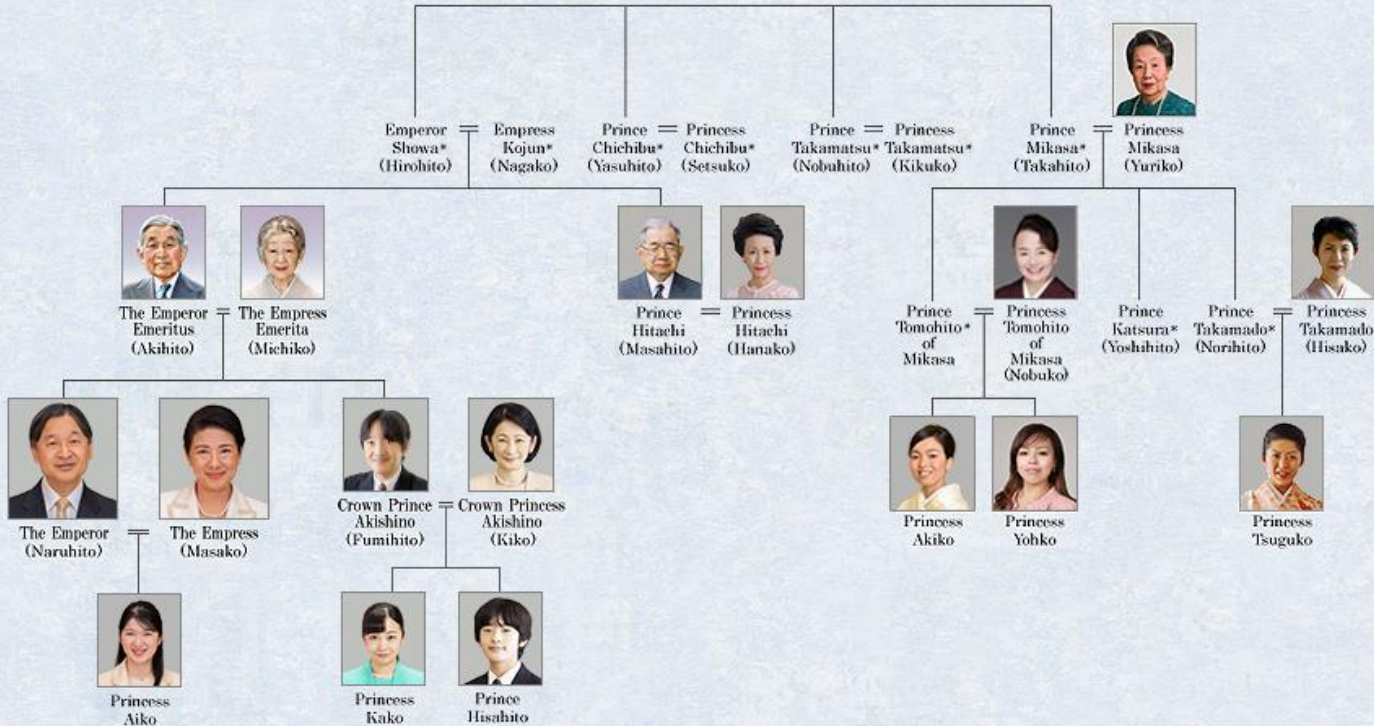
- family name *myōji* 苗字 (or *yagō* 屋号)
- Family status (positions, court rank)
- Family jobs
- Properties (money, home, territory, etc)
  
- Male-line, female-line, bilateral descent, adoption, whatever
- Sometimes abilities are important



# Current issue for the Imperial succession

## Genealogy of the Imperial Family

\*Deceased.



## Line of the Imperial Succession

1. H.I.H. Crown Prince Fumihito of Akishino  
皇嗣秋篠宮文仁親王殿下(1965-)
2. H.I.H. Prince Hisahito  
悠仁親王殿下 (2006-)
3. H.I.H. Prince Masahito of Hitachi  
常陸宮正仁親王殿下 (1935-)

## Living Former *Miyake*

- Higashikuni-no-Miya 旧東久邇宮家
- Kuni-no-Miya 旧久邇宮家
- Kaya-no-Miya 旧賀陽家
- Asaka-no-Miya 旧朝香宮家
- Takeda-no-Miya 旧竹田宮家
- Fushimi-no-Miya 旧伏見宮家

## 17 Members of the Imperial Family

- Princes = 3 (3 *shinnō* 親王, 0 *ō* 王)
- Princesses from the Imperial Family = 5 (2 *naishinnō* 内親王, 3 *joō* 女王)

# Key References

- 浅見雅男 (2012) 『伏見宮 もうひとつの天皇家』 講談社
- 宮内庁書陵部編 (1986) 『皇室制度史料 皇族四』 吉川弘文館
- 高橋紘・所功 (2019) 『皇位継承』 増補改訂版、文藝春秋
- 武部敏夫 (1960) 「世襲親王家の継統について 伏見宮貞行・邦頼両親王の場合」(『書陵部紀要』 12、pp. 42-55)
- 辻博仁 (2019) 「近世期における世襲親王家の維持と女性当主」 國學院大學修士論文
- 所功編 (2012) 『日本の宮家と女性宮家 女性宮家創設と皇位継承問題を解き明かす』 新人物往来社
- 新田均 (2018) 『皇位の継承 今上陛下のご譲位と御代替わりの意義』 明成社
- Antony Best, Ben-Amy Shillony (2006). 'Japanese Monarchy: Past and Present.' The discussion paper of the symposium at the London School of Economics and the Political Science, University of London.
- Donald Keene (2002). *Emperor of Japan: Meiji and His World, 1852-1912*. New York: Columbia University Press.
- Ben-Amy Shillony (2005). *Enigma of the Emperors: Secred Subservience in Japanese History*. Folkestone: Global Oriental.
- Hirohito Tsuji (2023). 'Japan Knowledge: Tennō Kōzoku Jitsuroku, Records of the Emperor and the Imperial Family.' *The Digital Orientalist*.
- Herschell Webb (1968). *The Japanese Imperial Institution in the Tokugawa Period*. New York: Columbia University Press.

Thank you for your attention

御清聴有難うございました。