

PRIVATE EPIGRAPHY IN LATE MEDIEVAL
LONDON: METAL LETTERS ON PERSONAL
POSSESSIONS

Volume II

Olivia Croyle

University of East Anglia

Thesis Submitted for the Degree of PhD, History of Art

Access Condition and Agreement

Each deposit in UEA Digital Repository is protected by copyright and other intellectual property rights, and duplication or sale of all or part of any of the Data Collections is not permitted, except that material may be duplicated by you for your research use or for educational purposes in electronic or print form. You must obtain permission from the copyright holder, usually the author, for any other use. Exceptions only apply where a deposit may be explicitly provided under a stated licence, such as a Creative Commons licence or Open Government licence.

Electronic or print copies may not be offered, whether for sale or otherwise to anyone, unless explicitly stated under a Creative Commons or Open Government license. Unauthorised reproduction, editing or reformatting for resale purposes is explicitly prohibited (except where approved by the copyright holder themselves) and UEA reserves the right to take immediate 'take down' action on behalf of the copyright and/or rights holder if this Access condition of the UEA Digital Repository is breached. Any material in this database has been supplied on the understanding that it is copyright material and that no quotation from the material may be published without proper acknowledgement.



Figure 0.01 Lead-tin 'R' mount, London, Museum of London, SWA81<3881>.



Figure 0.02 Brass 'A', Museum of London, BWB83[306]<741>.

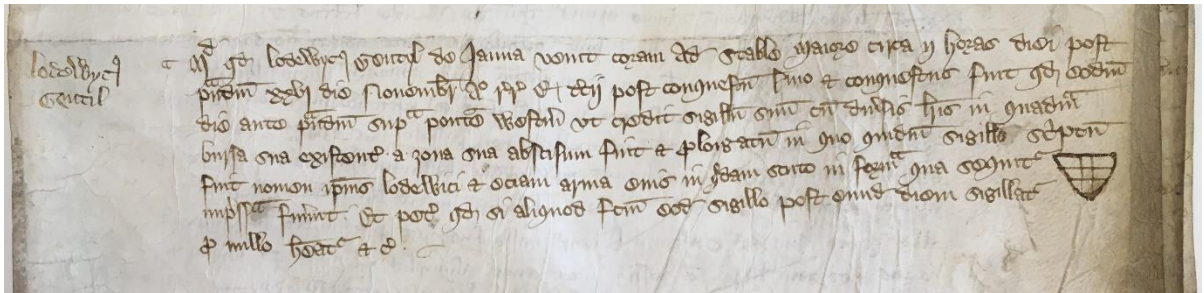


Figure 1.01 Detail from Plea and Memoranda Roll London, London Metropolitan Archives, CLA/024/01/02/023 Membrane 1.



Figure 1.02 St Eloi badge, London, Museum of London, 87.14/2.



Figure 1.03 London, British Library, Additional 47682 Holkham Bible Picture Book c. 1327-1335 (poss. London) f. 31.



Figure 1.04 London, British Library, Harley 2915 Book of Hours, Use of Sarum f. 10 Evangelists.



Figure 1.05 Stylus, London, Museum of London, BWB83[110]<73>.



Figure 1.06 Brooch, London, Museum of London, 80.73/1.



Figure 1.07 Ring, London, Museum of London, 80.33.



Figure 1.08 Pilgrim badge, London, Museum of London, 8790.



Figure 1.09 Purse frame (front), London, Museum of London, 50.2/76.



Figure 1.10 Purse frame (reverse), London, Museum of London, 50.2/76.

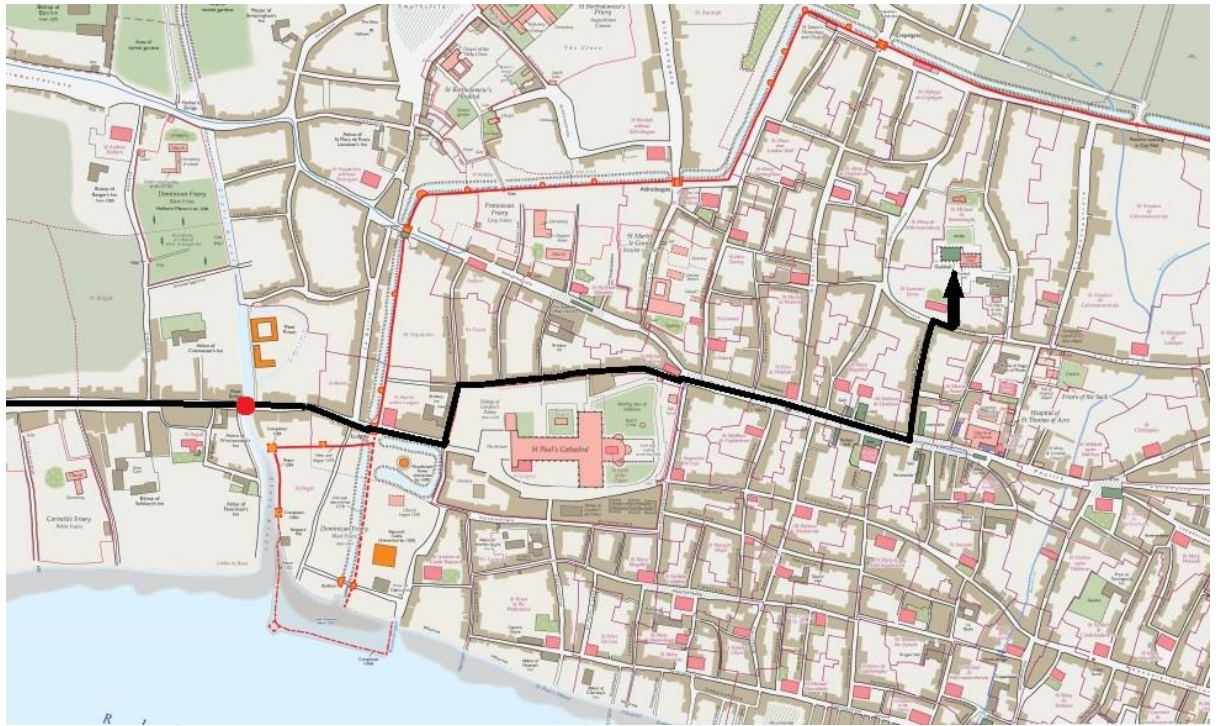


Figure 1.11 Lodewyc's journey from Fleet Bridge to the Guildhall produced using Layers of London overlay map from 1270-1300, 'Layers of London', 11th October 2019, <https://www.layersoflondon.org/map/overlays/medieval-london-1270-1300?overlayGroups=eyJlbmFibGVkIjpbIm1lZGlldmFsLWxvbmRvbi0xMjcwLTEzMDA%3D>



Figure 1.12 London Bridge Plaque, London, Museum of London, 7210.

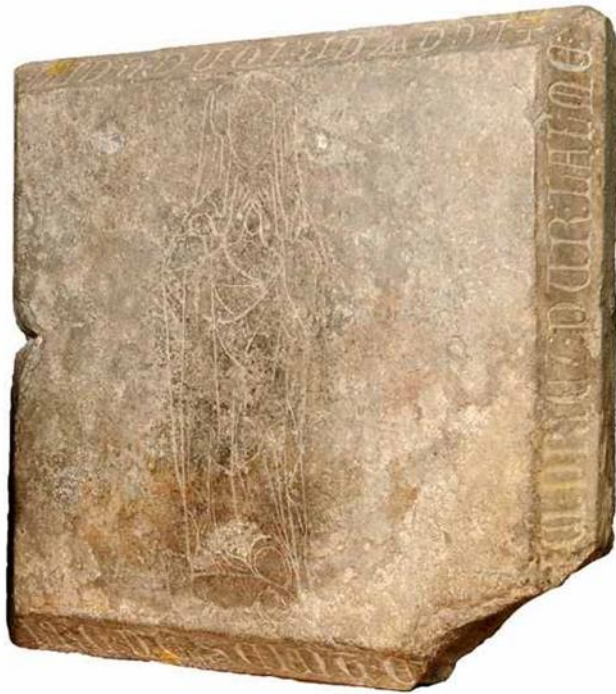


Figure 1.13 St Swithin's Grave Slab, London, Museum of London, 23078.



Figure 1.14 Ceramic floor tile, London, Museum of London, 38205.



Figure 1.15 St Stephens wall paintings London, British Museum, 1814,0312.2.



Figure 1.16 Embroidered panel, London, British Museum, 1919,0305.1.



Figure 1.17 Seal matrix, London, Museum of London, 45.41/1.



Figure 1.18 Seal matrix, London, British Museum, 1852,0405.1.



Figure 1.19 London, British Museum, 1850,0942.2.



Figure 1.20 Seal matrix, London, Museum of London, C2312.

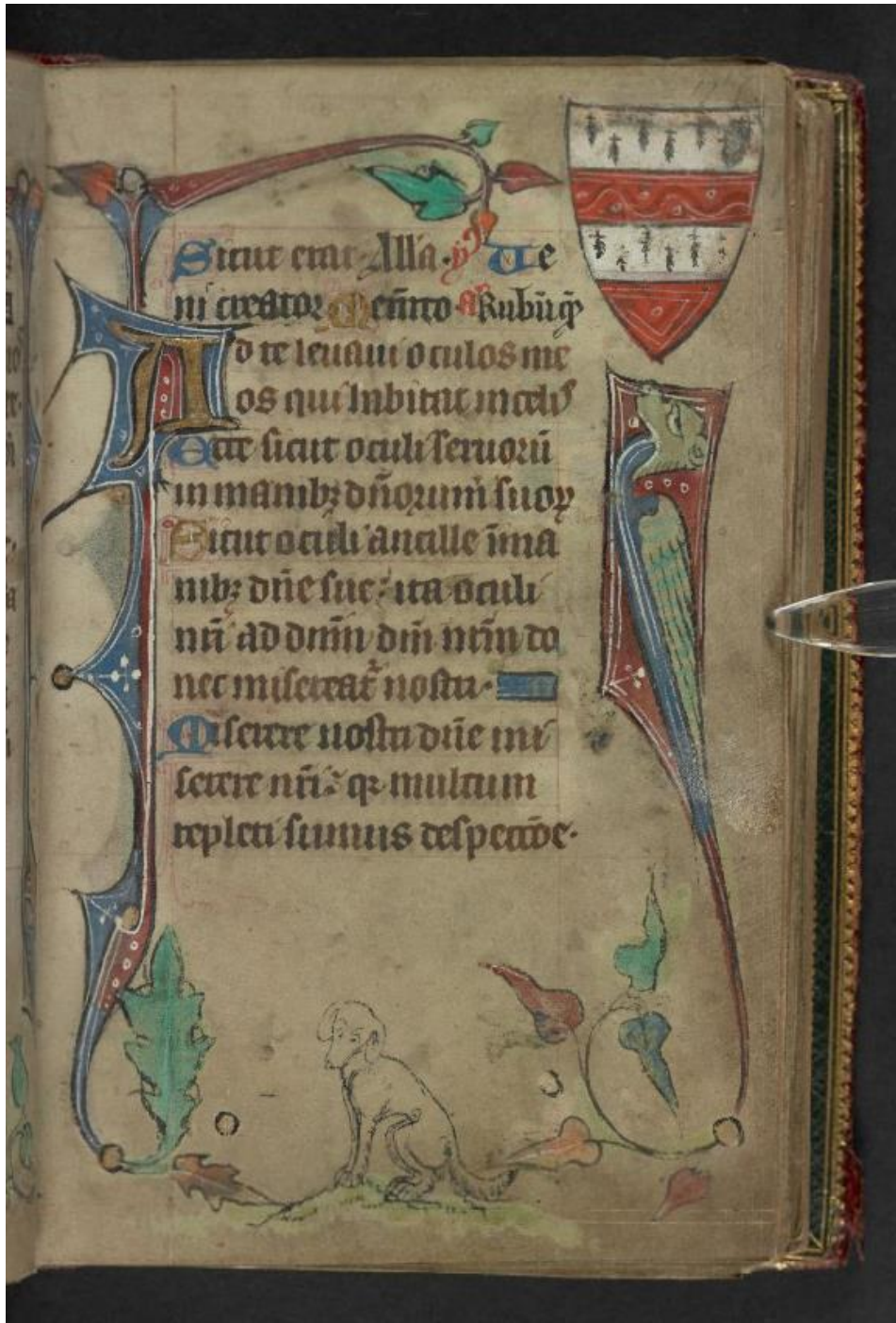


Figure 1.21 London, British Library, Harley MS. 6563, f. 17r.



Figure 1.22 Seal matrix, London, British Museum, 1856,0702.2206.



Figure 1.23 Seal matrix, London, British Museum, 1936,1010.1.

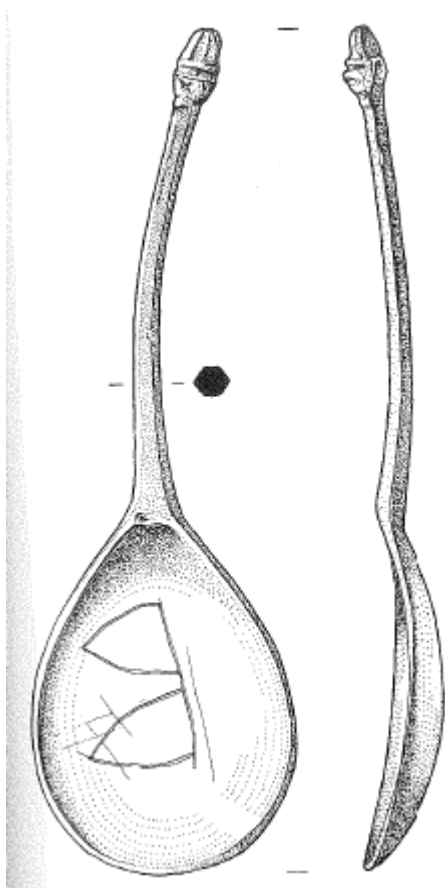


Figure 2.01 Pewter Spoon, London, Museum of London, SWA81[1971]<2109>.



Figure 2.02 Fede Ring, London, British Museum 1857,0928.1.



Figure 2.03 Brooch, London, British Museum, 1929,1111.3.



Figure 2.04 Ring Brooch, London, Museum of London, 89.36.



Figure 2.05 Ring London, Museum of London, 80.229.



Figure 2.06 Ring, London, Museum of London, 86.18/1.



Figure 2.07 Brooch, London, Museum of London, 80.73/1.



Figure 2.08 Purse frame, London, Museum of London, 2003.50.



Figure 2.09 Purse frame, London, Museum of London, A27396.



Figure 2.10 Brooch, Portable Antiquities Scheme, LON-D6A623.



Figure 2.11 Brooch, Portable Antiquities Scheme, SF-52ADB1.



Figure 2.12 Brooch Portable Antiquities Scheme, SF6179.

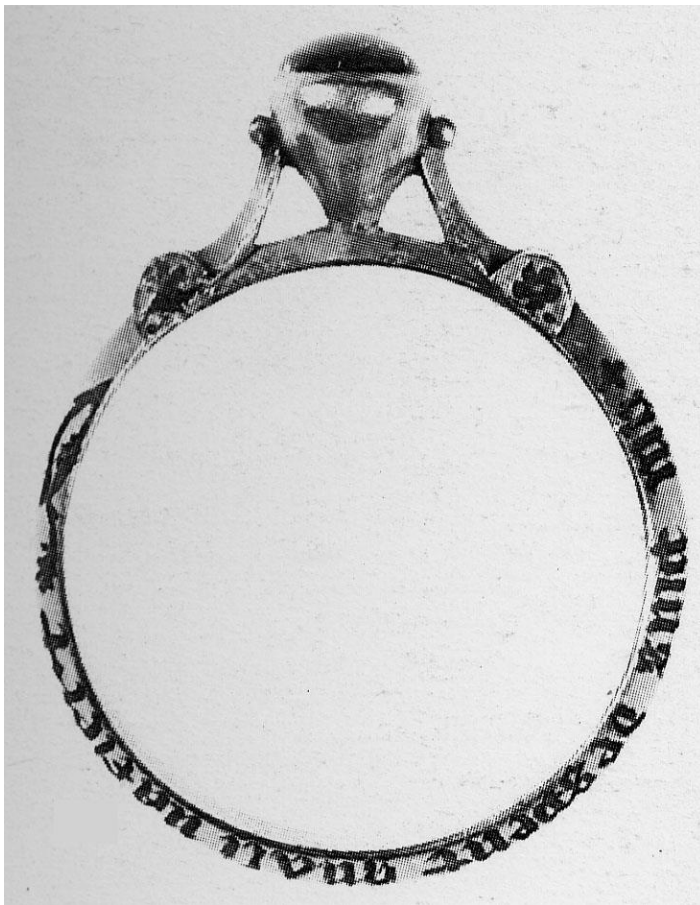


Figure 2.13 Ring, London, British Museum, 1899,0520.2.



Figure 2.14 Annular Brooch, London, British Museum, AF.2683.



Figure 2.15 Brooch, London, British Museum, 1987,0604.1.



Figure 2.18 Inscribed Sword Pommel, London, Museum of London, 2018.11.



Figure 2.19 Silver Brooch, London, Museum of London, BWB[714]<306>.



Figure 2.20 Amulet Ring, London, British Museum, 1961,1202.465.



Figure 2.21 Reliquary Pendant, London, British Museum, AF.2765.



Figure 2.22 Ring, London, British Museum, 1932.0209.1.



Figure 2.23 Ring, London, British Museum, AF.555.



Figure 2.24 Ring, London, British Museum, AF.1005.



Figure 2.25 Brooch, London, Museum of London, BIG82[2591]<2317>.



Figure 2.26 Ring Brooch, London, Victoria & Albert Museum, M.28-1929.



Figure 2.27 Copper Brooch, London, Museum of London, BIG82[5363]<2812>.



Figure 2.28 Sheath Fitting, London, British Museum 1869,0610.1.



Figure 2.29 Seax (detail), London, British Museum, 1857,0623.1.



Figure 2.30 Tombstone, London, Museum of London 4075.



Figure 2.31 Brooch, Portable Antiquities Scheme, LON-2AD03A.



Figure 2.32 Brooch, London, Victoria & Albert Museum, M.48-1975.



Figure 2.33 Brooch, Lincoln, The Collection: Art and Archaeology in Lincolnshire, LCNCC : 2015.38



Figure 2.34 Annular Brooch, London, British Museum, OA.1113



Figure 3.01 CREDE MICH I seals 1:1 scale. Top row from left to right: Copper alloy seal 10 listed in, Brian Spencer, 'Medieval Seal-Dies Recently Found at London', *Antiquaries Journal*, 64.2 (1984); Copper alloy seal matrix, London, British Museum 1865,1220.89; Copper alloy seal matrix, London, Museum of London 84.125. Bottom row from left to right: Copper alloy seal matrix, London, Museum of London 84.184/2; Bronze gilt seal matrix, London, British Museum 1891,0520.2; Copper alloy seal matrix, Portable Antiquities Scheme ID: LON-A3DF27. Middle row right: Copper alloy seal matrix, London, British Museum, 1856,0701.2211.



Figure 3.02 Thirteenth-century tally sticks, London, The National Archives.



Figure 3.03 Seal (medieval forgery) of the Bishop of Alexander, Bishop of Lincoln, London, British Museum, 1856,0701.2190.



Figure 3.04 Cancelled Reigate seal (obverse), London, Museum of London, SWA[2018]<446>.



Figure 3.05 Cancelled Reigate seal (reverse), London, Museum of London, SWA[2018]<446>.



Figure 3.06 Seal matrix, London, British Museum, 1856,0701.2199.



Figure 3.07 Seal matrix, London, British Museum, 1868,0805.28.



Figure 3.08 Copper alloy seal matrix, London, British Museum, 1856,0701.2228.



Figure 3.09 Seal of Clais Van Ende, London, British Museum, 1856,0701.2206.



Figure 3.10 Copper alloy seal matrix, London, British Museum, 1856,0701.2207.



Figure 3.11 Seal 24 listed in Brian Spencer, 'Medieval Seal-Dies Recently Found at London', *Antiquaries Journal*, 64.2 (1984), 381.



Figure 3.12 Seal matrix, London, British Museum, 1880,0624.1.



Figure 3.13 Ampulla, London, Museum of London, 84.407.



Figure 3.14 The Seal of the Mayoralty of London, c. 1276.



Figure 3.15 Copper alloy seal 10 listed in, Brian Spencer, 'Medieval Seal-Dies Recently Found at London', *Antiquaries Journal*, 64.2 (1984), 379.



Figure 3.16 Copper alloy seal matrix, London, Museum of London, 84.125.



Figure 3.17 Bronze gilt seal matrix, London, British Museum, 1891,0520.2.



Figure 3.18 Copper alloy seal matrix, London, British Museum, 1856,0701.2198.



Figure 3.19 Seal 3 listed in, Brian Spencer, 'Medieval Seal-Dies Recently Found at London', *Antiquaries Journal*, 64.2 (1984), 379.



Figure 3.20 Seal 5 listed in, Brian Spencer, 'Medieval Seal-Dies Recently Found at London', *Antiquaries Journal*, 64.2 (1984), 379.



Figure 3.21 Copper alloy seal matrix, London, British Museum, 1856,0701.2201.



Figure 3.22 Copper alloy seal matrix, London, British Museum, 1848,0828.6.



Figure 3.23 Copper alloy seal matrix, London, British Museum, 1856,0701.2226.



Figure 3.24 Copper alloy seal of Walter Bluet, late 14th century British Museum, 1889,1204.3.



Figure 3.25 Copper alloy seal matrix, London, Museum of London, 82.230.



Figure 3.26 Copper alloy seal, London, Museum of London, 8935.



Figure 3.27 Copper alloy seal matrix, London, British Museum, 1865.1220.89.



Figure 3.28 Copper alloy seal matrix, London, Museum of London, 84.184/2.



Figure 3.29 Silver and glass seal matrix, London, British Museum, 1875,0201.2.



Figure 3.30 Silver seal matrix, London, Museum of London, 84.434/1.



Figure 4.01 Thomas Becket badge, London, Museum of London, 86.202/7.



Figure 4.02 Thomas Becket badge, London, Museum of London, 8798.



Figure 4.03 Our Lady of Le Puy badge, London, Museum of London, TEX88[1072]<1028>.



Figure 4.04 Our Lady of Le Puy badge, London, Museum of London, TEX88[1073]<1027>.



Figure 4.05 Souvenir bell, London, Museum of London 8809.



Figure 4.06 Badge, London Museum of London, SWA81[2113]<CP12>.



Figure 4.07 Thomas Becket badge, London, Museum of London, 8807b.

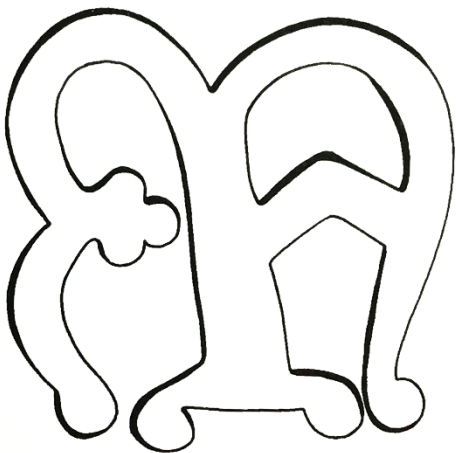


Figure 4.08 Tile number 23.25 listed in, J. Stopford, *Medieval Floor Tiles of Northern England Pattern and Purpose: Production between the Thirteenth and Sixteenth Centuries* (Oxford, 2005), 230.



Figure 4.09 Rood of Grace badge, number 180d Brian Spencer, *Pilgrim Souvenirs and Secular Badges* (Woodbridge, 2010), 164.



Figure 4.10 Our Lady of the Tables badge, London, Museum of London, 91.185.



Figure 4.11 Book of Hours, c. 1460, London, British Library Harley 2887, fols. 28v.-29r (detail).



Figure 4.12 St Anthony's Hospital badge, London, Museum of London, 2009.24/2.



Figure 4.13 St Leger badge, London, Museum of London, 3002.49.



Figure 4.14 St Andrew badge, London, Museum of London, 82.8/9.



Figure 4.15 St Giles badge, London, Museum of London, 84.129/4.



Figure 4.16 John the Baptist badge, London, Museum of London, 79.327/1.



Figure 4.17 Richard Caister badge, London, British Museum, 1836,0610.48.



Figure 4.18 Richard Caister badge, London, Museum of London, 82.314.



Figure 4.19 Richard Caister badge, London, Museum of London, 86.202/18.



Figure 5.01 Lead tin spoon handle, London, Museum of London, BWB83[4635]<299>.



Figure 5.02 Copper alloy purse frame, London, Museum of London, A27396 (obverse).



Figure 5.03 Copper alloy purse frame, London, Museum of London, A27396 (reverse).



Figure 5.04 Lead alloy diptych, London, British Museum, 1852, 0616.1, (obverse).



Figure 5.05 Lead alloy diptych, London, British Museum, 1852, 0616.1, (reverse).



Figure 5.06 Diptych, London, Victoria & Albert Museum, 212-874.



Figure 5.07 Lead alloy mirror case, London, Museum of London, BWB83[130]<257>.



Figure 5.08 Lead alloy mirror case, London, Museum of London, BWB83[130]<257> (detail).



Figure 5.09 Lead alloy whistle, London, Museum of London, TL74[2544]<unstratified>, (obverse).



Figure 5.10 Lead alloy whistle, London, Museum of London TL74[2544]<unstratified>, (reverse).

