

Assessor Support Toolkit

Providing Assessors with Feedback

Key principles

1. Champion



Collaborate with assessment champions to develop a feasible mechanism of assessor feedback

2. Feedback



Provide assessors with both psychometrics and contextualised feedback

3. Community

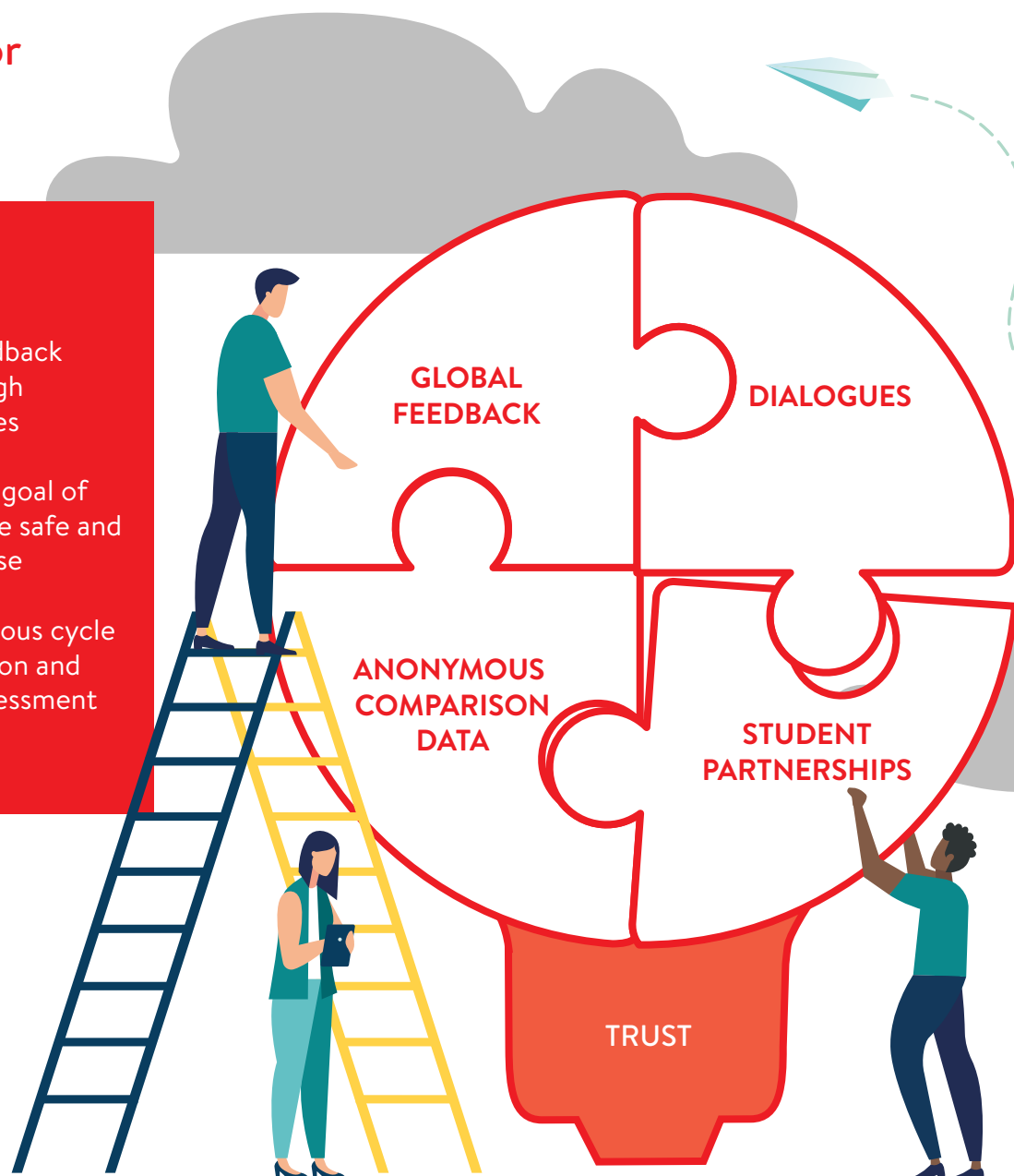


Encourage collective reflection and self-development through the Community of Practice

What are the major components?

Top Tips

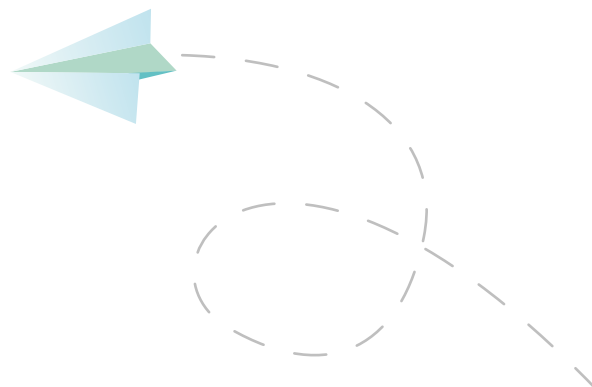
- Initiate assessor feedback conversations through moderation processes
- Focus on the shared goal of ensuring students are safe and competent to practise
- Encourage a continuous cycle of feedback, reflection and enhancement of assessment practice





Global feedback

- Provide assessors with group feedback to encourage collective reflection
- Focus on 'who we are assessing' and 'what we are looking for' in an assessment task



Anonymous comparison data

- Develop an understanding of own assessment behaviour among the assessor cohort
- Encourage self-reflection on own assessment practice



Dialogues

- Move towards shared decision-making and sense-making through professional conversations among assessors
- Consider potential power differentials among assessors



Student partnerships

- Collaborate with students to develop feedback literacy
- Involve students in providing assessors with group feedback



Trust

- Building trust is integral to providing assessors with feedback for professional development purposes
- Consolidate collaborations in the Community of Practice



PRINCIPAL INVESTIGATOR
Dr Amy Wai Yee Wong
School of Nursing and Midwifery
Queen's University Belfast

Email: a.wong@qub.ac.uk

FUNDING ACKNOWLEDGEMENT
The Association for the Study of Medical
Education (ASME) Medical Education
Developing Scholarship Award

CO-INVESTIGATORS
Professor Gerry Gormley & Dr Kathy Cullen
School of Medicine, Dentistry and Biomedical
Sciences, Queen's University Belfast

Professor Christine Brown Wilson & Ms Alison Smart
School of Nursing and Midwifery
Queen's University Belfast

Dr Sharon Haughey & Dr Mary-Carmel Kearney
School of Pharmacy
Queen's University Belfast

Professor Erik Driessen
Faculty of Health, Medicine & Life Sciences
Maastricht University



**ASSESSOR
SUPPORT**