

"The Downfall of Their Daughters": E.J. Bellocq's Storyville Portraits and Representations of
Sex Work in the Fin de Siècle

Volume II

Mollie Sarah LeVeque

A thesis submitted to the School of Art, Media, and American Studies in partial fulfillment of
the requirements for the degree of Doctor of Philosophy, University of East Anglia

March 2017

The copy of this thesis has been supplied on condition that anyone who consults it is
understood to recognize that its copyright rests with the author and that use of any
information derived therefrom must be in accordance with current UK copyright law. In
addition, any quotation or extract must include full attribution.

Table of Contents

| | | |
|-----------|---|----|
| Figure 1 | Plate 16, E.J. Bellocq | 5 |
| Figure 2 | Bellocq's desk or bureau | 6 |
| Figure 3 | "At the French Opera – After the French Opera" | 7 |
| Figure 4 | Plate 5, E.J. Bellocq | 8 |
| Figure 5 | Plate 19, E.J. Bellocq | 9 |
| Figure 6 | Plate 3, E.J. Bellocq | 10 |
| Figure 7 | Anonymous | 11 |
| Figure 8 | Anonymous | 12 |
| Figure 9 | Anonymous | 13 |
| Figure 10 | Anonymous | 14 |
| Figure 11 | Anonymous | 15 |
| Figure 12 | <i>Akt mit Lyra</i> , Frankreich | 16 |
| Figure 13 | Anonymous | 16 |
| Figure 14 | Plate 33, E.J. Bellocq | 17 |
| Figure 15 | Attributed to E.J. Bellocq | 18 |
| Figure 16 | Attributed to E.J. Bellocq | 19 |
| Figure 17 | Dan Leyrer, Mahogany Hall | 20 |
| Figure 18 | Attributed to E. J. Bellocq, Mahogany Hall interior | 21 |
| Figure 19 | Plate 17, E.J. Bellocq | 22 |
| Figure 20 | Advertisement, <i>Blue Book</i> | 23 |
| Figure 21 | Advertisement, <i>Blue Book</i> | 24 |
| Figure 22 | Detail from the <i>Illustrated Police News</i> | 25 |
| Figure 23 | Studio portrait of Annie Chapman | 26 |

| | | |
|-----------|--|----|
| Figure 24 | Annie Chapman's postmortem portrait | 27 |
| Figure 25 | John Sloan, <i>Three A.M.</i> | 28 |
| Figure 26 | George Bellows, "But If You've Never Cooked..." | 29 |
| Figure 27 | Glenn O. Coleman, "Are you Going to See Me Home..." | 30 |
| Figure 28 | Selection of Bertillon cards | 31 |
| Figure 29 | Plate 9, E.J. Bellocq | 32 |
| Figure 30 | Detail from "The Townsend Tragedy" | 33 |
| Figure 31 | Detail from <i>The Mascot</i> | 34 |
| Figure 32 | Franz von Bayros, <i>Der Rivale</i> | 35 |
| Figure 33 | Anonymous | 36 |
| Figure 34 | Anonymous | 37 |
| Figure 35 | Anonymous | 38 |
| Figure 36 | Anonymous | 39 |
| Figure 37 | Plate 13, E.J. Bellocq | 40 |
| Figure 38 | Plate 12, E.J. Bellocq | 41 |
| Figure 39 | Plate 22, E.J. Bellocq | 42 |
| Figure 40 | Plate 2, E.J. Bellocq | 43 |
| Figure 41 | Plate 24, E.J. Bellocq | 44 |
| Figure 42 | Plate 20, E.J. Bellocq | 45 |
| Figure 43 | René Rondeau, <i>Storyville – Tribute to E.J. Bellocq of New Orleans</i> | 46 |
| Figure 44 | René Rondeau, <i>Portrait</i> | 47 |
| Figure 45 | John Sloan, <i>Prone Nude</i> | 48 |
| Figure 46 | John Sloan, <i>Prone Nude (Nude Lying Down)</i> | 49 |
| Figure 47 | John Sloan, <i>Turning Out the Light</i> | 50 |

LeVeque

4

Figure 48 John Sloan, *Bachelor Girl*

51

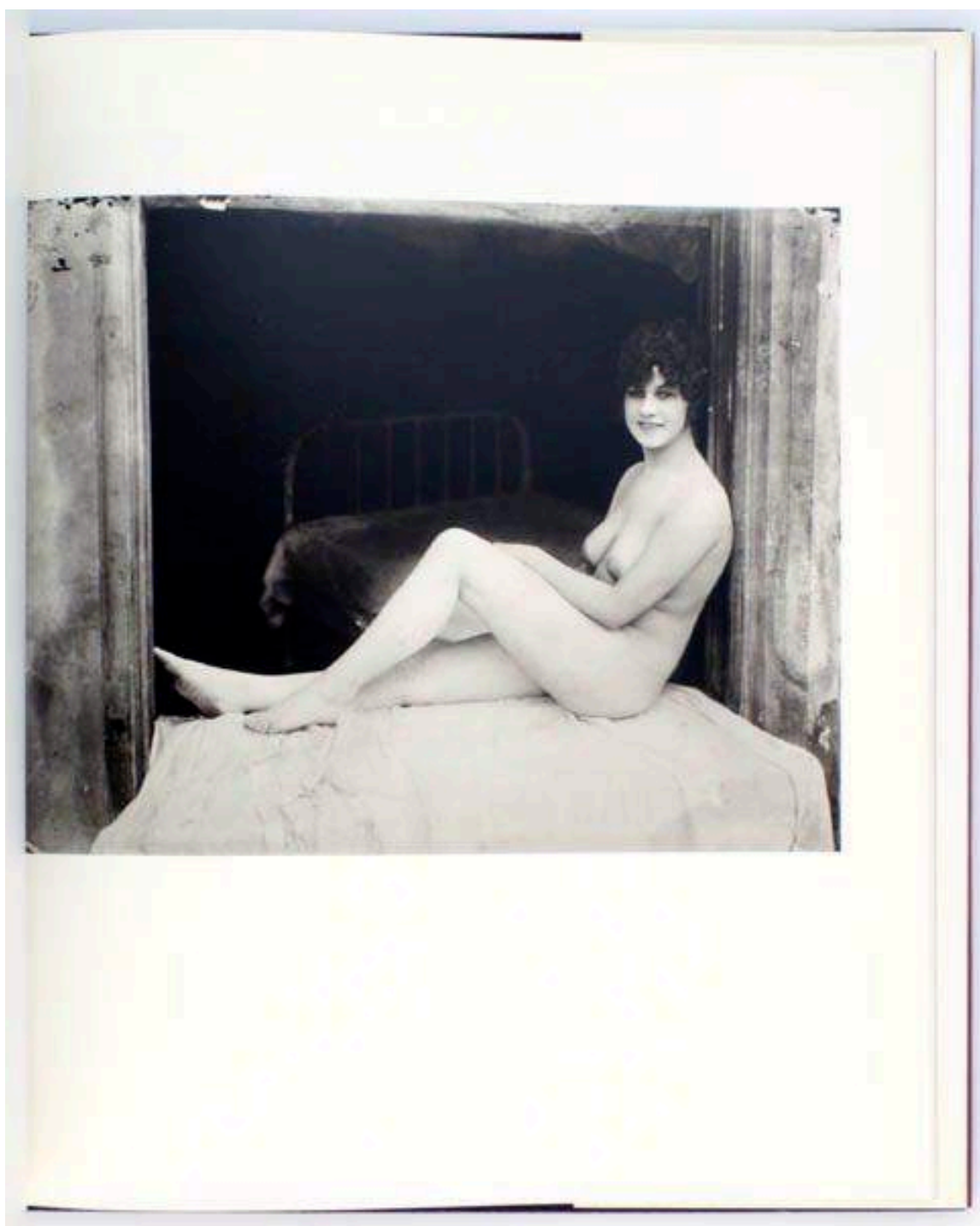


Figure 1 Plate 16, E.J. Bellocq
Storyville Portraits – Photographs from the New Orleans Red-Light District, Circa 1912



Figure 2 Bellocq's desk or bureau
Storyville Portraits



Figure 3 “At the French Opera – After the French Opera”
The Mascot, 28 December 1888



Figure 4 Plate 5, E.J. Bellocq
Storyville Portraits



Figure 5 Plate 19, E.J. Bellocq
Storyville Portraits



Figure 6 Plate 3, E.J. Bellocq
Storyville Portraits



Figure 7 **Anonymous, c. 1860**
(Public domain, anonymous)

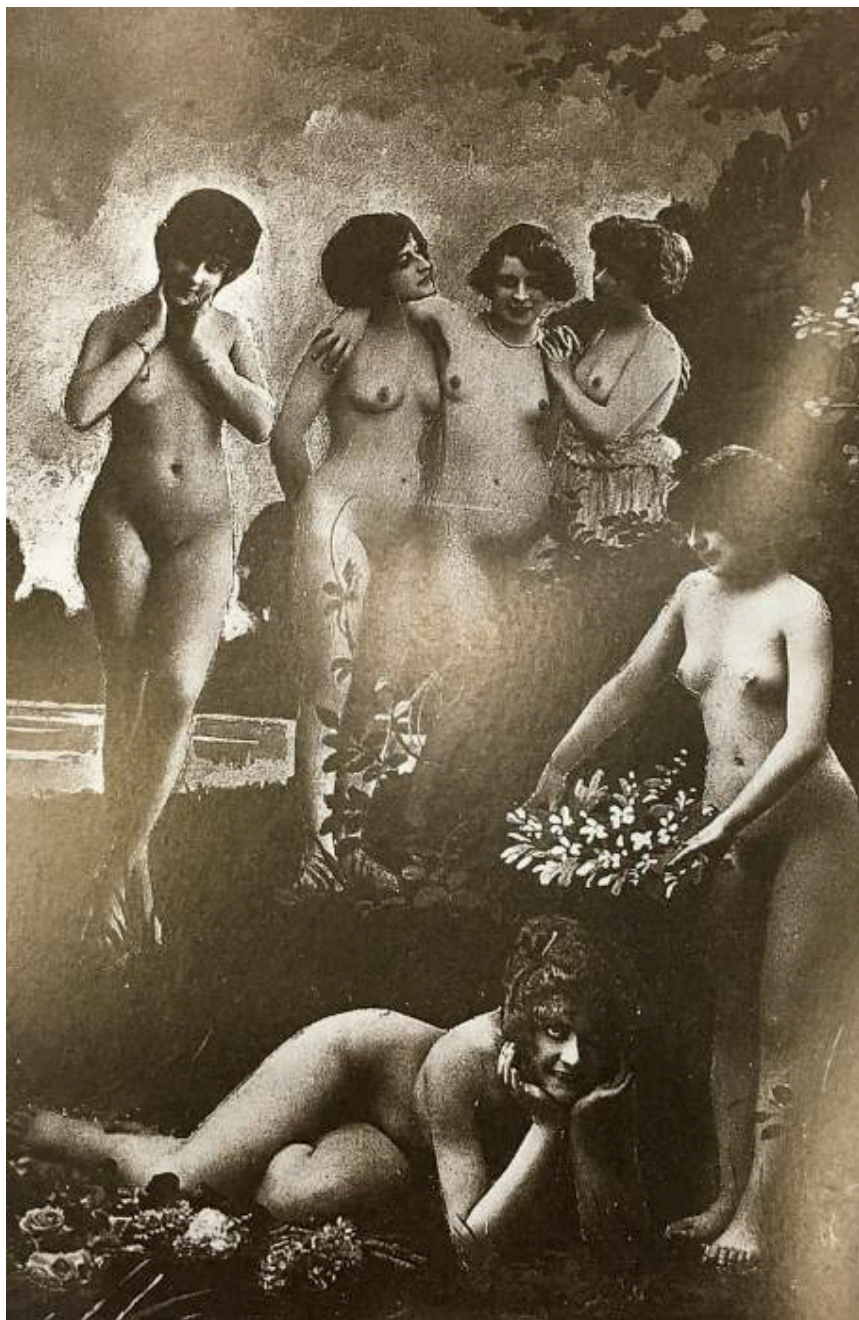


Figure 8 **Anonymous, c. 1900**
1,000 Nudes



Figure 9 **Anonymous, c. 1910**
1,000 Nudes



Figure 10 Anonymous, c. 1910

Wellcome Images



Figure 11 **Anonymous, c. 1910**
1,000 Nudes



Figure 12 *Akt mit Lyra, Frankreich, c. 1850-1855*
Daguerreobase

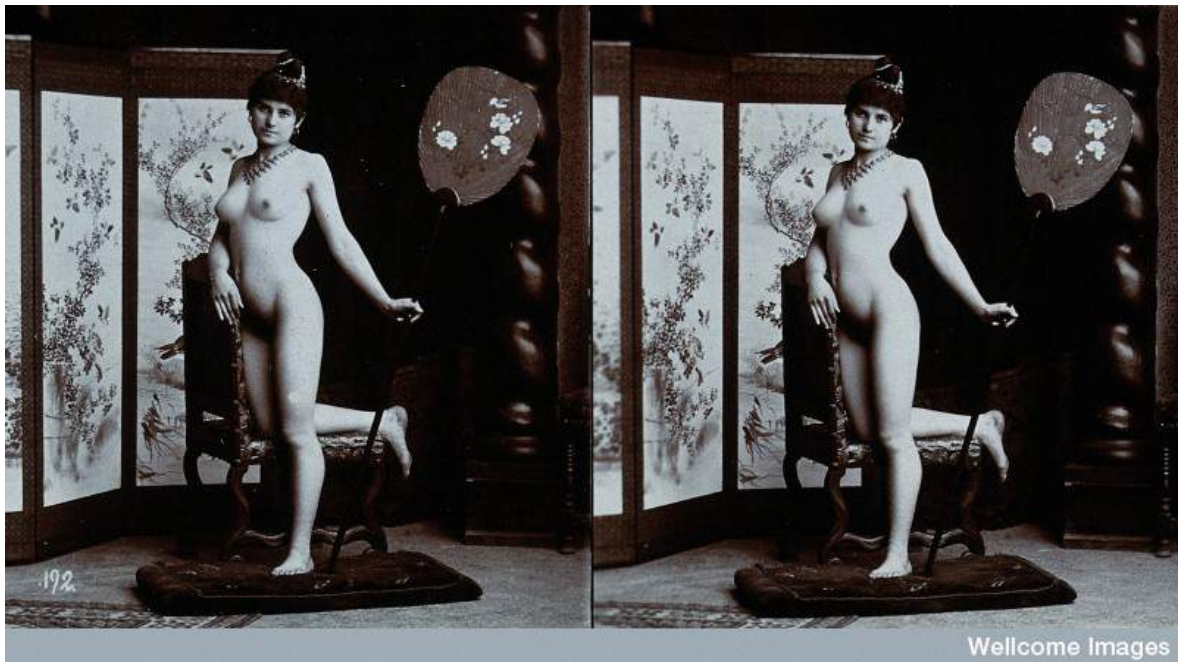


Figure 13 *Anonymous, c. 1910*
Wellcome Images



Figure 14 Plate 33, E.J. Bellocq
Storyville Portraits



Figure 15 Attributed to E.J. Bellocq



Figure 16 Attributed to E.J. Bellocq



Figure 17 Dan Leyrer, Mahogany Hall before its demolition in 1949



Figure 18 Attributed to E. J. Bellocq, Mahogany Hall interior (n.d.)



Figure 19 Plate 17, E.J. Bellocq
Storyville Portraits



Figure 20 Advertisement, *Blue Book*, c. 1909

Miss Trilby O'Fennell,
936
Customhouse St.

To see the tenderloin proper is to visit

TRILBY'S.

Unless' this is done the district has not been thoroughly covered. When it comes to being highly entertained by a refined and clever entertainer, you'll get the best of it from Miss Trilby O'Ferrel who is noted for fun and cleverness the country over.

The women of this establishment are all pretty. Their names are Misses Nina King, Beatrice Cameron, Della Lovett, Ruby Raymond, Florence Delmore, Claud Edmons.

Figure 21 Advertisement, *Blue Book*
c. 1898

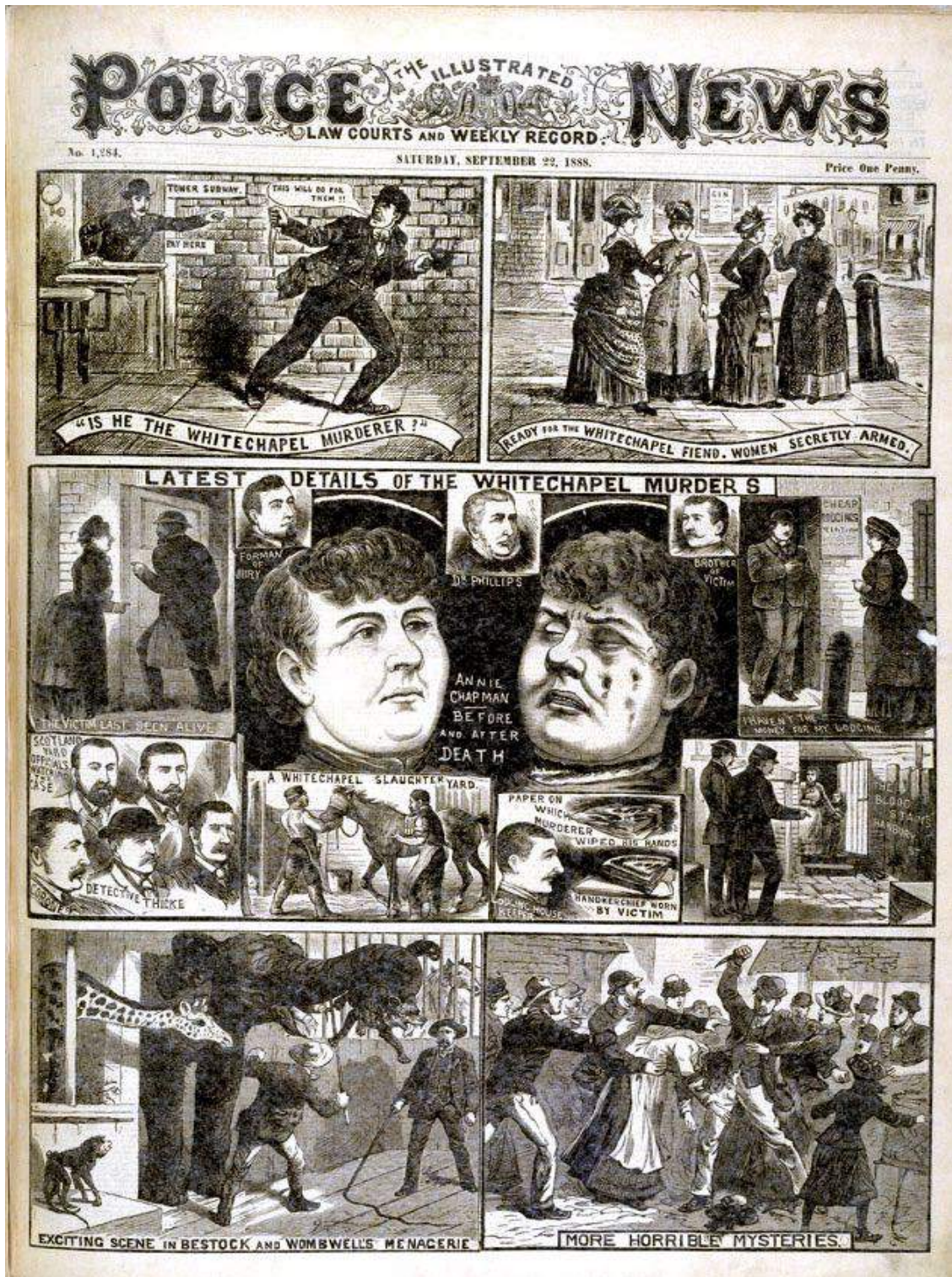


Figure 22 *Illustrated Police News*
September 22, 1888



Figure 23 Studio portrait of Annie Chapman and her husband, John Chapman

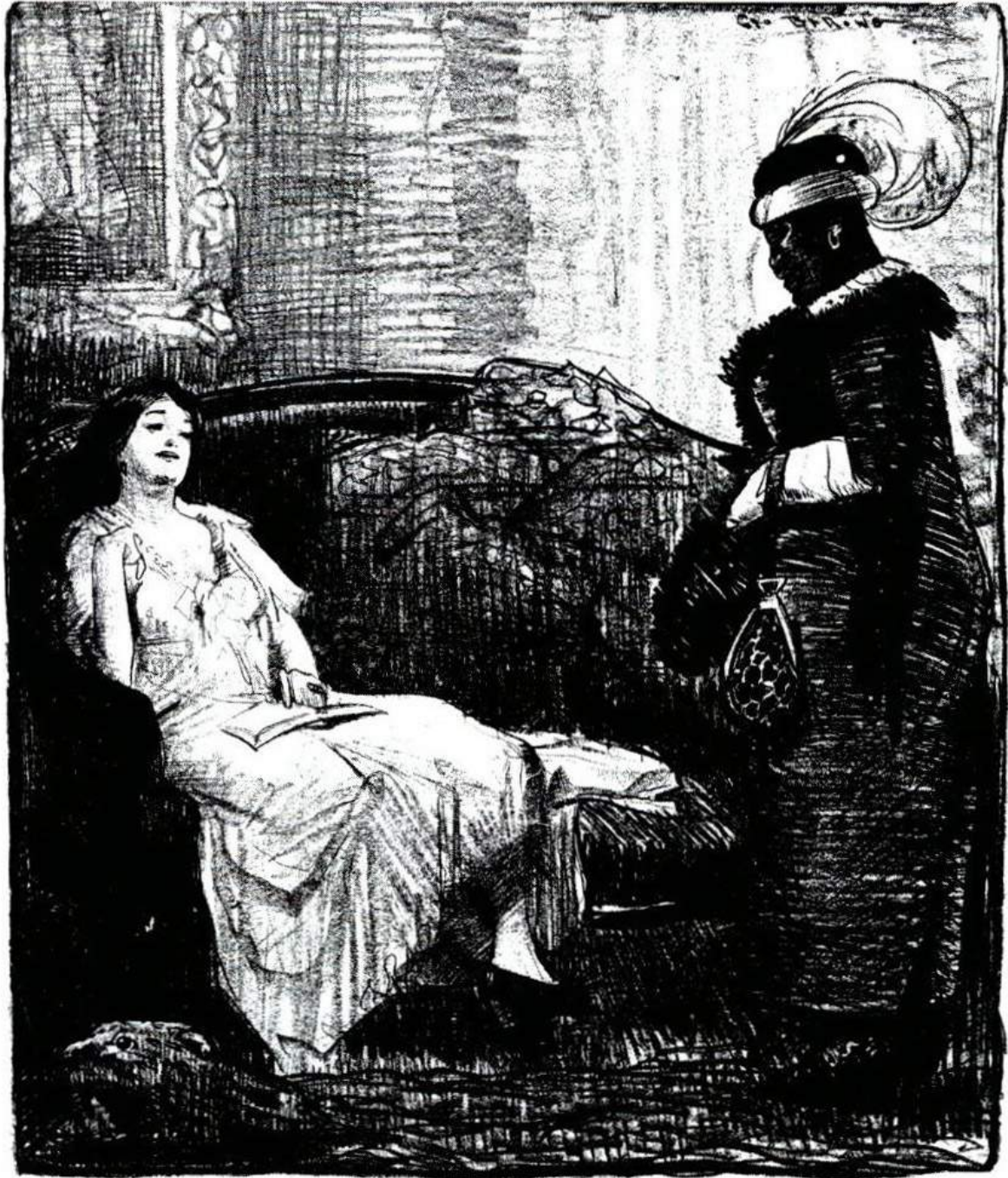
c.1869



Figure 24 Annie Chapman's postmortem portrait
1888



Figure 25 John Sloan, *Three A.M.*, 1910



Drawn by George Bellows.

"BUT IF YOU HAVE NEVER COOKED OR DONE HOUSEWORK—WHAT HAVE YOU DONE?"

"WELL, MAM, AH—AH'S BEEN A SORT OF P'FESSIONAL."

"A PROFESSIONAL WHAT?"

"WELL, MAM—AH TAKES YU' FO' A BROAD-MINDED LADY—AH DON'T MIND TELLIN' YOU AH BEEN ONE OF THEM WHITE SLAVES."

Figure 26 George Bellows, "But If You've Never Cooked or Done Housework..."

The Masses, May 1914



Drawn by Glenn O. Coleman.

"ARE YOU GOING TO SEE ME HOME TO JERSEY TO-NIGHT?"
"YEAH, I WANT TO GET FINCHED UNDER THE WHITE SLAVE LAW!"

Figure 27 Glenn O. Coleman, "Are you Going to See Me Home..."
The Masses, February 1914



Figure 28 Selection of Bertillon cards from the New Orleans Police Department

(Used for the “Hidden From History – Unknown New Orleans” exhibit at the New Orleans Public Library)



Figure 29 Plate 9, E.J. Bellocq
Storyville Portraits

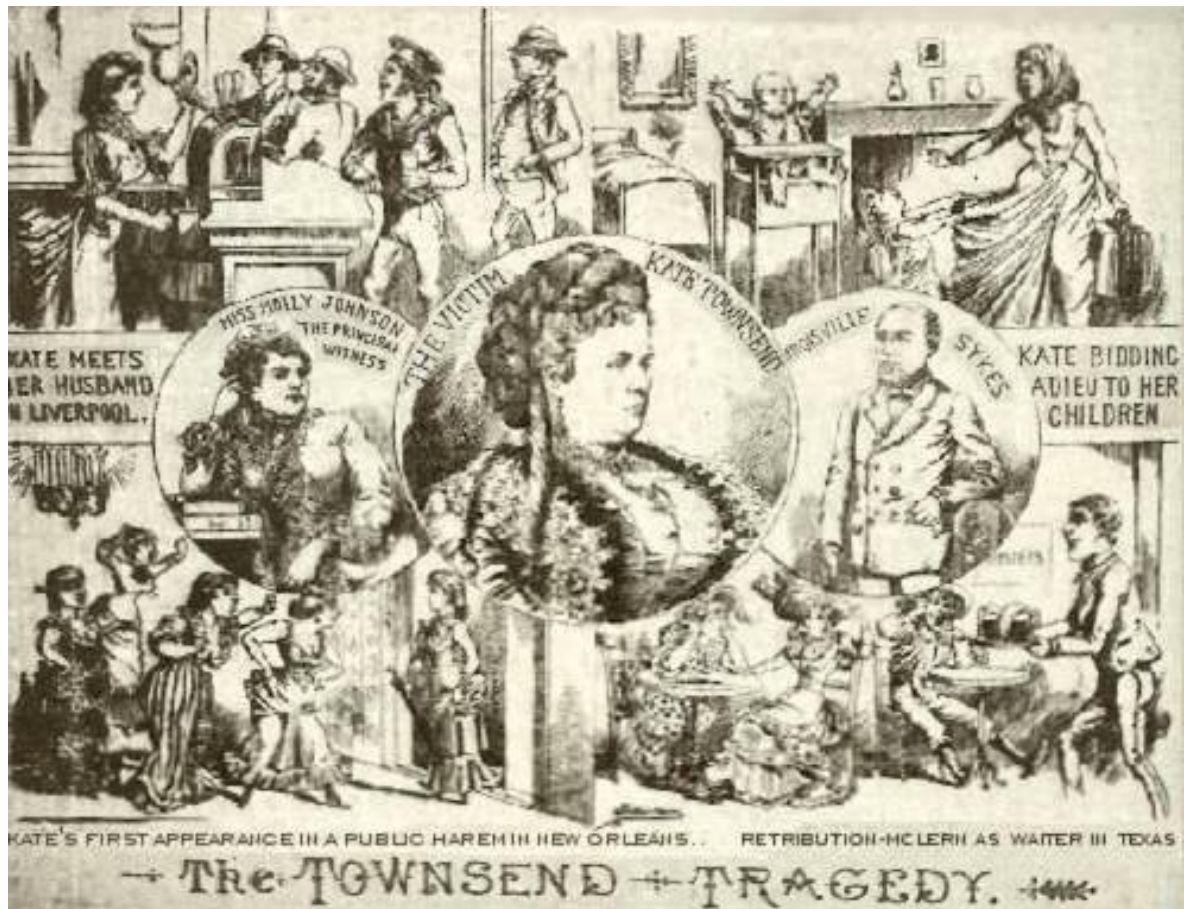


Figure 30 Detail from "The Townsend Tragedy"



Figure 31 Detail from *The Mascot*, May 21, 1892



Figure 32 Franz von Bayros, "Der Rivale," illustration from "Erzählungen am Toilettentische" ("Tales at the Dressing Table") c. 1908



Figure 33 Anonymous, c. 1920
1,000 Nudes

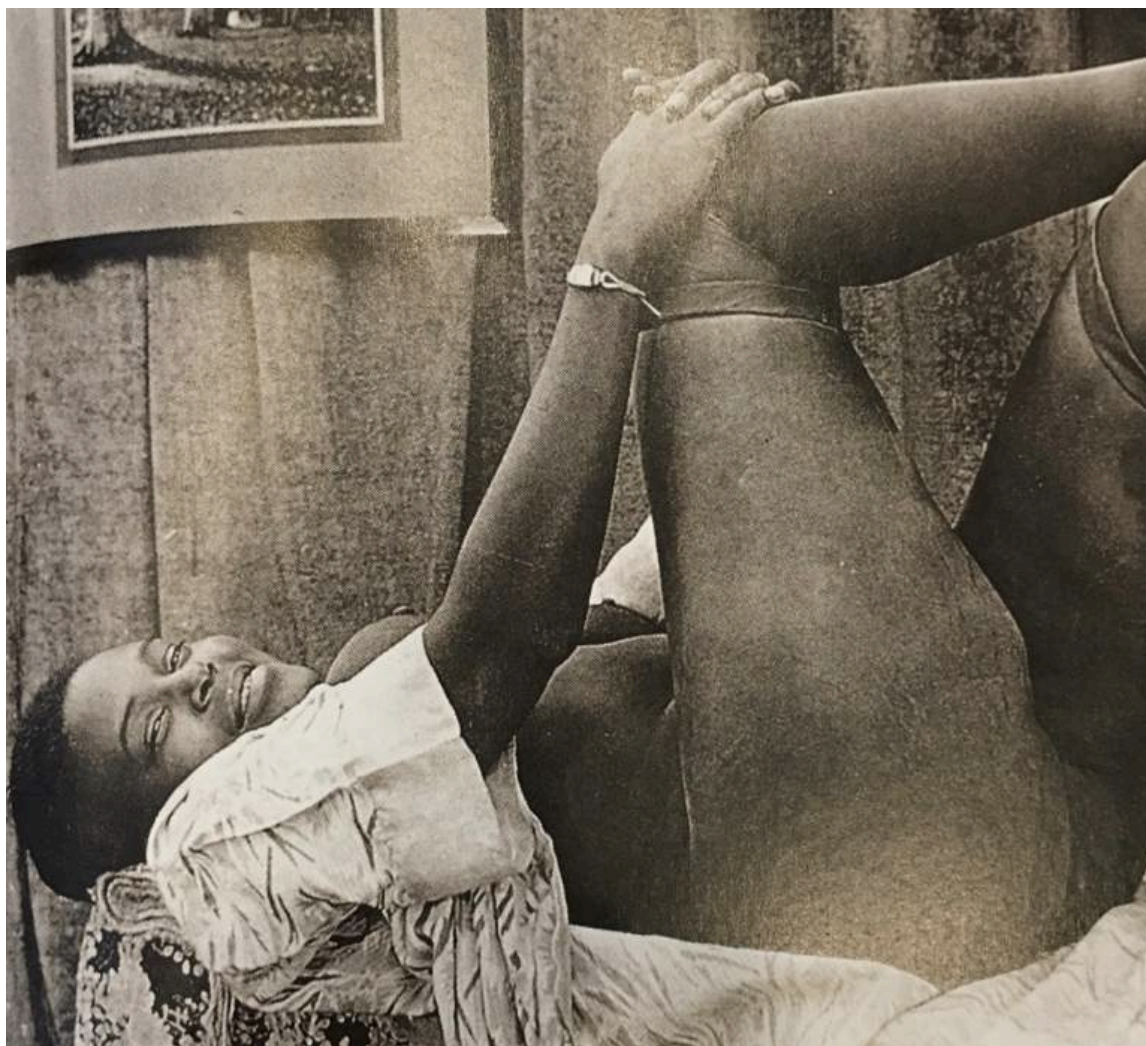


Figure 34 Anonymous, c. 1920
1,000 Nudes

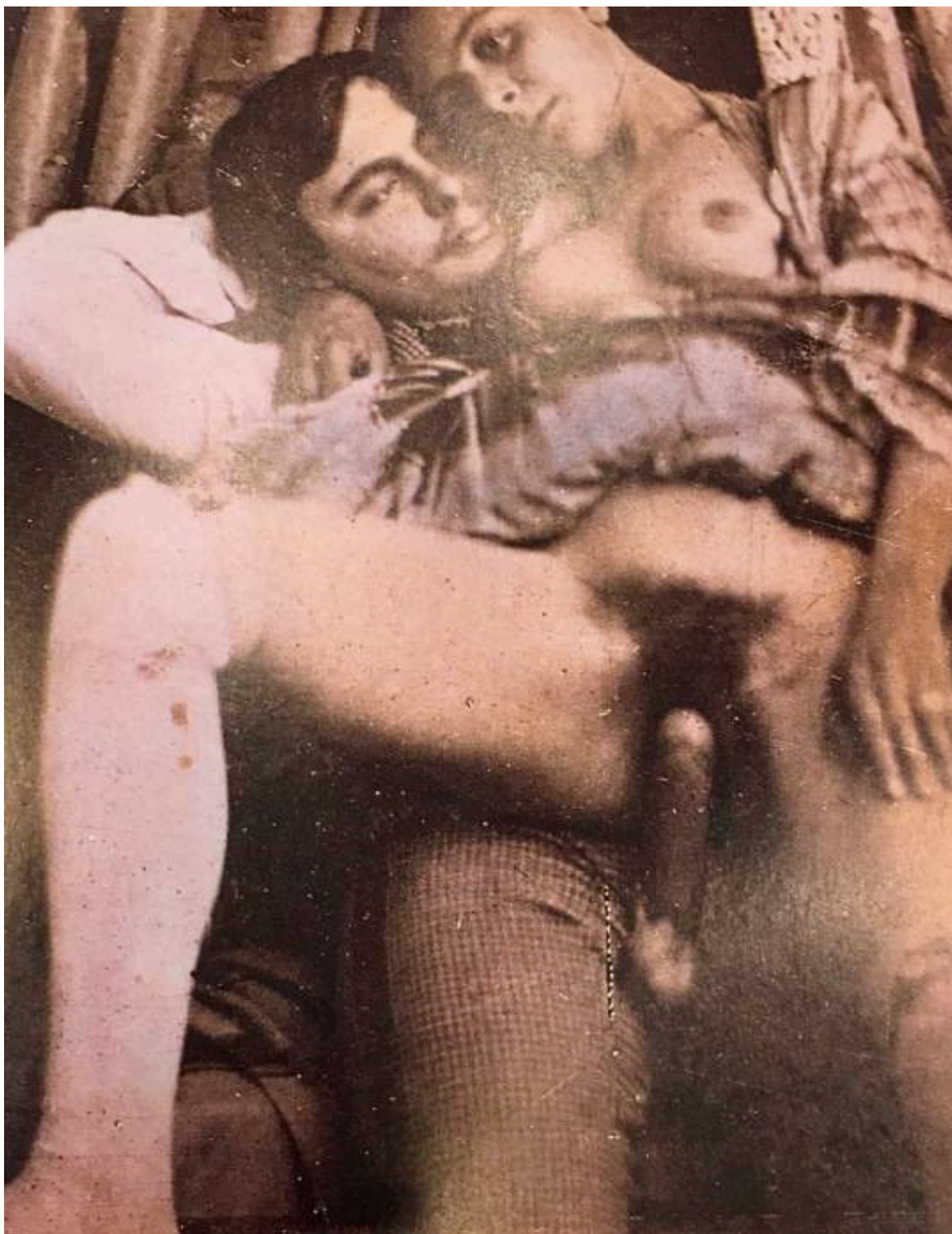


Figure 35 Anonymous, c. 1850
1,000 Nudes



Figure 36 **Anonymous, c. 1890s**
1,000 Nudes



Figure 37 Plate 13, E.J. Bellocq
Storyville Portraits



Figure 38 Plate 12, E.J. Bellocq
Storyville Portraits



Figure 39 Plate 21, E.J. Bellocq
Storyville Portraits



Figure 40 Plate 2, E.J. Bellocq
Storyville Portraits



Figure 41 Plate 24, E.J. Bellocq
Storyville Portraits



Figure 42 Plate 20, E.J. Bellocq
Storyville Portraits



Figure 43 René Rondeau, *Storyville – Tribute to E.J. Bellocq of New Orleans*
n.d.



Figure 44 René Rondeau, *Portrait*
n.d.



Figure 45 John Sloan, *Prone Nude*
1913



Figure 46 John Sloan, *Prone Nude (Nude Lying Down)*
1913



Figure 47 John Sloan, *Turning Out the Light*
1905



Figure 48 John Sloan, *Bachelor Girl*
1915