

Survival in the British Art World

The Art and Career of John Sell Cotman 1800-1840

Sarah Elizabeth Moulden

Submitted for the degree of Doctor of Philosophy in the History of Art

University of East Anglia

School of Art, Media and American Studies

Registration number: 6485065

April 2016

Volume 2

I certify that the work contained in the thesis submitted by me for the degree of Doctor of Philosophy is my original work except where due reference is made to other authors, and has not been previously submitted by me for a degree at this or any other university.

Access Condition and Agreement

Each deposit in UEA Digital Repository is protected by copyright and other intellectual property rights, and duplication or sale of all or part of any of the Data Collections is not permitted, except that material may be duplicated by you for your research use or for educational purposes in electronic or print form. You must obtain permission from the copyright holder, usually the author, for any other use. Exceptions only apply where a deposit may be explicitly provided under a stated licence, such as a Creative Commons licence or Open Government licence.

Electronic or print copies may not be offered, whether for sale or otherwise to anyone, unless explicitly stated under a Creative Commons or Open Government license. Unauthorised reproduction, editing or reformatting for resale purposes is explicitly prohibited (except where approved by the copyright holder themselves) and UEA reserves the right to take immediate 'take down' action on behalf of the copyright and/or rights holder if this Access condition of the UEA Digital Repository is breached. Any material in this database has been supplied on the understanding that it is copyright material and that no quotation from the material may be published without proper acknowledgement.

List of Images

Introduction

- Figure 1. John Sell Cotman, *Horse Loaded with Artists' Paraphernalia*, c.1834, pencil on paper, 23.9 x 30.4 cm, Fitzwilliam Museum, Cambridge
- Figure 2. *Statue of King Charles I, Charing Cross*, 1832, pencil, watercolour, bodycolour and brown ink, 43.3 x 31.4, Norwich Castle Museum and Art Gallery, Norwich

Chapter 1

- Figure 3. *The Kitchen in the Artist's Father's House*, 1801, graphite and watercolour on wove paper, 25.7 x 20.3 cm, Private Collection, UK
- Figure 4. Annotated Map of Norwich, T. Smith after John Ninham, *Plan of the City of Norwich*, engraving, published by T. Peck, Norwich, 10 February 1802, Norwich Castle Museum & Art Gallery, Norwich
- Figure 5. Annotated Map of Norwich Parishes, from Index to Norwich Marriages 1813-17, compiled by John F. Fone. Norfolk & Norwich Genealogical Society, vol. 14 (1982), Norfolk Records Office, Norwich
- Figure 6. *House at St Stephen's Road, Norwich*, c.1794, pen and grey ink with grey, blue and red wash on paper, 13.2 x 17.5 cm, British Museum, London
- Figure 7. Augustus Pugin and Thomas Rowlandson, *Tradecard of Rudolph Ackermann's Repository of Arts at 101 Strand, London* later published in *Repository of the Arts*, vol. 1, part 1, published London, 1809, hand-coloured etching with aquatint, 13.9 x 24.6 cm, British Museum, London
- Figure 8. Thomas Rowlandson, 'Entrance of Tottenham Court Road Turnpike, with a view of St James's Chapel', plate three of *Views of London*, published by Rudolph Ackermann, London, 1798, hand-coloured 27 x 22cm, Museum of London, London
- Figure 9. Detail of Rowlandson, 'Entrance of Tottenham Court Road Turnpike, with a view of St James's Chapel'
- Figure 10. John Henderson, *Dover Harbour*, c.1790-5, pencil on paper, 27.4 x 43.1 cm, British Museum, London
- Figure 11. J. M. W. Turner and Thomas Girtin, *Dover Harbour: Small Boats by the Quay*, 1795-6, pencil and watercolour on paper, 34 x 42.8 cm, Tate, London

- Figure 12. *Dover Harbour*, 1799, pencil on paper, 14.9 x 14.8 cm, Leeds Art Gallery, Leeds
- Figure 13. *Dover Harbour*, 1799, pencil on paper, 12.8 x 13.3 cm, Leeds Art Gallery, Leeds
- Figure 14. *Dover Harbour*, 1799, pencil on paper, 11.2 x 18.9 cm, Leeds Art Gallery, Leeds
- Figure 15. *Dover Harbour*, 1799, pencil on paper, 14.9 x 16.2 cm, Leeds Art Gallery, Leeds
- Figure 16. *Dover Harbour*, 1799, pencil on paper, 11.8 x 18.5cm, Leeds Art Gallery, Leeds
- Figure 17. *The Well House, Ashtead Park, Surrey*, pencil on paper, 15.9 x 19.8 cm, Leeds Art Gallery, Leeds
- Figure 18. *The Well House, Ashtead Park, Surrey*, pencil paper, 15.9 x 19.2 cm, Leeds Art Gallery, Leeds
- Figure 19. Thomas Monro, *The Well House, Ashtead Park, Surrey*, c.1795, black ink, wash and white bodycolour on paper, 11.3 x 17.8 cm, Fogg Museum, Harvard
- Figure 20. Thomas Girtin, *The Well House, Ashtead Park, Surrey*, c.1795, pencil and watercolour on paper, 49.9 x 86.5 cm, whereabouts unknown
- Figure 21. *A Cottage in Guildford Churchyard, Surrey*, inscribed in pencil on verso 'Cotman 14 March 1800', pencil and watercolour on paper, 35.6 x 53.2 cm, Nottingham Castle Museum & Art Gallery, Norwich
- Figure 22. *A Water Mill near Dorking, Surrey*, Exh. Society of Artists 1800, watercolour over pencil on paper, 48.6 x 36 cm, Fitzwilliam Museum, Cambridge
- Figure 23. *High on a Rock*, 1802, pencil and wash on paper, 22.2 x 32.4 cm, Victoria & Albert Museum, London
- Figure 24. Thomas Girtin, *An Ancient Castle*, 1799, pencil and wash on paper, 20.4 x 30.3 cm, Tate, London
- Figure 25. Joseph Powell, *Landscape with Castle*, 1803/4, pencil and sepia wash on paper, 30.6 x 44.3 cm, Victoria & Albert Museum, London
- Figure 26. Joshua Cristall, *Landscape with Castle*, 1803/4, pencil and sepia wash on paper, 30 x 44 cm, Victoria & Albert Museum, London
- Figure 27. Paul Sandby Munn, *Landscape with Castle*, 1803/4, pencil and wash on paper, 30 x 42.1 cm, Victoria & Albert Museum, London
- Figure 28. *Landscape with Castle*, 1803/4, pencil and sepia wash on paper, 36.2 x 49.4 cm, Victoria & Albert Museum, London
- Figure 29. *Eve*, 1803/4, pencil and sepia wash on paper, 31 x 44.4 cm Victoria & Albert Museum, London

- Figure 30. Detail of *Eve*
- Figure 31. John Varley, *Pale Melancholy*, 1803/4, pencil and wash on paper, 48.1 x 37 cm, Victoria & Albert Museum, London
- Figure 32. Detail of Varley, *Pale Melancholy*
- Figure 33. Joshua Cristall, *Dante and Virgil on the Bridge*, 1803-4, pencil and wash on paper, 34 x 22 cm, Victoria & Albert Museum, London
- Figure 34. *Mountainous Landscape with a Blasted Tree*, c.1803, pencil and wash on paper, 29.6 x 44.7 cm, Tate, London
- Figure 35. *Wooded Scene*, 1803-4, pencil and wash on paper, 33 x 48.8 cm, Victoria & Albert Museum, London
- Figure 36. *Ode to Spring*, 1803-4, pencil and wash on paper, 34 x 49.2 cm, Victoria & Albert Museum, London
- Figure 37. *Behold Yon Oak*, 1804, pencil and wash on paper, 31.2 cm x 44.7 cm, Norwich Castle Museum & Art Gallery, Norwich
- Figure 38. *Gnarled Oak*, 1804, pencil and watercolour on paper, 31.2 x 25.5cm, Norwich Castle Museum & Art Gallery, Norwich
- Figure 39. Joseph Powell, *Landscape Scene*, 1803/4, pencil and sepia wash on paper, 25.4 x 38.5 cm, Victoria & Albert Museum, London
- Figure 40. Detail of Powell, *Landscape Scene*
- Figure 41. William Havell, *Wooded Scene*, 1803/4, pencil and sepia wash on paper, 32.1 x 59 cm, Victoria & Albert Museum, London

Chapter 2

- Figure 42. *Distant View of Newburgh Priory*, 1803-4, Exh. RA 1804, pencil and watercolour on paper, 38.9 x 79.4 cm, Newburgh Priory, Yorkshire
- Figure 43. *View of Newburgh Priory*, 1803-4, Exh. RA 1804, pencil and watercolour on paper, 38.9 x 79.4 cm, Newburgh Priory, Yorkshire
- Figure 44. Thomas Girtin, *Kirkstall Abbey, Yorkshire*, 1800, watercolour on paper, 32 x 52 cm, British Museum, London
- Figure 45. Paul Sandby Munn, *Kirkstall Abbey*, 1803, pen and grey ink over pencil on paper, 197 x 29.2 cm, British Museum, London
- Figure 46. J. M. W. Turner, *Harewood House from the North East*, 1797, watercolour on paper, 50.5cm x 64.5 cm, Harewood House, Yorkshire
- Figure 47. *Cottage at Bolton*, 1803, pencil and wash on paper, 17.1 x 22.3 cm, Norwich Castle Museum & Art Gallery, Norwich

- Figure 48. Paul Sandby Munn, *Cottage at Bolton*, 1803, pencil on paper, 11.1 x 18.7 cm, Victoria & Albert Museum, London
- Figure 49. Thomas Hearne, *Cottage*, c.1795, pencil on paper, 32.4 x 23.8 cm, Yale Center for British Art, New Haven
- Figure 50. John Varley, *Cottage at Bolton*, pencil on paper, c.1803, 19.5 x 33 cm, Tate, London
- Figure 51. *Riveaulx Abbey*, 1803, pencil on paper, 37.1 x 27 cm, Tate, London
- Figure 52. *West Front of Byland Abbey*, dated 7 September 1803, pencil and watercolour on paper, 31.8 x 24.8cm, Amgueddfeydd ac Oriolau Cenedlaethol Cymru, National Museums & Galleries of Wales, Cardiff
- Figure 53. *Teresa Ann Cholmeley*, dated 10 September 1803, pencil on paper, 25.4 x 19.5 cm, York City Art Gallery, York
- Figure 54. *Francis Cholmeley*, 1803, pencil on paper, 25.4 x 19.5 cm, York City Art Gallery, York
- Figure 55. *Francis Cholmeley the Younger*, 1803, pencil on paper, 25.4 x 19.5 cm, York City Art Gallery, York
- Figure 56. *Anne Cholmeley*, 1803, pencil on paper, 25.4 x 19.5 cm, York City Art Gallery, York
- Figure 57. *Mary Catherine Cholmeley*, 1803, pencil on paper, 25.4 x 19.5 cm, York City Art Gallery, York
- Figure 58. *Katherine Henrietta Cholmeley*, 1803, pencil on paper, 25.4 x 19.5 cm, York City Art Gallery, York
- Figure 59. *Harriet Cholmeley*, 1803, pencil on paper, 25.4 x 19.5 cm, York City Art Gallery, York
- Figure 60. George Dance, *Henry Fuseli*, dated 2 June 1793, pencil and pink chalk on paper, 25.2 x 19 cm, Royal Academy, London
- Figure 61. John Downman, *Frances Downman*, 1796, charcoal and stump touched with red and black chalk on paper, 22.3 x 17.3 cm, British Museum, London
- Figure 62. *The Gates to Brandsby Courtyard*, 1803, pencil on paper, 25.5 x 17.8 cm, Private Collection, UK
- Figure 63. Annotated Googlemap of Rokeby Park and immediate vicinity
- Figure 64. *Distant View of Greta Bridge*, 1805, pencil and watercolour on paper, 26 x 39.4 cm, Tate, London
- Figure 65. John Varley, *View of Bodenham and the Malvern Hills, Herefordshire*, 1801, watercolour and pencil on paper, 31.1 x 52.1 cm, Tate, London

- Figure 66. John Varley, *Harewood House from the South East*, 1803, pencil and watercolour on paper, 55.5cm x 87 cm, Harewood House, Yorkshire
- Figure 67. *Barnard Castle from Towler Hill*, Exh. RA 1806, watercolour and pencil on paper, 33 x 43.2 cm, Leeds City Art Gallery, Leeds
- Figure 68. *Brignall Banks on the Greta*, 1805, pencil and watercolour on paper, 18.8 x 28.3 cm, Leeds City Art Gallery, Leeds
- Figure 69. *Bank of the Greta*, 1805-6, watercolour and pencil on paper, 22.5 x 32.9 cm, British Museum, London
- Figure 70. *In Rokeby Park*, 1805, pencil and watercolour on paper, 327 x 22.9 cm, Yale Center for British Art, New Haven
- Figure 71. *On the Greta*, 1805, pencil and watercolour on paper, 30.6 x 22.6 cm, Norwich Castle Museum & Art Gallery, Norwich
- Figure 72. *On the Greta*, 1805, pencil and watercolour on paper, 22.8 x 33.3 cm, Tate, London
- Figure 73. *On the Greta*, 1805, watercolour and pencil on paper, 45.1 x 35.1 cm, Norwich Castle Museum & Art Gallery, Norwich
- Figure 74. *On the River Greta*, 1805-6, watercolour and pencil on paper, 32.6 x 22.9 cm, Norwich Castle Museum & Art Gallery, Norwich
- Figure 75. Anne Cholmeley, *Rectory Barn, Brandsby*, pencil on paper, 19 x 23.5 cm, Private Collection, UK
- Figure 76. Anne or Katherine Cholmeley, *Crayke Castle*, 1803, pencil on paper, 19.3 x 29 cm, Private Collection, UK
- Figure 77. Katherine Cholmeley, *Timbered House, Wales*, dated 19 June 1804, pencil on paper, 17.6 x 14.3 cm, Private Collection, UK
- Figure 78. *Urn on a Pedestal, at Castle Howard*, 1805, pencil on paper, British Museum, London
- Figure 79. *Urn on a Pedestal, at Castle Howard*, 1806, monochrome wash on paper, 20.6 x 16.1 cm, Victoria & Albert Museum, London
- Figure 80. *Durham Cathedral*, Exh. RA 1806, pencil and watercolour on paper, 43.6 x 33 cm, British Museum, London
- Figure 81. *Durham Cathedral – split*, Exh. RA 1806, pencil and watercolour on paper, 43.6 x 33 cm, British Museum, London
- Figure 82. Thomas Girtin, *Durham Cathedral*, c.1796, watercolour on paper, 47.1 x 41.5 cm, British Museum, London
- Figure 83. William Daniell, *Durham Cathedral*, 1805, 40 x 64 cm, watercolour and pencil on paper, Victoria & Albert Museum, London

Chapter 3

- Figure 84. *Fountains Abbey*, Exh. RA 1804, watercolour and pencil on paper, 85.9 x 60.6 cm, Fitzwilliam Museum, Cambridge
- Figure 85. J. M. W. Turner, *Transept of Tintern Abbey, Momouthshire*, Exh. RA 1795, watercolour, pencil and pen and ink on paper, 35.5 x 26 cm, Ashmolean Museum, Oxford
- Figure 86. Thomas Girtin, *Interior of Lindisfarne Priory, Northumberland*, c.1797, watercolour on paper, 53.1 x 39.5 cm, British Museum, London
- Figure 87. *Bolton Abbey from the south*, c.1803, pencil and watercolour on paper, 20.7 x 32.8 cm, Birmingham Museums & Art Gallery, Birmingham
- Figure 88. *Castle Acre Priory*, c.1804, pencil on paper, 38.1 x 25 cm, British Museum, London
- Figure 89. *Fountains Abbey*, c.1804, pencil on paper, 36.2 x 26.7 cm, Norwich Castle Museum & Art Gallery, Norwich
- Figure 90. *Yarmouth Beach with Figures*, Exh. NSA? 1808, oil on canvas, 62.2 x 74.9 cm, Private Collection, UK
- Figure 91. *Boy at Marbles*, Exh. NSA 1808, oil on canvas, 76.2 x 63.5 cm, Norwich Castle Museum & Art Gallery, Norwich
- Figure 92. *Beggar Boy*, Exh. NSA 1808, oil on millboard, 72.7 x 61.5 cm, Norwich Castle Museum & Art Gallery, Norwich
- Figure 93. *Portrait of a boy as Yung Norval* or ‘*Portrait – For, I heard of battles, and I long’d to follow / to the field some warlike Lord.– DOUGLAS*’, Exh. NSA 1808, oil on canvas laid down on board, 56.5 x 46 cm, Private Collection, UK
- Figure 94. John Opie, *Master William Henry West Betty as Young Norval*, Exh. RA 1804, oil on canvas, 198.5 x 149.5 cm, National Portrait Gallery, London
- Figure 95. John Opie, *John Vivian of Pencalenick*, oil on canvas, 75 x 62 cm, Royal Institution of Cornwall, Cornwall
- Figure 96. John Opie, *The Blind Beggar of Bethnal Green and his Daughter*, oil on canvas, 90 x 70 cm, Ashmolean Museum, Oxford
- Figure 97. *Ferry House, Bristol*, Exh. NSA? 1808, oil on canvas, 36.20 x 31.10 cm, National Galleries Scotland, Edinburgh
- Figure 98. *Ferry House, Bristol*, Exh. NSA? 1808, watercolour and pencil on paper, 30.4 x 24.5 cm, Norwich Castle Museum & Art Gallery, Norwich
- Figure 99. *Fish Swills*, Exh. NSA 1809, watercolour and pencil on paper, 18.3 x 26.5 cm, Norwich Castle Museum & Art Gallery, Norwich
- Figure 100. ‘Rules to be Observed in Drawing’, c.1817, pen on paper, Private Collection, UK

- Figure 101. Robert Dixon, *Ferry House, Lower Close, Norwich*, c.1807, pencil and grey wash on paper, 14 x 23.7 cm, British Museum, London
- Figure 102. Robert Dixon, *City Wall, Junction of Barrack Street and Silver Road, Norwich*, Exh. NSA 1809, watercolour and pencil on paper, 57.5 x 79.8 cm, Norwich Castle Museum & Art Gallery, Norwich
- Figure 103. Rudolph Ackermann, Plate three, etching with hand-coloured grey wash, from *Lessons for Beginners in the Fine Arts* (London, 1796), Yale Center for British Art, New Haven
- Figure 104. ‘Croyland Abbey’, plate twenty-two from *Miscellaneous Etchings*, 1811, etching, plate size: 37.8 x 27 cm, paper size: 49.6 x 32.8 cm, Norwich Castle Museum & Art Gallery, Norwich
- Figure 105. *Croyland Abbey*, Exh. RA 1805 and NSA 1807, watercolour and pencil on paper, 42 x 35.5 cm, Norwich Castle Museum & Art Gallery, Norwich
- Figure 106. ‘St. Boltoph’s Priory’, plate twenty-four from *Miscellaneous Etchings*, 1811, etching, plate size: 25.5 x 36.5 cm, paper size: 32 x 49.7 cm, Norwich Castle Museum & Art Gallery, Norwich
- Figure 107. *St. Boltoph's Priory*, 1804, Exh. NSA 1807, 35.7 x 52.1 cm, watercolour and pencil on paper, Norwich Castle Museum & Art Gallery, Norwich
- Figure 108. ‘Byland Abbey’, plate thirteen from *Miscellaneous Etchings*, etching, 1811, plate size: 30.3 x 21.2 cm, paper size: 49.6 x 32.8 cm, Norwich Castle Museum & Art Gallery, Norwich
- Figure 109. *Byland Abbey*, 1804, Exh. 1808, watercolour and pencil on paper, 34.8 x 27 cm, Norwich Castle Museum & Art Gallery, Norwich
- Figure 110. *Byland Abbey*, 1809, watercolour and pencil on paper, 52.1 x 43.5 cm, Norwich Castle Museum & Art Gallery, Norwich
- Figure 111. ‘A Garden House on the banks of the river Yare’, plate fifteen from *Miscellaneous Etchings*, etching, 1811, plate size: 30 x 22 cm, paper size: 49.7 x 33 cm, Norwich Castle Museum & Art Gallery, Norwich
- Figure 112. Detail of ‘A Garden House on the banks of the river Yare’
- Figure 113. ‘North Creake Abbey’, plate seven of *Micellaneous Etchings*, 1811, etching, plate size: 30 x 22.4 cm, paper size: 49.5 x 32.9 cm, Norwich Castle Museum & Art Gallery, Norwich
- Figure 114. One of the Turner daughters, *North Creake Abbey*, 1811, pencil on paper, 28.5 x 22.9 cm, Ashmolean Museum, Oxford
- Figure 115. ‘Duncombe Park, Yorkshire’, plate three from *Miscellaneous Etchings*, 1810, etching, plate size: 21.1 x 14.2 cm, paper size: 49.7 x 32.8, Norwich Castle Museum & Art Gallery, Norwich
- Figure 116. *Duncombe Park, Yorkshire*, 1810, pencil on paper, 22.2 x 14.6 cm, Norwich Castle Museum & Art Gallery, Norwich

- Figure 117. *Byland Abbey*, 1810, pencil on paper, 32.6 x 22 cm, Courtauld Institute of Art, London
- Figure 118. *Garden House on the Yare, Norwich*, c.1811, pencil on paper, 23.9 x 18.5 cm, Norwich Castle Museum & Art Gallery, Norwich
- Figure 119. *A Garden House on the banks of the river Yare*, c.1811, watercolour and pencil on paper, 30.2 x 22.5 cm, Private Collection, UK
- Figure 120. Attributed to James Stark, *A Garden House on the banks of the river Yare*, c.1811, watercolour and pencil on paper, 29.9 x 22.7 cm, Norwich Castle Museum & Art Gallery, Norwich
- Figure 121. ‘The East End of Howden Church’, plate twenty-three from *Miscellaneous Etchings*, 1811, etching plate size: 38 x 27.4 cm, paper size: 49.6 x 32 cm, Norwich Castle Museum & Art Gallery, Norwich
- Figure 122. ‘A Doorway at Valle Crucis Abbey, North Wales’, plate four from *Miscellaneous Etchings*, 1810, etching, plate size: 21.4 x 14.2 cm, paper size: 49 x 33 cm, Norwich Castle Museum & Art Gallery, Norwich
- Figure 123. ‘A Doorway Leading to the Refectory of Rievaulx Abbey’, plate ten from *Miscellaneous Etchings*, 1810, etching, plate size: 30.1 x 22 cm, paper size: 49.5 x 32.1 cm, Norwich Castle Museum & Art Gallery, Norwich
- Figure 124. ‘Dedication’, plate two from *Miscellaneous Etchings*, dated 1 July 1811, 30.2 x 22 cm, etching paper size: 49.8 x 32 cm, Norwich Castle Museum & Art Gallery, Norwich

Chapter 4

- Figure 125. ‘West End of East Barsham House’, plate twenty-nine of *Architectural Antiquities of Norfolk*, 1813, etching, plate size: 22.5 x 30 cm, paper size: 48.2 x 34.5 cm, Norwich Castle Museum & Art Gallery, Norwich
- Figure 126. ‘South Front of East Barsham House’, plate sixty of *Architectural Antiquities of Norfolk*, 1 vol. (1818), 1817, etching, plate size: 29 x 22.5 cm, paper size: 48.2 x 34.5 cm, Norwich Castle Museum & Art Gallery, Norwich
- Figure 127. ‘Yarmouth Priory’, plate four of *Architectural Antiquities of Norfolk*, 1 vol. (1818), 1812, etching, plate size: 22.5 x 30 cm, paper size: 34.5 x 48.2 cm, Norwich Castle Museum & Art Gallery, Norwich
- Figure 128. ‘The Monument of Thomas Lord Morley in the Church at Higham’, 1817, etching, plate fifty-eight of the *Architectural Antiquities of Norfolk* bound in Strickland Charles Edward Neville Rolfe’s extra-illustrated copy of Frances Blomefield, *An Essay Towards a Topographical History of the County of Norfolk.*, 11 vols, expanded by Rolfe into thirty-seven vols (London, 1805-10), vol. 2, part. 3, Norfolk Heritage Centre, Norwich

- Figure. 129. James Basire the younger after James Adey Repton, 'View of Wolterton Manor House, at East Barsham, Norfolk, taken from the high Road', published in *Vetusta Monumenta*, vol. 4, 1811, engraving, 34.6 x 50.7 cm, Christchurch Art Gallery, New Zealand
- Figure 130. James Basire the younger after James Adey Repton, 'View of Wolterton Manor House, at East Barsham, Norfolk, taken from a Spot near the Abbey Barn', published in *Vetusta Monumenta*, vol. 4, 1811, etching, 33.8 x 50.3 cm, Christchurch Art Gallery, New Zealand
- Figure 131. 'The North-West Tower, Yarmouth', plate three of *Architectural Antiquities of Norfolk*, 1 vol. (1818), 1812, etching, plate size: 36.2 x 27 cm, paper size: 48.2 x 34.5 cm, Norwich Castle Museum & Art Gallery, Norwich
- Figure 132. Detail of 'The North-West Tower, Yarmouth'
- Figure 133. 'The Late Vicarage House, Methwold', plate eight of *Architectural Antiquities of Norfolk*, 1 vol. (1818), 1812, etching, plate size: 30.3 x 22.9 cm, paper size: 48.2 x 34.5 cm, Norwich Castle Museum & Art Gallery, Norwich
- Figure 134. Detail of 'The Late Vicarage House, Methwold'
- Figure 135. 'The Bishop's Palace Gate, Norwich', plate forty of *Architectural Antiquities of Norfolk*, 1 vol. (1818), 1814, etching, plate size: 37.5 x 27.4 cm, paper size: 48.2 x 34.5 cm, Norwich Castle Museum & Art Gallery, Norwich
- Figure 136. Detail of 'The Bishop's Palace Gate, Norwich'
- Figure 137. Joseph Clarendon Smith after Frederick Mackenzie, 'East Barsham House, Part of the South Front, Norfolk', published in John Britton, *Architectural Antiquities of Great Britain*, 4 vols (1809), vol. 2, 1808, etching, plate size: 20 x 14.3 cm, paper size: 26.7 x 20.5 cm, Yale Center for British Art, New Haven
- Figure 138. Detail of Smith after Mackenzie, 'East Barsham House, Part of the South Front, Norfolk'
- Figure 139. 'The Monument of Thomas Lord Morley in the Church at Higham', plate fifty-eight of *Architectural Antiquities of Norfolk*, 1 vol. (1818), 1817, etching, plate size: 42.1 x 26.7cm, paper size: 48.2 x 34.5 cm, Norwich Castle Museum & Art Gallery, Norwich
- Figure 140. Detail of 'The Monument of Thomas Lord Morley in the Church at Higham'
- Figure 141. 'Interior of South Runcton Church', plate nine of *Architectural Antiquities of Norfolk*, 1 vol. (1818), 1812, etching, plate size: 30 x 22.5 cm, paper size: 48.2 x 34.5 cm, Norwich Castle Museum & Art Gallery, Norwich
- Figure 142. 'Bromholm Priory', plate sixteen of *Architectural Antiquities of Norfolk*, 1812, etching, plate size: 22.5 x 30.1 cm, paper size: 34.5 x 48.2 cm, Norwich Castle Museum & Art Gallery, Norwich

- Figure 143. Giovanni Battista Piranesi, *Ruins of the Temples of Jupiter Tonans and Concord*, plate seven in the print series, *Antichità romane de'tempi della Repubblica, e de'primi imperatori*, 1748, etching, plate size: 13.8 x 27.1 cm, Metropolitan Museum of Art, New York
- Figure 144. 'Chapel on the Mount, Lynn', plate fifteen of *Architectural Antiquities of Great Britain*, 1812, etching, plate size: 30.2 x 22.4 cm, paper size: 48.2 x 34.5 cm, Norwich Castle Museum & Art Gallery, Norwich
- Figure 145. John 'Antiquary' Smith after Frederick Mackenzie, *The Red Mount Chapel, at Lynn, Norfolk*, published in John Britton, *Architectural Antiquities of Great Britain*, 4 vols (1812), vol. 3 1812, etching, plate size: 20.4 x 15.5 cm, paper size: 26.7 x 20.5 cm, Yale Center for British Art, New Haven
- Figure 146. *South Front of East Barsham House*, c.1817, pencil on paper, 33.5 x 22.2 cm, Norwich Castle Museum & Art Gallery, Norwich
- Figure 147. *The North-West Tower, Yarmouth*, 1811, pencil on paper, 30.2 x 21.9 cm, Yale Center for British Art, New Haven
- Figure 148. 'Abbey Church of St Georges de Bocherville, View from the South East', plate three of *Architectural Antiquities of Normandy*, 2 vols (1822), vol. 1, 1819, etching, plate size: 26.4 x 36.8 cm, paper size: 53.5 x 37 x cm, Norwich Castle Museum & Art Gallery, Norwich
- Figure 149. 'Church of St Peter, at Lisieux, South Transept', plate seventy-three of *Architectural Antiquities of Normandy*, 2 vols (1822), vol. 2, 1821, etching, plate size: 39.2 x 24 cm, paper size: 53.5 x 37 cm, Norwich Castle Museum & Art Gallery, Norwich
- Figure 150. 'Abbey Church of St. Etienne, Caen. West Front', plates twenty-one and twenty-two of the *Architectural Antiquities of Normandy*, 2 vols (1822), vol.1, 1819, plate size: 50.4 x 34.8 cm, paper size: 37 x 53.5 cm, Norwich Castle Museum & Art Gallery, Norwich
- Figure 151. 'Chateau Gaillard, North East View', plate eighty of the *Architectural Antiquities of Normandy*, 2 vols (1822), vol. 2, 1821, etching, plate size: 23 x 41.5 cm, paper size: 37 x 53.5 cm, Norwich Castle Museum & Art Gallery, Norwich
- Figure 152. 'Cathedral Church of Notre-Dame at Rouen, South Transept, from the Place de la Calande', plates forty-nine and fifty of the *Architectural Antiquities of Normandy*, 2 vols (1822), vol. 1, 1819, etching, plate size: 50.5 x 34.5, paper size: 52 x 34.9cm, Norwich Castle Museum & Art Gallery, Norwich
- Figure 153. 'Great House At Great Andelys', plate fifteen of the *Architectural Antiquities of Normandy*, 2 vols (1822), vol. 1, 1819, etching, plate size: 24.7 x 37.8 cm, paper size: 37 x 53.5 cm, Norwich Castle Museum & Art Gallery, Norwich
- Figure. 154. 'Church of St Nicholas, at Caen: East End', plate fifty-six of the *Architectural Antiquities of Normandy*, 2 vols (1822), vol. 2, 1821, etching, plate size: 33.1 x 29.5 cm, paper size: 37 x 53.5 cm, Norwich Castle Museum & Art Gallery, Norwich

- Figure 155. ‘Cathedral Church of Notre-Dame at Rouen, South Transept, from the Place de la Calande’, 1817, pencil and brown wash on paper, plate size: 47.7 x 33.2 cm, NG Commercial Banking UK
- Figure. 156. ‘Cathedral Church of Notre-Dame at Rouen, West Front, from the Place Notre-Dame’, plates fifty-one and fifty-two of the *Architectural Antiquities of Normandy*, 2 vols (1822), vol. 1, 1821, etching, plate size: 56 x 40.6 cm, paper size: 65.5 x 53.3 cm, Norwich Castle Museum & Art Gallery, Norwich
- Figure 157. James Basire the elder after John Carter, *West Front of Lichfield Cathedral*, 1782, engraving and etching, 22.5 x 12.5 cm, British Museum, London
- Figure 158. ‘Church of Oystreham’, plate ninety-eight of the *Architectural Antiquities of Normandy*, 2 vols (1822), vol. 2, 1821, etching, plate size: 34.5 x 26.4 cm, paper size: 53.5 x 37 cm, Norwich Castle Museum & Art Gallery, Norwich
- Figure 159. ‘The Church of St Ouen, at Rouen, plate seventy-six of the *Architectural Antiquities of Normandy*, 2 vols (1822), vol. 2, 1821, etching, plate size: 27 x 33.8 cm, paper size: 37 x 53.5 cm, Norwich Castle Museum & Art Gallery, Norwich
- Figure 160. *Domfront*, 1820, pencil and sepia wash on paper, 24.8 x 45.8 cm, Norwich Castle Museum & Art Gallery, Norwich
- Figure 161, Charles Turner after J. M. W. Turner, ‘Norham Castle’, 1816, etching and mezzotint, 17.8 x 26 cm, plate fifty-seven from the *Liber Studiorum*, part twelve, Royal Academy Archives, London
- Figure 162. Cotman after J. M. W. Turner, *Norham Castle*, c.1820, pencil on paper, 9.5 x 13.5 cm, plate fifty-seven of the *Liber Studiorum*, 1820, British Museum, London

Chapter 5

- Figure 163. *Castle Tower with Battlements by Water*, c.1830, pencil on paper, 20 x 17.1 cm, Norwich Castle Museum & Art Gallery, Norwich
- Figure 164. *Conway Castle*, after 1834, pencil on paper, 33.8 x 24.3 cm, Norwich Castle Museum & Art Gallery, Norwich
- Figure 165. *Shipping*, pencil on paper, after 1834, 16.5 x 26.7 cm, Norwich Castle Museum & Art Gallery, Norwich
- Figure 166. *Guildford, Surrey*, after 1834, pencil on paper, 23.6 x 29.4 cm, Norwich Castle Museum & Art Gallery, Norwich
- Figure 167. *Roman Soldier on Rearing Horse*, after 1834, pencil on paper, 16.9 x 21.6 cm, Norwich Castle Museum & Art Gallery
- Figure 168. *Soldier with Sword and Shield*, after 1834, pencil on paper, 24.9 x 17.2 cm, Norwich Castle Museum & Art Gallery, Norwich

- Figure 169. *Man in armour*, after 1834, pencil on paper, 25.4 x 16 cm, Norwich Castle Museum & Art Gallery, Norwich
- Figure 170. Detail of signature contained in *Roman Soldier on Rearing Horse*
- Figure 171. Detail of signature contained in *Man in armour*
- Figure 172. *Dieppe from the Heights to the East of the Port, looking down upon the Harbour Churches of St. Jacques and St. Remi, and along the coast towards St. Vallery*, Exh. NSA 1823 and/or 1824 and SPWC 1825, 28.4 x 53.3 cm, Victoria & Albert Museum, London
- Figure 173. Detail of *Dieppe from the Heights*
- Figure 174. *Landscape*, c.1835, pencil, black chalk and watercolour, 34.7 x 45.9 cm, Norwich Castle Museum & Art Gallery, Norwich
- Figure 175. Detail of *Landscape*
- Figure 176. *Silver Birches*, 1831, watercolour on paper, 41.2 x 29.2 cm, Norwich Castle Museum & Art Gallery, Norwich
- Figure 177. *Silver Birches*, c.1835, oil on canvas, 76.2 x 62.7 cm, Norwich Castle Museum & Art Gallery, Norwich
- Figure 178. *Storm on Yarmouth Beach*, 1831, watercolour, bodycolour, paste medium, pen and ink on paper, 36.8 x 53.7 cm, Norwich Castle Museum & Art Gallery, Norwich
- Figure 179. *St Benet's Abbey*, 1831, watercolour on paper, 32 x 47 cm, Norwich Castle Museum & Art Gallery, Norwich
- Figure 180. *Drainage Mills in the Fens*, c.1835, oil on canvas, 55.2 x 91.8 cm Yale Center for British Art, New Haven
- Figure 181. *The Baggage Wagon*, c.1824-28, oil on panel, 43 x 35.2 cm, Norwich Castle Museum & Art Gallery, Norwich
- Figure 182. *Mount St. Michael, on the side of Pontorson, Normandy: showing the Phenomenon of the Mirage*, Exh. NSA 1823 and/or 1824 and SPWC 1825, watercolour over pencil on paper, British Museum, London
- Figure 183. *Abbatial House, of the Abbey of St. Ouen at Rouen, taken down in 1817*, Exh. NSA 1824 and SPWC 1825, watercolour, pen, ink and bodycolour on paper, 42.3 x 57.3 cm, Norwich Castle Museum & Art Gallery, Norwich
- Figure 184. *Hôtel de Ville, Ulm*, Exh. SPWC 1831, watercolour on paper, 50.6 x 70 cm, National Gallery of Canada, Ottawa
- Figure 185. J. M. W. Turner, *Richmond Hill*, c.1820-5, watercolour and bodycolour on paper, 29.7 x 48.9 cm, National Museums and Galleries on Merseyside (Lady Lever Art Gallery, Port Sunlight)

- Figure 186. Bernard William Cooke after J. M. W. Turner, 'Torbay from Brixham' from *Picturesque Views on the Southern Coast of England*, 1821, engraving on paper, 15.8 x 24.2 cm, Tate, London
- Figure 187. *In the Bishop's Garden (Landscape)*, c.1824-5, oil on millboard, 25.6 x 18.9 cm, Norwich Castle Museum & Art Gallery, Norwich
- Figure 188. *The Mishap*, c.1824-8, oil on panel, 43 x 35.4 cm, Norwich Castle Museum & Art Gallery, Norwich
- Figure 189. *The Drop Gate*, c.1826, oil on canvas, 34.9 x 26 cm, Tate, London
- Figure 190. *The Silent Stream, Normandy*, 1824-8, oil on canvas, 40.2 x 33.5cm, Norwich Castle Museum & Art Gallery, Norwich
- Figure 191. Richard Parkes Bonington, *A Wooded Lane*, oil on millboard, 27.9 x 22.9 cm, Yale Center for British Art, New Haven
- Figure 192. Richard Parkes Bonington, *In the Forest of Fontainebleau*, 1825, oil on millboard, 32.4 x 24.1 cm, Yale Center for British Art, New Haven
- Figure 193. J. M. W. Turner, *A Beech Wood with Gypsies round a Campfire*, c.1799-1801, oil on paper laid on panel, 27 x 19 cm, Fitzwilliam Museum, Cambridge
- Figure 194. *Dutch Boats off Yarmouth, Prizes during the War*, Exh. BI 1823 and NSA 1824, oil on mahogany panel, 43.5 x 63.5 cm, Norwich Castle Museum & Art Gallery, Norwich
- Figure 195. *An Ecclesiastic*, Exh. Bath Society for the Encouragement of the Fine Arts 1839, oil and pencil on panel, 44.7 x 33.9 cm, Norwich Castle Museum & Art Gallery, Norwich
- Figure 196. *A Monk*, Exh. Bath Society for the Encouragement of the Fine Arts 1839, oil and pencil on panel, 44.8 x 34 cm, Norwich Castle Museum & Art Gallery, Norwich
- Figure 197. John Sell and Miles Edmund Cotman, *The Wreck of the Houghton Pictures Consigned to the Empress Catherine of Russia, including the gorgeous landscape by Rubens of the Waggoner*, Exh. SPWC and Royal Institution, Manchester 1838, watercolour on paper, 68 x 90.2 cm, Fitzwilliam Museum, Cambridge
- Figure 198. *The Drawing Master*, Exh. Norfolk and Norwich Art Union 1839, watercolour, pencil, and painted paper pasted onto paper, 33.2 x 47.8 cm, Norwich Castle Museum & Art Gallery, Norwich

Introduction



Figure 1. John Sell Cotman, *Horse Loaded with Artists' Paraphernalia*, c.1834, pencil on paper, 23.9 x 30.4 cm, Fitzwilliam Museum, Cambridge

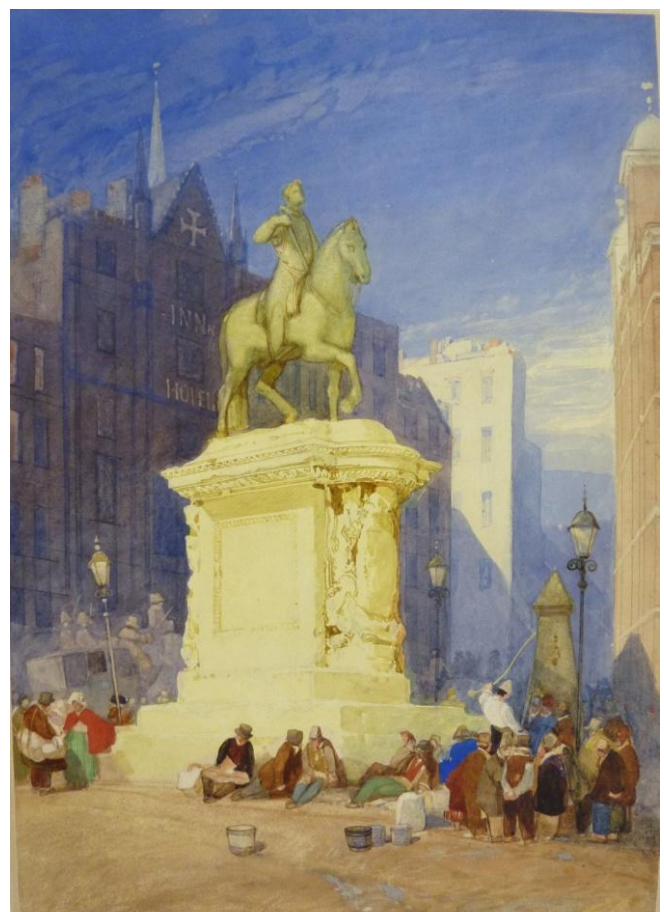


Figure 2. *Statue of King Charles I, Charing Cross*, 1832, pencil, watercolour, bodycolour and brown ink, 43.3 x 31.4, Norwich Castle Museum and Art Gallery, Norwich

Chapter 1



Figure 3. *The Kitchen in the Artist's Father's House*, 1801, graphite and watercolour on wove paper, 25.7 x 20.3 cm, Private Collection, UK

* I have as yet been unable to locate a coloured reproduction and the precise whereabouts of this watercolour.

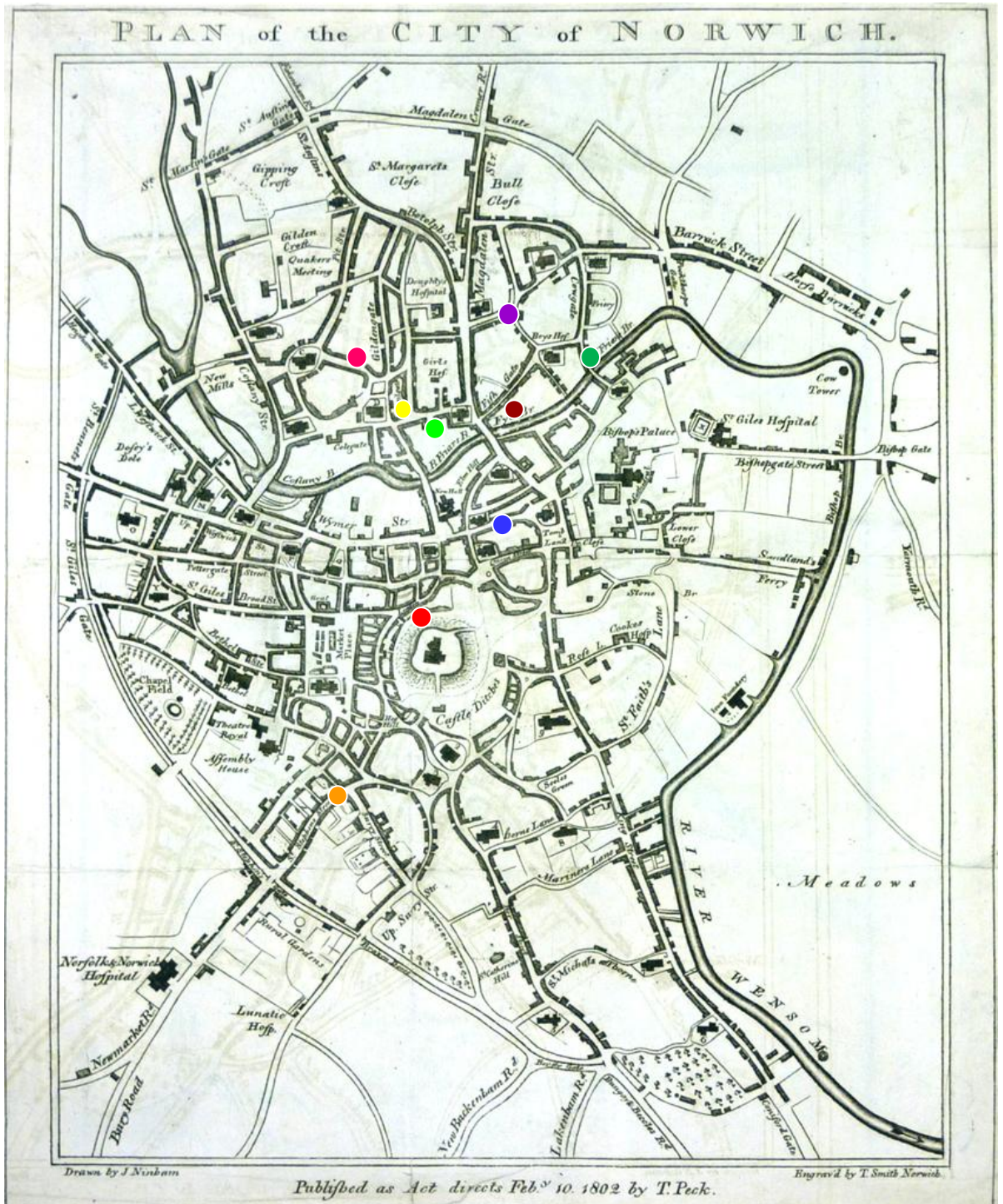


Figure 4. Annotated Map of Norwich, T. Smith after John Ninham, *Plan of the City of Norwich*, engraving, published by T. Peck, Norwich, 10 February 1802, Norwich Castle Museum & Art Gallery, Norwich (Original in colour)

- | | | |
|-----------------------------|----------------------|-----------------------------------|
| ● St Mary Colsary Church | ● St Edmund's Church | ● Bridge Street, St George's |
| ● St Saviour's Church | ● St Clement Church | ● Cockey Lane, St Andrew's |
| ● St George Colegate Church | ● St Andrew's Church | ● St Stephen's Road, St Stephen's |

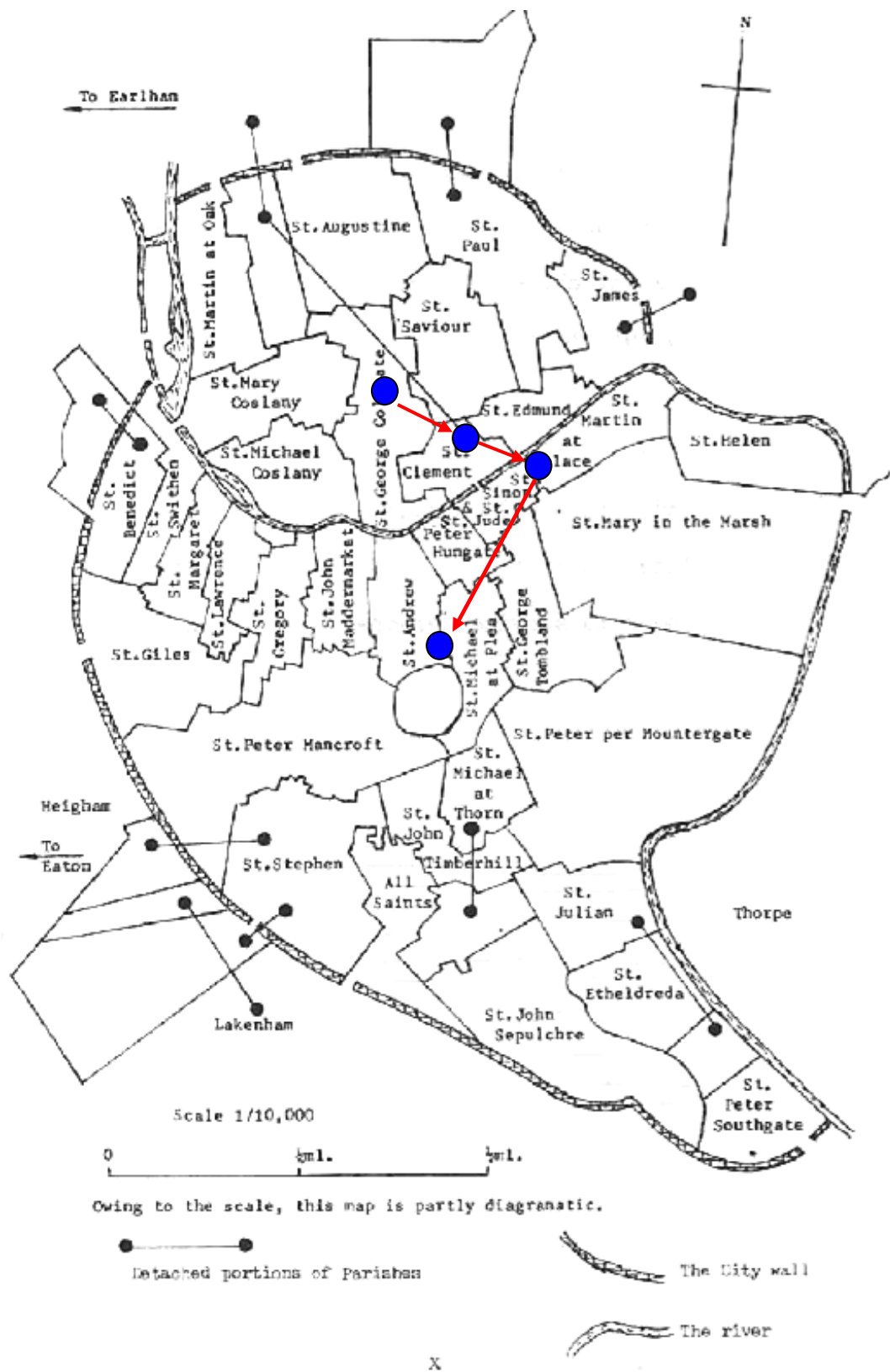


Figure 5. Annotated Map of Norwich Parishes, from Index to Norwich Marriages 1813-17, compiled by John F. Fone. Norfolk & Norwich Genealogical Society, vol. 14 (1982), Norwich (Original in colour)

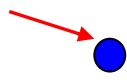

 charts the parishes in which the Cotman family are thought to have lived and moved



Figure 6. *House at St Stephen's Road, Norwich, c.1794*, pen and grey ink with grey, blue and red wash on paper, 13.2 x 17.5 cm, British Museum, London



Figure 7. Augustus Pugin and Thomas Rowlandson, *Tradecard of Rudolph Ackermann's Repository of Arts at 101 Strand, London* later published in *Repository of the Arts*, vol. 1, part 1, published London, 1809, hand-coloured etching with aquatint, 13.9 x 24.6 cm, British Museum, London



Figure 8. Thomas Rowlandson, 'Entrance of Tottenham Court Road Turnpike, with a view of St James's Chapel', plate three of *Views of London*, published by Rudolph Ackermann, London, 1798, hand-coloured acquaint, 27 x 22cm, Museum of London, London



Figure 9. Detail of Rowlandson, 'Entrance of Tottenham Court Road Turnpike, with a view of St James's Chapel'



Figure 10. John Henderson, *Dover Harbour*, c.1790-5, pencil on paper, 27.4 x 43.1 cm, British Museum, London



Figure 11. J. M. W. Turner and Thomas Girtin, *Dover Harbour: Small Boats by the Quay*, 1795-6, pencil and watercolour on paper, 34 x 42.8 cm, Tate, London



Figure 12. *Dover Harbour*, 1799, pencil on paper, 14.9 x 14.8 cm, Leeds Art Gallery, Leeds



Figure 13. *Dover Harbour*, 1799, pencil on paper, 12.8 x 13.3 cm, Leeds Art Gallery, Leeds



Figure 14. *Dover Harbour*, 1799, pencil on paper, 11.2 x 18.9 cm, Leeds Art Gallery, Leeds



Figure 15. *Dover Harbour*, 1799, pencil on paper, 14.9 x 16.2 cm, Leeds Art Gallery, Leeds



Figure 16. *Dover Harbour*, 1799, pencil on paper, 11.8 x 18.5cm, Leeds Art Gallery, Leeds

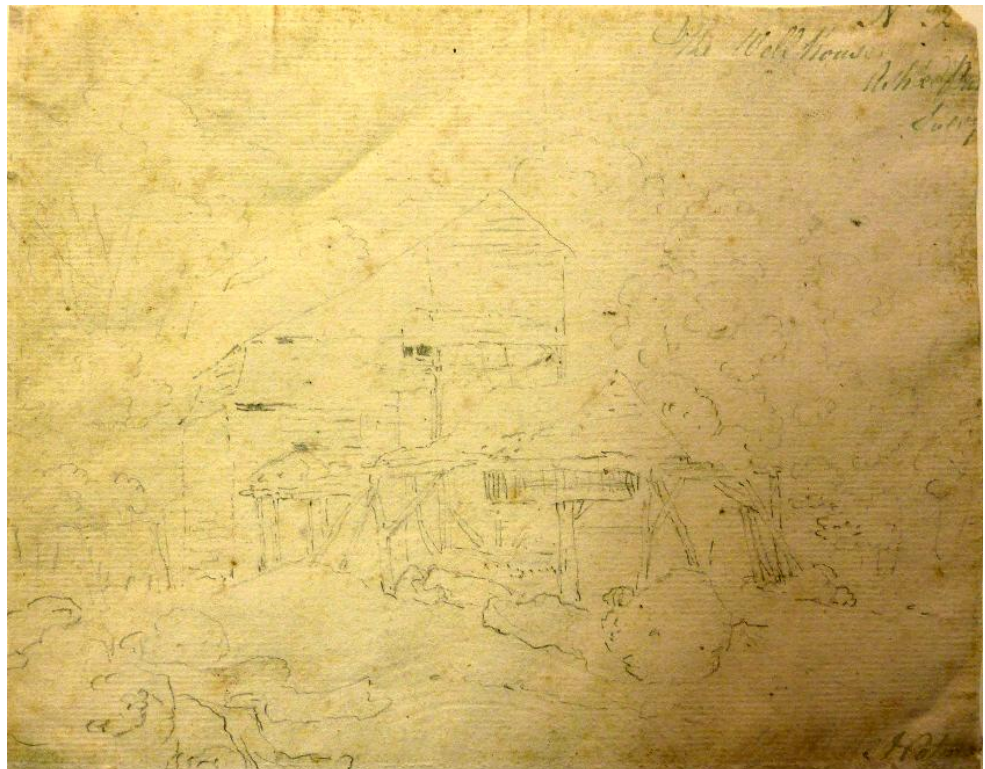


Figure 17. *The Well House, Ashted Park, Surrey*, pencil on paper, 15.9 x 19.8 cm, Leeds Art Gallery, Leeds

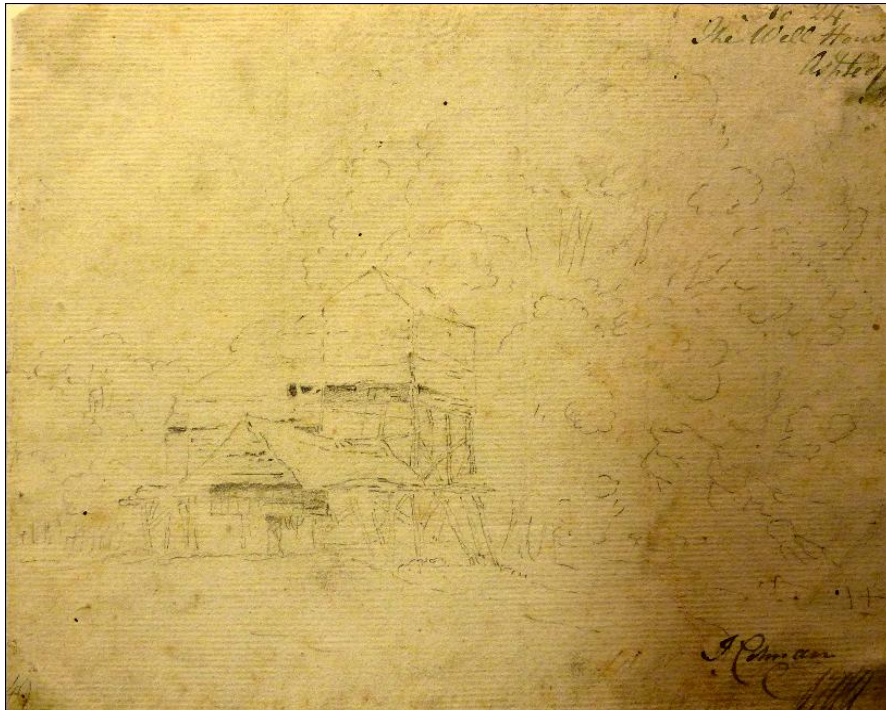


Figure 18. *The Well House, Ashted Park, Surrey*, pencil paper, 15.9 x 19.2 cm, Leeds Art Gallery, Leeds



Figure 19. Thomas Monro, *The Well House, Ashted Park, Surrey*, c.1795, black ink, wash and white bodycolour on paper, 11.3 x 17.8 cm, Fogg Museum, Harvard



Figure 20. Thomas Girtin, *The Well House, Ashted Park, Surrey*, c.1795, pencil and watercolour on paper, 49.9 x 86.5 cm, whereabouts unknown



Figure 21. *A Cottage in Guildford Churchyard, Surrey*, inscribed in pencil on verso 'Cotman 14 March 1800', pencil and watercolour on paper, 35.6 x 53.2 cm, Nottingham Castle Museum & Art Gallery, Norwich

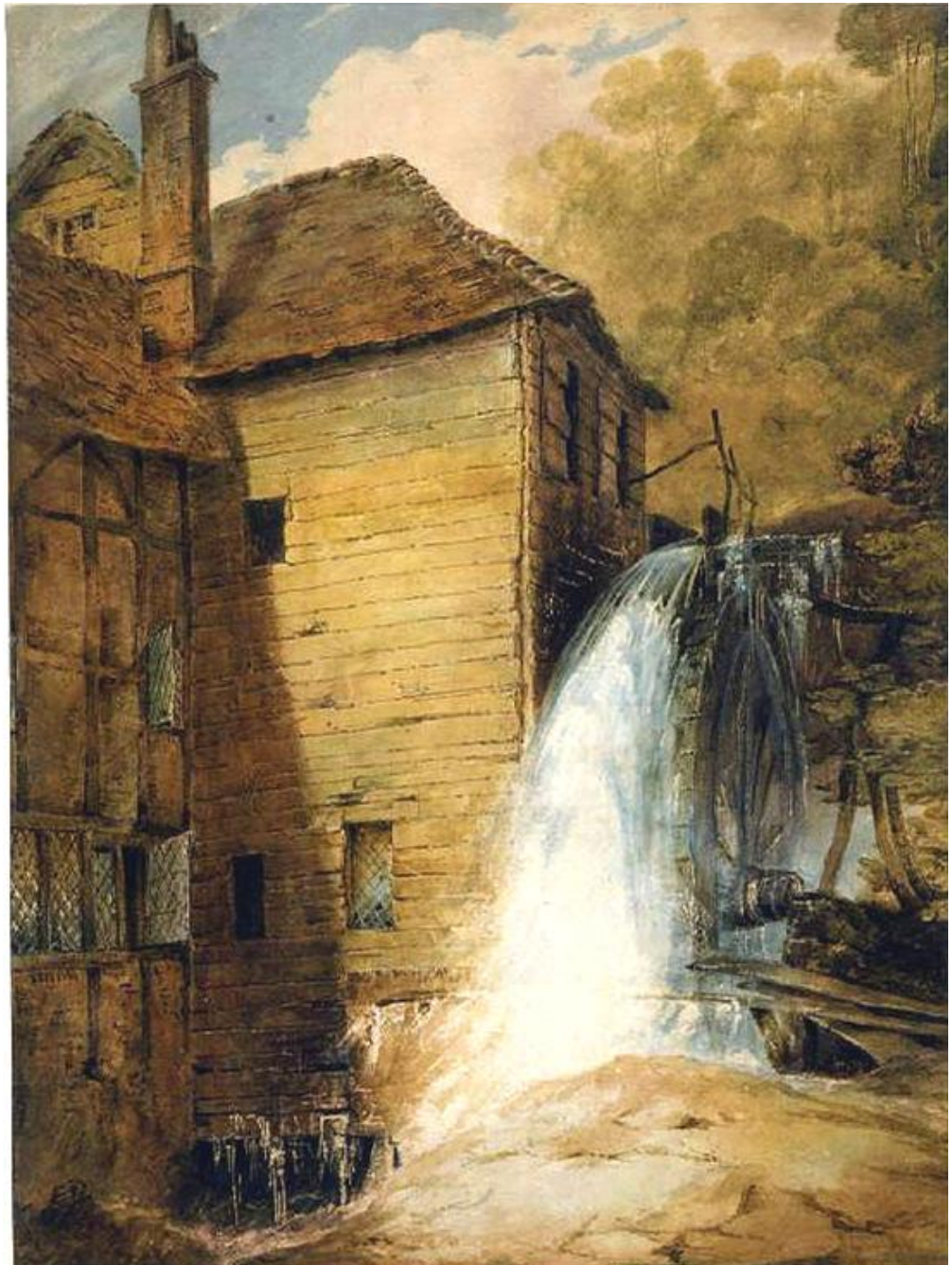


Figure 22. *A Water Mill near Dorking, Surrey*, Exh. Society of Artists 1800, watercolour over pencil on paper, 48.6 x 36 cm, Fitzwilliam Museum, Cambridge



Figure 23. *High on a Rock*, 1802, pencil and wash on paper, 22.2 x 32.4 cm, Victoria & Albert Museum, London



Figure 24. Thomas Girtin, *An Ancient Castle*, 1799, pencil and wash on paper, 20.4 x 30.3 cm, Tate, London

Figure 25. Joseph Powell, *Landscape with Castle*, 1803/4, pencil and sepia wash on paper, 30.6 x 44.3 cm, Victoria & Albert Museum, London



Figure 26. Joshua Cristall, *Landscape with Castle*, 1803/4, pencil and sepia wash on paper, 30 x 44 cm, Victoria & Albert Museum, London



Figure 27. Paul Sandby Munn, *Landscape with Castle*, 1803/4, pencil and wash on paper, 30 x 42.1 cm, Victoria & Albert Museum, London

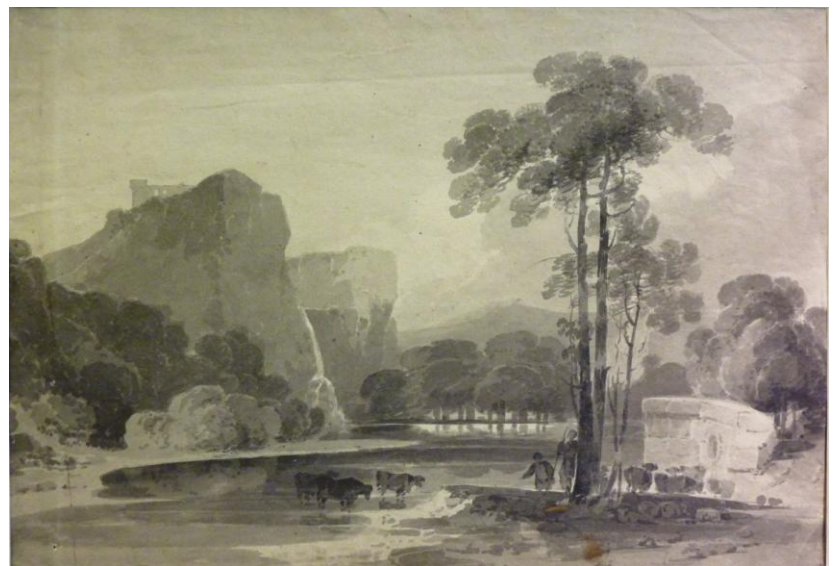




Figure 28. *Landscape with Castle*, 1803/4, pencil and sepia wash on paper, 36.2 x 49.4 cm, Victoria & Albert Museum, London



Figure 29. *Eve*, 1803/4, pencil and sepia wash on paper, 31 x 44.4 cm Victoria & Albert Museum, London

Figure 30. Detail of *Eve*





Figure 31. John Varley, *Pale Melancholy*, 1803/4, pencil and wash on paper, 48.1 x 37 cm, Victoria & Albert Museum, London

Figure 32. Detail of Varley, *Pale Melancholy*

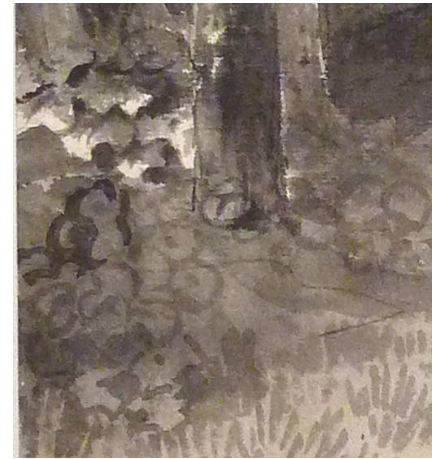


Figure 33. Joshua Cristall, *Dante and Virgil on the Bridge*, 1803-4, pencil and wash on paper, 34 x 22 cm, Victoria & Albert Museum, London



Figure 34. *Mountainous Landscape with a Blasted Tree*, c.1803, pencil and wash on paper, 29.6 x 44.7 cm, Tate, London



Figure 35. *Wooded Scene*, 1803-4, pencil and wash on paper, 33 x 48.8 cm, Victoria & Albert Museum, London



Figure 36. *Ode to Spring*, 1803-4, pencil and wash on paper, 34 x 49.2 cm, Victoria & Albert Museum, London



Figure 37. *Behold Yon Oak*, 1804, pencil and wash on paper, 31.2 cm x 44.7 cm, Norwich Castle Museum & Art Gallery, Norwich



Figure 38. *Gnarled Oak*, 1804, pencil and watercolour on paper, 31.2 x 25.5cm, Norwich Castle Museum & Art Gallery, Norwich



Figure 39. Joseph Powell, *Landscape Scene*, 1803/4, pencil and sepia wash on paper, 25.4 x 38.5 cm, Victoria & Albert Museum, London



Figure 40. Detail of Powell, *Landscape Scene*



Figure 41. William Havell, *Wooded Scene*, 1803/4, pencil and sepia wash on paper, 32.1 x 59 cm, Victoria & Albert Museum, London

Chapter 2



Figure 42. *Distant View of Newburgh Priory*, 1803-4, Exh. RA 1804, pencil and watercolour on paper, 38.9 x 79.4 cm, Newburgh Priory, Yorkshire

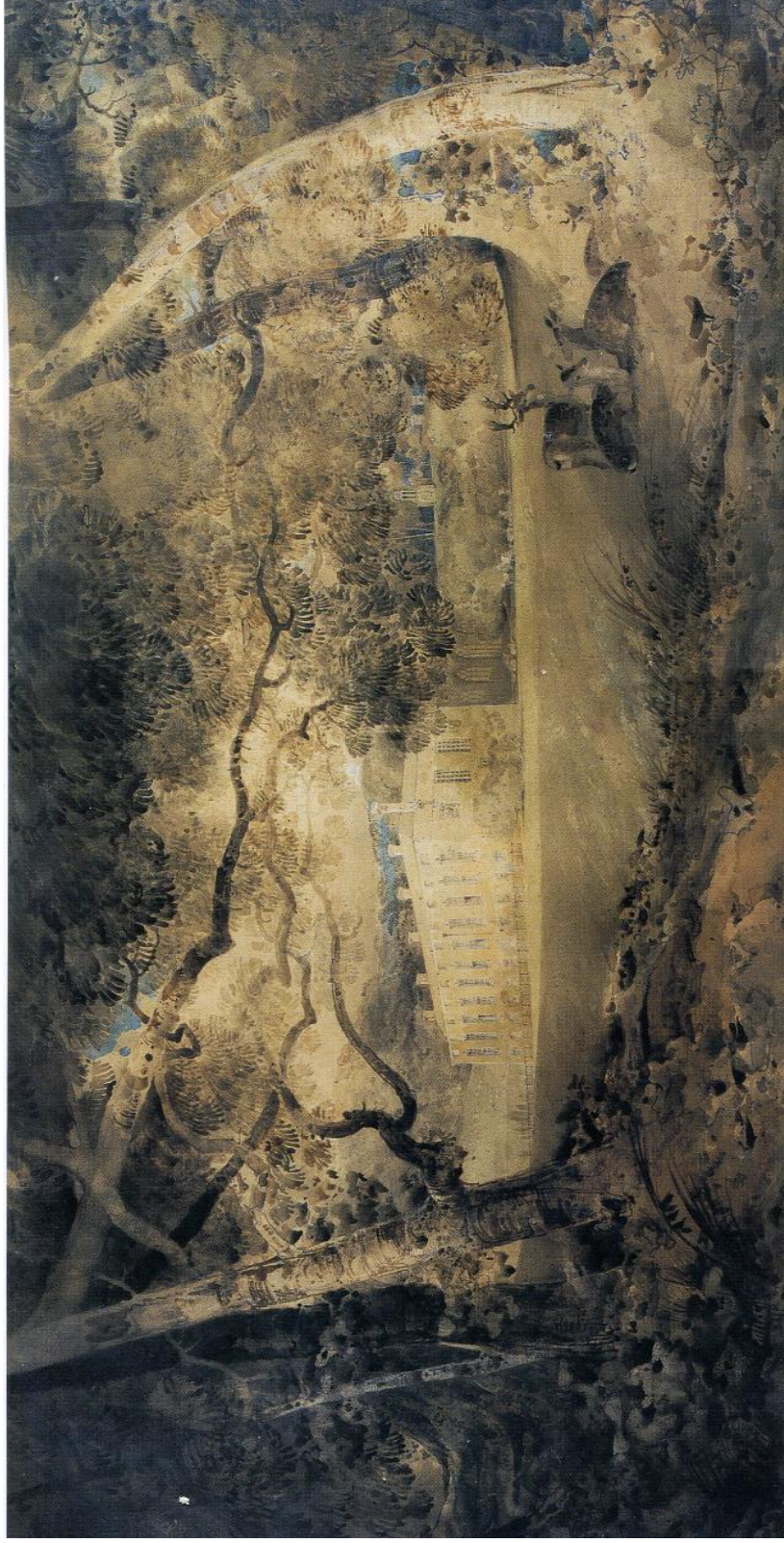


Figure 43. *View of Newburgh Priory*, 1803-4, Exh. RA 1804, pencil and watercolour on paper, 38.9 x 79.4 cm, Newburgh Priory, Yorkshire



Figure 44. Thomas Girtin, *Kirkstall Abbey, Yorkshire*, 1800, watercolour on paper, 32 x 52 cm, British Museum, London



Figure 45. Paul Sandby Munn, *Kirkstall Abbey*, 1803, pen and grey ink over pencil on paper, 197 x 29.2 cm, British Museum, London



Figure 46. J. M. W. Turner, *Harewood House from the north east*, 1797, watercolour on paper, 49.5 x 64.5 cm, Harewood House, Yorkshire

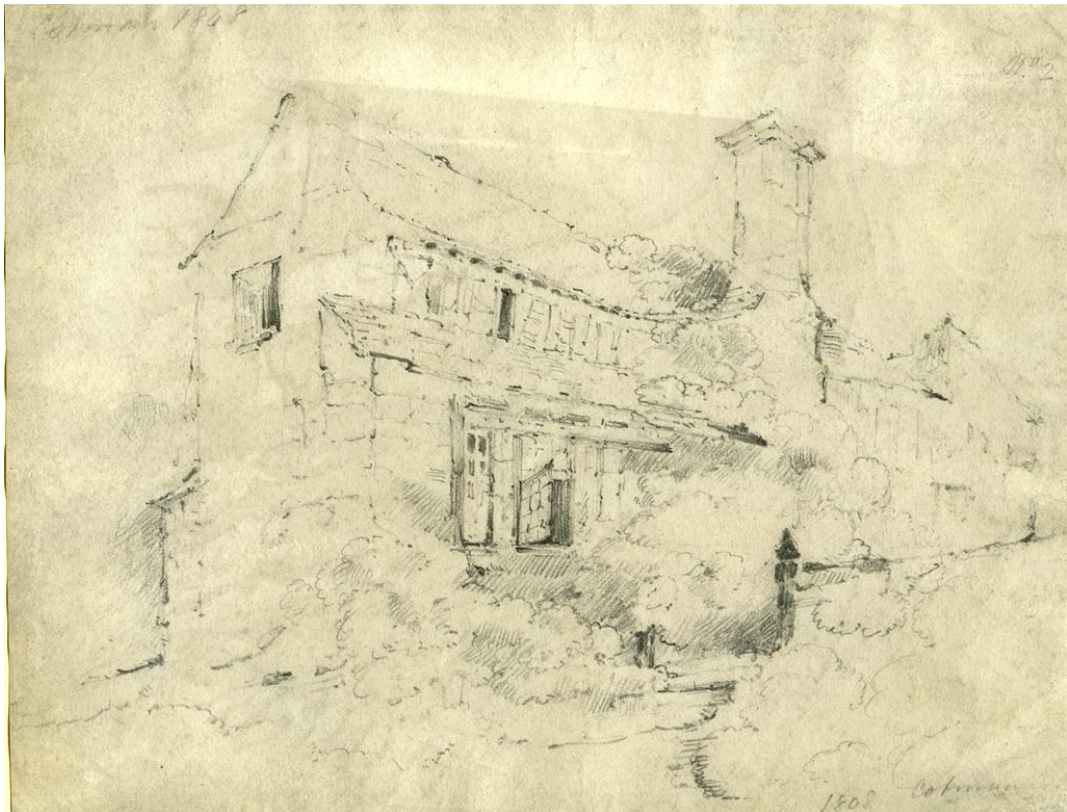


Figure 47. *Cottage at Bolton*, 1803, pencil and wash on paper, 17.1 x 22.3 cm, Norwich Castle Museum & Art Gallery, Norwich



Figure 48. Paul Sandby Munn, *Cottage at Bolton*, 1803, pencil on paper, 11.1 x 18.7 cm, Victoria & Albert Museum, London



Figure 49. Thomas Hearne, *Cottage*, c.1795, pencil on paper, 32.4 x 23.8 cm, Yale Center for British Art, New Haven



Figure 50. John Varley, *Cottage at Bolton*, pencil on paper, c.1803, 19.5 x 33 cm, Tate, London



Figure 51. *Riveaulx Abbey*, 1803, pencil on paper, 37.1 x 27 cm, Tate, London

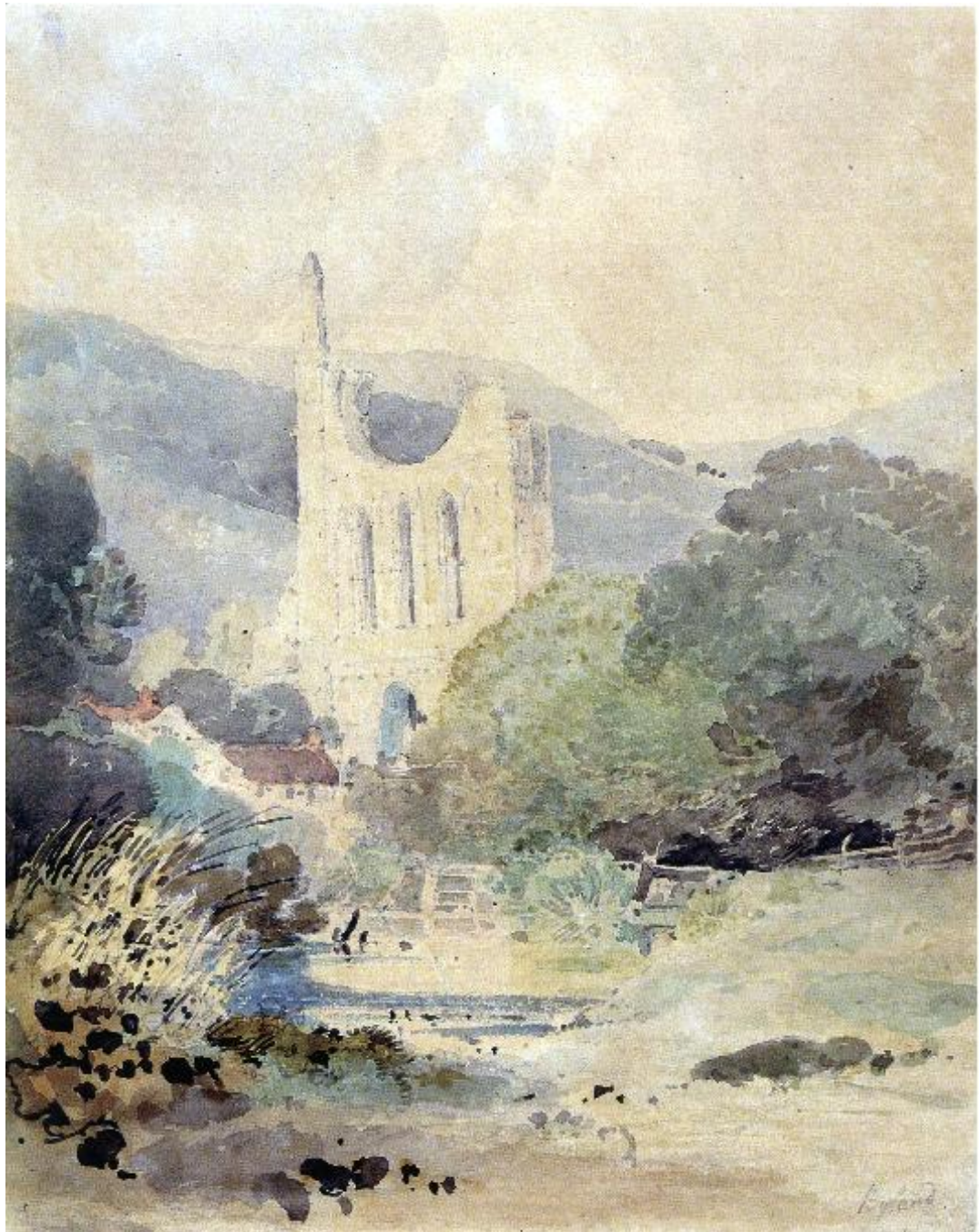


Figure 52. *West Front of Byland Abbey*, dated 7 September 1803, pencil and watercolour on paper, 31.8 x 24.8cm, Amgueddfeydd ac Oriolau Cenedlaethol Cymru, National Museums & Galleries of Wales, Cardiff



Figure 53. *Teresa Ann Cholmeley*, dated 10 September 1803, pencil on paper, 25.4 x 19.5 cm, York City Art Gallery, York



Figure 54. *Francis Cholmeley*, 1803, pencil on paper, 25.4 x 19.5 cm, York City Art Gallery, York



Figure 55. *Francis Cholmeley the Younger*, 1803, pencil on paper, 25.4 x 19.5 cm, York City Art Gallery, York



Figure 56. *Anne Cholmeley*, 1803, pencil on paper, 25.4 x 19.5 cm, York City Art Gallery, York



Figure 57. *Mary Catherine Cholmeley*, 1803, pencil on paper, 25.4 x 19.5 cm, York City Art Gallery, York



Figure 58. *Katherine Henrietta Cholmeley*, 1803, pencil on paper, 25.4 x 19.5 cm, York City Art Gallery, York



Figure 59. *Harriet Cholmeley*, 1803, pencil on paper, 25.4 x 19.5 cm, York City Art Gallery, York



Figure 60. George Dance, *Henry Fuseli*, dated 2 June 1793, pencil and pink chalk on paper, 25.2 x 19 cm, Royal Academy, London



Figure 61. John Downman, *Frances Downman*, 1796, charcoal and stump touched with red and black chalk on paper, 22.3 x 17.3 cm, British Museum, London

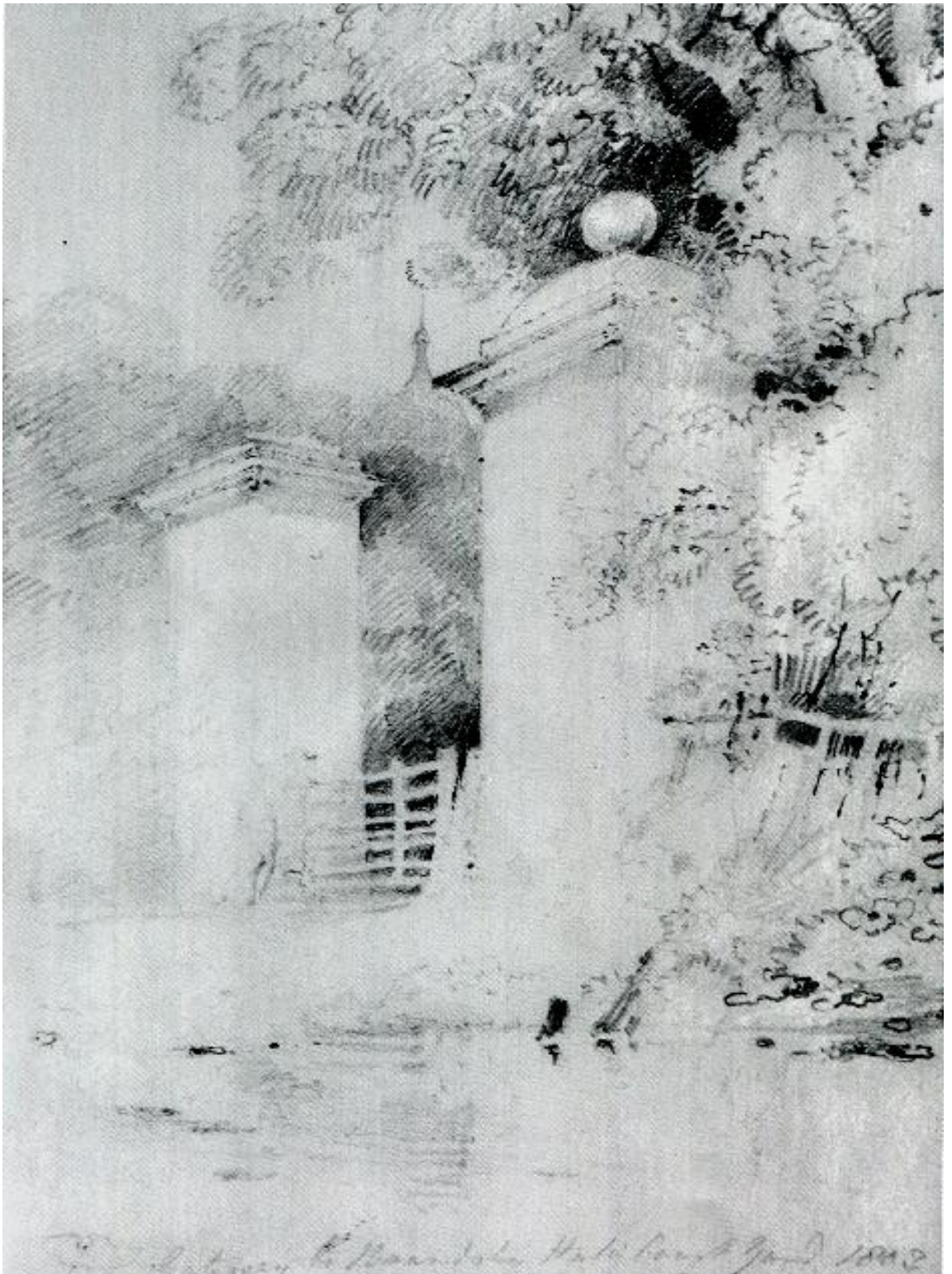


Figure 62. *The Gates to Brandsby Courtyard*, 1803, pencil on paper, 25.5 x 17.8 cm, Private Collection, UK

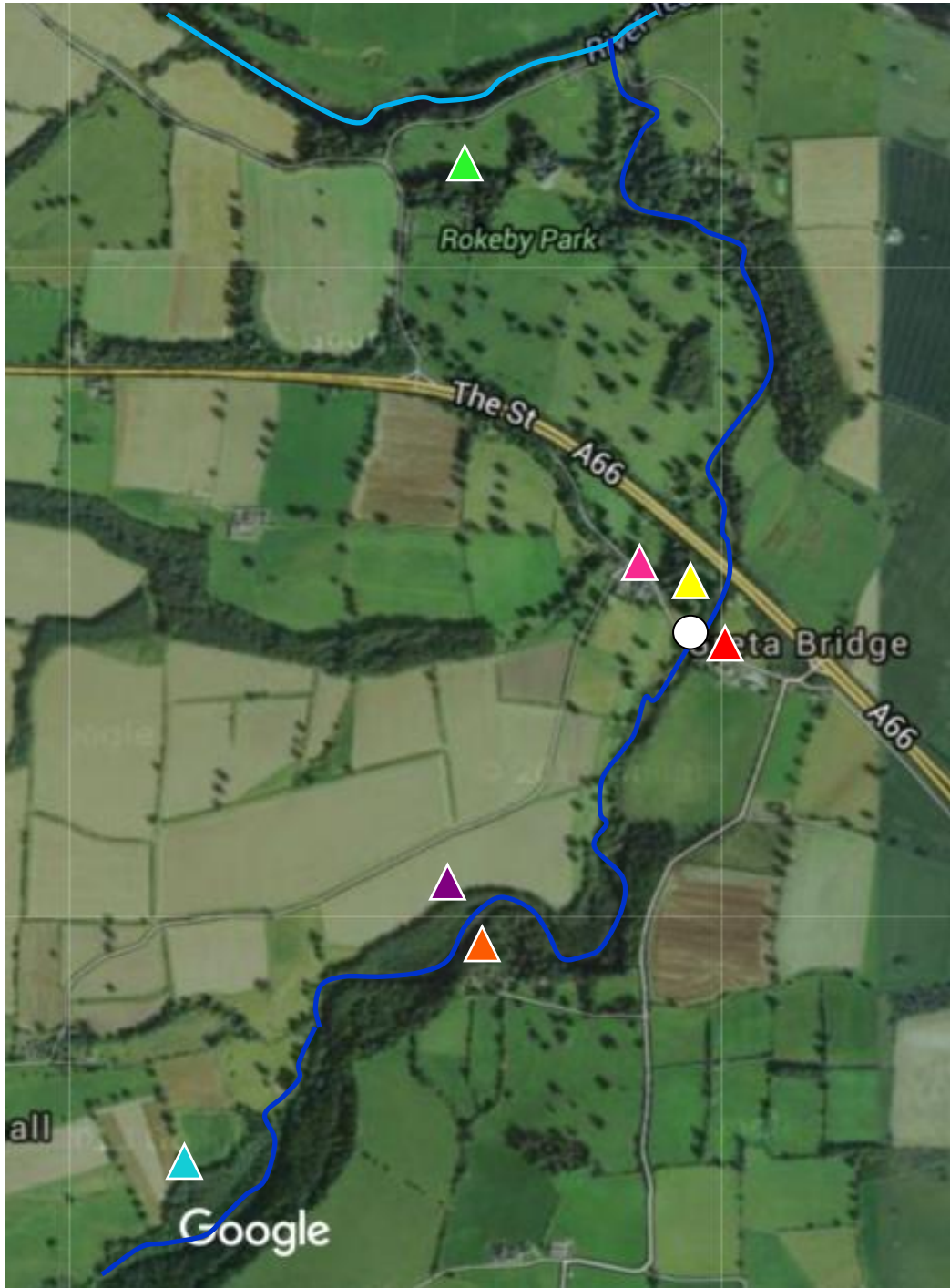


Figure 63. Annotated Googlemap of Rokeby Park and immediate vicinity

Key to points and pins:

green triangle	Rokeby Hall
red triangle	The George Inn and Post Office
yellow triangle	Rokeby Park south-east gates
pink triangle	The Morrill Arms
white spot	Greta Bridge
purple triangle	Mill Wood, viewing point for <i>Distant View of Greta Bridge</i> , Fig. 64
orange triangle	Mill Wood, viewing point for <i>On the River Greta</i> , Figs 73 and 74
light blue triangle	Brignall Banks, viewing point for <i>Brignall Banks on the Greta</i> , Fig. 68
light blue line	River Tees
dark blue line	River Greta



Figure 64. *Distant View of Greta Bridge*, 1805, pencil and watercolour on paper, 26 x 39.4 cm, Tate, London



Figure 65. John Varley, *View of Bodenham and the Malvern Hills, Herefordshire*, 1801, watercolour and pencil on paper, 31.1 x 52.1 cm, Tate, London



Figure 66. John Varley, *Harewood House from the South East*, 1803, pencil and watercolour on paper, 55.5cm x 87 cm, Harewood House, Yorkshire



Figure 67. *Barnard Castle from Towler Hill*, Exh. RA 1806, watercolour and pencil on paper, 33 x 43.2 cm, Leeds City Art Gallery, Leeds



Figure 68. *Brignall Banks on the Greta*, 1805, pencil and watercolour on paper, 18.8 x 28.3 cm, Leeds City Art Gallery, Leeds



Figure 69. *Bank of the Greta*, 1805-6, watercolour and pencil on paper, 22.5 x 32.9 cm, British Museum, London



Figure 70. *In Rokeby Park*, 1805, pencil and watercolour on paper, 327 x 22.9 cm, Yale Center for British Art, New Haven



Figure 71. *On the Greta*, 1805, pencil and watercolour on paper, 30.6 x 22.6 cm, Norwich Castle Museum & Art Gallery, Norwich



Figure 72. *On the Greta*, 1805, pencil and watercolour on paper, 22.8 x 33.3 cm, Tate, London



Figure 73. *On the Greta*, 1805, watercolour and pencil on paper, 45.1 x 35.1 cm, Norwich Castle Museum & Art Gallery, Norwich

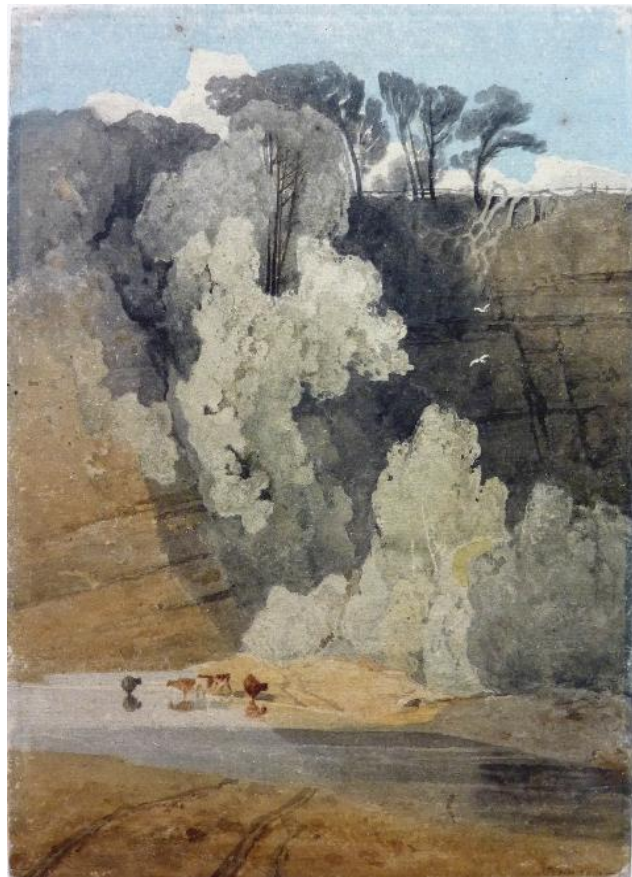


Figure 74. *On the River Greta*, 1805-6, watercolour and pencil on paper, 32.6 x 22.9 cm, Norwich Castle Museum & Art Gallery, Norwich

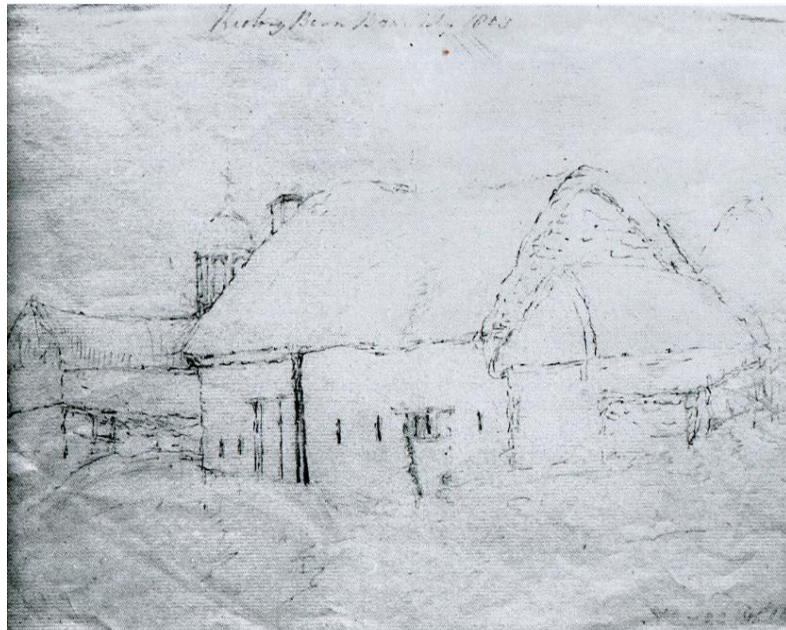


Figure 75. Anne Cholmeley,
Rectory Barn, Brandsby, pencil
on paper, 19 x 23.5 cm, Private
Collection, UK

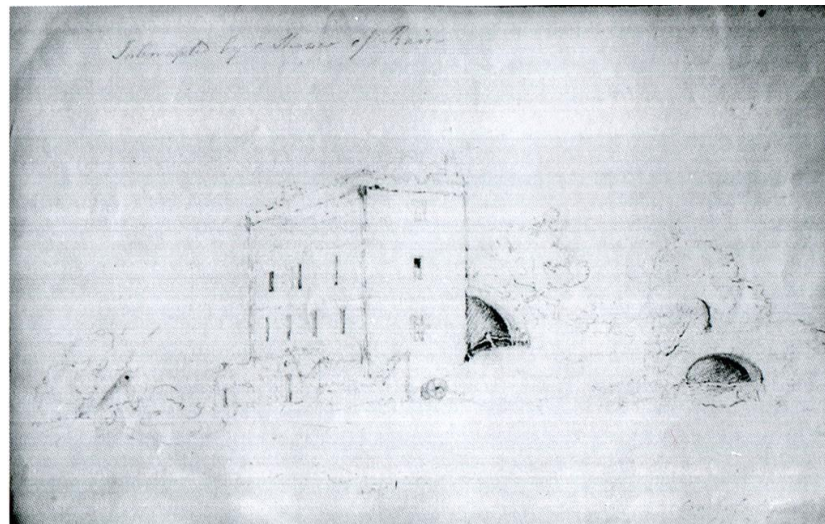


Figure 76. Anne or Katherine
Cholmeley, *Crayke Castle*,
1803, pencil on paper, 19.3 x
29 cm, Private Collection, UK

Figure 77. Katherine
Cholmeley, *Timbered House*,
Wales, dated 19 June 1804,
pencil on paper, 17.6 x 14.3
cm, Private Collection, UK

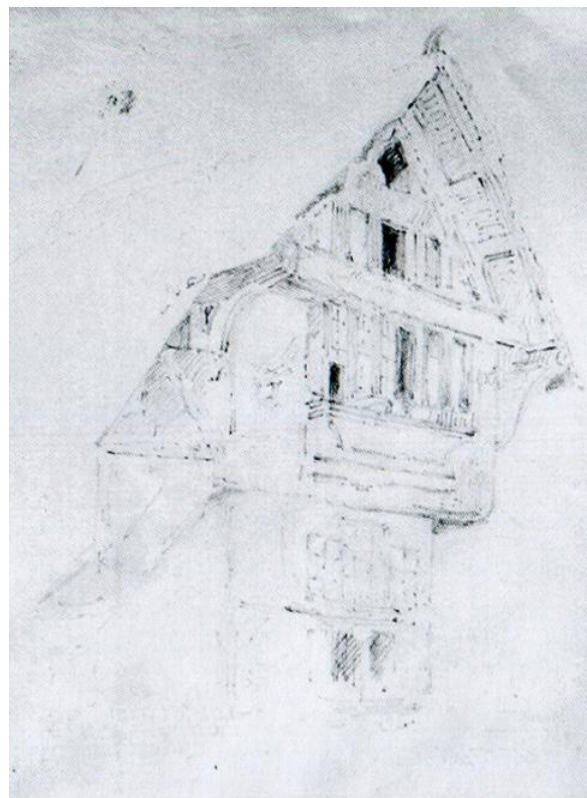


Figure 78. *Urn on a Pedestal, at Castle Howard,* 1805, pencil on paper, British Museum, London



Figure 79. *Urn on a Pedestal, at Castle Howard,* 1805-6, monochrome wash on paper, 20.6 x 16.1 cm, Victoria & Albert Museum, London





Figure 80. *Durham Cathedral*, Exh. RA 1806, pencil and watercolour on paper, 43.6 x 33 cm, British Museum, London



Figure 81. *Durham Cathedral* – split, Exh. RA 1806, pencil and watercolour on paper, 43.6 x 33 cm, British Museum, London



Figure 82. Thomas Girtin, *Durham Cathedral*, c.1796, watercolour on paper, 47.1 x 41.5 cm, British Museum, London



Figure 83. William Daniell, *Durham Cathedral*, 1805, 40 x 64 cm, watercolour and pencil on paper, Victoria & Albert Museum, London

Chapter 3



Figure 84. *Fountains Abbey*, Exh. RA 1804, watercolour and pencil on paper, 85.9 x 60.6 cm, Fitzwilliam Museum, Cambridge

Figure 85. J. M. W. Turner, *Transept of Tintern Abbey, Monmouthshire*, Exh. RA 1795, watercolour, pencil and pen and ink on paper, 35.5 x 26 cm, Ashmolean Museum, Oxford



Figure 86. Thomas Girtin, *Interior of Lindisfarne Priory, Northumberland*, c.1797, watercolour on paper, 53.1 x 39.5 cm, British Museum, London





Figure 87. *Bolton Abbey from the south*, c.1803, pencil and watercolour on paper, 20.7 x 32.8 cm, Birmingham Museums & Art Gallery, Birmingham

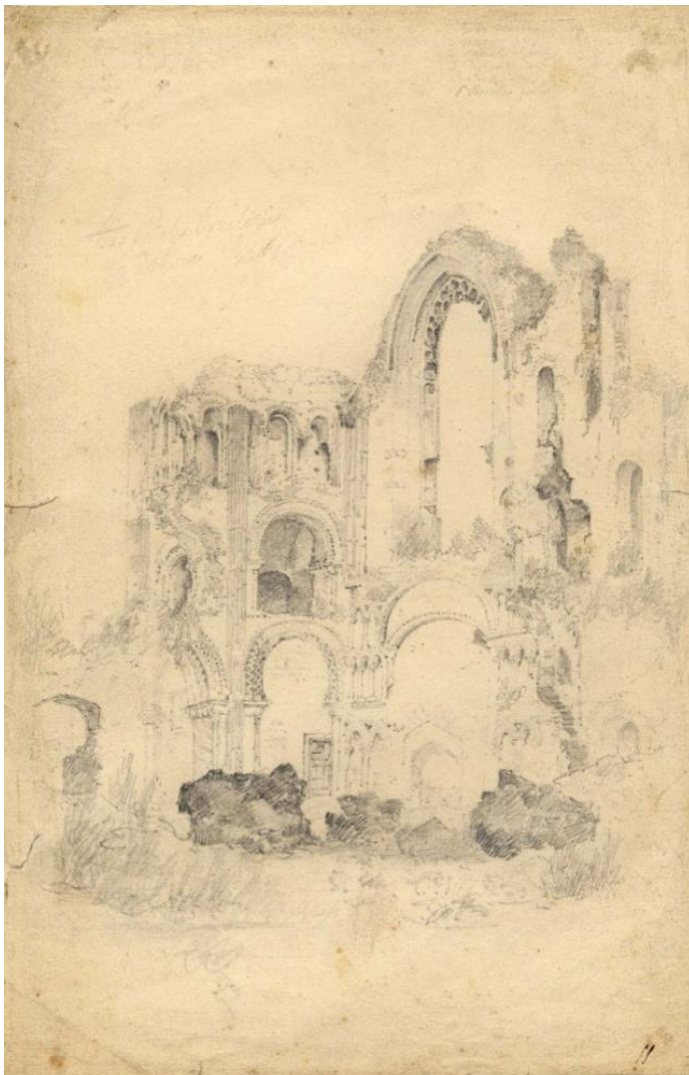


Figure 88. *Castle Acre Priory*, c.1804, pencil on paper, 38.1 x 25 cm, British Museum, London

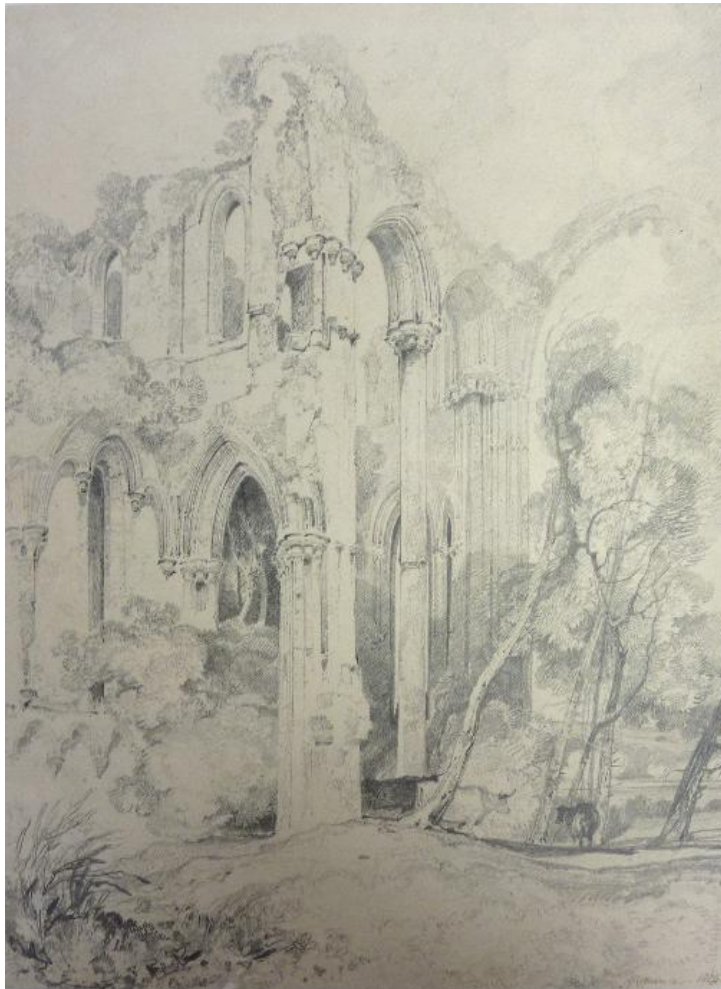


Figure 89. *Fountains Abbey*, c.1804, pencil on paper, 36.2 x 26.7 cm, Norwich Castle Museum & Art Gallery, Norwich



Figure 90. *Yarmouth Beach with Figures*, Exh. NSA? 1808, oil on canvas, 62.2 x 74.9 cm, Private Collection, UK

Figure 91. *Boy at Marbles*, Exh. NSA 1808, oil on canvas, 76.2 x 63.5 cm, Norwich Castle Museum & Art Gallery, Norwich



Figure 92. *Beggar Boy*, Exh. NSA 1808, oil on millboard, 72.7 x 61.5 cm, Norwich Castle Museum & Art Gallery, Norwich



Figure 93. *Portrait of a boy as Yung Norval* or '*Portrait – For, I heard of battles, and I long'd to follow / to the field some warlike Lord.*— DOUGLAS', Exh. NSA 1808, oil on canvas laid down on board, 56.5 x 46 cm, Private Collection, UK



Figure 94. John Opie, *Master William Henry West Betty as Young Norval*, Exh. RA 1804, oil on canvas, 198.5 x 149.5 cm, National Portrait Gallery, London



Figure 95. John Opie, *John Vivian of Pencalenick*, oil on canvas, 75 x 62 cm, Royal Institution of Cornwall, Cornwall



Figure 96. John Opie, *The Blind Beggar of Bethnal Green and his Daughter*, oil on canvas, 90 x 70 cm, Ashmolean Museum, Oxford

Figure 97. *Ferry House, Bristol*,
Exh. NSA? 1808,
oil on canvas,
36.20 x 31.10 cm,
National Galleries
Scotland,
Edinburgh



Figure 98. *Ferry House, Bristol*,
Exh. NSA? 1808,
watercolour and pencil on paper,
30.4 x 24.5 cm,
Norwich Castle
Museum & Art
Gallery, Norwich

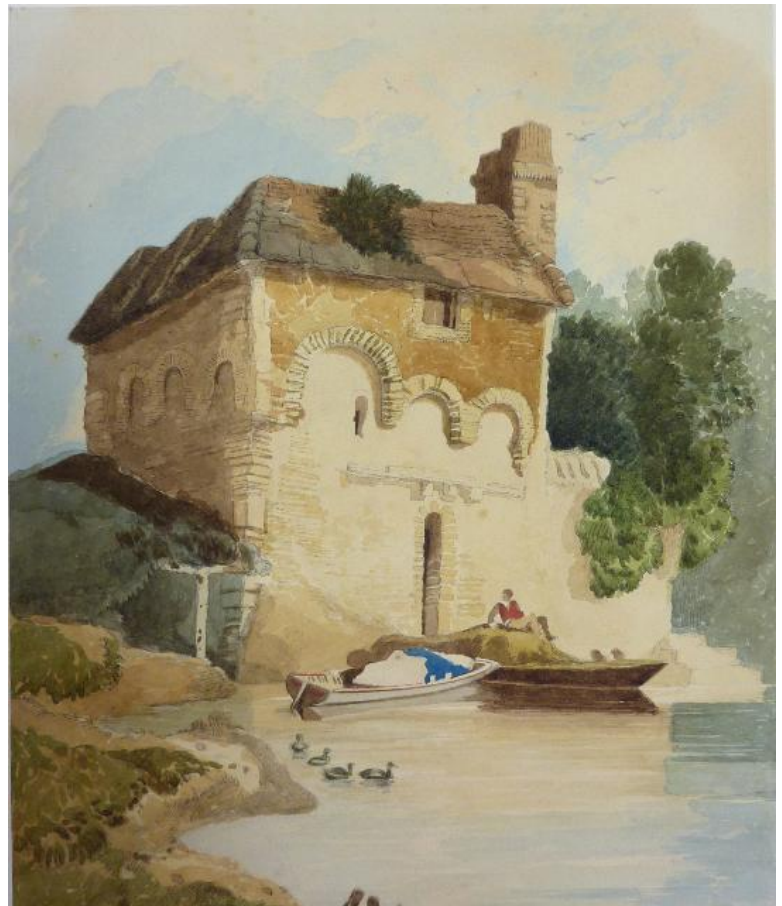




Figure 99. *Fish Swills, Exh. NSA 1809*, watercolour and pencil on paper, 18.3 x 26.5 cm, Norwich Castle Museum & Art Gallery, Norwich

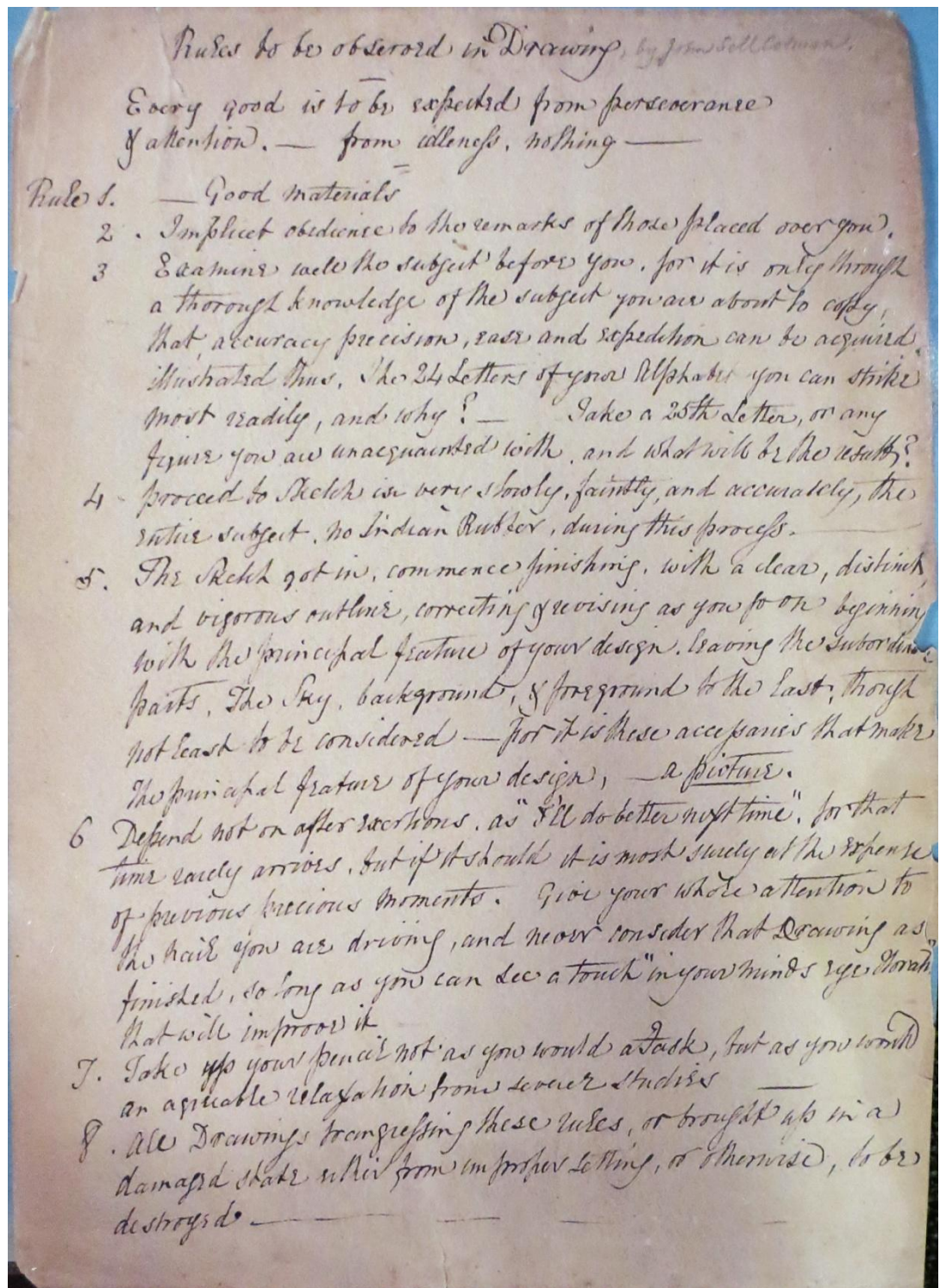


Figure 100. 'Rules to be Observed in Drawing', c.1817, pen on paper, Private Collection, UK



Figure 101. Robert Dixon, *Ferry House, Lower Close, Norwich*, c.1807, pencil and grey wash on paper, 14 x 23.7 cm, British Museum, London



Figure 102. Robert Dixon, *City Wall, Junction of Barrack Street and Silver Road, Norwich*, Exh. NSA 1809, watercolour and pencil on paper, 57.5 x 79.8 cm, Norwich Castle Museum & Art Gallery, Norwich

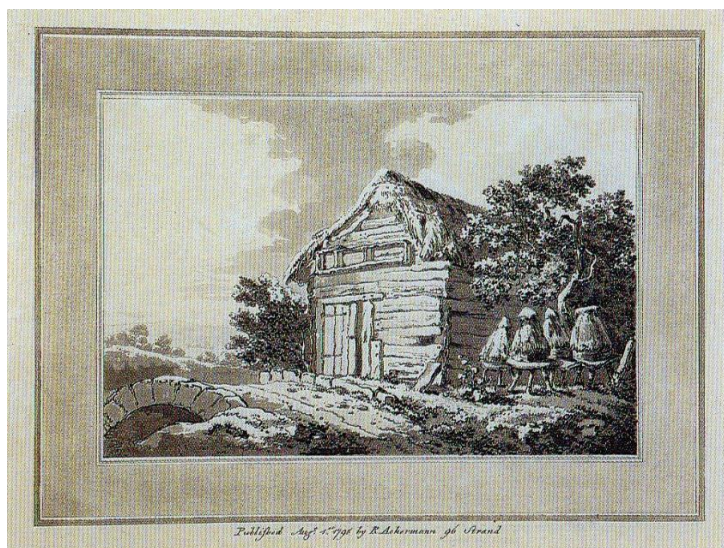


Figure 103. Rudolph Ackermann, Plate three, etching with hand-coloured grey wash, from *Lessons for Beginners in the Fine Arts* (London, 1796), Yale Center for British Art, New Haven

Figure 104. 'Croyland Abbey', plate twenty-two from *Miscellaneous Etchings*, 1811, etching, plate size: 37.8 x 27 cm, paper size: 49.6 x 32.8 cm, Norwich Castle Museum & Art Gallery, Norwich

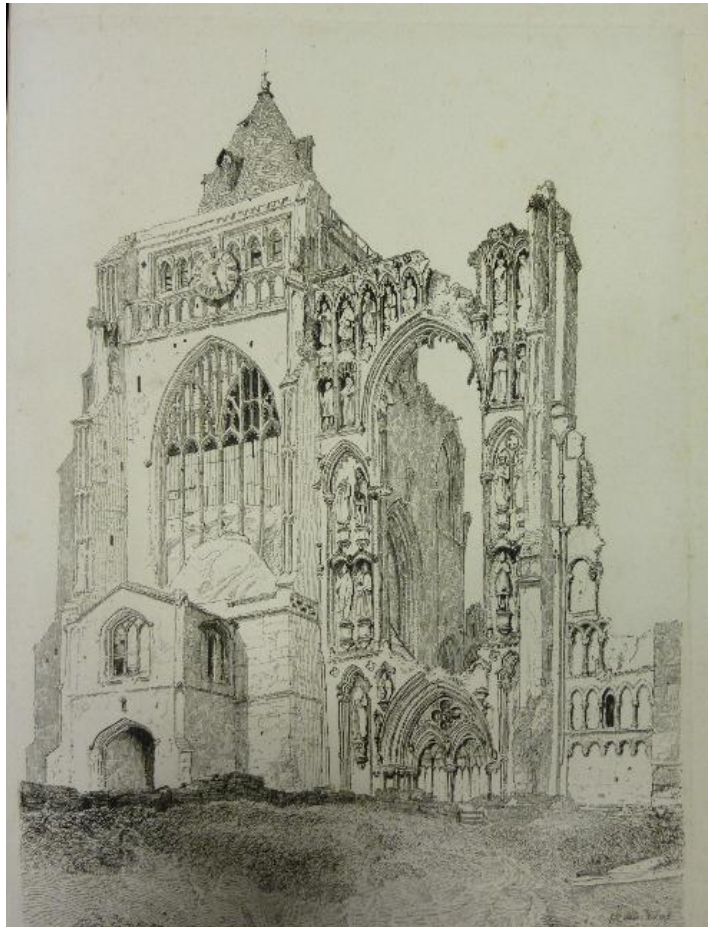


Figure 105. *Croyland Abbey*, Exh. RA 1805 and NSA 1807, watercolour and pencil on paper, 42 x 35.5 cm, Norwich Castle Museum & Art Gallery, Norwich





Figure 106. 'St. Boltoph's Priory', plate twenty-four from *Miscellaneous Etchings*, 1811, etching, plate size: 25.5 x 36.5 cm, paper size: 32 x 49.7 cm, Norwich Castle Museum & Art Gallery, Norwich



Figure 107. *St. Boltoph's Priory*, 1804, Exh. NSA 1807, 35.7 x 52.1 cm, watercolour and pencil on paper, Norwich Castle Museum & Art Gallery, Norwich

Figure 108. 'Byland Abbey',
plate thirteen from
Miscellaneous Etchings,
1811, plate size: 30.3 x 21.2
cm, paper size: 49.6 x 32.8
cm

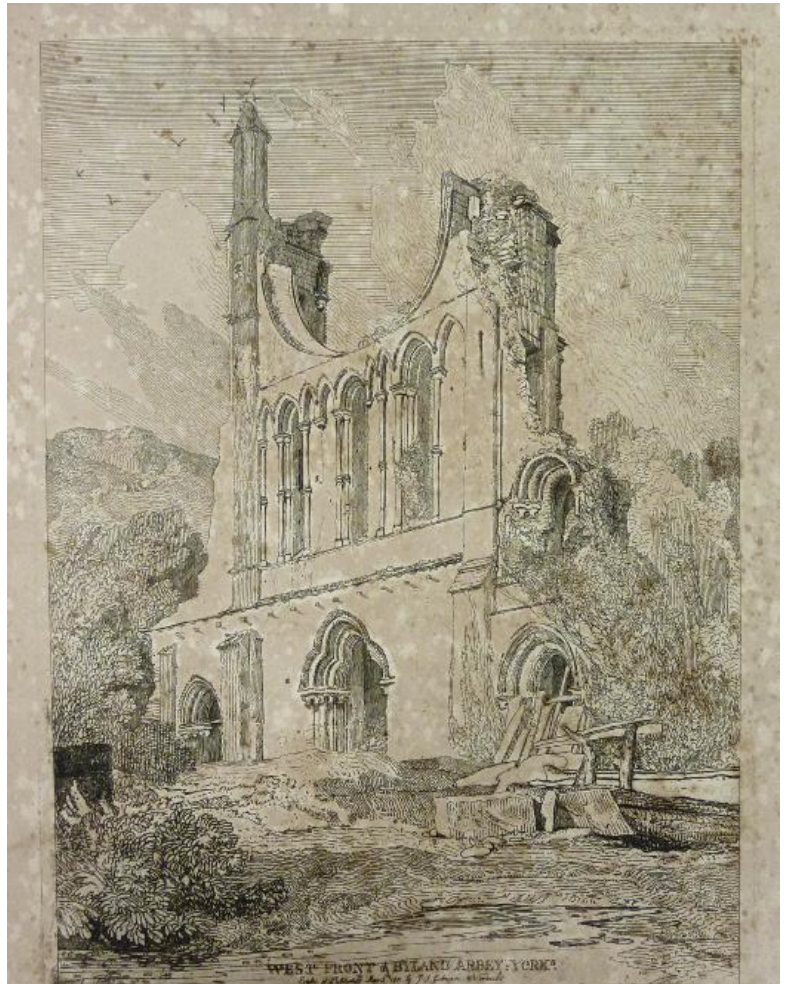


Figure 109. *Byland Abbey*,
1804, Exh. NSA 1808,
watercolour and pencil on
paper, 34.8 x 27 cm,
Norwich Castle Museum &
Art Gallery



Figure 110. *Byland Abbey*, 1809,
watercolour and pencil
on paper, 52.1 x 43.5
cm, Norwich Castle
Museum & Art Gallery

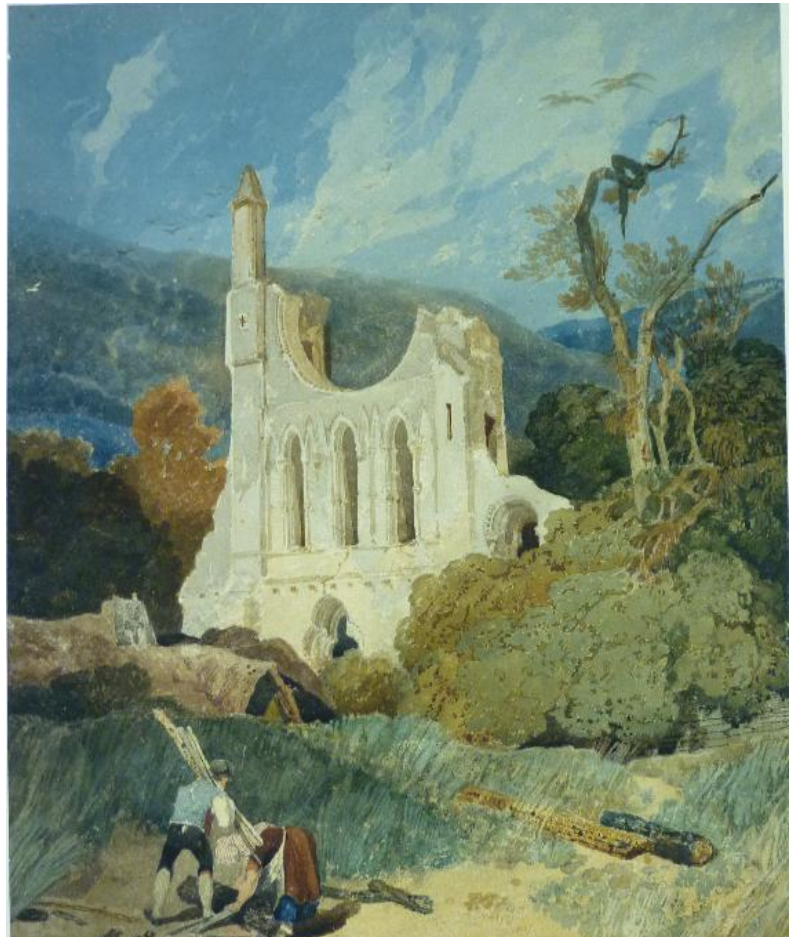
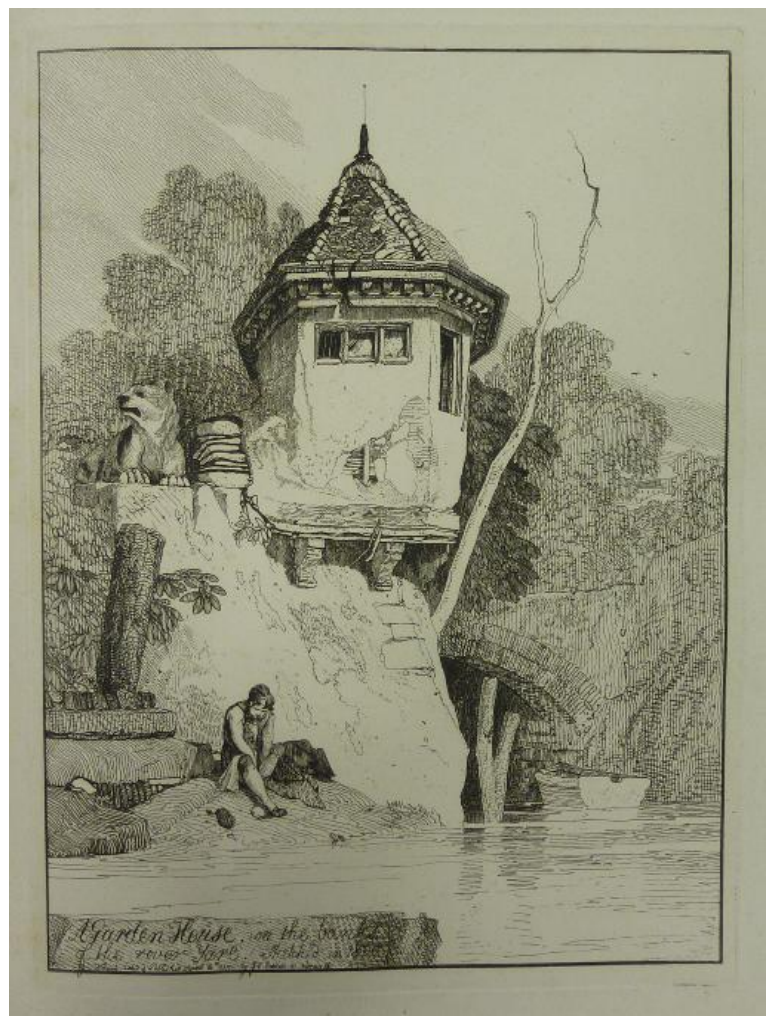


Figure 111. 'A Garden House on the banks of the river Yare', plate fifteen from *Miscellaneous Etchings*, etching, 1811, plate size: 30 x 22 cm, paper size: 49.7 x 33 cm, Norwich Castle Museum & Art Gallery, Norwich



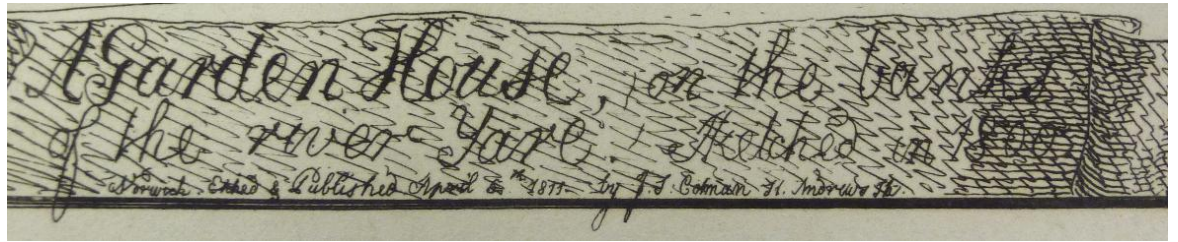


Figure 112. Detail of 'A Garden House on the banks of the river Yare'

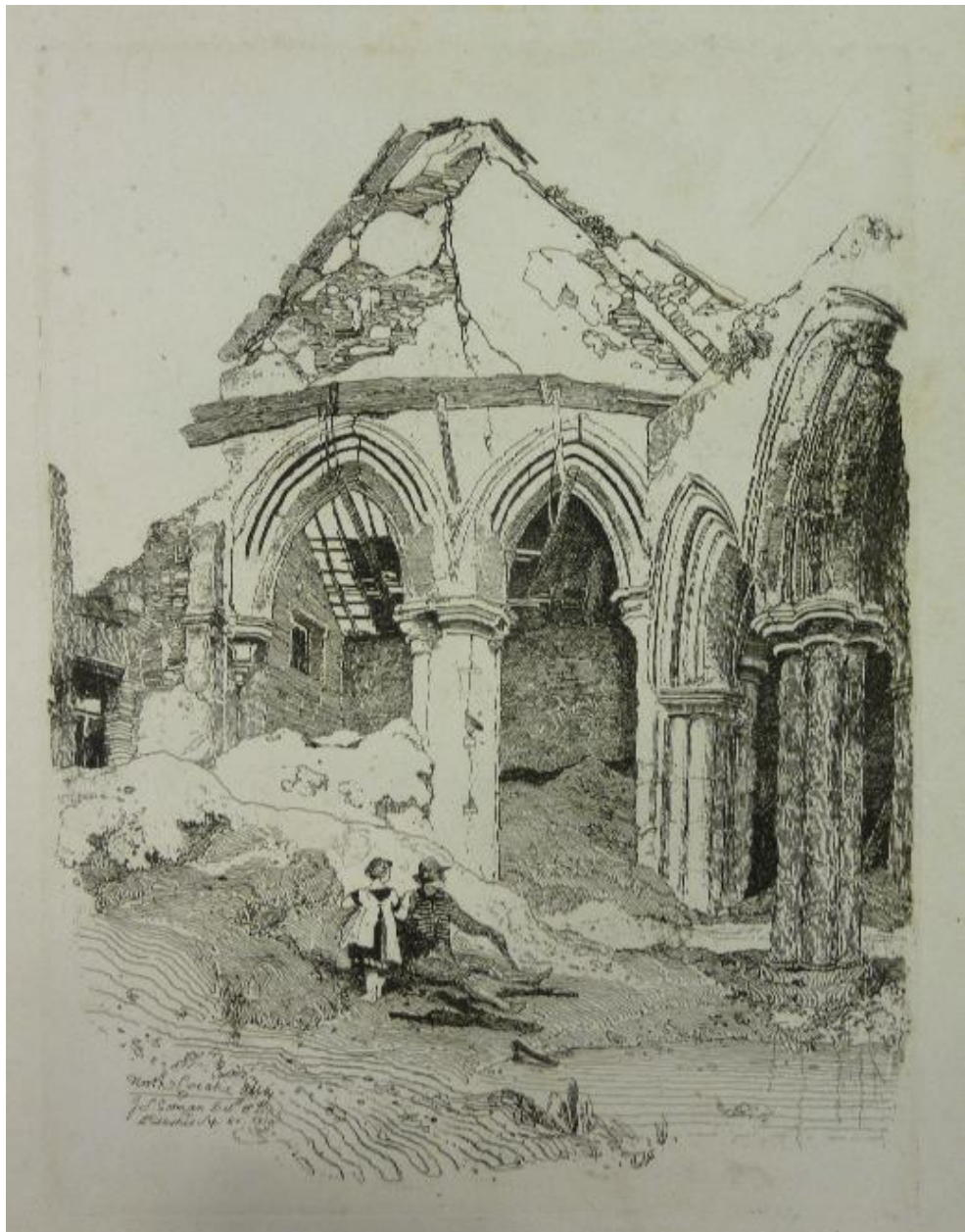


Figure 113. 'North Creake Abbey', plate seven of *Micellaneous Etchings*, 1811, etching, plate size: 30 x 22.4 cm, paper size: 49.5 x 32.9 cm, Norwich Castle Museum & Art Gallery, Norwich



Figure 114. One of the Turner daughters, *North Creake Abbey*, 1811, pencil on paper, 28.5 x 22.9 cm, Ashmolean Museum, Oxford



Figure 115. 'Duncombe Park, Yorkshire', plate three from *Miscellaneous Etchings*, 1810, plate size: 21.1 x 14.2 cm, paper size: 49.7 x 32.8 cm



Figure 116. *Duncombe Park, Yorkshire*, 1810, pencil on paper, 22.2 x 14.6 cm, Norwich Castle Museum & Art Gallery, Norwich



Figure 117. *Byland Abbey*, 1810, pencil on paper, 32.6 x 22 cm, Courtauld Institute of Art, London

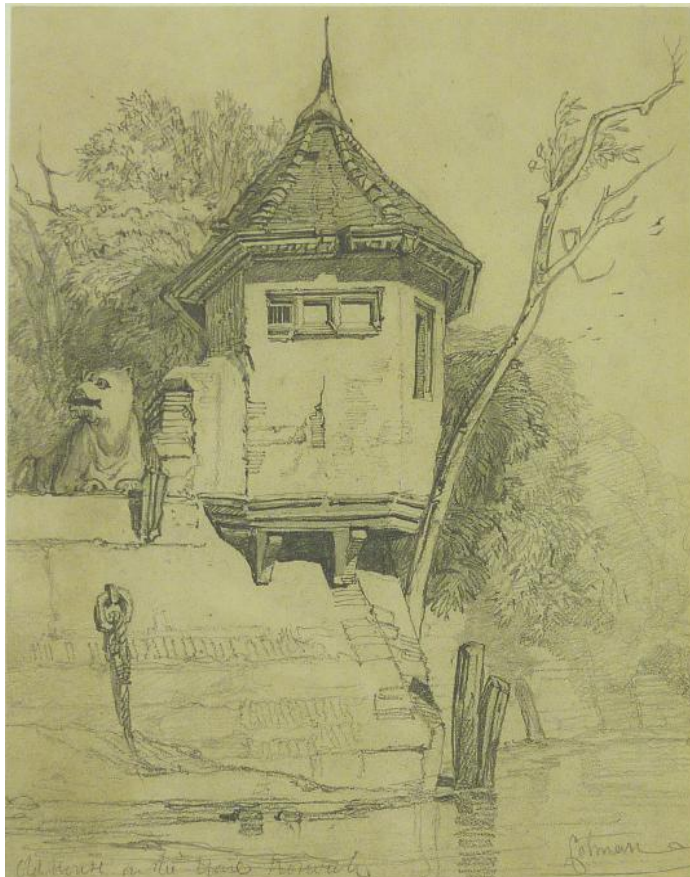


Figure 118. *Garden House on the Yare, Norwich*, c.1811, pencil on paper, 23.9 x 18.5 cm, Norwich Castle Museum & Art Gallery, Norwich

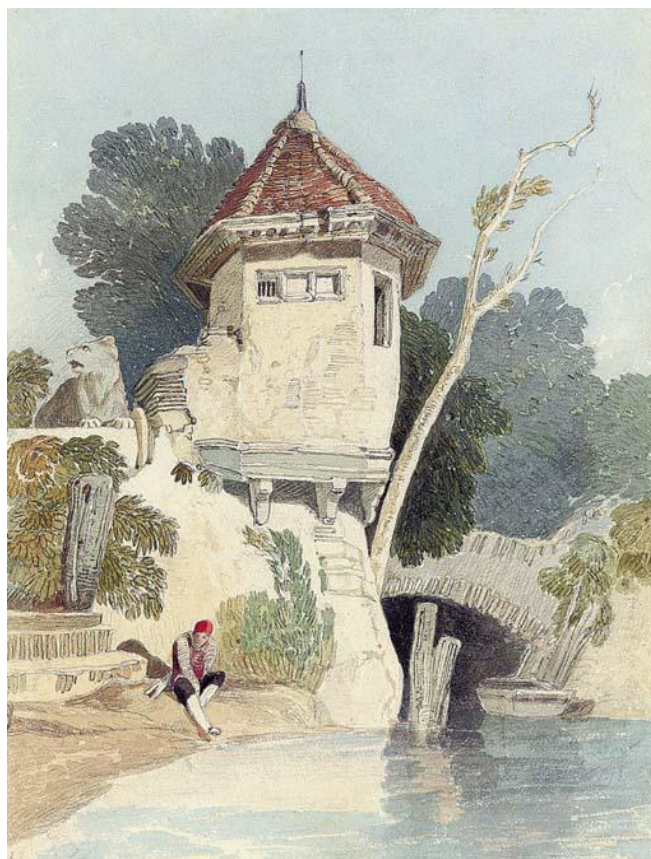


Figure 119. *A Garden House on the banks of the river Yare*, c.1811, watercolour and pencil on paper, 30.2 x 22.5 cm, Private Collection, UK

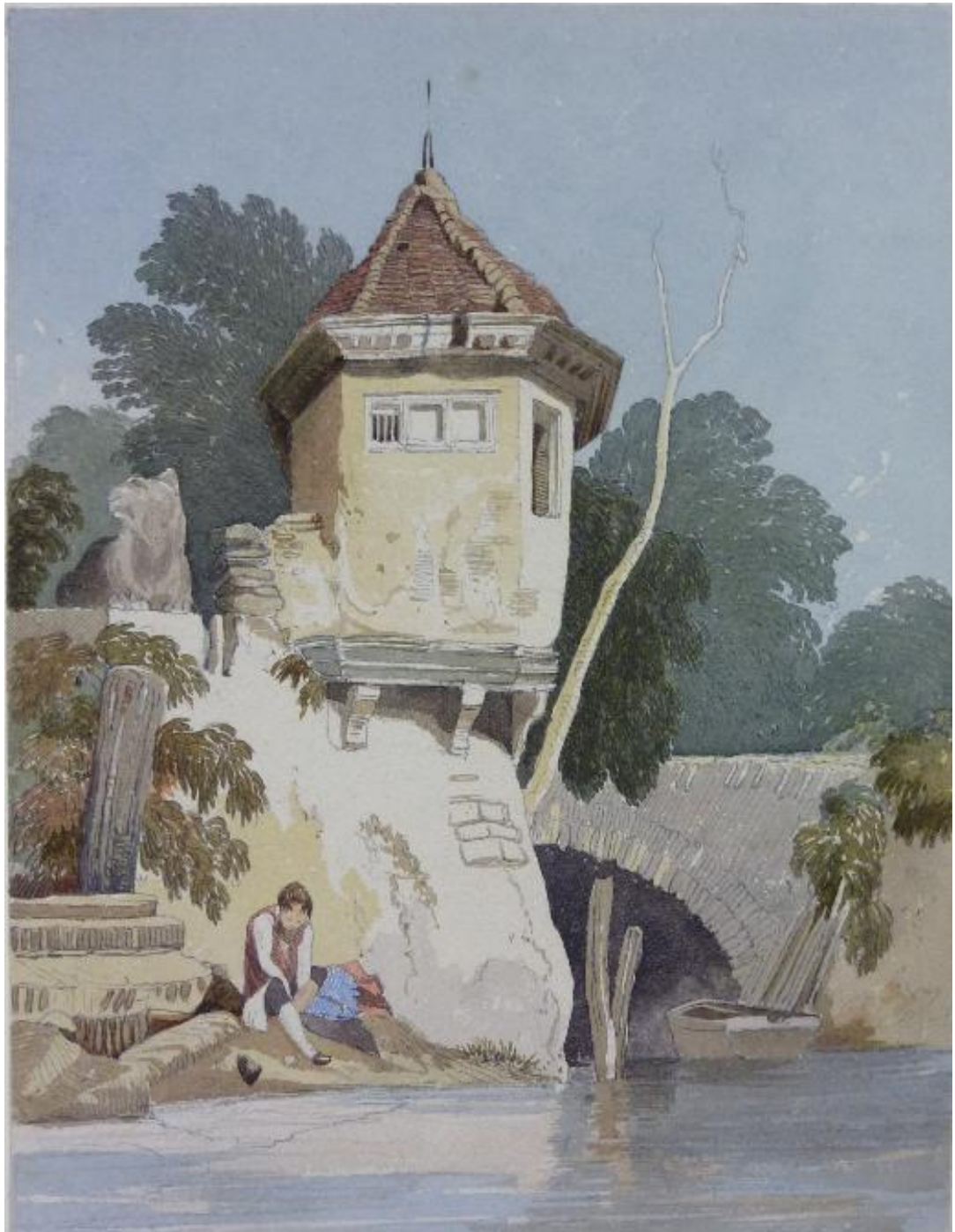


Figure 120. Attributed to James Stark, *A Garden House on the banks of the river Yare*, c.1811, watercolour and pencil on paper, 29.9 x 22.7 cm, Norwich Castle Museum & Art Gallery, Norwich

Figure 121. 'The East End of Howden Church', plate twenty-three from *Miscellaneous Etchings*, 1811, etching plate size: 38 x 27.4 cm, paper size: 49.6 x 32 cm, Norwich Castle Museum & Art Gallery, Norwich

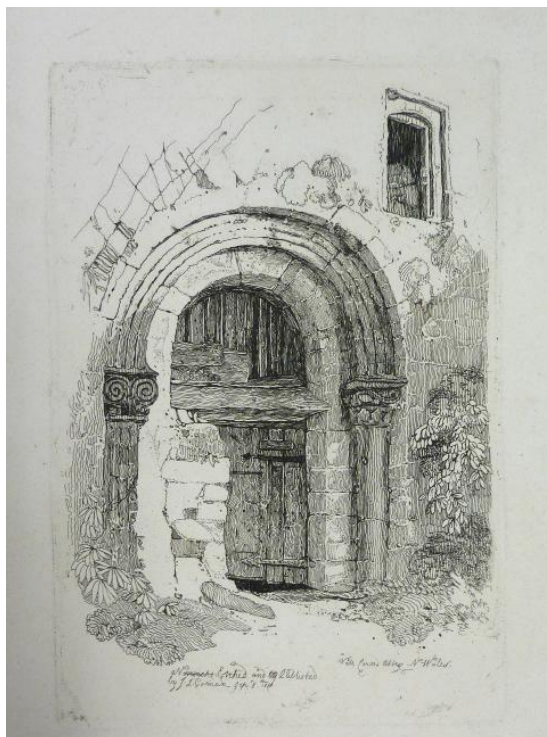
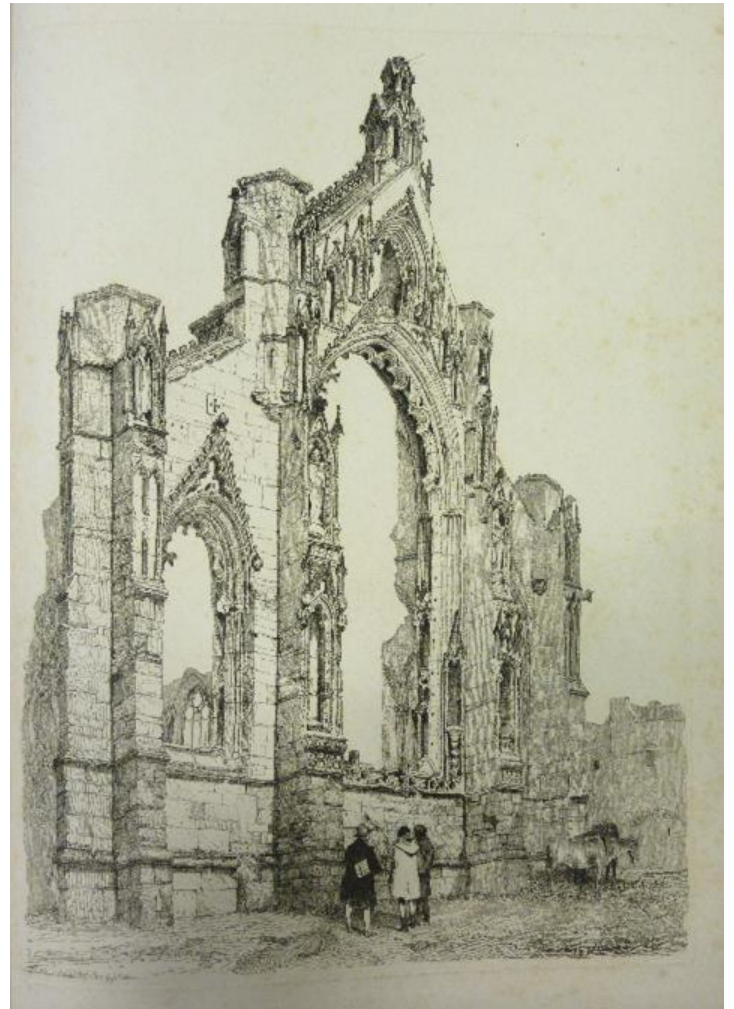


Figure 122. 'A Doorway at Valle Crucis Abbey, North Wales', plate four from *Miscellaneous Etchings*, 1810, etching, plate size: 21.4 x 14.2 cm, paper size: 49 x 33 cm, Norwich Castle Museum & Art Gallery, Norwich

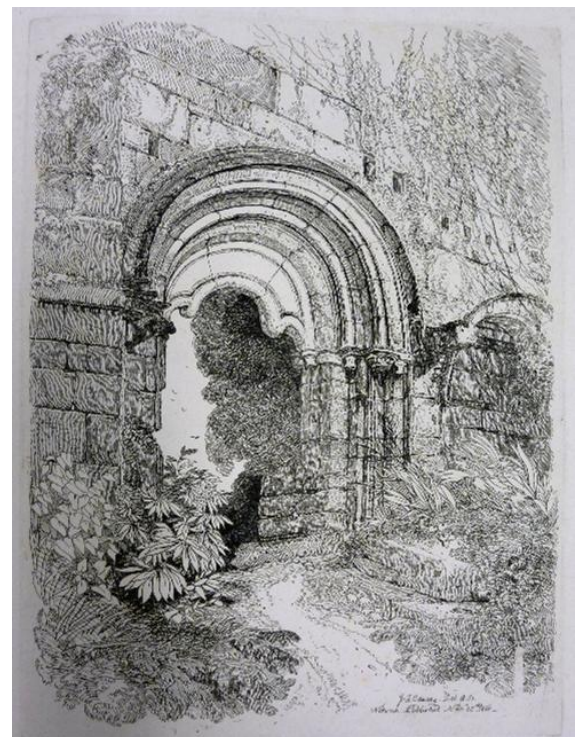


Figure 123. 'A Doorway Leading to the Refectory of Rievaulx Abbey', plate ten from *Miscellaneous Etchings*, 1810, etching, plate size: 30.1 x 22 cm, paper size: 49.5 x 32.1 cm, Norwich Castle Museum & Art Gallery, Norwich

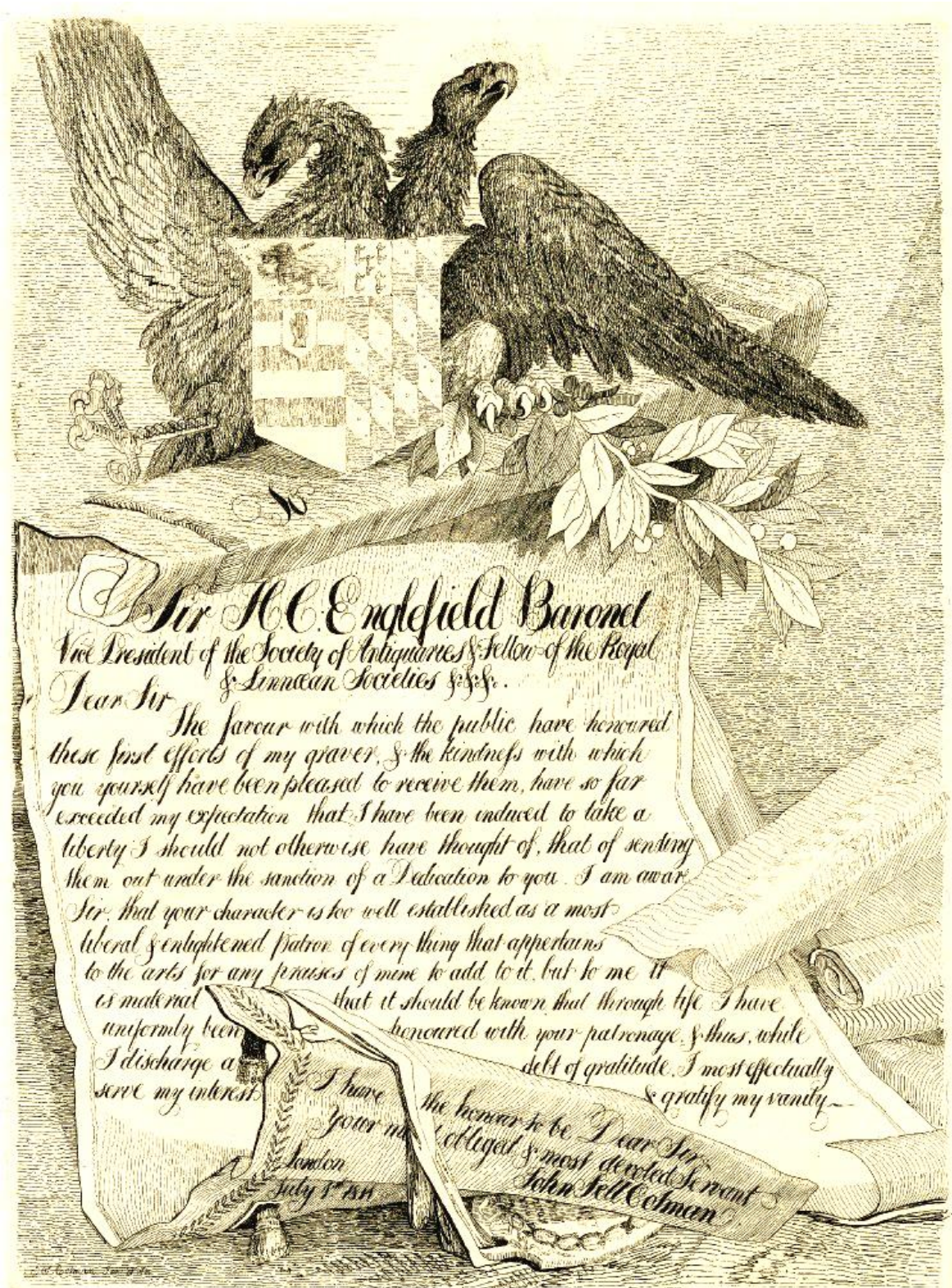


Figure 124. 'Dedication', plate two from *Miscellaneous Etchings*, dated 1 July 1811, 30.2 x 22 cm, etching paper size: 49.8 x 32 cm, Norwich Castle Museum & Art Gallery, Norwich

Chapter 4

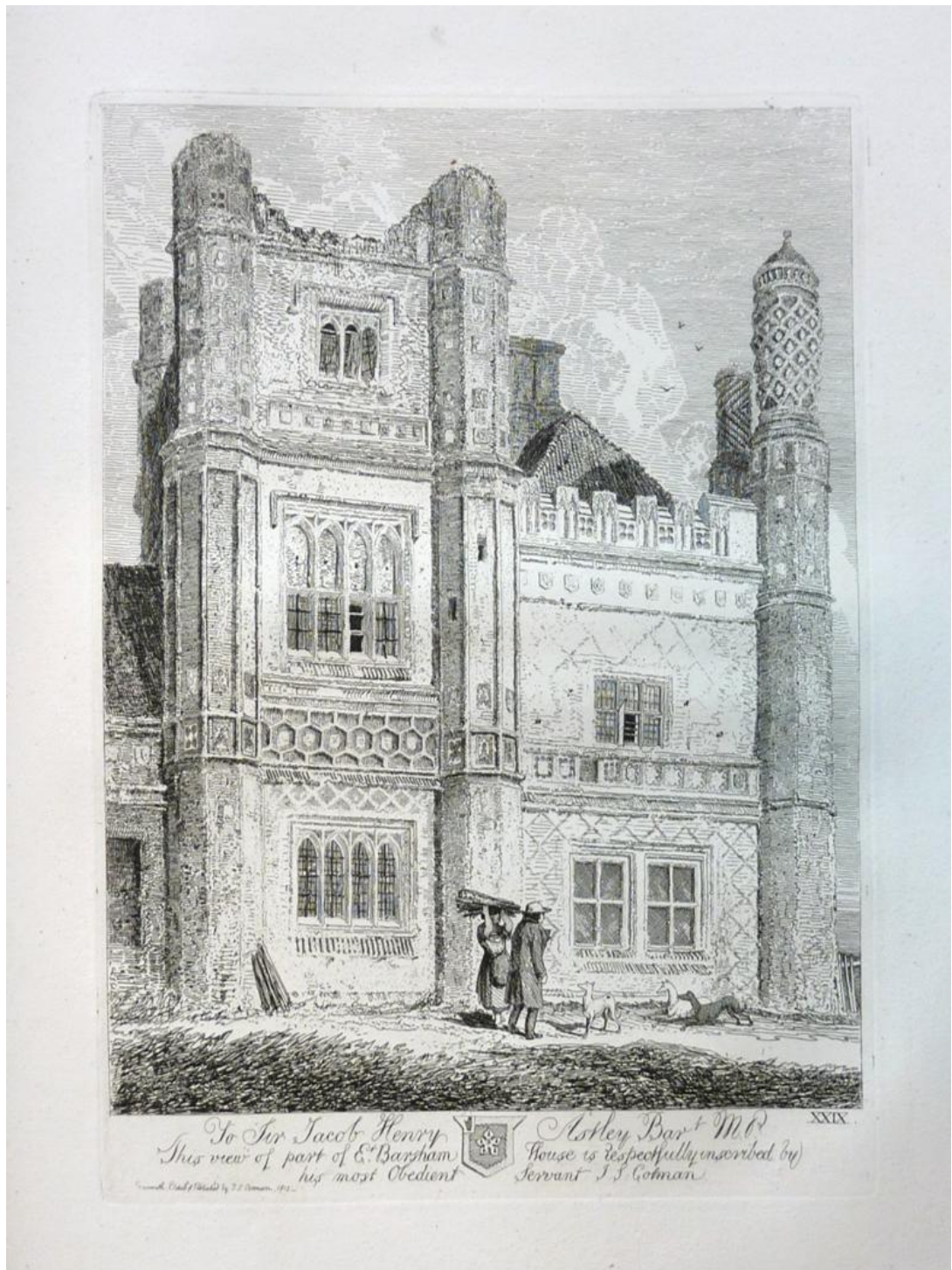


Figure 125. 'West End of East Barsham House', plate twenty-nine of *Architectural Antiquities of Norfolk*, 1813, etching, plate size: 22.5 x 30 cm, paper size: 48.2 x 34.5 cm, Norwich Castle Museum & Art Gallery, Norwich



Figure 126. 'South Front of East Barsham House', plate sixty of *Architectural Antiquities of Norfolk*, 1 vol. (1818), 1817, etching, plate size: 29 x 22.5 cm, paper size: 48.2 x 34.5 cm, Norwich Castle Museum & Art Gallery, Norwich

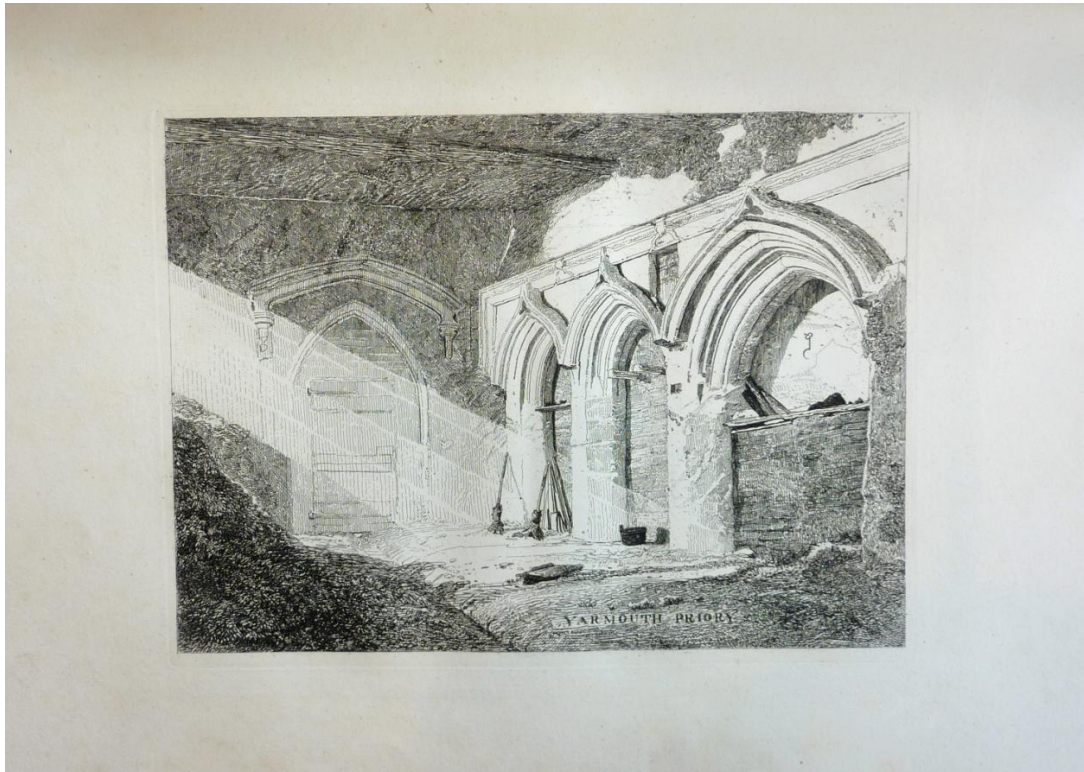


Figure 127. 'Yarmouth Priory', plate four of *Architectural Antiquities of Norfolk*, 1 vol. (1818), 1812, etching, plate size: 22.5 x 30 cm, paper size: 34.5 x 48.2 cm, Norwich Castle Museum & Art Gallery, Norwich

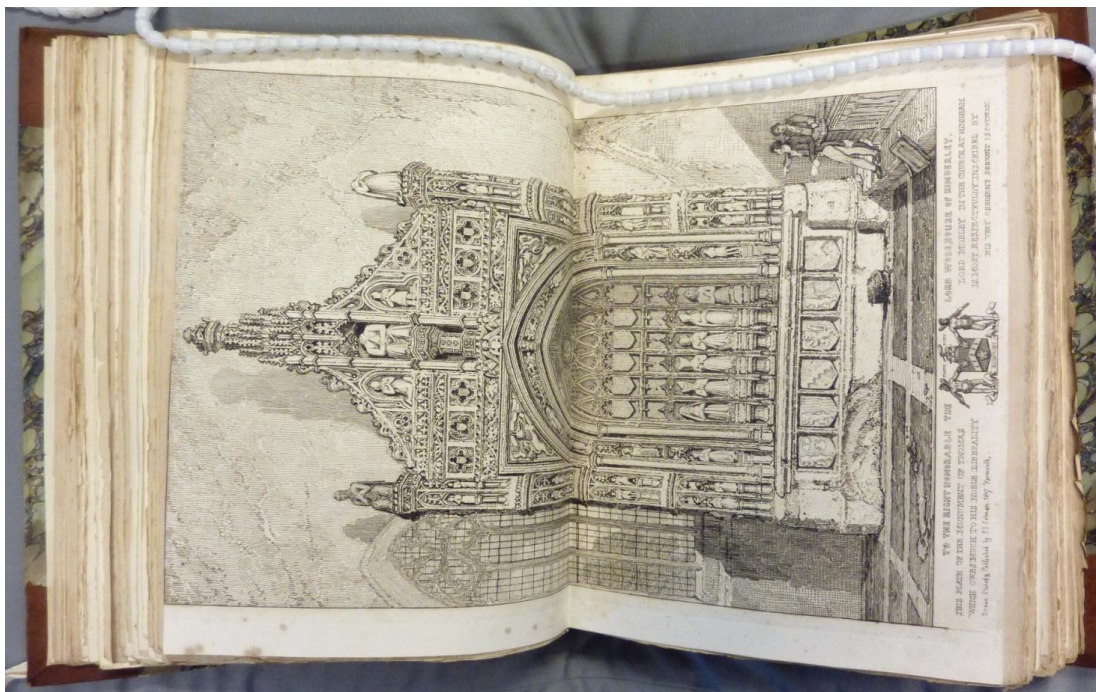


Figure 128. 'The Monument of Thomas Lord Morley in the Church at Higham', 1817, etching, plate fifty-eight of the *Architectural Antiquities of Norfolk* bound in Strickland Charles Edward Neville Rolfe's extra-illustrated copy of Frances Blomefield, *An Essay Towards a Topographical History of the County of Norfolk.*, 11 vols, expanded by Rolfe into thirty-seven vols (London, 1805-10), vol. 2, part. 3, Norfolk Heritage Centre, Norwich



Figure. 129. James Basire the younger after James Adey Repton, 'View of Wolterton Manor House, at East Barsham, Norfolk, taken from the high Road', published in *Vetusta Monumenta*, vol. 4, 1811, engraving, 34.6 x 50.7 cm, Christchurch Art Gallery, New Zealand



Figure 130. James Basire the younger after James Adey Repton, 'View of Wolterton Manor House, at East Barsham, Norfolk, taken from a Spot near the Abbey Barn', published in *Vetusta Monumenta*, vol. 4, 1811, etching, 33.8 x 50.3 cm, Christchurch Art Gallery, New Zealand

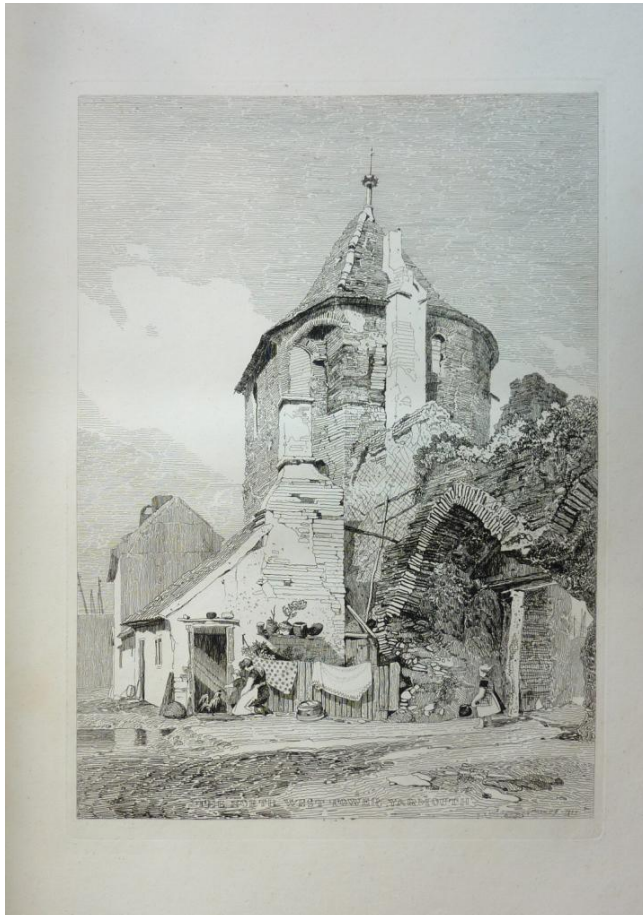


Figure 131. 'The North-West Tower, Yarmouth', plate three of *Architectural Antiquities of Norfolk*, 1 vol. (1818), 1812, etching, plate size: 36.2 x 27 cm, paper size: 48.2 x 34.5 cm, Norwich Castle Museum & Art Gallery, Norwich

Figure 132. Detail of 'The North-West Tower, Yarmouth'



Figure 133. 'The Late Vicarage House, Methwold', plate eight of *Architectural Antiquities of Norfolk*, 1 vol. (1818), 1812, etching, plate size: 30.3 x 22.9 cm, paper size: 48.2 x 34.5 cm, Norwich Castle Museum & Art Gallery, Norwich

Figure 134. Detail of 'The Late Vicarage House, Methwold'



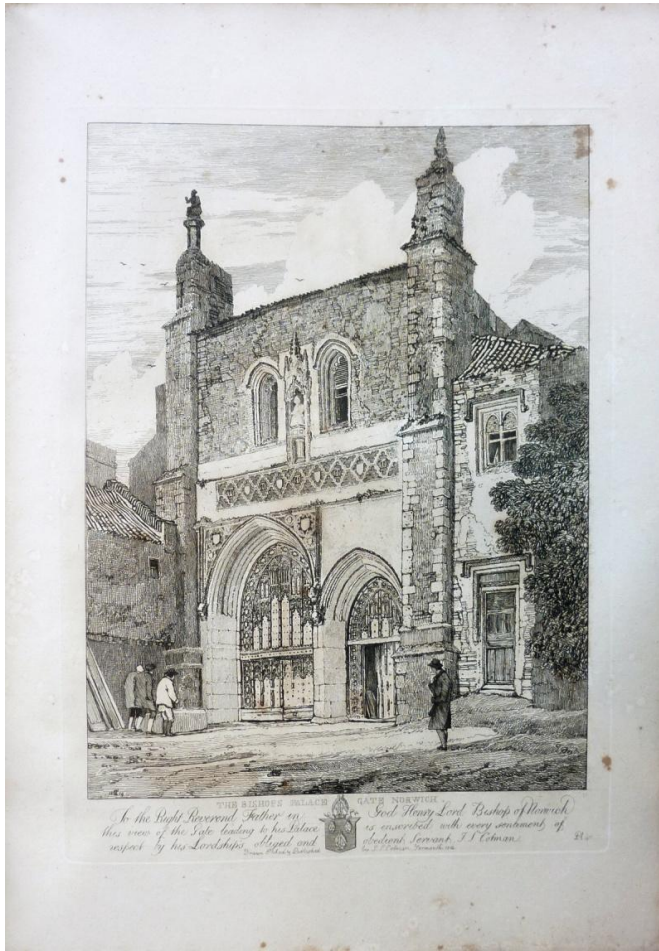


Figure 135. 'The Bishop's Palace Gate, Norwich', plate forty of *Architectural Antiquities of Norfolk*, 1 vol. (1818), 1814, etching, plate size: 37.5 x 27.4 cm, paper size: 48.2 x 34.5 cm, Norwich Castle Museum & Art Gallery, Norwich

Figure 136. Detail of 'The Bishop's Palace Gate, Norwich'

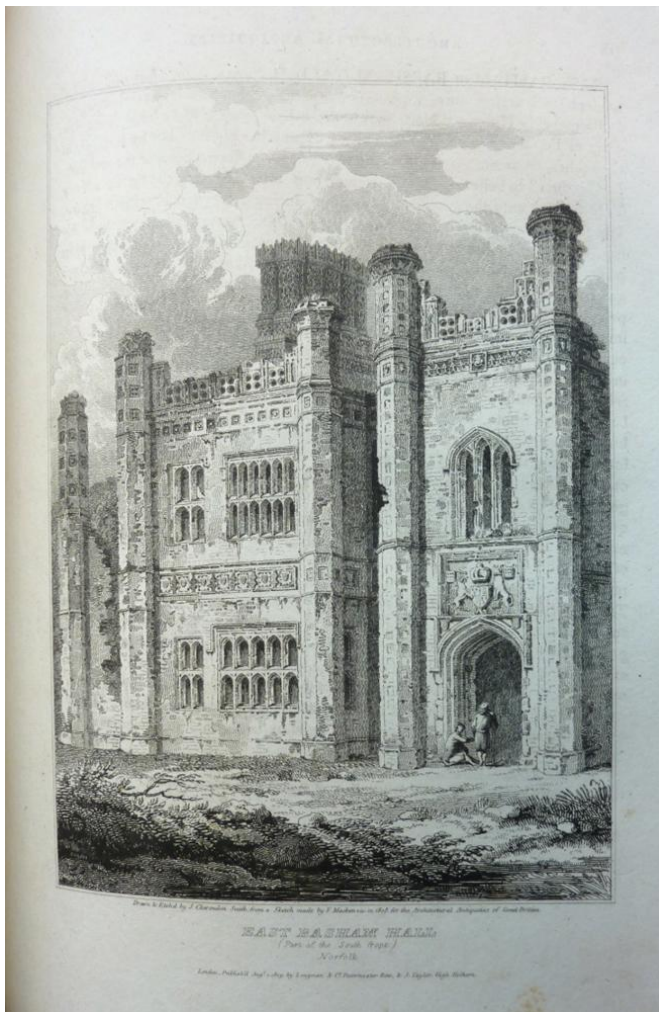


Figure 137. Joseph Clarendon Smith after Frederick Mackenzie, 'East Barsham House, Part of the South Front, Norfolk', published in John Britton, *Architectural Antiquities of Great Britain*, 4 vols (1809), vol. 2, 1808, etching, plate size: 20 x 14.3 cm, paper size: 26.7 x 20.5 cm, Yale Center for British Art, New Haven

Figure 138. Detail of Smith after Mackenzie, 'East Barsham House, Part of the South Front, Norfolk'





Figure 139. 'The Monument of Thomas Lord Morley in the Church at Higham', plate fifty-eight of *Architectural Antiquities of Norfolk*, 1 vol. (1818), 1817, etching, plate size: 42.1 x 26.7cm, paper size: 48.2 x 34.5 cm, Norwich Castle Museum & Art Gallery, Norwich

Figure 140. Detail of 'The Monument of Thomas Lord Morley in the Church at Higham'



Figure 141. 'Interior of South Runcton Church', plate nine of *Architectural Antiquities of Norfolk*, 1 vol. (1818), 1812, etching, plate size: 30 x 22.5 cm, paper size: 48.2 x 34.5 cm, Norwich Castle Museum & Art Gallery, Norwich

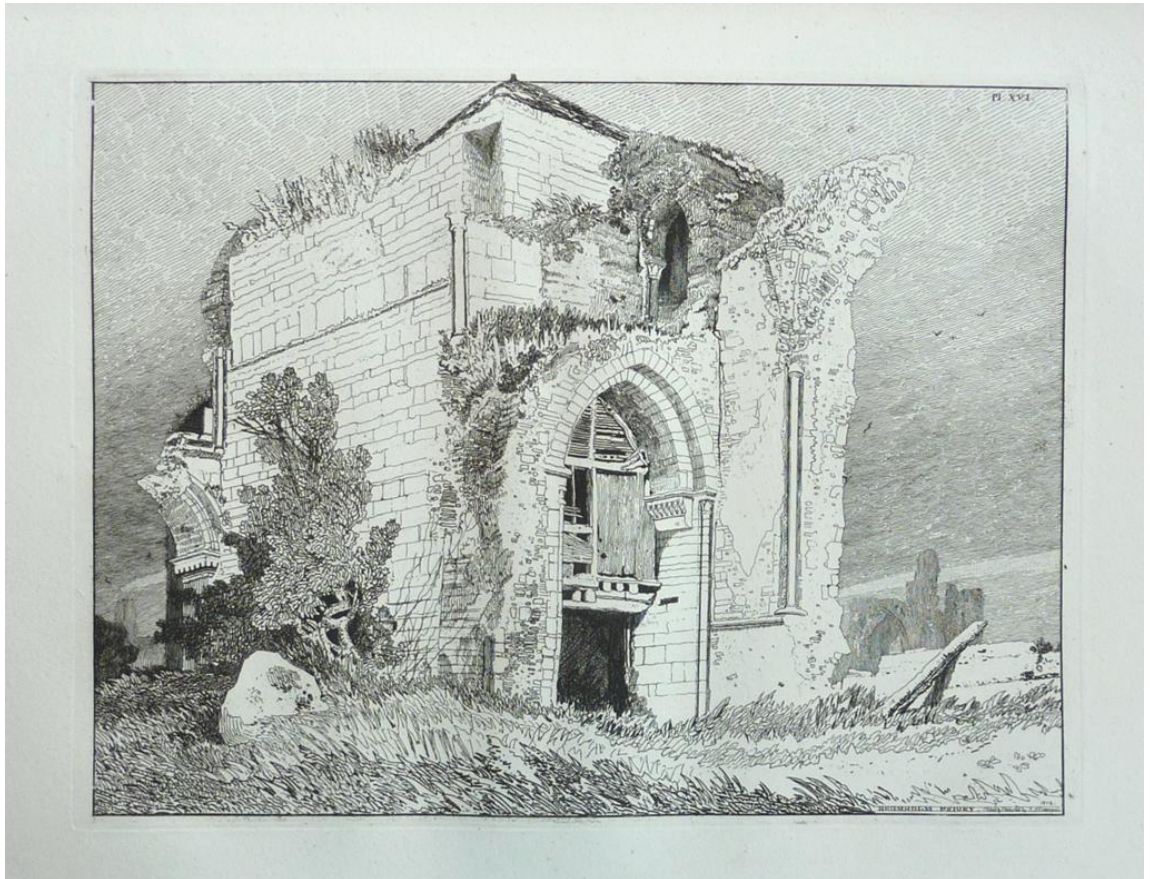


Figure 142. 'Bromholm Priory', plate sixteen of *Architectural Antiquities of Norfolk*, 1812, etching, plate size: 22.5 x 30.1 cm, paper size: 34.5 x 48.2 cm, Norwich Castle Museum & Art Gallery, Norwich



Figure 143. Giovanni Battista Piranesi, *Ruins of the Temples of Jupiter Tonans and Concord*, plate seven in the print series, *Antichità romane de' tempi della Repubblica, e de' primi imperatori*, 1748, etching, plate size: 13.8 x 27.1 cm, Metropolitan Museum of Art, New York

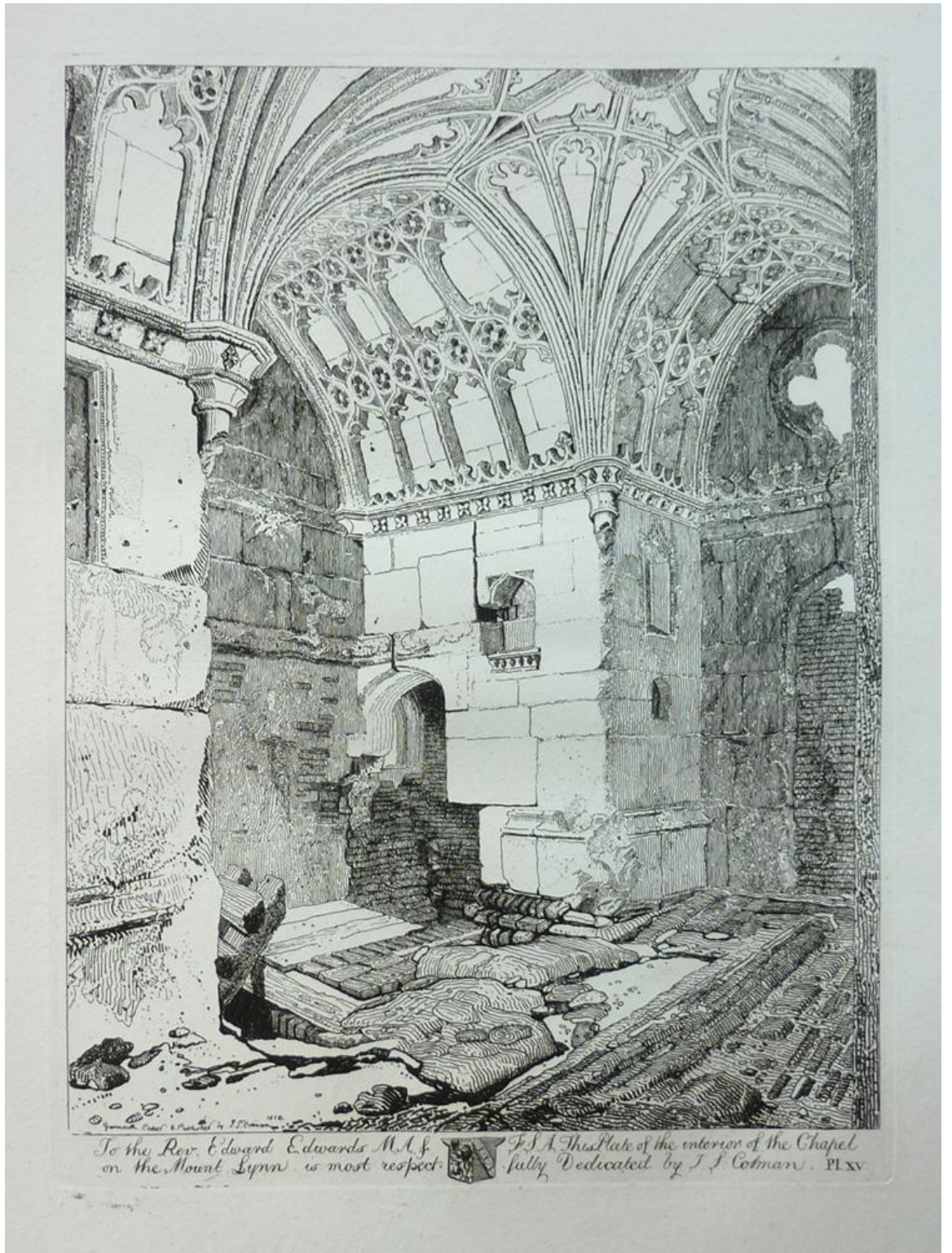


Figure 144. 'Chapel on the Mount, Lynn', plate fifteen of *Architectural Antiquities of Great Britain*, 1812, etching, plate size: 30.2 x 22.4 cm, paper size: 48.2 x 34.5 cm, Norwich Castle Museum & Art Gallery, Norwich

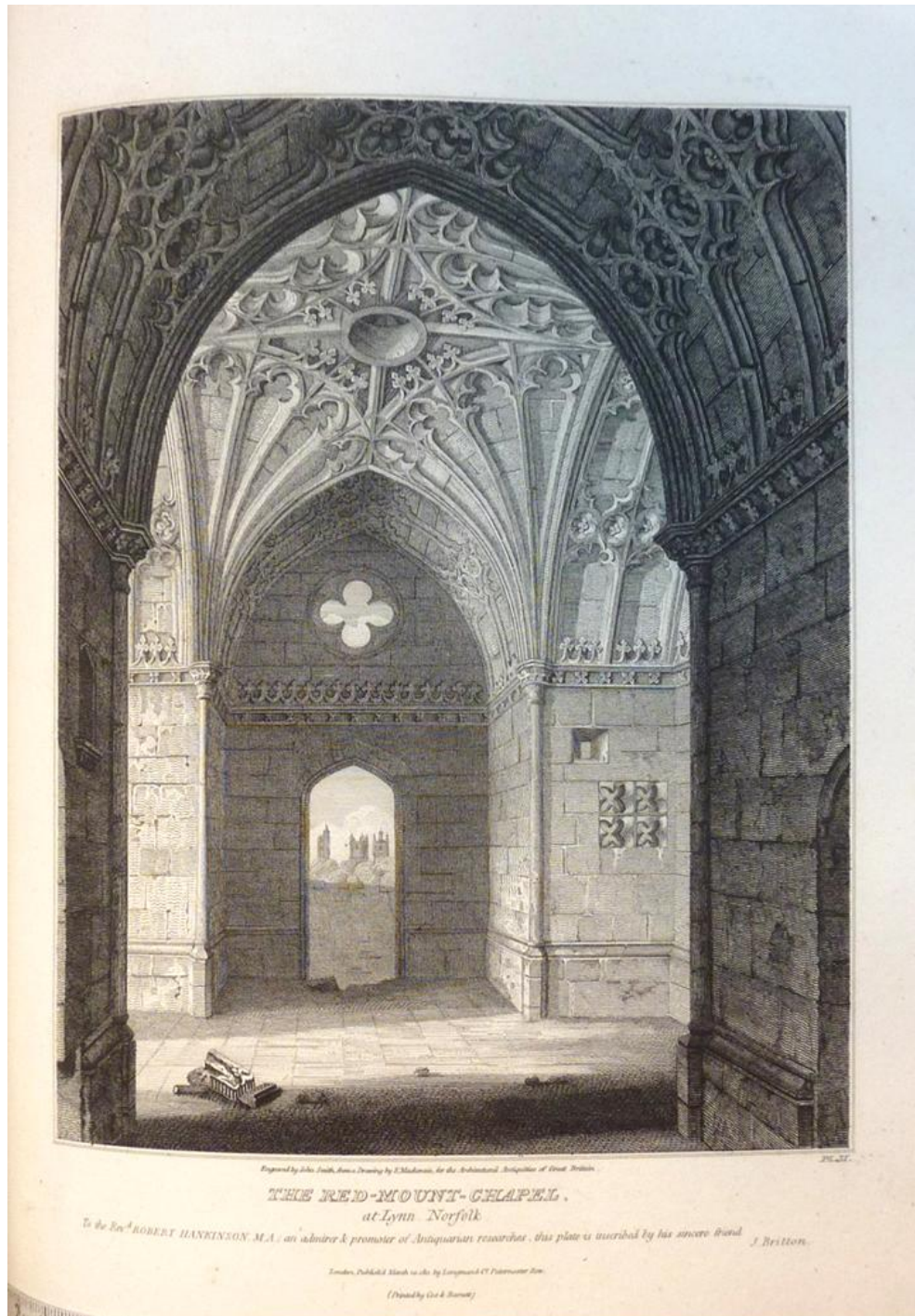


Figure 145. John 'Antiquary' Smith after Frederick Mackenzie, *The Red Mount Chapel, at Lynn, Norfolk*, published in John Britton, *Architectural Antiquities of Great Britain*, 4 vols (1812), vol. 31812, etching, plate size: 20.4 x 15.5 cm, paper size: 26.7 x 20.5 cm, Yale Center for British Art, New Haven



Figure 146. *South Front of East Barsham House*, c.1817, pencil on paper, 33.5 x 22.2 cm, Norwich Castle Museum & Art Gallery, Norwich



Figure 147. *The North-West Tower, Yarmouth*, 1811, pencil on paper, 30.2 x 21.9 cm, Yale Center for British Art, New Haven



Figure 148. 'Abbey Church of St Georges de Bocherville, View from the South East', plate three of *Architectural Antiquities of Normandy*, 2 vols (1822), vol. 1, 1819, etching, plate size: 26.4 x 36.8 cm, paper size: 53.5 x 37 x cm, Norwich Castle Museum & Art Gallery, Norwich

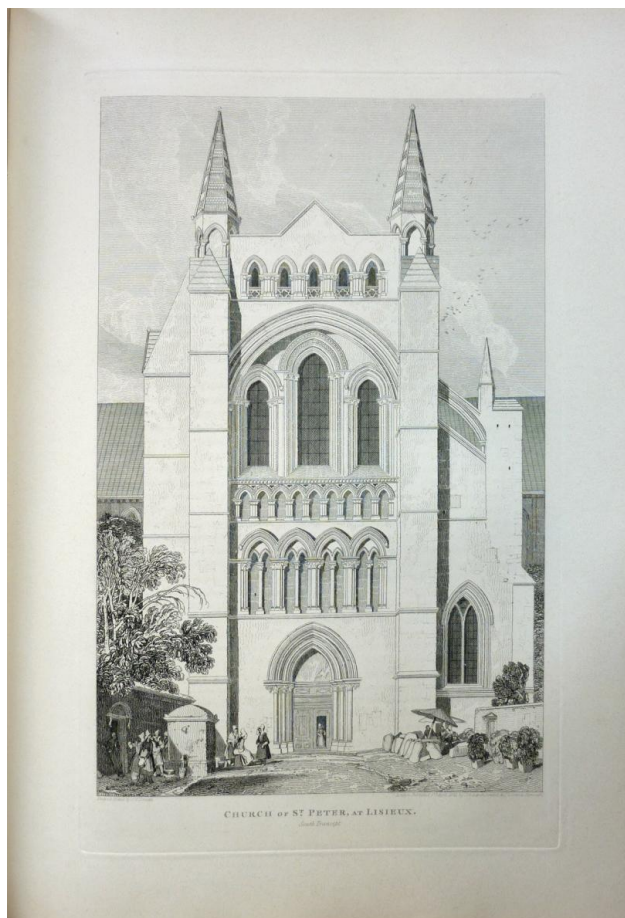


Figure 149. 'Church of St Peter, at Lisieux, South Transept', plate seventy-three of *Architectural Antiquities of Normandy*, 2 vols (1822), vol. 2, 1821, etching, plate size: 39.2 x 24 cm, paper size: 53.5 x 37 cm, Norwich Castle Museum & Art Gallery, Norwich



Figure 150. 'Abbey Church of St. Etienne, Caen. West Front', plates twenty-one and twenty-two of the *Architectural Antiquities of Normandy*, 2 vols (1822), vol.1, 1819, plate size: 50.4 x 34.8 cm, paper size: 37 x 53.5 cm, Norwich Castle Museum & Art Gallery, Norwich

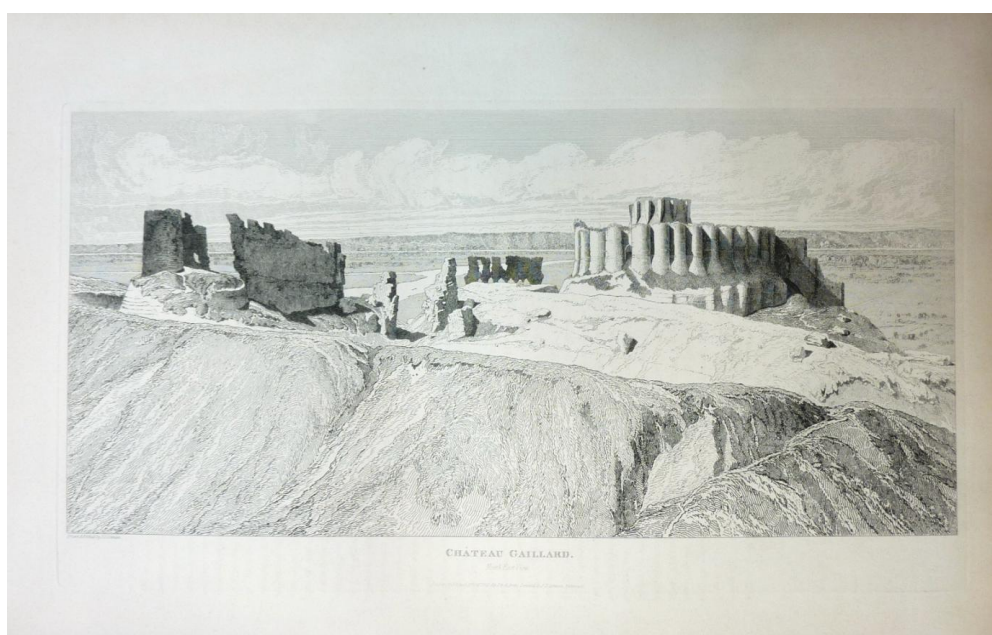


Figure 151. 'Chateau Gaillard, North East View', plate eighty of the *Architectural Antiquities of Normandy*, 2 vols (1822), vol. 2, 1821, etching, plate size: 23 x 41.5 cm, paper size: 37 x 53.5 cm, Norwich Castle Museum & Art Gallery, Norwich



CATHEDRAL CHURCH OF NOTRE-DAME AT ROUEN.
South Transept, from the Place de la Calande.

Figure 152. 'Cathedral Church of Notre-Dame at Rouen, South Transept, from the Place de la Calande', plates forty-nine and fifty of the *Architectural Antiquities of Normandy*, 2 vols (1822), vol. 1, 1819, etching, plate size: 50.5 x 34.5, paper size: 52 x 34.9cm, Norwich Castle Museum & Art Gallery, Norwich

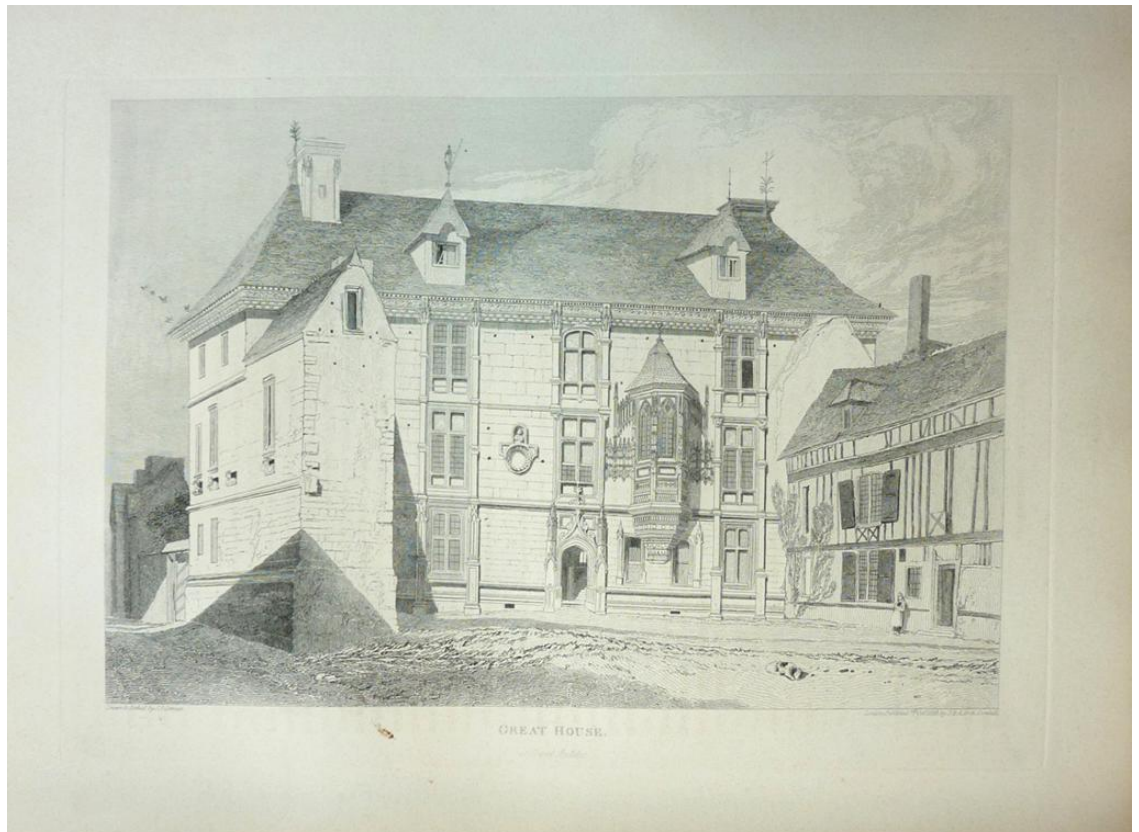


Figure 153. 'Great House At Great Andelys', plate fifteen of the *Architectural Antiquities of Normandy*, 2 vols (1822), vol. 1, 1819, etching, plate size: 24.7 x 37.8 cm, paper size: 37 x 53.5 cm, Norwich Castle Museum & Art Gallery, Norwich

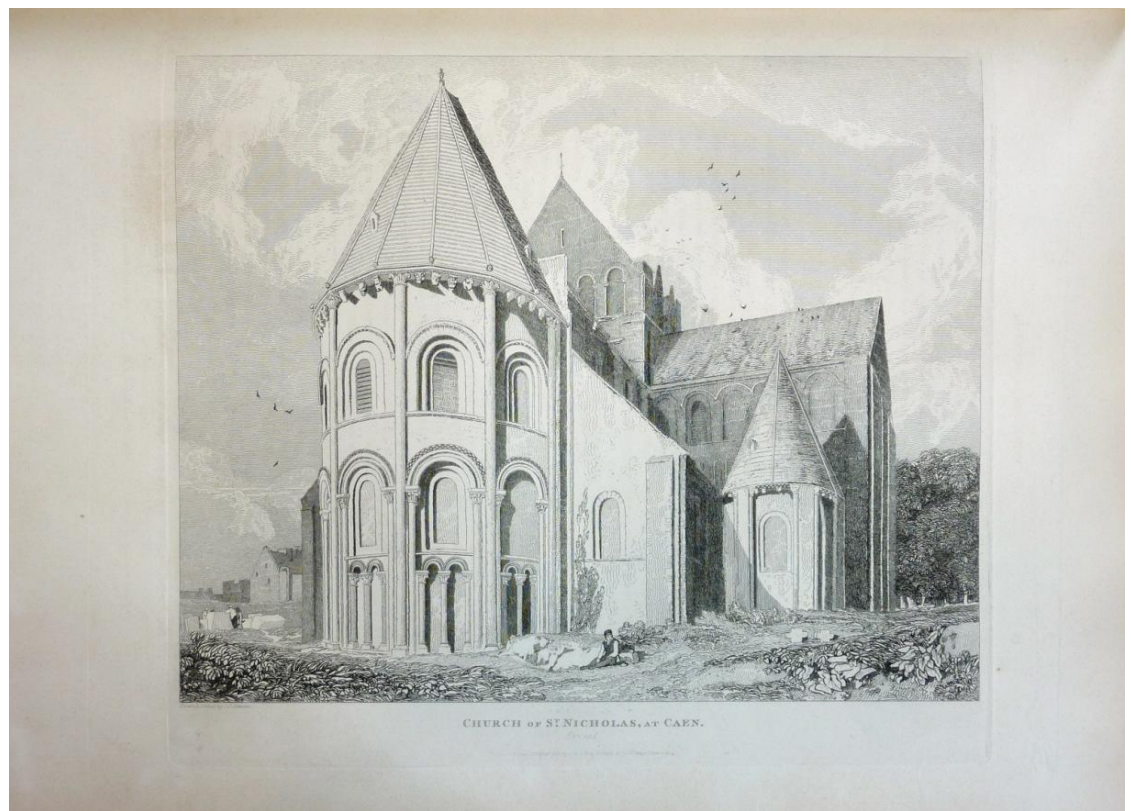


Figure. 154. 'Church of St Nicholas, at Caen: East End', plate fifty-six of the *Architectural Antiquities of Normandy*, 2 vols (1822), vol. 2, 1821, etching, plate size: 33.1 x 29.5 cm, paper size: 37 x 53.5 cm, Norwich Castle Museum & Art Gallery, Norwich

Figure 155. 'Cathedral Church of Notre-Dame at Rouen, South Transept, from the Place de la Calande', 1817, pencil and brown wash on paper, plate size: 47.7 x 33.2 cm, NG Commercial Banking UK

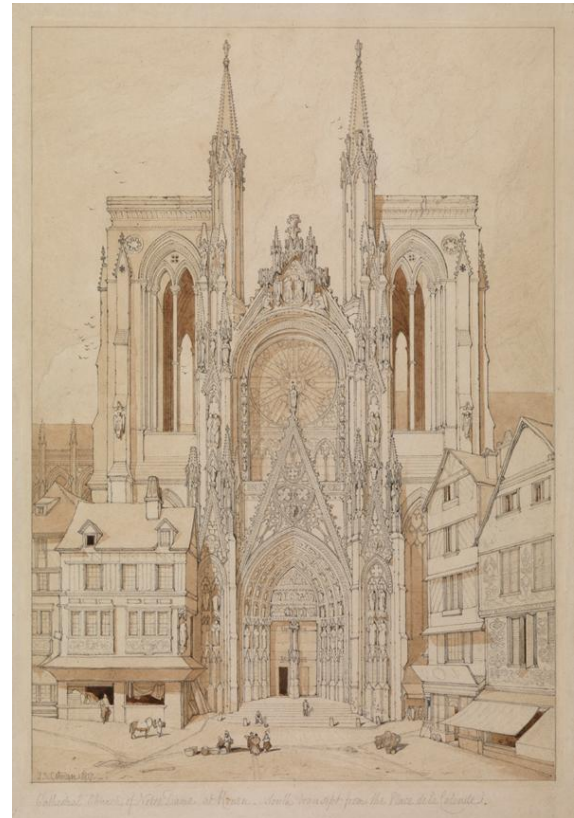


Figure. 156. 'Cathedral Church of Notre-Dame at Rouen, West Front, from the Place Notre-Dame', plates fifty-one and fifty-two of the *Architectural Antiquities of Normandy*, 2 vols (1822), vol. 1, 1821, etching, plate size: 56 x 40.6 cm, paper size: 65.5 x 53.3 cm, Norwich Castle Museum & Art Gallery, Norwich





Figure 157. James Basire the elder after John Carter, *West Front of Lichfield Cathedral*, 1782, engraving and etching, 22.5 x 12.5 cm, British Museum, London

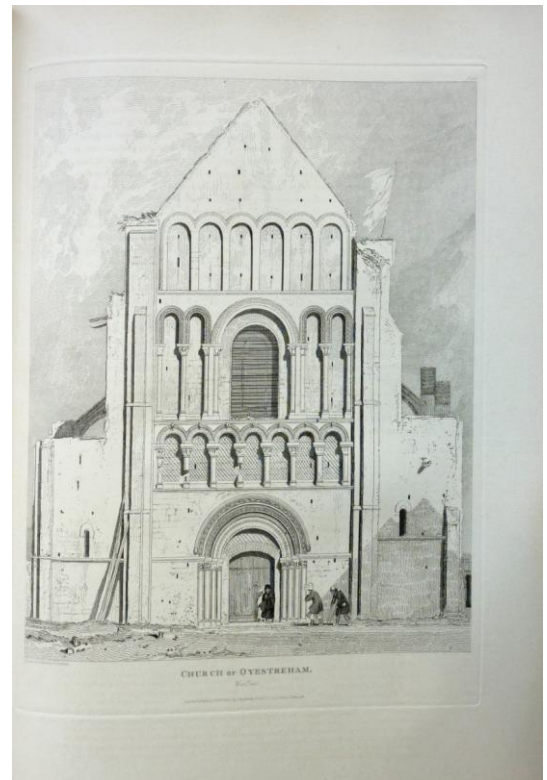


Figure 158. 'Church of Oystreham', plate ninety-eight of the *Architectural Antiquities of Normandy*, 2 vols (1822), vol. 2, 1821, etching, plate size: 34.5 x 26.4 cm, paper size: 53.5 x 37 cm, Norwich Castle Museum & Art Gallery, Norwich



Figure 159. 'The Church of St Ouen, at Rouen, plate seventy-six of the *Architectural Antiquities of Normandy*, 2 vols (1822), vol. 2, 1821, etching, plate size: 27 x 33.8 cm, paper size: 37 x 53.5 cm, Norwich Castle Museum & Art Gallery, Norwich



Figure 160. *Domfront*, 1820, pencil and sepia wash on paper, 24.8 x 45.8 cm, Norwich Castle Museum & Art Gallery, Norwich

Figure 161,
Charles Turner
after J. M. W.
Turner, 'Norham
Castle', 1816,
etching and
mezzotint, 17.8 x
26 cm, plate fifty-
seven from the
Liber Studiorum,
part twelve, Royal
Academy
Archives, London



Figure 162.
Cotman after J. M.
W. Turner,
Norham Castle,
c.1820, pencil on
paper, 9.5 x 13.5
cm, plate fifty-
seven of the *Liber
Studiorum*, 1820,
British Museum,
London



Chapter 5

Figure 163. *Castle Tower with Battlements by Water*, c.1830, pencil on paper, 20 x 17.1 cm, Norwich Castle Museum & Art Gallery, Norwich

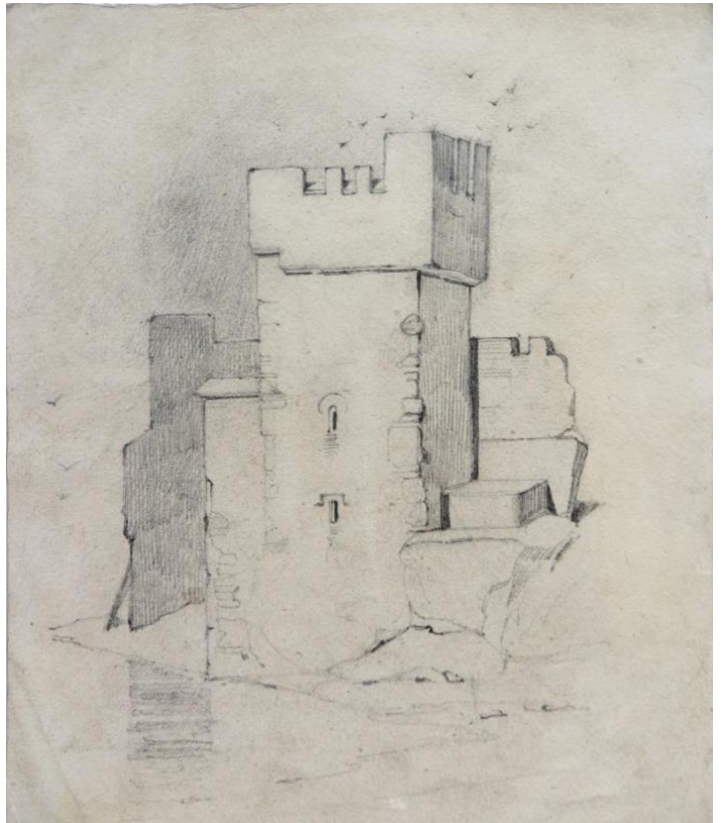


Figure 164. *Conway Castle*, after 1834, pencil on paper, 33.8 x 24.3 cm, Norwich Castle Museum & Art Gallery, Norwich



Figure 165. *Shipping*, pencil on paper, after 1834, 16.5 x 26.7 cm, Norwich Castle Museum & Art Gallery, Norwich



Figure 166. *Guildford, Surrey*, pencil on paper, after 1834, 23.6 x 29.4 cm, Norwich Castle Museum & Art Gallery, Norwich



Figure 167. *Roman Soldier on Rearing Horse*, after 1834, pencil on paper, 16.9 x 21.6 cm, Norwich Castle Museum & Art Gallery



Figure 168. *Soldier with Sword and Shield*, after 1834, pencil on paper, 24.9 x 17.2 cm, Norwich Castle Museum & Art Gallery, Norwich

Figure 169. *Man in armour*, after 1834, pencil on paper, 25.4 x 16 cm, Norwich Castle Museum & Art Gallery, Norwich

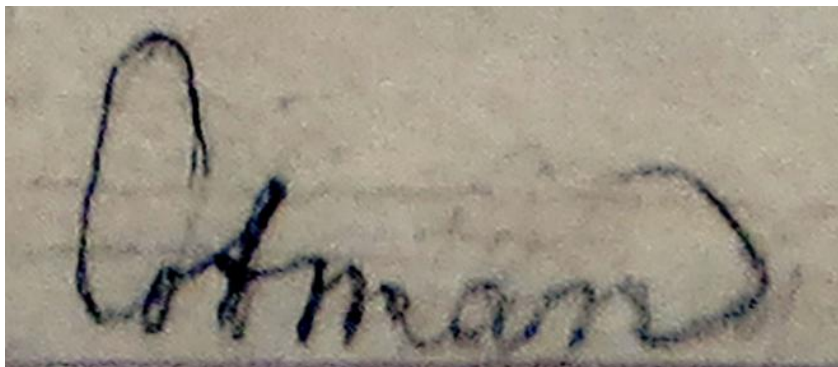


Figure 170. Detail of signature contained in *Roman Soldier on Rearing Horse*

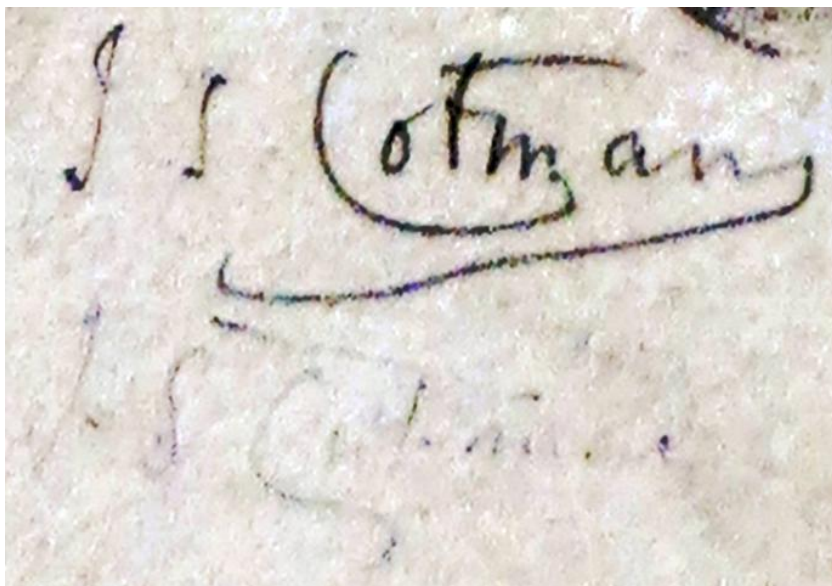


Figure 171. Detail of signature contained in *Man in armour*

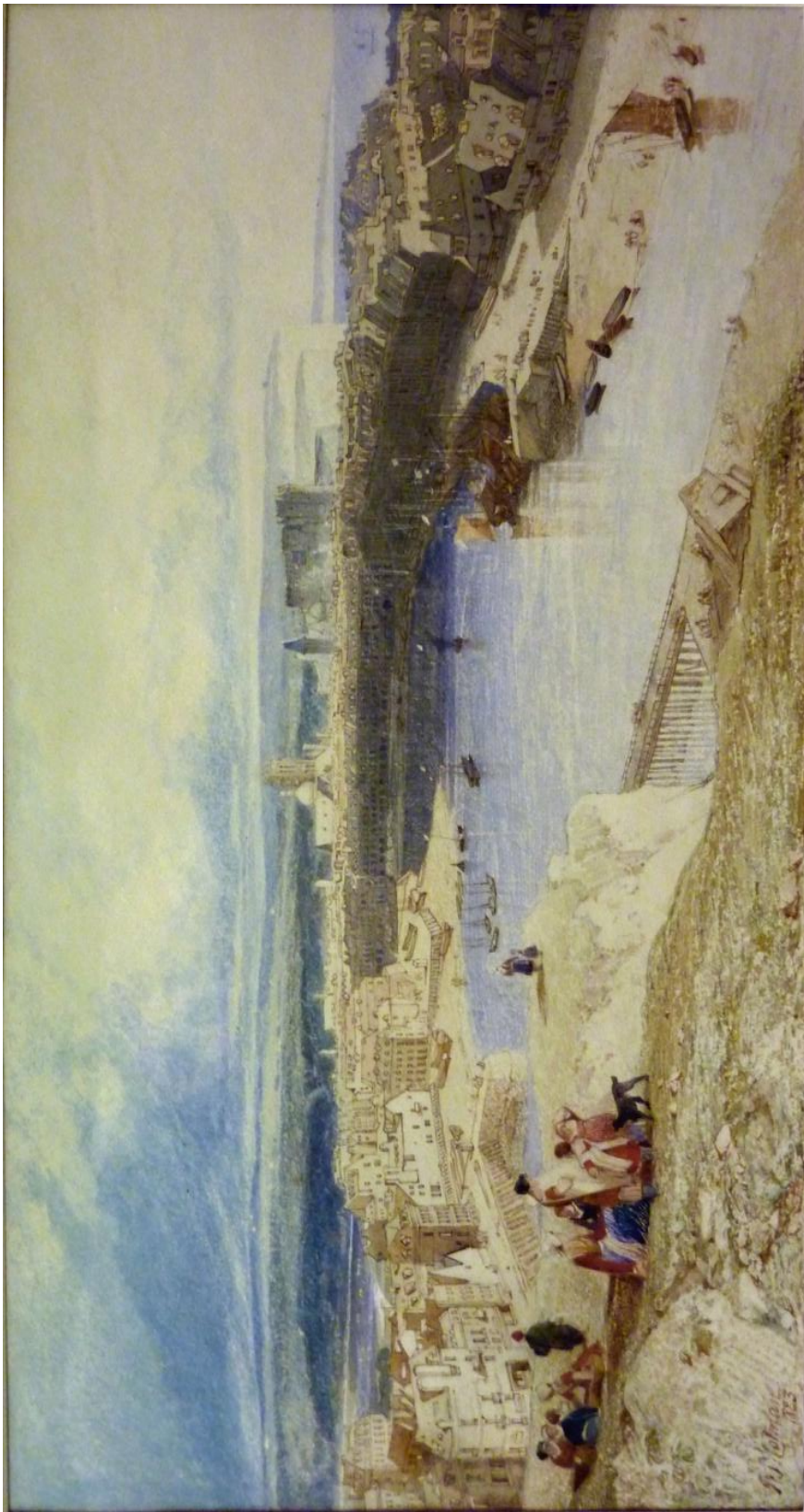


Figure 172. *Dieppe from the Heights to the East of the Port, looking down upon the Harbour Churches of St. Jacques and St. Remi, and along the coast towards St. Vallery*, Exh. NSA 1823 and/or 1824 and SPWC 1825, 28.4 x 53.3 cm, Victoria & Albert Museum, London



Figure 173. Detail of *Dieppe from the Heights*



Figure 174. *Landscape*, c.1835, pencil, black chalk and watercolour, 34.7 x 45.9 cm, Norwich Castle Museum & Art Gallery, Norwich



Figure 175. Detail of *Landscape*



Figure 176. *Silver Birches*, 1831, watercolour on paper, 41.2 x 29.2 cm, Norwich Castle Museum & Art Gallery, Norwich



Figure 177. *Silver Birches*, c.1835, oil on canvas, 76.2 x 62.7 cm, Norwich Castle Museum & Art Gallery, Norwich



Figure 178. *Storm on Yarmouth Beach*, 1831, watercolour, bodycolour, paste medium, pen and ink on paper, 36.8 x 53.7 cm, Norwich Castle Museum & Art Gallery, Norwich



Figure 179. *St Benet's Abbey*, 1831, watercolour on paper, 32 x 47 cm, Norwich Castle Museum & Art Gallery, Norwich



Figure 180. *Drainage Mills in the Fens*, c.1835, oil on canvas, 55.2 x 91.8 cm Yale Center for British Art, New Haven



Figure 181. *The Baggage Wagon*, c.1824-28, oil on panel, 43 x 35.2 cm, Norwich Castle Museum & Art Gallery, Norwich



Figure 182. *Mount St. Michael, on the side of Pontorson, Normandy: showing the Phenomenon of the Mirage*, Exh. NSA 1823 and/or 1824 and SPWC 1825, watercolour over pencil on paper, British Museum, London



Figure 183. *Abbatial House, of the Abbey of St. Ouen at Rouen, taken down in 1817*, Exh. NSA 1824 and SPWC 1825, watercolour, pen, ink and bodycolour on paper, 42.3 x 57.3 cm, Norwich Castle Museum & Art Gallery, Norwich



Figure 184. *Hôtel de Ville, Ulm*, Exh. SPWC 1831, watercolour on paper, 50.6 x 70 cm, National Gallery of Canada, Ottawa



Figure 185. J. M. W. Turner, *Richmond Hill*, c.1820-5, watercolour and bodycolour on paper, 29.7 x 48.9 cm, National Museums and Galleries on Merseyside (Lady Lever Art Gallery, Port Sunlight)



Figure 186. Bernard William Cooke after J. M. W. Turner, 'Torbay from Brixham' from *Picturesque Views on the Southern Coast of England*, 1821, engraving on paper, 15.8 x 24.2 cm, Tate, London

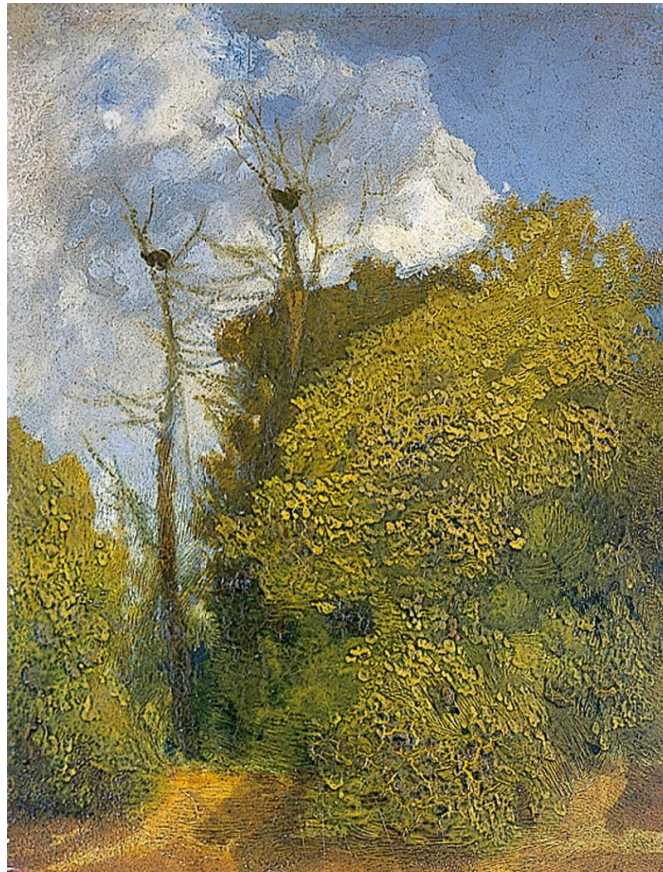


Figure 187. *In the Bishop's Garden (Landscape)*, c.1824-5, oil on millboard, 25.6 x 18.9 cm, Norwich Castle Museum & Art Gallery, Norwich



Figure 188. *The Mishap*, c.1824-8, oil on panel, 43 x 35.4 cm, Norwich Castle Museum & Art Gallery, Norwich



Figure 189. *The Drop Gate*, c.1826, oil on canvas, 34.9 x 26 cm, Tate, London



Figure 190. *The Silent Stream, Normandy*, 1824-8, oil on canvas, 40.2 x 33.5cm, Norwich Castle Museum & Art Gallery, Norwich



Figure 191. Richard Parkes Bonington, *A Wooded Lane*, oil on millboard, 27.9 x 22.9 cm, Yale Center for British Art, New Haven



Figure 192. Richard Parkes Bonington, *In the Forest of Fontainebleau*, 1825, oil on millboard, 32.4 x 24.1 cm, Yale Center for British Art, New Haven



Figure 193. J. M. W. Turner, *A Beech Wood with Gypsies round a Campfire*, c.1799-1801, oil on paper laid on panel, 27 x 19 cm, Fitzwilliam Museum, Cambridge



Figure 194. *Dutch Boats off Yarmouth, Prizes during the War*, Exh. BI 1823 and NSA 1824, oil on mahogany panel, 43.5 x 63.5 cm, Norwich Castle Museum & Art Gallery, Norwich



Figure 195. *An Ecclesiastic*, Exh. Bath Society for the Encouragement of the Fine Arts 1839, oil and pencil on panel, 44.7 x 33.9 cm, Norwich Castle Museum & Art Gallery, Norwich



Figure 196. *A Monk*, Exh. Bath Society for the Encouragement of the Fine Arts 1839, oil and pencil on panel, 44.8 x 34 cm, Norwich Castle Museum & Art Gallery, Norwich



Figure 197. John Sell and Miles Edmund Cotman, *The Wreck of the Houghton Pictures Consigned to the Empress Catherine of Russia, including the gorgeous landscape by Rubens of the Waggoner*, Exh. SPWC and Royal Institution, Manchester 1838, watercolour on paper, 68 x 90.2 cm, Fitzwilliam Museum, Cambridge



Figure 198. *The Drawing Master*, Exh. Norfolk and Norwich Art Union 1839, watercolour, pencil, and painted paper pasted onto paper, 33.2 x 47.8 cm, Norwich Castle Museum & Art Gallery, Norwich