

# Bridging the mental health treatment gap: effects of a collaborative care intervention (matrix support) in the detection and treatment of mental disorders in a Brazilian city

Sonia Saraiva <sup>1</sup>, Max Bachmann,<sup>2</sup> Matheus Andrade,<sup>3</sup> Alberto Liria<sup>4</sup>

**To cite:** Saraiva S, Bachmann M, Andrade M, *et al.* Bridging the mental health treatment gap: effects of a collaborative care intervention (matrix support) in the detection and treatment of mental disorders in a Brazilian city. *Fam Med Com Health* 2020;**8**:e000263. doi:10.1136/fmch-2019-000263



© Author(s) (or their employer(s)) 2020. Re-use permitted under CC BY-NC. No commercial re-use. See rights and permissions. Published by BMJ.

<sup>1</sup>Leeds Institute of Health Sciences, University of Leeds, Leeds, UK

<sup>2</sup>Norwich Medical School, University of East Anglia, Norwich, UK

<sup>3</sup>Secretaria Municipal de Saúde (Municipal Health Department), Florianópolis, Brazil

<sup>4</sup>Departamento de Especialidades Médicas, Facultad de Medicina y Ciencias de la Salud, Universidad de Alcalá, Alcalá de Henares, Spain

## Correspondence to

Dr Sonia Saraiva;  
soniasaraiva@hotmail.com

## ABSTRACT

**Objective** To analyse temporal trends in diagnosis and treatment of mental disorders in primary care following implementation of a collaborative care intervention (matrix support).

**Design** Dynamic cohort design with retrospective time-series analysis. Structured secondary data on medical visits to general practitioners of all study clinics were extracted from the municipal electronic records database. Annual changes in the odds of mental disorders diagnoses and antidepressants prescriptions were estimated by multiple logistic regression at visit and patient-year levels with diagnoses or prescriptions as outcomes. Annual changes during two distinct stages of the intervention (stage 1 when it was restricted to mental health (2005–2009), and stage 2 when it was expanded to other areas (2010–2015)) were compared by adding year–period interaction terms to each model.

**Setting** 49 primary care clinics in the city of Florianópolis, Brazil.

**Participants** All adults attending primary care clinics of the study setting between 2005 and 2015.

**Results** 3 131 983 visits representing 322 100 patients were analysed. At visit level, the odds of mental disorder diagnosis increased by 13% per year during stage 1 (OR 1.13, 95% CI 1.11 to 1.14,  $p < 0.001$ ) and decreased by 5% thereafter (OR 0.95, 95% CI 0.94 to 0.95,  $p < 0.001$ ). The odds of incident mental disorder diagnoses decreased by 1% per year during stage 1 (OR 0.99, 95% CI 0.98 to 1.00,  $p = 0.012$ ) and decreased by 7% per year during stage 2 (OR 0.93, 95% CI 0.92 to 0.93,  $p < 0.001$ ). The odds of antidepressant prescriptions in patients with a mental disorder diagnosis increased by 7% per year during stage 1 (OR 1.07, 95% CI 1.05 to 1.20,  $p < 0.001$ ); this was driven by selective serotonin reuptake inhibitor prescriptions which increased 14% per year during stage 1 (OR 1.14, 95% CI 1.12 to 1.18,  $p < 0.001$ ) and 9% during stage 2 (OR 1.09, 95% CI 1.08 to 1.10,  $p < 0.001$ ). The odds of incident antidepressant prescriptions did not increase during stage 1 (OR 1.00, 95% CI 0.97 to 1.02,  $p = 0.665$ ) and increased by 3% during stage 2 (OR 1.03, 95% CI 1.00 to 1.04,  $p < 0.001$ ). Changes per year were all significantly greater during stage 1 than stage 2 ( $p$  values for interaction terms  $< 0.05$ ), except for antidepressant prescriptions during visits ( $p = 0.172$ ).

## Key messages

### Question

► What are the effects of the matrix support model of collaborative care in the detection and treatment of mental disorders by general practitioners in a developing primary care system?

### Finding

► When implemented with on-site support to clinical and administrative integration between mental health and primary care providers, the matrix support was associated with improved detection and treatment of mental disorders by general practitioners (GPs).

### Meaning

► Collaborative care models based on the matrix support components—advice and support to GPs and on-site specialist care provided by mental health professionals, coupled with joint case management—might improve detection and treatment of mental disorders in primary care. Future studies with experimental designs and clinical outcomes are needed to establish the potential of this intervention in reducing the treatment gap in mental health.

**Conclusion** The matrix support intervention may increase diagnosis and treatment of mental disorders when inter-professional collaboration is adequately supported. Competing demands to the primary care teams can subsequently reduce these effects. Future studies should assess clinical outcomes and identify active components and factors associated with successful implementation.

## INTRODUCTION

An estimated 35%–50% of people with mental disorders in high-income countries and 76%–85% in low-income and middle-income countries receive no treatment, what results in avoidable suffering, disability and economic loss.<sup>1 2</sup> Anxiety and depressive disorders have the highest estimated

lifetime rates, of about 16% and 12%, respectively.<sup>2</sup> Low-income and middle-income countries are hit harder due to a combination of low educational and socioeconomic attainment among the patients, poor work conditions of practitioners and inefficient use of resources, which are mostly invested in psychiatric hospitals despite the association of these settings with poor health outcomes.<sup>1</sup>

Brazil is more affected than other low-income and middle-income countries, with mental disorders present in 29.6% of adult São Paulo residents—of whom two-thirds receive no treatment<sup>3</sup>—and over half of adults attending Petrópolis primary care (PC) practices.<sup>4</sup> The combination of low recognition, diagnostic inaccuracy and low treatment offer in primary care practice may contribute to a treatment gap.<sup>5</sup> Integrating mental health (MH) care into PC provision will improve the effectiveness of care by providing opportune access and early treatment while reducing associated stigma.<sup>1</sup> This requires from primary care practitioners (PCPs) new knowledge and skills to identify, manage and refer mental disorders; and from MH providers, new roles of advising and support to PCPs.<sup>15</sup> Several integration approaches have been tested; of these, collaborative care has the strongest evidence base.<sup>6–8</sup>

Collaborative care interventions aim to develop closer work relationships and improve continuity of care between PCPs and specialist providers, based on a multi-professional approach to care, structured management plans and patient follow-up, and enhanced inter-professional communication.<sup>7–9</sup> That is usually operated through advice and support from specialists to general practitioners (GPs) in the form of clinical discussions, case management and specialist care to selected patients.<sup>7 10 11</sup> Successful implementation relies on organisational support to identify training needs and barriers, review professional roles and provide feedback about the integration.<sup>10 11</sup>

A number of high-quality trials and systematic reviews have shown that collaborative care is more effective than standard care for depression and anxiety,<sup>6</sup> is cost-effective when compared with usual care,<sup>8</sup> and has positive effects in terms of case detection, treatment offer, clinical

outcomes and patient satisfaction.<sup>6–8 10</sup> Most studies were conducted in experimental settings of the USA and the UK,<sup>7</sup> and little is known about collaborative care in the PC practice settings of low-income and middle-income countries. Conducting studies in such settings may improve understanding of how successful research interventions are translated into real-world contexts.

Brazil, a middle-income country which has one of the world's largest universal health systems, has increased access to healthcare in the last two decades through the Family Health Strategy (FHS), an approach to PC based on multi-professional teams with a doctor (general physician), nurse, nursing assistant and community health workers responsible for catchment areas of 3000–4000 people.<sup>12</sup> Within primary care, mental health professionals are integrated into the PC teams through the matrix support model, a locally adapted collaborative care model which aims to increase access to care and co-ordination.<sup>13</sup> Matrix support was piloted in a few cities in the early 2000s as an MH intervention and, from 2008, it was expanded to other areas like rehabilitation and nutritional care and scaled up as the federally funded NASF programme (original acronym for Family Health Support Teams), which had over 4000 teams implemented in 2016.

The matrix support intervention integrates key features of collaborative care like multi-professional care, enhanced communication and structured follow-up, to local innovations like joint consultations between MH professionals and PCPs. Key similarities between the models are the centrality of enhanced communication and collaborative clinical work between providers.<sup>13 14</sup> Table 1 summarises the components and activities of matrix support.

Previous studies suggested that the Brazilian matrix support model might have similar effects to other collaborative care models mentioned in the literature, for example, improving detection of mental disorders, co-ordination between MH and PC providers,<sup>15</sup> and overall quality of PC teams.<sup>16</sup> However, so far, there are no published evaluations of matrix support using routine services data. This study aimed to analyse the association between implementation of matrix support in the Brazilian city of Florianópolis and the detection and

**Table 1** Key components and activities of the matrix support intervention

Components	Activities
Advice and support from mental health to primary care professionals	Case discussion Follow-up of treatment plans On-site training and joint consultations
Specialist care provided by the mental health professionals	Outpatient management of severe cases Referral and liaison to other services
Joint case management and administrative activities	Feedback on referrals and waiting lists Agreement of local guidelines and protocols Definition of professional roles in collaborative care Identification of training and support needs

Source: adapted from Saraiva *et al.*<sup>14</sup>

treatment of mental disorders by PCPs between 2005 and 2015, as well as to compare two distinct stages of the intervention, as a mental health-only programme and as part of the NASF programme, through statistical analysis of electronic medical record (EMR) data.

## METHODS

### Study setting

Florianópolis is a state capital in the south of Brazil of 500 973 inhabitants in 2019.<sup>17</sup> Primary care is based on the FHS model, and it was expanded from 48 FHS teams in 2005, covering 42% of an estimated 394 285 inhabitants, to 150 teams in 2015 covering 100% of 469 690 inhabitants. All residents are assigned to one of 49 municipal PC clinics in each of which work 1 to 6 FHS teams providing preventive care, nursing care, medical treatment, free medicines, preventive care and referrals. The city has long been recognised for the coverage and quality of primary care and mental health care<sup>18 19</sup> and was awarded a Ministry of Health's prize for its matrix support intervention.<sup>20</sup> Despite these achievements, the local health system faces constraints similar to other low-income and middle-income countries, like insufficient staff, poor physical structure and unequal access to healthcare.<sup>21</sup>

### Implementation of the intervention

Matrix support was implemented in Florianópolis initially as an MH intervention (2005–2009) and further as part of the NASF programme (from 2010). These two periods correspond to two distinct stages of the matrix support intervention. In stage 1, the outpatient's referral system to MH professionals was replaced by regular meetings between PC and MH teams, in which both jointly agreed and monitored treatment plans and performed collaborative activities like case discussions or joint visits. Those meetings were also used to on-site training through discussion of diagnostic criteria for mental disorders, screening during routine consultations and feedback about the GP referrals to mental health professionals. Communication by phone or email between the meetings was encouraged, and selected patients were seen by the MH team or referred to MH services. A dedicated programme manager with MH background provided on-site support to the clinical and administrative integration.<sup>18 20</sup>

In stage 2, with funding from the NASF programme, the MH professionals were integrated into the broader NASF teams, where they needed to share the restricted time of the PC teams with other professionals like physiotherapists and dietitians.<sup>22</sup> The programme management was decentralised to middle managers who were already in charge of several other PC programmes, so less support was available for the integration between MH and PC professionals. Previous studies have stressed the importance of management support to successfully implementing matrix support, through integrating distinct professionals' agendas, guaranteeing regular meetings, and dealing with continuity gaps and communication

problems.<sup>23 24</sup> Therefore, less support for clinical integration was likely to negatively impact on the outcomes of the matrix support intervention.

### Study design

This was a programme evaluation with a dynamic cohort design, that is, participants could enter and leave the cohort at any time, with a retrospective time-series analysis of outpatient attendances at health centres (PC clinics). The primary units of analysis were individual patients and their attendances (visits). Data were extracted from a consolidated EMR database, which registers all patient visits to the services of the city's Municipal Health Secretary. Structured data including age, gender, ICD-10 diagnostic code and drug prescriptions are recorded by all PC workers for each individual visit and then automatically consolidated at clinic and system levels. Data were included while each PC clinic implemented the EMR system, which was expanded during the study period (from 13 clinics in 2005 to 49 in 2015).

### Study population

Patients aged 18 years or over who had at least one visit to a GP in a PC clinic with the EMR system implemented between 1 January 2005 and 31 December 2015 were included. Visits to non-medical PC personnel, for example, nurses, were not included because although these professionals also participated in matrix support activities like case discussion and on-site training, they were not directly responsible for the diagnosis and treatment of patients with mental disorders. Visits to non-PC services were not included because these services were not part of the intervention.

### Outcomes

The following measures of detection and treatment of mental disorders by GPs were built on the available data, the intervention objectives and the mentioned previous research on collaborative care.

- ▶ Detection of mental disorders: the proportion of all visits in which any mental disorder diagnosis was recorded; the proportion of all patients attending during each calendar year in whom any mental disorder diagnosis was recorded during the same year; the proportion of all patients attending during each calendar year in whom any mental disorder diagnosis was recorded for the first time during the same year ('incident diagnoses'). The 'proportion of visits' reflects changes in the workload of the GPs with mental disorders, while the 'proportion of patients' assesses whether more distinct patients with mental disorders were seen since the same patient might have several visits.
- ▶ Treatment of anxiety and depressive disorders: the proportion of all visits with a diagnosis of anxiety or depressive disorder recorded in which an antidepressant was prescribed during the same visit; the proportion of all patients who attended during a calendar

year with an anxiety or depressive disorder diagnosed to whom an antidepressant was prescribed during the same year; the proportion of all patients who attended during a calendar year with an anxiety or depressive disorder diagnosed to whom an antidepressant was prescribed for the first time during the same year ('incident treatments'). These outcomes are proxy indicators of access to treatment of these mental health conditions in primary care.

Anxiety and depressive disorders are generally viewed as the main remit of PC<sup>5</sup> and are particularly frequent in Brazil.<sup>4</sup> Both antidepressants and psychotherapy are effective treatments for most anxiety and depressive disorders, but only antidepressants (tricyclics and selective serotonin reuptake inhibitors—SSRIs) were regularly provided in the study clinics and had consistent records in the EMR database. SSRIs are associated with fewer side effects on depression treatment and are usually preferable to tricyclics for anxiety disorders.<sup>25</sup> Therefore, an analysis by antidepressant class was added to assess if any increases in treatments were driven by SSRIs, expressing adequacy of treatments. The analysis of prescriptions at visit and patient levels followed the same rationale explained previously for detection.

Each outcome was analysed for the whole period of study (2005–2015) and for each intervention stage separately. Date limits were established on an annual basis (stage 1: 1 January 2005 to 31 December 2009; stage 2: 1 January 2010 to 31 December 2015).

### Data collection and management

Data on outcomes measures and baseline variables were extracted from the EMR database by one of the authors with authorisation of the Municipal Secretary of Health (local health authority) and securely stored at the University of East Anglia. Only secondary anonymised data were used. The authors had no access to patient identifiers.

### Statistical analysis

Descriptive statistics are presented for baseline variables. Statistical analyses aimed to estimate annual changes in the odds of mental disorders being recorded during a GP visit or during a patient-year, and in the odds of antidepressants being prescribed for visits of patients with anxiety or depressive disorders, or in a patient-year with anxiety or depressive disorder. Diagnosis of a mental disorder was defined as the recording of an ICD-10 code with an F prefix and of anxiety and depressive disorders as ICD-10 codes F32-39 plus F40–48. Antidepressant prescriptions were defined as any tricyclic or SSRI prescriptions recorded. For analyses of incident diagnoses or treatments recorded for the first time during a year, patients were removed from the denominator population at risk if they had had the same diagnosis or treatment in previous years. The 95% CIs for proportions of patients or visits with each outcome were estimated with adjustment for clustering of outcomes within patients.

The effects of the intervention on outcomes were estimated using segmented interrupted time series regression models.<sup>26</sup> The regression model equations were:

$$Y_t = \beta_0 + \beta_1 T + \beta_2 X_t + \beta_3 T X_t + \beta_k K$$

where  $T$  represents the year,  $X_t$  is a dummy variable indicating stage 1 (coded 0) or stage 2 (coded 1),  $Y_t$  represents the outcome at year  $t$ ,  $\beta_0$  represents the baseline level at year 0,  $\beta_1$  represents the change in outcome associated with an additional year during stage 1,  $\beta_2$  represents the baseline difference in intercept for stage 2 time trend,  $\beta_3$  is the change in time trend from stage 1 to stage 2 and  $\beta_k$  is the vector of coefficients corresponding to the other covariates  $K$ .<sup>26</sup>  $T X_t$  is thus an interaction term with a value of zero during stage 1 and a value of  $T$  during stage 2, and the time trend during stage 2 was obtained by multiplying  $\beta_1$  and  $\beta_3$ . Modelling time as a continuous variable avoids the problem of time-stage collinearity and enables different trends to be estimated for each stage. All models included age and sex as covariates, used robust adjustment for intra-patient correlation of outcomes and included dummy variables for each clinic to account for intra-clinic correlation of outcomes. Modelling clinics as covariates is equivalent to multilevel modelling with randomly varying intercepts for clinics. Multilevel mixed regression models with both clinics and patients as random effects could not be computed because of the large sample with over 3 million records. A 5% significance level was used. Statistical analysis was done with Stata V.16.

## RESULTS

### Sample characteristics

There were 3 131 983 visits of adults (median age 46 years) to GPs in the study clinics between 2005 and 2015, of whom 207 314 (6.6%) had mental disorders recorded. Antidepressants were prescribed in 45.7% of the visits where anxiety or depressive disorder diagnosis was recorded. A total of 322 100 patients attended the visits, of whom 58 179 (18.0%) had a mental disorder ever recorded, and 46 378 (14.4%) had an anxiety or depressive disorder ever recorded. Women comprised 68.7% of patients with mental disorders, and 74.7% of patients with anxiety or depressive disorders.

### Detection of mental disorders

The proportions of visits and patients in which mental disorders diagnosis were recorded increased from 2005 to 2010 and decreased after that (table 2, figure 1). Considering the entire period, from 2005 to 2015, there was no change each year in the odds of a mental disorder being recorded at any visit (OR 1.00 95% CI 1.00 to 1.00,  $p < 0.441$ ), after adjustment for gender and age.

In the comparison between intervention stages, the odds of visits having a mental disorder recorded during a visit increased by 13% per year during stage 1 and decreased by 5% per year during stage 2 ( $p$  for year–period interaction  $< 0.001$ ) (table 3). The odds of patients seen by a GP during a year having a mental disorder recorded

**Table 2** Frequency of diagnosis of mental disorders over time

Year	2005	2006	2007	2008	2009	2010	2011	2012	2013	2014	2015
No of health centres (PC clinics)	13	18	21	32	36	38	46	49	49	50	49*
Total no of visits with any diagnosis recorded by a general practitioner	93 221	124 024	179 481	223 438	289 878	299 055	342 432	350 158	381 109	422 733	426 454
Total no of patients with any diagnosis recorded by a general practitioner	34 713	45 515	61 280	78 217	92 595	95 119	106 812	111 810	116 203	124 104	126 936
No of visits with mental disorder recorded during a year	3964	5968	8955	15769	20 406	23 203	25 580	24 374	26 281	27 196	25 618
No of patients with mental disorder recorded during a year	2454	3599	5095	7950	9657	10 763	11 770	11 995	12 628	12 996	12 869
Total no of patients without mental disorder recorded in previous years	34 699	43 715	57 531	72 138	82 478	81 997	90 350	92 707	94 599	99 697	100 447
No of patients with incident diagnosis of mental disorder during a year	2440	2829	3645	5552	5559	5639	5765	5418	5501	5368	5140

\*The reduction from 50 to 49 was due to the merging of two small health centres.

during the same year increased by 10% per year in stage 1 and decreased by 3% per year in stage 2 (p for year–stage interaction <0.001). The odds of incident mental disorder diagnoses decreased by 1% per year during stage 1 (OR 0.99, 95% CI 0.98 to 1.00, p<0.012) and decreased by 7% per year during stage 2 (OR 0.93, 95% CI 0.92 to 0.93, p<0.001).

### Prescription of antidepressants

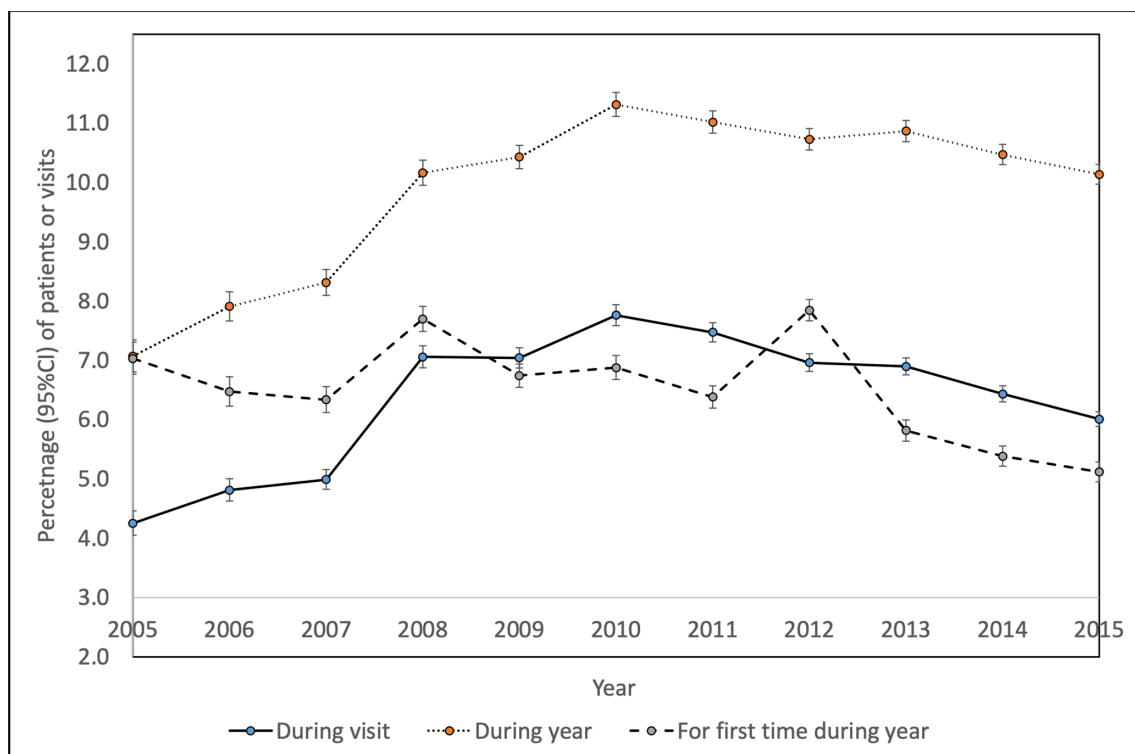
Among visits where a diagnosis of anxiety or depressive disorder was recorded, the probability of an antidepressant being prescribed increased between 2005 and 2015 overall (table 4, figure 2). The odds of visits with an anxiety or depressive disorder recorded in which an antidepressant was prescribed increased by 19% per year during stage 1 and increased less rapidly, at 5% per year, during stage 2 (p for interaction=0.172) (table 3). In the analysis at patient-year level, the odds of any antidepressant being prescribed during a year increased by 13% per year during stage 1 and by 7% during stage 2 (p for interaction <0.001). The odds of incident antidepressant prescriptions did not increase during stage 1 (OR 1.00, 95% CI 0.97 to 1.02, p=0.665) and increased by 3% during stage 2 (OR 1.03, 95% CI 1.00 to 1.04, p<0.001).

Splitting by antidepressant class, between 2005 and 2015, the probability of an SSRI being prescribed increased and the probability of tricyclics being prescribed decreased, in both visits and patient-year levels of analysis (table 4, figure 3). There was an 8% increase in SSRI prescription and a 2% decrease per year in tricyclics prescription during visits over the whole period. There was a 10% increase per year in SSRI prescription and a 1% decrease per year in tricyclics prescription during patient-years. The prescription of tricyclics was independently more likely in older and female patients (adjusted OR 1.08 (95% CI 1.06 to 1.09) per 10 years of age and 1.35 (95% CI 1.26 to 1.46), respectively, in visits; and 1.13 (95% CI 1.11 to 1.15) per 10 years of age and 1.37 (95% CI 1.29 to 1.46), respectively, during patient-years).

In the comparison between stages of the intervention, the odds of SSRI prescription during any visit increased by 14% per year during stage 1 and by 9% per year during stage 2 (p for year–stage interaction <0.001) (table 3). Tricyclic prescribing during visits increased by 3% per year during in stage 1 and decreased by 6% per year during stage 2 (p for interaction <0.001). In analysis at patient-year level, the odds of SSRI prescription during a year increased by 18% per year during stage 1 and by 10% per year during stage 2 (p for year–period interaction <0.001). Tricyclic prescription during a year increased by 6% per year in stage 1 and decreased by 6.6% per year during stage 2 (p for year–period interaction <0.001).

### DISCUSSION

This is the first study that reports mental health outcomes of the matrix support intervention based on routinely collected health services data. The results of



**Figure 1** Mental disorder diagnosis per visit and per patient, 2005–2015.

stage 1 (2005–2009) suggest that the matrix support between MH and PC professionals when implemented with on-site support for clinical and administrative integration was associated with improved detection of mental disorders and improved treatment of anxiety and depressive disorders. The same temporal trends were observed in the analysis at visits and patient-year levels, meaning that more distinct patients were diagnosed and treated for mental disorders in this period. These results are consistent with the matrix support overall goal of increasing access to care and with previous research on collaborative care.<sup>7–10</sup> During stage 1, both diagnosis of mental disorders and SSRI prescribing increased, but during stage 2 both diagnosis and tricyclic prescribing decreased, while SSRI prescribing increased at a lower rate. The main changes in the intervention from stage 1 to stage 2 which could explain such different results were the reduction of organisational support to services integration, and the increasing competing demands to the primary care teams with the expansion of matrix support to other areas beyond mental health. These factors should have reduced the intensity or quality of the clinical collaboration between MH and PC professionals. This interpretation should be made with caution due to the number of possible intervening factors. Although the study design did not allow causal inference, its scale and pioneering, and the relevance of the matrix support for Brazil's health system, make the findings of interest to policy-makers, managers and practitioners involved in integrating MH and PC, in Brazil and countries with similar health systems.

### Sample features and recording issues

The predominance of middle-aged women was consistent with previous research conducted among PC attendees in Brazil, which show that being a woman was the socio-demographic variable most associated with the chance of receiving MH care.<sup>27</sup> This predominance might be explained by less dependence on others to access the services when compared with younger or older people, as well as a reduced perception of stigma associated with seeking MH care when compared with men.<sup>28</sup>

The finding of anxiety and depressive disorders as main diagnoses also followed the pattern usually observed in community surveys.<sup>3</sup> The rates of mental disorders (18.0%) and anxiety and depressive disorders (14.4%) in our sample were lower than reported in other studies in PC populations; for example, one study in four major Brazilian cities found prevalence of anxiety and depression in adults attending PC clinics between 35%–43% and 21%–31%, respectively.<sup>27</sup> This difference in our findings may be due to methodological issues, rather than lack of recognition.<sup>29</sup> Most services surveys use standardised diagnostic instruments, which are associated with higher diagnosis rates of mental disorders when compared with records of routine clinical practice.<sup>30</sup> One survey in Brazil found that only 5.6% of PC attendees had a psychiatric diagnosis recorded, while 44.1% had an anxiety or depressive disorder according to a standard instrument.<sup>31</sup> Some reasons for this issue are high comorbidity, problems presenting in undifferentiated forms, and the preference of the GPs for recording symptoms or physical conditions as reasons for visits instead of assigning a psychiatric

**Table 3** Patient and visit level analyses: changes in odds of recorded diagnosis of mental disorder and prescription of antidepressants during stage 1 and stage 2: logistic regression models\*

Outcome variable	OR for difference of 1 year during stage 1 (mental health only intervention)			OR for difference of 1 year during stage 2 (NASF programme)			Significance of difference in ORs stage 2 vs stage 1
	OR	95% CI	P value	OR	95% CI	P value	
Mental disorder recorded in patients visiting primary care:							
During visit	1.13	1.11 to 1.14	<0.001	0.95	0.94 to 0.95	<0.001	<0.001
During year	1.10	1.09 to 1.11	<0.001	0.97	0.97 to 0.98	<0.001	<0.001
Incident diagnosis during year	0.99	0.98 to 1.00	0.012	0.93	0.92 to 0.93	<0.001	<0.001
Antidepressants prescribed in patients with diagnosis of anxiety or depression:							
Any antidepressant during visit	1.07	1.05 to 1.09	<0.001	1.05	1.04 to 1.06	<0.001	0.172
Any antidepressant during year	1.13	1.10 to 1.15	<0.001	1.07	1.06 to 1.08	<0.001	<0.001
Incident antidepressant treatment during year	1.00	0.97 to 1.02	0.655	1.03	1.00 to 1.04	<0.001	0.024
SSRI during visit	1.14	1.12 to 1.18	<0.001	1.09	1.08 to 1.10	<0.001	<0.001
SSRI during year	1.18	1.16 to 1.21	<0.001	1.10	1.09 to 1.12	<0.001	<0.001
Tricyclic during visit	1.03	1.00 to 1.06	<0.001	0.94	0.92 to 0.95	<0.001	<0.001
Tricyclic during year	1.06	1.03 to 1.09	<0.001	0.94	0.93 to 0.95	<0.001	<0.001

\*All models also adjusted for age, sex, clinic and intraclass correlation of outcomes within individuals.

†P value for year–stage interaction.

SSRI, selective serotonin reuptake inhibitor.

**Table 4** Frequency of antidepressant prescriptions over time

Year	2005	2006	2007	2008	2009	2010	2011	2012	2013	2014	2015
No of health centres (PC clinics)	13	18	21	32	36	38	46	49	49	50	49*
Total no of patients with anxiety or depression recorded during a year	2220	3915	5560	7707	9304	9715	10492	10787	10901	11182	10959
Total no of visits with anxiety or depression recorded during a year	3060	4672	6895	11511	14781	16912	19148	18103	19091	19344	18040
No of visits with SSRI prescribed	771	1242	1734	3398	5481	6175	6846	6556	7381	7882	7852
No of patients with SSRI prescribed during a year	829	1604	2358	3367	4416	4512	4792	5144	5707	6013	5957
No of visits with tricyclic prescribed	560	730	1012	1678	2582	2899	3184	2761	2817	2541	2344
No of patients with tricyclic prescribed during a year	586	1088	1511	1760	2441	2397	2554	2453	2484	2266	2123
No of patients with any antidepressant prescribed during visit	1297	1870	2582	4600	7157	8123	8860	8267	9003	9341	9253
No of patients with any antidepressant prescribed during a year	1231	2286	3214	4308	5675	5795	6100	6334	6820	7049	6974
Total no of patients without any antidepressant prescribed in previous years	1899	2224	2907	4354	4572	4479	4899	4689	4800	4737	4383
No of patients with any antidepressant prescribed for the first time during a year	994	1060	1321	2025	2324	2064	2147	1959	2142	2151	1986

\*The reduction from 50 to 49 was due to the merging of two small health centres. SSRI, selective serotonin reuptake inhibitor.

label to patients, especially those with mild symptoms or social distress.<sup>29 32</sup> This is especially relevant, considering that the EMR data obtained for this study only informed one ICD-10 code per visit. Ultimately, the analysis of GP records might say more about the provision of care than the prevalence or the need in the population.

### Increase in detection and treatment of mental disorders

The prevalence of mental disorders is relatively stable in people presenting to PC,<sup>30</sup> meaning that the increasing records observed in stage 1 reflect increased recognition of patients with mental disorders and, potentially, increased access to care. The increase in diagnoses during year or visit, together with no increase in incident diagnoses, suggests that patients in whom a diagnosis has already been made are having their mental disorder increasingly recognised by GPs at subsequent visits. Trends for antidepressants are similar; the small increase in incident treatments in stage 2 may represent patients previously recognised being now treated.

While higher recognition might occur at the expenses of oversensitivity and lack of specificity, and not necessarily improve patient outcomes,<sup>33</sup> a systematic review showed that non-psychiatric physicians indeed have low sensitivity (36.4%) and high specificity (83.7%) for diagnosing 'true' cases of depression, as defined by standardised diagnostic instruments.<sup>32</sup> The increase in antidepressant prescription observed mostly in stage 1 also reflects improved access to care. The use of antidepressant prescriptions alongside diagnostic codes to define depression was shown to improve case extraction from EMR data and be a better reflection of recognition by GPs,<sup>29</sup> what may be due to GPs' recording preferences discussed earlier.<sup>32</sup> It remains an open debate to what extent GPs underdiagnose depression or instead avoid medicalising normal human distress.<sup>30 33</sup>

The increase in antidepressant prescription was driven by SSRIs, while tricyclics decreased, as observed in other collaborative care studies.<sup>6</sup> Increased antidepressant use is a worldwide phenomenon associated with broader societal factors, including the availability of new drugs, broadening of indications and advertising strategies.<sup>34</sup> In major Brazilian cities, most people taking psychotropic drugs do not have mental disorders, while most people with mental disorders remain without treatment,<sup>35</sup> a paradox also observed in other countries.<sup>28</sup> In PC settings, overtreatment with antidepressants is more related to prolonged use than to inadequate indication.<sup>36</sup> GPs tend to continue prescriptions once they have started, for reasons which include patient pressure, time constraints and lack of treatment alternatives.<sup>37</sup> The combination of societal trends and GP habits might explain why SSRI prescriptions still increased in stage 2, despite reduced detection of mental disorders.

### Distinct outcome patterns across stages of the intervention

The decrease of diagnoses and reduced treatment increase observed in stage 2 might be explained by differences in

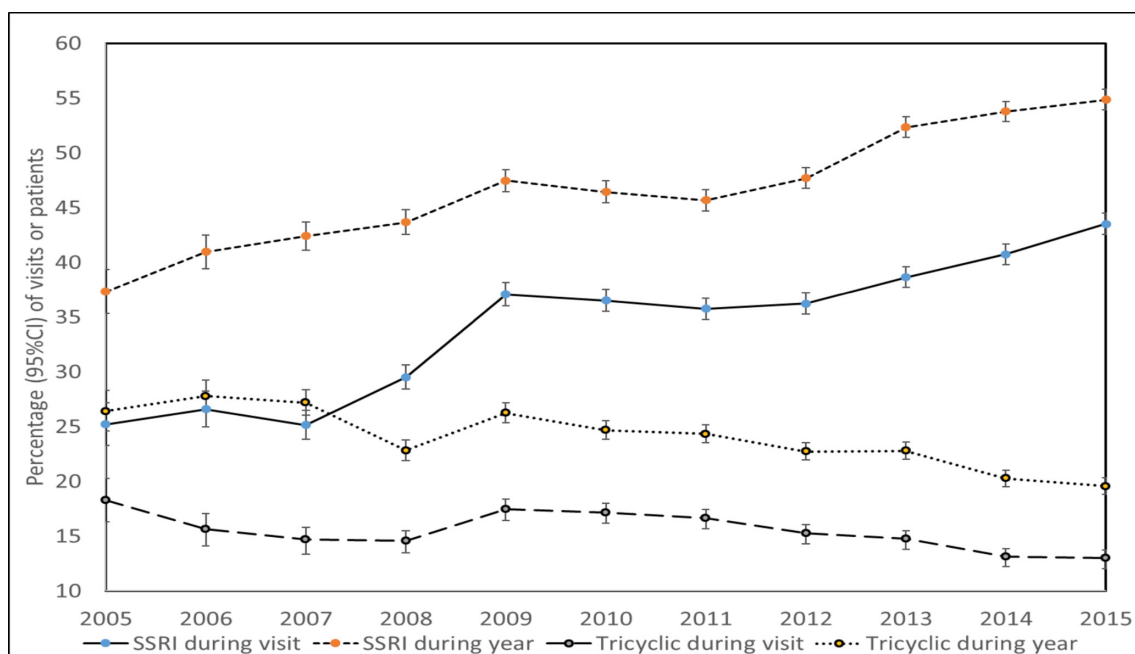




**Figure 2** Antidepressant prescriptions per visit and per patient, 2005–2015.

organisational support and intensity of collaborative work after the introduction of the NASF programme. In stage 1, the matrix support had a dedicated manager offering on-site support to clinical integration, mediation of administrative problems and feedback about outcomes, for example, waiting times. In stage 2, the institutional support was assigned to overwhelmed middle managers who were in charge of several programmes and only able to provide routine administrative supervision.

Organisational support for integration including facilitation of meetings, development of local guidelines, provision of training, supervision and feedback is associated with better staff engagement, change management and sustainability of the collaborative care.<sup>10 11</sup> Conversely, weak local agreements and inconsistent guidance over time have been identified as barriers to implementation of matrix support in Brazil,<sup>38</sup> as well as of collaborative care in the USA.<sup>39</sup> Only 22% of PC teams in Brazil



**Figure 3** Proportion of each antidepressant class (tricyclics and selective serotonin reuptake inhibitors (SSRIs)) prescribed per visit and per year, 2005–2015.

reported receiving any management support to implement matrix support.<sup>16</sup> The broader scope of the matrix support teams in stage 2 (NASF teams) also implied more administrative complexity and competing demands to the PC teams, potentially reducing the opportunities for clinical collaboration between MH and PC teams. This is consistent with a previous study that evaluated the effects of a mental health training intervention in four Brazilian cities and suggested overload of PC teams with competing health problems as a possible explanation for reduced detection and treatment of mental disorders.<sup>40</sup>

### Study limitations

This study had some limitations. First, the EMR registry provided no symptoms data; therefore, clinical outcomes were not assessed. However, antidepressant prescriptions have been previously used as a proxy of clinical outcomes in collaborative care for depression.<sup>6,7</sup> Second, data on referrals to MH professionals, or concurrent care provided by them, was limited; it was not possible to assess continuity of care. Therefore, we could not compare our findings with previous studies that suggest positive effects of matrix support interventions and the NASF programme in process outcomes like quality of referrals and communication between distinct providers.<sup>14,15</sup> Third, the detection measures did not accurately express the incidence or prevalence of mental disorders, but rather estimates of care provision. However, previous research supports the use of a combination of diagnostic codes and antidepressant prescriptions as an indicator of access to treatment.<sup>29</sup> Fourth, the treatment measures did not allow for any assessment of the quality of treatments in terms of dose, duration or patients' adherence. In addition, there were no EMR data on the prescription of benzodiazepines due to local health legislation that requires such drugs to be prescribed only on paper. This prevented cross-checking of changes in prescription patterns; for example, whether the increased antidepressant prescription was accompanied by reduction of benzodiazepines. Fifth, the degree of matrix support implementation possibly varied among the clinics and over time, and an analysis of such variation would add relevant information to the aggregated data; however, such assessment was not possible based on the EMR data and would request other research designs. Sixth, it is possible that some diagnoses and treatments were inaccurately recorded or missing, and that patients who left the cohort during the study may have been systematically different from those who continued to attend primary care, which could have biased results. In particular, changes in the accuracy and completeness of recorded diagnoses and treatments would be most likely to have biased our findings if they changed over time. Lastly, this was an observational study, which allows very limited causal inference about the intervention, for several reasons. Because EMRs were introduced at the same time as the matrix support intervention, we could not use these data to compare trends in diagnosis and prescribing before and after the intervention was

introduced but could only compare two stages of the intervention having different intensities. It is possible that the changes observed during stage 1 might have happened even without the intervention because of other influences. Similarly, the changes in outcomes from stage 1 to stage 2 might also have been caused by other factors, that is, by unmeasured time-varying confounding variables. The only potential confounders that we were able to control for were age and sex, and it is possible that other unmeasured variables such as socioeconomic factors or comorbidities might have confounded our results, especially if these changed over time. Differences in the characteristics of the health centres included in the study might also have biased the results. However, a huge dataset of routine medical care was interrogated, which showed temporal trends consistent with the aims of the intervention, thereby providing a basis for effectiveness studies.

### Implications for practice and research

The positive outcomes of stage 1 suggest that the matrix support intervention may increase access to treatments when implemented with adequate on-site support to clinical integration. In this study's setting, the support to integration was provided by one full-time mental health worker for 50 PC practices, what is likely to be feasible in other primary care settings. The inconsistent results of stage 2 stress the need for a better understanding of how this programme is affected by variations in administrative support and by competing demands to the primary care teams. These conditions are the rule in real-world primary care settings in which several programmes need to converge to provide patient-centred care and deal with multi-comorbidity. In particular, there is a need to better understand the specific contribution of supportive strategies, for example, on-site supervision; intervention components, for example, regular meetings; and other contextual factors, for example, competing programmes and lack of time of the PC teams to the matrix support outcomes. The use of routinely collected data to evaluate such experiences should be improved and encouraged, including the assessment of non-pharmacological components, for example, psychological therapies, and system-level effects, for example, continuity of care. Future research should use experimental or quasi-experimental designs to assess clinical outcomes of the matrix support (eg, depression symptoms) across sites with distinct levels and modalities of matrix support, for example, mental health-only versus broader multi-professional teams; and across distinct groups of disorders like psychotic and common mental disorders.

### CONCLUSION

This was the first study to show a positive association between implementation of the matrix support intervention and improved detection and treatment of mental disorders in primary care, in particular anxiety and

depressive disorders. Our findings suggest that the effects of matrix support in mental health care may be favoured by on-site organisational support to the clinical integration between MH and PC workers. Conversely, competing demands to PCPs and reduced opportunities for clinical integration may reduce the effects of matrix support in mental health treatment provision.

**Twitter** Sonia Saraiva @SoniaSaraiva

**Acknowledgements** We are grateful to all health professionals of the Municipal Secretary of Health of Florianópolis who contributed to the development of the matrix support intervention described in this study and to the managers who supported its implementation.

**Contributors** SS conceived and designed the study and wrote the first draft of the paper. MB analysed the data. MA extracted the data from the institutional database. AL contributed to the conception and design of the study. All authors contributed intellectual content, edited the manuscript and approved the final version for submission.

**Funding** The authors have not declared a specific grant for this research from any funding agency in the public, commercial or not-for-profit sectors.

**Competing interests** SS is an ex-employee of the Municipal Secretary of Health of Florianópolis, Brazil.

**Patient consent for publication** Not required.

**Ethics approval** The study was approved by the Research Committee of the Municipal Secretary of Health of Florianópolis and by the Brazilian National Research Ethics Committee (reference number 25748313.7.0000.0118).

**Provenance and peer review** Not commissioned; externally peer reviewed.

**Data availability statement** Data may be obtained from a third party and are not publicly available. The secondary and anonymised data used in this study were extracted from the electronic medical records database of the host institution and consisted of demographic information, diagnoses and drug prescriptions routinely recorded by doctors in the electronic medical registry of Florianópolis, Brazil. The authors obtained authorisation of its use only for the purposes of this study. The data may be available on request for use in other studies from the Municipal Secretary of Health of Florianópolis, Brazil (gabinetesmsfpolis@gmail.com).

**Open access** This is an open access article distributed in accordance with the Creative Commons Attribution Non Commercial (CC BY-NC 4.0) license, which permits others to distribute, remix, adapt, build upon this work non-commercially, and license their derivative works on different terms, provided the original work is properly cited, appropriate credit is given, any changes made indicated, and the use is non-commercial. See: <http://creativecommons.org/licenses/by-nc/4.0/>.

#### ORCID iD

Sonia Saraiva <http://orcid.org/0000-0002-2305-9246>

#### REFERENCES

- World Health Organization. Mental health action plan 2013–2020. *WHO Libr Cat Data* 2013;1–44.
- Kessler RC, Aguilar-Gaxiola S, Alonso J, *et al*. The global burden of mental disorders: an update from the WHO World Mental Health (WMH) Surveys. *Epidemiol Psychiatr Soc* 2009;18:23–33.
- Andrade LH, Wang Y-P, Andreoni S, *et al*. Mental disorders in megacities: findings from the São Paulo megacity mental health survey, Brazil. *PLoS One* 2012;7:e31879.
- Fortes S, Lopes CS, Villano LAB, *et al*. Common mental disorders in Petrópolis-RJ: a challenge to integrate mental health into primary care strategies. *Braz J Psychiatry* 2011;33:150–6.
- Bower P, Gilbody S. Managing common mental health disorders in primary care: conceptual models and evidence base. *BMJ* 2005;330:839–42.
- Archer J, Bower P, Gilbody S, *et al*. Collaborative care for depression and anxiety problems. *Cochrane Database Syst Rev* 2012;10:CD006525.
- Coventry PA, Hudson JL, Kontopantelis E, *et al*. Characteristics of effective collaborative care for treatment of depression: a systematic review and meta-regression of 74 randomised controlled trials. *PLoS One* 2014;9:e108114.
- Richards DA, Bower P, Chew-Graham C, *et al*. Clinical effectiveness and cost-effectiveness of collaborative care for depression in UK primary care (CADET): a cluster randomised controlled trial. *Health Technol Assess* 2016;20:1–192.
- Gunn J, Diggins J, Hegarty K, *et al*. A systematic review of complex system interventions designed to increase recovery from depression in primary care. *BMC Health Serv Res* 2006;6:88.
- Kelly BJ, Perkins DA, Fuller JD, *et al*. Shared care in mental illness: a rapid review to inform implementation. *Int J Ment Health Syst* 2011;5:31.
- Fuller JD, Perkins D, Parker S, *et al*. Building effective service linkages in primary mental health care: a narrative review part 2. *BMC Health Serv Res* 2011;11:66.
- Macinko J, Harris MJ. Brazil's family health strategy—delivering community-based primary care in a universal health system. *N Engl J Med* 2015;372:2177–81.
- De Oliveira MM, Campos GWdeS. Matrix support and institutional support: analyzing their construction. *Cien Saude Colet* 2015;20:229–38.
- Saraiva SAL, Zepeda J, Liria AF. [Components of matrix support and collaborative mental health care: a narrative review]. *Cien Saude Colet* 2020;25:553–65.
- Figueiredo MD, Campos RO. Saúde Mental na atenção básica à saúde de Campinas, SP: uma rede ou um emaranhado? *Ciênc. saúde coletiva* 2009;14:129–38.
- dos Santos AdeF, Machado ATGdaM, dos Reis CMR, *et al*. Institutional and matrix support and its relationship with primary healthcare. *Rev Saude Publica* 2015;49:1–7.
- IBGE—Instituto Brasileiro de Geografia e Estatística. Estimativas da população, 2019. Available: <https://www.ibge.gov.br/estatisticas/sociais/populacao/9103-estimativas-de-populacao.html?=&t=oque-e> [Accessed 14 Jun 2020].
- Tesser CD, Poli Neto P. Atenção especializada ambulatorial no Sistema Único de Saúde: para superar um vazio. *Cien Saude Colet* 2017;22:941–51.
- Giovanela L, de Mendonça MHM, de Almeida PF, *et al*. Family health: limits and possibilities for an integral primary care approach to health care in Brazil. *Cien Saude Colet* 2009;14:783–94.
- Saraiva S, Cremonese E. Implantação do modelo de apoio matricial em saúde mental no município de Florianópolis, SC. in: III Concurso nacional de experiências em saúde da família: trabalhos premiados. *Brasília: Brasil - Ministério da Saúde - SAS - DAB* 2008:37–48.
- Yapa HM, Bärnighausen T. Implementation science in resource-poor countries and communities. *Implementation Sci* 2018;13:1–13.
- Saraiva S, Zepeda J. Princípios do Apoio Matricial. In: Gusso G, Lopes J, Dias L, eds. *Tratado de Medicina de Família e Comunidade: princípios, formação e prática*. 2nd ed. Porto Alegre: Artmed, 2019.
- Hirdes A, Silva MK. Apoio matricial: um caminho para a integração saúde mental e atenção primária. *Saúde em Debate* 2014;38:582–92.
- Athié K, Menezes ALdoA, da Silva AM, *et al*. Perceptions of health managers and professionals about mental health and primary care integration in Rio de Janeiro: a mixed methods study. *BMC Health Serv Res* 2016;16:1–15.
- Baldwin DS, Anderson IM, Nutt DJ, *et al*. Evidence-based pharmacological treatment of anxiety disorders, post-traumatic stress disorder and obsessive-compulsive disorder: a revision of the 2005 guidelines from the British Association for Psychopharmacology. *J Psychopharmacol* 2014;28:403–39.
- Bernal JL, Cummins S, Gasparrini A. Interrupted time series regression for the evaluation of public health interventions: a tutorial. *Int J Epidemiol* 2017;46:348–55.
- Gonçalves DA, Mari JdeJ, Bower P, *et al*. Brazilian multicentre study of common mental disorders in primary care: rates and related social and demographic factors. *Cad Saude Publica* 2014;30:623–32.
- Wang PS, Aguilar-Gaxiola S, Alonso J, *et al*. Use of mental health services for anxiety, mood, and substance disorders in 17 countries in the who world mental health surveys. *Lancet* 2007;370:841–50.
- Joling KJ, van Marwijk HWJ, Piek E, *et al*. Do GPs' medical records demonstrate a good recognition of depression? a new perspective on case extraction. *J Affect Disord* 2011;133:522–7.
- Rait G, Walters K, Griffin M, *et al*. Recent trends in the incidence of recorded depression in primary care. *Br J Psychiatry* 2009;195:520–4.
- Borges TL, Hegadoren KM, Miasso AI. Transtornos mentais comuns e uso de psicofármacos em mulheres atendidas em unidades básicas de saúde em um centro urbano brasileiro. *Rev Panam Salud Publica* 2015;38:195–201.
- Cepoiu M, McCusker J, Cole MG, *et al*. Recognition of depression by non-psychiatric physicians—a systematic literature review and meta-analysis. *J Gen Intern Med* 2008;23:25–36.



- 33 Wittchen H-U, Mühlig S, Beesdo K, *et al.* Mental disorders in primary care. *Dialogues Clin Neurosci* 2003;5:115–28.
- 34 Ioannidis JPA. Effectiveness of antidepressants: an evidence myth constructed from a thousand randomized trials? *Philos Ethics Humanit Med* 2008;3:14–19.
- 35 Brunoni AR, Nunes MA, Figueiredo R, *et al.* Patterns of benzodiazepine and antidepressant use among middle-aged adults. The Brazilian longitudinal study of adult health (ELSA-Brasil). *J Affect Disord* 2013;151:71–7.
- 36 Piek E, van der Meer K, Hoogendijk WJG, *et al.* Most antidepressant use in primary care is justified; results of the Netherlands study of depression and anxiety. *PLoS One* 2011;6:e14784.
- 37 Hyde J, Calnan M, Prior L, *et al.* A qualitative study exploring how GPs decide to prescribe antidepressants. *Br J Gen Pract* 2005;55:755–62.
- 38 Hirdes A, Silva MKRda. Matrix support in mental health in primary health care: barriers and facilitating factors. *Estud psicol*. 2017;34:499–511.
- 39 Roy-Byrne P. Collaborative care at the crossroads. *Br J Psychiatry* 2013;203:86–7.
- 40 Gonçalves DA, Fortes S, Campos M, *et al.* Evaluation of a mental health training intervention for multidisciplinary teams in primary care in Brazil: a pre- and posttest study. *Gen Hosp Psychiatry* 2013;35:304–8.