

# **Impaired peripheral reaching and on-line corrections in patient DF: optic ataxia with visual form agnosia**

Stéphanie Rossit<sup>1</sup>, Monika Harvey<sup>2</sup>, Stephen H. Butler<sup>3</sup>, Larissa Szymanek<sup>2</sup>, Stéphanie Morand<sup>4</sup>, Simona Monaco<sup>5</sup> & Robert D. McIntosh<sup>6</sup>

<sup>1</sup>School of Psychology, University of East Anglia, Norwich, UK

<sup>2</sup>School of Psychology, University of Glasgow, Glasgow, UK

<sup>3</sup>Department of Psychology, University of Strathclyde, Glasgow, UK

<sup>4</sup>Institute of Neuroscience and Psychology, Glasgow, UK

<sup>5</sup>Center for Mind/Brain Sciences, University of Trento, Italy

<sup>6</sup>Human Cognitive Neuroscience, Psychology, University of Edinburgh, UK

## **Corresponding author:**

Stéphanie Rossit, School of Psychology, University of East Anglia, Norwich Research Park, Norwich NR4 7TJ, UK. Tel +44 (0)1603 591674. E-mail: S.Rossit@uea.ac.uk

## ABSTRACT

1  
2 An influential model of vision suggests the presence of two visual streams within the brain: a  
3  
4 dorsal occipito-parietal stream which mediates action and a ventral occipito-temporal stream  
5  
6 which mediates perception. One of the cornerstones of this model is DF, a patient with visual  
7  
8 form agnosia following bilateral ventral stream lesions. Despite her inability to identify and  
9  
10 distinguish visual stimuli, DF can still use visual information to control her hand actions  
11  
12 towards these stimuli. These observations have been widely interpreted as demonstrating a  
13  
14 double dissociation from optic ataxia, a condition observed after bilateral dorsal stream  
15  
16 damage in which patients are unable to act towards objects that they can recognize. In  
17  
18 Experiment 1, we investigated how patient DF performed on the classical diagnostic task for  
19  
20 optic ataxia, reaching in central and peripheral vision. We replicated recent findings that DF  
21  
22 is remarkably inaccurate when reaching to peripheral targets, but not when reaching in free  
23  
24 vision. In addition we present new evidence that her peripheral reaching errors follow the  
25  
26 optic ataxia pattern increasing with target eccentricity and being biased towards fixation. In  
27  
28 Experiments 2 and 3, for the first time we examined DF's on-line control of reaching using a  
29  
30 double-step paradigm in fixation-controlled and free-vision versions of the task. DF was  
31  
32 impaired when performing fast on-line corrections on all conditions tested, similarly to optic  
33  
34 ataxia patients. Our findings question the long-standing assumption that DF's dorsal visual  
35  
36 stream is functionally intact and that her on-line visuomotor control is spared. In contrast, in  
37  
38 addition to visual form agnosia, DF also has visuomotor symptoms of optic ataxia which are  
39  
40 most likely explained by bilateral damage to the superior parietal occipital cortex. We thus  
41  
42 conclude that **patient** DF can no longer be considered as an appropriate **single-case model** for  
43  
44 testing the neural basis of perception and action **dissociations**.  
45  
46  
47  
48  
49  
50  
51  
52  
53  
54  
55

## KEYWORDS

56 Perception-action model; dorsal visual stream; on-line corrections; patient DF; SPOC  
57  
58  
59  
60  
61  
62  
63  
64  
65

## 1. Introduction

1  
2 According to the influential perception-action model (Goodale & Milner, 1992; Milner &  
3  
4 Goodale, 1995, 2006) the two cortical streams of visual processing are specialised for distinct  
5  
6 behavioural functions: the dorsal (occipito-parietal) stream supports the visual control of  
7  
8 actions, and the ventral (occipito-temporal) stream mediates vision for perception. Over the  
9  
10 last 25 years this model has received strong support from monkey neurophysiology,  
11  
12 neuroimaging and behavioural experiments in neurologically intact participants (Milner &  
13  
14 Goodale, 2008; Goodale, 2011, 2014); but the most widely influential evidence for its key  
15  
16 assertions comes from reported perception and action dissociations in neurological patients  
17  
18 (Milner et al., 1991; Goodale et al., 1991; Goodale & Milner, 1992).  
19  
20  
21  
22  
23

24           DF is an extensively-studied patient who acquired profound visual form agnosia  
25  
26 following bilateral ventral stream damage sustained in a near-fatal episode of carbon  
27  
28 monoxide poisoning (Milner et al., 1991). Despite her inability to identify and distinguish  
29  
30 visual stimuli, DF could still use visual information to control her hand actions towards these  
31  
32 stimuli (Milner et al., 1991; Goodale et al., 1991; Goodale et al., 1994). While her perceptual  
33  
34 deficits were directly linked to extensive bilateral damage to her ventral stream, her spared  
35  
36 visuomotor skills were attributed to an intact dorsal stream (Milner et al., 1991; Goodale et  
37  
38 al., 1991; Goodale et al., 1994; James et al., 2003). Consistent with this picture, a  
39  
40 complementary dissociation was claimed for patients with dorsal stream lesions and optic  
41  
42 ataxia, who were impaired in action but had intact perceptual abilities (Rossetti, Pisella &  
43  
44 Vighetto, 2003; Rossetti et al., 2005; Perenin & Vighetto, 1988; Karnath & Perenin, 2005).  
45  
46 These contrasting patterns have been widely interpreted as a double dissociation between  
47  
48 visual form agnosia (DF) and optic ataxia (e.g., Goodale & Milner, 1992; Milner & Goodale,  
49  
50 1995, 2006; Rossetti, 1998).  
51  
52  
53  
54  
55  
56  
57  
58  
59  
60  
61  
62  
63  
64  
65

1  
2  
3  
4  
5  
6  
7  
8  
9  
10  
11  
12  
13  
14  
15  
16  
17  
18  
19  
20  
21  
22  
23  
24  
25  
26  
27  
28  
29  
30  
31  
32  
33  
However, in recent years, the evidential basis for this double dissociation has been questioned. Firstly, it has been pointed out that the behavioural evidence for a double-dissociation is, at best incomplete, since the two patient groups (visual form agnosia and optic ataxia) have not been tested under appropriately matched conditions (Rossetti, Pisella & Vighetto, 2003; Pisella et al., 2006). Pisella and colleagues (2006) emphasised that the visuomotor deficits in optic ataxia are generally restricted to peripheral vision, with performance near-normal in central vision; however, the sparing of perceptual functions in these patients had been shown mainly in central vision. **When** more specific assessments of perception in peripheral vision were made, there was evidence for significant deficiencies in optic ataxic patients (Michel & Henaff, 2004; Perenin & Vighetto, 1988; Pisella et al., 2009; Rossetti et al., 2005). These perceptual deficiencies are now widely accepted, though it is still unclear whether they are secondary to problems orienting attention toward the affected region of space (Blangero et al., 2010; McIntosh et al., 2011; Michel & Henaff, 2004; Pisella et al., 2009; Striemer et al., 2007, 2009).

34  
35  
36  
37  
38  
39  
40  
41  
42  
43  
44  
45  
46  
47  
48  
49  
50  
51  
52  
53  
54  
55  
56  
57  
58  
59  
60  
61  
62  
63  
64  
65  
In visual form agnosia (represented chiefly by patient DF), the common contrast has been done between impaired perception and preserved action in central vision. In fact, the evidence on DF's visuomotor guidance to peripheral visual targets is limited to one brief report within a book chapter (Milner, Dijkerman & Carey, 1999), describing a task that "*required DF to make manual pointing responses towards targets presented at eight different locations... in the frontal plane of the subject*" (p.447). Target locations were not further specified, and the report did not state whether and how fixation was controlled, nor for how long were the LED targets lit. Data analysis was via a graphical comparison of DF's mean absolute error (across all locations) to three control subjects. This experiment has not been formally reported, although the data figure has been reproduced at least twice (Figure 14.4, Carey, 2010; Figure 2, Milner & Goodale, 2008). So although the figure did not suggest any

1  
2  
3  
4  
5  
6  
7  
8  
9  
10  
11  
12  
13  
14  
15  
16  
17  
18  
19  
20  
21  
22  
23  
24  
25  
26  
27  
28  
29  
30  
31  
32  
33  
34  
35  
36  
37  
38  
39  
40  
41  
42  
43  
44  
45  
46  
47  
48  
49  
50  
51  
52  
53  
54  
55  
56  
57  
58  
59  
60  
61  
62  
63  
64  
65

problem with immediate pointing to peripheral targets (albeit DF's mean error is marginally higher than in controls), the issue clearly merited further study, especially given the theoretical importance of the proposed double-dissociation with optic-ataxia.

To fill this gap, Hesse, Ball & Schenk (2012, 2014) investigated DF's performance in central and peripheral vision in more detail, studying grip-scaling in grasping and accuracy in pointing. Surprisingly, rather than showing the expected preservation across the visual field, DF's pattern matched that found in optic ataxia, with good performance when free vision was allowed, but impaired grip-scaling and pointing accuracy for peripheral targets when fixation was controlled. Although not formally analysed, the general character of the impairment was also similar to optic ataxia, in that the grasp tended to be uniformly over-scaled, and pointing in either hemifield erred toward fixation, increasing in magnitude with target eccentricity (across the two studies, targets from 4° to 18.4° were tested). The second of these studies showed that DF's pointing impairment affected both hands, as well as both visual fields (Hesse et al., 2014).

Hesse and colleagues entertained two main possibilities to explain these unexpected facts. The first is that visuomotor deficits resembling optic ataxia can arise from the ventral stream damage that has been emphasised in case descriptions of DF. The second is that the resemblance is not coincidental, and that DF actually has **bilateral** optic ataxia, in addition to visual form agnosia, due to damage to her dorsal stream bilaterally. This second account would be consistent with the typically diffuse consequences of carbon monoxide intoxication, and gains considerable plausibility from a close reading of the brain imaging findings in DF. Milner et al. (1991) indeed noted, at one year post-accident, bilateral damage in DF's medial parieto-occipital cortex, though James et al's well-cited fMRI study (2003) reported only a small lesion in the left posterior parietal cortex (see also Steeves et al., 2006 and Cavina-Pratesi et al., 2010a,b). The most recent MRI study has confirmed that DF's cortical thickness

1 is considerably reduced in both left and right intraparietal and parieto-occipital sulci (Bridge  
2 et al., 2013).  
3

4  
5 In James et al's functional data, the only dorsal stream region robustly and  
6  
7 specifically active during grasping, compared with reaching, with the dominant (right) hand  
8  
9 was the right anterior intraparietal sulcus (aIPS). This is consistent with a key role for aIPS in  
10  
11 grasping in both humans and monkeys (Binkofski et al., 1998; Culham et al., 2003; Frey et  
12  
13 al., 2005; Begliomini et al., 2007a,b; Cavina-Pratesi et al., 2010c; Monaco et al., 2014, 2015;  
14  
15 Murata et al., 2000; Gardner et al., 2007; Davare et al., 2007). James et al. (2003) thus  
16  
17 concluded that DF's dorsal stream was functioning well, explaining her spared visuomotor  
18  
19 skills. Nevertheless, DF's right-lateralized activation contrasts with the usual left-dominant  
20  
21 activation for right hand grasping reported in healthy participants (Beurze et al., 2007; Stark  
22  
23 & Zohary, 2008; Gallivan et al., 2013; Rossit et al., 2013). Moreover, unlike controls, DF  
24  
25 showed no significant activation, during reaching or grasping, in either left or right superior  
26  
27 parieto-occipital cortex (SPOC) (James et al., 2003). SPOC has repeatedly been shown to be  
28  
29 involved in visuomotor control, especially in peripheral vision, in humans and monkeys  
30  
31 (Astafiev et al., 2003; Connolly, Andersen & Goodale, 2003; Prado et al., 2005; Filimon et  
32  
33 al., 2009; Cavina-Pratesi et al., 2010c; Gallivan et al., 2011; Monaco et al., 2011, 2015;  
34  
35 Rossit et al., 2013; Martin et al., 2015; Fattori et al., 2001; 2009, 2010; Breveglieri et al.,  
36  
37 2016), and damage to this region provokes visuomotor deficits including peripheral  
38  
39 misreaching, the core sign of optic ataxia (Battaglini et al., 2002; Karnath & Perenin, 2005;  
40  
41 Pisella et al., 2009; Rossit et al., 2009; Hwang et al., 2012; Anderson et al., 2014) and even  
42  
43 'magnetic misreaching' toward the point of fixation (Buxbaum & Costlett, 1997; Carey,  
44  
45 Coleman & Della Sala, 1997; Buxbaum & Costlett, 1998; Jackson, Newport, Mort & Husain,  
46  
47 2005; Jackson et al., 2009).  
48  
49  
50  
51  
52  
53  
54  
55  
56  
57  
58  
59  
60  
61  
62  
63  
64  
65

1 The idea of bilateral damage to the parieto-occipital cortex, with functional  
2 impairment of SPOC bilaterally (and, perhaps, aIPS in the left hemisphere) could very well  
3 explain why Hesse and colleagues (2012, 2014) found DF to show classic signs of optic  
4 ataxia. It is less clear why Hesse and colleagues' data were so starkly at odds with the prior  
5 report of accurate peripheral pointing in DF (Milner, Dijkerman & Carey, 1999); but the  
6 brevity of that prior report of peripheral pointing precludes any meaningful comparison of the  
7 two datasets. Whitwell, Milner and Goodale (2014) recently suggested that DF's dorsal  
8 stream atrophy, and by implication her visuomotor impairment, may have increased since the  
9 first scans, but this remains to be confirmed.

10  
11  
12  
13  
14  
15  
16  
17  
18  
19  
20  
21  
22       Regardless of whether DF's dorsal stream lesions have progressed over time, it has  
23 been noted that her visuomotor performance is not entirely normal, even in free vision, and  
24 even in the original experimental reports (Goodale et al., 1991; Milner et al., 1991; Goodale,  
25 Meenan et al., 1994). These classic reports were based on clear qualitative contrasts between  
26 DF and healthy controls, but statistical methods for finer-grained single-case analyses have  
27 since been developed (Crawford & Garthwaite, 2005, 2006; see McIntosh & Brooks, 2011,  
28 for an overview). Himmelbach, Boehme and Karnath (2012) applied these newer methods to  
29 the archived data from some of DF's seminal studies, testing a larger sample of control  
30 subjects (n=20) on the original tasks used. They found that DF's grip scaling for rectangular  
31 objects was within normal limits, but that she had significant visuomotor deficits when  
32 grasping irregular shapes, or posting a card through an oriented slot. Her visuomotor  
33 performance was still *differentially* preserved, relative to her performance on perceptual  
34 tasks. This re-analysis recasts the seminal observations of patient DF as showing a strong,  
35 rather than a classical, dissociation between perception and action in central vision  
36 (Crawford, Garthwaite, & Gray, 2003; see also Whitwell, Milner & Goodale, 2014).

1  
2  
3  
4  
5  
6  
7  
8  
9  
10  
11  
12  
13  
14  
15  
16  
17  
18  
19  
20  
21  
22  
23  
24  
25  
26  
27  
28  
29  
30  
31  
32  
33  
34  
35  
36  
37  
38  
39  
40  
41  
42  
43  
44  
45  
46  
47  
48  
49  
50  
51  
52  
53  
54  
55  
56  
57  
58  
59  
60  
61  
62  
63  
64  
65

It is also now well-recognised that DF encounters problems in a variety of complex visuomotor tasks, and that her control of even rudimentary actions may be supported by impoverished visual information (see Schenk & McIntosh, 2010, for a review). Schenk and McIntosh interpreted these patterns as evidence of an intimate ventral stream involvement in action, with the relative preservation of DF's basic visuomotor skills attesting to an impressive robustness of the system in adapting to the loss of this contribution (see also Schenk, 2010). However, in light of recent data, it now seems possible that at least some of her visuomotor abnormalities in central vision may be directly due to dorsal stream damage.

Re-inspection of kinematic data from DF, in a variety of reaching and grasping tasks reveals that, even when she performs a task well, she tends to be slow, with low peak velocities, and movement times up to twice as long as those of controls (Carey, Dijkerman & Milner, 2009; Dijkerman et al., 2009; Hesse et al., 2012; Dijkerman, Milner & Carey, 1996; Goodale et al., 1994; Marotta, Behrmann & Goodale, 1997; McIntosh et al., 2004; Mon-Williams, McIntosh & Milner, 2001; Rice et al., 2006; Milner, Dijkerman & Carey, 1999). Rice et al. (2006) reported that patients DF and SB (another visual form agnostic patient with large bilateral lesions) moved much more slowly than controls in a perceptually-guided task, but that DF (not SB) was also slow in the direct reaching task. This suggests that DF's slowing is not a generalised effect of brain damage, but may be a more specific consequence of, or compensation for, damage to the visuomotor network. In this respect, she is also similar to patients with optic ataxia, in whom relatively good visuomotor guidance in central vision is nonetheless associated with slowed execution (Gréa et al., 2002; Rice et al., 2008; Schindler et al., 2004).

A remarkable picture is thus building in which patient DF, the epitome of ventral stream perceptual problems, may also have optic ataxia, the cardinal dorsal stream disorder. Hesse and colleagues (2012, 2014) have so far shown that she misreaches and shows



impaired grip-scaling in peripheral vision, with much better performance in central vision.

Here we expand these findings by analysing DF's *directional* pointing errors to targets in free and peripheral vision, to test whether DF's misreaching is significantly biased towards fixation as reported for optic ataxia (Blangero et al., 2010; Milner et al., 1999, 2003; Rossetti et al., 2005). In experiments 2 and 3 we investigated DF's ability to perform on-line corrections of reaching in fixation-controlled and free-vision conditions. On-line correction is typically impaired in optic ataxia (Blangero et al., 2010; Gréa et al., 2002; McIntosh et al., 2011; Pisella et al., 2000), and has been proposed by some as the most specific function of dorsal stream control (Pisella et al., 2000; Glover, 2003; Schenk & McIntosh, 2010).

## 2. Experiment 1: Reaching to stationary targets in free vs. peripheral vision

### 2.1. Methods

#### 2.1.1 Participants

**Patient DF:** A right-handed female 56-year-old patient (DF), who after carbon monoxide poisoning in 1988 acquired visual form agnosia (Milner et al., 1991), participated in the experiment (tested at the University of Glasgow in 2010). Previous testing (Milner et al., 1991; Humphrey et al., 1994) demonstrated that DF is severely impaired in visual shape, orientation and distance discriminations leading to poor visual object recognition, but shows preserved colour, luminance and texture perception (Milner et al., 1991; Milner & Goodale, 1995; 2006). MRI scans of patient DF revealed large bilateral lesions in the lateral occipital-cortex, but leaving V1 and fusiform gyrus largely intact, and a small lesion in the left posterior parietal cortex (James et al., 2003; but see introduction for a fuller discussion of dorsal stream involvement). An in-house computerized static perimetry test (up to 22° of eccentricity; Rossit et al., 2009) revealed that DF was able to detect visual stimuli above chance in the upper visual field, but similarly to previous studies (e.g. Hesse, Ball & Schenk,

1  
2  
3  
4  
5  
6  
7  
8  
9  
10  
11  
12  
13  
14  
15  
16  
17  
18  
19  
20  
21  
22  
23  
24  
25  
26  
27  
28  
29  
30  
31  
32  
33  
34  
35  
36  
37  
38  
39  
40  
41  
42  
43  
44  
45  
46  
47  
48  
49  
50  
51  
52  
53  
54  
55  
56  
57  
58  
59  
60  
61  
62  
63  
64  
65

2012, 2014; Bridge et al., 2013) showed a lower right quadrantanopia when tested below 11° of visual eccentricity. This finding is also consistent with the report of a lesion to the anterior portion of V1 in the left hemisphere (Milner et al., 1991; Bridge et al., 2013)

**Control group:** Six age-matched right-handed healthy control participants (mean age: 53.5 years, SD 8.3; age range: 45-63 years; 2 females) were tested. All participants had normal or corrected-to-normal visual acuity and no history of neurological problems. All experiments were approved by the local ethical committee and all participants (including patient DF) gave informed consent prior to the study.

### 2.1.2. Apparatus and stimuli

Targets and fixation were 7mm circles (0.7° of visual angle) back-projected (HITACHI CP-X345 Multimedia LCD projector, refresh rate of 60Hz) onto a horizontal Perspex box (77cm width/97cm length/30cm height) via a reflection mirror (3mm thick, 60cm x 60cm). The box was placed on top of a wooden table at which the subjects were seated. The targets were red and presented at -20°, -15°, -10°, 0°, 10°, 15° and 20° of visual eccentricity. The fixation circle was green and placed 2.6° above the central target location (allowing all targets to be presented outside of DF's scotoma). The room was slightly darkened so that the targets were clearly visible, but the participant's hands were visible throughout the movement.

Pointing responses were recorded by sampling the 3D position of a magnetic marker, attached to the tip of the right index finger, at a rate of 108Hz, using an electro-magnetic motion-analysis system (Minibird, Ascension Technology Inc.). Experiments were programmed in LabVIEW (National Instruments). The electrooculogram (EOG) was continuously recorded from electrodes placed above and below the left eye (vertical EOG) and from electrodes placed on the left and right outer canthi (horizontal EOG) using a BIOSEMI Active-Two amplifier system. Two additional electrodes (Common Mode Sense [CMS] active electrodes and Driven Right Leg [Driven Right Leg] were placed within a

1 standard BioSemi head cap [see [www.biosemi/faq/cms&drl.htm](http://www.biosemi/faq/cms&drl.htm) for details]). The data were  
2 recorded at 2048 Hz.  
3

### 4 *2.1.3. Procedure*

5  
6  
7 Participants sat in an adjustable chair and began each trial with their right index-finger resting  
8  
9 on a start button located approximately 35 cm from the middle target and aligned with their  
10  
11 sagittal midline. Two reaching conditions (separate blocks of periphery and free vision) were  
12  
13 completed using the right index-finger. Block order was the same across participants so that  
14  
15 controls performed the experiment in the same order as DF. In the first block, participants  
16  
17 were asked to point to the target whilst maintaining fixation on the central light (peripheral  
18  
19 vision). In the second block, participants were asked to point to the target but were allowed to  
20  
21 move their eyes (free vision). Target onset was triggered by start button press and the target  
22  
23 remained visible until the end of the trial. The green fixation circle was displayed  
24  
25 continuously throughout the experiment. Each target was presented 6 times, in randomly-  
26  
27 shuffled order, resulting in a total of 42 trials per block (plus 5 practice trials). At the end of  
28  
29 these tasks, calibration coordinates were obtained by continuous presentation of each target  
30  
31 position, one by one, allowing the participants to adjust their terminal fingertip position until  
32  
33 they felt that they had perfectly occluded the target. There were 3 calibration trials for each  
34  
35 target and start position.  
36  
37  
38  
39  
40  
41  
42

43 After the reaching tasks, participants performed a perceptual target detection task (in  
44  
45 peripheral vision only) using the same set-up. Each of the targets was presented 10 times, in  
46  
47 randomly-shuffled order, and participants were asked to press the button upon target  
48  
49 detection whilst maintaining fixation. To control for response biases, 20 catch trials in which  
50  
51 no target appeared were randomly intermingled.  
52  
53  
54

### 55 *2.1.4. Data analysis*

56  
57  
58  
59  
60  
61  
62  
63  
64  
65

1 The EOG data were analysed using BESA ([www.besa.de](http://www.besa.de)) and customized MATLAB  
2 scripts. The continuous data were band-pass filtered (0.01 Hz - 40 Hz). The EOG epoch  
3  
4 started 200 ms before trial onset and lasted 2200 ms. The 200 ms prior to trial onset served as  
5  
6 the baseline. Visual inspection of the epoched EOG data demonstrated target-related  
7  
8 horizontal EOG activity in the free movement condition that was related to target location for  
9  
10 the control subjects. For the fixation condition both controls and patient DF showed greatly  
11  
12 reduced horizontal EOG activity. Thus, we are confident that participants were able to follow  
13  
14 task instructions. Individual trials with clear target related horizontal EOG activity between  
15  
16 trial onset and response execution within the fixation condition, were visually identified and  
17  
18 removed from the subsequent movement data analysis. This resulted in the removal of 2% of  
19  
20 trials for controls whereas no trials were removed for patient DF, as she was able to maintain  
21  
22 fixation throughout. The remaining reaching data were filtered by a dual-pass through a  
23  
24 second-order Butterworth filter with a cut-off frequency of 10 Hz, and analysed using  
25  
26 customized software written in LabVIEW (National Instruments). For the reaching task we  
27  
28 computed directional error (signed angular deviation of the movement endpoint relative to the  
29  
30 ideal reach), and for the detection task the percentage correct and reaction time (RT).  
31  
32  
33  
34  
35  
36  
37  
38

39 DF's performance was compared to that of the controls using modified t-tests  
40  
41 developed for single-case studies (Crawford & Garthwaite, 2002). The revised standardized  
42  
43 difference test (RSdT; Crawford & Garthwaite, 2005) was used to compare between-task  
44  
45 differences in DF and controls. One-tailed tests were used for tests in which there was an  
46  
47 unambiguous directional prediction, but not when impaired performance could differ in either  
48  
49 direction from controls.  
50  
51  
52  
53  
54  
55  
56  
57  
58  
59  
60  
61  
62  
63  
64  
65

## 2.2. Results

In free vision, the reaches of patient DF had similar end-point coordinates to those of control participants (Fig. 1). Modified t-tests on directional error (Fig. 2) found no abnormality in DF at any target position (all two-tailed  $ps > 0.1$ ).

\*\*\*\*\*

Figure 1 about here

\*\*\*\*\*

However, DF was severely impaired when reaching to targets in peripheral vision. There was less differentiation of target eccentricity in DF than in controls (Fig.1); she presented a bias towards the midline/fixation (Fig.1); she undershot target position (especially when reaching to rightward targets; Fig.1); and her errors increased dramatically with target eccentricity (Fig.2). Modified t-tests on directional error confirmed that, when compared to controls DF significantly undershot target positions (i.e., had a bias towards fixation) in the right visual field ( $20^\circ$ :  $t = -11.3$ , two-tailed  $p < 0.001$ ;  $15^\circ$ :  $t = -10.4$ , two-tailed  $p < 0.001$ ;  $10^\circ$ :  $t = 5.3$ , two-tailed  $p = 0.003$ ) and for the  $-20^\circ$  and  $-15^\circ$  targets in the left visual field ( $-20^\circ$ :  $t = 3.8$ , two-tailed  $p = 0.01$ ;  $-15^\circ$ :  $t = 2.9$ , two-tailed  $p = 0.03$ ), though not for the  $-10^\circ$  left target ( $t = 2.2$ , two-tailed  $p = 0.08$ ). Her errors for the central ( $0^\circ$ ) target were well within normal limits ( $t = 0.5$ , two-tailed  $p = 0.61$ ).

\*\*\*\*\*

Figure 2 about here

\*\*\*\*\*

1 To test the apparent dissociation between free vision and peripheral reaching, we  
2 applied the RSDT, using directional error averaged over all target positions, but excluding the  
3  
4 0° target. This confirmed that the difference in accuracy between free and peripheral reaching  
5  
6 was significantly larger in DF than in controls fulfilling the criteria for a classical dissociation  
7  
8 (mean difference DF = 3.6°; mean difference controls = 0.1°;  $t = 5.2$ , two-tailed  $p = 0.003$ ).  
9

10  
11 To investigate perceptual detection of targets in our stimulus set-up we tested DF and  
12 controls in an additional perceptual target detection task. The controls were at ceiling, being  
13  
14 able to detect all targets (100% correct in both target present and target absent trials). Patient  
15  
16 DF's performance was also very good with 100% correct in target absent trials (i.e., no false  
17  
18 positives) and when targets were presented at -15°, -10°, 15° and 20° of eccentricity. For -  
19  
20 20°, 0° and 10° targets her performance was 90% correct (i.e. she missed one trial per target  
21  
22 eccentricity). However, DF took significantly longer to detect all target positions when  
23  
24 compared to controls (-20°:  $t = 105.3$ , one-tailed  $p < 0.0001$ ; -15°:  $t = 27.4$ , one-tailed  $p <$   
25  
26 0.0001; -10°:  $t = 6.2$ , one-tailed  $p = 0.0008$ ; 0°:  $t = 39.1$ , one-tailed  $p < 0.0001$ ; 10°:  $t = 6.5$ ,  
27  
28 one-tailed  $p = 0.0006$ ; 15°:  $t = 3.8$ , one-tailed  $p = 0.0006$ ; 20°:  $t = 2.2$ , one-tailed  $p = 0.04$ ;  
29  
30 see Fig.2C). Nevertheless there was no obvious relationship between her ability to point to or  
31  
32 perceptually detect targets in peripheral vision. In particular, and as can be seen by  
33  
34 contrasting Figs.2B and 2C, while her pointing errors increased with target eccentricity, her  
35  
36 RT did not (if anything, it seemed to decrease) and while she was perfectly accurate in  
37  
38 pointing to the central (0°) target, she was significantly slow to detect it.  
39  
40  
41  
42  
43  
44  
45  
46  
47  
48  
49  
50

### 51 **2.3. Discussion**

52 In Experiment 1, we investigated how patient DF performed on the typical diagnostic task for  
53  
54 optic ataxia of reaching in central and peripheral vision. Consistent with the reports of Hesse,  
55  
56 Ball and Schenk (2012, 2014), she performed very well with free vision, but was dramatically  
57  
58  
59  
60  
61  
62  
63  
64  
65

1 impaired for peripheral targets. The difference between her central and peripheral reaching  
2 errors met formal criteria for a classical dissociation. We thus replicate the key finding of  
3 Hesse, Ball & Schenk (2012, 2014), that DF exhibits the core diagnostic symptom of optic  
4 ataxia (Perenin & Vighetto, 1988). In addition we show that her errors follow the pattern  
5 typical of optic ataxia, being significantly deviated towards fixation, and increasing with  
6 target eccentricity (Blangero et al., 2010; Perenin & Vighetto, 1988; Milner et al., 1999;  
7 2003; Rossetti et al., 2005). Misreaching was present in both visual fields (if anything, more  
8 severely on the right), consistent with bilateral thinning of the parieto-occipital cortex (Bridge  
9 et al., 2013), the cardinal area associated with this symptom (Karnath & Perenin, 2005). Our  
10 test session preceded that of Hesse, Ball & Schenk (2012), so we can confirm that this  
11 visuomotor impairment was already present in 2010. It may possibly have been present, but  
12 undetected, much earlier, given the mention of bilateral parieto-occipital lesions in a very  
13 early case report of patient DF (Milner et al., 1991).

14 DF was also impaired in our target detection task, showing abnormally slow RTs for  
15 all locations but one (the rightmost), which is hard to interpret. On the one hand, DF has  
16 profound perceptual problems, which might make the pattern unremarkable, although agnosic  
17 patients should be able to perform detection well. On the other hand, patients with optic  
18 ataxia also have deficits in detecting visual targets, especially in their ataxic field (Striemer et  
19 al., 2007, 2009; Pisella et al., 2007). As found for DF, slowed detection may not modulate  
20 with eccentricity in the same way as reaching errors do (Striemer et al., 2009). Thus DF's  
21 slowed *perceptual* detection may depend on her extensive damage to either or both the  
22 ventral and dorsal visual streams.

23 Misreaching to peripheral visual targets is the classic diagnostic sign of optic ataxia,  
24 but another common feature of the condition – when it has been tested – is an impaired  
25 ability to quickly correct reaching movements on-line (Blangero et al., 2010; Gréa et al.,  
26

1 2002; McIntosh et al., 2011; Pisella et al., 2000). This has typically been studied via ‘double-  
2 step’ reaching tasks, in which the target is displaced abruptly to a new location once the reach  
3 is underway. Healthy participants update their movement rapidly to track the displacement,  
4 reaccelerating within ~110 ms, and taking a distinguishable spatial path by about 200 ms  
5 (Brenner & Smeets 1997; Castiello, Paulignan & Jeannerod, 1991). This response is  
6 automatic, occurring without instruction (Day & Lyon, 2000; Pisella et al., 2000), without  
7 tapping cognitive resources (McIntosh, Mulroue & Brockmole, 2010), and without any  
8 necessary awareness of the target jump or the compensatory correction (Goodale, Pelisson &  
9 Prablanc, 1986; Pelisson et al. 1986). The fast automatic corrections depend on dorsal stream  
10 integrity, and are impaired in optic ataxia (although slower, conscious corrections may still be  
11 made; Pisella et al., 2000; Gréa et al., 2002; Blangero et al., 2010; McIntosh et al., 2011).  
12 Thus, in Experiment 2, we examined DF’s on-line corrections in a double-step reaching task,  
13 with controlled fixation, previously used for the single-case study of a patient (IG) with  
14 bilateral optic ataxia (McIntosh et al., 2011).  
15  
16  
17  
18  
19  
20  
21  
22  
23  
24  
25  
26  
27  
28  
29  
30  
31  
32  
33  
34  
35

### 36 **3. Experiment 2: On-line reaching correction, with fixation controlled**

#### 37 **3.1. Methods**

38  
39  
40  
41 The methods used for DF differed in one major design aspect from those used in McIntosh et  
42 al. (2011), having a reduced number of experimental conditions to focus on the question of  
43 interest, and in some more superficial details of apparatus used, as the original experiment,  
44 conducted at the University of Lyon, had to be recreated at the University of Edinburgh<sup>1</sup>. The  
45  
46  
47  
48  
49  
50

---

51  
52 <sup>1</sup> The apparatus used for DF differed from that used in the experiment of McIntosh et al  
53 (2011) in the following respects: stimuli were controlled via LabVIEW rather than  
54 Cambridge Research Systems Visual Stimulus Generator; stimuli were presented on a 17”  
55 LCD flatscreen, rather than a 21” CRT monitor (stimulus dimensions were unchanged);  
56  
57  
58  
59  
60  
61  
62  
63  
64  
65



1 methods reported here apply to the testing of patient DF, with methodological differences  
2 from the original study noted. The control data come from the original study reported by  
3  
4  
5 McIntosh et al (2011), as the methods were closely comparable.  
6

### 7 *3.1.1. Participants*

8  
9 **Patient DF** who suffers from visual form agnosia (see section 2.1.1 for details) performed  
10  
11 this experiment in 2008 (she was 54 years old at the time).  
12  
13

14 **Control group:** Eleven right-handed healthy controls were also tested (mean age:  
15 35.1, SD 9.2; age range: 25–52 years; 8 females). Because DF was at the upper end of the  
16  
17 control range of ages, age was used as a covariate in comparing DF’s performance to that of  
18  
19 controls (see *3.1.4. Data Analysis*). All control participants had normal or corrected to normal  
20  
21 visual acuity with no history of neurological conditions. All methods were approved by the  
22  
23 relevant local ethical committee and all participants (including patient DF) gave informed  
24  
25 verbal consent prior to the study.  
26  
27  
28  
29  
30

### 31 *3.1.2. Apparatus and stimuli*

32  
33 DF sat in darkness, 420 mm in front of a 17" CRT monitor (refresh rate 60 Hz), with her head  
34  
35 immobilised in a chin-rest. Throughout each trial, she fixated a 6 mm (0.8° visual angle) grey  
36  
37 cross, at the screen centre. Targets were 12.5 mm diameter (1.7° visual angle) white circles  
38  
39 which appeared either centrally or 65 mm (8.8° visual angle – just outside of paracentral  
40  
41 vision in near peripheral vision) to the left or right **in line with fixation and thus outside of**  
42  
43 **DF’s scotoma**. Reaching responses were recorded via an Optotrak Certus system (Northern  
44  
45 Digital Inc.), which sampled the 3D position of an infrared emitting diode, attached to the  
46  
47  
48  
49  
50  
51

---

52  
53 EOG, rather than a video-based eye-tracker, was used to monitor fixation; an Optotrak Certus  
54  
55 rather than Optotrak 3020 system was used for hand movement recording; and a simple  
56  
57 finger tap rather than a button press was used to respond in the perceptual discrimination task.  
58  
59  
60  
61  
62  
63  
64  
65

1 nail of the right index finger, at 200 Hz. In the perceptual task, an infrared emitting diode was  
2 attached to both the left and the right index fingernail, with finger position sampled at 200  
3 Hz. Throughout all trials in both tasks, horizontal eye movements were monitored using  
4 EOG, with a passive electrode placed on the outer canthus of each eye, and a reference  
5 electrode on the forehead. EOG voltage was sampled at 500 Hz, with sampling time-locked  
6 to hand movement recording via the Optotrak Data Acquisition Unit (ODAU).  
7  
8  
9

### 10 *3.1.3. Procedure<sup>2</sup>*

11 DF performed two tasks, reaching and perceptual discrimination, with reaching first. Prior to  
12 each task, a 20 second EOG calibration recording was made in which DF was required to  
13 follow a fixation cross, which jumped sequentially, approximately every 1-2 seconds between  
14 the three target positions.  
15  
16

17 In the reaching task, DF pressed a button in front of her, with her right index finger,  
18 and target 1 appeared at the screen centre. She was then required, in her own time, to initiate  
19 a fast forward-and-upward reach towards it (straight line distance 500 mm). Button release  
20 triggered the replacement of target 1 by target 2, which was identical to target 1, and either  
21 located centrally (static trials) or 65 mm to the left or right (jump trials). A pacing beep, 450  
22 ms after button release, encouraged DF to make fast movements, as she was instructed to try  
23  
24  
25  
26  
27  
28  
29  
30  
31  
32  
33  
34  
35  
36  
37  
38  
39  
40  
41  
42

---

43 <sup>2</sup> McIntosh et al (2011) conducted the reaching and perceptual tasks under three different  
44 blocked fixation conditions, in order to investigate some specific aspects of visual  
45 responsiveness in optic ataxia. Because these extended questions were of less relevance to  
46 DF, the present experiment used the central fixation blocks only. DF performed three blocks  
47 of the reaching task with central fixation, whereas controls performed two blocks in each of  
48 three fixation conditions. DF performed two blocks of the perceptual discrimination task with  
49 central fixation, whereas controls performed two blocks in each of three fixation conditions.  
50  
51  
52  
53  
54  
55  
56  
57  
58  
59  
60  
61  
62  
63  
64  
65

1 to complete the movement by the time of the beep. DF performed three blocks of 60 trials (40  
2 static, 10 jump left, 10 jump right, pseudo-randomly ordered).  
3

4 The perceptual discrimination task used the same set-up, except that DF's right and  
5 left index fingers were raised slightly above the table-top in front of her. The experimenter  
6 initiated onset of target 1, which was replaced by target 2 after 500 ms. DF discriminated the  
7 direction of the target jumps by tapping the table with the corresponding finger as soon as  
8 possible, withholding responses on static trials. Trials timed out after 2000 ms. There were  
9 two blocks of 45 trials (15 static, 15 jump left, 15 jump right, pseudo-randomly ordered).  
10  
11  
12  
13  
14  
15  
16  
17  
18

### 19 *3.1.4. Data analysis*

20 For monitoring of eye position, the raw EOG voltage data were filtered by a dual-pass  
21 through a second-order Butterworth filter with a cut-off frequency of 10Hz. The velocity of  
22 the EOG signal was computed for each sample. A threshold for saccade identification was  
23 determined manually from the calibration recording, as the smallest velocity value that  
24 cleanly separated saccades between target locations from inter-saccadic EOG velocity  
25 variation. In experimental trials, central fixation was deemed to have been broken on any trial  
26 in which the velocity exceeded this threshold value, with saccade onset time corresponding to  
27 the frame that the threshold was first exceeded. Fourteen trials (11 static and three jump  
28 trials) were removed for the reaching task, because a saccade was initiated before the end of  
29 the reach; eleven of these were in the first block, indicating that DF gained better control over  
30 her fixation as the task progressed. Five additional trials were lost to recording errors. The  
31 loss of 19 trials overall for DF was more than offset by the fact that she performed an extra  
32 block of trials (relative to controls), leaving 105 static, 29 jump left and 28 jump right trials  
33 for analysis. In the perceptual task, no saccades were detected that preceded the manual  
34 response, so no trials were removed.  
35  
36  
37  
38  
39  
40  
41  
42  
43  
44  
45  
46  
47  
48  
49  
50  
51  
52  
53  
54  
55  
56  
57  
58  
59  
60  
61  
62  
63  
64  
65

1 Kinematic data from reaching movements were filtered by a dual pass through a  
2 Butterworth filter with a cut-off of 10 Hz. Movement onset was determined using a velocity  
3 threshold of  $100 \text{ mm s}^{-1}$ , and movement offset using a threshold of  $50 \text{ mm s}^{-1}$ . The analysis  
4 of the spatial trajectory was performed by projecting the hand path onto the plane intersecting  
5 the start button and the three target locations, with its origin at the start button. A straight path  
6 from start button to the central target defined increasing depth displacement. Leftward lateral  
7 displacement was signed negatively, and rightward positively.

8  
9  
10  
11  
12  
13  
14  
15  
16  
17 The analysis of on-line corrections in individual jump trials was based upon  
18 deviations of the hand path from the average spatial path of the hand on static trials, using a  
19 bandwidth based upon the movement variability of control participants. First, the spatial  
20 trajectories for all static trials were normalised to 1 mm increments along the depth axis.  
21  
22 Second, for each participant, the average lateral coordinate and its standard deviation were  
23 calculated at each depth increment. Third, the average standard deviation was calculated  
24 across all control participants at each depth increment, and these were used to define standard  
25 cut-offs for all participants, including DF, for the purposes of classifying corrections in jump  
26 trials. Standard cut-offs were used so that the sensitivity of the analysis of corrections would  
27 be minimally influenced by individual differences in movement variability. At each depth  
28 increment, cut-offs were set at 2.81 average standard deviations either side of that  
29 participant's average hand path. For each jump trial, in each time frame, the movement was  
30 classed as corrected if it fell beyond the corresponding cut-off in the direction of the jump,  
31 being otherwise classed as uncorrected. Each comparison thus approximates a one-tailed  
32 comparison at  $\alpha \sim 0.0025$ , matching that applied by McIntosh et al (2011). The  
33 comparison made for the final frame of the movement defined the terminal correction status  
34 for each jump trial.

1 For the reaching task we extracted correction time (for corrected trials only) and  
2 directional error for all trial types and compiled a temporal profile of current percentage of  
3 corrections for left and right target shifts. We did not analyse RT for the reaching task of this  
4 experiment because here participants were instructed to release a button at their own pace  
5 with no speed RT requirement. For the perceptual task, percentage correct and RT were  
6 computed for left and right jumps. DF's performance was compared to that of the controls,  
7 with age-entered as a covariate, using Bayesian tests for deficit in the presence of covariates  
8 (Crawford, Garthwaite and Ryan, 2011). One-tailed tests were used for tests in which there  
9 was an unambiguous directional prediction, but not when impaired performance could differ  
10 in either direction from controls.  
11  
12  
13  
14  
15  
16  
17  
18  
19  
20  
21  
22  
23  
24  
25  
26

### 27 **3.2. Results**

28 DF presented a similar number of terminal corrections to controls with 79% of movements  
29 corrected to left jumps and 82% to right target jumps (left jumps: control mean = 86%, SD =  
30 35%; right jumps: control mean = 92%, SD = 28%). However, her movement time was  
31 almost double that of controls for static trials (DF = 809.7; controls mean = 462.7, SD = 70.4;  
32 Bayesian one-tailed  $p = 0.0005$ , Z-CCC = 6.29), for left jumps (DF = 862.8; controls mean =  
33 502.3, SD = 71.3; Bayesian one-tailed  $p = 0.0004$ , Z-CCC = 6.38), and for right jumps (DF =  
34 733.2; controls mean = 443.7, SD = 66.3; Bayesian one-tailed  $p = 0.001$ , Z-CCC = 5.48). In  
35 fact, during data collection we kept encouraging DF to move faster, but this was the  
36 maximum speed she could achieve.  
37  
38  
39  
40  
41  
42  
43  
44  
45  
46  
47  
48  
49  
50

51 Remarkably DF was severely impaired in her ability to make fast trajectory  
52 corrections on jump trials whilst maintaining fixation. None of DF's corrections emerged  
53 within 400 ms after the target jump, whilst the vast majority of corrections in controls were  
54 visible within 250-300 ms (Fig. 3A and B). Her mean correction time was abnormally long  
55  
56  
57  
58  
59  
60  
61  
62  
63  
64  
65

1 (Figs. 3C) for both left and right target jumps (left: Bayesian one-tailed  $p = 0.00008$ , Z-CCC  
2 = 8.15; right: Bayesian one-tailed  $p = 0.0001$ , Z-CCC = 7.60). To assess whether DF's  
3 slowed correction time was a consequence of general slowing in overall performance we ran  
4 an additional analysis comparing DF and controls with both age and movement time (to the  
5 central static target) entered as co-variates. This revealed that DF was still significantly slow  
6 at performing corrections to left target jumps when compared to controls and her correction  
7 time to right jumps was also slow but this not reach significance (left: Bayesian one-tailed  $p$   
8 = 0.04, Z-CCC = 5.21; right: Bayesian one-tailed  $p = 0.067$ , Z-CCC = 4.37).  
9  
10  
11  
12  
13  
14  
15  
16  
17  
18

19 As displayed in Fig 4, in contrast to the controls who amended their hand trajectory  
20 progressively and smoothly in response to the majority of jump trials, DF very often  
21 completed an initially planned reach to the central location before executing a second  
22 movement to the final target location (this pattern is especially pronounced for left jumps).  
23  
24  
25  
26  
27  
28

29 The successful corrections that she made tended to be less accurate than those of controls, but  
30 this difference was not significant (left: DF = 2.78°; controls mean = 0.39°, SD = 1.04°;  
31 Bayesian two-tailed  $p = 0.38$ , Z-CCC = 1.19; right: DF = -2.65°; controls mean = -0.17°, SD  
32 = 0.74°; Bayesian two-tailed  $p = 0.07$ , Z-CCC = -2.73). Her end-point accuracy was normal  
33 for static trials (DF = 0.01°; controls mean = 0.05°, SD = 0.2°; Bayesian two-tailed  $p = 0.80$ ,  
34 Z-CCC = 0.35).  
35  
36  
37  
38  
39  
40  
41  
42  
43

44 In the perceptual task, DF was able to correctly discriminate the direction of the target  
45 jump when it moved rightwards (DF = 97%; controls mean = 97.2%, SD = 3.7%; Bayesian  
46 one-tailed  $p = 0.17$ , Z-CCC = 1.29), but missed a significant number of left jumps (DF =  
47 90%; controls mean = 98.1%, SD = 2.0%; Bayesian one-tailed  $p = 0.01$ , Z-CCC = -3.60). In  
48 addition, DF showed abnormally slow perceptual discrimination of target jumps in either  
49 direction (left: Bayesian one-tailed  $p = 0.008$ , Z-CCC = 3.88; right: Bayesian one-tailed  $p =$   
50 0.003, Z-CCC = 2.86) (Fig.3E).  
51  
52  
53  
54  
55  
56  
57  
58  
59  
60  
61  
62  
63  
64  
65

1  
2 \*\*\*\*\*  
3  
4 Figure 3 and 4 about here  
5  
6 \*\*\*\*\*  
7  
8  
9

10  
11 **3.3. Discussion**

12 For the first time, we investigated DF’s ability to react to a sudden change in target position  
13 during reaching. We found that she is dramatically unable to make fast corrections to target  
14 jumps to extra-foveal vision, in either direction. She did eventually correct on a majority of  
15 occasions, but her correction time was more than twice that of controls. She can thus guide  
16 movements to targets in central vision quite well, but is impaired at quickly updating those  
17 movements when the target position changes.  
18  
19  
20  
21  
22  
23  
24  
25  
26  
27

28  
29 DF was also abnormally slow in a perceptual version of the double-step task, matched  
30 for stimulus events. Unlike the simple target detection of Experiment 1, the present  
31 perceptual task required discrimination of the *direction* of the target jump. In reaching and  
32 detection tasks alike, DF was *relatively* more slowed in responding to left than to right target  
33 jumps, which would not exclude a common functional basis. As in Experiment 1, then, it is  
34 possible that DF’s perceptual, as well as her visuomotor abnormalities, derive from her dorsal  
35 stream lesions. These data also challenge the view that DF’s perceptual performance in  
36 peripheral vision should always be worse than her visuomotor control (e.g. Whitwell, Milner  
37 & Goodale, 2014).  
38  
39  
40  
41  
42  
43  
44  
45  
46  
47  
48  
49  
50

51 Here, we have used a particularly stringent version of the double-step reaching task,  
52 in which fixation must be maintained at the original target location. Although normal  
53 participants do make rapid corrections in this task while holding the eyes still, the more  
54 natural inclination is to follow the target jump with the eyes slightly leading the hand  
55  
56  
57  
58  
59  
60  
61  
62  
63  
64  
65

1 (Blangero et al., 2008). Blangero and colleagues indeed suggested that one patient (CF) with  
2 optic ataxia was able to make trajectory correction *only* after he had moved his eyes. It should  
3  
4 be noted that the requirement to fixate is not a necessary condition to expose an on-line  
5 correction deficit. Blangero and colleagues (2008) measured but did not constrain eye  
6  
7 movements, and the original demonstrations of an on-line correction deficit in patient IG  
8  
9 were made with free vision (Gréa et al., 2002; Pisella et al., 2000). Thus it is interesting to  
10  
11 test DF's on-line correction in this more naturalistic way, with no requirement to hold  
12  
13 fixation.  
14  
15  
16  
17  
18

19         The task we employed here was clearly highly demanding for DF, as she not only  
20  
21 struggled to make fast on-line corrections but was also unable to comply with the basic speed  
22  
23 requirement for reaching, suggesting she found the task extremely challenging. In  
24  
25 Experiment 3, we re-tested DF's on-line correction ability, allowing her to move her eyes and  
26  
27 put less emphasis on speed requirements. Furthermore, we asked whether she makes  
28  
29 trajectory corrections automatically, when the task does not require it. For this purpose, we  
30  
31 used the STOP task of Pisella et al (2000), which instructs the participant to stop an ongoing  
32  
33 reach as soon as they see the target jump. Healthy controls show rapid, uninstructed,  
34  
35 corrections toward the jumped location, which precede the slower, voluntary STOP response  
36  
37 (Pisella et al., 2000; McIntosh et al., 2011; Rossit et al., 2009; 2012). Pisella et al., however,  
38  
39 found that patient IG made no uninstructed corrections, bolstering the idea that an automatic  
40  
41 visuomotor feedback loop is switched off in optic ataxia. Our goal was thus to establish  
42  
43 whether the only corrections DF can make are slow and voluntary or whether she does make  
44  
45 automatic corrections but these are retarded.  
46  
47  
48  
49  
50  
51  
52  
53  
54  
55

#### 56 **4. Experiment 3: On-line reaching correction, in free vision**

##### 57 **4.1. Methods**



#### 4.1.1. *Participants*

1  
2 **Patient DF** who suffers from visual form agnosia (see section 2.1.1 for details) performed  
3  
4 this experiment on the same day and place as Experiment 1 (she was 56 at the time of  
5  
6 testing).  
7

8  
9 **Control group:** Six right-handed and age-matched control participants (mean age:  
10  
11 61.7, SD 5.2; age range: 55-68 years; 4 females) were tested (none of them were tested in  
12  
13 Experiment 1). All participants had normal or corrected to normal visual acuity with no  
14  
15 history of neurological conditions. All experiments were approved by the local ethical  
16  
17 committee and all participants (including patient DF) gave informed consent prior to the  
18  
19 study.  
20  
21  
22

#### 4.1.2. *Apparatus and stimuli*

23  
24 The set-up, motion-tracking recordings and reaching targets were the same as in Experiment  
25  
26 1 (see section 2.1.2 for details), except that the following positions were used: -4 cm (left  
27  
28 hemispace) or +4cm (right hemispace) with respect to the central target (0) located at 40 cm  
29  
30 distance directly in front of the start trigger. Throughout this experiment eye movements were  
31  
32 unrestricted.  
33  
34  
35  
36  
37

#### 4.1.3. *Procedure*

38  
39 The paradigm consisted of location-go vs. location-stop conditions, previously used with a  
40  
41 large sample of healthy and brain-damaged participants (Rossit et al., 2008, 2012). At the  
42  
43 start of each trial, the participant's right index finger rested on the start button, aligned with  
44  
45 the subject's sagittal midline. In the location-go condition, participants were asked to point to  
46  
47 a target, which could jump unexpectedly to the right or left side of its initial central position  
48  
49 (30% of trials). Participants were instructed to point to the target, even if it jumped to a new  
50  
51 location. In the location-stop condition, participants were instructed to stop their movement  
52  
53 and return to the start position, as soon as possible, if they saw the target jump. On each trial,  
54  
55  
56  
57  
58  
59  
60  
61  
62  
63  
64  
65

1 participants pressed the start trigger to initiate central target presentation. One second later, a  
2 500 ms tone (800 Hz) cued participants to start the reach. For both conditions, the target jump  
3 was triggered by release of the start trigger, i.e., at movement onset. One second after the  
4 release of the start trigger, the target disappeared and another tone announced the end of the  
5 trial. Participants were instructed to perform their movements as quickly and as accurately as  
6 possible, with their right index finger.

7 The two conditions (location-go; location-stop) were given in separate blocks and  
8 block order was the same across participants so that controls performed the experiment in the  
9 same order as DF (location-go followed by location-stop). Each block contained 18 practice  
10 trials (6 for each target position) and 200 experimental trials. To minimize anticipatory  
11 trajectory adjustments, target positions were unperturbed in 70% of experimental trials in  
12 each block (i.e., N = 140 trials). For the perturbed trials in each block (i.e., N = 60 trials), the  
13 target jumped in equal proportion to the right (i.e., N = 30 trials) or left (i.e., N = 30 trials) of  
14 the central target, as soon as the participant released the start button. Trial order within blocks  
15 was randomly shuffled. At the end of the experiment, calibration coordinates were obtained  
16 by continuous presentation of each target position, one by one, allowing the subjects to adjust  
17 their terminal fingertip position until they felt that they had perfectly occluded the target.  
18 There were three calibration trials per target and three for the start position.

#### 19 *4.1.4 Data analysis*

20 The data analysis routine was the same as in Rossit et al. (2012). The raw data from the  
21 marker were filtered by a dual-pass through a second-order Butterworth filter with a cut-off  
22 frequency of 10 Hz, and analysed using customized software written in the LabVIEW  
23 programming environment (National Instruments).

24 For both location go and stop conditions, RT (the time taken to initiate a reach  
25 overall) was extracted and collapsed for all target positions (since in this task they are

performing a switch release response button in response to a middle target for all conditions).

1  
2 For the location-go condition, movement offset was defined as the final frame before which  
3  
4 forward (Y) velocity fell below 50 mm/s. For the location-stop condition, the end of the  
5  
6 movement was identified as the frame before the velocity in the y-axis went negative (i.e.,  
7  
8 pullback) provided that velocity fell below -100 mm/s within 50 ms of the first becoming  
9  
10 negative. The presence of corrections in each perturbed trial was determined on spatial  
11  
12 grounds, by comparison of the XY path of the movement (trajectory in the plane of the box  
13  
14 surface) against the distribution of XY paths in the corresponding unperturbed trials. This  
15  
16 analysis was conducted using the filtered XY data for each participant separately. First, XY  
17  
18 trajectories for all movements were normalized using linear interpolation to estimate the  
19  
20 horizontal (X) coordinate of the marker at standardized 1 mm increments along the depth (Y)  
21  
22 axis. Second, the unperturbed trials mean x coordinate and its standard deviation were  
23  
24 calculated at each depth increment. Next, for each normalized perturbed trajectory, the  
25  
26 horizontal coordinate at each of these depth coordinates was classified as ‘corrected’ if it fell  
27  
28 at least 2.81 standard deviations from the mean of the corresponding unperturbed trials in the  
29  
30 direction of the target perturbation (one-tailed alpha level of 0.0025 per comparison,  
31  
32 matching the one used in McIntosh et al., 2011 and Rossit et al., 2012), being otherwise  
33  
34 classified as ‘uncorrected’. The depth coordinates at which transitions between uncorrected  
35  
36 and corrected states occurred were then converted to times of transition by referencing the  
37  
38 filtered XY data for that trial and using linear interpolation to estimate the times at which the  
39  
40 marker occupied those depth coordinates.  
41  
42  
43  
44  
45  
46  
47  
48  
49  
50

51 For corrected trials, and based on the above criteria, we defined correction time for  
52  
53 both location-go and location-stop conditions as the time (in ms) at which the marker was  
54  
55 first detected to be in a corrected position. For successfully corrected trials as well as for non-  
56  
57 perturbed trials in the location-go condition we also extracted the directional error (defined as  
58  
59  
60  
61  
62  
63  
64  
65

1 the signed angular deviation of the movement endpoint relative to the ideal reach [obtained  
2 from calibration trials]). For the location-stop condition, trials were classified as successful  
3 stops if a velocity reversal in the y-axis was detected and this was used to compute stop status  
4 (defined as the percentage of successful stops) and stop time (defined as the time between  
5 movement onset and the time it took the subject to stop the movement). In addition, for both  
6 conditions, a temporal profile of current percentage of corrections was compiled for left and  
7 right target shifts. Time from movement onset was divided into 10 ms bins. For each time  
8 bin, the number of perturbed trials in which the marker was in a corrected position at the end  
9 of that bin was expressed as a proportion of the total number of movements in that condition  
10 that were still ongoing at the end of that time bin. The resultant profile thus recorded the  
11 current percentage of ongoing movements that were in a corrected position at each time bin.  
12 The patient's performance was compared to that of the controls using modified t-tests  
13 developed for single-case studies (Crawford & Garthwaite, 2002). Moreover the RSDT  
14 (Crawford & Garthwaite, 2005) was used to compare the left-right asymmetry in DF vs.  
15 controls and to compare differences between tasks in DF vs. controls. One-tailed tests were  
16 used for tests in which there was an unambiguous directional prediction, but not were  
17 impaired performance could differ in either direction from controls.

## 4.2. Results

45 For all conditions DF's overall reaction time (ms) was comparable to that of controls  
46 (location go: DF = 251.6; controls mean = 247.3, SD = 38.0,  $t = 0.10$ , two-tailed  $p = 0.92$ ;  
47 location-stop: DF = 324.9; controls mean = 276.1, SD = 54.2,  $t = 0.83$ , two-tailed  $p = 0.44$ ).

48 In the location-go condition, patient DF ultimately achieved 100% of corrections in  
49 response to both right and left target jumps but her movement time was long (Figs.5A and  
50 5B). In particular, and similarly to Experiment 2, DF's movement time (ms) was considerably

1 longer than that of controls for static trials (DF = 602.0; controls mean = 461.5, SD = 47.5, t  
2 = 2.7, one-tailed  $p = 0.02$ ), for left jumps (DF = 711.7; controls mean = 535.4, SD = 28.2, t =  
3 5.2, one-tailed  $p = 0.0017$ ), and for right jumps (DF = 607.7; controls mean = 508.9, SD =  
4 28.8, t = 3.2, one-tailed  $p = 0.01$ ). Moreover, as in Experiment 2, her correction time occurred  
5 significantly later than that of controls for both left (t = 5.1, one-tailed  $p = 0.002$ ; Figs. 5A and  
6 5C) and right target jumps (t = 3.2, one-tailed  $p = 0.01$ ; Figs. 5B and 5C). As in experiment 2,  
7 to assess whether DF's slowed correction time was a consequence of general slowing in  
8 overall performance we ran an additional analysis comparing DF and controls movement  
9 time (to the central static target) entered as co-variate. This revealed that DF was still  
10 significantly slow at performing corrections to left and right target jumps when compared to  
11 controls even when slow movement time was accounted for (left: Bayesian one-tailed  $p =$   
12 0.02, Z-CCC = 5.96; right: Bayesian one-tailed  $p = 0.02$ , Z-CCC = 5.42).  
13  
14  
15  
16  
17  
18  
19  
20  
21  
22  
23  
24  
25  
26  
27  
28

29 As can be seen in Figure 6, DF's corrections typically involved a continuous forward  
30 movement deviating smoothly towards the jump, similar to those of controls. DF was as  
31 accurate as controls in her reaches to left and right target jumps as well as in the static trials  
32 condition (static trials: DF =  $-0.1^\circ$ ; mean controls =  $-0.1^\circ$ , SD =  $0.2^\circ$ ; t = 0.2, two-tailed  $p =$   
33 0.8; left jumps: DF =  $0.2^\circ$ ; mean controls =  $-0.1^\circ$ , SD =  $0.2^\circ$ ; t = 1.4, two-tailed  $p = 0.2$ ; right  
34 jumps: DF =  $0.9^\circ$ ; mean controls =  $-0.1^\circ$ , SD =  $0.6^\circ$ ; t = 1.7, two-tailed  $p = 0.1$ ).  
35  
36  
37  
38  
39  
40  
41  
42  
43  
44  
45

46 \*\*\*\*\*

47  
48 Figure 5 and 6 about here  
49

50 \*\*\*\*\*

51  
52  
53  
54  
55  
56 In the location-stop condition, despite being instructed to stop and pull back in  
57 response to a target jump all participants (including patient DF) still corrected their  
58  
59  
60  
61  
62  
63  
64  
65

1 movements towards right and left jumps in the majority of jump trials (Fig. 7A and B).  
2 However, and similarly to the location-go condition, DF was significantly slower than  
3 controls in her correction time to both left ( $t = 16.5$ , one-tailed  $p = 0.00001$ ; Fig. 7C) and  
4 right target jumps ( $t = 3.7$ , one-tailed  $p = 0.007$ ; Fig. 7C). Moreover, the RSDT showed that  
5 the difference between DF's correction time to left vs. right target jumps was significantly  
6 larger than that of controls (mean difference DF = 345.3 ms; mean difference controls = 49.0  
7 ms;  $t = 13.9$ , one-tailed  $p = 0.00002$ ), indicating that she had abnormally long correction time  
8 to left jumps (Fig. 7C).  
9

10 Nevertheless, despite the significant slowing of her on-line corrections, DF was able  
11 to stop her movements in response to target jumps in a similar way to controls (left jumps:  $t =$   
12  $0.2$ , one-tailed  $p = 0.4$ ; right jumps:  $t = -0.4$ , one-tailed  $p = 0.4$ ). In particular, she stopped her  
13 movements in 90% of left jump trials (mean controls = 83%, SD = 28%) and in 82% of right  
14 jump trials (mean controls = 89%, SD = 19%) and her stop time was within the normal range  
15 for both sides of space (left jumps: DF = 522.8 ms, mean controls = 425.0 ms, SD controls =  
16 87.8 ms,  $t = 1.0$ , one-tailed  $p = 0.2$ ; right jumps: DF = 482.3 ms, mean controls = 402.2 ms,  
17 SD controls = 74.0 ms,  $t = 1.0$ , one-tailed  $p = 0.2$ ) with no significant left-right asymmetry  
18 (RSDT  $t = 0.08$ , one-tailed  $p = 0.5$ ).  
19

20 \*\*\*\*\*

21 Figure 7 about here

22 \*\*\*\*\*

### 23 4.3. Discussion

24 This experiment investigated DF's ability to perform on-line corrections in response to target  
25 jumps in the less restricted condition of free vision and in a less speed-demanding task than  
26

1 Experiment 2. In addition we also assessed her ‘automatic pilot’ for the hand using the STOP  
2 task of Pisella et al (2000). Despite the relaxation of the fixation and speed requirements,  
3  
4 DF’s on-line corrections to left and right target jumps were still abnormally slow when  
5  
6 compared to the controls. This constitutes the first demonstration that, similarly to optic  
7  
8 ataxia patients, DF’s fast on-line control is markedly impaired even when eye movements are  
9  
10 permitted (Pisella et al., 2000; Gréa et al., 2002).  
11  
12  
13

14 However, unlike what has been reported in optic ataxic patient IG (Pisella et al.,  
15  
16 2000), DF still produced automatic reaching corrections in the majority of jump trials when  
17  
18 instructed instead to interrupt her movements. This finding suggests that the ‘automatic pilot’  
19  
20 for the hand may be present in DF, since corrections emerge when not specifically instructed.  
21  
22 However, DF’s uninstructed corrections were significantly slower than controls, indicating  
23  
24 that her ‘automatic pilot’ for the hand is not functionally intact. We thus confirm that, in  
25  
26 addition to misreaching and impaired grip scaling (Hesse, Ball & Schenk, 2012), DF has a  
27  
28 further characteristic symptom of optic ataxia: a very slow ‘automatic pilot’ of the hand  
29  
30 (Pisella et al., 2000).  
31  
32  
33  
34  
35

36 It could be argued that DF’s deficits in online correction are due to an overall slowing  
37  
38 as her movement time was also longer than that of controls. However, even when we used  
39  
40 movement time as a co-variate, in both experiments 2 and 3, her correction time was still  
41  
42 significantly late. In line with this, her reaction time for reaching in experiment 3 was within  
43  
44 normal range suggesting that her slowed reaction is specific to online control. DF could also  
45  
46 voluntarily stop her movement in response to the target jumps as quickly as controls  
47  
48 suggesting that her deficits are also not simply explained by a general delay in visuomotor  
49  
50 processing. This does not contradict the findings of impaired perceptual performance in  
51  
52 Experiment 2’s perceptual task, since for that task DF not only had to detect the jump but also  
53  
54 discriminate its direction.  
55  
56  
57  
58  
59  
60  
61  
62  
63  
64  
65

## 5. General Discussion

1  
2  
3  
4  
5  
6  
7  
8  
9  
10  
11  
12  
13  
14  
15  
16  
17  
18  
19  
20  
21  
22  
23  
24  
25  
26  
27  
28  
29  
30  
31  
32  
33  
34  
35  
36  
37  
38  
39  
40  
41  
42  
43  
44  
45  
46  
47  
48  
49  
50  
51  
52  
53  
54  
55  
56  
57  
58  
59  
60  
61  
62  
63  
64  
65

The present data question the long-standing assumption that DF's dorsal visual stream is functionally intact and that her on-line visuomotor control is unimpaired (Milner et al., 1991; Goodale, Milner, Jakobson & Carey, 1991; Goodale, Meenan et al., 1994; James et al., 2003; Whitwell, Milner & Goodale, 2014). Instead our data, along with those of Hesse, Ball and Schenk (2012, 2014), indicate that, in addition to visual form agnosia, DF also has visuomotor symptoms of optic ataxia. We confirm earlier reports that DF is impaired in peripheral (but not central) reaching, the typical diagnostic task for optic ataxia (Hesse, Ball & Schenk, 2012, 2014). Moreover, and for the first time, we find that DF also presents significant deficits in the fast on-line control of reaching, which is another common feature of patients with optic ataxia (McIntosh et al., 2011; Pisella et al., 2000; Rossetti, Pisella & Vighetto, 2003; Gréa et al., 2002; Blangero et al., 2008). This deficit was most severe when DF had to maintain central fixation, so could not acquire the displaced target with her eyes to guide her hand, yet she was also extremely slow to respond to target displacements even when eye movements were unconstrained. In fact, DF's hand path trajectory for jump trials in fixation-controlled conditions is also similar to that seen in patients with optic ataxia who like DF complete two distinct movements: a first one toward the initial target location and a second one toward the final target location (Gréa et al., 2002).

We would suggest that, given the clear correspondence to established patterns of optic ataxia, the most likely explanation for DF's bilateral visuomotor problems on these tasks is that SPOC is neither anatomically nor functionally intact in either of her hemispheres (Milner et al., 1991; James et al., 2003; Bridge et al., 2013). In line with this, DF's peripheral reaching performance, with increasing errors towards fixation at larger target eccentricities, is not only reminiscent of optic ataxia, but is also akin to that of healthy participants who have undergone rTMS to SPOC (Vesia et al., 2010; Ciavarro et al., 2013). Moreover, the same



1 SPOC regions that are damaged in patients with optic ataxia (Karnath & Perenin, 2005), have  
2 been shown to be activated in healthy participants during reaching, especially towards  
3 peripheral targets (Prado et al., 2005; Martin, Karnath & Himmelbach, 2015). Similarly,  
4 monkey neurophysiology has shown that neurons in V6A, an area in the macaque thought to  
5 correspond to human SPOC, are particularly sensitive to arm movements directed to non-  
6 foveated objects (Marzocchi et al., 2008), are modulated by gaze position (Galletti, Battaglini  
7 & Fattori, 1995) and, when inactivated, lead to misreaching to peripheral targets (Hwang et  
8 al., 2012). Moreover, inactivation, neuroimaging and neurophysiological studies in both  
9 human and non-human primates have also implicated the posterior parietal cortex in on-line  
10 corrections of hand movements (Desmurget et al., 1999, 2001; Diedrichesen et al., 2005;  
11 Reichenbach et al., 2011; Tunik, Frey & Grafton, 2005; Tunik et al., 2007; Battaglia-Mayer  
12 et al., 2013, 2014; Archambault, Caminiti & Battaglia-Mayer, 2009; Archambault et al.,  
13 2015; Gaveau et al., 2014; Glover, Miall & Rushworth, 2005; Rice, Tunik & Grafton, 2006;  
14 Rice et al., 2007; Della-Maggiore et al., 2004; Rossit et al., 2012).

15  
16  
17  
18  
19  
20  
21  
22  
23  
24  
25  
26  
27  
28  
29  
30  
31  
32  
33  
34 DF was also impaired when detecting peripheral targets perceptually and when  
35 discriminating jump direction. It could thus be argued that DF's deficits in peripheral  
36 reaching to static and jumping targets may be a consequence of her perceptual impairments  
37 rather than visuomotor symptoms *per se*. However, it has recently become apparent that  
38 patients with optic ataxia – without ventral stream involvement - show similar perceptual  
39 deficits, which may reflect impaired orienting of attention to optic ataxic fields (Striemer et  
40 al., 2007, 2009; Pisella et al., 2007; McIntosh et al., 2011). Moreover, neurophysiological  
41 recordings in the monkey have shown that attentional and reach activity are closely related in  
42 area V6A (Galletti et al., 2010) and, that rTMS over human SPOC selectively impairs  
43 attentional orienting in both reaching and attentional tasks (Ciavarro et al., 2013).

44  
45  
46  
47  
48  
49  
50  
51  
52  
53  
54  
55  
56  
57  
58 Furthermore, in Experiment 3, DF had a significant asymmetry in correction time when  
59  
60  
61  
62  
63  
64  
65

1 compared to controls with severe slowing for left jumps specifically. Similarly, we found that  
2 her performance was also asymmetric in the perceptual discrimination task in Experiment 2.  
3  
4 DF's asymmetrical pattern is reminiscent of the slow correction times for left jumps we have  
5 found in patients with left visual neglect after right temporo-parietal strokes (Rossit et al.,  
6  
7 2012). Thus it could be that DF's lesions also cause a deficit in our perceptual tasks due to a  
8  
9 problem in attention orienting which is more severe for the left side of space, but this remains  
10  
11 to be tested. Interestingly, DF's reaction times for reaching were not significantly slower than  
12  
13 controls indicating that her deficit in RT may be specific to our perceptual tasks and is not  
14  
15 just a consequence of a general slowing associated with aging and/or lesion volume.  
16  
17

18  
19 The present findings, and those of Hesse et al (2012, 2014), are at odds with a  
20  
21 previous report of spared peripheral reaching performance in DF (Milner et al., 1999). It has  
22  
23 been suggested that DF's lesion in the dorsal stream may have increased since her first scans  
24  
25 (Whitwell, Milner & Goodale, 2014) thus explaining why only now she is found to be  
26  
27 impaired in peripheral reaching. In any event, given the pivotal role that the putative  
28  
29 dissociation between optic ataxia and visual form agnosia has played in supporting the  
30  
31 perception-action model, it is important to consider what implications these findings have for  
32  
33 that dissociation, for the model, and for the testing of DF herself.  
34  
35  
36  
37  
38  
39  
40

41 We conclude that DF, one of the cornerstones of the perception and action model,  
42  
43 should no longer be considered a pure visual form agnosia patient with a relatively spared  
44  
45 dorsal visual stream. In particular, we can no longer assume that DF's dorsal visual stream is  
46  
47 intact and that she is spared in visuomotor control tasks, as she also presents clear signs of  
48  
49 optic ataxia. This highlights how correct Rossetti, Pisella and Vighetto (2003) and Pisella et  
50  
51 al. (2006) were to point out the lack of parallel testing of optic ataxia and visual form  
52  
53 agnosia. However we would argue that the finding that DF has optic ataxia does not  
54  
55 necessarily exclude the possible existence of a dissociation between visual form agnosia and  
56  
57  
58  
59  
60  
61  
62  
63  
64  
65

1 optic ataxia, in contrast to what has been suggested by Hesse et al. (2012, 2014). Instead we  
2 simply suggest that the dissociation has not actually been properly tested and that her  
3 concomitant optic ataxia makes her an inappropriate participant for testing dissociations  
4 between optic ataxia and visual form agnosia. In other words, DF can no longer be  
5 considered as an appropriate single-case model for the dissociation of visual form agnosia  
6 from optic ataxia and for testing the neural basis of perception and action dissociations.  
7

8  
9  
10  
11  
12  
13  
14 These new revelations have significant implications for previous studies of patient DF  
15 (including our own) which have attributed her deficits to ventral stream damage and, thus  
16 their conclusions should be revisited to acknowledge a dorsal involvement as well. It is also  
17 important to admit that attributing certain symptoms to lesion location is very difficult in  
18 patient DF as she presents large ventral and dorsal visual stream lesions as well as  
19 widespread brain atrophy. In fact, Milner et al. (1991) already noted that DF also presents  
20 bilateral basal ganglia (i.e., globus pallidus and lentiform nucleus) damage, which can be  
21 associated with inaccurate reaching in open loop conditions and increased reaction times  
22 (Rossit et al., 2009) as well as on-line control of error corrections (Grafton & Tunik, 2011).  
23  
24 Therefore, this subcortical damage in DF, along with the presence of both perception and  
25 action deficits in this patient, generates significant difficulties in using her as a single-case  
26 patient model to test the neural basis of perception and action. It does not, however, diminish  
27 the scientific interest in contrasting further, more pure cases, of visual form agnosia with  
28 optic ataxia or testing the predictions of the model on a larger sample of patients and with  
29 other techniques such as neuroimaging and neurophysiology.  
30  
31  
32  
33  
34  
35  
36  
37  
38  
39  
40  
41  
42  
43  
44  
45  
46  
47  
48  
49  
50  
51  
52

### 53 **Acknowledgements**

54  
55  
56 The authors are extremely grateful to patient DF and controls for participating in all three  
57 experiments. We would also like to thank Dr. Ian G. McKenzie and Prof. Hartmut Leuthold  
58  
59  
60  
61  
62  
63  
64  
65

1 for help with EOG recordings and analysis in Experiment 1 and Dr. Fraser W. Smith for help  
2 with statistical analysis programming and for commenting on earlier versions of this  
3 manuscript. During data collection SR was funded by a post-doctoral fellowship from the  
4 Portuguese Foundation for Science and Technology and the Social European Fund (grant  
5 SFRH/BPD/65951/2009). Part of this data can be found in two published conference  
6 abstracts (Harvey et al., 2009, Journal of Vision; Rossit et al., 2012, Perception).  
7  
8  
9  
10  
11  
12  
13  
14  
15

### 16 **Figure captions**

17 **Figure 1.** Results of experiment 1. End-pointing coordinates of patient DF and average of the  
18 control participants per target position for free and peripheral vision. Negative x-coordinates  
19 denotes left side of space and positive x-coordinates the right side of space.  
20  
21  
22  
23  
24

25 **Figure 2.** Results of experiment 1. Mean directional error (in degrees) for patient DF and  
26 control participants per target position for free (A) and fixation conditions (B). C. Mean  
27 reaction time (in ms) for the perceptual task with fixation for patient DF and control  
28 participants. Error bars represent control 95% confidence intervals calculated with single-  
29 case statistics (Crawford & Garthwaite, 2002). CI = confidence interval.  
30  
31  
32  
33  
34  
35  
36  
37

38 **Figure 3.** Results for experiment 2. (A and B) Current proportion of corrected responses to  
39 left (A) and right (B) peripheral jumps for patient DF and controls. Dotted lines represent  
40 95% control confidence interval (lower bound only). (C) Mean correction time (in ms) for DF  
41 and controls. (D) Mean reaction time (in ms) for the perceptual task for patient DF and  
42 control participants. (C to E) Error bars represent control 95% confidence interval. (A to D)  
43 All control confidence intervals were calculated with single-case statistics (Crawford &  
44 Garthwaite, 2002). CI = confidence interval.  
45  
46  
47  
48  
49  
50  
51  
52  
53  
54

55 **Figure 4.** Individual hand paths (in mm) in experiment 2 for patient DF and a representative  
56 control subject (HC) toward static targets (grey curves) and jump left and right trials (black  
57 curves).  
58  
59  
60  
61  
62  
63  
64  
65

1 **Figure 5.** Results for the location **GO** condition (experiment 3). (A and B) Current proportion  
2 of corrected responses to left (A) and right (B) jumps for patient DF and controls. Dotted  
3 lines represent control 95% confidence interval (lower bound only). (C) Mean correction time  
4 (in ms) for DF and controls. Error bars represent control 95% confidence interval. (A to C)  
5 All control confidence intervals were calculated with single-case statistics (Crawford &  
6 Garthwaite, 2002). CI = confidence interval.  
7  
8  
9  
10  
11  
12  
13

14 **Figure 6.** Individual hand paths (in mm) in experiment 3 (GO condition) for patient DF and a  
15 representative control subject (HC) toward static targets (grey curves) and jump left and right  
16 trials (black curves).  
17  
18  
19  
20  
21

22 **Figure 7.** Results for the location **STOP** condition (experiment 3). (A and B) Current  
23 proportion of corrected responses to left (A) and right (B) jumps for patient DF and controls.  
24 Dotted lines represent control 95% confidence interval (lower bound only). (C) Mean  
25 correction time (in ms) for DF and controls. Error bars represent control 95% confidence  
26 interval. (A to D) All control confidence intervals were calculated with single-case statistics  
27 (Crawford & Garthwaite, 2002). CI = confidence interval.  
28  
29  
30  
31  
32  
33  
34  
35  
36  
37

## 38 REFERENCES

- 39 Anderson, R.A., Andersen, K.N., Hwang, E.J. & Hauschild, M. (2014). Optic ataxia: from  
40 balint's syndrome to the parietal reach region. *Neuron*, *81*, 967-983.  
41 Archambault, P. S., Caminiti, R., & Battaglia-Mayer, A. (2009). Cortical mechanisms for  
42 online control of hand movement trajectory: The role of the posterior parietal cortex.  
43 *Cerebral Cortex*, *19*, 2848-2864.  
44 Archambault, P.S., Ferrari-Toniolo, S., Caminiti, R. & Battaglia-Mayer, A. (2015). Visually-  
45 guided correction of hand reaching movements: the neurophysiological bases in the  
46 cerebral cortex. *Vision Research*, *110*, 244-456.  
47 Asher I., Stark E., Abeles M., & Prut Y. (2007). Comparison of direction and object  
48 selectivity of local field potentials and single units in macaque posterior parietal  
49 cortex during prehension. *Journal of Neurophysiology*, *97*, 3684-3695.  
50 Astafiev, S.V., Shulman, G.L., Stanley, C.M., Snyder, A.Z., Van Essen, D.C., & Corbetta, M.  
51 (2003). Functional organization of human intraparietal and frontal cortex for  
52 attending, looking, and pointing. *Journal of Neuroscience*, *23*, 4689-4699.  
53 Battaglia-Mayer, A., Buiatti, T., Caminiti, R., Ferraina, S., Lacquaniti, F., & Shallice, T.  
54 (2014). Correction and suppression of reaching movements in the cerebral cortex:  
55 Physiological and neuropsychological aspects. *Neuroscience & Biobehavioral*  
56 *Reviews*, *42*, 232-251.  
57  
58  
59  
60  
61  
62  
63  
64  
65

- 1 Battaglia-Mayer, A., Ferrari-Toniolo, S., Visco-Comandini, F., Archambault, P. S., Saberi-  
2 Moghadam, S., & Caminiti, R. (2013). Impairment of online control of hand and eye  
3 movements in a monkey model of optic ataxia. *Cerebral Cortex*, *23*, 2644-2656.
- 4 Battaglini P.P., Muzur A., Galletti C., Skrap M., Brovelli A., & Fattori P. (2002). Effects of  
5 lesions to area V6A in monkeys. *Experimental Brain Research*, *144*, 419-422.
- 6 Begliomini C., Caria A., Grodd W., Castiello U. (2007b). Comparing natural and constrained  
7 movements: new insights into the visuomotor control of grasping. *PLoS ONE*, *2*,  
8 e1108.
- 9  
10 Begliomini C., Wall M.B., Smith A.T., & Castiello U. (2007a). Differential cortical activity  
11 for precision and whole-hand visually guided grasping in humans. *European Journal*  
12 *of Neuroscience*, *25*, 1245-1252.
- 13 Beurze S.M., de Lange F.P., Toni I., Medendorp W.P. (2007). Integration of target and  
14 effector information in the human brain during reach planning. *Journal of*  
15 *Neurophysiology*, *97*, 188-199.
- 16  
17 Binkofski, F., Dohle, C., Posse, S., Stephan, K.M., Hefter, H., Seitz, R.J., Freund, H.J.  
18 (1998). Human anterior intraparietal area subserves prehension: a combined lesion  
19 and functional MRI activation study. *Neurology*, *50*, 1253-1259.
- 20  
21 Blangero, A., Gaveau, V., Luaute, J., Rode, G., Salemme, R., Guinard, M., Boisson, D.,  
22 Rossetti, Y., & Pisella, L. (2008). A hand and a field effect in on-line motor control in  
23 unilateral optic ataxia. *Cortex*, *44*, 560-568.
- 24  
25 Blangero, A., Ota, H., Rossetti, Y., Fujii, T., Ohtake, H., Tabuchi, M., Vighetto, A.,  
26 Yamadori, A., Vindras, P., & Pisella, L. (2010). Systematic retinotopic reaching error  
27 vectors in unilateral optic ataxia. *Cortex*, *46*, 77-93.
- 28  
29 Brenner, E., & Smeets, J. B. (1997). Fast responses of the human hand to changes in target  
30 position. *Journal of Motor Behavior*, *29*, 297-310.
- 31  
32 Breveglieri, R., Galletti, C., Bosco, A., Gamberini, M., & Fattori, P. (2016). Object  
33 affordance modulates visual responses in the macaque medial posterior parietal  
34 cortex. *Journal of Cognitive Neuroscience*, *27*, 1447-1455.
- 35  
36 Bridge, H., Thomas, O.M., Minini, L., Cavina-Pratesi, C., Milner, A.D., & Parker, A.J.  
37 (2013). Structural and functional changes across the visual cortex of a patient with  
38 visual form agnosia. *Journal of Neuroscience*, *33*, 12779-12791.
- 39  
40 Buxbaum, L.J., & Coslett, H.B. (1997). Subtypes of optic ataxia: reframing the disconnection  
41 account. *Neurocase*, *3*, 159-166.
- 42  
43 Buxbaum, L.J., & Coslett, H.B. (1998). Spatio-motor representations in reaching: evidence  
44 for subtypes of optic ataxia. *Cognitive Neuropsychology*, *15*, 279-312.
- 45  
46 Carey, D.P. (2010). *Two visual streams: neuropsychological evidence*. In Elliot D & Khan M  
47 (Ed). Vision and Goal-Directed Movement. Neurobehavioral Perspectives. Human  
48 Kinetics. Pp. 265-276.
- 49  
50 Carey, D.P., Dijkerman, H.C., & Milner, A.D. (2009). Pointing to two imaginary targets at  
51 the same time: bimanual allocentric and egocentric localization in visual form agnostic  
52 D.F. *Neuropsychologia*, *47*, 1469-1475.
- 53  
54 Carey, D.P., Coleman, R.J., & Della Sala, S. (1997). Magnetic misreaching. *Cortex*, *33*, 639-  
55 652.
- 56  
57 Castiello, U., Paulignan, M., & Jeannerod, M. (1991). Temporal dissociation of motor  
58 responses and subjective awareness. *Brain*, *114*, pp. 2639-2655.
- 59  
60 Cavina-Pratesi, C., Kentridge, R.W., Heywood, C.A., & Milner, A.D. (2010a). Separate  
61 processing of texture and form in the ventral visual stream: evidence from fMRI and  
62 visual form agnosia. *Cerebral Cortex*, *20*, 433-446.
- 63  
64  
65

- 1 Cavina-Pratesi, C., Kentridge, R.W., Heywood, C.A., & Milner, A.D. (2010b). Separate  
2 channels for processing form, texture, and color: evidence from fMRI adaptation and  
3 visual object agnosia. *Cerebral Cortex*, *20*, 2319-2332.
- 4 Cavina-Pratesi, C., Monaco, S., Fattori, P., Galletti, C., McAdam, T.D., Quinlan, D.J.,  
5 Goodale, M.A., & Culham, J.C. (2010c). Functional magnetic resonance imaging  
6 reveals the neural substrates of arm transport and grip formation in reach-to-grasp  
7 actions in humans. *Journal of Neuroscience*, *30*, 10306-10323.
- 8 Ciavarro, M., Ambrosini, E., Tosoni, A., Committeri, G., Fattori, P., & Galletti, C. (2013).  
9 rTMS of medial parieto-occipital cortex interferes with attentional reorienting during  
10 attention and reaching tasks. *Journal of Cognitive Neuroscience*, *25*, 1453-1462.
- 11 Connolly, J.D., Andersen, R.A., & Goodale, M.A. (2003). FMRI evidence for a 'parietal  
12 reach region' in the human brain. *Experimental Brain Research*, *153*, 140-145.
- 13 Crawford, J. R., & Garthwaite, P. H. (2002). Investigation of the single case in  
14 neuropsychology: Confidence limits on the abnormality of test scores and  
15 test score differences. *Neuropsychologia*, *40*, 1196-1208.
- 16 Crawford, J. R., & Garthwaite, P. H. (2005). Testing for suspected impairments and  
17 dissociations in single-case studies in neuropsychology: Evaluation of  
18 alternatives using Monte Carlo simulations and revised tests for  
19 dissociations. *Neuropsychology*, *19*, 318-331.
- 20 Crawford, J. R., Garthwaite, P. H., & Ryan, K. (2011). Comparing a single case to a control  
21 sample: testing for neuropsychological deficits and dissociations in the presence of  
22 covariates. *Cortex*, *47*(10), 1166-1178.
- 23 Crawford, J.R., & Garthwaite, P.H. (2006). Detecting dissociations in single-case studies:  
24 Type I errors, statistical power and the classical versus strong distinction.  
25 *Neuropsychologia*, *44*, 2249-2258.
- 26 Crawford, J.R., Garthwaite, P.H., Gray, C.D. (2003). Wanted: Fully operational definitions of  
27 dissociations in single-case studies. *Cortex*, *39*, 357-370.
- 28 Culham, J.C., Danckert, S.L., DeSouza, J.F., Gati, J.S., Menon, R.S., & Goodale, M.A.  
29 (2003). Visually guided grasping produces fMRI activation in dorsal but not ventral  
30 stream brain areas. *Experimental Brain Research*, *153*, 180-189.
- 31 Davare, M., Andres, M., Clerget, E., Thonnard, J.L., & Olivier, E. (2007). Temporal  
32 dissociation between hand shaping and grip force scaling in the anterior intraparietal  
33 area. *Journal of Neuroscience*, *27*, 3974-3980.
- 34 Day, B.L., & Lyon, I.N. (2000). Voluntary modification of automatic arm movements evoked  
35 by motion of a visual target. *Experimental Brain Research*, *130*, 159-168.
- 36 Della-Maggiore, V., Malfait, N., Ostry, D. J., & Paus, T. (2004). Stimulation of the posterior  
37 parietal cortex interferes with arm trajectory adjustments during the learning of new  
38 dynamics. *Journal of Neuroscience*, *24*, 9971-9976.
- 39 Desmurget, M., Epstein, C.M., Turner, R.S., Prablanc, C., Alexander, G.E., & Grafton, S.T.  
40 (1999). Role of the posterior parietal cortex in updating reaching movements to a  
41 visual target. *Nature Neuroscience*, *2*, 563-567.
- 42 Diedrichsen, J., Hashambhoy, Y., Rane, T., & Shadmehr, R. (2005). Neural correlates of  
43 reach errors. *Journal of Neuroscience*, *25*, 9919-9931.
- 44 Dijkerman, H.C., McIntosh, R.D., Schindler, I., Nijboer, T.C.W., & Milner, A.D. (2009).  
45 Choosing between alternative wrist postures: action planning needs perception.  
46 *Neuropsychologia*, *47*, 1476-1482.
- 47 Dijkerman, H.C., Milner, A.D., & Carey, D.P. (1996). The perception and prehension of  
48 objects oriented in the depth plane. I. Effects of visual form agnosia. *Experimental  
49 Brain Research*, *112*, 442-451.
- 50  
51  
52  
53  
54  
55  
56  
57  
58  
59  
60  
61  
62  
63  
64  
65

- 1 Fattori, P., Breveglieri, R., Marzocchi, N., Filippini, D., Bosco, A., & Galletti, C. (2009).  
2 Hand orientation during reach-to-grasp movements modulates neuronal activity in the  
3 medial posterior parietal area V6A. *Journal of Neuroscience*, *29*, 1928-1936.
- 4 Fattori, P., Gamberini, M., Kutz, D.F., & Galletti, C. (2001). 'Arm-reaching' neurons in the  
5 parietal area V6A of the macaque monkey. *European Journal of Neuroscience*, *13*,  
6 2309-2313.
- 7 Fattori, P., Raos, V., Breveglieri, R., Bosco, A., Marzocchi, N., & Galletti, C. (2010). The  
8 dorsomedial pathway is not just for reaching: Grasping neurons in the medial parieto-  
9 occipital cortex of the macaque monkey. *Journal of Neuroscience*, *30*, 342-349.
- 10 Filimon, F., Nelson, J.D., Huang, R.S., & Sereno, M.I. (2009). Multiple parietal reach regions  
11 in humans: cortical representations for visual and proprioceptive feedback during on-  
12 line reaching. *Journal of Neuroscience*, *29*, 2961-2971.
- 13 Filimon, F., Nelson, J.D., Huang, R.S., & Sereno, M.I. (2009). Multiple parietal reach regions  
14 in humans: cortical representations for visual and proprioceptive feedback during on-  
15 line reaching. *Journal of Neuroscience*, *29*, 2961-2971.
- 16 Galletti, C., Battaglini, P.P., & Fattori, P. (1995). Eye position influence on the parieto-  
17 occipital area PO (V6) of the macaque monkey. *European Journal of Neuroscience*,  
18 *7*, 2486-2501.
- 19 Galletti, C., Breveglieri, R., Lappe, M., Bosco, A., Ciavarro, M., & Fattori, P. (2010). Covert  
20 shift of attention modulates the ongoing neural activity in a reaching area of the  
21 macaque dorsomedial visual stream. *PLoS One*, *5*, e15078.
- 22 Gallivan J.P., Mclean D.A., Valyear, K.F., Pettypiece, C.E., & Culham J.C. (2011) Decoding  
23 action intentions from preparatory brain activity in human parieto-frontal networks.  
24 *Journal of Neuroscience*, *31*, 9599-9610.
- 25 Gallivan, J.P. & Culham, J.C. (2015) Neural coding within human brain areas involved in  
26 actions. *Current Opinion in Neurobiology*. *33*: 141-149.
- 27 Gallivan, J.P., McLean, D.A., Flanagan, J.R., & Culham, J.C. (2013). Where one hand meets  
28 the other: Limb-specific and action-dependent movement plans decoded from  
29 preparatory signals in single human frontoparietal brain areas. *Journal of*  
30 *Neuroscience* *33* (5): 1991-2008.
- 31 Gardner, E. P., Babu, K. S., Ghosh, S., Sherwood, A., & Chen, J. (2007). Neurophysiology of  
32 prehension. III. Representation of object features in posterior parietal cortex of the  
33 macaque monkey. *Journal of Neurophysiology*, *98*, 3708-3730.
- 34 Gaveau, V., Pisella, L., Priot, A. E., Fukui, T., Rossetti, Y., Pelisson, D., et al. (2014).  
35 Automatic online control of motor adjustments in reaching and grasping.  
36 *Neuropsychologia*, *55*, 25-40.
- 37 Glover, S. (2003). Optic ataxia as a deficit specific to the on-line control of actions.  
38 *Neuroscience and Biobehavioral Reviews*, *27*, 447-456.
- 39 Glover, S., Miall, R. C., & Rushworth, M. F. (2005). Parietal rTMS disrupts the initiation but  
40 not the execution of on-line adjustments to a perturbation of object size. *Journal of*  
41 *Cognitive Neuroscience*, *17*, 124-136.
- 42 Goodale, M. A., Pelisson, D., & Prablanc, C. (1986). Large adjustments in visually guided  
43 reaching do not depend on vision of the hand or perception of target displacement.  
44 *Nature*, *320*, 748-750.
- 45 Goodale, M.A. (2011). Transforming vision into action. *Vision Research*, *51*, 1567-1587.
- 46 Goodale, M.A. (2014). How (and why) the visual control of action differs from visual  
47 perception. *Proceedings of the Royal Society B Biological Sciences*, *281*: 2040337.
- 48 Goodale, M.A., & Milner, A.D. (1992). Separate visual pathways for perception and action.  
49 *Trends in Neurosciences*, *15*, 20-25.
- 50  
51  
52  
53  
54  
55  
56  
57  
58  
59  
60  
61  
62  
63  
64  
65



- 1 Goodale, M.A., Meenan, J.P., Bühlhoff, H.H., Nicolle, D.A., Murphy, K.J., & Racicot, C.I.  
2 (1994). Separate neural pathways for the visual analysis of object shape in perception  
3 and prehension. *Current Biology*, 4, 604-610.
- 4 Goodale, M.A., Milner, A.D., Jakobson, L.S., & Carey, D.P. (1991). A neurological  
5 dissociation between perceiving objects and grasping them. *Nature*, 349, 154-156.
- 6 Grafton, S.T. & Tunik, E. (2011). Human basal ganglia and the dynamic control of force  
7 during on-line corrections. *The Journal of Neuroscience*, 31, 1600-1605.
- 8 Gréa, H., Pisella, L., Rossetti, Y., Desmurget, M., Tilikete, C., Grafton, S., et al. (2002). A  
9 lesion of the posterior parietal cortex disrupts on-line adjustments during aiming  
10 movements. *Neuropsychologia*, 40, 2471-2480.
- 11 Hesse, C., Ball, K., & Schenk, T. (2012). Visuomotor performance based on peripheral vision  
12 is impaired in the visual form agnostic patient DF. *Neuropsychologia*, 50, 90-97.
- 13 Hesse, C., Ball, K., & Schenk, T. (2014). Pointing in visual periphery: is DF's dorsal stream  
14 intact? *PLoS One*, 9, e91420.
- 15 Himmelbach, M., Boehme, R., & Karnath, H-O. (2012) 20 years later: a second look on DF's  
16 motor behaviour. *Neuropsychologia*, 50, 139-44.
- 17 Humphrey, K., Goodale, M.A., Jakobson, L.S., & Servos, P. (1994). The role of surface  
18 information in object recognition: studies of a visual form agnostic and normal  
19 subjects. *Perception*, 23, 1457-1481.
- 20 Hwang, E.J., Hauschild, M., Wilke, M. & Andersen, R.A. (2012). Inactivation of the parietal  
21 reach region causes optic ataxia, impairing reaches but not saccades. *Neuron*, 76,  
22 1021-1029.
- 23 Jackson, S.R., Newport, R., Mort, D., & Husain, M. (2005). Where the eye looks, the hand  
24 follows: limb-dependent magnetic misreaching. *Current Biology*, 15, 42-46.
- 25 Jackson, S.R., Newport, R., Husain, M, Fowlie, J.E., O'Donoghue, M. & Bajaj, N. (2009).  
26 There may be more to reaching that meets the eye: re-thinking optic ataxia.  
27 *Neuropsychologia*, 47, 1397-1408.
- 28 James W.T., Culham J., Humphrey G.K., Milner A.D., & Goodale M.A. (2003). Ventral  
29 occipital lesion impair object recognition but not object- directed grasping: an fMRI  
30 study. *Brain*, 126, 2463-2475
- 31 Karnath, H.O., & Perenin, M.T. (2005). Cortical control of visually guided reaching:  
32 evidence from patients with optic ataxia. *Cerebral Cortex*, 15, 1561-1569.
- 33 Marotta, J.J., Behrmann, M., & Goodale, M.A. (1997). The removal of binocular cues  
34 disrupts the calibration of grasping on patients with visual form agnosia. *Experimental*  
35 *Brain Research*, 116, 113-121.
- 36 Martin, J.A., Karnath, H-O, Himmelbach, M. (2015). Revisiting the cortical system for  
37 peripheral reaching at the parieto-occipital junction. *Cortex*, 64, 363-379.
- 38 Marzocchi, N., Breveglieri, R., Galletti, C., & Fattori, P. (2008). Reaching activity in parietal  
39 area V6A of macaque: eye influence on arm activity or retinocentric coding of  
40 reaching movements? *European Journal of Neuroscience*, 27, 775-789.
- 41 McIntosh, R.D. & Brooks, J.L. (2011). Current tests and trends in single-case  
42 neuropsychology. *Cortex*, 47, 1151-1159.
- 43 McIntosh, R.D., Mulroue, A. & Brockmole, J.R. (2010). How automatic is the hand's  
44 automatic pilot? Evidence from dual-task studies. *Experimental Brain Research*, 206,  
45 257-269.
- 46 McIntosh, R. D., Dijkerman, H. C., Mon-Williams, M. & Milner, A. D. (2004). Grasping  
47 what is graspable: Evidence from visual form agnosia. *Cortex*, 40, 695-702.
- 48 McIntosh, R.D., Mulroue, A., Blangero, A., Pisella, L., & Rossetti, Y. (2011). Correlated  
49 deficits of perception and action in optic ataxia. *Neuropsychologia*, 49, 131-137.
- 50  
51  
52  
53  
54  
55  
56  
57  
58  
59  
60  
61  
62  
63  
64  
65

- 1 Michel, F., & Henaff, M.A. (2004). Seeing without the occipito-parietal cortex:  
2 Simultagnosia as a shrinkage of the attentional visual field. *Behavioral Neurology*, 15,  
3 3-13.
- 4 Milner, A. D., & Goodale, M. A. (2008). Two visual systems re-viewed. *Neuropsychologia*,  
5 46(3), 774-785.
- 6 Milner, A.D., & Goodale, M.A. (1995). *The visual brain in action*. Oxford University  
7 Press, Oxford
- 8 Milner, A.D., & Goodale, M.A. (2006). *The visual brain in action* (2nd ed.).  
9 Oxford: Oxford University Press.
- 10 Milner, A.D., & Goodale, M.A. (2008). Two visual systems re-viewed.  
11 *Neuropsychologia*, 46, 774-785.
- 12 Milner, A.D., Dijkerman, H.C., Carey, D.P. (1999). Visuospatial processing in a pure case of  
13 visual from agnosia. In: Burgess, N., JeVrey, K.J., O'Keefe, J. (eds,) *The*  
14 *hippocampal and parietal functions of spatial cognition*. Oxford University Press,  
15 Oxford, pp 443–466.
- 16 Milner, A.D., Dijkerman, H.C., McIntosh, R.D., Rossetti, Y., & Pisella, L. (2003). Delayed  
17 reaching and grasping in patients with optic ataxia. *Progress in Brain Research*, 142,  
18 225-242.
- 19 Milner, A.D., Paulignan, Y., Dijkerman, H.C., Michel, F., & Jeannerod, M. (1999). A  
20 paradoxical improvement of misreaching in optic ataxia: new evidence for two  
21 separate neural systems for visual localization. *Proceedings of the Royal Society B*,  
22 266, 2225-2229.
- 23 Milner, A.D., Perrett, D.I., Johnston, R.S., Benson, P.J., Jordan, T.R., Heeley, D.W.,  
24 Bettucci, D., Mortana, F., Mutani, R., Terazzi, E., & Davidson, D.L.W. (1991)  
25 Perception and action in 'visual form agnosia'. *Brain*, 114, 405-428.
- 26 Monaco, S., Cavina-Pratesi, C., Sedda, A., Fattori, P., Galletti, C., & Culham, J.C. (2011).  
27 Functional magnetic resonance adaptation reveals the involvement of the dorsomedial  
28 stream in hand orientation for grasping. *Journal of Neurophysiology*, 106, 2248-2263.
- 29 Monaco, S., Chen, Y., Medendorp, W.P., Crawford, J.D., Fiehler, K., & Henriques, D. Y.  
30 (2014). Functional magnetic resonance imaging adaptation reveals the cortical  
31 networks for processing grasp-relevant object properties. *Cerebral Cortex*, 24, 1540-  
32 1554.
- 33 Monaco, S., Sedda, A., Cavina-Pratesi, C., & Culham, J.C. (2015). Neural correlates of object  
34 size and object location during grasping actions. *European Journal of Neuroscience*,  
35 41, 454-465.
- 36 Mon-Williams, M., McIntosh, R.D., Milner, A.D. (2001). Vertical gaze angle as a distance  
37 cue for programming reaching: insights from visual form agnosia II (of III).  
38 *Experimental Brain Research*, 139, 137-142.
- 39 Murata, A., Gallese, V., Luppino, G., Kaseda, M., & Sakata, H. (2000). Selectivity for the  
40 shape, size, and orientation of objects for grasping in neurons of monkey parietal area  
41 AIP. *Journal of Neurophysiology*, 83, 2580-2601.
- 42 Pélisson, D., Prablanc, C., Goodale, M. A. & Jeannerod, M. (1986). Visual control of  
43 reaching movements without vision of the limb. Part II. Evidence of fast unconscious  
44 processes correcting the trajectory of the hand to the final position of a double step  
45 stimulus. *Experimental Brain Research*, 62, 303–311.
- 46 Perenin, M.T., & Vighetto, A. (1988). Optic ataxia: a specific disruption in visuomotor mechanisms. I. Different  
47 aspects of the deficit in reaching for objects. *Brain*, 111, 643-674.
- 48 Pisella, L., Binkofski, F., Lasek, K., Toni, I., & Rossetti, Y. (2006). No double-dissociation  
49 between optic ataxia and visual form agnosia: multiple sub-streams for multiple  
50 visuo-manual integrations. *Neuropsychologia*, 44, 2734-2748.

- 1  
2  
3  
4  
5  
6  
7  
8  
9  
10  
11  
12  
13  
14  
15  
16  
17  
18  
19  
20  
21  
22  
23  
24  
25  
26  
27  
28  
29  
30  
31  
32  
33  
34  
35  
36  
37  
38  
39  
40  
41  
42  
43  
44  
45  
46  
47  
48  
49  
50  
51  
52  
53  
54  
55  
56  
57  
58  
59  
60  
61  
62  
63  
64  
65
- Pisella, L., Sergio, L., Blangero, A., Torchin, H., Vighetto, A., & Rossetti, Y. (2009). Optic ataxia and the function of the dorsal stream: contributions to perception and action. *Neuropsychologia*, *47*, 3033-3044.
- Pisella, L., Striemer, C., Blangero, A., Gaveau, V., Revol, P., Salemme, R., et al. (2007). Perceptual deficits in optic ataxia? In P. Haggard, Y. Rossetti, & M. Kawato (Eds.), *Sensorimotor Foundations of Higher Cognition: Attention and Performance XXII* (pp. 47-72). Oxford: Oxford University Press.
- Pisella, L., Gréa, H., Tilikete, C., Vighetto, A., Desmurget, M., Rode, G., Boisson, D., & Rossetti, Y. (2000). An 'automatic pilot' for the hand in human posterior parietal cortex: toward reinterpreting optic ataxia. *Nature Neuroscience*, *3*, 729-736.
- Prado, J., Clavagnier, S., Otzenberger, H., Scheiber, C., Kennedy, H., & Perenin, M.T. (2005). Two cortical systems for reaching in central and peripheral vision. *Neuron*, *48*, 849-858.
- Reichenbach, A., Bresciani, J.P., Peer, A., Bulthoff, H.H., & Thielscher, A. (2011). Contributions of the PPC to online control of visually guided reaching movements assessed with fMRI-guided TMS. *Cerebral Cortex*, *21*, 1602-1612.
- Rice, N.J., McIntosh, R.D., Schindler, I., Mon-Williams, M., Demonet, J-F., & Milner, A.D. (2006). Intact automatic avoidance of obstacles in patients with visual form agnosia. *Experimental Brain Research*, *174*, 176-188.
- Rice, N.J., Edwards, M.G., Schindler, I., Punt, D.T., McIntosh, R.D., Humphreys, G.W., Lestou, V., & Milner, A.D. (2008). Delay abolishes the obstacle avoidance deficit in unilateral optic ataxia. *Neuropsychologia*, *46*, 1549-1557.
- Rice, N.J., Tunik, E., & Grafton, S.T. (2006). The anterior intraparietal sulcus mediates grasp execution, independent of requirement to update: New insights from transcranial magnetic stimulation. *Journal of Neuroscience*, *26*, 8176-8182.
- Rice, N.J., Tunik, E., Cross, E.S., & Grafton, S.T. (2007). On-line grasp control is mediated by the contralateral hemisphere. *Brain Research*, *1175*, 76-84.
- Rossetti, Y., Pisella, L., & Vighetto, A. (2003). Optic ataxia revisited: visually guided action versus immediate visuomotor control. *Experimental Brain Research*, *153*, 171-179.
- Rossetti, Y., Revol, P., McIntosh, R., Pisella, L., Rode, G., Danckert, J., et al. (2005). Visually guided reaching: Bilateral posterior parietal lesions cause a switch from fast visuomotor to slow cognitive control. *Neuropsychologia*, *43*, 162-177.
- Rossetti, Y., Malhotra, P., Muir, K., Duncan, G., Reeves, I., Birschel, P., & Harvey, M. (2009). The neural basis of visuomotor deficits in hemispatial neglect. *Neuropsychologia*, *47*, 2149-2153.
- Rossetti, Y., McIntosh, R.D., Malhotra, P., Butler, S.H., Muir, K., & Harvey, M. (2012). Attention in action: evidence from on-line corrections in left visual neglect. *Neuropsychologia*, *50*, 1124-35.
- Rossetti, Y., McAdam, T., McLean, D.A., Goodale, M.A., & Culham, J.C. (2013). fMRI reveals a lower visual field preference for hand actions in human superior parieto-occipital cortex (SPOC) and precuneus. *Cortex*, *49*, 2525-2541.
- Schenk, T., & McIntosh, R.D. (2010). Do we have independent visual streams for perception and action? *Cognitive Neuroscience*, *1*, 52-63.
- Schenk, T. (2010). Visuomotor robustness is based on integration not segregation. *Vision Research*, *50*, 2627-2632.
- Schindler, I., Rice, N.J., McIntosh, R.D., Rossetti, Y., Vighetto, A., & Milner, A.D. (2004). Automatic avoidance of obstacles is a dorsal stream function: Evidence from optic ataxia. *Nature Neuroscience*, *7*, 779-784.
- Stark, A., Zohary, E. (2008). Parietal mapping of visuomotor transformations during human tool grasping. *Cerebral Cortex*, *18*, 2358-2368.

- 1 Steeves, J.K.E., Culham, J.C., Duchaine, B.C., Cavina-Pratesi, C., Valyear, K.F., Schindler,  
2 I., Humphrey, G.K., Milner, A.D., & Goodale, M.A. (2006). The fusiform face area is  
3 not sufficient for face recognition: evidence from a patient with dense prosopagnosia  
4 and no occipital face area. *Neuropsychologia*, *44*, 594-609.
- 5 Striener, C., Blangero, A., Rossetti, Y., Boisson, D., Rode, G., Vighetto, A., et al. (2007).  
6 Deficits in peripheral visual attention in patients with optic ataxia. *NeuroReport*, *18*,  
7 1171-1175.
- 8 Striener, C.L., Locklin, J., Blangero, A., Rossetti, Y., Pisella, L., & Danckert, J. (2009).  
9 Attention for action? Examining the link between attention and visuomotor control  
10 deficits in a patient with optic ataxia. *Neuropsychologia*, *47*, 1491-1499.
- 11 Tunik, E., Frey, S.H., & Grafton, S.T. (2005). Virtual lesions of the anterior intraparietal area  
12 disrupt goal-dependent on-line adjustments of grasp. *Nature Neuroscience*, *8*, 505-  
13 511.
- 14 Tunik, E., Rice, N.J., Hamilton, A., & Grafton, S.T. (2007). Beyond grasping: representation  
15 of action in human anterior intraparietal sulcus. *Neuroimage*, *36*, 77-86.
- 16 Vesia, M., Prime, S.L., Yan, X., Sergio, L.E., & Crawford, J.D. (2010). Specificity of human  
17 parietal saccade and reach regions during transcranial magnetic stimulation. *Journal*  
18 *of Neuroscience*, *30*, 13053-13065.
- 19 Whitwell, R.L., Milner, A.D., & Goodale, M.A. (2014). The two visual systems hypothesis:  
20 new challenges and insights from visual form agnostic patient DF. *Frontiers in*  
21 *Neurology*, *5*, 255.
- 22  
23  
24  
25  
26  
27  
28  
29  
30  
31  
32  
33  
34  
35  
36  
37  
38  
39  
40  
41  
42  
43  
44  
45  
46  
47  
48  
49  
50  
51  
52  
53  
54  
55  
56  
57  
58  
59  
60  
61  
62  
63  
64  
65

Figure 1  
[Click here to download high resolution image](#)

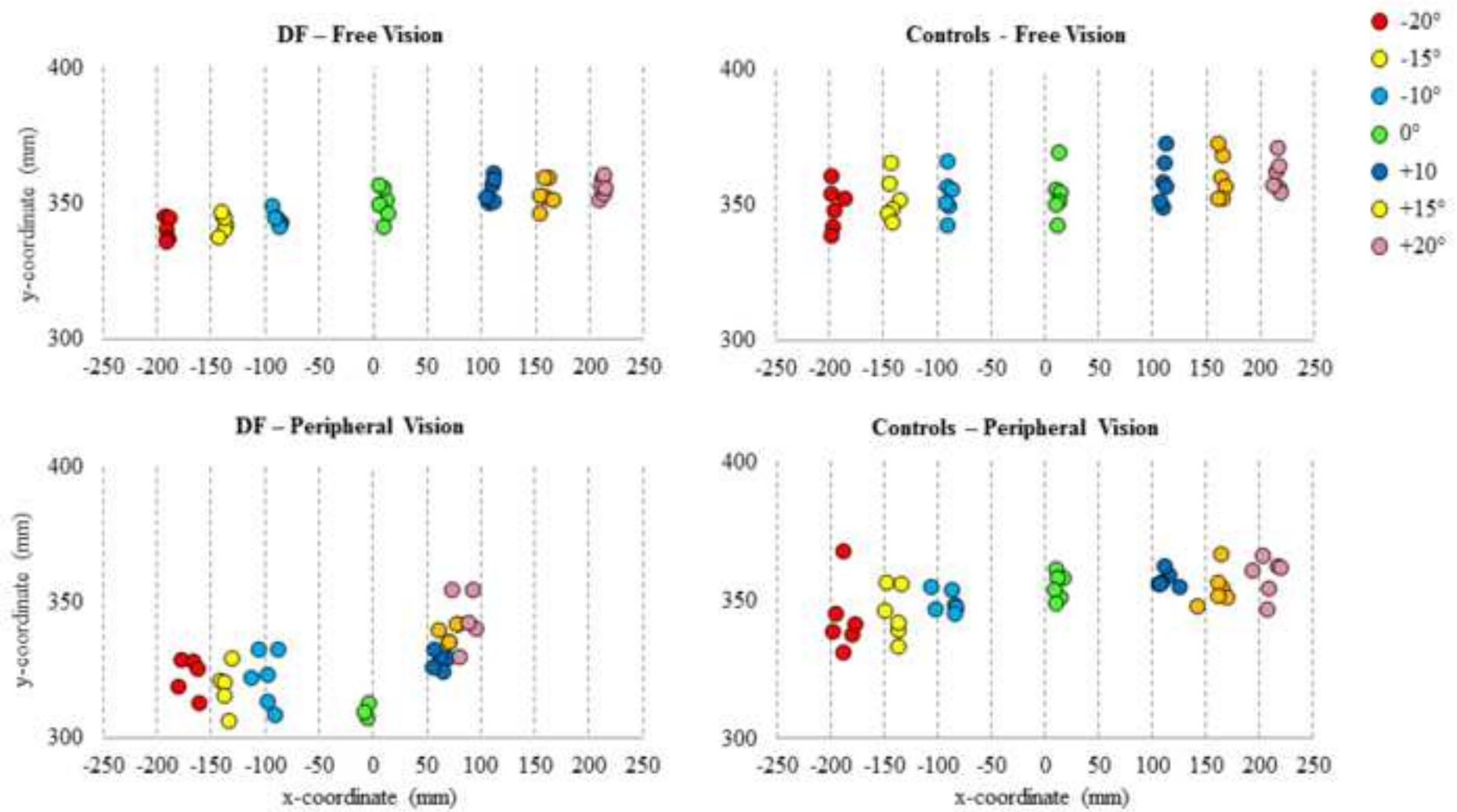


Figure 2  
[Click here to download high resolution image](#)

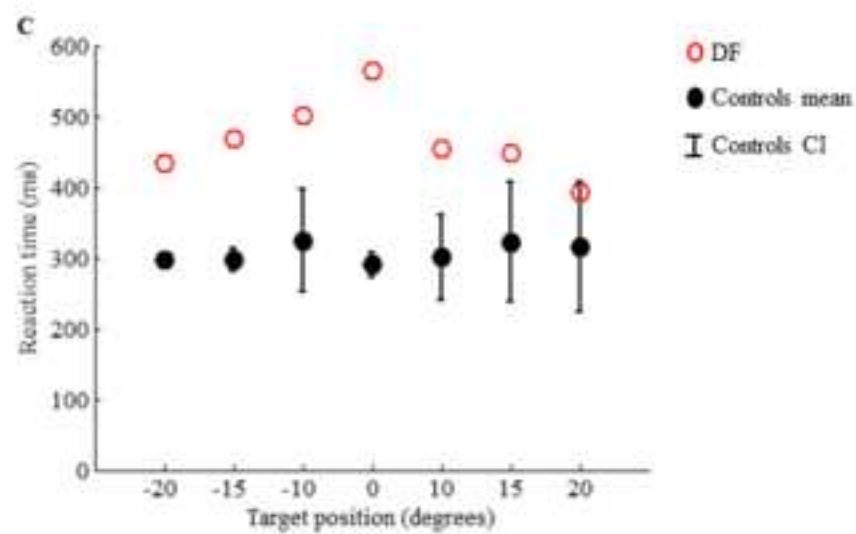
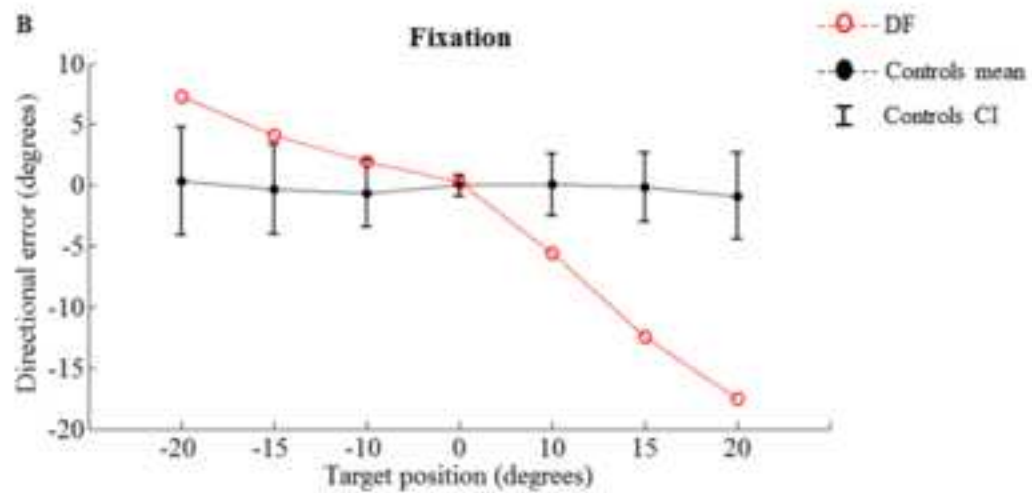
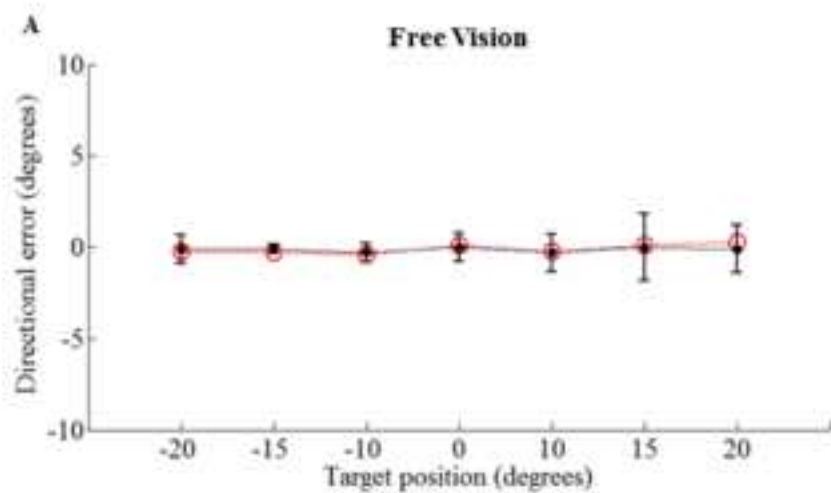


Figure 3  
[Click here to download high resolution image](#)

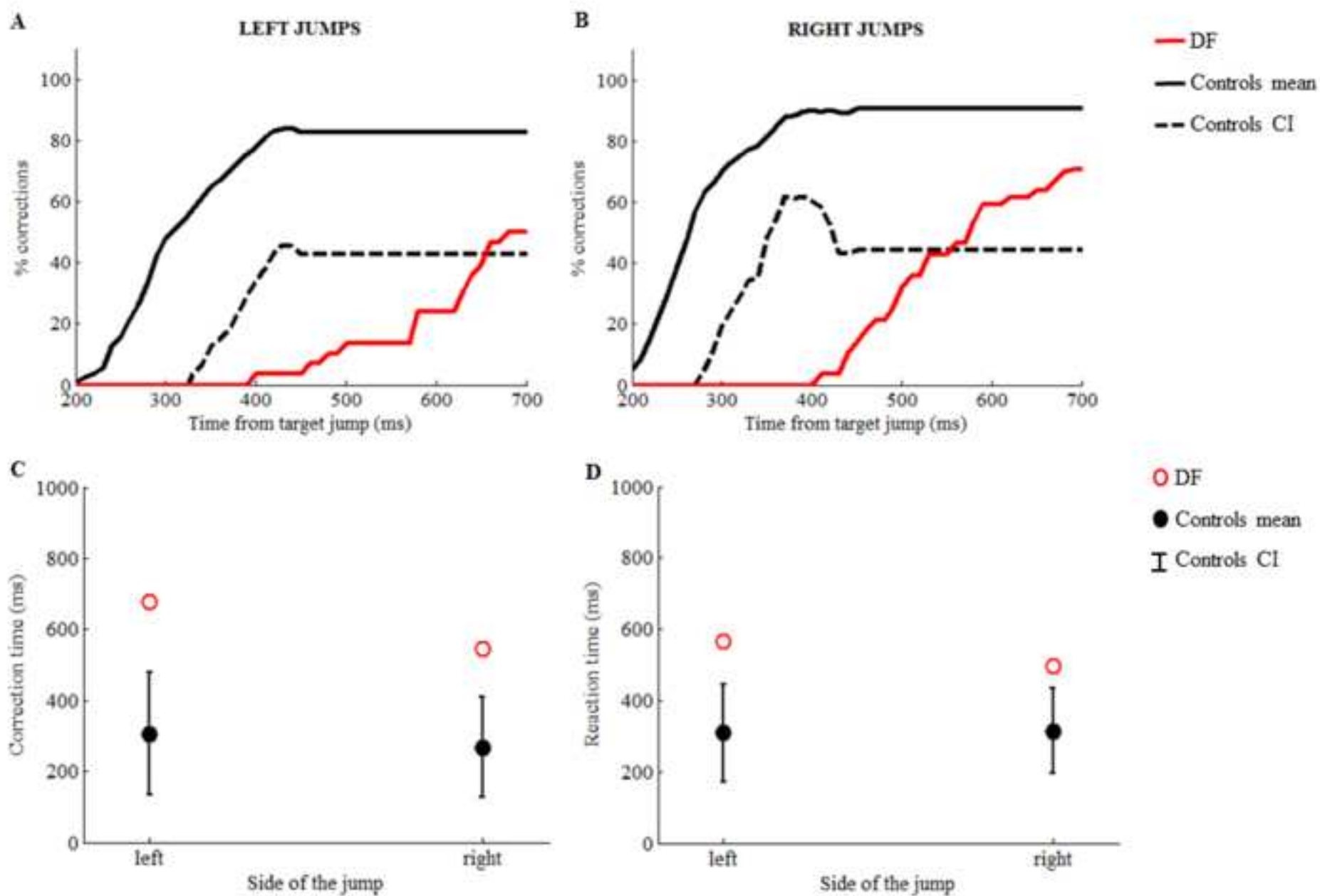


Figure 4  
[Click here to download high resolution image](#)

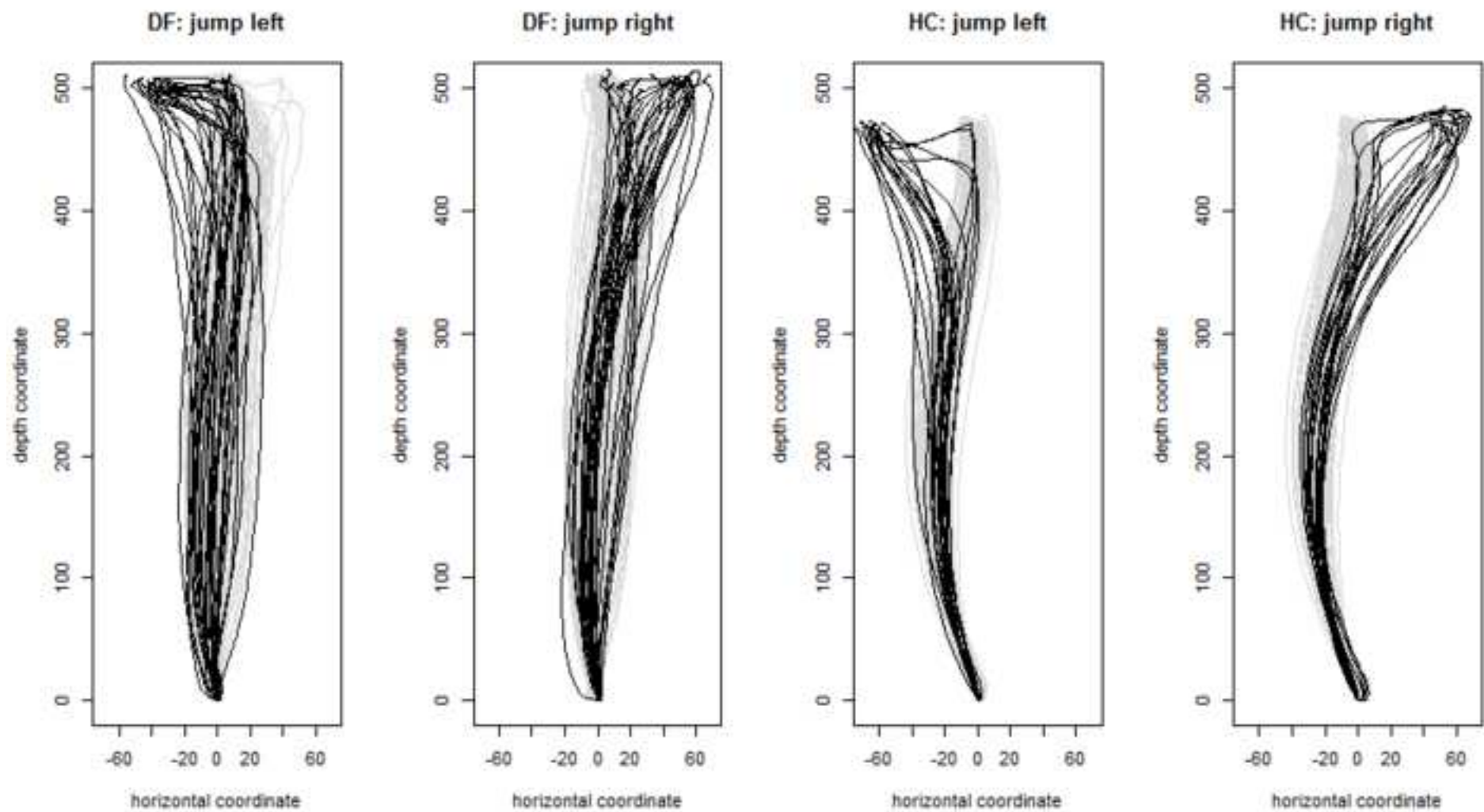




Figure 5  
[Click here to download high resolution image](#)

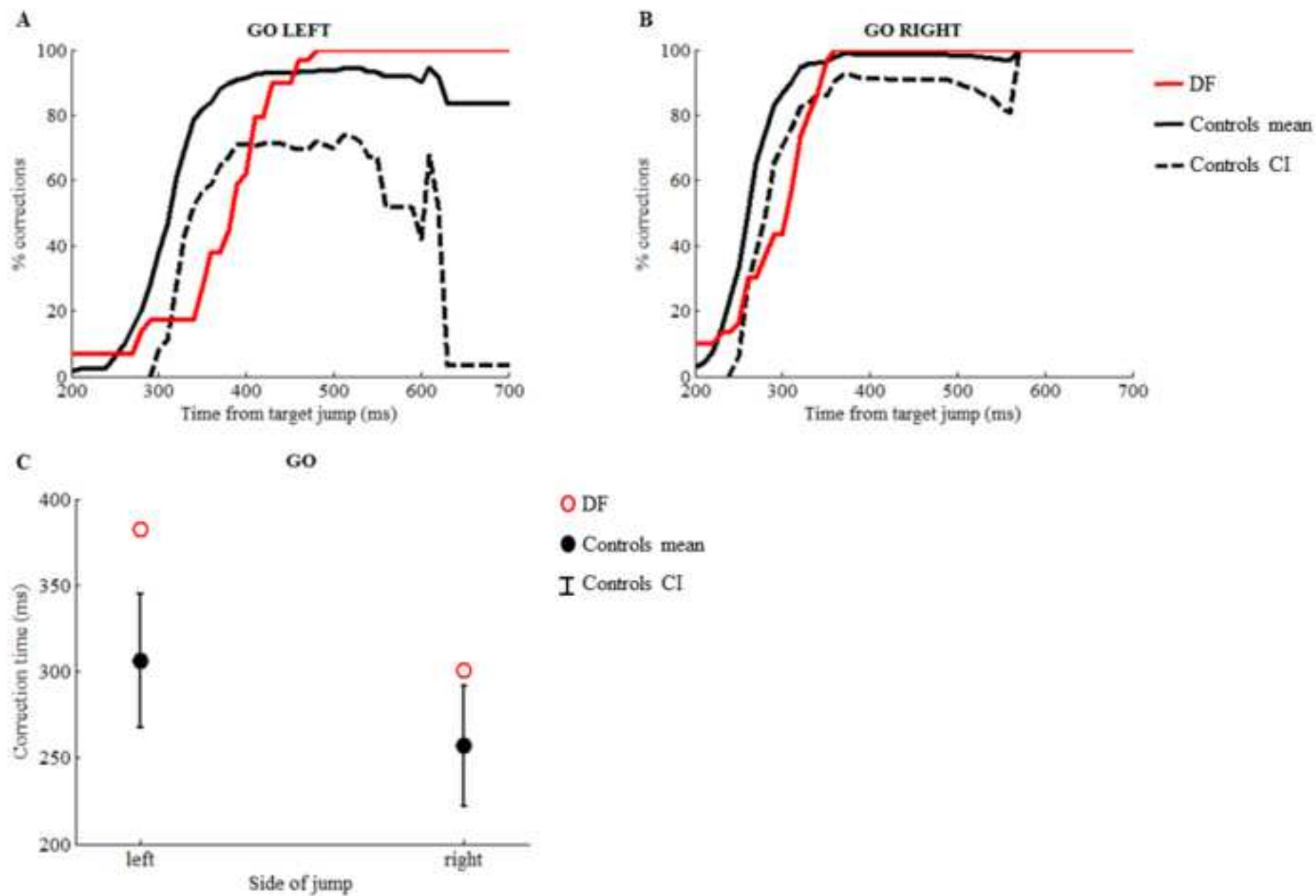


Figure 6  
[Click here to download high resolution image](#)

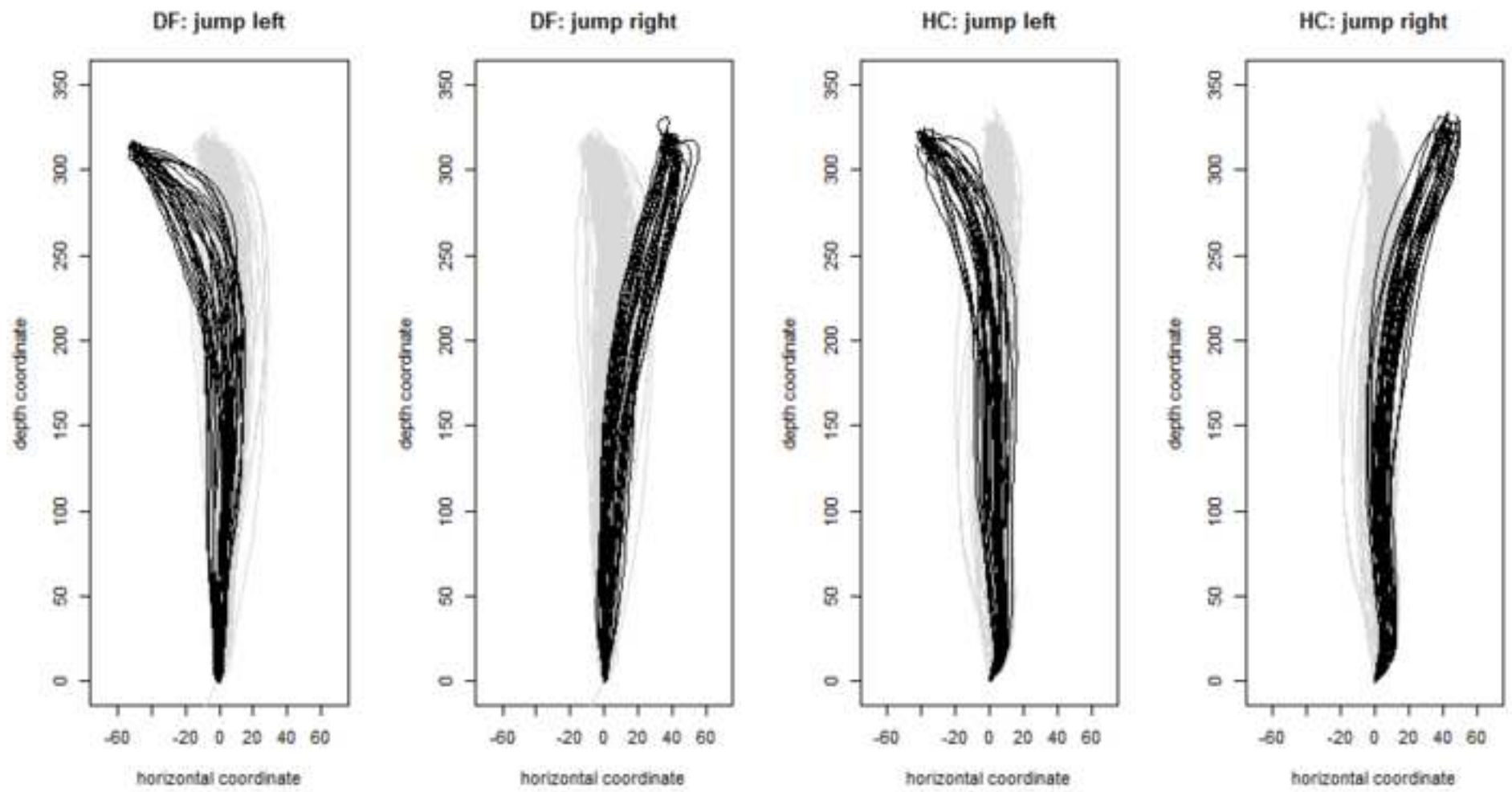


Figure 7  
[Click here to download high resolution image](#)

