

Exchange relations between Fijians and Euro-Americans (1774-1854), with reference to museum collections

Stéphanie Leclerc-Caffarel

Volume II: Appendices

Ph.D. Thesis

University of East Anglia

**Sainsbury Research Unit
for the Arts of Africa, Oceania and the Americas**

September 2013

© This copy of the thesis has been supplied on condition that anyone who consults it is understood to recognise that its copyrights rests with the author and that use of any information derived there must be in accordance with current UK Copyright Law. In addition, any quotation or extract must include full attribution.

Contents

Appendices

Introduction to the object-files	3
Auckland Museum	4
British Museum	8
Cambridge University Museum	12
Danish National Museum	17
Dunkerque, Musée des Beaux-Arts	18
Fiji Museum	19
Göttingen University Museum	24
Musée du Quai Branly	25
National Museum of Natural History (SI)	38
Peabody Essex Museum	97
Pitt Rivers Museum	113

Introduction to the object-files

The following files have been extracted from a working database, initially built for comparison and analysis purposes. In link with what has been exposed in chapter 6, this device was conceived as a website. It was built using only open source solutions, based on *Joomla*® website design tool. The main plugin is *Sigsiu Online Business Index* (SOBI)®, which has been modified to allow an easier management of the objects. All of the information and architecture are stored in a local *mysql* database, which would allow an easy transfer to an online version on the web if wanted.

This is a work in process.

There is one file for each artefact illustrated in volume I, chapters 1-5 (see list of illustrations). The files have been arranged alphabetically, according to their current location, and subsidiary sorted by object types.

AM-Breastplate-14867



Photo S. Leclerc-Caffarel © AM

Designation: Breastplate

Vernacular Name: *Civa*

Use(s): Chiefly chest ornament

Current location: Auckland Museum - Auckland (New Zealand)

Current inventory number: 14867

Other numbers: O202

Description: Very interesting and unusual breastplate. Sun-like arrangement of 6, originally 7, rectangular pieces of pearlshell (mother-of-pearl) around a central disk also in pearlshell. These are nailed onto a *civa* breastplate (a breastplate in the shape of a large oyster shell) made of whalebone. One of the rectangular elements now missing. Upon the central disk of pearlshell there is a piece of whale ivory, also with a solar shape. It is nailed to the two other materials (whalebone and pearl shell). This patterns reminds some *masi* or tapa cloth decorative patterns (*senivutu*). All around the “sun” in pearl shell goes two metal wires that look like they have been sawn onto the breastplate. The whalebone breastplate itself is nice. It shows the usual serrations on its rounded edge while the triangular top part is plain. Those designs are evocative of an actual oyster shell, called *civa* in Fiji. The bone has been well worn, polished, oiled and probably smoked, as one can guess from the nice reddish patina at the back of the artefact. Where the serrations and rim in light relief stop, two holes have been drilled for suspension purpose. Nowadays, two little pieces of European cord link the breastplate to rough braided cord in coconut fibres(?). Two pieces of metal wire are visible at the base of each cord; maybe reminiscent of an old display(?). Nail remains where the pearlshell piece is missing. The ivory piece has been pierced at its top and broken. It too has a polished and smoked aspect. This may be an example of how highly valued material could be reused and reassemble into a new valuable artefact (*iyau*). The reference to Micronesia probably comes from a disputable provenance attributed to a quite similar whalebone plate in the Museum’s collection (AM n°15873). Such whalebone breastplates are likely from Western Polynesia (see Clunie 1986: fig.116; 2013:167). Wire rotten and partially damaged and missing. Pearlshell damaged. Rivets intact.

Dimensions: 15cm ø. Ivory section 3,5cm ø. Pearlshell circular piece 7,5cm ø; Rectangular piece of pearlshell about 2cm long

Previous collections/owners: T. W. Leys Memorial Collection

Labels/inscriptions: On the back: rich reddish colour. Rivets neat and in quite good condition. Rectangular label (ink on paper): “Fiji Island. Micronesian influence N°O202” + “GA” in another ink. In black IDN°

Related documentation: AM's catalogue card

Bibliography:

Clunie, F., 2013. Tapua: ‘Polished Ivory Shrines’ of Tongan Gods. *Journal of the Polynesian Society*, 122(2), p.161-203.

Clunie, F., 1986. *Yalo I Viti, Shades of Viti: a Fiji Museum Catalogue*, Suva, Fiji: Fiji Museum. Fig.116.

Found: Yes **Seen:** Yes **Examination/Search date:** 18th June 2010

AM-Breastplate-31496



Photo S.Leclerc-Caffarel © AM

Designation: Breastplate

Vernacular Name: *Civatabua*

Use(s): Chiefly chest ornament

Current location: Auckland Museum - Auckland (New Zealand)

Current inventory number: 31496

Other numbers: Accession number: 128150, Oldman n°600

Description:

Nice breastplate (*civatabua*). 9 pieces of whale ivory assembled in the shape of a large oyster shell (*civa*). The assemblage technique is neat. It is visible from front of the object, although carefully hidden by means of tiny pieces of ivory, plugged in attachment holes. The back shows a very nice reddish patina that may indicate that the ivory was smoked and oiled as is often the case for prestigious pieces, and that the artefact was frequently worn as a body ornament. The strings that mend the pieces together seem to be the originals. From the back, traces of the carver's tools are visible. On its rounded edge the breastplate is carved with small serrations at intervals and a light rim. The top part is flat with a little rim almost worn out. One tiny triangular piece of ivory seems to be missing at the top. The AM's catalogue indicates ten pieces of ivory. Braided cord of *vau* (hibiscus) inner bark attached to the top of the artefact.

Materials: Whale ivory, vegetable fibres, including hibiscus bast (*vau*)

Dimensions: 24.5 x 28 cm

Provenance: Fiji islands

Previous collections/owners: Deposit Department of Internal Affairs in 1950. Ex-Oldman collection

Related documentation: AM's catalogue card

Bibliography:

Oldman, W.O., 1943. *The Oldman Collection of Polynesian Artefacts*, New Plymouth, New-Zealand: Polynesian Society. p.59

Found: Yes

Seen: Yes

Examination/Search date: 23rd June 2010

Notes and comments: In permanent display in June 2010

AM-Breastplate-31498



Photo S. Leclerc-Caffarel © AM

Designation: Breastplate

Vernacular Name: *Civavonovono*

Use(s): Chiefly chest ornament

Current location: Auckland Museum - Auckland (New Zealand)

Current inventory number: 31498

Other numbers: 523; Accession number 128150

Description: Nice breastplate (*civavonovono*). Central piece of pearlshell, nicely cut and polished, framed with six pieces of whale ivory and inlaid with four pieces of whale ivory. One piece has a solar or flower shape, and there are one star and two birds. They are arranged symmetrically onto the shell, which creates a nice contrast of colours. The ivory have been nicely carved and polished to perfectly fit the shell. The assemblage technique is precise, inspired from Samoan/Tongan canoe builders' techniques. It is not visible from the front. The surface of the shell is damaged in its superior part. Some original fibres, used to mend the pieces together, seem to have been replaced in museum.

Materials: Oyster pearlshell, whale ivory, vegetable fibres

Provenance: Fiji islands

Previous collections/owners: Deposit from Department of Internal Affairs-1950. Ex-Oldman collection (n°523)

Related documentation: AM's catalogue card

Bibliography:

Oldman, W.O., 1943. *The Oldman Collection of Polynesian Artefacts*, New Plymouth, New-Zealand: Polynesian Society. Pl.61

Found: Yes

Seen: Yes

Examination/Search date: 23rd June 2010

Notes and comments: On display in 2010

AM-Club-31837



Photo by S. Leclerc-Caffarel © Auckland Museum

Designation: Club

Current location: Auckland Museum - Auckland (New Zealand)

Current inventory number: 31837

Other numbers: Accession number 128150

Description: Long wooden club, carved from one piece dark hardwood. Long shaft topped with a rounded conical head. The head and top of the shaft are carved with hatching in low relief. The shaft flares up at both extremities. The base is carved with dots in the shape of 11 triangles.

Provenance: ?

Previous collections/owners: Oldman collection

Related documentation: Catalogue card of the Auckland Museum

Bibliography:

Oldman, W.O., 1943. *The Oldman Collection of Polynesian Artefacts*, New Plymouth, New-Zealand: Polynesian Society. Cat. n°601

Found: Yes

Seen: Yes

Examination/Search date: 21st June 2010

Notes and comments: From card: "Extremely old specimen reputed to have been brought to England by Captain Vancouver in 1795." NB: Vancouver did not visit Fiji.

BM-Breastplate-Oc1931.0714.32



Photo S. Leclerc-Caffarel © BM

Designation: Breastplate

Vernacular Name: *Civatabua*

Use(s): Chest ornament for chiefs

Current location: British Museum - London (UK)

Current inventory number: Oc1931.0714.32

Description:

Fine specimen of *civatabua*, i.e. *civa* (shell/breastplate) made of *tabua* (whale ivory). The four pieces of ivory that compose that ornament are attached together by the mean of iron nails. This is a rather modern trend. Yet, the assemblage is very close from canoe building techniques illustrated by Clunie (1986: fig.23) and used on the earlier specimens of *civatabua* known (Clunie 1986: fig.117). Nails were much used on Fijian breastplates from the late 1840s onwards. A short cord of vegetable fibres go through three small lugs at the flat part of the breastplate.

Materials: Whale ivory, metal nails, vegetable fibres

Techniques: Canoe building technique for planking

Dimensions: 19.5x19.5cm; 1.5cm thick

Place of collecting/exchange: Fiji islands

Previous collections/owners: Allardyce collection, accessioned by BM in 1931

Labels/inscriptions: Old label, stuck on modern museum tag, reads: "Obtained during 'Little War' (Fiji) from Rewa warrior who lost it at the sacking of Malawavali" + "Allardyce 1931" (in pencil)

Bibliography:

Clunie, F., 1986. *Yalo I Viti, Shades of Viti: a Fiji Museum Catalogue*, Suva, Fiji: Fiji Museum.

Found: Yes

Seen: Yes

Examination/Search date: 16th Sep 2011

BM-Club-Oc,LMS.191



Photo S. Leclerc-Caffarel © BM

Designation: Club

Current location: British Museum - London (UK)

Current inventory number: Oc,LMS.191

Other numbers: Oc1890,Loan; Oc1911C27.191

Description: Tags says Samoa, which seems accurate due to triangular lug for attachment on butt of the club, which is rather typical of Samoan weapons. Shaft wrapped with *magimagi* cord on which many dangling strings are attached. Each terminates with one shell bead. There is a piece of white barkcloth underneath the *magimagi* lashing. Carved decoration on the top of the shaft. *bowai/povai* like club (baseball bat shape). Dense hardwood, perhaps iron wood (?), quite light in colour. Carving seemed unfinished. A few cracks.

Materials: Hardwood (*nokonoko?*), coconut sennit (*magimagi*), shell discs

Dimensions: 106 cm long

Previous collections/owners:

London Missionary Society. On loan at the BM from 1890 and eventually accessioned by the BM in 1911.

Related documentation: Old catalogue card, for LMS loan to the BM

Found: Yes

Seen: Yes

Examination/Search date: 16th Sep 2011

BM-Headdress-Oc6612



Photo S. Leclerc-Caffarel © BM

Designation: Head ornament

Current location: British Museum - London (UK)

Current inventory number: Oc6612

Other numbers: Oc1870C0324.319; Oc1870C1.6612

Description: Headdress made of a structure of light wood and small sticks, wrapped with red wool and topped with (rooster's) feathers

Materials: Wood, wool, feathers

Dimensions: 71 x 20 (diametre) x 46 cm

Provenance: Rotuma

Date of collecting/exchange: 1865

Circumstances of collecting/exchange: J.L. Brenchley, voyage of the *Curacoa* (1865)

Previous collections/owners: Julius Lucius Brenchley

Bibliography:

Brenchley, J.L., 1873. *Jottings during the cruise of H.M.S. Curaçoa among the south See Islands in 1865*, London: Longmans, Green.

Found: Yes

Seen: Yes

Examination/Search date: 16th September 2011

BM-Temple-Oc1960,11.37



Photo S. Leclerc-Caffarel © BM

Designation: Miniature Temple

Vernacular Name: *Burekalou*

Current location: British Museum - London (UK)

Current inventory number: Oc1960,11.37

Description:

Built with same structure as other *burekalou* seen. Wood frame with *magimagi* coming out of top where a horizontal wood piece is lashed to top. Red seeds, some with a black bottom (*diridamu* or *leredamu*) along with Job's tears seeds. Interesting how seeds make patterns - similar to drawings of Fijian "oracles" seen in 1840 (Wilkes 1845, III:95). Clear coloured seeds seems to make the patterns, within those grey seeded lines are red seeds. Seeds are stuck onto frame with a vegetable paste, looks like there are 2 different types. One is possibly breadfruit paste, like the house from Kew (n°59911). Some traces of transparent glue evident - repairs? Many seeds missing from narrow sides of house. Open door on one side. Top beam was probably covered with seeds but most are missing now, except on back side. Seeds form a thick white border around bottom of roof. Back of house shows linear designs.

Materials: Wood, coconut sennit (*magimagi*), vegetable paste or gum, seeds (*Abrus precatorius* & *Coix lacryma jobi*)

Dimensions: 43cm high, 15cm wide and 8cm deep

Provenance: Fiji islands

Date of collecting/exchange: 1860-61

Circumstances of collecting/exchange: Collected by B. Seemann during his botanical mission to Fiji (1860-61).

Previous collections/owners:

Berthold Seemann; Kew Gardens (transferred to BM in 1960)

Labels/inscriptions:

Rectangular handwritten label in bag reads: "Oracle house covered with the seeds of *Abrus precatorius* and *Leleacline*(?)"

Archives: Seemann, B., 1862. *Viti : an account of a government mission to the Vitian or Fijian Islands 1860-1861*, Cambridge: MacMillan and Co.

Found: Yes **Seen:** Yes **Examination/Search date:** 26th July 2011

Notes and comments:

Bigger than Kew's specimen, also from Seemann (n°59911).

Seemann described such items as follows (1862:377):

"The greyish bony involucre of the Sila, or Job's tears (*Coix Lacryma Jobi*, Linn.), a grass growing in swamp and having the aspect of Indian-corn, as well as the seeds of the *Diridamu*, *Qiridamu*, or *Leredamu* (*Ahrus precatorius*, Linn.), which resemble those of the *Drala* (*Erythrina Indica*, Linn.) in having a bright red colour and a black spot, are affixed with breadfruit gum to the outside of certain oracle boxes, of which Wilkes has given fair illustrations in his 'Narrative of the U.S. Exploring Expedition.' These boxes have a more or less pyramidal shape, and are kept in the temples, as the supposed abode of the spirit consulted through the priests."

CUMAA-Breastplate-1918.213.14



Photo © CUMAA

Designation: Breastplate
Vernacular Name: *Civavonovono*
Use(s): Breast ornament and status symbol.

Current location: Cambridge University Museum of Archaeology and Anthropology - Cambridge (UK)

Current inventory number: 1918.213.14

Other numbers: Z 2730

Description: Large circular breastplate composed of six sections of whale ivory creating a circular frame around a central motif formed of a crescent-shaped piece of black-lipped oyster shell, a small triangular piece of turtle shell, and four geometrical pieces of whale ivory at the top (a large trapezoidal piece, a very small triangle, a large rectangle and a smaller rectangle). The right hand side of the pearlshell piece is heavily chipped. Along the outer edge, the width of the breastplate is serrated. At the top of the breastplate, two holes are used to secure two lengths of 3-ply plaited hibiscus fibre, tied together with a knot. The edges of the shell piece are pierced with very small holes and attached to small holes pierced in the width of the whale ivory at the back. European string, metal threads and lengths of old conservation mesh seem to be keeping the various elements of the breastplate in place. At the front, the whale ivory is of a light cream colour while at the back, it has a dark honey shade. (Description by Lucie Carreau, CUMAA, Oct. 2012)

Materials: Oyster shell (*civa*), metal threads, hibiscus fibres (*vau*), turtle shell, whale ivory, European cord
Dimensions: [with cord:] 33.3 cm high; [breastplate:] 28 cm diameter max., 4.5 cm thick approx. (CUMAA)

Circumstances of collecting/exchange: Gordon most likely received it as a 'royal' gift from Cakobau. (Hooper 2006:252, cat. no.238)

Previous collections/owners: Tanoa Visawaqa (owner); Seru Epinesa Cakobau (owner); Sir Arthur C.H. Gordon (collector)

Bibliography:

Clunie, F., 1983. Tanoa Visawaqa's Breastplate. *Domodomo*, 1(3), p.123-125.

Herle, A. & Carreau, L. (eds.), 2013. *Chiefs and Governors: Art and Power in Fiji*, Cambridge, U.K.: Museum of Archaeology and Anthropology University of Cambridge. pp.73-74, fig.5.1.

Hooper, S., 2006. *Pacific Encounters: art & divinity in Polynesia 1760-1860*, London: The British Museum Press. p.252, cat. no.238.

Osborn, J.W., 1833. *Journal of the Emerald*. Canberra: Pacific Manuscripts Bureau. Mf.n°225 (Ts.) and 205 (Ms.)

Wilkes, C., 1845. *Narrative of the United States exploring expedition during the years 1838, 1839, 1840, 1841, 1842*, Philadelphia, Lea & Blanchard.p.58

Notes and comments: "This large composite breastplate (*civavonovono*) is of the kind which began to be made in the early decades of the nineteenth century by Tongan/Samoan canoe builders working in the service of Fijian Chiefs. The techniques of manufacture of breastplates and canoe hulls are similar, with binding on the inside invisible from the outside. Clunie (1983) has identified this as the breastplate worn by Tanoa Visawaqa, Vunivalu of Bau and father of Seru Cakobau, when he was sketched by Alfred Agate during the Wilkes expedition's visit to Fiji in 1840... Gordon most likely received it as a 'royal' gift from Cakobau." (Hooper 2006: 252, cat. no.238)

CUMAA-Necklace-Z2770



Photo Herle & Carreau 2013, p.94 © CUMAA

Designation: Neck ornament

Current location: Cambridge University Museum of Archaeology and Anthropology - Cambridge (UK)

Current inventory number: Z2770

Description: Necklace of plaited hibiscus (possibly combined with ?European string or ?vegetable fibre); the plaited cord has been wound around a central fibre core to create a thick semi-circular section, knotted at each end with loosely twisted lengths of plaited ?European string or ?vegetable fibre extending to form the cords that tie around the neck. 19 lengths of plaited ?vegetable fibre or ?European string closely strung with white shell beads hang from the semi circular section. One bead carved from whale tooth is placed near the end of each shell-bead length followed by a small section of shell beads; these whale tooth beads vary in shape between circular, rectangular and square. Each length then terminates in a whale tooth carved in the shape of a fish. The fish carving has a bead shaped projection extending from the head, some of which have one or two lines carved around them, through which a hole has been drilled to pass the plaited cord through. The fifth shell-bead length from the left has two small sections of dark beads (one in the centre and one between the whale tooth bead and the fish carving) probably carved from coconut. The fish carving has broken off just below the bead shaped projection on the sixth shell-bead length from the left and there is also no whale tooth bead on this length. The seventh shell-bead length from the left has one dark coconut bead half way down the length. The eighth shell-bead length from the left has one dark coconut bead immediately above the fish carving. (Description by Lucie Carreau, CUMAA)

Materials: Whale ivory, vegetable fibres, including hibiscus bast (*vau*), shell, coconut

Dimensions: [when laid out:] 30 cm wide; 10.5 cm wide (of semi circular top section), 61.6 cm long (CUMAA)

Place of collecting/exchange: Fiji islands

Date of collecting/exchange: 1875 or 1876

Previous collections/owners: Sir Arthur Hamilton Gordon, Governor of Fiji

Archives: Watercolour by Constance Gordon-Cumming in 1876

Bibliography:

Leclerc-Caffarel, S., 2013. Fish Pendant Necklace. In A. Herle & L. Carreau, *Chiefs and Governors*. Cambridge: Museum of Archaeology and Anthropology, p.93-94.

Found: Yes

Seen: Yes

Examination/Search date: 15th March 2010

CUMAA-Needle-Z2781b



Photo S. Leclerc-Caffarel © CUMAA

Designation: Needle

Use(s): Looks like a needle (*isau*) rather than a scratcher (*imilamila*) because of the hole at its larger end

Current location: Cambridge University Museum of Archaeology and Anthropology - Cambridge (UK)

Current inventory number: Z_2781_B

Other numbers: 1923.H105

Description: Thin triangular piece of turtle shell. One end pointy, the other rectangular and pierced with one circular hole. Flat, and tapering towards pointed end.

Materials: Turtle shell

Dimensions: 13 cm long, 1.2 cm wide, 0.2 cm thick

Place of collecting/exchange: Fiji islands

Date of collecting/exchange: 1870s

Previous collections/owners: Baron Anatole von Hügel, received by CUMAA 1923

Found: Yes

Seen: Yes

Examination/Search date: 15th March 2010

CUMAA-Ornament-Z2716



Photo S.Leclerc-Caffarel © CUMAA

Designation: Ear ornament

Vernacular Name: *Saunidaliga*

Use(s): see Clunie & Ligairi (1983)

Current location: Cambridge University Museum of Archaeology and Anthropology - Cambridge (UK)

Current inventory number: Z 2716

Other numbers: 1923.H108

Description: Hollowed out tube of shell curving slightly upwards at each end. There is a semi-circular chip on one edge and minor chipping on both edges. (Description Lucie Carreau, CUMAA)

Materials: Shell

Dimensions: 9.2 cm long; 1 cm diameter

Weight: 29 g

Provenance: Fiji islands

Place of collecting/exchange: Fiji islands

Date of collecting/exchange: 1870s

Circumstances of collecting/exchange: Acquired by Baron Anatole Von Hügel

Previous collections/owners: Von Hügel, Anatole

Labels/inscriptions: '1923.H108.' and 'Z-2716' inscribed in black ink on the object

Bibliography:

Clunie, F. & Ligairi, W., 1983. Fijian Earlobe Slitting and Distortion. *Domodomo*, 1(1), p.22-44.

Found: Yes

Seen: Yes

Examination/Search date: 15th March 2010

Notes and comments: Rare type of ear ornament. One specimen quite close in Salem (PEM E5363), acquired by B. Vanderford in the early 1820s

CUMAA-Pendant-Z2722G



Photo S. Leclerc-Caffarel © CUMAA

Designation: Pendant

Current location: Cambridge University Museum of Archaeology and Anthropology - Cambridge (UK)

Current inventory number: Z 2722 G

Description: Whale ivory pendant, in the shape of a turtle. The head of the turtle is pierced for suspension.

Materials: Whale ivory

Dimensions: 4.5 cm long, 3.4 cm wide

Weight: 10.6 g

Place of collecting/exchange: Fiji islands

Date of collecting/exchange: 1870s

Previous collections/owners: Baron Anatole Von Hügel, donated to CUMAA in 1923

Bibliography:

Illustrated in Herle, A. & Carreau, L. (eds.), 2013. *Chiefs and Governors: Art and Power in Fiji*, Cambridge, U.K.: Museum of Archaeology and Anthropology University of Cambridge. p.15 fig.2.15.

Found: Yes

Seen: Yes

Examination/Search date: 15th March 2010

DNM-Rattle-I.1251



Photo from J. Walsh's personal archives

Designation: Rattle

Use(s): Oracle? (Wilkes 1845)

Current location: Danish National Museum - Copenhagen (Denmark)

Current inventory number: I.1251

Other numbers: Peale Catalogue Number : 1820; previous NMNH number: E003007

Description: COCONUT WITH HUSK CARVED AWAY LEAVING TWO RAISED RIDGES WHICH FORM A CROSS. THE EXPOSED UNDER LAYERS OF THE COCONUT WERE COVERED WITH RED SEEDS (*ABRA PRENTARIA*) WHICH WERE EMBEDDED IN A RESIN OR WAX. THERE IS A SMALL CORD OF BRAIDED COCONUT FIBER ATTACHED. THE DRIED INTERIOR OF THE COCONUT RATTLES WHEN SHAKEN. (Catalogue card: SI)

This item has not been examined. Yet, by comparison with other seeded artefacts from Fiji, one may think that the seeds were *sila* or Job's tears (*Coix lacryma jobi*) and *diridamu* or *leredamu* seeds (*Abrus precatorius*), glued onto the object by mean of a vegetable gum made out of root crops or breadfruit (*uto*).

Materials: Coconut husk, vegetable resin or gum, seeds (*Abrus precatorius* and *Coix lacryma jobi*)

Dimensions: 16.5 x 11.5 cm (Walsh's personal archives)

Provenance: Fiji islands

Date of collecting/exchange: 1840

Circumstances of collecting/exchange: US Exploring Expedition

Related documentation: Online SI Ex.Ex. cultural objects database:

http://www.sil.si.edu/digitalcollections/usexex/navigation/Anthropology/object_explore.cfm

Archives: Peale catalogue (1846)

Bibliography: Seemann, B., 1862. *Viti : an account of a government mission to the Vitian or Fijian Islands 1860-1861*, Cambridge: MacMillan and Co.

Seen: No

Notes and comments:

Exchanged with DNM and located there in the 1980s by Dr Jane Walsh (NMNH)

In the early 1860s, Berthold Seemann described such objects as follows, just after a description of seeded miniature *burekalou*:

“Toys, consisting of cocoa-nut shells, and covered with these materials, are occasionally seen in the hands of native children, and they have rather a pretty effect.” (Seemann 1862:377-378)

Dunkerque-Mat-Blazy493



Photo by S. Leclerc-Caffarel © Musée des Beaux Arts, Dunkerque (France)

Designation: Mat

Current location: Musée de Beaux Arts - Dunkerque (France)

Current inventory number: Blazy 493

Description: Small rectangular mat of pandanus, finely woven, with decorative insertions of European fibres (wool?) of several shades. Fringed at both narrow ends.

Dimensions: 85 cm long

Provenance: Tonga islands

Place of collecting/exchange: Tongatapu

Date of collecting/exchange: 23rd March-9th April 1793

Circumstances of collecting/exchange: Voyage in search of La Pérouse, commanded by Antoine Bruni d'Entrecasteaux (1791-94). D'Entrecasteaux and his men stationed off Tongatapu from 23rd March to 9th April 1793.

Bibliography:

Jacquemin, S., 1994. Des objets océaniques rescapés de l'expédition d'Entrecasteaux (1791-1794). *Journal de la Société des Océanistes, Paris: Musée de l'Homme*, 99(2), p.207-208.

Found: Yes

Seen: Yes

Examination/Search date: 19th May 2011

Notes and comments: Early artefact with European fibres instead of feathers

FM-Dolls-58.16-18



Photos S. Leclerc-Caffarel
© FM

Designation: Dolls

Current location: Fiji Museum - Suva (Fiji)

Object numbers/parts: 3

Description: Three wooden dolls, with articulated limbs and wearing three different kind of Fijian dresses. One is dressed as a “Fijian girl” (58.18). She wears a *liku* skirt and a few Fijian-like ornaments made of glass beads (necklace and armband). The second is dressed with a typically Fijian piece of dark *masi*, underneath which a small mat is visible (58.16). According to Derrick it was the outfit of women of rank, but the FM’s catalogue card reads: “figurine or doll, articulated limbs, black tapa cloth, dressed as a chief.” The last one (58.17) is wrapped in a *gatu*-like *masi*, i.e. a thick bark-cloth with rubbed designs (*gatu vakatoga*). Derrick suggested it was dressed “as a Fijian chief” (Larsson 1960:104). The catalogue card indicates: “dressed as a lady of high rank.” The features of their faces have been carved and painted. Their body is painted in brown. Their hair is now missing.

Materials: Wood, metal, glass beads, *vau* (hibiscus), barkcloth, pandanus (*voivoi*), pigments, paint

Dimensions: 58.16: 34 cm high; 58.17-18: 27 cm high

Date of collecting/exchange: Before 1854

Circumstances of collecting/exchange: Part of Lyth collection. R.B. Lyth was a Wesleyan missionary in Tonga and then Fiji (1839-1854)

Previous collections/owners: Richard B. Lyth

Related documentation: FM's catalogue cards, FM's register book (volume 1940-1977)

Bibliography:

Larsson, K.E., 1960. *Fijian studies*, Göteborg: Ethnografiska Museet.

Found: Yes

Seen: Yes

Examination/Search date: 26th April 2010

FM-Figure-86.65

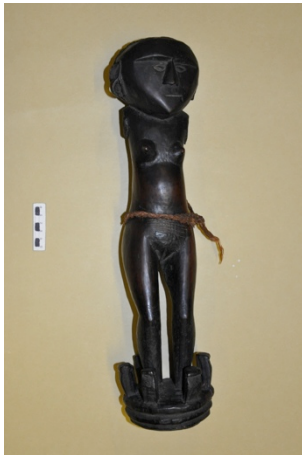


Photo S. Leclerc-Caffarel © FM

Designation: Wooden Figure
Vernacular Name: *Matakau*; Buinakauvadra
Use(s): Basket hanger

Current location: Fiji Museum - Suva (Fiji)
Current inventory number: 86.85

Description: Female figure, in dark heavy wood. She seems to be standing on a platform surrounded with cylindrical lugs, that served has hooks. The face is triangular and its features quite schematic. The body is more naturalistic. The arms have been cut off at the shoulders. The pubis hairs are represented in carving. At waist, the figure wears a small *liku* skirt, that seems to miss a lot of its original fringes. One of its ear lobe is dissented and seems to be large enough to welcome a ear ornament of some sort (*saunidaliga*). On the figure's back, two old labels are stuck on. Two holes underneath the base.

Materials: Wood, vegetable fibres

Place of collecting/exchange: Fiji islands

Date of collecting/exchange: Before 1854

Circumstances of collecting/exchange: Acquired by R. B. Lyth, Wesleyan missionary in Fiji from 1839 to 1854

Previous collections/owners: R.B. Lyth

Labels/inscriptions:

Two old labels stick on the back of the figure:

- "15"
- "Bui ni Kauvandra - a Fijian goddess."

Related documentation: FM's register book (volume 1982-90)

Archives: Lyth's list of curiosities: "A Feejeean idol — a goddess named Bui na Kauvandra — her arms were cut off in a war with gods — she is said to be the grandmother of other deities, hence her name. Such images are not known to be worshipped in Feejee"

Bibliography:

Clunie, F., 2003. *Yalo i Viti: A Fiji Museum Catalogue*, Suva, Fiji: Fiji Museum. Reprint. fig.128

Lyth, R.B. n.d. List of curiosities, in *Tongan and Fijian Reminiscences*. Sydney: Mitchell Libray. Mf.B549.

Found: Yes

Seen: Yes

Examination/Search date: 20th July 2010

FM-Figure-2000.547



Photo S. Leclerc-Caffarel © FM

Designation: Wooden Figure
Vernacular Name: *Matakau*

Current location: Fiji Museum - Suva (Fiji)
Current inventory number: 2000.547

Description: Wooden female figure, quite stubby, made of one solid piece of dense heavy wood. Its face is triangular. Two holes for the eyes. Underneath bears the inscription: "Given to John Hunt 1812-1848".

Materials: Wood

Date of collecting/exchange: Between 1838 and 1848

Circumstances of collecting/exchange: Acquired by John Hunt, Wesleyan missionary in the Fiji islands from December 1838

Previous collections/owners: J. Hunt (1812-1848)

Labels/inscriptions: In pencil, underneath the figure's base: "Given to John Hunt 1812-1848"

Bibliography:

Larsson, K.E., 1960. *Fijian studies*, Göteborg: Ethnografiska Museet.

Found: Yes

Seen: Yes

Examination/Search date: 13th April 2010

Notes and comments: The original number of this item has been lost. In terms of style, it can be compared with one specimen at CUMAA (Z2812), illustrated by Larsson (1960:46, fig.15)

FM-Pendant-82.300



Photo S. Leclerc-Caffarel © FM

Designation: Shell pendant

Vernacular Name: *iTaube ni vakamau*; *iTaubesici*

Use(s): Used as a wedding ornament for the bride

Current location: Fiji Museum - Suva (Fiji)

Current inventory number: 82.300

Description: Shell pendant, made of a section of trochus shell (*sici*), carefully cut and polished in the shape of a circular boar tusk (*batinivuaka*), pointed at one end and rounded at the other. The pendant is pierced at its rounded end for suspension purpose.

Materials: Trochus shell (*sici*)

Provenance: Ono-i-Kadavu, Fiji Islands

Place of collecting/exchange: Waimaro

Date of collecting/exchange: 1982

Related documentation:

FM's register book, volume 1982-90:

"*i taube ni vakamau, i taube ni sici*. Trochus shell pendant shaped like a boar tusk pendant by a *mataisau* of Vabea, Ono-i-Kadavu, who gave it as a wedding necklace for Bulou Salote who married Semisi of Lomai, Waimaro, 1966. Her grandmother made a string for it and tied it about her neck for the wedding. After the wedding it was kept wrapped in *masi* with other wedding artefacts, in a grass basket made by her grandmother for the purpose, and later in a bundle of mats. Presented by Semisi Baleca (66), m. Nateiwai(?), t.t. Nasalotu, Waimaro. Lomai 1982 (field n°1)."

Found: Yes

Seen: Yes

Examination/Search date: 26th April 2010

FM-Telescope-78.1564



Photo S. Leclerc-Caffarel © FM

Designation: Telescope

Current location: Fiji Museum - Suva (Fiji)

Current inventory number: 78.1564

Description: Old European telescope, made of a wooden tube, glass lenses and metallic parts at both ends, lightly corroded.

Materials: Metal, wood, glass

Place of collecting/exchange: Fiji islands

Date of collecting/exchange: 1840

Circumstances of collecting/exchange: US Exploring Expedition, led by cap. Wilkes (1838-42). Spent several months in Fiji in 1840

Previous collections/owners: Ratu Mara, probably Mara Kapaiwai (d. 1859), Bauan chief and rebel, nephew of Tanoa Visawaqa and cousin of Cakobau, who had him executed in 1859. *Vasu* of Lakeba.

Labels/inscriptions:

In white on the side of the telescope:

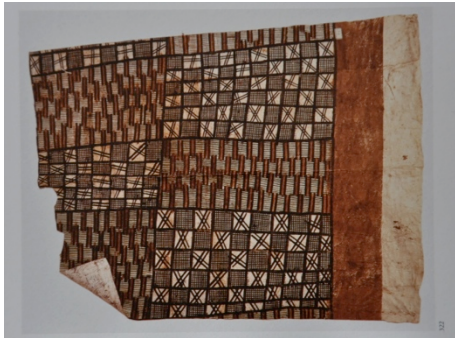
“ TELESCOPE OF RATU MARA
PRESENT FROM THE UNITED
STATES EXPLORING EXPEDITION 1838-42 “

Found: Yes

Seen: Yes

Examination/Search date: 19th April 2010

Göttingen-Barkcloth-OZ577



Source: Kaeppler 2009:202, fig.322.

Designation: Barkcloth

Current location: Institut für Völkerkunde der Universität - Göttingen

Current inventory number: OZ 577

Description: Small piece of Western Polynesian barkcloth, that seems to have been cut. It is decorated with painted chequered designs.

Materials: Barkcloth, pigments

Dimensions : 82 x 100 cm

Place of collecting/exchange: Tonga islands

Date of collecting/exchange: 1770s

Circumstances of collecting/exchange: Cook's voyages in the 1770s

Bibliography:

Kaeppler, A. (ed.), 2009. *James Cook and the Exploration of the Pacific*, London: Thames & Hudson. p. 202, fig. 322

Found: Yes

Seen: No

MQB_Paris-Necklace-72.56.730



Photo © MQB

Designation: Necklace

Use(s): Polished oyster shells of that kind (*civa*) were often worn as a single pendant but seldom so numerous on the same support. This object was probably very valuable prior to its exchange/collect with/by the crew the *Astrolabe*

Current location: Musée du Quai Branly - Paris (France)

Current inventory number: 72.56.730

Other numbers: 658 or 659; 2189-3215 or 2190-3216; 56.730; SG.56.730

Description: Necklace made of five polished oyster shells linked together with a vegetable fibre cord.

Materials: Pearlshells; vegetable fibres

Dimensions: 34 x 40 x 2.5 cm **Weight:** 341 g

Place of collecting/exchange: Fiji islands

Date of collecting/exchange: 1827 (between 24 May and 11 June)

Circumstances of collecting/exchange: Dumont d'Urville's first expedition on the *Astrolabe* (1826-29).

Previous collections/owners:

- J.S.C Dumont d'Urville, who donated this object around 1830 to the French Royal Administration.
- Naval Museum (Musée de Marine), Louvre, Paris. First inventory number 658 or 659 circa. 1830 (Duhamel du Monceau's inventory). Second inventory number in 1856: 2190-3216 or 2189-3215 (Morel-Fatio's inventory).
- National Museum of Archaeology (Musée d'Archéologie Nationale), Saint-Germain-En-Laye. Inventory number: 56.730.
- National Museum for the Art of Africa and Oceania (Musée National des Arts d'Afrique et d'Océanie), Paris. Deposit in 1992. Inventory number: SG.56.730.
- Musée du Quai Branly, Paris. Inventory number: 72.56.730

Related documentation:

MQB's online catalogue: <http://www.quaibranly.fr/cc/pod/recherche.aspx?b=1&t=1>

Bibliography:

Leclerc, S., 2008. Les collections fidjiennes françaises : l'exemple des collectes Dumont-D'urville. M.A. dissertation, Paris: Ecole du Louvre.

Found: Yes

Seen: No

Notes and comments: This object and 72.56.731 were probably collected/exchanged at the same time. They have been often mixed in the inventories, which could explain the variations on the above-mentioned inventory numbers.

This object is currently on display in the permanent exhibition of the Musée du Quai Branly (last seen in 2013).

MQB_Paris-Necklace-72.56.731



Photo © MQB

Designation: Necklace

Use(s): Polished pearlshells of that kind (*civa*) were often worn as a single pendant but seldom so numerous on the same support. Exceptional polish and serrations. This object was probably very valuable prior to its exchange/collect with/by the crew the *Astrolabe*.

Current location: Musée du Quai Branly - Paris (France)

Current inventory number: 72.56.731

Other numbers: 658 or 659; 2189-3215 or 2190-3216; 56.731; SG.56.731

Description: This necklace is made of 4 polish and carved pearlshells. The shape of each shell may remind that of a turtle shell.

Materials: Pearlshells; vegetable fibres

Dimensions: 12 x 50 x 1.88 cm **Weight:** 143 g

Place of collecting/exchange: Fiji islands

Date of collecting/exchange: 1827 (between 24 May and 11 June)

Circumstances of collecting/exchange: Dumont d'Urville's first expedition on the *Astrolabe* (1826-29).

Previous collections/owners:

- J.S.C Dumont d'Urville donated this object around 1830 to the French Royal Administration.
- Naval Museum (Musée de Marine), Louvre, Paris. First inventory number 658 or 659 circa. 1830 (Duhamel du Monceau's inventory). Second inventory number in 1856: 2190-3216 or 2189-3215 (Morel-Fatio's inventory).
- National Museum of Archaeology (Musée d'Archéologie Nationale), Saint-Germain-En-Laye. Inventory number: 56.731.
- National Museum for the Art of Africa and Oceania (Musée National des Arts d'Afrique et d'Océanie), Paris. Deposit in 1992. Inventory number: SG.56.731.
- Musée du Quai Branly, Paris. Inventory number: 72.56.731

Related documentation:

MQB's online catalogue: <http://www.quaibrantly.fr/cc/pod/recherche.aspx?b=1&t=1>

Bibliography:

Leclerc, S., 2008. Les collections fidjiennes françaises : l'exemple des collectes Dumont-D'urville. M.A. dissertation, Paris: Ecole du Louvre.

Found: Yes

Seen: No

Notes and comments: This object and MQB 72.56.730 were probably collected/exchanged in the same time. They have been often mixed in inventories, which could explain variations of inventory numbers.

MQB-Club-72.53.436



Photo © MQB

Designation: Throwing club

Vernacular Name: *iula tavatava vonotabua*

Current location: Musée du Quai Branly - Paris (France)

Current inventory number: 72.53.436

Description: Throwing club made of dense hard wood of light colour, with two star-shaped incrustations of ivory (most likely whale ivory) at head and butt

Materials: Hardwood (iron wood, *nokonoko?*), whale ivory

Dimensions: 42.8 x 9.6 cm

Weight: 621 g

Provenance: Fiji islands

Place of collecting/exchange: Fiji islands

Date of collecting/exchange: Between 13th and 28th October 1838

Circumstances of collecting/exchange: Acquired during Dumont d'Urville's second survey of Fiji (October 1838). Brought back to France on the corvette *Zélée*.

Related documentation: MQB's online catalogue: <http://www.quaibranly.fr/cc/pod/recherche.aspx?b=1&t=1>

Bibliography:

Leclerc, S., 2008. Les collections fidjiennes françaises : l'exemple des collectes Dumont-D'urville. M.A. dissertation. Paris: Ecole du Louvre. Volume 2, p.306

Found: Yes

Seen: Yes

Examination/Search date: 10th Feb 2010

MQB-Club-72.53.455



Photo © MQB

Designation: Club

Vernacular Name: *Cali* or *Sali vividrasa*

Current location: Musée du Quai Branly - Paris (France)

Current inventory number: 72.53.455

Description: Club made of hardwood. Its blade is pierced with two sets of affronted triangles. Its shaft is covered with fine braided of *magimagi* (coconut coir sennit), natural and black.

Materials: Hardwood (*nokonoko*), coconut sennit (*magimagi*), pigment

Dimensions: 116 cm long x 37 cm wide x 8 cm deep

Provenance: Fiji islands

Place of collecting/exchange: Fiji islands

Date of collecting/exchange: Between 13th and 28th October 1838

Circumstances of collecting/exchange: Dumont d'Urville's second survey of Fiji (October 1838).

Related documentation: MQB's online catalogue: <http://www.quaibranly.fr/cc/pod/recherche.aspx?b=1&t=1>

Bibliography:

Leclerc, S., 2008. Les collections fidjiennes françaises : l'exemple des collectes Dumont-D'urville. M.A. dissertation. Paris: Ecole du Louvre. Volume 2, p.283

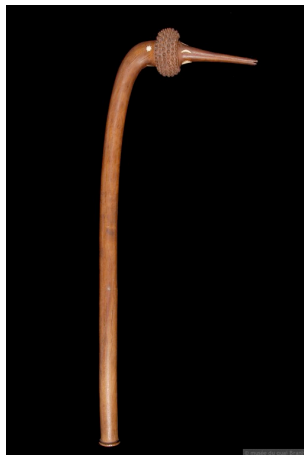
Found: Yes

Seen: Yes

Examination/Search date: 11th February 2010

Notes and comments: This type of decor, with affronted triangles pierced through the blade of clubs, has been found only in 1830s-1840s museum collections, to date.

MQB-Club-72.84.269



Photograph © MQB

Designation: Club

Vernacular Name: *Totokia vonotabua*

Use(s): Battle hammer

Current location: Musée du Quai Branly - Paris (France)

Current inventory number: 72.84.269

Description:

Two-handed club made of iron wood (*nokonoko*). The club is inlaid with whale ivory at the base of its beak and below its bulbous head, on the top of the shaft. The inlays were very neatly made in the shape of stars and moon crescents, which matches an early period of making, when whale ivory was rare in Fiji, highly valued and chiefly manufactured by Tongan and Samoan craftsmen with a typical *maestria*. There is a large inlay, in the shape of a sun or star at the bottom of the shaft. The beak shows traces of an embedded piece, now missing. The shaft is undecorated.

Materials: Hardwood (*nokonoko*), whale ivory

Dimensions: 93 x 9.9 x 31 cm

Weight: 1850 g

Place of collecting/exchange: Fiji islands

Date of collecting/exchange: 1827

Circumstances of collecting/exchange: Although its museum history is unclear, this item was most likely acquired during Dumont d'Urville's first survey of Fiji in 1827. It was indeed represented in the atlas of d'Urville's narrative (Dumont d'Urville 1830-35, Atlas I, plate XC).

Bibliography:

Dumont d'Urville, Jules S. C., 1830-35. *Voyage de la corvette l'Astrolabe exécuté par ordre du Roi pendant les années 1826-1827-1828 et 1829 sous le commandement de M. J. Dumont d'Urville, capitaine de vaisseau*, Paris: J. Tastu. Atlas I, plate XC.

Jacquemin, S., 1992. *Rao : Polynésies*, Paris: éditions Parenthèses, RMN. p.50.

Leclerc, S., 2008. Les collections fidjiennes françaises : l'exemple des collectes Dumont-D'urville. M.A. dissertation. Paris: Ecole du Louvre. p.177

Leclerc, S., 2007. Les objets fidjiens du Musée du Quai Branly, dépôt du Musée des Antiquités Nationales de Saint-Germain-en-Laye. M.A. dissertation. Paris: Ecole du Louvre. p.74 & 217.

Found: Yes **Seen:** Yes **Examination/Search date:** 10th Feb 2010

Notes and comments: Rare and early item

MQB-Necklace-72.56.243



Photo © MQB

Designation: Neck ornament

Current location: Musée du Quai Branly - Paris (France)

Current inventory number: 72.56.243

Description: Necklace made of small cowry shells (*Umbilical ovula*), individually attached to a cord of braided white barkcloth (*masi*)

Materials: Shell, barkcloth

Dimensions: 12 x 26.5 x 3.8 cm

Provenance: Fiji islands

Place of collecting/exchange: Fiji islands

Date of collecting/exchange: Between 13th and 28th October 1838

Circumstances of collecting/exchange: Acquired during Dumont d'Urville's second survey of Fiji (October 1838). Part of the collections transported by the *Zélée*

Bibliography:

Leclerc, S., 2008. Les collections fidjiennes françaises : l'exemple des collectes Dumont-D'urville. MA dissertation. Paris: Ecole du Louvre. Volume 2, p.318.

Found: Yes

Seen: Yes

Examination/Search date: 10th Feb 2010

MQB-Necklace-72.56.245



Photo © MQB

Designation: Neck ornament

Current location: Musée du Quai Branly - Paris (France)

Current inventory number: 72.56.245

Description: Necklace made of a twisted cord of *vau* (inner bark of the *Hibiscus*), to which two rows of small white shells (from a kind of sea snails) are attached.

Materials: Shell, vegetable fibres (*vau*)

Dimensions : 11 x 22.5 x 3 cm

Weight: 74 g

Provenance: Fiji islands

Place of collecting/exchange: Fiji islands

Date of collecting/exchange: Between 13th and 28th October 1838

Circumstances of collecting/exchange: Acquired during Dumont d'Urville's second survey of Fiji (October 1838). Part of the collections transported by the *Zélée*

Bibliography:

Leclerc, S., 2008. Les collections fidjiennes françaises : l'exemple des collectes Dumont-D'urville. MA dissertation. Paris: Ecole du Louvre. Volume 2, p.318.

Found: Yes

Seen: No

MQB-Necklace-72.56.723



Photo © MQB

Designation: Neck ornament

Current location: Musée du Quai Branly - Paris (France)

Current inventory number: 72.56.723

Description: Necklace made of 25 lower jaws of flying-fox (*beka*) bats. These are carefully attached, one by one, to a cord of *vau* (*Hibiscus* inner bark).

Materials: Jaws of flying-fox bats, vegetable fibres, including *vau* (hibiscus)

Dimensions: 14,5 x 20 x 3.8 cm

Weight: 57 g

Provenance: Fiji islands

Date of collecting/exchange: Between 13th and 28th October 1838

Circumstances of collecting/exchange:

Acquired during Dumont d'Urville's second survey of Fiji (October 1838). Part of the collections transported by the *Zélée*.

From d'Urville's narrative: "The ornaments of the Viti islands are as in the Tongan islands, and almost in all the islands of Oceania, necklaces made of shells, pigs' tusks and rats' jaws..." « (Dumont d'Urville 1841-54, IV :261)

Bibliography:

Clunie, F., Ligairi, W. & Williams, A., 1983. Taurailiu: netting Fiji fruit bats. *Domodomo*, 1983(1), p.78-80.

Derrick, R.A., 1957. *A History of Fiji* Reprint., Suva, Fiji: Government Press.

Dumont d'Urville, J.S.C., 1841. *Voyage au pôle sud et dans l'Océanie sur les corvettes l'Astrolabe et la Zélée, exécuté pendant les années 1837-1838-1839-1840, sous le commandement de J. Dumont d'Urville, capitaine de vaisseau, publié par ordonnance de Sa Majesté*, Paris: Gide.

Leclerc, S., 2008. Les collections fidjiennes françaises : l'exemple des collectes Dumont-D'urville. MA dissertation. Paris: Ecole du Louvre. Volume 2, p.321.

Found: Yes **Seen:** Yes **Examination/Search date:** 10th Feb 2010

Notes and comments: Rare artefact. Only one close specimen found in early museum collections, at the PRM, Oxford (1884.99.15).

Beka are likely to have been important *tabu* animals in some places of Fiji. In some places, their hunting was surrounded with *tabu* and, like shark and turtle fishing, it required specific skills (Clunie et al. 1983). In Rewa, their flight was also imitated in dances (*meke*) (Derrick 1957:17).

MQB-Pottery-72.56.733



Photo © MQB

Designation: Drinking vessel

Vernacular Name: *saqa*

Use(s): Drinking vessel

Current location: Musée du Quai Branly - Paris (France)

Current inventory number: 72.56.733

Description: Earthen pot in the shape of a rounded crescent. The pot is carved with decorative incisions on its shoulders. Its surface is glazed, by the mean of a vegetable resin (*makadre*) applied on the pot before it cools down, after the firing. Red colour of earth

Materials: Clay, resin (*makadre*)

Dimensions: 19.5 x 28 x 18.8 cm

Weight: 1268g

Provenance: Fiji islands

Circumstances of collecting/exchange: Most likely acquired by Eugène du Bouzet in October 1838 when he visited Fiji as the second-in-command of the corvette *Zélée*, commander Jacquinet. Expedition Dumont d'Urville

Previous collections/owners: Collector, donor: Eugène du Bouzet. Collection given to the Naval Museum (Musée de Marine), Louvre (Paris) in 1873

Related documentation: MQB's online catalogue: <http://www.quaibranly.fr/cc/pod/recherche.aspx?b=1&t=1>

Archives: Old inventory of the Naval museum, Louvre (Morel Fatio II)

Bibliography:

Leclerc, S., 2007. Les objets fidjiens du Musée du Quai Branly, dépôt du Musée des Antiquités Nationales de Saint-Germain-en-Laye. M.A. dissertation. Paris: Ecole du Louvre. p.200

Found: Yes

Seen: No

Examination/Search date: 2007

MQB-Pottery-72.56.734



Photo © MQB

Designation: Drinking vessel

Vernacular Name: *saqa*

Use(s): Drinking vessel

Current location: Musée du Quai Branly - Paris (France)

Current inventory number: 72.56.734

Description: Earthen pot, in the shape of a rounded bottle, with decorative patterns on its upper part (shoulders). The surface is glazed, by the mean of a vegetable resin (*makadre*) applied on the pot before it cools down, after the firing.

Materials: Clay, resin (*makadre*)

Techniques: Pottery

Dimensions: 27 cm diametre x 31.8 cm high

Weight: 2269 g

Provenance: Fiji islands

Place of collecting/exchange: Fiji islands

Date of collecting/exchange: Between 13th and 28th October 1838

Circumstances of collecting/exchange: Acquired during Dumont d'Urville's second survey of Fiji (October 1838), brought back to France on the *Astrolabe*

Related documentation: MQB's online catalogue: <http://www.quaibranly.fr/cc/pod/recherche.aspx?b=1&t=1>

Bibliography:

Leclerc, S., 2008. Les collections fidjiennes françaises : l'exemple des collectes Dumont-D'urville. M.A. dissertation. Paris: Ecole du Louvre. Volume 2, p.295

Found: Yes

Seen: No

Examination/Search date: 2007

MQB-Shovel-72.53.446



Photo © MQB

Designation: Spade

Vernacular Name: *iSivi*

Current location: Musée du Quai Branly - Paris (France)

Current inventory number: 72.53.446

Description: Shovel made of a kind of oyster shell of translucent, brown colour and a wooden shaft with a forked end, and another pointed. The shell is pierced of one large hole and attached to the wooden fork by mean of coconut sennit cord (*magimagi*). The attachment is secured with coconut bast. The blade is broken in several pieces. The bottom of the shaft is damaged (one piece has broken off).

Materials: Shell, wood, coconut sennit (*magimagi*)

Dimensions: 65 x 15 x 4 cm

Weight: 285 g

Place of collecting/exchange: Fiji islands

Date of collecting/exchange: October 1838

Circumstances of collecting/exchange: Dumont d'Urville second survey of Fiji (13th to 28th Oct 1838)

Related documentation: MQB's online catalogue: <http://www.quaibranly.fr/cc/pod/recherche.aspx?b=1&t=1>

Bibliography:

Leclerc, S., 2008. Les collections fidjiennes françaises : l'exemple des collectes Dumont-D'urville. M.A. dissertation. Paris: Ecole du Louvre. Vol.2, p.274-5.

Leclerc, S., 2007. Les objets fidjiens du Musée du Quai Branly, dépôt du Musée des Antiquités Nationales de Saint-Germain-en-Laye. M.A. dissertation. Paris: Ecole du Louvre.

Found: Yes

Seen: Yes

Examination/Search date: 10th Feb 2010

MQB-Shovel-72.53.447



Photo © MQB

Designation: Spade

Vernacular Name: *iSivi*

Current location: Musée du Quai Branly - Paris (France)

Current inventory number: 72.53.447

Description: Shovel made of an oyster shell of translucent, brown colour and a wooden shaft with a forked end. The shell is pierced of one large hole and attached to the wooden fork by the mean of a coconut sennit cord (*magimagi*). The attachment is secured with coconut bast, which seems to protect the shell from rubbing.

Materials: Shell, wood, coconut sennit (*magimagi*)

Dimensions: 17 x 82 x 4 cm

Weight: 314 g

Place of collecting/exchange: Fiji islands

Date of collecting/exchange: Between 13th and 28th October 1838

Circumstances of collecting/exchange: Dumont d'Urville's second survey of Fiji

Related documentation: MQB's online catalogue: <http://www.quaibranly.fr/cc/pod/recherche.aspx?b=1&t=1>

Bibliography:

Leclerc, S., 2008. Les collections fidjiennes françaises : l'exemple des collectes Dumont-D'urville. M.A. dissertation. Paris: Ecole du Louvre. Vol.2, p.276-7.

Leclerc, S., 2007. Les objets fidjiens du Musée du Quai Branly, dépôt du Musée des Antiquités Nationales de Saint-Germain-en-Laye. M.A. dissertation. Paris: Ecole du Louvre.

Found: Yes

Seen: Yes

Examination/Search date: 10th Feb 2010

MQB-Spear-72.84.302



Photo © MQB

Designation: Spear

Vernacular Name: *Gadregadre*

Current location: Musée du Quai Branly - Paris (France)

Current inventory number: 72.84.302

Description: Wooden barbed spear, made of one carved piece of wood. The barbs are underlined with shell discs, threaded onto small cords of vegetable fibres. From pictures, some of lashings could be made of coconut sennit (*magimagi*).

Materials: Shell, wood, coconut sennit (*magimagi*)?, vegetable fibres

Dimensions: 342 x 7.5 cm

Provenance: Fiji islands

Circumstances of collecting/exchange: Unclear history

Related documentation: MQB's online catalogue: <http://www.quaibranly.fr/cc/pod/recherche.aspx?b=1&t=1>

Found: Yes

Seen: No

Examination/Search date: 2007-2011

NMNH_Washington-Barkcloth-E003271



Photo S. Leclerc-Caffarel © NMNH, SI

Designation: Barkcloth

Vernacular Name: *Gatu vakaviti*

Current location: National Museum of Natural History - Washington D.C. (USA)

Current inventory number: E003271

Other numbers: Peale Catalogue Number: 1449

Description: Large square piece of barkcloth. Its central part is decorated with light brown hatches, which alternate in several directions to form large intricate chevrons. Those appear in low contrast on the natural shade of the barkcloth. This type of decor is quite typical of Western Polynesian cloths (*gatu*), notably found in Tonga. Now, two extremities of this piece are covered with stencilled patterns, more typical of Fijian *masi* cloths, on about 50 cm. That combination of patterns considered rather Tongan on one hand and Fijian on the other is typical of the barkcloth production of the Eastern group of the Fijian islands (Lau). Barkcloths like this are called *gatu vakaviti*, i.e. *gatu* in the Fijian fashion/style.

Materials: Barkcloth, pigments

Provenance: Lau, Eastern Fiji

Place of collecting/exchange: Fiji islands

Date of collecting/exchange: 1840

Circumstances of collecting/exchange: US Exploring Expedition (1838-42)

Related documentation:

Online SI catalogue:

http://www.si.si.edu/digitalcollections/usexex/navigation/Anthropology/object_explore.cfm

NMNH's database, for the department of anthropology: <http://collections.nmnh.si.edu/search/anth/>

Archives: Peale Catalogue

Found: Yes

Seen: Yes

Examination/Search date: 6th July 2009

NMNH_Washington-Basket-E003239



Photo S. Leclerc-Caffarel © SI

Designation: Basket, Satchel
Vernacular Name: *Rubu*

Current location: National Museum of Natural History - Washington D.C. (USA)
Current inventory number: E003239
Other numbers: Peale Catalogue Number: 1841

Description:

Finely woven flat basket. The inner part is coarsely plaited with wider pandanus strips, natural colour, into a simple chequered board pattern. The outer part is finely woven into geometric patterns of narrow black and natural strips of pandanus (*voivoi*). These are so intricate that when you look at the *rubu* from various distances and angles, you see different levels of its décor. At the mouth, braided cords of *magimagi* complete the bag with handles.

Materials: Pandanus (*voivoi*), coconut fibre cord (*magimagi*), pigments

Provenance: Fiji islands

Place of collecting/exchange: Fiji islands

Date of collecting/exchange: 1840

Circumstances of collecting/exchange: US Exploring Expedition

Labels/inscriptions: Has original Peale tag

Related documentation: Online SI catalogue:

http://www.sil.si.edu/digitalcollections/usexex/navigation/Anthropology/object_explore.cfm

Archives: Peale catalogue (1846)

Found: Yes

Seen: Yes

Examination/Search date: 7th July 2009

NMNH_Washington-Basket-E003243



Photo S. Leclerc-Caffarel © SI

Designation: Basket, Satchel

Vernacular Name: *Rubu*

Current location: National Museum of Natural History - Washington D.C. (USA)

Current inventory number: E003243

Other numbers: Peale Catalogue Number: 1868

Description: "RUBU," OR FINELY WOVEN, FLAT, PANDANUS LEAF SACHEL. THE INTERIOR IS COARSELY WOVEN OF WIDER GAUGE PANDANUS STRIPS AND THE EXTERIOR IS FINELY WOVEN IN DECORATIVE GEOMETRIC PATTERNS IN DARK BROWN, BLACK AND NATURAL PANDANUS. THE DECORATIVE PATTERNS ARE CONTAINED WITHIN A CENTRAL BAND, WITH THE TWO OUTSIDE BANDS PLAIN. THE OPENING AT THE TOP IS TIED WITH A BRAIDED COCONUT FIBER CORD. (SI)

Materials: Pandanus (*voivoi*), coconut fibre cord (*magimagi*), pigments

Provenance: Fiji islands

Place of collecting/exchange: Fiji islands

Date of collecting/exchange: 1840

Circumstances of collecting/exchange: US Exploring Expedition, collected by Robert E. JOHNSON

Previous collections/owners: Collector: Robert E. JOHNSON

Labels/inscriptions: HAS ORIGINAL PEALE TAG; ALSO ATTACHED TAG READS, "BY R.E. JOHNSON, EX. EX. BOX! 34, NO. 4". (SI)

Related documentation: Online SI catalogue:

http://www.sil.si.edu/digitalcollections/usexex/navigation/Anthropology/object_explore.cfm

Archives: Peale Catalogue (1846)

Found: Yes

Seen: Yes

Examination/Search date: 17th June 2009

NMNH_Washington-Basket-E003251



Photo S. Leclerc-Caffarel © SI

Designation: Basket, Satchel
Vernacular Name: *Rubu*

Current location: National Museum of Natural History - Washington D.C. (USA)
Current inventory number: E003251
Other numbers: Peale Catalogue Number: 1843

Description: "RUBU," OR FINELY WOVEN, FLAT, PANDANUS LEAF SACHEL. THE INTERIOR IS COARSELY WOVEN OF WIDER GAUGE PANDANUS STRIPS AND THE EXTERIOR IS FINELY WOVEN IN DECORATIVE GEOMETRIC PATTERNS EMPLOYING DARK BROWN, AND NATURAL PANDANUS. THE OPENING AT THE TOP IS TIED WITH A BRAIDED COCONUT FIBER CORD. (SI)
Materials: Pandanus (*voivoi*), coconut fibre cord (*magimagi*), pigments

Provenance: Fiji islands
Place of collecting/exchange: Fiji islands
Date of collecting/exchange: 1840
Circumstances of collecting/exchange: US Exploring Expedition

Related documentation: Online SI catalogue:
http://www.si.si.edu/digitalcollections/usexex/navigation/Anthropology/object_explore.cfm
Archives: Peale Catalogue (1846)

Found: Yes
Seen: Yes
Examination/Search date: 13th July 2009

NMNH_Washington-Basket-E003302



Photo S. Leclerc-Caffarel © SI

Designation: Basket, Satchel
Vernacular Name: *Rubu*

Current location: National Museum of Natural History - Washington D.C. (USA)
Current inventory number: E003302
Other numbers: Peale Catalogue Number: 1846

Description: "RUBU," OR FINELY WOVEN, FLAT, PANDANUS LEAF SACHEL. THE INTERIOR IS COARSELY WOVEN OF WIDER GAUGE PANDANUS STRIPS AND THE EXTERIOR IS MORE FINELY WOVEN IN DECORATIVE CHECKER-WORK IN BLACK AND NATURAL PANDANUS WITH AN OVERLAY OF MORE DELICATE GEOMETRIC DESIGNS IN A LIGHT YELLOW. THE OPENING AT THE TOP IS TIED WITH EIGHT CORDS OF BRAIDED COCONUT FIBER. (SI)

Materials: Pandanus (*voivoi*), coconut fibre cord (*magimagi*), pigments

Provenance: Fiji islands

Place of collecting/exchange: Fiji islands

Date of collecting/exchange: 1840

Circumstances of collecting/exchange: US Exploring Expedition, Collected by Thomas A. BUDD (SI)

Previous collections/owners: Collector: Thomas A. BUDD (SI)

Labels/inscriptions: ATTACHED LABEL READS, "BY LIEUT BUDD EX BOX! 35". (SI)

Related documentation: Online SI catalogue:

http://www.sil.si.edu/digitalcollections/usexex/navigation/Anthropology/object_explore.cfm

Archives: Peale Catalogue (1846)

Found: Yes

Seen: Yes

Examination/Search date: 13th July 2009

NMNH_Washington-Bracelet-E003167



Photo S. Leclerc-Caffarel © SI

Designation: Bracelet or Armlet

Vernacular Name: *Qato*

Use(s): Ornaments like those were worn on the upper arm, just above the elbow

Current location: National Museum of Natural History - Washington D.C. (USA)

Current inventory number: E003167

Other numbers: Peale Catalogue Number: 1662

Object numbers/parts: 5

Description:

Five specimens under the same number, two of them include one blue faceted glass bead each.

FROM CARD: "BLACK WOODY TENDRIL OR FIBRE." OLD LABEL: "EACH CONSISTS OF A BUNDLE OF SMALL RATTAN-LIKE VEGETABLE FIBERS, CUT TO SAME LENGTH, AND BENT IN CIRCLET WITH ENDS OVERLAPPING, AND HELD BY AN INTERWOVEN KNOT OF SAME FIBER." (SI)

Materials: Vine like fibres

Provenance: Fiji islands

Place of collecting/exchange: Fiji islands

Date of collecting/exchange: 1840

Circumstances of collecting/exchange: US Exploring Expedition

Related documentation: Online SI catalogue:

http://www.si.edu/digitalcollections/usexex/navigation/Anthropology/object_explore.cfm

Archives: Peale catalogue (1846)

Found: Yes

Seen: Yes

Examination/Search date: 18th June 2009

Notes and comments: Similar to objects figured in a plate in Dumont d'Urville's first trip account, collected in 1827. Such artefacts are quite common in early museum collection from Fiji. The presence of glass beads is more exceptional and such faceted glass beads were mostly found in the US Exploring Expedition collection.

NMNH_Washington-Club-E002852



Photo © NMNH, SI

Designation: Club

Vernacular Name: *Bowai*

Current location: National Museum of Natural History - Washington D.C. (USA)

Current inventory number: E002852

Other numbers: Peale Catalogue Number: 1966

Description

Wooden club, made of one piece of hardwood (*nokonoko*) in the shape of baseball bat (*bowai*). The base is broken in one place. The club is not decorated except for a double band of braided coconut sennit cord (*magimagi*), onto which a few small shell beads, of white colour, have been threaded. Another band of cord is visible above the first one, but it is made of other fibres and looks like an European cord (perhaps for attachment of an old tag, now missing).

Materials: Hardwood (*nokonoko*), vegetable fibres, shell

Techniques: Wood carving

Provenance: Fiji islands

Date of collecting/exchange: 1840

Circumstances of collecting/exchange: US Exploring Expedition

Related documentation:

Online SI Ex.Ex. cultural objects database:

http://www.si.si.edu/digitalcollections/usexex/navigation/Anthropology/object_explore.cfm

NMNH's database, for the department of anthropology: <http://collections.nmnh.si.edu/search/anth/>

Archives: Peale catalogue

Found: Yes

Seen: Yes

Examination/Search date: 13th July 2009

NMNH_Washington-Club-E002855



Photo © SI

Designation: Ceremonial club

Vernacular Name: *Siriti* or *Gugu*

Use(s): Ceremonial and dancing club (Clunie 2003:110, fig.4c-f)

Current location: National Museum of Natural History - Washington D.C. (USA)

Current inventory number: E002855

Other numbers: Peale Catalogue Number: 1944

Description: LIGHTWEIGHT WOODEN CLUB WITH AN OVAL-SECTIONED HANDLE, AND A BROAD, FLAT, INTRICATELY CARVED AND INCISED HEAD, WHICH IS SAID TO BE IN THE SHAPE OF A BUTTERFLY FISH. THE HANDLE IS COVERED WITH A PLAITED SLEEVE OF DARK BROWN AND NATURAL PANDANUS IN A CHECKERED PATTERN (SI)

Materials: Light wood, vegetable fibre (pandanus)

Provenance: Fiji islands

Place of collecting/exchange: Fiji islands

Date of collecting/exchange: 1840

Circumstances of collecting/exchange: US Exploring Expedition

Related documentation: Online SI Ex.Ex. cultural objects database:

http://www.sil.si.edu/digitalcollections/usexex/navigation/Anthropology/object_explore.cfm

Archives: Peale catalogue (1846)

Bibliography:

Clunie, F., 2003. *Fijian Weapons and Warfare* Reprint., Suva: Fiji Museum.

Found: Yes

Seen: Yes

Examination/Search date: 15th June 2009

NMNH_Washington-Club-E002867



Photo S. Leclerc-Caffarel © SI

Designation: War club

Vernacular Name: *iula tavatava*

Male production

Current location: National Museum of Natural History - Washington D.C. (USA)

Current inventory number: E002867

Other numbers: Peale Catalogue Number: 1974

Description: Large throwing club made of very dense and dark wood. Seems to have been anointed. Carved at grip with typical *tavatava* or zigzag designs

Materials: Hardwood, oil

Techniques: Wood carving

Provenance: Fiji islands

Place of collecting/exchange: Fiji islands

Date of collecting/exchange: 1840

Circumstances of collecting/exchange: US Exploring Expedition

Related documentation: Online SI Ex.Ex. cultural objects database:

http://www.si.si.edu/digitalcollections/usex/navigation/Anthropology/object_explore.cfm

Archives: Peale catalogue (1846)

Found: Yes

Seen: Yes

Examination/Search date: 20th July 2009

Notes and comments: Problem with this number. Jane Walsh described a *totokia* club, now missing in the collection, under that ID.

NMNH_Washington-Club-E002884

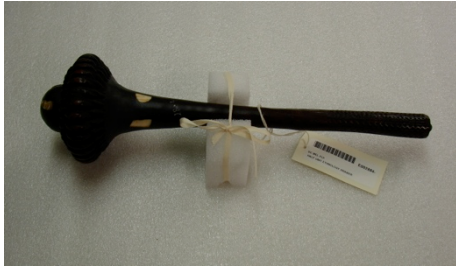


Photo S. Leclerc-Caffarel © SI

Designation: Throwing club

Vernacular Name: *iula tavatava vonotabua*

Current location: National Museum of Natural History - Washington D.C. (USA)

Current inventory number: E002884

Other numbers: Peale Catalogue Number: 2247

Description: Fluted throwing club, made of hardwood, serrated at head and carved at grip with typical *tavatava* patterns. Traces of 8 ivory inlays on the top of the shaft and on the top button on the head. The club seems to have been anointed. Oil still comes out today, giving it a sticky, glazy patina.

Materials: Hardwood, ivory, metal screw (bottom of club), oil

Provenance: Fiji islands

Place of collecting/exchange: Fiji islands

Date of collecting/exchange: 1840

Circumstances of collecting/exchange: US Exploring Expedition

Labels/inscriptions: Has original Peale tag, stuck on

Related documentation: Online SI Ex.Ex. cultural objects database:

http://www.sil.si.edu/digitalcollections/usexex/navigation/Anthropology/object_explore.cfm

Archives: Peale catalogue (1846)

Found: Yes

Seen: Yes

Examination/Search date: 26th June 2009

NMNH_Washington-Club-E002889



Photo S. Leclerc-Caffarel © SI

Designation: Throwing club
Vernacular Name: *Iula drisia*

Current location: National Museum of Natural History - Washington D.C. (USA)
Current inventory number: E002889
Other numbers: Peale Catalogue Number: 2236

Description: Throwing club made of dense hardwood of brown reddish shade. The shaft flares up towards the bottom. The grip is undecorated. There are one tooth (canine? pig?) and one piece of ivory embedded into some natural cracks of the wood, on the head of the club. The tooth seems to have been carved to augment its serrated aspect. It has been described as two human teeth in the NMNH catalogue but it seems there is only one coherent tooth. The piece of ivory, roughly cut, can be found at the base of the head.

Materials: Wood, ivory (whale ivory?), tooth

Provenance: Fiji islands
Place of collecting/exchange: Fiji islands
Date of collecting/exchange: 1840
Circumstances of collecting/exchange: US Exploring Expedition
Labels/inscriptions: Has original Peale tag, stuck on

Related documentation: Online SI Ex.Ex. cultural objects database:
http://www.sil.si.edu/digitalcollections/usexex/navigation/Anthropology/object_explore.cfm

Archives: Peale catalogue (1846)

Found: Yes

Seen: Yes

Examination/Search date: 23rd June 2009

NMNH_Washington-Club-E003008



Photo S. Leclerc-Caffarel © SI

Designation: Throwing club
Vernacular Name: *iula drisia*

Current location: National Museum of Natural History - Washington D.C. (USA)
Current inventory number: E003008
Other numbers: Peale Catalogue Number: 2238

Description: Throwing club made of dense hardwood. The head is entirely carved with *tavatava* designs and so is the grip.

Materials: Hardwood

Techniques: Wood carving

Provenance: Fiji islands

Place of collecting/exchange: Fiji islands

Date of collecting/exchange: 1840

Circumstances of collecting/exchange: US Exploring Expedition

Labels/inscriptions: HAS ORIGINAL PEALE TAG, ALSO WRITTEN ON CLUB, "EX EX" AND "BOX 24" ›PRESUMABLY THE BOX IN WHICH THE CLUB WAS ORIGINALLY SHIPPED (SI)

Related documentation: Online SI Ex.Ex. cultural objects database:

http://www.sil.si.edu/digitalcollections/usexex/navigation/Anthropology/object_explore.cfm

Archives: Peale catalogue (1846)

Found: Yes

Seen: Yes

Examination/Search date: 26th June 2009

NMNH_Washington-Club-E003097



Photo S. Leclerc-Caffarel © SI

Designation: Throwing club (replica?)

Current location: National Museum of Natural History - Washington D.C. (USA)

Current inventory number: E003097

Other numbers: Peale Catalogue Number: 2251

Description: Club made in the shape of a *iula tavatava* but in a quite light wood. Although its features seems to imitate a Fijian throwing club (*iula tavatava*), the club is not properly balanced, which means it could hardly be thrown. The overall shape is also quite awkward. Carving mimics traditional carved décors on head and at grip.

Materials: Wood

Techniques: Wood carving

Provenance: Fiji islands

Place of collecting/exchange: Fiji islands

Date of collecting/exchange: 1840

Circumstances of collecting/exchange: US Exploring Expedition

Labels/inscriptions: Stuck on label, at top of the shaft reads: "WAR...FIJI IDS. BOX 25 ORTH DEPT"

Has original Peale number stuck on the top of head.

Related documentation: Online SI Ex.Ex. cultural objects database:

http://www.si.edu/digitalcollections/usexex/navigation/Anthropology/object_explore.cfm

Archives: Peale catalogue (1846)

Found: Yes

Seen: Yes

Examination/Search date: 23rd June 2009

Notes and comments: Appears to be an early "fake" or replica

NMNH_Washington-Club-E003129



Photo S. Leclerc-Caffarel © SI

Designation: Throwing club

Vernacular Name: *Iula tavatava*

Use(s): Notches on the shaft are most likely a count of ritual nights

Current location: National Museum of Natural History - Washington D.C. (USA)

Current inventory number: E003129

Other numbers: Peale Catalogue Number: 2497

Description: Fluted throwing club made of dark hardwood. A number of notches along the shaft. Grip carved with *tavatava* designs. Seems to have been well handled.

Materials: Wood

Provenance: Fiji islands

Place of collecting/exchange: Fiji islands

Date of collecting/exchange: 1840

Circumstances of collecting/exchange: US Exploring Expedition

Labels/inscriptions: Has an original Peale tag, stuck on.

Related documentation: Online SI Ex.Ex. cultural objects database:

http://www.sil.si.edu/digitalcollections/usexex/navigation/Anthropology/object_explore.cfm

Archives: Peale catalogue (1846)

Found: Yes

Seen: Yes

Examination/Search date: 26th June 2009

NMNH_Washington-Club-E003136



Photo S. Leclerc-Caffarel © SI

Designation: Throwing club (fake? Or replica?)

Current location: National Museum of Natural History - Washington D.C. (USA)

Current inventory number: E003136

Other numbers: Peale Catalogue Number: 2232

Description: This artefact seems to imitate the feature of a *iula tavatava* but rather looks like an European piece of furniture. The way it is carved and its size do not match the characteristics of genuine Fijian artefacts. The head is carved in imitation to proper throwing clubs, but in lower relief. The shaft narrows down toward the butt, which is very unusual for Fijian throwing clubs, and is undecorated. A drilled hole at the bottom may be reminiscent from an old display. The proportions of this item does not allow it to be considered as a genuine *iula tavatava*

Materials: Wood

Techniques: Wood carving

Date of collecting/exchange: 1840

Circumstances of collecting/exchange: US Exploring Expedition

Labels/inscriptions: WRITTEN ON CLUB, "BOX 24" >PRESUMABLY THE BOX IN WHICH THE CLUB WAS ORIGINALLY SHIPPED!. (SI)

Related documentation: Online SI Ex.Ex. cultural objects database:

http://www.si.edu/digitalcollections/usexex/navigation/Anthropology/object_explore.cfm

Archives: Peale catalogue (1846)

Found: Yes

Seen: Yes

Examination/Search date: 26th June 2009

Notes and comments: Appears to be an early "fake" or replica, perhaps the work of an European. There is another, very similar, item in the same collection (E3075)

NMNH_Washington-Comb-E003191



Photo S. Leclerc-Caffarel © SI

Designation: Comb

Vernacular Name: *iseru balabala*

Current location: National Museum of Natural History - Washington D.C. (USA)

Current inventory number: E003191

Other numbers: Peale Catalogue Number: 1786

Description: Elongated comb made of 12 sticks of black treefern wood (*balabala*), pointed at one end. One is now broken. The sticks are bound together by the mean of single-stranded sennit (*magimagi*). Its natural copper colour contrasts with the dark wooden parts. The lashing is made very neatly, into geometric designs, symmetrically arranged. At the top, there is a bow in pandanus (*voivoi*)

Materials: Treefern wood (*balabala*), coconut coir fibres (sennit, *magimagi*), pandanus (*voivoi*)

Provenance: Fiji islands

Place of collecting/exchange: Fiji islands

Date of collecting/exchange: 1840

Circumstances of collecting/exchange: US Exploring Expedition

Labels/inscriptions: Has original Peale tag stuck on

Related documentation: Online SI Ex.Ex. cultural objects database:

http://www.si.edu/digitalcollections/usexex/navigation/Anthropology/object_explore.cfm

Archives: Peale catalogue (1846)

Found: Yes

Seen: Yes

Examination/Search date: 23rd June 2009

NMNH_Washington-Cup-E002989



Photo S. Leclerc-Caffarel © SI

Designation: Cup

Vernacular Name: *Bilo*

Use(s): Cup for *yaqona* consumption

Current location: National Museum of Natural History - Washington D.C. (USA)

Current inventory number: E002989

Other numbers: Peale Catalogue Number: 1575

Description: Cup made of half a coconut, carefully polished. A handle of knotted coconut sennit (magimagi) is attached to it.

Materials: Coconut shell, sennit (magimagi)

Dimensions (Metric): 8.2 cm diameter, 3 cm high (bowl), 8 cm wide (handle)

Provenance: Fiji islands

Place of collecting/exchange: Fiji islands

Date of collecting/exchange: 1840

Circumstances of collecting/exchange: US Exploring Expedition

Related documentation: Online SI catalogue:

http://www.si.edu/digitalcollections/usex/navigation/Anthropology/object_explore.cfm

Archives: Peale catalogue (1846)

Found: Yes

Seen: Yes

Examination/Search date: 19th June 2009

NMNH_Washington-Dish-E003356



Photo © SI

Designation: Dish

Vernacular Name: *Bavelo*

Use(s): Most likely a *yaqona* bowl

Current location: National Museum of Natural History - Washington D.C. (USA)

Current inventory number: E003356

Other numbers: Peale Catalogue Number: 1066

Description: Bowl made of one piece of fibrous wood, probably *vesi* wood. Pointed lug at front for passage of the *watabu* or sacred cord that designate the most important individual in the *kava* circle. This specimen has pointed ends. Four short feet.

Materials: Wood (*vesi*)

Techniques: Wood carving

Dimensions: 43 cm long x 23.5 cm wide; 8.5 cm high

Provenance: Fiji islands

Place of collecting/exchange: Fiji islands, Vanualevu, Bua Bay

Date of collecting/exchange: 1840, June 8th

Circumstances of collecting/exchange: US Exploring Expedition, collected by Titian R. PEALE

Previous collections/owners: Collector: Titian R. PEALE, the ornithologist of the Expedition and also the one in charge of the catalogue for the ethnographic collections

Labels/inscriptions: HAS ORIGINAL PEALE TAG; ALSO WRITING READ UNDER ULTRA VIOLET LIGHT SAYS, "FEEJEE DISH, 1066, T.R. PEALE SANDALWOOD BAY ISL OF VENUA LEVU JUNE 8TH, 1840". (SI)

Related documentation: Online SI Ex.Ex. cultural objects database:

http://www.si.si.edu/digitalcollections/usexex/navigation/Anthropology/object_explore.cfm

Archives: Peale catalogue (1846):

"Wooden dishes used by the Samoans for anointing themselves with cocoanut-oil"

Found: Yes

Seen: Yes

Examination/Search date: 14th July 2009

Notes and comments: Although this item has an original Peale tag stuck on, there is a discrepancy between the Peale catalogue and the actual artefact, as well as with the supposed place of acquisition (Samoa on one hand and Bua Bay, Vanualevu on the other, as written on the bowl itself).

NMNH_Washington-Dish-E003584



Photo S. Leclerc-Caffarel © SI

Designation: Dish

Vernacular Name: *Sedrenibete*

Use(s): Probably an oil dish or a priest's dish for ritual consumption of *yaqona* (Clunie 2003: fig. 137)

Current location: National Museum of Natural History - Washington D.C. (USA)

Current inventory number: E003584

Other numbers: Peale Catalogue Number: 937

Description: Wooden dish, carved in the shape of a double canoe (*drua*). Most likely *vesi* wood, which was regarded sacred in early times in Fiji

Materials: Wood (*vesi*)

Dimensions: 53 cm at the longest, 26.5 cm wide, 5.5 cm high

Place of collecting/exchange: Tonga islands

Date of collecting/exchange: 1840

Circumstances of collecting/exchange: US Exploring Expedition

Related documentation: Online SI Ex.Ex. cultural objects database:

http://www.sil.si.edu/digitalcollections/usexex/navigation/Anthropology/object_explore.cfm

Archives: Peale catalogue (1846):

"937 — *Wooden dish* made in the form of a double Canoe, and used by Tongan Islanders in anointing their bodies with cocoa-nut oil — which being poured on the dish made to the Size of the open hand, is found to be a convenient toiled article"

Bibliography:

Clunie, F., 2003. *Yalo i Viti: A Fiji Museum Catalogue*, Suva, Fiji: Fiji Museum. Reprint.

Found: Yes

Seen: Yes

Examination/Search date: 15th June 2009

Notes and comments: A number of *vesi* made wooden dishes were made in Eastern Fiji, where *vesi* trees grow, and exported to Tonga as well as to other parts of Fiji

NMNH_Washington-Earplug-E003050



Photos S. Leclerc-Caffarel © SI



Designation: Earlobe plug/ear ornament

Vernacular Name: *Saunidaliga*

Current location: National Museum of Natural History - Washington D.C. (USA)

Current inventory number: E003050

Other numbers: Peale Catalogue Number: 1661

Description: Ear ornament made of a circular piece of light wood, ornamented with faceted glass beads of various colours (blue, green and transparent). These are attached to the ring of wood by mean of a string of vegetable fibres, onto which they are threaded. Some of those beads are now missing. The front of the wooden ring, where the beads are, is decorated with incised lines.

Materials: Light wood, glass beads, vegetable fibres

Techniques: Wood carving

Dimensions: 3.2 cm in diameter by 1.9cm in depth (Clunie & Ligairi 1983)

Provenance: Fiji islands

Circumstances of collecting/exchange: US Exploring Expedition

Labels/inscriptions: "Fiji" + current SI's catalogue number written in black on the inner part of the object.

Related documentation: Online SI Ex.Ex. cultural objects database:

http://www.sil.si.edu/digitalcollections/usexex/navigation/Anthropology/object_explore.cfm

Archives: Peale catalogue (1846)

Bibliography:

Clunie, F. & Ligairi, W., 1983. Fijian Earlobe Slitting and Distortion. *Domodomo*, 1(1), p.22-44. About this specific object p.29.

Found: Yes

Seen: Yes

Examination/Search date: 19th June 2009

Notes and comments:

Early example of use of faceted glass beads. These are quite frequent in the Wilkes collection from Fiji.

NMNH_Washington-Figure-E002996



Photo S. Leclerc-Caffarel © SI

Designation: Male wooden figure

Vernacular Name: *Matakau*

Current location: National Museum of Natural History - Washington D.C. (USA)

Current inventory number: E002996

Other numbers: Peale Catalogue Number: 1817

Description: Carved wooden figure, male, with one hand at chest and the other at waist. The figure's legs seem to have been cut off, perhaps to separate it from the support on which it used to stand (see E2999). Their end is now rounded. Triangular face. Broken ear ornament on right ear.

Materials: Wood

Techniques: Wood carving

Provenance: Fiji islands

Date of collecting/exchange: 1840

Circumstances of collecting/exchange: US Exploring Expedition, collected by Samuel B. ELLIOTT (SI)

Previous collections/owners: Collector: Samuel B. ELLIOTT (SI)

Related documentation: Online SI Ex.Ex. cultural objects database:

http://www.sil.si.edu/digitalcollections/usexex/navigation/Anthropology/object_explore.cfm

Archives: Peale catalogue (1846)

Bibliography:

Larsson, K.E., 1960. *Fijian studies*, Göteborg: Ethnografiska Museet.

Found: Yes

Seen: Yes

Examination/Search date: 30th June 2009

Notes and comments: This item seems to form a pair with one female figure in the same collection (E2999). Although they are made of a different wood, they show similar features.

NMNH_Washington-Figure-E002998



Photo NMNH © SI

Designation: Female wooden figure

Vernacular Name: *Matakau*

Current location: National Museum of Natural History - Washington D.C. (USA)

Current inventory number: E002998

Other numbers: Peale Catalogue Number: 1816

Description:

Female wooden figure, standing. It seems it used to wear a turban (*isala*) of fine white barkcloth from which only pieces remain, stuck on the head of the figure.

Dark heavy wood. Quite naturalistic in its features.

Materials: Wood, barkcloth

Techniques: Wood carving

Dimensions: Approx. 45 cm high

Place of collecting/exchange: Vanua Levu, Fiji islands

Date of collecting/exchange: 1840

Circumstances of collecting/exchange: Acquired on Vanualevu by T.R. Peale, from the US Exploring Expedition:

“On the way from Vaturua to Matainole, a piece of consecrated ground was passed, on which were mounds of stone, with a rude idol, dressed with a turban and the Feejee hair-pins. The idol was surrounded by clubs set up edgewise, and many spears, arrows, trinkets, cocoa-nuts, &c, lay around, which had evidently been placed there as offerings. A large party of natives, who were with our gentlemen, on seeing them approach it, deserted, excepting a man and boy, who, contrary to the others, seemed anxious for them to partake of the offerings which lay about, and offered to sell the idol, which was bought for a paper of vermilion. Neither of them, however, could be tempted to touch a single article himself, although they had no objection to our gentlemen doing so. On the next day, Mr. Peale returning from his jaunt took his purchase and carried it on board.” (Wilkes 1845, III:227-228)

Previous collections/owners: T.R. Peale

Labels/inscriptions: OLD PHOTOGRAPH SHOWS ORIGINAL PEALE TAG ON FOREHEAD OF FIGURE.(SI)

Related documentation: Online SI Ex.Ex. cultural objects database:

http://www.si.si.edu/digitalcollections/usexex/navigation/Anthropology/object_explore.cfm

Archives: Peale catalogue (1846)

Bibliography:

Larsson, K.E., 1960. *Fijian studies*, Göteborg: Ethnografiska Museet.

Wilkes, C., 1845. *Narrative of the United States exploring expedition during the years 1838, 1839, 1840, 1841, 1842*, Philadelphia: Lea & Blanchard.

Found: Yes

Seen: Yes

Examination/Search date: 29th June 2009

NMNH_Washington-Figure-E002999



Photo S. Lecler-Caffarel © SI

Designation: Female wooden figure

Vernacular Name: *Matakau*

Current location: National Museum of Natural History - Washington D.C. (USA)

Current inventory number: E002999

Other numbers: Peale Catalogue Number: 1818

Description: Carved wooden figure, female, with hands at waist and chest. Made of one piece of dark wood. Dark coating, perhaps from being anointed. It is standing on a kind of serrated platform, with a small lug underneath as if it was supposed to be plugged into something else.

Materials: Wood

Techniques: Wood carving

Provenance: Fiji islands

Date of collecting/exchange: 1840

Circumstances of collecting/exchange: US Exploring Expedition

Labels/inscriptions: OLD PHOTOGRAPH SHOWS ORIGINAL PEALE TAGON FOREHEAD.(SI)

Related documentation: Online SI Ex.Ex. cultural objects database:

http://www.si.edu/digitalcollections/usexex/navigation/Anthropology/object_explore.cfm

Archives: Peale catalogue (1846)

Found: Yes

Seen: Yes

Examination/Search date: 30th June 2009

Notes and comments:

This item seems to form a pair with one male figure in the same collection (E2996). Although they are made of a different wood, they show similar features.

NMNH_Washington-Figure-E003275



Photo S. Leclerc-Caffarel © SI

Designation: Male wooden figure

Current location: National Museum of Natural History - Washington D.C. (USA)

Current inventory number: E003275

Other numbers: Peale Catalogue Number: 1819

Description: STANDING MALE FIGURE CARVED IN RELIEF FROM A PLANK OF WOOD. THE HEAD AND FACE ARE REALISTICALLY RENDERED, WITH INDICATIONS OF A TURBAN COVERING THE HAIR. THERE ARE ALSO INCISED GEOMETRIC DECORATIONS ON THE BACK OF THE PLANK. THE BOARD HAS THREE HOLES ALONG ONE SIDE, PRESUMABLY ATTACHMENT. (SI)

Materials: *Vesi* wood

Techniques: Wood carving

Dimensions: 105 cm high

Provenance: Rewa, Vitilevu, Fiji islands

Place of collecting/exchange: Rewa, Vitilevu, Fiji islands

Date of collecting/exchange: 1840

Circumstances of collecting/exchange: US Exploring Expedition.

Related documentation: Online SI Ex.Ex. cultural objects database:

http://www.si.si.edu/digitalcollections/usexex/navigation/Anthropology/object_explore.cfm

Archives: Peale catalogue (1846)

Bibliography:

Larsson, K.E., 1960. *Fijian studies*, Göteborg: Ethnografiska Museet.

Found: Yes

Seen: Yes

Examination/Search date: 30th June 2009

NMNH_Washington-Flute-E002902



Photo © SI

Designation: Nose flute

Vernacular Name: *Bituucu*

Use(s): "Nose-flutes were played by both sexes, providing soothing background music when resting, or while courting. The stop arrangement varied locally (...) The player blew obliquely from one nostril into the uppermost row of five stop holes, blocking the other nostril with thumb or forefinger, and opening and closing the second stop with a finger. The other hand held the bottom of the flute, its fingers blocking and clearing the lower two stop holes to vary notes. The central ring of stops was left open. Tunes played were soft and plaintive, running only two or three, or at most, four notes." (Clunie 2003: 56)

Current location: National Museum of Natural History - Washington D.C. (USA)

Current inventory number: E002902

Other numbers: Peale Catalogue Number: 1721

Description: Bamboo flute made of one bamboo internode, with a row of five holes on one side. The central hole is part of a perpendicular four-hole ring. Surface decorated with carved and burnt designs including geometrical forms, and representations of ships and guns. This decoration is organised in several sections, all along the flute. The bird-like designs around the holes remind the frigate bird.

Materials: Bamboo (*bitu*)

Techniques: Wood carving, pyrography

Provenance: Fiji islands

Place of collecting/exchange: Fiji islands

Date of collecting/exchange: 1838

Circumstances of collecting/exchange: US Exploring Expedition

Labels/inscriptions:

- Remains of an old paper label glued on the flute: "Bows and arrows..."
- Has an original Peale number label.

Related documentation: Online SI Ex.Ex. cultural objects database:

http://www.si.edu/digitalcollections/usexex/navigation/Anthropology/object_explore.cfm

Archives: Peale catalogue (1846): 1714 to 1725: "Flutes made of bambu, played by blowing with the nostrils by the Fijians."

Bibliography:

Clunie, F., 2003. *Yalo I Viti, Shades of Viti: a Fiji Museum Catalogue*, Suva, Fiji: Fiji Museum. Reprint.

Found: Yes

Seen: Yes

Examination/Search date: 19th June 2009

Notes and comments: The ships represented on the flute could be Wilkes' vessels, but no evidence has been found so far that could confirm or contradict this hypothesis.

NMNH_Washington-Headband-E003031

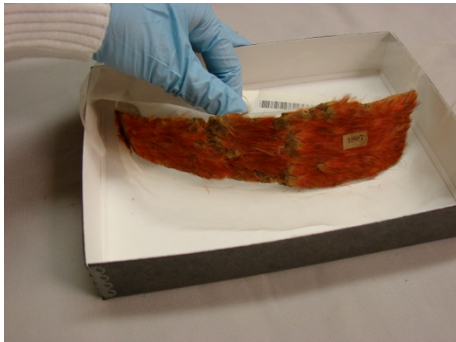


Photo S. Leclerc-Caffarel © SI

Designation: Head ornament

Use(s): OLD EXHIBIT LABEL READS: "WORN ONLY BY CHIEFS - MUTHUATTA." (SI)

Current location: National Museum of Natural History - Washington D.C. (USA)

Current inventory number: E003031

Other numbers: Peale Catalogue Number: 1807

Description: Headband made of a piece of pandanus leaf (*voivoi*), onto which red feathers (*kula*) have been glued by some mean (dark thick coating). One end of the headband has broken off and is now missing.

Materials: Pandanus (*voivoi*), feathers (*kula*), glue

Provenance: Fiji islands

Place of collecting/exchange: Macuata, eastern Vanualevu, Fiji Islands

Date of collecting/exchange: 1840

Circumstances of collecting/exchange: US Exploring Expedition

Labels/inscriptions:

Has original Peale tag stuck on.

OLD EXHIBIT LABEL READS, "NARROW HEAD-BANDS OF PANDANUS LEAVES, FITTED WITH CORDS OR TIES OF SAME, & ORNAMENTED ON EXTERIOR WITH RED FEATHERS - WORN ONLY BY CHIEFS - MUTHUATTA." (SI)

Archives: Peale catalogue (1846)

Bibliography:

Henderson, G.C. (ed.), 1931. *The Journal of Thomas Williams*, Sydney: Angus & Robertson.

Found: Yes

Seen: Yes

Examination/Search date: 13th July 2009

Notes and comments:

In May 1843, Thomas Williams, a Wesleyan missionary, described such headbands used as head ornaments during a *solevu*, along with other valuables. That event was held at Lakeba in presence of Bau visitors, including Cakobau:

"The ornaments of the dancers as well as of the musicians were chiefly native, and, excepting two orange cowries and the frontlets composed of the scarlet feathers of a kind of cockatoo found about Rewa, they were worthless. The property from Bou comprised two handsome spears, more than 30 clubs wrapped with fine cynnet, 20 whales' teeth, an immense root of yangona and several hundred fathoms of *lichi* or *masi* from Kandavu. The dance, as usual, had quite a warlike character." (Henderson 1931:164)

NMNH_Washington-Headband-E003034



Photo S. Leclerc-Caffarel © SI

Designation: Head ornament

Use(s): OLD EXHIBIT LABEL READS, "WORN ONLY BY CHIEFS - MUTHUATTA." (SI)

Current location: National Museum of Natural History - Washington D.C. (USA)

Current inventory number: E003034

Other numbers: Peale Catalogue Number: 1806

Description: Headband made of a piece of pandanus leaf (*voivoi*), onto which red feathers (*kula*) have been glued by some mean (resin?). Broken at both ends. Has been conserved. One piece still attached, one now missing. Some feathers now missing.

Materials: Pandanus (*voivoi*), feathers (*kula*), glue (resin?)

Provenance: Fiji islands

Place of collecting/exchange: Macuata, eastern Vanualevu, Fiji Islands

Date of collecting/exchange: 1840

Circumstances of collecting/exchange: US Exploring Expedition

Labels/inscriptions:

Has original Peale tag stuck on.

OLD EXHIBIT LABEL READS, "NARROW HEAD-BANDS OF PANDANUS LEAVES, FITTED WITH CORDS OR TIES OF SAME, & ORNAMENTED ON EXTERIOR WITH RED FEATHERS - WORN ONLY BY CHIEFS - MUTHUATTA." (JW)

Related documentation: Online SI Ex.Ex. cultural objects database:

http://www.sil.si.edu/digitalcollections/usesex/navigation/Anthropology/object_explore.cfm

Archives: Peale catalogue (1846)

Bibliography:

Henderson, G.C. (ed.), 1931. *The Journal of Thomas Williams*, Sydney: Angus & Robertson.

Found: Yes **Seen:** Yes **Examination/Search date:** 13th July 2009

Notes and comments:

In May 1843, Thomas Williams, a Wesleyan missionary, described such headbands used as head ornaments during a *solevu*, along with other valuables. That event was held at Lakeba in presence of Bau visitors, including Cakobau:

"The ornaments of the dancers as well as of the musicians were chiefly native, and, excepting two orange cowries and the frontlets composed of the scarlet feathers of a kind of cockatoo found about Rewa, they were worthless. The property from Bou comprised two handsome spears, more than 30 clubs wrapped with fine cynnet, 20 whales' teeth, an immense root of yangona and several hundred fathoms of *lichi* or *masi* from Kandavu. The dance, as usual, had quite a warlike character." (Henderson 1931:164)

NMNH_Washington-Headdress-E23985



Photo S. Leclerc-Caffarel © SI

Designation: Head ornament

Use(s): From NMNH's catalogue card: dancing ornament

Current location: National Museum of Natural History - Washington D.C. (USA)

Current inventory number: E23985

Description: From old label: "SMALL STICKS WRAPPED WITH COTTON, ORNAMENTED ON ONE END WITH CHICKEN FEATHERS, ARRANGED IN SHAPE OF FAN AND HELD TOGETHER BY STIFFENING-BAND, THE LOWER ENDS BEING LOOPED TO GO OVER STICKS OR SPITS BOUND TOGETHER TO FORM A COMB. THE COMB GOES IN HAIR AND HOLDS HEAD-DRESS ON IN VERTICAL POSITION..."

Materials: Wood, cotton or barkcloth, feathers

Dimensions: "fan" 71 cm, "comb" 23 cm (SI)

Provenance: Fiji islands

Circumstances of collecting/exchange: Collected by US Consul I. Brower

Previous collections/owners: Isaac M. Brower

Found: Yes

Seen: No

Examination/Search date: 14th July 2009

Notes and comments: Seems to bear resemblances with other feathered headdresses from the region, including one specimen collected during the US Exploring Expedition (1840) at Somosomo, Fiji (ET136).

NMNH_Washington-Headdress-ET00316



Photo S. Leclerc-Caffarel © NMNH, SI

Designation: Headdress

Current location: National Museum of Natural History - Washington D.C. (USA)

Current inventory number: ET00316

Other numbers: Peale Catalogue Number: 2483

Description: Headdress. Rigid structure made of small sticks, wrapped in barkcloth of natural and darken shade and topped with feathers, most of them now missing.

Materials: Wooden sticks, barkcloth, feathers, pigments

Place of collecting/exchange: Somosomo, Fiji islands

Date of collecting/exchange: 1840

Circumstances of collecting/exchange: Given to Charles Wilkes, commander of the US Exploring Expedition, by Tui Cakau Yavala at Somosomo, in 1840 (Wilkes 1845, 3:160).

Related documentation:

Online SI Ex.Ex. cultural objects database:

http://www.sil.si.edu/digitalcollections/usexex/navigation/Anthropology/object_explore.cfm

NMNH's database, for the department of anthropology: <http://collections.nmnh.si.edu/search/anth/>

Archives: Peale catalogue

Bibliography:

Kaeppler, A., 1989. Museums of the World: Stages for the Study of Ethnohistory. In Susan M. Pearce. *Museums Studies in Material Culture*. London: Leicester University Press, p. 90-92.

Viola, H.J. & Margolis, C. (eds.), 1985. *Magnificent Voyagers: The U.S. Exploring Expedition, 1838-1842*, Washington, D.C.: Smithsonian Institution Press.

Wilkes, C., 1845. *Narrative of the United States exploring expedition during the years 1838, 1839, 1840, 1841, 1842*, Philadelphia, Lea & Blanchard.

Found: Yes

Seen: Yes

Examination/Search date: 16th June 2009

Notes and comments: FROM CARD: "THIS ITEM WAS FOUND IN THE COLLECTIONS WITH THE CORNER OF A WILKES EXPL. EXP. TAG BUT NO PART WITH ANY DATA ON IT". FOR ADDITIONAL DATA FROM CARD, SEE ORIGINAL CARD. IDENTIFIED BY DR. JANE WALSH, DEPARTMENT OF ANTHROPOLOGY AS PEALE # 2483 (THUS MAKING THIS A WILKES/U.S. EXPLORING EXPEDITION PIECE), "A UNIQUE FRAGILE HEADDRESS...PRESENTED TO THE EXPEDITION BY THE KING OF SOMO SOMO. ITS CATALOG NUMBER HAD BEEN LOST, AND AFTER 140 YEARS IT WAS IN EXTREMELY BAD CONDITION AND UNRECOGNIZABLE AS A HEADDRESS. IT WAS IDENTIFIED AND ENTIRELY RECONSTRUCTED BY COMPARISON WITH THE WOODCUT AND THE DESCRIPTION FROM THE 'NARRATIVE OF THE UNITED STATES EXPLORING EXPEDITION' BY CHARLES WILKES". DR. ADRIENNE KAEPLER, "ANTHROPOLOGY AND THE U.S. EXPLORING EXPEDITION" IN MAGNIFICENT VOYAGERS, THE U.S. EXPLORING EXPEDITION, 1838-1842, HERMAN J. VIOLA AND CAROLYN MARGOLIS, EDITORS, SMITHSONIAN INSTITUTION PRESS, WASHINGTON, D.C., 1985.

NMNH_Washington-Hook-E003000



Photo of old display © NMNH, SI

Designation: Hook

Use(s): Food hanger

Current location: National Museum of Natural History - Washington D.C. (USA)

Current inventory number: E003000

Other numbers: Peale Catalogue Number: 1573

Description: Wooden hanger in the shape of a human figure, above which a wooden disk can be added to protect the food from rats etc. Both elements, the figure and the disk are made of the same wood, blackened. The figure and hooks are made of one piece of wood. It looks as though the figure would be standing on a platform surrounded by 5 small cylindrical projections, onto which baskets could be suspended.

Materials: Wood

Techniques: Wood carving

Provenance: Fiji islands

Date of collecting/exchange: 1840

Circumstances of collecting/exchange: US Exploring Expedition

Related documentation:

Online SI Ex.Ex. cultural objects database:

http://www.si.edu/digitalcollections/usexex/navigation/Anthropology/object_explore.cfm

NMNH's database, for the department of anthropology: <http://collections.nmnh.si.edu/search/anth/>

Archives: Peale catalogue (1846)

Bibliography: Larsson, K.E., 1960. *Fijian studies*, Göteborg: Ethnografiska Museet.

Found: Yes

Seen: Yes

Examination/Search date: 20th July 2009

NMNH_Washington-Mask-E002910



Photo S. Leclerc-Caffarel © NMNH, SI

Designation: Mask

Vernacular Name: *Matavulo*

Use(s): This item, or a similar one, was seen dancing during a club dance (*meke vau*) at Levuka, Ovalau Island, in May 1840. The members of the US Exploring Expedition who attended the dance described the masked dancers as "Fijian clowns". Yet, Clunie and Ligairi demonstrated that such masks were more likely to be "spirit masks" in comparison with posterior practices (Clunie and Ligairi 1983: 70).

Current location: National Museum of Natural History - Washington D.C. (USA)

Current inventory number: E002910

Other numbers: Peale Catalogue Number: 1813

Description: Helmet mask made of an inner basketry work of a rattan like creeper (*walaki* vine). Onto that inner structure, a realistic face (*mata*) made of coconut bast (*vulo*) has been attached, as well as tufts of human hair for the beard, moustache and hair. That technique is quite similar to that of a number of Fijian wigs (*ulumate*). Several shades of hair can be observed.

Materials: Coconut bast, human hair, rattan like creeper (*walaki* vine)

Place of collecting/exchange: Ovalau, Fiji islands

Date of collecting/exchange: 24th or 25th of May 1840

Circumstances of collecting/exchange: The acquisition of this item, and that of a quite similar one (E2914), followed the above-mentioned *meke vau* or club dance, ordered by Tui Levuka in May 1840. In his narrative, Wilkes explained that, at the end of the dance, all clubs were piled up in front of him and his men, as a demonstrative offering from Tui Levuka (Wilkes 1845:197-200). The masks were likely acquired at the same time, or shortly after.

Related documentation: Online SI Ex.Ex. cultural objects database:

http://www.si.edu/digitalcollections/usexex/navigation/Anthropology/object_explore.cfm

NMNH's database, for the department of anthropology: <http://collections.nmnh.si.edu/search/anth/>

Archives: Peale catalogue

Bibliography:

Clunie, F. & Ligairi, W., 1983. Traditional Fijian Spirit Masks and Spirit Masquers. *Domodomo*, 1(1), p.46-71.
Wilkes, C., 1845. *Narrative of the United States exploring expedition during the years 1838, 1839, 1840, 1841, 1842*, Philadelphia, Lea & Blanchard.

Found: Yes **Seen:** Yes **Examination/Search date:** 30th June 2009

Notes and comments: Rare item

NMNH_Washington-Mask-E002914



Photo S. Leclerc-Caffarel © NMNH, SI

Designation: Mask

Vernacular Name: *Matavulo*

Use(s): This item, or a similar one, was seen dancing during a club dance (*meke vau*) at Levuka, Ovalau Island, in May 1840. The members of the US Exploring Expedition who attended the dance described the masked dancers as "Fijian clowns". Yet, Clunie and Ligairi demonstrated that such mask were more likely to be "spirit masks" in comparison with posterior practices (Clunie and Ligairi 1983: 70).

Current location: National Museum of Natural History - Washington D.C. (USA)

Current inventory number: E002914

Other numbers: Peale Catalogue Number: 1814

Description: Helmet mask made of an inner basketry work of a rattan like creeper (*walaki* vine). Onto that inner structure, a realistic face (*mata*) made of coconut bast (*vulo*) has been attached, as well as tufts of human hair for the beard, moustache and hair. That technique is quite similar to that of a number of Fijian wigs (*ulumate*). Several shades of hair can be observed. The face shows traces of a black pigment and bright yellow turmeric.

Materials: Coconut bast, human hair, rattan like creeper (*walaki* vine), pigments

Place of collecting/exchange: Ovalau, Fiji islands

Date of collecting/exchange: 24th or 25th of May 1840

Circumstances of collecting/exchange: Circumstances of collecting/exchange: The acquisition of this item, and that of a quite similar one (E2910), followed the above-mentioned *meke vau* or club dance, ordered by Tui Levuka in May 1840. In his narrative, Wilkes explained that, at the end of the dance, all clubs were piled up in front of him and his men, as a demonstrative offering from Tui Levuka (Wilkes 1845:197-200). The masks were likely acquired at the same time, or shortly after.

Related documentation:

Online SI Ex.Ex. cultural objects database:

http://www.sil.si.edu/digitalcollections/usexex/navigation/Anthropology/object_explore.cfm

NMNH's database, for the department of anthropology: <http://collections.nmnh.si.edu/search/anth/>

Archives: Peale catalogue

Bibliography:

Clunie, F. & Ligairi, W., 1983. Traditional Fijian Spirit Masks and Spirit Masquers. *Domodomo*, 1(1), p.46-71.
Wilkes, C., 1845. *Narrative of the United States exploring expedition during the years 1838, 1839, 1840, 1841, 1842*, Philadelphia, Lea & Blanchard.

Found: Yes **Seen:** Yes **Examination/Search date:** 30th June 2009

Notes and comments: Rare item

NMNH_Washington-Necklace-E002994



Photo S. Leclerc-Caffarel © SI

Designation: Neck ornament

Vernacular Name: *Bulikula*

Use(s): Chest ornament worn by individuals of chiefly rank

Current location: National Museum of Natural History - Washington D.C. (USA)

Current inventory number: E002994

Other numbers: Peale Catalogue Number: 1581

Description:

Necklace made of a golden cowry shell (*bulikula*), strung to a braided cord, with several strands of vegetable fibres. The different strands are bound together by mean of small rings of pandanus leaves (*voivoi*). According to old card, shell would be *Cyprian Aurantia*.

Materials: Shell (*bulikula*), vegetable fibres, including pandanus (*voivoi*)

Dimensions: Cord: 71 cm; Cowry shell: 9.5 x 5.5 cm

Provenance: Fiji islands

Place of collecting/exchange: Fiji islands

Date of collecting/exchange: 1840

Circumstances of collecting/exchange: US Exploring Expedition

Labels/inscriptions: Has original Peale tag stuck on

Related documentation: Online SI Ex.Ex. cultural objects database:

http://www.sil.si.edu/digitalcollections/usexex/navigation/Anthropology/object_explore.cfm

Archives: Peale catalogue (1846)

Found: Yes

Seen: Yes

Examination/Search date: 18th June 2009

Notes and comments:

Similar to another item in the same collection (E2993)

NMNH_Washington-Necklace-E003045



Photo S. Leclerc-Caffarel © SI

Designation: Neck ornament

Current location: National Museum of Natural History - Washington D.C. (USA)

Current inventory number: E003045

Other numbers: Peale Catalogue Number: 1600

Description: Necklace made of on *Harpa* shell, strung to a cord of vegetable fibres (probably *roga* (*Pipturus argentus*). On the cord, 8 faceted glass bead at intervals. Cord seems to have been cut at both ends

Materials: *Harpa* shell, glass beads, vegetable fibres (*Pipturus argentus*)

Dimensions: Shell approx. 4.5 cm long

Provenance: Fiji islands

Date of collecting/exchange: 1840

Circumstances of collecting/exchange: US Exploring Expedition

Related documentation: Online SI Ex.Ex. cultural objects database:

http://www.si.si.edu/digitalcollections/usexex/navigation/Anthropology/object_explore.cfm

Archives: Peale catalogue (1846)

Found: Yes

Seen: Yes

Examination/Search date: 20th July 2009

Notes and comments: Faceted glass beads are frequent on Fijian artefacts from the Wilkes collection

NMNH_Washington-Necklace-E003168



Photo S. Leclerc-Caffarel © SI

Designation: Neck ornament

Vernacular Name: *Vorovoro*

Current location: National Museum of Natural History - Washington D.C. (USA)

Current inventory number: E003168

Other numbers: Peale Catalogue Number: 1630

Description: Necklace made of small cowry shells, *bulileka* (*Ovula costella*), cut lengthwise and threaded onto a twisted cord of *roga* inner bark (*Pipturus argenteus*)

Materials: Cowry shells (*Ovula costella*), vegetable fibres (*Pipturus argenteus*)

Provenance: Fiji islands?

Place of collecting/exchange: Malolo, Western Fiji island

Date of collecting/exchange: 1840

Circumstances of collecting/exchange: US Exploring Expedition. Old catalogue card indicates Malolo as a place of provenance

Related documentation: Online SI Ex.Ex. cultural objects database:

http://www.si.edu/digitalcollections/usexex/navigation/Anthropology/object_explore.cfm

Archives: Peale catalogue (1846)

Found: Yes

Seen: Yes

Examination/Search date: 18th June 2009

NMNH_Washington-Necklace-E003173



Photo S. Leclerc-Caffarel © SI

Designation: Neck ornament

Current location: National Museum of Natural History - Washington D.C. (USA)

Current inventory number: E003173

Other numbers: Peale Catalogue Number: 1634

Description: Neck ornament, more likely than a belt as written on catalogue card. It is made of *Olivae* shells, individually attached to a braided cord of barkcloth (*masi*) and blackened and natural strands of *magimagi*, by mean of tiny twisted strings of *magimagi* left natural

Materials: Shells, coconut sennit (*magimagi*), barkcloth (*masi*)

Dimensions: 56 cm long

Provenance: Fiji islands

Date of collecting/exchange: 1840

Circumstances of collecting/exchange: US Exploring Expedition

Related documentation: Online SI Ex.Ex. cultural objects database:

http://www.si.edu/digitalcollections/usexex/navigation/Anthropology/object_explore.cfm

Archives: Peale catalogue (1846)

Found: Yes

Seen: Yes

Examination/Search date: 19th June 2009

NMNH_Washington-Necklace-E003179



Photo S. Leclerc-Caffarel © SI

Designation: Neck ornament

Current location: National Museum of Natural History - Washington D.C. (USA)

Current inventory number: E003179

Other numbers: Peale Catalogue Number: 1649

Description: Necklace made of swine's teeth, one faceted glass bead and shell discs, threaded onto a twisted string of vegetable fibres

Materials: Pig's teeth, shell discs, faceted glass bead, vegetable fibres

Provenance: Fiji islands

Date of collecting/exchange: 1840

Circumstances of collecting/exchange: US Exploring Expedition

Related documentation: Online SI Ex.Ex. cultural objects database:

http://www.si.edu/digitalcollections/usexex/navigation/Anthropology/object_explore.cfm

Archives: Peale catalogue (1846)

Found: Yes

Seen: Yes

Examination/Search date: 23rd June 2009

NMNH_Washington-Necklace-E003660



Photo S. Leclerc-Caffarel © SI

Designation: Necklace

Current location: National Museum of Natural History - Washington D.C. (USA)

Current inventory number: E003660

Other numbers: Peale Catalogue Number: 740

Description: "NECKLACE OF CARVED WHALE IVORY BEADS AND AMBER GLASS. SEVEN OF THE IVORY BEADS ARE ROUGHLY BARREL SHAPED, TWO ARE MORE OR LESS OVAL, AND THE SMALL AMBER COLORED GLASS BEADS ARE STRUNG BETWEEN THE IVORY. THE VEGETABLE FIBER CORD DISINTEGRATED AT SOME TIME IN THE PAST AND WAS REPLACED WITH COTTON STRING." (SI)

Materials: Whale ivory, glass beads

Place of collecting/exchange: Marquesas islands

Date of collecting/exchange: 1840

Circumstances of collecting/exchange: US Exploring Expedition, collected by D. SMITH (SI)

Previous collections/owners: Collector: D. SMITH (SI)

Labels/inscriptions: Has original Peale tag

Related documentation: Online SI Ex.Ex. cultural objects database:

http://www.sil.si.edu/digitalcollections/usexex/navigation/Anthropology/object_explore.cfm

Archives: Peale catalogue (1846): "Necklace made of Whale teeth by the native of the Marquesa's Islands."

Found: Yes

Seen: Yes

Examination/Search date: 8th July 2009

Notes and comments: There are a few of such specimens in Fijian early collections from the late 1830s, but their provenance is uncertain. It seems that such necklaces or forms circulated a lot throughout the South Pacific. Here the Fijian attribution seems to have been given in Washington, after the early catalogue work by Peale.

NMNH_Washington-Necklace-E023918



Photo S. Leclerc-Caffarel © SI

Designation: Neck ornament

Current location: National Museum of Natural History - Washington D.C. (USA)

Current inventory number: E23918

Other numbers: Accession number: 5306

Description:

From cat. card: "OLD LABEL: "ELEVEN TEETH OF SPERM WHALE, PHYSETER MACROCEPHALUS, BOUND TOGETHER AT ROOTS WITH STRINGS OF VEGETABLE FIBER, WRAPPED WITH RED COTTON CLOTH; TIED AROUND NECK BY MEANS OF CORDS OF TWISTED AND PLAITED VEGETABLE FIBER." LONGEST TOOTH, 6"; GREATEST DIAMETER, 1 5/8", LENGTH 15"."

The teeth are pierced at both ends, which may indicate they were previously used as ceremonial teeth for presentation (*tabua*)

Materials: Whale's teeth, vegetable fibres, cotton cloth

Provenance: Fiji islands

Place of collecting/exchange: Levuka, Ovalau, Fiji islands

Date of collecting/exchange: Before 1877

Previous collections/owners: Isaac M. Brower, U.S. Consul in Fiji

Related documentation:

Online SI Ex.Ex. cultural objects database:

http://www.si.si.edu/digitalcollections/usexex/navigation/Anthropology/object_explore.cfm

NMNH's database, for the department of anthropology: <http://collections.nmnh.si.edu/search/anth/>

Found: Yes

Seen: Yes

Examination/Search date: 18th June 2009

NMNH_Washington-Ornament-E003002

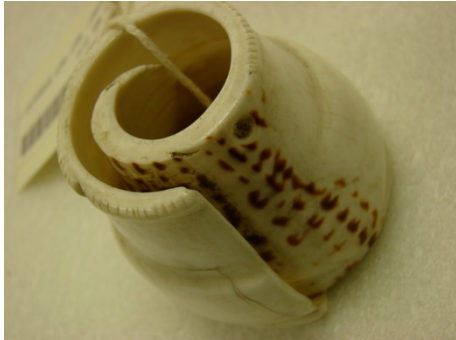


Photo S. Leclerc-Caffarel © SI

Designation: Ear ornament

Vernacular Name: *Saunidaliga*

Current location: National Museum of Natural History - Washington D.C. (USA)

Current inventory number: E003002

Other numbers: Peale Catalogue Number: 1659

Description: Ear ornament made of a section of cone shell (*cava* - *Conus marmoreus*). At the narrow end the rim is ornamented with incised lines.

Materials: Shell (*Conus marmoreus*)

Dimensions: 6 cm diameter x 5 cm high

Provenance: Fiji islands

Place of collecting/exchange: Fiji islands

Date of collecting/exchange: 1840

Circumstances of collecting/exchange: US Exploring Expedition

Related documentation: Online SI Ex.Ex. cultural objects database:

http://www.sil.si.edu/digitalcollections/usexex/navigation/Anthropology/object_explore.cfm

Archives: Peale catalogue (1846)

Bibliography:

Clunie, F. & Ligairi, W., 1983. Fijian Earlobe Slitting and Distortion. *Domodomo*, 1(1), p.22-44.

Found: Yes

Seen: Yes

Examination/Search date: 15th June 2009

Notes and comments: Rare item from early museum collections.

NMNH_Washington-Pendant-E003049



Photo S. Leclerc-Caffarel © SI

Designation: Pendant

Vernacular Name: *Batinivuaka*

Use(s): Old catalogue card reads: "for the forehead" but this is unlikely. More probably a chest ornament, which the Peale catalogue confirms.

Current location: National Museum of Natural History - Washington D.C. (USA)

Current inventory number: E003049

Other numbers: Peale Catalogue Number: 1650

Description: Pendant in the shape of a crescent, made of two curved tusks (*bati*) of pig (*vuaka*). The tusks are assembled by the mean of a strip of *masi* cloth secured with a twisted cord of *magimagi*. Broken at one end.

Materials: Pig/Boar tusks (*batinivuaka*), vegetable fibres, coconut sennit (*magimagi*), barkcloth (*masi*)

Dimensions: Inner diameter: 10.3 cm

Provenance: Fiji islands

Place of collecting/exchange: Fiji islands

Date of collecting/exchange: 1840

Circumstances of collecting/exchange: US Exploring Expedition

Previous collections/owners: Old exhibition label indicates: "Collected by C. Erskine, on Expedition"

Labels/inscriptions:

Has original Peale tag, stuck on

Related documentation: Online SI Ex.Ex. cultural objects database:

http://www.sil.si.edu/digitalcollections/usexex/navigation/Anthropology/object_explore.cfm

Archives: Peale catalogue (1846): "1650-1651: Neck ornaments made of Boar tusks. Fiji Islands."

Found: Yes

Seen: Yes

Examination/Search date: 19th June 2009

Notes and comments: A number of objects like this one were described and represented in early accounts (especially from Dumont d'Urville's voyages) but only a few of them were found in museum collections. It is possible that their rather fragile attachment did not last; the tusks would have been hardly identifiable once separated. That type of pendants is also found elsewhere in the Pacific, including in New Zealand.

NMNH_Washington-Pin-E003194-1



Photo S. Leclerc-Caffarel © SI

Designation: Hair pin

Vernacular Name: *imilamila*

Use(s): Hair pin and scratcher

Current location: National Museum of Natural History - Washington D.C. (USA)

Current inventory number: E003194-1

Description: long hair pin made of a stick of treefern (*balabala*), decorated at top with single-stranded *magimagi* and topped with a tiny roll of pandanus. The latter imitates actual rolls of dry pandanus leaves, used for storage.

Materials: Treefern wood (*balabala*), coconut sennit (*magimagi*), pandanus (*voivoi*)

Dimensions: 41.9 cm long, ornamented part = 24.8 cm, 1.3 cm wide at top

Provenance: Fiji islands

Place of collecting/exchange: Fiji islands

Date of collecting/exchange: 1840

Circumstances of collecting/exchange: US Exploring Expedition

Related documentation: NMNH's online catalogue, for the Anthropology Department:

<http://collections.nmnh.si.edu/search/anth/>

Found: Yes

Seen: Yes

Examination/Search date: 19th June 2009

Notes and comments: The item E3194-0 is a comb (*iseru balabala*)

NMNH_Washington-Pottery-E002816



Photo S. Leclerc-Caffarel © SI

Designation: Pottery

Vernacular Name: *saqa*

Use(s): Drinking vessel

Current location: National Museum of Natural History - Washington D.C. (USA)

Current inventory number: E002816

Other numbers: Peale Catalogue Number: 1741

Description: Earthen vessel in the shape of a double canoe (*drua*). The two "hulls" are linked together by a large hollow handle. Pointed projection on the superior part of the vessels and handle. The surface is glazed, by mean of a vegetable resin (*makadre*) applied on the pot before it cools down, after the firing. One hole on the side of one "hull" and pouring spout on the other. Two more holes at the top of the handle, for filling?

Materials: Clay, resin (*makadre*)

Techniques: Pottery

Provenance: Fiji islands

Place of collecting/exchange: Fiji islands

Date of collecting/exchange: 1840

Circumstances of collecting/exchange: US Exploring Expedition

Related documentation: Online SI Ex.Ex. cultural objects database:

http://www.si.edu/digitalcollections/usexex/navigation/Anthropology/object_explore.cfm

Archives: Peale catalogue (1846)

Found: Yes

Seen: Yes

Examination/Search date: 14th July 2009

NMNH_Washington-Sennit-E003314



Photo © SI

Designation: Roll of coconut sennit

Vernacular Name: *Magimagi*

Current location: National Museum of Natural History - Washington D.C. (USA)

Current inventory number: E003314

Other numbers: Peale Catalogue Number: 1733

Description: Large roll of coconut sennit braided cords, of two colours. The way it is made forms typical lozenge patterns

Materials: Coconut husk fibres (*magimagi*), pigments

Provenance: Fiji islands

Place of collecting/exchange: Fiji islands

Date of collecting/exchange: 1840

Circumstances of collecting/exchange: US Exploring Expedition

Related documentation: Online SI Ex.Ex. cultural objects database:

http://www.si.si.edu/digitalcollections/usexex/navigation/Anthropology/object_explore.cfm

Archives: Peale catalogue (1846)

Found: Yes

Seen: Yes

Examination/Search date: 20th July 2009

Notes and comments: Such items were notably presented during *solevu* as prestigious gifts and valuables (*iyau*)

NMNH_Washington-Skirt-E003253



Photo S. Leclerc-Caffarel © SI

Designation: Skirt

Vernacular Name: *Liku*

Current location: National Museum of Natural History - Washington D.C. (USA)

Current inventory number: E003253

Other numbers: Peale Catalogue Number: 1288

Description: Skirt made of strips of *vau* (inner bark of *hibiscus*) of dark red and brown colour, and white barkcloth. The upper part consist in a waistband of woven hibiscus. The lower part is made of numerous strips of red *vau*, which give its volume to the skirt. Upon these, there is a very neat sheet of plaited white *masi* and dark brown *vau*. These material are woven into a fine chequered pattern.

Materials: Vegetable fibres, barkcloth

Dimensions: 94 cm long without attachment part, 21 cm wide

Provenance: Fiji islands

Place of collecting/exchange: Fiji islands

Date of collecting/exchange: 1840

Circumstances of collecting/exchange: US Exploring Expedition

Previous collections/owners: T.R. Peale

Labels/inscriptions: HAS ORIGINAL PEALE TAG; ALSO AN ATTACHED LABEL READS, "T.R. PEALE". OLD EXHIBIT LABEL "LIKU OR WOMAN'S GIRDLE" (SI)

Related documentation: Online SI Ex.Ex. cultural objects database:

http://www.sil.si.edu/digitalcollections/usexex/navigation/Anthropology/object_explore.cfm

Archives: Peale catalogue (1846)

Found: Yes

Seen: Yes

Examination/Search date: 17th June 2009

NMNH_Washington-Skirt-E003308



Photo S. Leclerc-Caffarel © SI

Designation: Skirt

Vernacular Name: *Liku*

Current location: National Museum of Natural History - Washington D.C. (USA)

Current inventory number: E003308

Other numbers: Peale Catalogue Number: 1379

Description: Skirt made of woven strips of hibiscus inner bark (*vau*) and barkcloth. The lower part of the skirt shows four superposed layers, of different length and shade. The top and third one of these layers are in white *masi* cloth, the two others show the natural golden shade of the *vau*. Upper part of the skirt consists in a large waistband of woven *vau*, with a dominant golden shade.

Materials: Vegetable fibres (*hibiscus*), barkcloth (*masi*)

Provenance: Fiji islands

Place of collecting/exchange: Fiji islands

Date of collecting/exchange: 1840

Circumstances of collecting/exchange: US Exploring Expedition

Labels/inscriptions: Has original Peale tag stuck on

Related documentation: Online SI Ex.Ex. cultural objects database:

http://www.si.si.edu/digitalcollections/usexex/navigation/Anthropology/object_explore.cfm

Archives: Peale catalogue (1846)

Found: Yes

Seen: Yes

Examination/Search date: 7th July 2009

NMNH_Washington-Skirt-E003310



Photo S. Leclerc-Caffarel © SI

Designation: Skirt

Current location: National Museum of Natural History - Washington D.C. (USA)

Current inventory number: E003310

Other numbers: Peale Catalogue Number: 1285

Description: Skirt made of a woven waistband of narrow strips of pandanus (*voivoi*). The lower part consists in large strips of pandanus leaves, dyed in several shades (about 5 cm wide).

Materials: Pandanus (*voivoi*)

Dimensions: 218 cm long x 23 cm wide

Provenance: Fiji islands

Place of collecting/exchange: Fiji islands

Date of collecting/exchange: 1840

Circumstances of collecting/exchange: US Exploring Expedition

Related documentation: Online SI Ex.Ex. cultural objects database:

http://www.sil.si.edu/digitalcollections/usexex/navigation/Anthropology/object_explore.cfm

Archives: Peale catalogue (1846)

Found: Yes

Seen: Yes

Examination/Search date: 17th June 2009

Notes and comments: Quite unusual specimen from early museum collection. A close item, from the same period, at the American Museum of Natural History (New York) (ST/3792)

NMNH_Washington-Skirt-E004524



Photo S. Leclerc-Caffarel © SI

Designation: Skirt

Vernacular Name: *Liku*

Current location: National Museum of Natural History - Washington D.C. (USA)

Current inventory number: E004524

Other numbers: Peale Catalogue Number: 1329

Description: Skirt, made of woven strips of hibiscus inner bark (*vau*). There have several shades, masterly superposed into a chess board pattern in the lower part (black and natural colour of the *vau*). Upper part consists in a large waistband of woven *vau*, with a dominant reddish shade.

Materials: Vegetable fibres, including *vau* (inner bark of Hibiscus)

Provenance: Fiji islands

Place of collecting/exchange: Fiji islands

Date of collecting/exchange: 1840

Circumstances of collecting/exchange: US Exploring Expedition

Previous collections/owners: Collector: Titian R. PEALE (SI)

Labels/inscriptions: HAS ORIGINAL PEALE TAG, THERE ARE ACTUALLY TWO PEALE NUMBERS ON THIS SPECIMEN, #1329 AND #1330 (SI)

Archives: Peale catalogue (1846)

Found: Yes

Seen: Yes

Examination/Search date: 20th July 2009

NMNH_Washington-Wig-E002909



Photo S. Leclerc-Caffarel © SI

Designation: Wig

Vernacular Name: *ulumate*; *ulucavu*

Current location: National Museum of Natural History - Washington D.C. (USA)

Current inventory number: E002909

Other numbers: Peale Catalogue Number: 1809

Description: Wig made of human hair, attached to a wicker work frame. A fall of *tobe* ringlets at the back. These were indicative of high status (e.g. chief, great warrior).

Materials: Human hair, reed, coconut sennit (*magimagi*)

Dimensions: *tobe* approx. 20 cm long

Provenance: Fiji islands

Place of collecting/exchange: Fiji islands

Date of collecting/exchange: 1840

Circumstances of collecting/exchange: US Exploring Expedition

Related documentation:

Online SI Ex.Ex. cultural objects database:

http://www.si.edu/digitalcollections/usexex/navigation/Anthropology/object_explore.cfm

NMNH's online catalogue, for the Anthropology Department: <http://collections.nmnh.si.edu/search/anth/>

Archives: Peale catalogue (1846): "1809-1812: Wigs showing the usual Style of dressing the hair by the Fiji's. On the death of friends or relatives, it is customary to cut off the hair close to the head. These wigs are worn on the expiration of the term of mourning, until the natural hair grows back again: the wigs are made of natural hair dyed and Curled according to the fashion of the day."

Bibliography:

Clunie, F., 1982. Traditional Fijian Hairdressing. *Fiji Heritage*, (February 1982), p.1-9.

Found: Yes

Seen: Yes

Examination/Search date: 30th June 2009

Notes and comments: Rare item, with *tobe* ringlets. Very well preserved.

PEM-Belt-E30492



Photo S. Leclerc-Caffarel © PEM

Designation: Belt

Current location: Peabody Essex Museum - Salem, Massachusetts (USA)

Current inventory number: E30492

Description: Belt made of woven strips of pandanus (*voivoi*), some natural and the others darkened.

Materials: Pandanus, pigments

Provenance: Fiji islands

Date of collecting/exchange: 1830-52

Circumstances of collecting/exchange: Probably acquired by Captain B. Wallis of Salem, bêche-de-mer trader, active in the South Pacific 1830-52.

Previous collections/owners: Capt. B. Wallis via George Swan and Heirs; received by PEM 24 Oct. 1952

Bibliography:

Clunie, F., 2003. *Fijian Weapons and Warfare* Reprint., Suva: Fiji Museum.

Leclerc, S., 2008. *Les collections fidjiennes françaises : l'exemple des collectes Dumont-D'urville*. MA dissertation. Paris: Ecole du Louvre.

Found: Yes

Seen: Yes

Examination/Search date: 13th August 2009

Notes and comments:

The Swan collection actually comprises three belts of this kind (E30492-94). These are quite similar to an object associated with Dumont d'Urville's second voyage (1837-40) and now kept in La Rochelle (H.3397, see Leclerc 2008, II:371). They may also remind chequered sheaths of pandanus that sometimes adorned clubs from the same period, notably *gugu* and *kiakavo* dance clubs (Clunie 2003:104, fig.1c).

PEM-Bracelet-E30515



Photo S. Leclerc-Caffarel © PEM

Designation: Armband, Armlet, Bracelet

Vernacular Name: *Qato*

Use(s): Armlet, worn on the upper arm, just above elbow

Current location: Peabody Essex Museum - Salem, Massachusetts (USA)

Current inventory number: E30515

Description: Arm ornament made of braided *magimagi*. It forms a double loop with a large knot

Materials: Coconut sennit (*magimagi*)

Dimensions: Approx. 9 cm diameter. Knot about 3cm wide

Provenance: Fiji islands

Date of collecting/exchange: 1830-52

Circumstances of collecting/exchange: Probably acquired by Captain B. Wallis of Salem, bêche-de-mer trader, active in the South Pacific 1830-52.

Previous collections/owners: Capt. B. Wallis via George Swan and Heirs; received by PEM 24 Oct. 1952

Related documentation: PEM's catalogue card

Bibliography:

Clunie, F., 1982. Fijian artefacts in Americans museums: a working survey. *Fiji Heritage*, (July 1982), p.1-12. Fig.D.

Found: Yes

Seen: Yes

Examination/Search date: 13th August 2009

Notes and comments: This is a rare type. Similar artefacts exist in a kind of vine, rigid fibre.

PEM-Bracelets-E5177



Photo S. Leclerc-Caffarel © PEM

Designation: Armbands, Armlets, Bracelets

Vernacular Name: *Qato*

Use(s): Ornaments like those were worn on the upper arm, just above the elbow

Current location: Peabody Essex Museum - Salem, Massachusetts (USA)

Current inventory number: E5177

Other numbers: M2843

Description: Ornaments made of a kind of vine

Materials: Vine like creeper

Dimensions: Approx. 10 cm diameter

Provenance: Fiji islands

Date of collecting/exchange: Before 1831

Circumstances of collecting/exchange: Most likely acquired by captain Kinsman, from Salem. Kinsman was in command of the brig *Quill*, and visited Fiji in 1829 for bêche-de-mer

Related documentation: PEM's catalogue card

Found: Yes

Seen: Yes

Examination/Search date: 13th August 2009

Notes and comments: Such items are quite frequent in early museum collections from Fiji

PEM-Breastplate-E5281



Photo S. Leclerc-Caffarel © PEM

Designation: Breastplate

Vernacular Name: *Civa*

Current location: Peabody Essex Museum - Salem, Massachusetts (USA)

Current inventory number: E5281

Other numbers: M2661

Description: Breastplate made of a large oyster shell (*civa*), polished and perhaps cut to give it a more pointy shape. It has a yellowy, copper glaze. Originally, there must have been two holes, one of each side of the thick part, but one is now broken. These holes served for the suspension of the plate round the neck. We cannot be sure that the cord is the original. The cord catalogued under the same number as the plate is a braided cord of vegetable fibres, blackened on the outside with what looks like a quite thick coating.

Materials: Vegetable fibres, oyster shell (*civa*)

Dimensions: Approx. 13 x 12.6 cm

Provenance: Fiji islands

Place of collecting/exchange: Fiji islands

Date of collecting/exchange: Before 1823

Circumstances of collecting/exchange: Likely acquired by captain B. Vanderford in Fiji, during one trading expedition in search for sandalwood (in the 1820s)

Previous collections/owners: Perhaps acquired during the voyage of the *Roscoe* (1821-23), brig from Salem, captain B. Vanderford

Related documentation: PEM's catalogue card

Found: Yes

Seen: Yes

Examination/Search date: 13th August 2009

PEM-Breastplate-E5282



Photo S. Leclerc-Caffarel © PEM

Designation: Breastplate

Vernacular Name: *Civa*

Use(s): Chest ornament

Current location: Peabody Essex Museum - Salem, Massachusetts (USA)

Current inventory number: E5282

Description: Small polished *civa* shell (oyster pearlshell) with two holes on flat part for suspension and serrations all around the circular edge. White iridescent glaze. Some serrations look worn out.

Materials: Oyster pearlshell

Dimensions: 7 x 7.9 cm

Place of collecting/exchange: Fiji islands

Related documentation: PEM's catalogue card

Found: Yes

Seen: Yes

Examination/Search date: 13th August 2009

PEM-Club-E4807



Photo S. Leclerc-Caffarel © PEM

Designation: Club

Vernacular Name: *Vunikau*

Use(s): This is likely to have been a ceremonial artefact, as the shell wrapping made it not functional any more.

Current location: Peabody Museum Harvard - Cambridge, Massachusetts (USA)

Current inventory number: E4807

Other numbers: M 4411

Description: *Vunikau* two-handed club, cover all over with *magimagi* strings onto which tiny shell discs have been individually attached. Two glass beads are also visible at the head of the club, one blue and the other white.

Materials: Hardwood (*nokonoko*), coconut sennit (*magimagi*)

Dimensions: 108.5 cm long and 11.8 cm for the diameter of the head

Place of collecting/exchange: Fiji islands

Date of collecting/exchange: Before 1832

Circumstances of collecting/exchange: Acquired by Captain Eagleston or his men before 1832, during bêche-de-mer trading expedition.

Previous collections/owners: Eagleston, John Henry. Donated to Essex Institute in 1832

Related documentation: PEM's catalogue card

Found: Yes

Seen: Yes

Examination/Search date: 13th August 2009

Notes and comments: Note on cat. card by Fergus Clunie, in May 1982, reads: "very rare shell wrappings"

PEM-Club-E4873



Photo S. Leclerc-Caffarel © PEM

Designation: Throwing club

Vernacular Name: *iula gasau*

Current location: Peabody Essex Museum - Salem, Massachusetts (USA)

Current inventory number: E4873

Description: On catalogue card, Clunie wrote: “probably the rarest of Fijian throwing club. The name suggests it is modelled after the throwing dart used in the *tiqa* game, as does its shape” (see also Clunie 2003:143, fig.21i-j). This item has an entirely carved surface, partitioned in several registers in which *tavatava* and hatching patterns alternate. The carving technique, in *graffito* (?), might suggest a Tongan origin, which would also match the period of acquisition better.

Materials: Wood

Techniques: Wood carving

Dimensions: 55 x 5.4 cm

Provenance: Tonga islands (?)

Date of collecting/exchange: Before 1826

Circumstances of collecting/exchange: Probably collected by a bêche-de-mer trader from Salem

Previous collections/owners:

Donor: Mr. Gerry

Received: 1826

Related documentation: PEM's catalogue card

Bibliography:

Clunie, F., 2003. *Fijian Weapons and Warfare* Reprint., Suva: Fiji Museum.

Found: Yes

Seen: Yes

Examination/Search date: 13th August 2009

PEM-Club-E4875

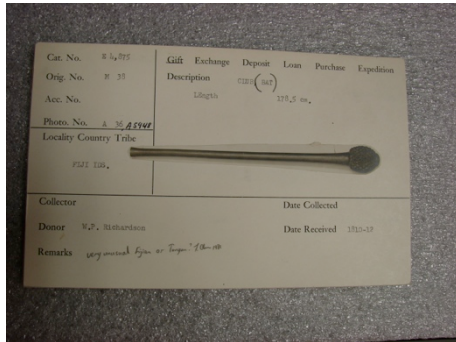


Photo S. Leclerc-Caffarel © PEM

Designation: Club

Current location: Peabody Essex Museum - Salem, Massachusetts (USA)

Current inventory number: E4875

Other numbers: M38

Description: Club made of a long shaft (over 178 centimetres), onto which a spherical head, carved with small conical projections, seems to have been embedded (information from cat. card)

Materials: Wood

Techniques: Wood carving

Dimensions: 178.5 cm

Provenance: ?

Date of collecting/exchange: Before 1812

Circumstances of collecting/exchange:

Acquired by William P. Richardson, sandalwood trader from Salem (Mass.)

Related documentation: PEM's catalogue card

Found: No

Seen: No

Examination/Search date: 11th August 2009

Notes and comments: Unusual club. Uncertain provenance.

PEM-Club-E5067



Photo S. Leclerc-Caffarel © PEM

Designation: Throwing club

Vernacular Name: *iula tavatava*

Current location: Peabody Essex Museum - Salem, Massachusetts (USA)

Current inventory number: E5067

Materials: Hardwood

Techniques: Wood carving

Dimensions: 44.5 x 8 cm

Provenance: Fiji islands

Date of collecting/exchange: Before 1831

Circumstances of collecting/exchange: Most likely collected by a bêche-de-mer trader from Salem

Previous collections/owners:

Donor: Samuel Edgerly

Received between 1821-1831

Related documentation: PEM's catalogue card

Found: Yes

Seen: Yes

Examination/Search date: 13th August 2009

PEM-Club-E5108



Photo S. Leclerc-Caffarel © PEM

Designation: Club

Vernacular Name: *Kinikini*

Use(s): Clunie described such clubs as chief's or priest's artefacts (Clunie 2003:127).

Current location: Peabody Essex Museum - Salem, Massachusetts (USA)

Current inventory number: E5108

Other numbers: M2671

Description: This specimen is over 122 centimetres long and 32 centimetres broad. The picture on the catalogue card shows strips of vegetable fibres, most likely from pandanus leaves (*voivoi*), at the top and bottom of its shaft.

Materials: Wood, pandanus (*voivoi*)

Dimensions: 122 x 32 cm

Provenance: Fiji islands

Date of collecting/exchange: Before 1823

Circumstances of collecting/exchange: Most likely acquired by Benjamin Vandereford, a trading captain from Salem (Mass.), employed in sandalwood, and then bêche-de-mer trade.

Related documentation: PEM's catalogue card

Bibliography:

Clunie, F., 2003. *Fijian Weapons and Warfare* Reprint., Suva: Fiji Museum.

Found: No

Seen: No

Examination/Search date: 10th August 2009

PEM-Club-E5111



Photo S. Leclerc-Caffarel © PEM

Designation: Club

Vernacular Name: *Cali* or *sali*

Use(s): Likely to have been an important artefact, highly valuable.

Current location: Peabody Essex Museum - Salem, Massachusetts (USA)

Current inventory number: E5111

Other numbers: M 4411

Description: *Cali* two-handed club made of hardwood (*nokonoko*). The blade has two perforations in the shape of affronted triangles. Such a décor can be observed on clubs from the 1830s on. The shaft is covered with sennit lashing, onto which small shell discs have been threaded. The lashing is a bit loose towards the grip.

Materials: Hardwood (*nokonoko*), coconut sennit (*magimagi*), shell discs

Techniques: Wood carving, lashing

Dimensions: 107.5 x 29.3 cm

Provenance: Fiji islands

Place of collecting/exchange: Fiji islands

Circumstances of collecting/exchange: On PEM's cat. card, F. Clunie suggested an acquisition circa. 1860.

Related documentation: PEM's cat. card

Found: Yes

Seen: Yes

Examination/Search date: 13th August 2009

PEM-Coconut-E30547



Photo S. Leclerc-Caffarel © PEM

Designation: Coconut

Use(s): From cat. card: "If Fijian, probably a coconut *tabu* symbol??. F. Clunie"

Current location: Peabody Essex Museum - Salem, Massachusetts (USA)

Current inventory number: E30547

Other numbers: Accession number: 12 762

Description: From cat. card: "Husk left on eye end. Large end exposed. Length of two-strand twisted coir line secured around nut at junction with husk." Cord damaged. One piece cut off.

Materials: Coconut

Dimensions: Approx. 18 x 20 cm

Date of collecting/exchange: 1830-52

Circumstances of collecting/exchange: Probably acquired by Captain B. Wallis of Salem. Active in the South Pacific 1830-52.

Previous collections/owners: Capt. B. Wallis; George Swan and Heirs; received by PEM 24 Oct. 1952

Related documentation: PEM's cat. Card

Found: Yes

Seen: Yes

Examination/Search date: 10th August 2010

PEM-Comb-E5150



Photo S. Leclerc-Caffarel © PEM

Designation: Comb

Vernacular Name: *iseru balabala*

Use(s): From Clunie's note on catalogue card: likely to have been a priest's ornamental comb

Current location: Peabody Essex Museum - Salem, Massachusetts (USA)

Current inventory number: E5150

Description:

From catalogue card: "Long black teeth, bound together by brown sennet in tasteful triangular and hour-glass design; middle teeth shorter, which gives the handle its two horned shape."

Note from F. Clunie, in pencil, on catalogue card: "*i seru balabala* - composite comb (*i seru*) made of strips of tree fern (*balabala*) wood bound together with single strand magimagi (coconut husk fibre). I doubt a woman's - more likely man's, and most likely a priest's. Not a functional comb - purely ornamental, worn with handle upright at back of head, handle projecting above hair. 1801 collection date suspiciously early. F. Clunie, Fiji Museum, May 1982."

Materials: Wood from tree fern (*balabala*) and coconut sennit single strand (*magimagi*)

Dimensions: 37.7 cm long

Provenance: Fiji islands

Date of collecting/exchange: early 1800s

Found: Yes

Seen: Yes

Examination/Search date: 13th August 2009

Notes and comments: Similar club, with darkened teeth bound together with a single strand of natural *magimagi* found in the Wilkes collection (1840, NMNH, Washington D.C.)

PEM-Comb-E5170



Photo S. Leclerc-Caffarel © PEM

Designation: Comb

Vernacular Name: *iseru balabala*

Current location: Peabody Essex Museum - Salem, Massachusetts (USA)

Current inventory number: E5170

Other numbers: E.I. 365

Description: Comb made of 14 sticks of treefern wood (*balabala*), pointed at one end. Their top parts are bound together by means of single-stranded coconut sennit (*magimagi*). The teeth of the comb are black and the *magimagi* lashing keeps its natural copper-like colour. The comb is topped with a split piece of bone, which is exceptional.

Materials: Treefern wood (*balabala*), coconut sennit (*magimagi*), bone

Dimensions: 17.1 cm long, bone 5.7 cm

Provenance: Fiji islands

Circumstances of collecting/exchange: Unknown

Previous collections/owners: Mrs Crandall. The PEM's catalogue card indicates a possible date of registration in the 1820s

Related documentation: PEM's catalogue card. Note by F. Clunie: "*i seru balabala* — tree fern (*balabala*) wood. Split bone cap very unusual."

Found: Yes

Seen: Yes

Examination/Search date: 13th August 2009

Notes and comments: The top bone and flared shape give this comb the allure of a small *burekalou*

PEM-Comb-E30525



Photo S. Leclerc-Caffarel © PEM

Designation: Comb

Vernacular Name: *iseru sasa*

Use(s): Ornamental comb, worn at the back of the head

Current location: Peabody Essex Museum - Salem, Massachusetts (USA)

Current inventory number: E30525

Other numbers: Accession number: 12 762

Description:

Comb made of coconut palms mid-ribs (*sasa*) lashed together by the mean of extremely fine single-stranded *magimagi* of dark colour (E30525). Intertwined within the *magimagi* fibres there are a few glass beads, precisely distributed onto the woven décor. On the top of one of the longest teeth, there is a small white cowry, and another might be missing from the opposite side.

Materials: coconut palm mid-ribs (*sasa*), coconut sennit (*magimagi*), glass beads

Provenance: Fiji islands

Date of collecting/exchange: 1830-52

Circumstances of collecting/exchange: Probably acquired by Captain B. Wallis of Salem, bêche-de-mer trader, active in the South Pacific 1830-52.

Previous collections/owners: Capt. B. Wallis via George Swan and Heirs; received by PEM 24 Oct. 1952

Related documentation: PEM's catalogue card, with note by Clunie about the use of such combs

Bibliography:

Clunie, F., 1982. Fijian artefacts in Americans museums: a working survey. *Fiji Heritage*, (July 1982), p.1-12. Fig.F.

Found: Yes

Seen: Yes

Examination/Search date: 13th August 2009

PEM-Flute-E30523



Photo S. Leclerc-Caffarel © PEM

Designation: Nose flute

Vernacular Name: *Bituucu*

Current location: Peabody Essex Museum - Salem, Massachusetts (USA)

Current inventory number: E30523

Description: Nose flute made of one internode of bamboo (*bitu*) and entirely decorated with scratched and burnt incisions

Materials: Bamboo

Techniques: Pyrography

Dimensions: Approx. 60 cm long

Provenance: Fiji islands

Date of collecting/exchange: 1830-52

Circumstances of collecting/exchange: Probably acquired by Captain B. Wallis of Salem, bêche-de-mer trader, active in the South Pacific 1830-52.

Previous collections/owners: Capt. B. Wallis via George Swan and Heirs; received by PEM 24 Oct. 1952

Found: Yes

Seen: Yes

Examination/Search date: 13th August 2009

PEM-Handle-E46995



Photo S. Leclerc-Caffarel © PEM

Designation: Handle

Vernacular Name: *Matakilagi*

Use(s): Probably the handle of a chiefly staff (*matakilagi*), rather than that of a walking stick (*ititoko*) (Clunie 1982)

Current location: Peabody Essex Museum - Salem, Massachusetts (USA)

Current inventory number: E46995

Other numbers: E.I. 3024

Description: Tubular piece of walrus ivory, carved. Three groups of rounded disks on the top, middle and bottom of the item. One piece of ivory. Hollow base. Rounded knobs at the top. Carved with typical *tavatava* (zigzags) patterns, which suggest a Fijian provenance in spite of an unusual shape and use of walrus ivory.

Materials: Walrus ivory

Techniques: Carving

Dimensions: 21.5 cm long; 3.6 cm diameter

Place of collecting/exchange: Fiji islands

Date of collecting/exchange: Before 1831

Circumstances of collecting/exchange: Probably during the voyage of the *Quill*, captain Kinsman of Salem (Clunie 1982)

Previous collections/owners: Captain J. Kinsman (Clunie 1982)

Related documentation: Catalogue card of the PEM. Note in Fergus Clunie's handwriting reads: "Listed in E.I.M. catalogue under 3024 / Probably handle of a chief's walking staff: *matanakilagi*. I have heard of ivory handled ones, but never seen one. Walrus tusk imported as giant whale teeth by Salem traders — made into *tabua* ceremonial whale teeth, headrests, *wasekaseka* necklace components, etc. etc. / Fergus Clunie, Fiji Museum, May 1982"

Bibliography:

Clunie, F., 1982. Fijian artefacts in Americans museums: a working survey. *Fiji Heritage*, (July 1982), p.1-12.

Found: Yes

Seen: Yes

Examination/Search date: 10th August 2009

PEM-Necklace-E5161



Photo S. Leclerc-Caffarel © PEM

Designation: Neck ornament

Current location: Peabody Essex Museum - Salem, Massachusetts (USA)

Current inventory number: E5161

Other numbers: M2655

Description: Necklace made of small conical shells, of grey shade (a variety of sea snails). These shells are strung on a vegetable fibre, quite rigid.

Materials: Vegetable fibre, shells

Dimensions: 9 cm in diameter

Date of collecting/exchange: Before 1823

Circumstances of collecting/exchange: Most likely acquired by Benj. Vanderford during voyage of the *Clay*, which visited Fiji in 1822 in search for sandalwood but also located bêche-de-mer.

Related documentation: PEM's catalogue card

Found: Yes

Seen: Yes

Examination/Search date: 13th August 2009

PEM-Necklace-E5164



Photo S. Leclerc-Caffarel © PEM

Designation: Neck ornament

Current location: Peabody Essex Museum - Salem, Massachusetts (USA)

Current inventory number: E5164

Other numbers: M4346

Description: Necklace made of a twisted cord of hibiscus bast (*vau*), to which a number of pendants in mother-of-pearl are attached by mean of another kind of vegetable fibre, single-stranded. Five pendants consist in long strips of mother-of-pearl, of triangular or rectangular shape. Some of them may have been broken at their end. The other pendants have the shape of small animals, with four legs around a rounded body, most likely turtles.

Materials: Mother-of-pearl, vegetable fibres including *vau* (hibiscus inner bark)

Dimensions: Longest pendant: 8.5 cm

Date of collecting/exchange: Before 1832

Circumstances of collecting/exchange: Probably collected during a trading expedition, when Salem merchants were looking for *bêche-de-mer* and turtle shells in Fiji

Previous collections/owners: Donor: J.W. Cheever. Cheever in a redundant name in the naval history of Salem, but more research need to be done on this particular individual (initials J.W.)

Related documentation: PEM's catalogue card

Found: Yes

Seen: Yes

Examination/Search date: 13th August 2009

Notes and comments: Very interesting object, which illustrates formal connexions between ivory necklaces and pendants and artefacts made of mother-of-pearl like this one.

PEM-Necklace-E5206



Photo S. Leclerc-Caffarel © PEM

Designation: Neck ornament

Current location: Peabody Essex Museum - Salem, Massachusetts (USA)

Current inventory number: E5206

Other numbers: M2851

Description: necklace made of a braided cord in vegetable fibres — possibly *roga* (*Pipturus argenteus*), found on prestigious Fijian ornaments (Clunie 2003:fig.105). Two rows of pink *olivae* shells are attached to this cord, at short intervals, which creates an impression of density and fluidity at the same time.

Materials: Vegetable fibres, shells

Dimensions: One shell about 2 cm long

Provenance: Fiji islands

Date of collecting/exchange: Before 1831

Circumstances of collecting/exchange: Probably acquired by J. Kinsman, commander of the Quill from Salem. In Fiji in 1829 for bêche-de-mer.

Previous collections/owners: Donor: J. Kinsman between 1821 and 1831

Related documentation: PEM's catalogue card

Bibliography:

Clunie, F., 2003 (1986). *Yalo i Viti: A Fiji Museum Catalogue*, Suva, Fiji: Fiji Museum.

Found: Yes

Seen: Yes

Examination/Search date: 13th August 2009

PEM-Necklace-E30509



Photo S. Leclerc-Caffarel © PEM

Designation: Neck ornament

Current location: Peabody Essex Museum - Salem, Massachusetts (USA)

Current inventory number: E30509

Other numbers: Accession number: 12 762

Description: Neck ornament made of a braided cord of vegetable fibres, into which tiny glass beads of lavender shade have been threaded.

Materials: Vegetable fibres, glass beads

Dimensions: Approximately 46 cm long

Place of collecting/exchange: Fiji islands

Date of collecting/exchange: 1830-52

Circumstances of collecting/exchange: Probably collected by captain Wallis, of Salem (cf. note on catalogue card)

Previous collections/owners: Captain B. Wallis; George Swan and his heirs (donors to PEM in 1952)

Related documentation: PEM's catalogue card

Found: Yes

Seen: Yes

Examination/Search date: 11th August 2009

Notes and comments: Similar beads observed in other collections, notably on combs in Maidstone (UK) in the Brenchley collection (1865)

PEM-Needle-E5260



Photo S. Leclerc-Caffarel © PEM

Designation: Needle

Vernacular Name: *Saulaca*

Use(s): Sail needle

Current location: Peabody Essex Museum - Salem, Massachusetts (USA)

Current inventory number: E5260

Other numbers: M4568

Description: Pointed narrow piece of human bone, with a large eye at one end. Concave on one side

Materials: Human bone

Dimensions: 32 cm long

Provenance: Fiji islands

Date of collecting/exchange: Before 1834

Circumstances of collecting/exchange: Probably collected by a bêche-de-mer trader from Salem, in Fiji

Previous collections/owners: Donor: J.B. Knight, i.e. probably John B. Knights of the brig *Spy*

Related documentation: PEM's catalogue card

Archives:

Knights, John B. 1832-33, Journal of the *Spy*, of Salem. Canberra: PMB Mf. 220.

Found: Yes

Seen: Yes

Examination/Search date: 13th August 2009

Notes and comments: Rare item in early collections

PEM-Ornament-E5363



Photo S. Leclerc-Caffarel © PEM

Designation: Ear ornament

Vernacular Name: *Saunidaliga*

Use(s): see Clunie & Ligairi (1983)

Current location: Peabody Essex Museum - Salem, Massachusetts (USA)

Current inventory number: E5363

Other numbers: M2652

Description: Ear ornament made of a white tubular piece of shell(?), carved with serrations and little crosses at both extremities

Materials: Shell(?)

Dimensions: 6.1 cm long; 2.3 cm diameter

Provenance: Fiji islands

Place of collecting/exchange: Fiji islands

Date of collecting/exchange: Before 1823

Circumstances of collecting/exchange: Acquired by Benjamin Vanderford, sandalwood trader from Salem, probably during voyage of the *Clay* (in Fiji in 1822)

Previous collections/owners: Benjamin Vanderford

Related documentation: PEM's catalogue card. Note by Clunie (1982): "*sau-ni-daliga* - ornament worn through lobe of ear — by both sexes. Every Fijian was required by religion to have the ears pierced and expanded for a plug. Extremely rare type."

Bibliography:

Clunie, F. & Ligairi, W., 1983. Fijian Earlobe Slitting and Distortion. *Domodomo*, 1(1), p.22-44.

Found: Yes

Seen: Yes

Examination/Search date: 13th August 2009

PEM-Shovel-E4887

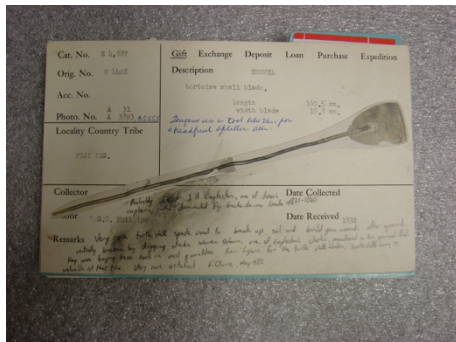


Photo S. Leclerc-Caffarel © PEM

Designation: Spade

Use(s): Note on PEM's cat. card: "Very rare turtle spade used to break up soil and build yam mounds, after ground initially broken by digging sticks. Warren Osborn, one of Eagleston's clerks, mentioned in his journal that they were buying these tools in vast quantities from Fijians for the turtle shell blades, turtle shell being so valuable at that time. Very rare artefact. F. Clunie, May 1982."

Current location: Peabody Essex Museum - Salem, Massachusetts (USA)

Current inventory number: E4887

Other numbers: Original number: M4408

Description: Shovel, made of a long stick to which a turtle shell blade is attached

Materials: Wood, turtle shell, vegetable fibres

Dimensions: 160.5 cm long; width of blade: 18.8cm

Place of collecting/exchange: Fiji islands

Date of collecting/exchange: Before 1832

Previous collections/owners: Probably collected by Cap. J.H. Eagleston or his men, bêche-de-mer traders (see note by Clunie on cat. card)

Related documentation: PEM's catalogue card

Found: No

Seen: No

Examination/Search date: August 2010

PEM-Spear-E4984



Photo S. Leclerc-Caffarel © PEM

Designation: Spear

Vernacular Name: *Tikau*

Use(s): Rare artefact, with shell wrappings. Probably a prestigious spear, reserved to people of high rank.

Current location: Peabody Essex Museum - Salem, Massachusetts (USA)

Current inventory number: E4984

Description: Wooden spear, made of one piece of hardwood. Its point is skilfully carved. The top of the spear is wrapped with shell discs in several places, to underline the carving. The shell disks are threaded onto what looks like an European cord, made of non identified vegetable fibres. not *magimagi* (coconut sennit) as indicated on the catalogue card.

Materials: Shell, wood, vegetable fibres

Dimensions: 310 cm long

Provenance: Fiji islands

Date of collecting/exchange: Note in F. Clunie's hand indicates a possible date of acquisition "circa 1840"

Related documentation: PEM's catalogue card

Found: Yes

Seen: Yes

Examination/Search date: 13th August 2009

PEM-Temple-E5037



Photo © PEM

Designation: Temple model

Vernacular Name: *Burekalou*

Use(s): Small temple, used as a receptacle to the god's essence. F. Clunie's note on PEM's cat. card: "*bure kalou* — kept in sacred part of temple — sometimes contained small wood or ivory idol."

Current location: Peabody Essex Museum - Salem, Massachusetts (USA)

Current inventory number: E5037

Other numbers: M4601

Description: *Burekalou* model. Structure in light wood but mostly built up in coconut sennit (*magimagi*), coiled and woven. This artefact has a double roof, which is very unusual. F. Clunie wrote on catalogue card: "double roof probably unique." The top beam of both roofs, as well as the door frame, are decorated with shell discs, similar to those sometimes seen on early ceremonial weapons.

Materials: Shell beads, wood, coconut sennit (*magimagi*)

Dimensions: Approx. 110 cm high

Provenance: Fiji islands

Date of collecting/exchange: before 1835

Circumstances of collecting/exchange: Perhaps collected during the voyage of the *Eliza* of Salem (1833-35), captain Joseph Winn, owner S.C. Phillips.

Previous collections/owners: Jos. Winn, Jr. (donor). Received by Essex Institute in 1835

Related documentation: PEM's catalogue card

Found: Yes

Seen: Yes

Examination/Search date: 11th August 2009

Notes and comments:

In permanent display at the PEM in 2009.

No information found about that artefact in possibly related logs, to date.

PRM-Necklace-1884.99.15



Photo S. Leclerc-Caffarel © PRM

Designation: Neck ornament (?)

Use(s): Old label attached to the object reads: "Used as a currency in some Melanesian Islands"

Current location: Pitt Rivers Museum - Oxford (UK)

Current inventory number: 1884.99.15

Description: Necklace (?) made of approximately 70 half-jaws of flying-fox bats (*beka*). These lower jaws have been cut lengthwise and they are pierced at their rear part to allow the passage of a string of twisted *vau* (inner bark of the *Hibiscus*).

Materials: Jaws of flying-fox bats, vegetable fibres, *vau* (hibiscus)

Provenance: Fiji islands

Previous collections/owners: From Pitt Rivers' old collection

Related documentation: PRM's online catalogue: <http://objects.prm.ox.ac.uk/pages/PRMUID130661.html>

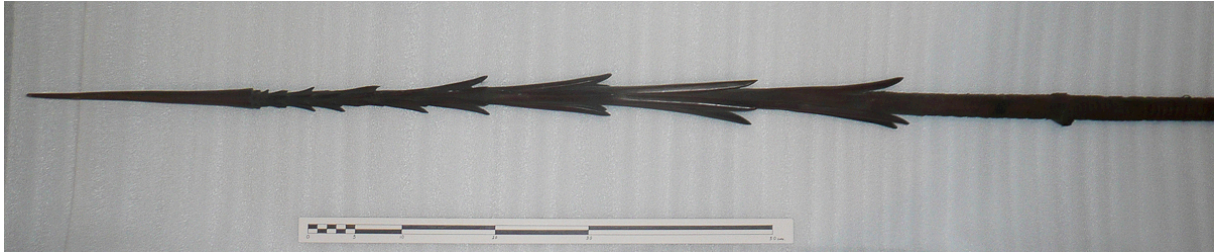
Found: Yes

Seen: Yes

Examination/Search date: 18th February 2010

Notes and comments: Another artefact made of flying fox's jaws exists in the early collection from Fiji at the Quai Branly (72.56.723). It was collected during Dumont d'Urville's second passage in Fiji (1838). This one seems to be a necklace, where 25 jaws (intact) are attached individually to a twisted cord of red *vau* (hibiscus).

PRM-Spear- 1886.1.1508



Photograph © PRM

Designation: Spear

Current location: Pitt Rivers Museum - Oxford (UK)

Current inventory number: 1886.1.1508

Other numbers: Forster 68

Description: Barbed spear made on one piece of dark hardwood and wrapped with coconut sennit.

Materials: Hardwood, coconut sennit

Dimensions: 3075 mm x 58 mm (PRM)

Place of collecting/exchange: Tonga islands

Date of collecting/exchange: Between 2 and 7 October 1773 or between 26 and 29 June 1774

Circumstances of collecting/exchange: Cook's second voyage (1772-75)

Previous collections/owners:

Johann Reinhold Forster and George Forster (field collectors)

Ashmolean museum, from January 1776. Transferred to PRM 19 April 1886.

Related documentation:

PRM's online catalogue: <http://objects.prm.ox.ac.uk/pages/PRMUID25875.html> (for archives, display history and related publications)

The Forster Collection at the PRM: <http://objects.prm.ox.ac.uk/forster/resources.html>

Bibliography:

Kaeppler, A., 1978. « *Artificial curiosities* »: being an exposition of native manufactures collected on the three Pacific voyages of Captain James Cook, R.N. at the Bernice Pauahi Bishop Museum, January 18 1978-August 31 1978, Honolulu, Hawaii: Bishop Museum Press. pp.237-38, fig.504.

Found: Yes

Seen: No