

Satellite data for the offshore renewable energy sector: synergies and innovation opportunities

E. Medina-Lopez^{a,*}, D. McMillan^b, J. Lazic^c, E. Hart^b, S. Zen^a, A. Angeloudis^a, E. Bannon^d, J. Browell^b, S. Dorling^e, R.M. Dorrell^f, R. Forster^f, C. Old^g, G.S. Payne^h, G. Porterⁱ, A.S. Rabaneda^f, B. Sellar^g, E. Tapoglou^f, N. Trifonova^j, I.H. Woodhouse^k, A. Zampollo^j

^a *Institute for Infrastructure and Environment, School of Engineering, The University of Edinburgh, The King's Buildings, Edinburgh, UK*

^b *University of Strathclyde*

^c *Bayes Centre, The University of Edinburgh*

^d *Wave Energy Scotland*

^e *Weatherquest Ltd.*

^f *University of Hull, Cottingham Rd., Hull HU6 7RX UK*

^g *Institute for Energy Systems, School of Engineering, The University of Edinburgh, The King's Buildings, Edinburgh EH9 3JL, UK*

^h *Laboratoire de recherche en Hydrodynamique, Énergétique et Environnement Atmosphérique, Ecole Centrale Nantes, 1 rue de la Noë, 44300 Nantes, France*

ⁱ *Orbital Micro Systems*

^j *School of Biological Sciences, University of Aberdeen, Tillydrone Ave, Aberdeen AB24 2TZ, UK*

^k *School of Geosciences, The University of Edinburgh, Edinburgh EH9 3JL, UK*

Abstract

Can satellite data be used to address challenges currently faced by the Offshore Renewable Energy (ORE) sector? What benefit can satellite observations bring to resource assessment and maintenance of ORE farms? Can satellite observations be used to assess the environmental impact of offshore renewables leading towards a more sustainable ORE sector? This review paper faces these questions presenting a holistic view of the current interactions between satellite and ORE sectors, and future needs to make this partnership grow. The aim of the work is to start the conversation between these sectors by establishing a common ground. We present offshore needs and satellite technology limitations, as well as potential opportunities and areas of growth. To better understand this, the reader is guided through the history, current developments, challenges and future of offshore wind, tidal and wave energy technologies. Then, an overview on satellite observations for ocean applications is given, covering types of instruments and how they are used to provide different metocean variables, satellite performance, and data processing and integration. Past, present and future satellite missions are also discussed. Finally, the paper focuses on innovation opportunities and the potential of synergies between the ORE and satellite sectors.

Specifically, we pay attention to improvements that satellite observations could bring to standard measurement techniques: assessing uncertainty, wind, tidal and wave conditions forecast, as well as environmental monitoring from space. Satellite-enabled measurement of ocean physical processes and applications for fisheries, mammals and birds, and habitat change, are also discussed in depth. *Keywords:* Satellite data, Offshore Renewable Energy (ORE), wind, tidal, wave, SAR, sustainable ORE sector

Table of contents

| | | |
|----------|---|-----------|
| 1 | Introduction | 2 |
| 2 | The offshore renewable energy industries | 5 |
| 2.1 | Offshore wind energy | 6 |
| 2.2 | Tidal energy | 10 |
| 2.3 | Wave energy | 18 |
| 3 | Satellite observations in the ocean | 24 |
| 3.1 | Satellite performance | 24 |
| 3.2 | Satellite data processing | 32 |
| 3.3 | Past, present and future satellite missions | 35 |
| 4 | Satellite data for offshore renewable energy: synergies and innovation opportunities | 42 |
| 4.1 | Satellite data to reduce uncertainties for offshore wind farm operation | 42 |
| 4.2 | Satellite data for short-term power forecasting | 43 |
| 4.3 | Satellite data for wave forecasting | 46 |
| 4.4 | Satellite data for tidal forecasting | 49 |
| 4.5 | Satellite data for environmental monitoring | 50 |
| 5 | Conclusions | 60 |

1. Introduction

The motivation for this study arises from a need for cost reduction in the way metocean data is typically collected in the marine environment (*e.g.* by using offshore meteorological stations,

*Corresponding author
Email address: emedina@ed.ac.uk (E. Medina-Lopez)

which are expensive to deploy and maintain due to the harsh marine weather conditions), and how
5 this data gathering process affects the total cost of energy in offshore renewable energy projects.
Marine data has an impact in all phases of a marine renewable farm development, including initial
stages such as site selection and device design, but also construction (particularly during operations
and maintenance) and decommissioning. Nowadays, the planning of operations and maintenance
(O&M) missions and vessels dispatching for offshore installations is limited to updated numerical
10 weather forecasts every 6 to 12 hours. Being able to correctly predict, on a short-term, the weather
conditions will allow the optimisation of cost and resources for O&M. Moreover, the correct es-
timate of access windows that allow the crew to conduct the management operations safely is
difficult due to the high degree of uncertainty characterising the modelling tools currently available
for managers.

15

Satellite-based measurements have long been identified as having a potential role in enabling
cost reduction of marine renewables, but applications have been largely limited to wind resource
assessment and wake modelling. Offshore climate information is derived from various key satellite
datasets. Offshore wind resource can be derived from satellite synthetic aperture radar (SAR) for
20 localised use, and satellite scatterometers at a wider scale. SARs can also be used to model wave
and tidal resource, and satellite altimeters are specifically used for wave resource characterisation.
Different research studies have estimated offshore wind, wave and tidal resource using satellite
imagery. Examples for offshore wind include Hasager (2014) and Hasager et al. (2015). From the
wave resource perspective, Goddijn-Murphy et al. (2015), Zen et al. (2020) and Guillou et al. (2020)
25 are some representative examples of work in this area. In the tidal area, there is less literature
available, but Alifdini et al. (2018) and Geyman and Maloof (2020) are good examples of efforts in
the right direction. There is a great range of free and open satellite datasets that are relevant for
ORE applications. As an example, Copernicus Sentinel-1 is a SAR that has been operating since
2014, providing coverage over Europe, Canada and main shipping routes in 2–4 days, regardless
30 of weather conditions. SAR data is delivered to Copernicus services within an hour of acquisition,
Copernicus (2020). Its high resolution (20m) allows sufficiently detailed coverage of relevant areas.

The information can be download from the Sentinel Hub online system and operated locally using the Sentinel Application Platform (SNAP) for satellite data, European Space Agency (2020*b*), or it can be operated online from Google Earth Engine some days after acquisition, Google (2020),
35 reducing operation time. The satellite-derived information can be compared with existing numerical models and *in situ* measurement stations, obtaining a quantitative comparison that is able to feed into life cycle, operations, and cost of energy analyses.

This paper aims to take satellite data usage in offshore renewable energy (ORE) to the next
40 level by better linking satellite data, models driven by such data, decisions driven by the model outputs, and quantifying this impact on Levelized Cost of Energy (LCOE). By mapping linkages between key decision horizons in ORE life cycle to satellite capability, this paper presents a map of where satellite data can best impact ORE project decisions in i) addressing current challenges, ii) assessing resources and planning maintenance, iii) assessing the environmental impact of offshore
45 renewables. This map will direct the data analysis activities towards the project decisions having the best potential for improvement and quantify any reductions in uncertainty. These improvements can be captured and monetised in a range of cost models.

The paper contains three sections: the first one presents the ORE sector, describing the offshore
50 wind, tidal and wave sub-sectors. A brief introduction to the history of these fields is provided, followed by current techniques for resource assessment and site characterisation, main technologies and commercial projects, and finally by presenting the challenges of the sector. The second section of the paper covers the satellite observations sector. An overview on available technologies and their use is given, followed by some insight on satellite data processing and integration. The section
55 ends with a summary of the past, present and future of satellite missions and their applicability to metocean observations. The last section of the paper presents the ORE and satellite data synergies, focusing on offshore wind, tidal and wave forecasting, as well as other key parameters that can be improved by the use of satellite data, such as environmental monitoring, physical processes in the marine environment, fisheries, mammals and birds, and habitats. The section ends with a note on

60 uncertainty quantification in the use of satellite data.

2. The offshore renewable energy industries

The current section introduces wind, tidal and wave energy, before discussing key innovation points and opportunities for which satellite data might add significant value. Within these discussions, it will become clear that commonalities exist across different ORE sectors regarding the decisions being made and the applications for which additional data is required. At a high level, the ORE sector has been found to broadly require improved information in two contexts: *the characterisation of operational and environmental conditions for an offshore site* and *provision of data to drive/enhance operational decision making*. Each category can be broken down further into a general framework within which key decisions across ORE technologies fit. These more detailed breakdowns are shown in Figures 1 and 2.

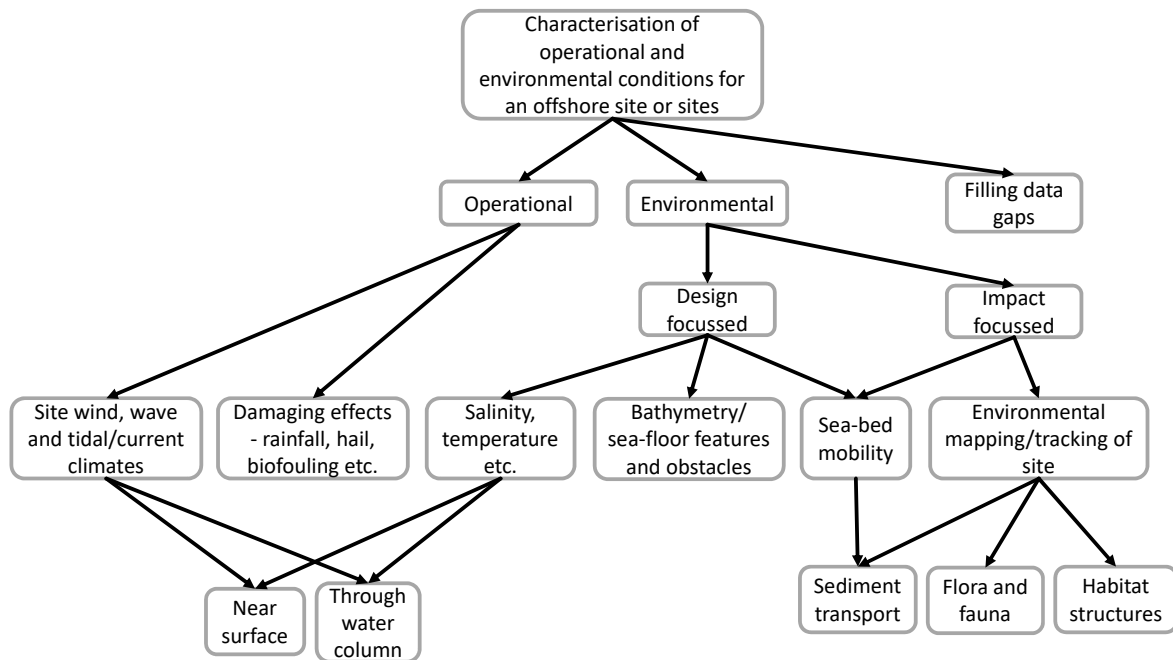


Figure 1: Graphical summary of key knowledge/decision points for offshore renewables regarding the characterisation of operational and environmental conditions across an offshore site.

70

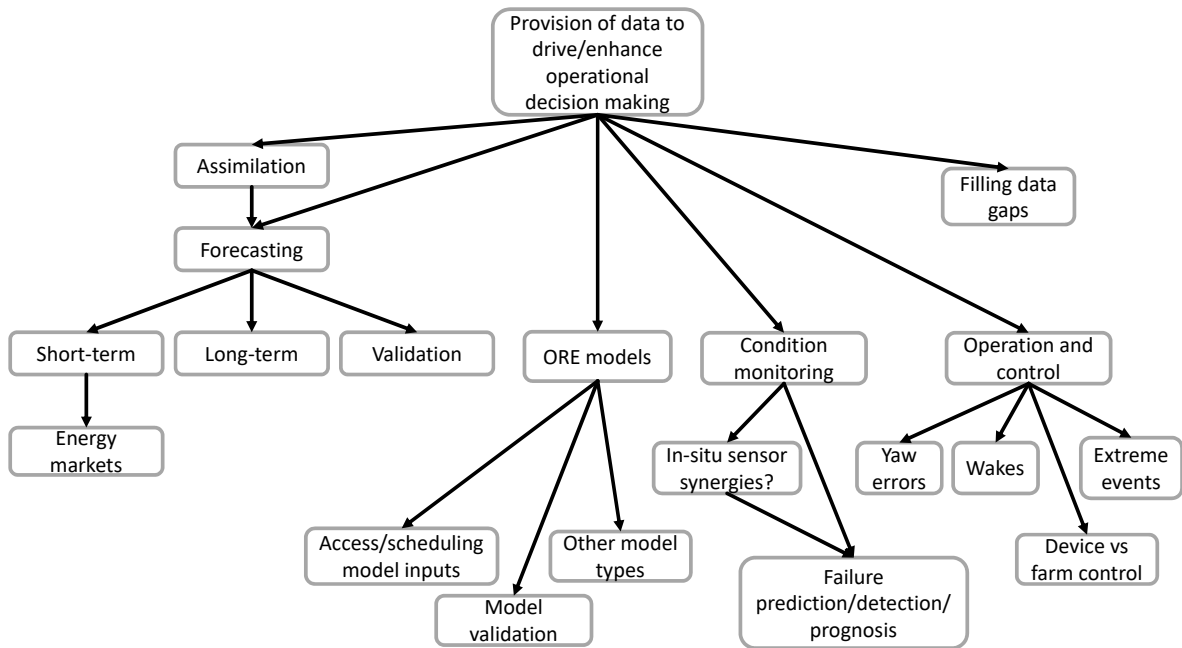


Figure 2: Graphical summary of key knowledge/decision points for offshore renewables regarding the operational phase of an offshore site.

2.1. Offshore wind energy

2.1.1. Brief history of offshore wind energy

The worlds first offshore wind farm was built in Vindeby in Denmark in 1991 Power Technology (2020). Commercial offshore wind began to gain some momentum in the early 2000s as a reaction to volatile fossil fuel prices and climate change, with the UK commissioning a 4MW test site at North Hoyle in 2000 OREC (2020). This was followed in 2002 by the first large scale (>100MW) offshore wind farm at Horns Rev in Denmark. Since then, offshore wind capacity has steadily increased worldwide to around 30GW today. Offshore wind energy is critical in meeting the climate aims set by 2050, although their realisation will require a more than ten-fold increase in offshore wind power International Renewable Energy Agency (2019) compared to currently installed capacity. As such, significant innovations and costs reductions which are sustainable in the long term are required throughout the life-cycle of offshore wind farms UK Govt. (2019). The following sections highlight the context for offshore wind decisions across the lifetime of a wind farm and indicate those areas where valuable contributions can still be made.

85 *2.1.2. Site selection*

The resource available at a site is a key parameter in determining the profitability of a resulting wind farm. In addition, site conditions will correlate strongly to asset lifetimes, for example high levels of turbulence are associated with early fatigue related failures. As such, more detailed information *a priori* about a given site allows for more accurate yield and fatigue damage assessments to take place early in the project lifecycle. It is currently standard to assess wind conditions at a regional level, and once a site has been chosen at that fidelity an *in-situ* campaign is undertaken at the site itself Sempreviva et al. (2008). While the regional level analysis does often include satellite data of some form, a clear innovation which would add value to offshore wind site selection processes would be the possibility to survey much larger sections of ocean with increased detail and accuracy to better identify promising sites. Furthermore, site selection is now beginning to be considered within wider contexts which rely on availability of a range of data types Vagiona and Kamilakis (2018), Cradden et al. (2016) and GIS software analyses, and so again there is significant room for value to be added within these more comprehensive procedures and demanding data requirements.

100 *2.1.3. Wind farm design*

The design of a wind farm is a broad and complex task which ideally considers each stage of the plant lifecycle, including: technology selection Arrambidea et al. (2019), layout and cabling optimisation Hou et al. (2019) as well as operational and end-of-life practicalities. It should be highlighted that this is a key stage from an overall costs viewpoint, since, decisions taken at the design stage effectively lock-in certain cost outgoings for the full 25+ years lifetime of the wind farm. Decisions at this stage are very much driven by past, current and future site conditions and physical properties in terms of resource, additional environmental factors such as wave and current loading, sub-sea features and sediment type. Within the decisions to be made, substructure selection is a point where the project developer has strong influence since this choice is not controlled by the original equipment manufacturer (OEM). This decision in particular is heavily influenced by environmental and geological site conditions Muskulus and Schafhirt (2015). Uncertainties regarding site conditions currently lead to large safety factors being applied which inevitably add

costs onto projects, better information which allows for these margins to be safely slimmed down would have important cost saving implications.

115 2.1.4. *Construction and installation*

Offshore wind farm construction and installation requires expensive heavy lifting vessels to be utilised, with specialist equipment for foundation construction or piling also required. The use of such vessels is a significant costs to any project. They must be booked in advance and hence unused operational days are still charged at the normal rates. As such, careful planning and confidence in
120 available weather access windows are crucial at this stage. In addition, vessels routes both to and within the wind farm, *i.e.* the order of construction, must be optimised in order to avoid wasted fuel and additional costs Barlow et al. (2015), Lacal-Arántegua et al. (2018). Crew safety is also of paramount importance during these phases.

2.1.5. *Operations and maintenance*

125 The operations and maintenance phase of an offshore wind farm life-cycle is best understood as consisting of three distinct periods, these being: in-warranty operation, post-warranty operation and late-life operation. In-warranty operation last for the first 3-5 years once a site begins energy production. Within this phase the owner has limited control over how the site is run, depending on how contracts are arranged, and weather associated risks can in some cases be outsourced to
130 the OEM. The agreements secured in these maintenance contracts have important implications for site yield Hawker and McMillan (2015) in the early years. Post-warranty, site operators can choose to sign a new long term contract with the OEM, appoint a third party or bring these operations in-house. A mixture of the above can also be used. At this stage it is crucial for the site owner to understand the weather risks associated with operations, reliability and access. Key decisions
135 centre around the planning and scheduling of maintenance and repair operations throughout the wind farm, while accounting for, and managing the risks associated with, weather and site conditions, as well as the stochastic nature of failures Seyr and Muskulus (2019b), Shafiee et al. (2015). Understanding and monitoring Key Performance Indicators (KPIs) is also important at this stage Gonzalez et al. (2017). It could be argued that site conditions and weather risks for a given site

140 should be well known after 5 years of data collection and analysis, however, with the increasing scale of offshore wind farms (hundreds of wind turbines covering hundreds of square kilometres of ocean) and often only a handful of on-site met-ocean sensors, detailed site data with a high resolution of spatial coverage is not yet a reality.

145 Late-life operations, including any periods of life extension, sees another shift in context for operational decision making. At this stage of the project, assets will be wearing out and failing with greater frequency, and thus, inspections and repairs will be required at shorter intervals. Furthermore, since Contracts for Difference (CfD) agreements generally have a life of 15 years, the site income may well have changed from those under which it was designed. CfDs are contracts
150 that guarantee a payment for any differences between a “floor price” (below which the market price of electricity cannot fall without a compensation made) and the actual cost of electricity to the provider. The end stage of the CfD agreement will therefore be driven strongly by the price floor. For a detailed overview of the key considerations and influencing factors for O&M decisions and planning see Seyr and Muskulus (2019a).

155 *2.1.6. Decommissioning and life extension*

The decisions made towards the end of the life of an offshore wind farm overlap strongly with those made during the design phase, since, it is now necessary to reconcile assets’ operational histories with what was assumed during planning and design. Decommissioning costs themselves are also somewhat uncertain and so reductions in uncertainty around this are important for optimal
160 decision making Topham and McMillan (2016), Topham et al. (2019). Life extension of a wind farm consists of assessing whether the assets can be safely and profitably operated beyond the end of their design lives, a question which would be greatly assisted by improved site condition information across the wind farm lifetime. These decisions have been fairly extensively studied in the context of onshore wind Ziegler et al. (2018), with offshore now also being considered Bouty
165 et al. (2017), albeit at an earlier stage of understanding and experience.

2.1.7. Future challenges for the offshore wind sector

Innovation points and the possible provision of information which would have significant impacts to the offshore wind industry all centre around the provision of more data, and with improved spatial resolutions in particular, over what is currently available regarding site met-ocean and environmental conditions. In addition, the enhancement and increased redundancy of offshore wind site communications provisions, for the purposes of providing ancillary services and ensuring security of supply/blackout prevention (with respect to a future grid with much higher proportions of renewables penetration), would also have a significant impact in this sector. As highlighted in research papers such as Badger et al. (2012), Badger et al. (01 Apr. 2016) and Wang et al. (2018), retrieving wind speed at hub height of wind turbines is an ongoing challenge for the sector that needs to be addressed.

2.2. Tidal energy

2.2.1. Brief history of tidal energy

The use of tidal energy dates back to as early as 10AD with the first recorded tidal mill on the Persian Gulf, Charlier and Finkl (2009). Early engineering applications exploited both tidal stream and tidal range energy to turn water wheels for milling grain. Investigation into the generation of electricity at a large scale began in the 1920s, with the world's first tidal barrage power station operating at La Rance *Tidal range energy resource and optimization – Past perspectives and future challenges* (2018), Khare et al. (2019), France, from 1966. The La Rance barrage remains operational, generating power through an installed capacity of 240MW. Interest on the generation of electricity from tidal stream began in the 1980's when research into the design of tidal hydrokinetic energy converters Bahaj and Myers (2003), Laws and Epps (2016), Borthwick (2016) started to become mainstream. A variety of different rotor designs have been trialled, but the sector has converged toward the horizontal axis tidal turbine (HATT), Bahaj and Myers (2003), for the majority of applications, following the design technology developed for the wind sector. Nonetheless, several design concepts have been proposed, Zhou et al. (2017), including tidal kite variants designed for lower velocity tidal sites, Andersson et al. (2018), and omni-directional vertical-axis designs, Ouro et al. (2019), that would fit in more spatially constrained sites. To

date power generation from tidal stream has not reached the level of tidal range systems in energy
195 output terms.

2.2.2. Tidal resource assessment and site characterisation

The site information required by a tidal developer depends on the method of energy extraction being developed, i.e. tidal range or tidal stream. Tidal range systems take advantage of local resonance effects that amplify the available potential energy over a tidal cycle. The highest tidal
200 range has been observed in the Bay of Fundy, Canada. In the UK, equivalent conditions emerge within the Severn Estuary, known for hosting one of the highest tidal ranges in the world. As a result both of the above have been the focus of many tidal range energy proposals.

Tidal stream systems take advantage of localised flow acceleration resulting from flow con-
205 striction (channels and straits) or flow curvature (headland effects). For all forms of tidal power generation, resource assessment is typically a combination of measurement and numerical modelling; this is the approach recommended in the IEC (International Electrotechnical Commission) technical specification, Commission (2015), for tidal energy resource assessment and characterisation.

210 The estimation of the global resource has been the subject of recent studies (e.g Neill et al. (2018)) that employ tidal elevations drawn from available global tidal models to quantify the head differences over every tidal cycle. While global ocean models can be a useful indicator to provide a coherent insight to the distribution of potential energy, these models typically lack resolution
215 in the coastal zone and exclude critical processes such as intertidal effects. Therefore, global approaches may not capture localised coastal details that can be vital to reproduce the resonance effects accurately. In refining the resource estimates for individual assessments, regional coastal ocean models are sequentially applied to quantify with more confidence the regional conditions Angeloudis and Falconer (2017).

220 Site characterisation is achieved through a combination of *in situ* measurements and regional fluid modelling. *In situ* measurements are provided from a variety of instruments, the most common

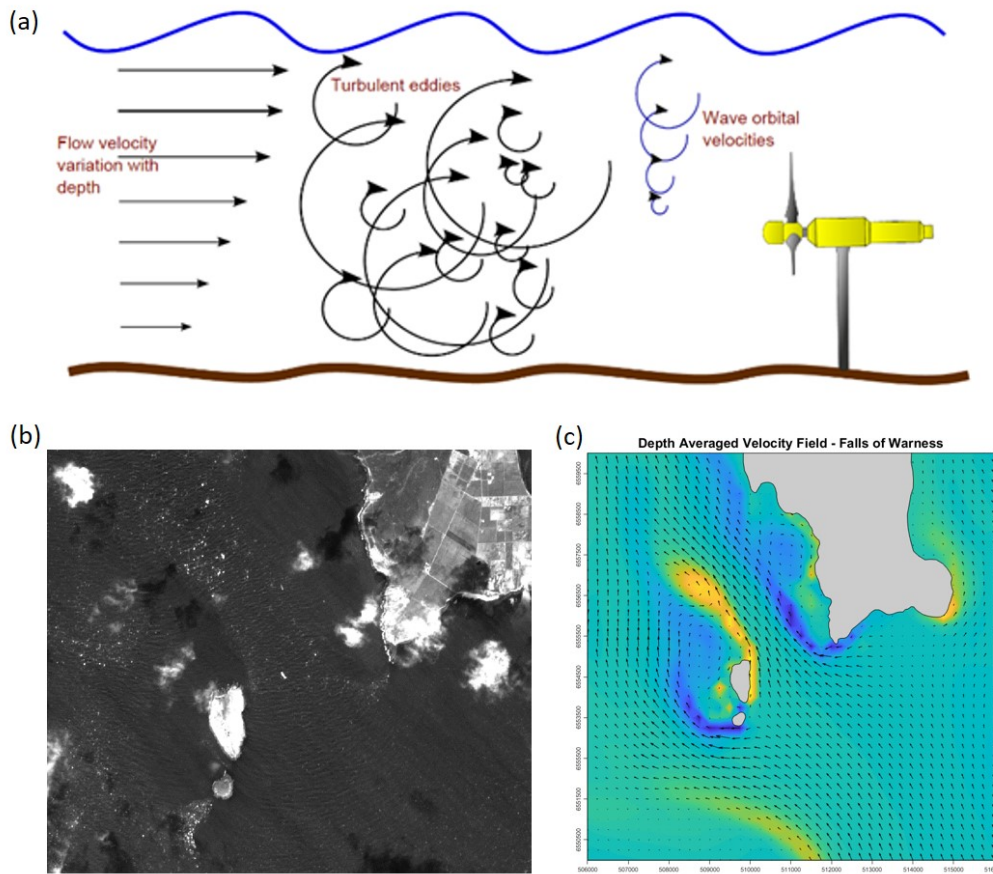


Figure 3: Site characterisation for tidal stream energy extractions needs to capture the full range of complex flow conditions. The IEC/TS62600201_2015 *in situ* data specifications target the capture of the vertical variation in flow conditions. Panel (a) shows the different components responsible for this vertical variation. Panel (b) shows spatial variations due to flow separation processes observed from satellite imagery (Sentinel-2A band B3 data from 21/04/2017). Panel (c) presents an example of regional-scale modelling, which is required to extend the information at present. The lower panels show a region of the tidal energy test site at the European Marine Energy Centre (EMEC), Fall of Warness, Orkney, UK.

being the Acoustic Doppler Profiler (ADP). An ADP consists of multiple acoustic transducers pointing in different off-axis directions, but in a geometric pattern that allows the reconstruction of the 3-D velocities along the instrument axis. They measure the fluid velocity through the
 225 back-scattered Doppler shift in the frequency of a transmitted acoustic pulse. Details of these instruments and their operation can be found in Thomson and Emery (2014), Joseph (2013). ADPs can be deployed in fixed seabed moorings, mid-water or surface floating moorings, or from a moving vessel. In high-flow regions of interest to tidal developers, only the seabed mounted

and vessel mounted measurements are made, due to the harsh environmental conditions. Seabed
230 moored instruments provide a time series of vertical profiles of the 3-D velocity at a single point.
These give high temporal data, but only the vertical flow structure at the mooring location. Vessel
mounted ADP's can be used to survey a series of transects over multiple tidal cycles, providing
good spatial coverage at the expense of temporal resolution. To capture the full spatio-temporal
variability in the flow field, 3-D regional tidal models are required.

235 Advanced measurement methodologies are being developed to collect site data from operating
turbines Draycott et al. (2019). These techniques provide opportunities to directly assess the im-
pact of a turbine on the local flow and to complement standard measurements that have to be
made up-stream and down-stream of a turbine to minimise instrument deployment and recovery
risks. These data allow the quantification and assessment of theoretical parameters used to define
240 the IEC technical specifications for data capture. Local velocity field “gusts” and their impact on
turbine behaviour can be directly measured at rotor plane depths through the use of horizontally
mounted ADPs, Sellar et al. (2018). Bespoke acoustic instruments are being designed and tested
that will provide more accurate measures of the hub-height flow structures, than the standard
off-the-shelf instruments can currently achieve. The integration of such instruments on turbines
245 may also provide a means for potential responsive control of turbines to optimise their operation
and minimise fatigue.

2.2.3. Main tidal technologies

Tidal range power plants behave effectively like dams, constructed in areas exhibiting sufficient
250 tidal range to economically house turbines for power generation. Their operation is based on the
creation of an artificial tidal phase difference, by enclosing water over a surface area A . This fa-
cilitates a head difference H that is then allowed to drive flow through turbines, tapping into the
potential energy. Tidal range power generation is a low-head hydropower application where bulb
turbines are currently the default turbine technology proposed and installed, Waters and Aggidis
255 (2016a). Over the years, bulb turbine capabilities have been continually evolved in terms of their
efficiency Waters and Aggidis (2016b), but also in terms of their sustainability. In terms of the

overall tidal power plants, while the constituent elements between designs remain the same (i.e. *Turbines, Sluice gates, Embankments*), the configuration may vary to deliver considerably different generation profiles.

260

Tidal range power plants can be attached to the coast (such as a barrage or a coastal lagoon) or located entirely offshore (as offshore lagoons). ‘Barrage’ and ‘lagoon’ are terms used as per the impoundment perimeter characteristics. If most of the perimeter is artificial, then the term lagoon is appropriate, whilst barrage is suitable otherwise. In the case of lagoons, the additional cost
265 for longer embankments typically enables smaller developments, that may be more feasible than barrages. The latter typically span the whole width of an estuary, and are thus associated with severe hydro-environmental impacts that are challenging to quantify.

Tidal stream energy extraction is still an emerging technology, that has accelerated in recent
270 years due to the need to reduce carbon emissions to mitigate the impacts of energy generation on climate change. The principles of tidal stream energy extraction are very similar to those for wind: a rotor system is coupled to an energy converter that generates electricity which is supplied to a power grid. The majority of marine tidal turbines being developed are horizontal axis systems. There is a large amount of on-going research investigating how to provide more
275 appropriate information to both designers and site developers to help improve turbine performance, reliability, and maintenance.

The development of tidal energy sites is both a difficult and costly exercise, as these sites inherently have very strong and highly turbulent flows. Marine operations are limited to narrow windows around times of slack water (*i.e.* there are four operating windows each day at times
280 of high and low water). The operating windows are further reduced by weather and waves (both locally wind generated and open-ocean storm generated swell). For these reasons, tidal energy extraction systems are costly to install, maintain, and operate. To be economic they must be scalable. To achieve the necessary level of scalability high quality site information is required, including extreme event statistics. Both short-range and long-range forecasting is required to help

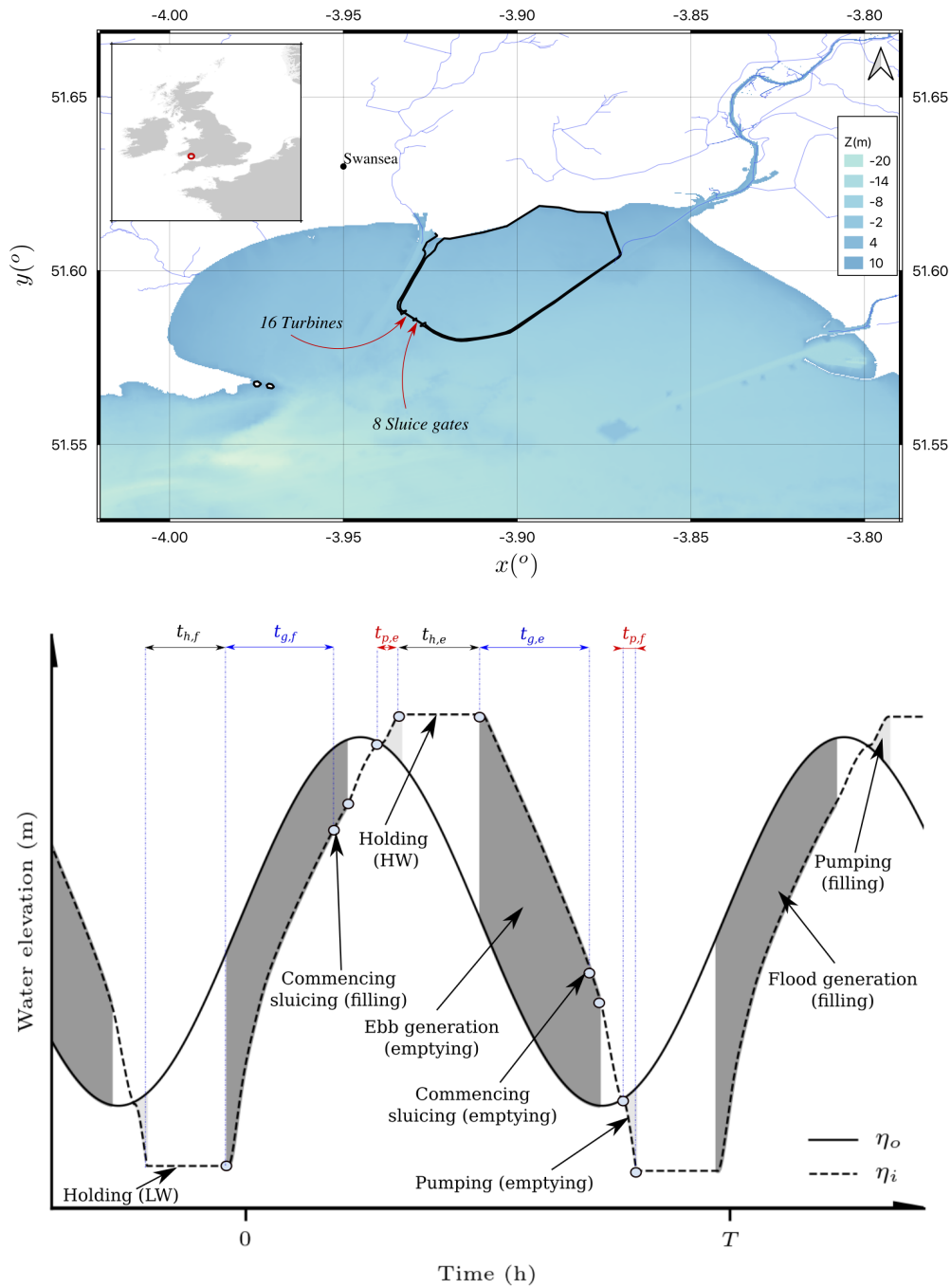


Figure 4: General arrangement and operation of tidal range power plants. Top: the Swansea Bay Tidal Lagoon outline of Tidal Lagoon Power Ltd, an example of a single-basin tidal range structure. Bottom: Operation of a tidal range power plant including control parameters that can be used to optimise a tidal range structure operation Harcourt et al. (2019).

285 minimise operational and maintenance costs.

2.2.4. *Tidal projects*

The majority of large scale operational projects are of the tidal range type. Up to July 2020, the largest tidal energy producer is the Sihwa Lake Tidal Power Station in South Korea, with a 254MW capacity Bae et al. (2010). This is followed by the La Rance Tidal Power Plant, France (240MW) *OES Annual Report - 2019* (2019), Waters and Aggidis (2016b). Smaller tidal range schemes exist in Canada (e.g. the 20 MW Annapolis Royal tidal power station), Russia and China. Moreover, there is interest in developing schemes at multiple sites where the resource allows it Neill et al. (2018), or as solutions supporting electrification in remote/isolated areas Mejia-Olivares et al. (2020), Delgado-Torres et al. (2020). Scotland is at the forefront of the developments in terms of tidal stream projects. SIMEC Atlantis and the Meygen array are devising 4.5 MW of tidal stream energy in the Pentland Firth, SIMEC Atlantis (2020). Nova Innovation is developing a tidal array in Shetland, with a capacity of 300 kW, Nova Innovation (2020). Orbital Marine Power has developed and tested a 2MW turbine at the European Marine Energy Centre (EMEC) in Orkney, Orbital Marine (2020).

300 2.2.5. *Challenges facing tidal sector*

The main challenges facing tidal stream development are related to turbine reliability, reduction of cost through optimal design, optimal planning of operations and maintenance activities. Reliability can be improved through an improved understanding of the fluid dynamics, in particular quantification of the large-scale structures, wave-current interactions and their effect on turbine behaviour, and predictive control of the turbine to minimise impacts of high-frequency events. The design of turbine rotors has a relevant impact on the operation and reliability of tidal turbines. Blade design is informed through Computational Fluid Dynamics (CFD) modelling. The CFD model needs to provide true representations of the full fluid environment (i.e. currents, small- and large-scale turbulence, and waves) to capture the full spectrum of the physical loads. Operations and maintenance is costly in the marine environment, particularly for sea bed-mounted turbines.

To date, site characterisation has been predominantly carried out using *in situ* measurements and numerical models, but satellite data provide regional scale data that can be used to both characterise a site and validate numerical models. In particular, optical and SAR imagery can be used to quantify the large-scale eddy fields generated by flow separation processes. These data potentially provide another independent measure that can be used to validate numerical simulations, and provide a first pass indication of regions within a site that may be problematic both for *in situ* data collection for site characterisation and for subsequent positioning of tidal turbines. Optical imagery generally provides high spatial resolution (<10m), but the information content is limited by the amount of cloud in a given image. This significantly reduces the number of useful images available for a given location from a time series. SAR imagery is not restricted by the presence of cloud and the spatial resolution is improving with each generation of instrument. With an appropriately configured SAR system, it has been shown that surface currents can be measured from space Joseph (2013), Romeiser et al. (2014), Suchandt and Runge (2015). These techniques need development to allow full 2D surface-velocity fields to be derived, but has the potential to provide maps of surface flow data. Altimeter data are used to validate tidal models, but currently these data do not provide sufficient spatial resolution or accuracy in straits and channels typically targeted for tidal stream energy extraction. The more general limitation of satellite data is the frequency of over-passes at any given site, which is generally twice daily or less, but there is the potential to build a statistical picture of temporal variability from long-time series of satellite data.

2.2.6. Future challenges for the tidal energy sector

For tidal range energy, there are a number of schemes that are under consideration over the next 5-10 years, and many more sites have been identified around the globe where schemes can be developed. The main barrier to the development of these types of systems is generally related to environmental impacts as well as making a robust case for the initial capital investment, Hendry (2016). For the latter, satellite data can play a role in more adequately addressing uncertainties associated with the environmental impact and also informing future studies about regional and far-field effects of tidal range schemes. For tidal stream, increased commercial investment is required, most of the current focus is on small scale projects that service islands or integrate with a range

340 of renewable energy sources. Reliability is a key factor identified as introducing high-risk to investors, so significant development is needed to accelerate methods for improving reliability. This depends on design improvement, materials, turbine siting, resource characterisation, predictive control (impact of waves, storms, etc), and O&M optimisation.

2.3. Wave energy

345 2.3.1. A brief introduction to wave energy

Over many years, significant research, development and innovation has been carried out across the world looking at wave energy technologies. The first recorded attempt at devising a concept to harness wave energy goes back to 1799 when two French engineers patented a system involving a float and a lever (Ross, 1995). There is however, no knowledge of the outcome of this invention.

350 The next notable use of wave energy was in the 1950s to power navigation buoys around the coast of Japan. These buoys were produced on a relatively large scale (about 300 were deployed) but the amount of energy each buoy produced was relatively small (just enough to power a 60W navigation light). Modern research and development in wave energy as a means of producing utility scale electricity was motivated by the oil crisis of the early 1970s. New government programmes,

355 particularly in the UK, encouraged research, including pioneering work of Prof. Stephen Salter and his team at the University of Edinburgh (Salter, 1974). Since then, over 85 wave energy converter (WEC) concepts have been tested at large-scale and under representative environmental conditions Babarit (2017), but so far, no long lasting commercial breakthrough has been achieved. Through changing programmes at different levels of government, support for technology development was

360 intermittent and progress slow Hannon et al. (2017). At the same time, other forms of renewable energy have been progressing quickly, taking some focus off the developments required to push wave energy technology forward. As a results, some technology developers are now focusing on niche markets such as powering remote island communities, oceanographic instruments and isolated offshore oil and gas equipment, where traditional power generation approaches are costly

365 and/or difficult to implement technically LiVecchi et al. (2019).

Over the course of wave energy development, a wide variety of methods have been explored in

an effort to extract the energy from waves. Each of these methods has tried to exploit different features of the wave energy resource. Some methods rely on the rise and fall of a wave moving
370 a floating device, others rely on the change in pressure above a submerged device, while another method extracts energy from the surging motion of waves before they break close to shore. The Aquaret project *Aquaret* (2020) gives descriptions and graphics describing the most common types of WECs, each one designed around different features of the wave resource. Details relating to the performance of device types in different sites using a variety of evaluation metrics can be found in
375 Babarit et al. (2012).

A key performance indicator to assess the future potential of a WEC technology is the long term LCOE. Three key elements of this calculation are: the initial capital cost of the wave energy device/array, the operations and maintenance costs, and the revenue generated from output. Each
380 of these elements are influenced at different stages of the project development lifecycle. The capital expenses can be considered to be loosely related to the historical site conditions, and the structural design of the WEC. Operations and maintenance (O&M) costs can be minimised through design and planning but will be influenced by the site conditions at the time the O&M operations are required. Indeed downtime for maintenance can be planned during periods when
385 lost revenue would be minimised either based on analysis of historical data or forecasts of future conditions. Prediction of future revenue will be based on calculations of historical wave resource information and knowledge of device performance, but can be broken-down to seasonal revenue based on resource variations. Accurate assessment of the LCOE throughout the development stages of a WEC concept is key to assess its commercial viability and inform design decisions. However,
390 forecasting O&M costs for calculating wave energy LCOE is a complex task, needing in many cases real sea data as models fall short in many cases. This topic has been the source of different European projects, as presented in Bloise Thomaz et al. (2019).

2.3.2. Wave energy converter site characterisation

The features of a site which are of interest to the developer of a WEC include, but are not limited to, seabed bathymetry and ground conditions, tides and currents, wave resource (wave heights,
395

wave periods and wavelengths, range of wave directions and spectral information), marine life and wind conditions. Other characteristics of the site which may be of interest depending on the type of WEC are water depth changes based on tidal range or variation between regular conditions and storm conditions. There are a range of instruments and methods available to determine some
400 of these features which include *in situ* measurement, numerical models and human observations. Each of these has their own advantages and disadvantages which include cost and accuracy, so the best compromise is often used for practical reasons. When technology starts to reach a higher level of maturity, testing a prototype at sea is then required. The process to determine an appropriate open water site for a scaled device is not straightforward and detailed analysis of both the com-
405 mercial deployment site and the scale test site is required Mclean et al. (2019).

Improving the accuracy of available data for the site, including the wave resource, is imperative to optimise the design of the technology and the commercial array in which it is to be used. Regardless of the feature of the wave resource being exploited by the WEC, accurate representation
410 of that resource is required. Seasonal and annual variations at a site can be significant Perignon (2017), Mclean et al. (2019) so extensive knowledge of a deployment site is important at a number of stages throughout the development of a WEC and a commercial project. During design phases it is important to understand the wave conditions and how this will impact on the device motions and loads within individual components. The IEC recommends in its technical specification on
415 wave energy resource and characterization, International Electrotechnical Commission (2015), fully spectral and directional description of the sea state for WEC design, as well as understanding of the extreme conditions at site, in order to determine design load cases International Electrotechnical Commission (2019). This detailed level of resource description can be achieved by *in situ* physical measurements or by hindcast numerical modelling. *In situ* measurements can be obtained
420 from a range of instruments. The most common ones are listed below with a short explanation. A comprehensive list with more details on their working principle can be found in (Tucker and Pitt, 2001, chapters 3-4) and (Pecher and Kofoed, 2017, chapters 3).

Surface-following buoys are equipped with accelerometers and/or GPS sensors from which wave
425 elevation time series and spectral measurements can be inferred. These instruments are typically
expensive (although new GPS buoys are becoming more affordable Raghukumar et al. (2019)).
They are well suited for deep water sites and have a well-established track record (less so for the
GPS based ones which are more recent). Their main measuring limitation appear in the presence of
currents and steep waves, as these buoys do not accurately follow the water surface. These surface-
430 following buoys are available, off-the-shelf from several commercial suppliers. Some models provide
directional wave measurements whereas simpler ones measure only omnidirectional wave elevation.
Regular removal of marine growth may be required to ensure measurement accuracy is not impacted
by the change in weight or drag of the buoy. ADCPs are instruments that can be deployed on the
seabed and which rely on transducers emitting acoustic pulses which are reflected by the water
435 surface and by particles in suspension in water. The former phenomenon allows surface tracking
while the latter allows measurements of particle velocity throughout the water column using the
Doppler effect Work (2008). As their name implies, these instruments were originally designed to
measure current but omnidirectional wave elevation can be measured from surface tracking while
directional wave measurements can be inferred from water particle motions. These instruments
440 tend to be expensive and suited for shallow water wave measurements. Pressure transducers are
also deployed on the seabed. The pressure measurements they provide is used to infer the water
level variations due to tide but also to waves. They tend to be less expensive but the quality of
the wave measurements obtained is affected by the wave induced pressure decay with water depth
which make them only suitable for shallow water sites. They only provide omnidirectional wave
445 measurements unless they are deployed in arrays Howell (1998).

Numerical modelling of wave energy resource is typically achieved using third-generation spec-
tral models such as SWAN, WaveWatch or MFWAM (Meteo France WAve Model). These solve
the wave action balance equation Hasselmann et al. (1988) on a grid which discretise the ocean
450 domain of interest. More information about this is provided in section 4.3. Physically, this balance
equation can loosely be assimilated to the energy balance of waves, where the wind blowing over the

ocean surface is the main energy source and white capping, wave breaking and bottom friction are the main energy sinks. Moreover, the model takes into account non-linear energy transfer between different wave frequencies. The way some of these phenomena are modelled is semi-empirical and the model therefore requires calibration and validation against in situ measurements. An example of this process is illustrated by Boudière et al. (2013). It is not always possible to have location overlap between *in situ* measurements, accurate spectral model data and desired WEC deployment sites, however it may be possible to use one buoy to calibrate a wave model at one precise location, then expand the area of acceptable accuracy based on satellite data. Figure 5 shows a representation of the frequency and directional spectrum obtained from the public domain wave climate hindcast Homere database (Accensi and Maisondieu, 2015) produced by IFREMER.

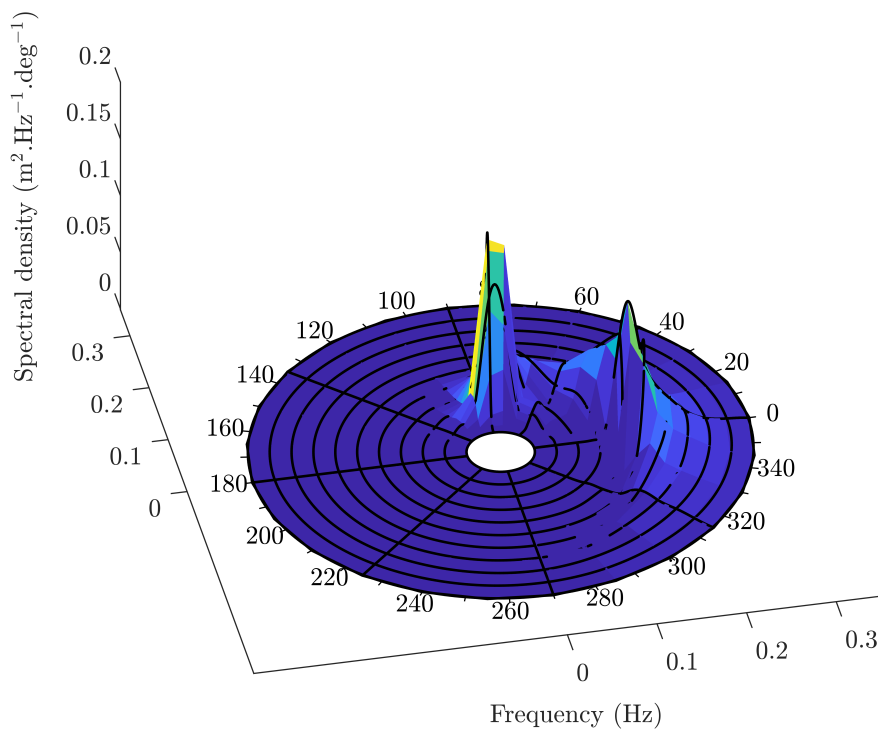


Figure 5: Frequency and directional spectrum at 47.239° North; 2.786° West (off the coast near Nantes, France).

2.3.3. Wave climate forecasting

To optimise a WEC and an array, real time knowledge of the incoming wave can be used as an input to a control system to update system settings, Li et al. (2012). The optimisation may be

465 designed for maximising power output, smoothing output across the array or intended to reduce wear on components.

Short term forecasting can also be used to estimate the output of the array, providing more accurate information to grid operators and analysts looking to balance the national grid. Balancing
470 the grid is an issue for all electricity generators and research is ongoing, Barlow et al. (2015), Drew et al. (2017), Cannon et al. (2017), looking at the issues and solutions available to the sector to prevent curtailment, blackouts or large energy price fluctuations due to intermittent generation. It is proposed that predictable electricity generation may have a higher value than intermittent generation due to ability to plan grid balancing activities rather than having to react to sudden
475 changes, Pennock et al. (2019).

Slightly longer-term forecasts can be used for planning of marine operations where wave height or wind speed will limit the opportunities for undertaking work. Some operations may only take a few hours, while others a few days, and depending on the availability of vessels, equipment
480 and personnel, they may need to be kept on stand-by, waiting for appropriate weather windows. Improved accuracy for site condition forecasts can improve the planning of marine operations, reducing the stand-by time and therefore reducing costs. This may be more important when equipment within the WEC has failed and there may be safety risks associated with such operations being delayed.

485 *2.3.4. Future challenges for the wave energy sector*

A combination of historical and current environmental data can be used to determine migration routes for marine mammals and assess if there has been a long term impact on this by the presence of a wave energy array in a particular area. It is recognised that by creating a fishing exclusion zone within the array, it may displace marine life, even encouraging them to migrate to-
490 wards the array. This, in itself is an interesting topic for which there is a lack of long term realistic data within the ocean energy sector, but possibilities of further research in the future are extensive.

Accurate site data, used for hindcast, real-time and forecasting is imperative to improve the design, optimisation, planning and long term operations of ocean energy technologies. As such, all methods for providing this data should be explored including how existing practices can be complemented and improved with satellite data. Satellite data could be a tool to help calibrate/validate hindcast wave numerical models, O’Connell et al. (2020). Indeed, although satellites would only be able to provide significant wave height and a wave length/period parameter at one particular time per day, this can be done over a wide area unlike what is available from conventional *in situ* wave measurement (surface-following buoys, acoustic Doppler profilers).

3. Satellite observations in the ocean

3.1. Satellite performance

Different sensors are used within the field of satellite oceanography research. These sensors can be classified according to their range of measurement within the electromagnetic spectrum Preissner (1978). The performances of remote sensing instruments take place between certain wavelength (or frequency) ranges of the spectrum. Thus, optical sensors operate within the visible wavelength range, 0.4 to 0.7 μm and the near infrared range between 0.7 μm and 1.1 μm . Infrared (including thermal) measure between 1.1 μm and 1 mm. Finally microwave sensors use wavelengths between 1 mm and 1 m (300GHz – 300 MHz). Atmospheric attenuation due to clouds, rain, snow, or water column varies according to the relative size of the attenuating features and the selected wavelength. Thus, optical and infrared signals are more affected by the meteorology than microwave signals which are much longer in wavelength and therefore scatter much less. Longer wavelength microwaves are typically therefore not altered by clouds, but can be disturbed by rain, especially at the shorter wavelengths used by many satellite radar systems. Sensors can be designed as multispectral, while others operate at specific wavelengths. Multispectral instruments can operate at different wave bands (referred to as “bands” as shorthand).

Another classification according to instrument performance is passive and active operation. Passive sensors are signal receivers, but do not transmit any electromagnetic pulse. These sensors

520 can measure radiance, thermal emission, and scattered energy that originates from some other
source, such as the Sun. On the other hand, active sensors illuminate the planet surface with an
electromagnetic pulse and measure the 'backscattered' signal of that pulse after it has scattered
from features on the surface (Woodhouse, 2005, chapters 1). Optical and infrared sensors are
passive instruments, while microwave sensors are divided between passive and active instruments
525 (radar).

Along with passive and active designation, sensors can also be classified as sounders or imagers.
Sounders, also known as atmospheric sounders, measure vertical distributions of atmospheric pa-
rameters, such as temperature, humidity, precipitation and chemical composition. Infrared sensors
530 are the most common atmospheric sounders, although microwave sounders are also in use. On the
other hand, imagers measure two dimensional properties in a plane parallel to the surface. Optical,
microwave, and infrared sensors can be used as imagers. Currently all the Earth Observation (EO)
active radar systems are monostatic, meaning that the receiver and transmitter are co-located
on the same instrument. In the case where receiver and transmitter are different devices, these
535 compose a bistatic system. Only the Global Navigation Satellite System Reflection (GNSS-R) and
Refraction techniques use a bistatic system.

Satellite on-board sensors can measure physical and environmental aspects of microscale (≤ 1
km) and mesoscale (2 to 1,000 km) dynamics (Robinson, 2010, chapter 3). However, the capability
540 of a sensor to measure at different scales will rely on its spatial resolution, revisit cycle, orbit, and
swath width (i.e. the area imaged on the surface as a satellite revolves around the Earth is called
swath). Examples of different radar and optical satellite images are shown in Figures 6, 7 and 8.

Instrument performance is briefly introduced here for those instruments classified as imagers
545 only. Then, passive imagers (optical, near-infrared, and radiometer instruments) are considered.
Included active imagers are altimeters, scatterometers and Synthetic Aperture Radar (SAR). Fi-
nally, GNSS-R is also explained even though, strictly speaking, GNSS-R cannot be considered an

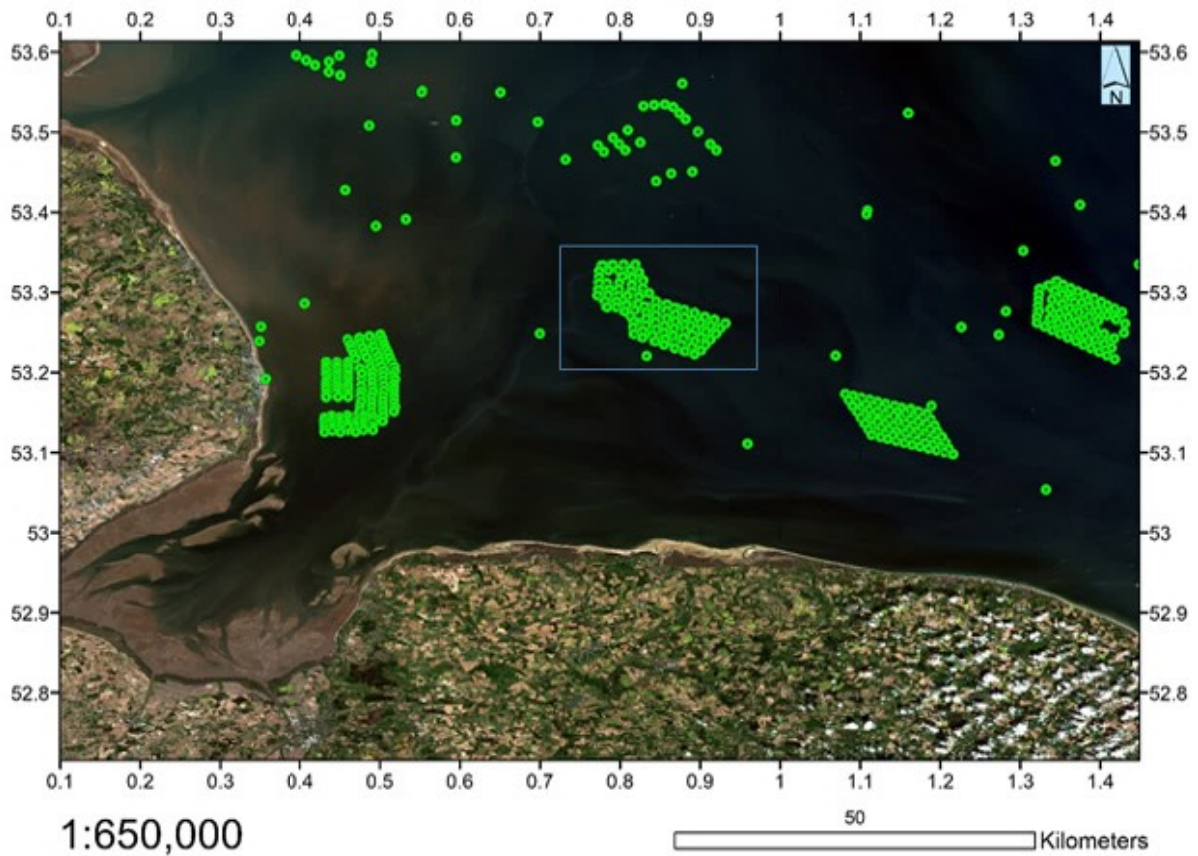


Figure 6: Synoptic view of offshore wind farms in the Humber region, southern North Sea. Four operational wind farms can be seen, with a further site under construction. The background of the image is formed from merged Sentinel-2 red, green and blue visible bands at a pixel size of 10 m. An overlay of green symbols shows reflective objects in the scene detected with Sentinel-1 SAR. Both satellite products were collected within 24 hours (6th May 2020). Image files downloaded from ESA/EU Copernicus (2020) and processed with SNAP.

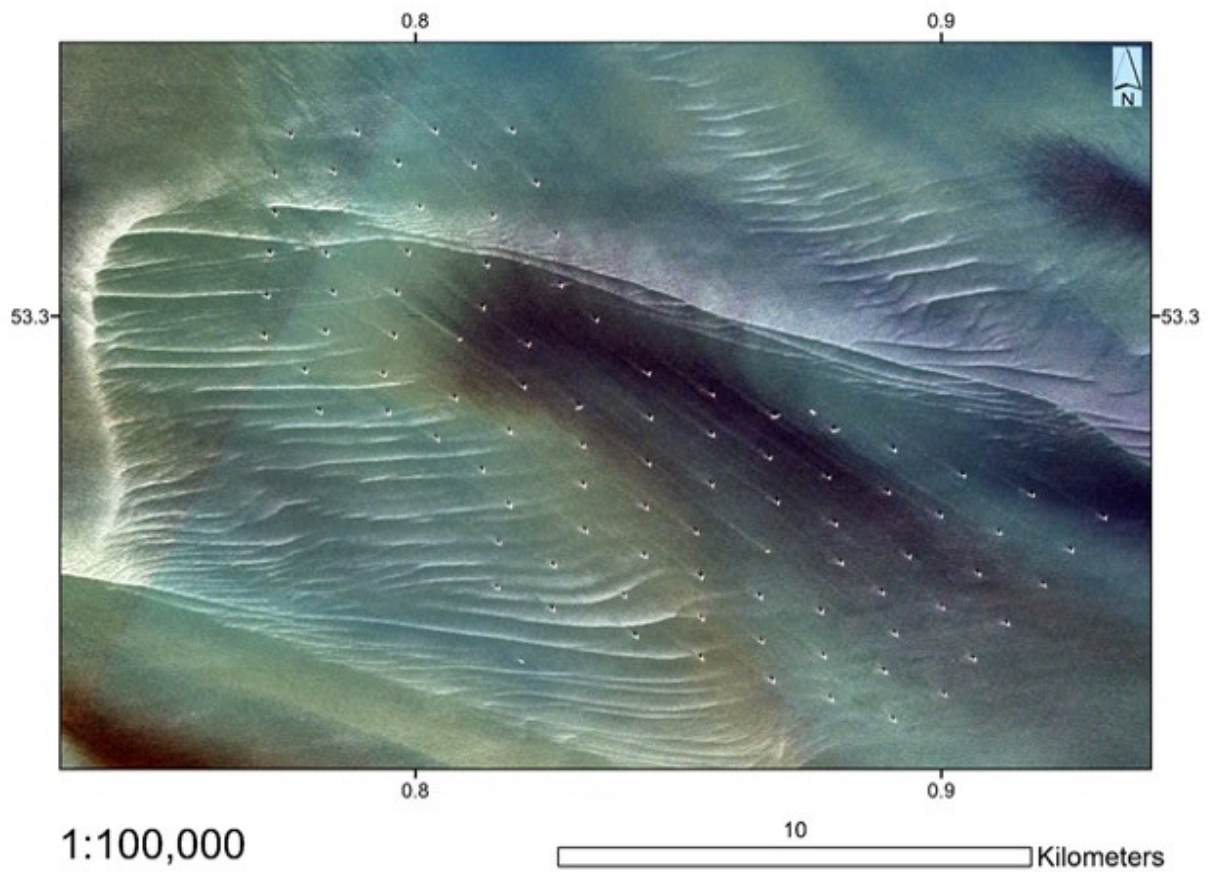


Figure 7: Medium-resolution Sentinel-2 view of 580 MW Race Bank offshore wind farm showing details of underlying seabed bathymetry during a period of calm weather and transparent water. 91 wind turbines are visible within the farm, with some in shallow water (< 15 m, lighter colour) located on rolling sand wave structures, and others in deep water (> 20 m, darker colour) where seabed details are not visible.

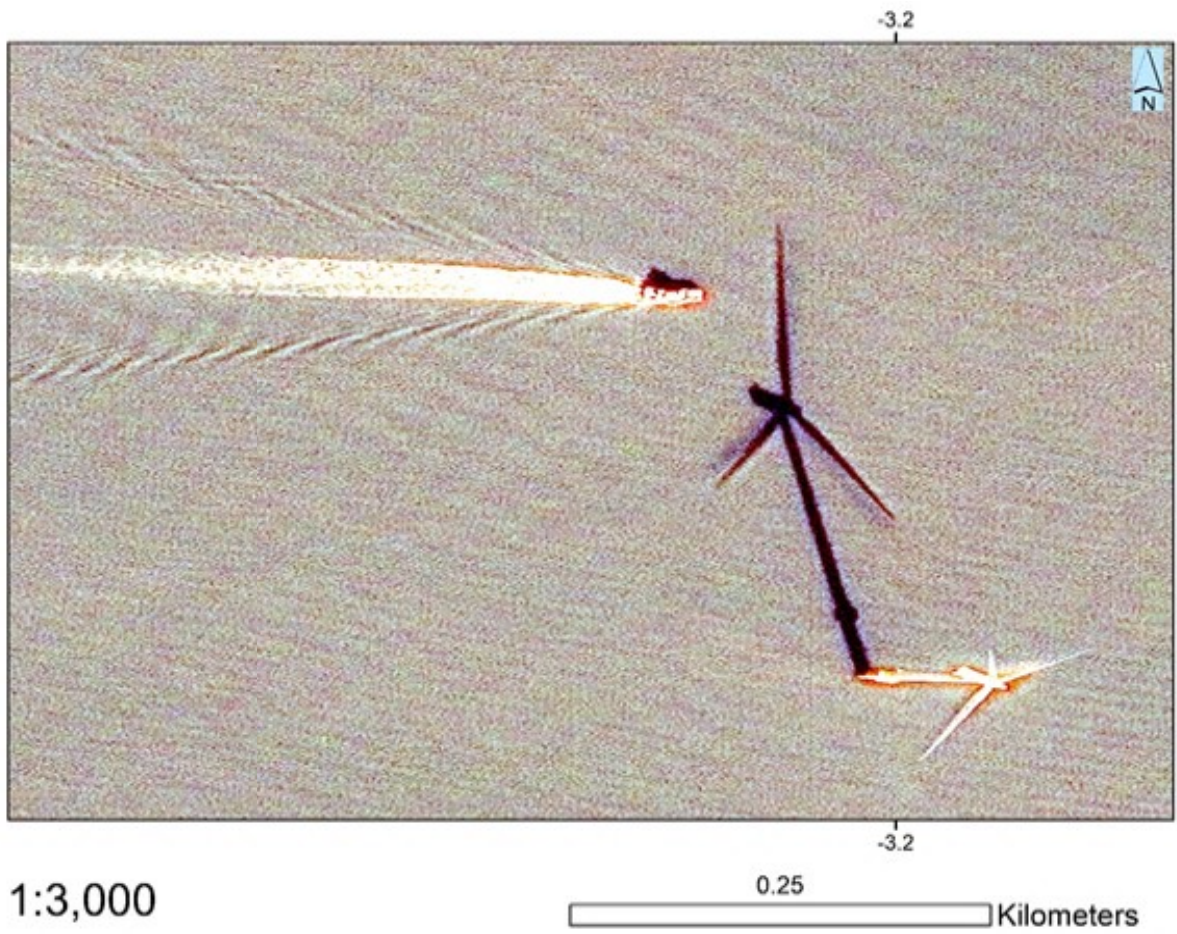


Figure 8: High-resolution Pleiades image with 0.5 m pixel size showing details of an individual wind turbine and passing crew transfer vessel.

imager. A comparison of general instrument characteristics is shown in Table 1. Values and applications in Table 1 are meant to be indicative since they represent ranges of actual characteristics
550 or applications.

All passive imagers follow a similar performance. They measure an electromagnetic signal emitted or scattered by the Earth surface, but do not illuminate the planet surface themselves. Thus, passive instruments need an external electromagnetic source which will illuminate the planet's
555 surface — this source is usually the Sun. This means some passive instruments follow a sun-synchronous orbit because they can only take measurements during daylight. The sun-synchronous orbit allows the sensor to maintain consistency of lighting conditions, since the local time below the satellite always remains the same. This is true for optical, near-infrared, multispectral, radiometers, and any other passive instrument. The difference between them is their design to work under
560 different wavelengths or frequencies of the electromagnetic spectrum. Visible and near-infrared spectrum ranges were detailed above unlike radiometers, a term more often used to describe passive microwave instruments.

Active instruments send a pulse of electromagnetic radiation to the planet's surface and measure
565 the backscatter in terms of time, power and polarisation. From simpler to more complex performance, active instruments are altimeters, scatterometers and synthetic aperture radar (SAR). Altimeters send a pulse to the nadir, i.e. perpendicular to the planet surface with incidence angle equal to 0° . Hence, altimeter swaths are narrow in comparison with other instruments. Since the speed of the pulse and height of the orbit above some terrestrial reference surface (datum)
570 are known, the planet surface profile can be calculated by measuring the time it takes for the scattered signal to return to the sensor. The backscatter power is also measured for ocean wind speed applications. Scatterometers work similarly, but in this case the incidence angle is not null and the time taken by the backscatter is used to locate the signal across a swath, rather than as an indicator of height. By measuring almost simultaneously a point with three different view angles
575 it is possible to derive an estimate of both the wind direction and the wind speed. These instru-

ments are also known as windscatterometers. SAR operation is similar to scatterometers, but its spatial resolution is highly improved by the use ‘aperture synthesis’, which involves recording the full backscatter signal from multiple echo returns by a single low-resolution antenna in multiple sequential locations (Woodhouse, 2005, chapters 10).

580

Finally, the global navigation satellite system reflectometry (GNSS-R) is a passive receiver. It takes advantage of signals transmitted in the microwave region by navigation satellites that hit the Earth’s surface and are scattered back into space. It is not considered an imager *per se* because its receivers can only measure points or lines of opportunity, only in one dimension, but these can be
585 combined to create 2D images. GNSS satellites themselves are only transmitters, such as American GPS, European Galileo, Russian GLONASS, or Chinese BeiDou missions. Therefore receivers are necessary to measure the scattered energy in a bistatic configuration (so called because the transmitter and receiver are in different locations); these can be on-board satellites or on Unpiloted Aerial Vehicles. The GNSS-R technique is not as mature as other active instruments, but it is not
590 limited by the revisit cycle.

Table 1: General characteristics of passive and active imagers, and GNSS-R.

| Instrument | Orbit | Revisit cycle | Swath width | Spatial resolution | Raw measurement | Application |
|-------------------|--|-----------------------------|---------------------------------------|--|--|---|
| Optical | Sun-synchronous, Polar | 2 – 16 days | 35 – 400 km | <1 - 90 m | Radiance | Multi-purpose imagery (IWR), Ocean color/biology (OCB) |
| Near-Infrared | Sun-synchronous, Polar | 2 – 16 days | 35 – 400 km | <1 - 90 m | Radiance | Multi-purpose imagery (IWR), Ocean color/biology (OCB) |
| Radiometer | Sun-synchronous, Polar | 2 – 16 days | 1,000 – 1,800 km | 25 – 50 km | Brightness temperature | Ocean salinity (OS), Ocean surface winds (OSW), Sea surface temperature (SST) |
| Altimeter | Sun-synchronous, Polar | 2 – 16 days | 200 km | 10 – 15 km | Backscatter (time, power and polarisation) | Ocean surface winds (OSW), Ocean topography/currents (OTC), Ocean waves (OW) |
| Scatterometer | Sun-synchronous, Polar | 2 – 16 days | 500 – 1,800 km | 12.5 – 50 km | Backscatter (time and power) | Ocean surface winds (OSW) |
| SAR | Sun-synchronous, Polar | 2 – 16 days | 20 – 400 km | 10 – 2,000 m | Backscatter (time, power and polarisation) | Ocean surface winds (OSW), Ocean topography/currents (OTC), Ocean waves (OW) |
| GNSS-R | Geostationary, Medium and Low Earth Orbits | Possibility of 24h coverage | No swath, 1-D measurement opportunity | No resolution, 1-D measurement opportunity | Backscatter (power) | Ocean surface winds (OSW), Ocean topography/currents (OTC), Ocean waves (OW) |

3.2. Satellite data processing

The satellite based EO value chain pipeline is generally sub-divided into 3 categories; upstream, which includes the manufacturing and operations of satellites as well as their launch, midstream, which includes government and commercial operators that sell or distribute EO data and downstream, which involves the conversion of data into value added products. Despite the tremendous costs and innovation that occurs in the upstream category, to reach the stage of mature operational service provision it is the latter two categories which still pose the greatest challenges, but also the largest opportunity. Historically, all three categories of the EO value chain have been dominated by government and military organisations. The playbook consists of a government or military entity designing, building and launching a satellite (upstream), down-linking, processing and distributing the data freely on a platform (midstream) and providing some tools or algorithms for end users to extract specific value added information from the data themselves (downstream).

A good example of this public end-to-end approach is the European Union's Copernicus program. The program pulls together downstream data obtained by the ESA, NASA, EUMETSAT and other government organisations' environmental satellites, air and ground stations and sensors. The midstream data and information is processed and distributed free-of-charge to registered users on a centralized platform (Sentinel Hub, Sentinel Hub (2020)). Finally, users are able to generate downstream value from the data through algorithmic tools provided either by Copernicus or developed by the users themselves. The most advantageous benefit from this type of end-to-end design is the availability of a wide range of data and information for free, and with an open licence to commercialise services on the back of this data (e.g. Sentinel 1 and 2, Figure 6 and Figure 7).

While public programmes like Copernicus have been successful in providing a wide service to a variety of sectors (their web catalogue for advanced level products created from satellite data for marine applications offers the ability to generate value added information), these are not optimised to fully meet the midstream and downstream demands of specific niche sectors like offshore renewable energy. Under these models, data is processed and delivered at too high of a

620 latency, making real-time use of many data sets impossible. Additionally, users are required to have high technical capabilities in order to overcome the steep learning curve that comes with a Copernicus-enabled platform. Private companies like Orbital Micro Systems (OMS), Orbital Micro Systems (2020), are attempting to bridge gaps created by insufficient data latency, data storage and technical hurdles. Central to this approach is developing an infrastructure that improves 625 the midstream and downstream categories in the EO pipeline. The two key elements of this infrastructure includes 1) utilizing more global ground stations for lower latency, and 2) utilizing cloud, Artificial Intelligence and Machine Learning technologies to develop a platform that is easy for users to generate value added information. Many companies, such as Amazon AWS (Amazon Web Services, the satellite communications business area within Amazon), have plans to 630 dramatically increase their ground station networks, which will both reduce processing costs and enable real time extraction of data Amazon (2020).

3.2.1. Satellite data integration

NASA and partners, including the US Weather Bureau, launched the first low orbit weather satellite, Tiros-1, in April 1960. Tiros-1 had cameras on board recording visible wavelength images 635 of cloud patterns and weather systems. The excitement generated by this technological innovation was enormous as it marked a giant step change in the ability of the Weather Services to locate and track the development of key weather features over large areas, significantly enhancing forecasting capability.

640 Over the last 60 years, the influence of satellite EO on weather forecasting and climate monitoring has continued to grow enormously, moving well beyond images and strongly into the use of data. One of the most significant activities that capitalises on the value of satellite data is the process of data assimilation into computer-based numerical weather prediction models (NWP). Real-time satellite-generated data, along with measurement data from a range of other measure- 645 ment technologies such as weather balloons, weather radar systems, aircraft measurements and weather buoys, are combined and assimilated into numerical weather prediction models. The evidence provided through these measurements makes it possible to nudge the computer simulation

closer to reality, resulting in a more accurate starting point for the forecast. Since errors in the analysis can quickly lead to the growth of errors in forecasts (the butterfly effect), the importance of this data assimilation step is all too clear for forecast users, including the offshore renewable energy sector. There is also a strong reliance, of course, on state-of-the-art communication systems to facilitate the rapid dissemination of the measurement data, and satellites have a part to play there as well.

Due to the large spatial areas sampled by satellite sensors, including remote areas where it is currently difficult or impossible to make measurements with any other technology, satellite sensing now makes the biggest difference of all measurement platforms to improving the accuracy of the weather forecast. However, it is not just the forecast-dependent stages of renewable energy projects, Construction, Operations and Maintenance, and Power Production which benefit. Satellite data is also an important ingredient in the production of re-analysis datasets which are widely used in the sector for project planning and monitoring, risk assessment and site selection, for example in the simulation of inter-annual variability and economic viability. Re-analyses provide a multi-decade gridded climatological record of historical atmosphere and ocean variability on either a regional or global domain. The assimilation approach is similar to that used in NWP, except that the window of the observations is not so time critical in this case. Also, the forecast model version used as a first guess is kept consistent over the duration of the re-analysis record. New re-analysis products are continually being produced, the purpose of each being different, for example long century scale records (e.g. Laloyaux et al. (2018)), higher resolution within a specific regional area (e.g. UERRA (2020)), close to real-time updates, Hersbach et al. (2018), or variables which are especially useful for particular user needs, such as 100m wind or wave parameters (e.g. Borsche and Kaspar (2016), Hersbach et al. (2018)). Moreover, the Copernicus Marine products have been applied in different scenarios for ORE, e.g. O'Connell et al. (2020).

ERA5 is an example of the current state-of-science in re-analysis products, providing hourly estimates of atmospheric, land and oceanic variables at 31km resolution on a global and close to

real-time basis, Hersbach et al. (2018). Figure 9 shows the full range of observational data which have been assimilated into the ERA5 process since 1979, emphasizing the diverse and growing role of satellite data in climate monitoring. February 2020 was an especially windy month in North-west Europe, experiencing three named storms (Ciara, Dennis and Jorge); we can see in Figure 10
680 how this compares with the long-term ERA5 records dating back to 1979. Meanwhile, taking the 2019-20 winter season as a whole, Figure 11 shows how many hours saw more than 15ms^{-1} wind speed at 100m height compared to the ERA5 long-term-average.

3.3. *Past, present and future satellite missions*

685 Satellite missions have been historically supported by governments through their space research organisations, such as NASA (National Aeronautics and Space Administration), ESA (European Space Agency), Roscosmos (Russian State Corporation for Space Activities), or CNSA (China National Space Administration). The first satellite missions were born during the Cold War, as a preparation step after the devastating consequences of World War II. Being able to dominate the
690 space sector was the next step to prepare for any future international conflicts, and this started the so called “space race”, NASA (2020). Since then, the global importance of satellites has grown to include the critical environmental component, and most of the public satellite missions nowadays focus on climate-related activities. The information provided by these is key for research towards sustainable development.

695 The first satellite in orbit, Sputnik I, was successfully launched on October 4, 1957. This small satellite (58 cm in diameter) was the starting point of the space age. Since the launch of Tiros-1 in 1960, many missions have been completed. In those missions, satellites would carry one, or multiple, instruments on-board and those operated at different bands of the electromagnetic
700 spectrum, from visible to microwave wavelengths. Thus, the amount of historical satellite data is important. However, in the past much of the satellite data was not freely available to the general public. Research in EO and satellite instrumentation has enhanced the capabilities of those sensors in terms of resolution, swath, etc. Hence, a global picture of the satellite missions is necessary to

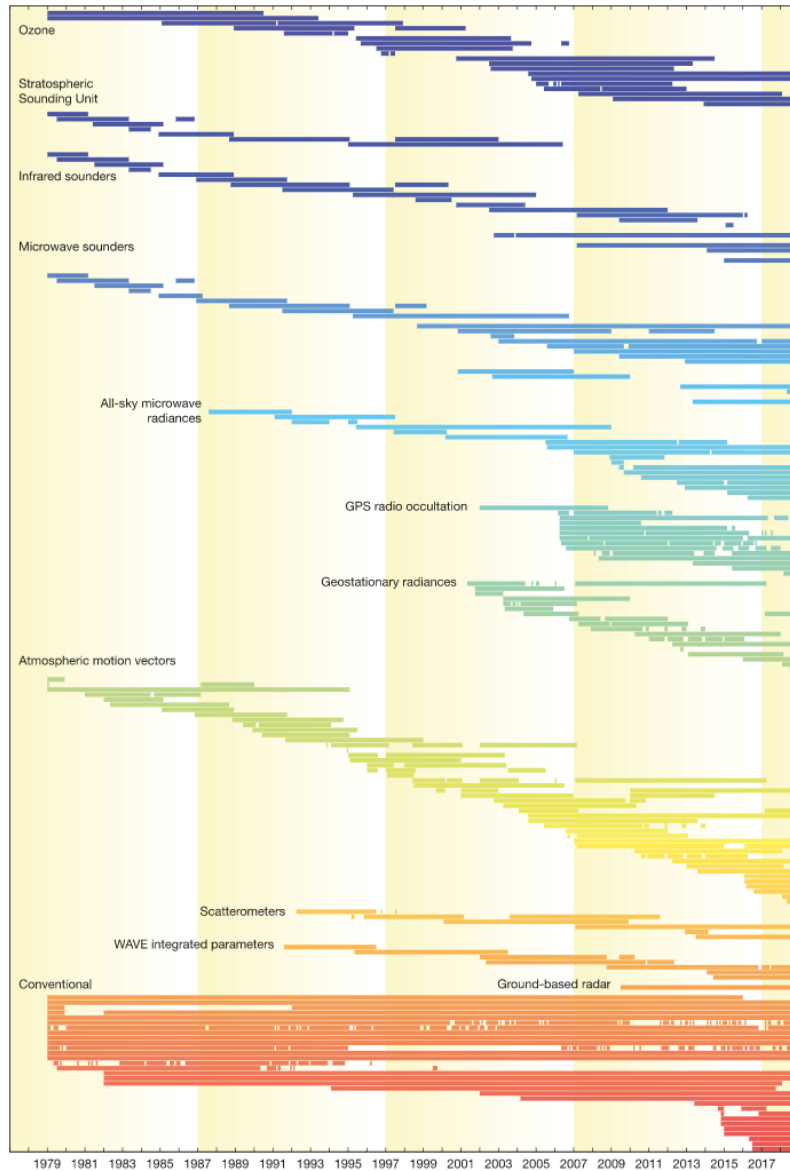


Figure 9: Data use in ERA5 since 1979. The horizontal bars represent the use of a satellite instrument or ground-based radar, or a source of conventional data, such as aircraft, weather stations, buoys, ships, or radiosondes (image courtesy of Paul Poli).

understand the vast amount of data collected from satellites. The number of missions is too long
705 to name each one. Instead, three different graphs are shown to illustrate the nature and amount
of missions. The source of information for these graphs was the CEOS database that collates
information on all past EO missions, including current ones and those currently planned Spazzio
and ESA (2020). The first bar plot, Figure 12, represents the total number of missions by type

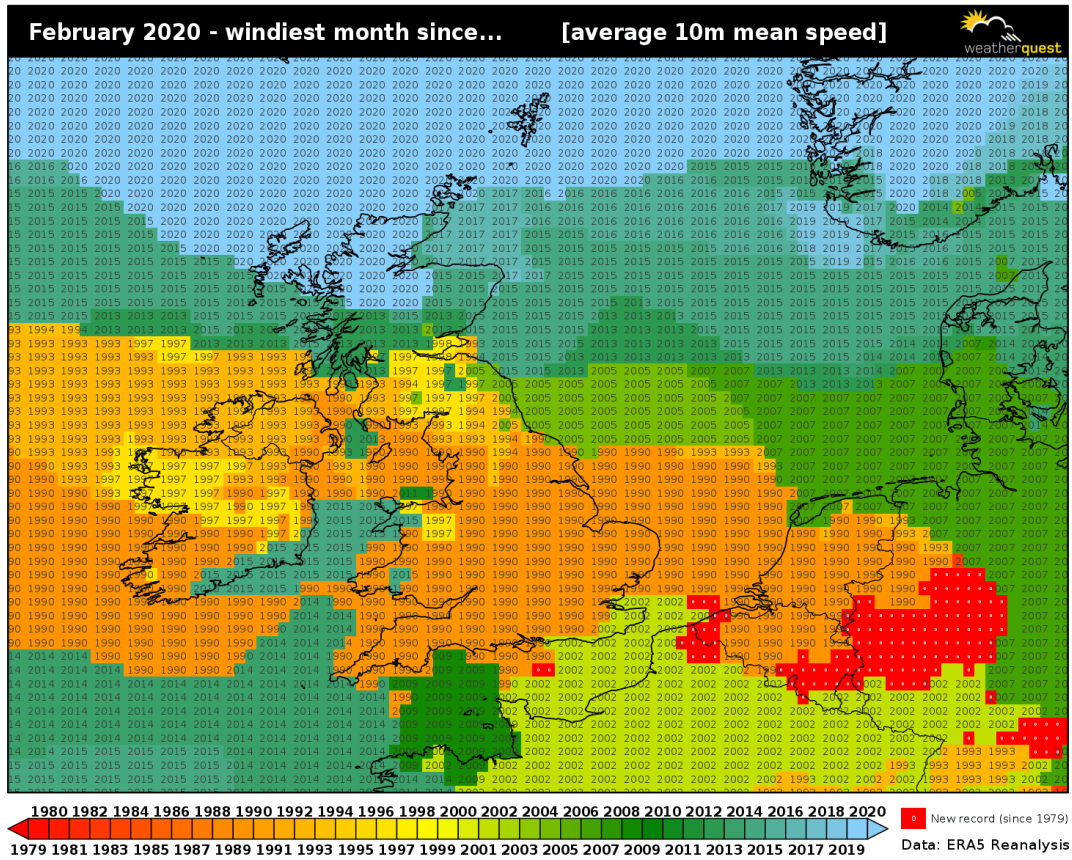


Figure 10: The previous year when monthly mean 10m wind speed exceeded that recorded in February 2020. Source: Weatherquest Ltd.

of instrument. Sounders and GNSS-R were not included, only imagers. Radiometers encompassed
 710 3 different instruments: Earth radiation budget sounding radiometers, imaging multispectral radiometers (passive microwave), and multiple direction/polarisation radiometers. Near-infrared instruments were a blend of imaging multispectral radiometers (vis/IR) and hyperspectral imagers. In this case, near-infrared instruments use bands of the spectrum at near-infrared wavelengths. Future missions included those with “approved”, “being developed”, “proposed” and “prototype”
 715 status.

As shown in Figure 12, near-infrared instruments have been used in more missions than any other. Radiometers are the second instrument in use. In meteorological applications, the near-

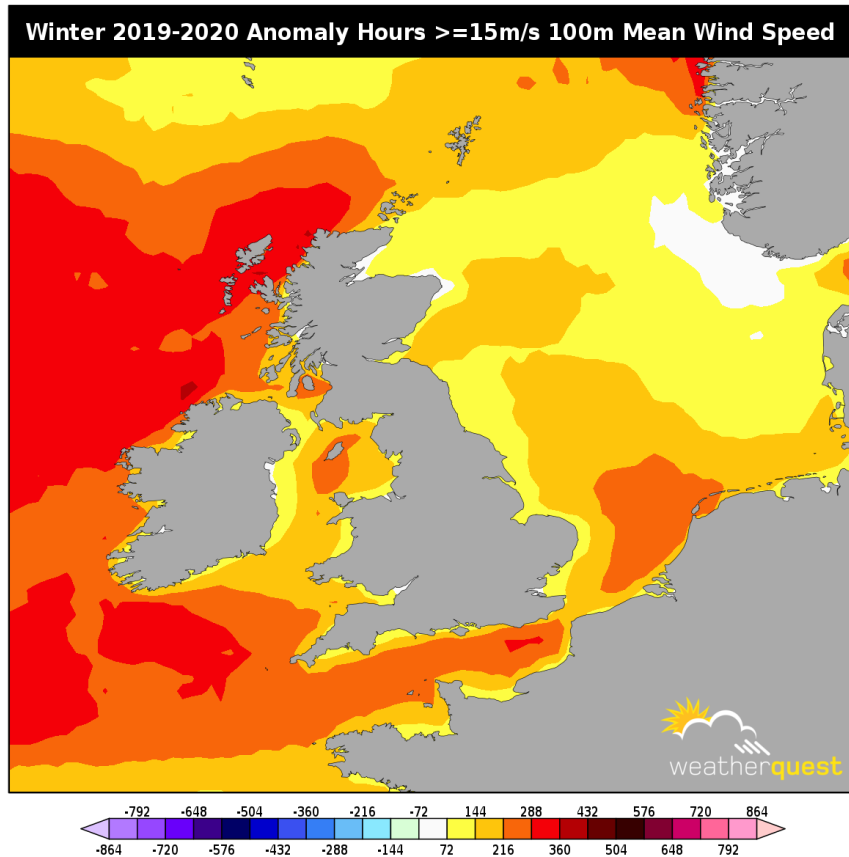


Figure 11: The number of hours with 100m mean wind speed $\geq 15 \text{ m s}^{-1}$ during Winter (December, January, February) 2019–2020 relative to the long-term ERA5 average. Source: Weatherquest Ltd.

infrared and radiometers are the two main satellite instruments used as input to Numerical Weather Prediction (NWP). Except for optical instruments, past missions outnumbered present missions. The same trend was observed between past and future missions, except for scatterometers and SAR. In the next graph, Figure 13, past missions (i.e. completed), were not included. Only those with “operating”, “approved”, “planned”, and “considered” status were included. Instead of arranging missions by type of instrument, in Figure 13 missions were arranged by the detailed measurement over the ocean only. Acronyms for the different types of measurement are detailed in Table 2.

The most monitored parameters from satellites are sea surface temperature (SST) and wind speed over the sea surface (WS1). This was expected as near-infrared imagers and radiometers

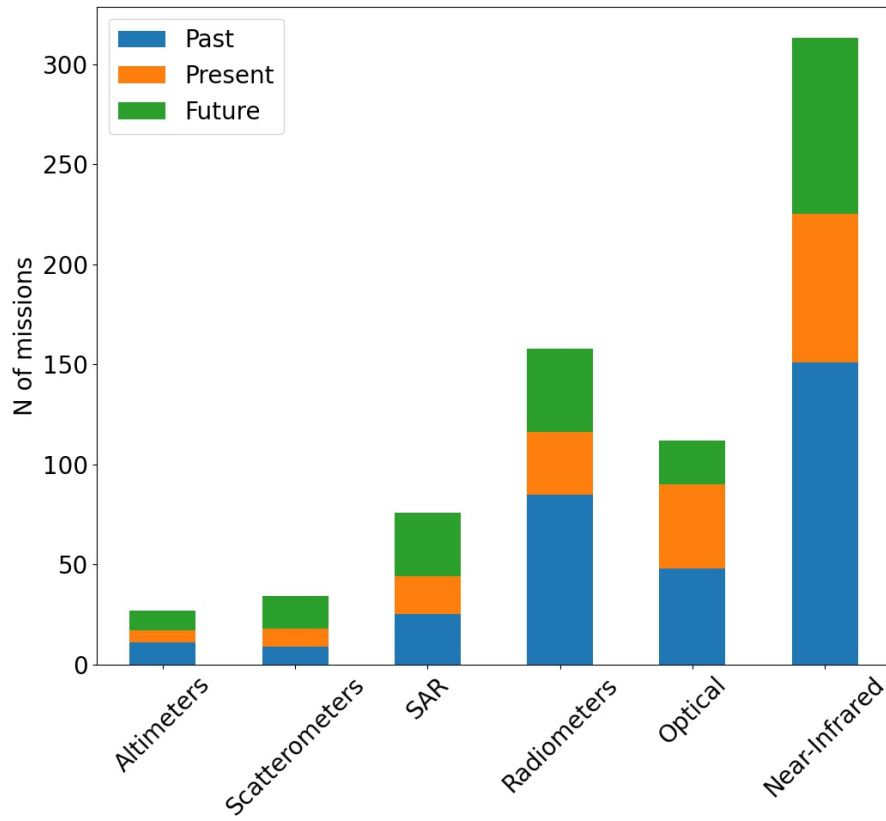


Figure 12: Number of missions by instrument. Figure developed using CEOS Database (European Space Agency), European Space Agency (2020a).

can be classified as multi-purpose imagers, and many of them can measure SST and wind speed.

730 Ocean colour biology (OCB) measurements are mainly taken by high resolution optical imagers, which can also be classified as IWR (imagery of water radiance, multi-purpose imagery), see Table 2 for description. Ocean Waves (OW) and Ocean Topography/Currents (OTC) measurements are mainly measured by active microwave instruments: altimeters, scatterometers and SAR. Hence the number of missions for OW and OTC was low in Figure 12 for the passive instruments. Only

735 one mission was found for ocean salinity, ESA’s microwave radiometer for Soil Moisture and Ocean Salinity (SMOS). More information about this is provided in the section 4.5.1.

The last graph, Figure 14, classifies the number of missions by years in operation and type of measurement. Completed missions are not included. Compared with Figure 12, where all past

Table 2: Types of measurements and their acronyms.

| Acronym | Detailed measurement | Type |
|----------------|--|---------------------------------|
| IWR | Ocean imagery and water leaving radiance | Multi-purpose imagery (IWR) |
| OCB1 | Color dissolve organic matter | Ocean color/biology (OCB) |
| OCB2 | Ocean chlorophyll concentration | Ocean color/biology (OCB) |
| OCB3 | Ocean suspended sediment concentration | Ocean color/biology (OCB) |
| OS | Ocean salinity | Ocean salinity (OS) |
| WS1 | Wind speed over the sea surface | Ocean surface winds (OSW) |
| WS2 | Wind vector over the sea surface | Ocean surface winds (OSW) |
| OTC1 | Bathymetry | Ocean topography/currents (OTC) |
| OTC2 | Ocean dynamic topography | Ocean topography/currents (OTC) |
| OTC3 | Ocean surface currents | Ocean topography/currents (OTC) |
| OTC4 | Sea level | Ocean topography/currents (OTC) |
| OW1 | Main wave direction | Ocean waves (OW) |
| OW2 | Main wave period | Ocean waves (OW) |
| OW3 | Significant wave height | Ocean waves (OW) |
| OW4 | Wave direction energy frequency spectrum | Ocean waves (OW) |
| SST | Sea surface temperature | Sea surface temperature (SST) |

740 missions are included, there are slightly fewer missions in the past than in the future and present together. This is also reflected in Figure 14 where the peak is expected to be located between the years 2021 and 2023. Thus, the exclusion of completed, i.e. not currently in operation, missions did not impact the numbers significantly. In the last decade, 2010 to 2020, the number of missions increased exponentially. On the other hand, between 2024 and 2031 a drastic decrease would be
745 expected, as planned missions are replaced by proposed missions in the database. However, more new missions are likely to be proposed in the coming years, filling the pipeline of planned missions. Proposals for new missions often rely on yet-to-be-agreed funding streams and/or the success of previous missions. In terms of measurement type, SST and OSW have the most missions coming in the next few years, followed by IWR, OTC and OCB. Only a few missions include observations
750 of OW, and OS was not represented.

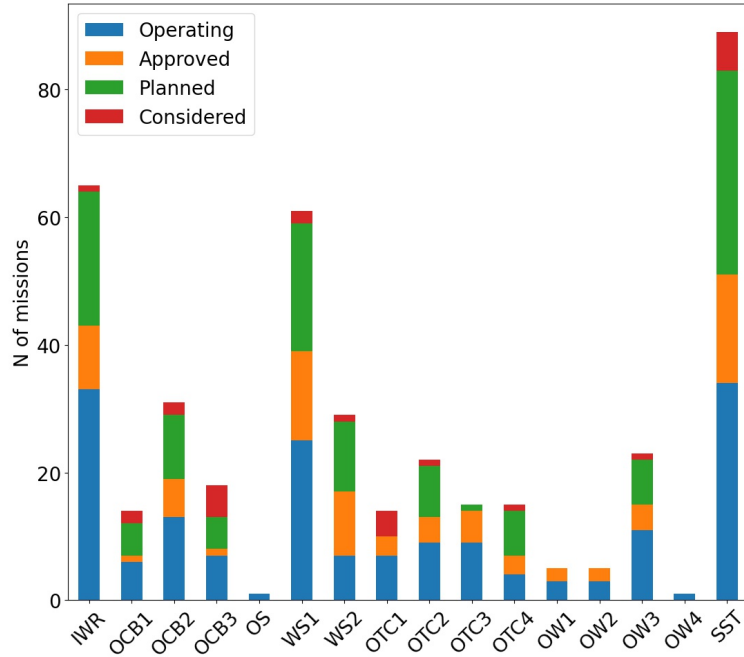


Figure 13: Number of missions by detailed measurements. Completed missions not included. From year 2000 to 2037. Acronyms meaning in Table 2. Figure developed using CEOS Database (European Space Agency), European Space Agency (2020a).

Missions are designated to a type of measurement according to the design specification for the instruments on board. However, due to improvements of algorithms for retrievals and advances in the relevant understanding of instrument measurements, some instruments are able to measure parameters for which they were not specifically designed. For example, Sentinel-2 carries a high resolution optical imager which was planned around making surface water reflectance measurements only (in the ocean science context); but it has now been demonstrated that OCB can also be measured Huizeng et al. (2017). As another example, Sentinel-1 is a SAR operating in different modes and although it has a Wave Mode, there was no expectation that the Scan SAR modes (wide swath) would be able to infer wave properties, however, it has recently been demonstrated as possible Weizeng et al. (2016).

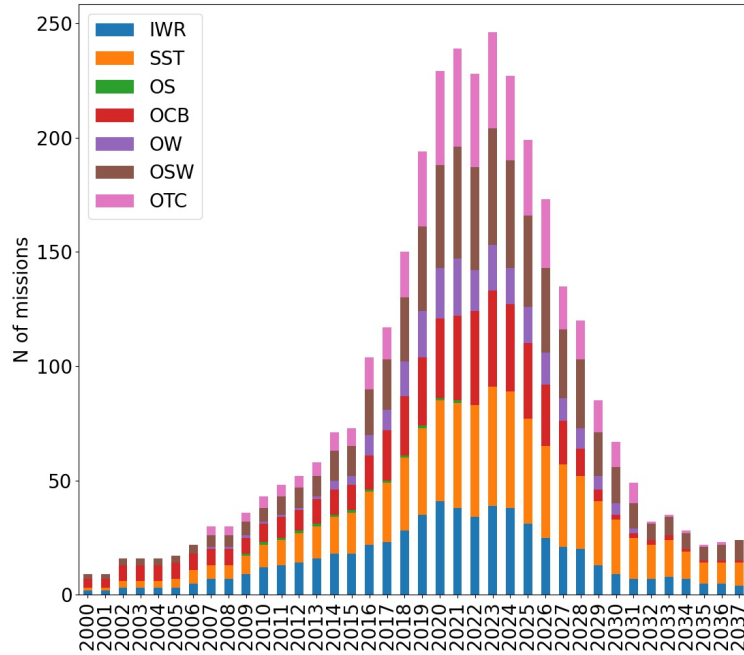


Figure 14: Number of operative missions by year and type of measurement. Completed missions not included. Legend acronyms in Table 2. Figure developed using CEOS Database (European Space Agency), European Space Agency (2020a).

4. Satellite data for offshore renewable energy: synergies and innovation opportunities

4.1. Satellite data to reduce uncertainties for offshore wind farm operation

765 Two types of weather-related uncertainties impact the management of offshore wind farms. One related to weather conditions and the difficulty of producing precise weather forecasts. The other is the uncertain impact of weather on operations, such as the difference between the estimated and actual energy production or accessibility for maintenance, see Figures 15 and 16. These two factors interact motivating the development of application-specific solutions. To quantify time-

770 related uncertainty in global weather models, Cannon et al. (2017) perturbed the forecast to assess the temporal scales for which a weather forecast can be considered more reliable than long-term climatological statistics. Browell et al. (2016) follows a similar line, where the difference in terms of cost from adopting deterministic or probabilistic approaches to estimate access windows for O&M works is quantified. Results showed that 4% of the available weather-windows are not used by

775 wind farm O&M, and that the use of a probabilistic approach could reduce such percentage with minimal cost impact. Furthermore, they showed that by adopting a cost-loss decision process

(incorporating the probability of successfully performing maintenance and the cost of the energy), overall economic operation could be improved, i.e. higher cost of lost energy capture will increase the incentive to restore an unavailable turbine.

780

Coarse spatial resolution of wind and wave data is also a significant factor in these uncertainties. Data of wind speed and sea state available from global and national forecast providers present a coarse resolution with information distributed on a grid size that ranges from 1.5km (e.g. Met Office models for the UK) to 80km, resulting in having one value available for the entire wind
785 farm. Local measurements used to inform and calibrate meteorological models are also sparse. As a result, one value for wind speed and wave height is assumed to be representative for the entire area and used by wind farm managers to direct operations. The high degree of uncertainty in local wind and wave conditions, possibly due to the interaction with the turbine, further increases the difficulties in choosing access windows that will allow safe access to offshore structures. Moving to
790 a turbine-specific approach is desirable, especially for larger wind farms and those with complex bathymetry where conditions across the farm can vary significantly. In this regard, higher spatial and temporal resolution data from satellite missions could significantly improve the operation of wind farms. The extra information that satellite data provides can help better planning for operation and maintenance activities by complementing numerical and weather predictive models.

795 4.2. *Satellite data for short-term power forecasting*

Power forecasting, the prediction of future energy demand and production, plays a relevant role in the operation of electricity systems where supply and demand must balance on a second-by-second basis. This task becomes more challenging as the penetration of weather dependent renewables and electrification of other energy vectors, notably heat and transport, increases. Short-term
800 forecasts of wind power production are required for individual wind farms and aggregated by market participant or geographic region Bessa et al. (2017). They are used by generators to inform energy trading and electricity network operators to maintain a reliable and economic supply of electricity. Wind farm operators also utilize forecast to support asset management processes, such as maintenance access, particularly offshore. The same will be true of other ORE technologies

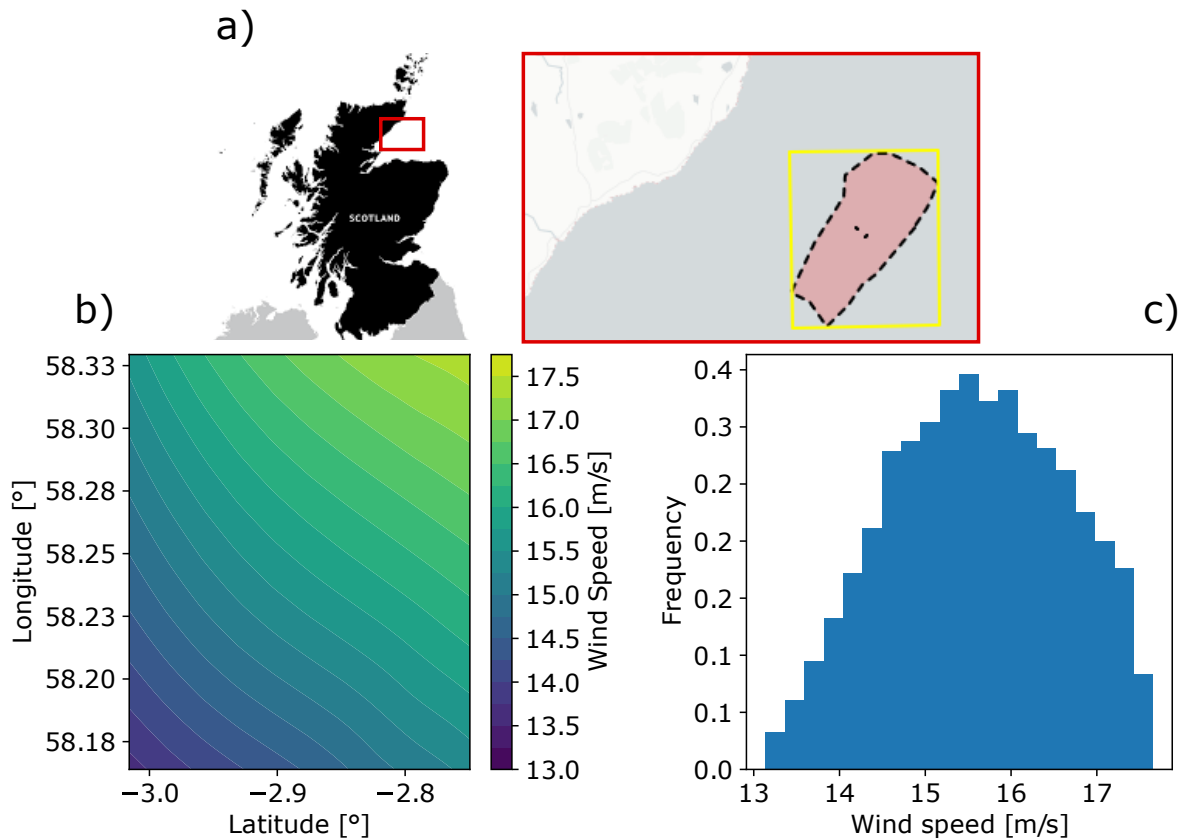


Figure 15: Example of spatial changes in wind speed within the area covered by an offshore wind farm. a) Wind farm location, off Scottish shores. b) Wind map for the area containing the wind farm presented in panel a). The wind field was extracted from maps for wind speed retrieved from SAR imagery available from DTU Wind Energy, DTU (2020). c) Normalized frequency distribution of the wind speed value observed in b), Zen et al. (2020).

805 if/when they reach installed capacities that necessitate short-term forecasting. An example of a wind power forecast is provided in Figure 16.

Short-term energy forecasts are typically produced by post-processing NWP to convert meteorological forecast into energy-specific forecasts, such as the power output of a wind farm Sweeney et al. (2019). Uncertainties and errors result from both the NWP process and weather-to-power conversion. Research is ongoing in both areas to improve forecast skill. Satellite data has been responsible for substantial improvement in NWP skill over the past 40 years and will likely be so in the future Eyre et al. (2019). Innovations such as ESA's Atmospheric Dynamics Mission Aeolus

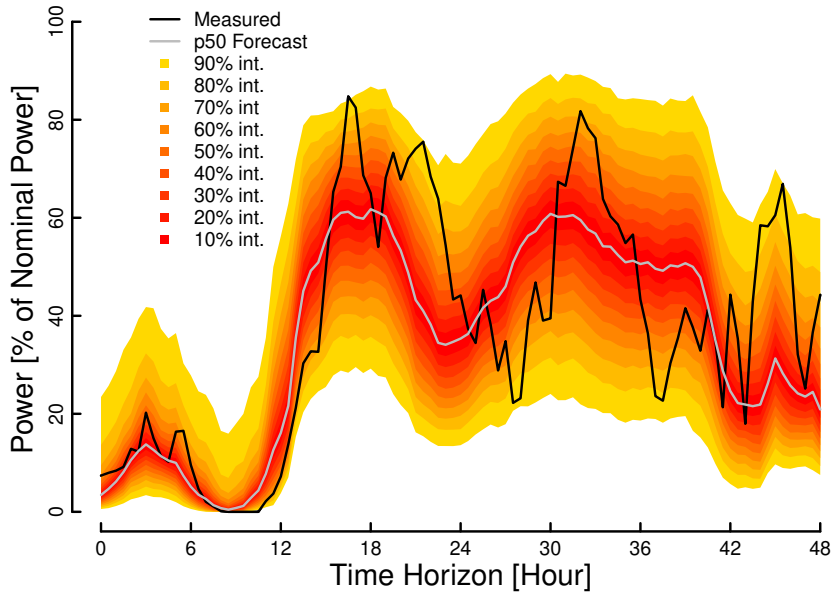


Figure 16: An example of a probabilistic wind power forecast from Gilbert et al. (2020) (under licence CC-BY-4.0). Uncertainty quantification, in this case via prediction intervals, provides valuable information to decision-makers seeking to maximise profits and/or manage risk. Reducing uncertainty, i.e. being able to make such forecasts ‘sharper’ while remaining calibrated (unbiased at all probability levels), would increase their value.

(ADM-Aeolus)—the first satellite to be able to observe wind profiles at a global scale— may yield
 815 significant improvements in wind field forecasts over seas and oceans, where observations are sparse
 today, and therefore improvements in offshore wind power forecasts too. A limitation of NWP is
 the latency introduced by data assimilation and the computational time required to run the models
 themselves. By the time forecast data is available, the most recent observation assimilated may
 be several hours old and even short-range NWP forecasts are subject to epistemic (or systematic)
 820 uncertainty. Therefore, very short-term (minutes to hours-ahead) forecasting incorporate live mea-
 surements of power production and meteorological variables, and may not utilise NWP at all.

Satellite images have been used to produce intra-day (hours-ahead) solar power forecasts and
 bridge the gap between purely NWP-based predictions and local observations from sky cameras
 825 and measured power production Blanc et al. (2017). Estimates of surface solar irradiance and
 cloud motion vectors are derived from these images, which, crucially, are available with latency of
 only minutes. These methods are likely transferable to the wind power forecasting but satellite

observations of wind fields are not available at the requisite spatial or temporal resolution. Observations would be required within 10s of kilometers of a target wind farm with a refresh-rate of one-per-hour or higher. Similarly, very short-term sea state forecasting, used for offshore maintenance operations, could be improved if the sea state could be inferred from satellite data on similar scales.

Power ramps, large changes in power output over short time periods, are a consequence of highly concentrated renewable generation capacity, such as large solar or offshore wind farms Drew et al. (2017). Power ramps may be associated with synoptic-scale (or large-scale) weather features, such as passing frontal systems, or localised events such as convection or cloud formation/dissipation. The existence of synoptic-scale weather features is well predicted but their precise location at a given time may not be, where as convective processes are a common source of error. The precise prediction of ramp timing, rate and duration is an example where improved (very) short-term forecasting would have high value and may be realised through use of satellite data.

4.3. Satellite data for wave forecasting

Accessibility of devices for personnel from various classes of service operation vessels (SOV) and Crew Transfer Vessels (CTV), is key to the planning and execution of operations and maintenance of offshore developments Gundegjerde et al. (2015). Accessibility is determined by numerous parameters, most importantly: sea state conditions Taylor and Jeon (2018), required vessel transit time; and vehicle type Gundegjerde et al. (2015). The transfer and deployment of personnel and equipment to individual offshore locations is a significant cost factor in routine, and unplanned, maintenance and inspection. Sea state is the general conditions of the sea surface. In marine engineering, sea state is often characterized by the significant wave height Holthuijsen (2010). With operations and maintenance comprising 25% of the overall cost of a wind farm, Sarker and Faiz (2016), 25% for wave, and 15% for tidal, Group (2012), accurate spatial and temporal forecasting of sea-state is critical to reduction of the LCOE.

Forecasting of sea-state parameters, including significant wave height and period, is traditionally performed through numerical models following a set of physical rules to simulate the creation and propagation process of waves within an area Staneva et al. (2017). Forecasts are provided at various spatial resolutions, and with different lead times, with varying degrees of accuracy and computational cost. A number of open-source physical forecasting models are widely available, and are used within the offshore industry for planning operation and maintenance Bidlot et al. (2002). Some of the most widely used models are the: WAVE Model, WAM Staneva et al. (2017); Simulating WAVes Nearshore, SWAN Amarouche et al. (2019); and WaveWatch-III, de León and others. (2018). These models provide both hindcast and forecasts of ocean waves at variable resolution. However, when compared with data from floating buoys or wave radars the accuracy of physical forecasts depends on several parameters, such as: forecast lead-time; expected significant wave height; correlation with meteorological conditions, including wind speed, direction and fetch; and bathymetric and environmental flow conditions Bidlot et al. (2002). Moreover, the spatial variability is limited to the grid size used by the respective forecasting model. However, smaller grid sizes require non-linear increases in computational cost Zamani et al. (2008), making them impractical for fine-resolution short-term, live forecasting. Currently, the operational model widely used for sea state forecasting in the UK is the Atlantic – European North West Shelf (Copernicus Marine Environmental Monitoring System – North West Shelf Seas, CMEMS-NWS). Ocean wave analysis and forecast are provided on a regular grid at 0.016 degrees sourced by CMEMS Saulter (n.d.). Physical models are useful for many applications, yet their spatial resolution is not adequate for maintenance planning in the offshore wind farms, which cover range of area in 1–3 km.

Satellite remote sensing in combination with machine learning can help overcome the problems faced by physical forecast models. In particular SAR sensors, such as the ESA Sentinel-1 platform, can provide images in a bi-daily resolution in best cases independent of meteorological conditions and cloud coverage European Space Agency (2019). With recent advances in satellite mapping frequency, Torres et al. (2012), global remote monitoring from satellites now provide the quantity of data needed to train and validate Artificial Neural Networks (ANN) correlating SAR images to

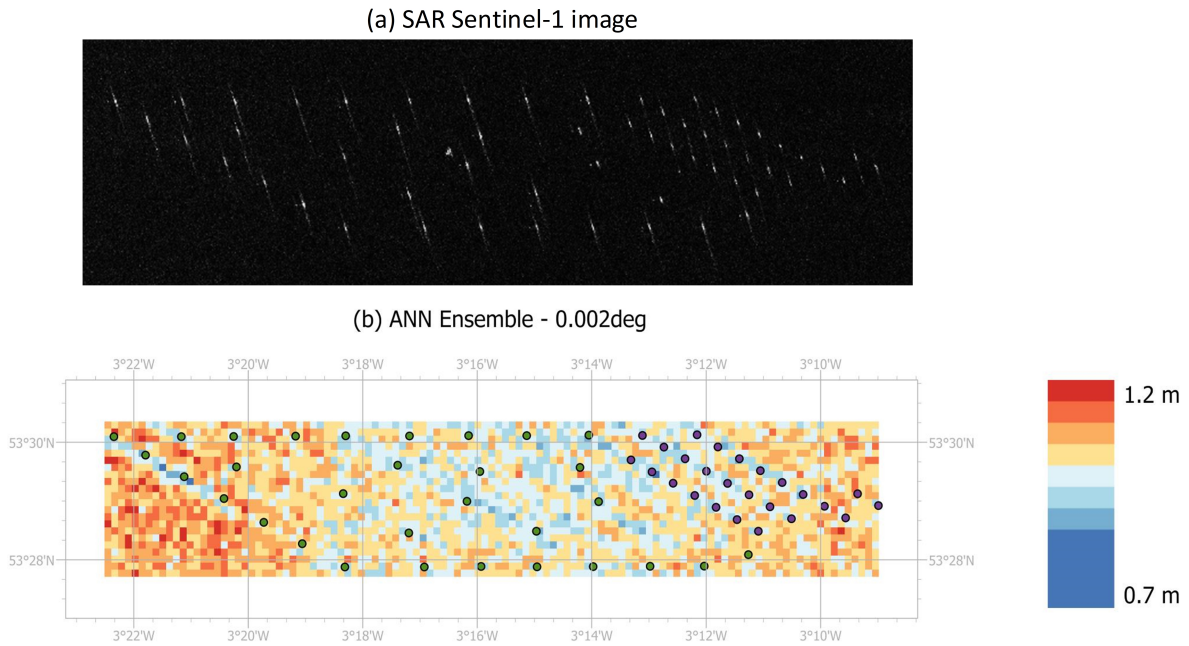


Figure 17: Sea state conditions at 2/4/2019 at 06:30am. In coloured dots the positions of the Burbo Bank and Burbo Bank extension wind turbines are denoted. In (a) the SAR Sentinel-1 satellite image while in (b) the hindcasted SWH using an ANN ensemble model in 0.002 degrees resolution. Modified after Tapoglou and Dorrell (2020).

direct and forecast measurements of sea-state. When trained against a point measurement (i.e. wave buoys and wave radars), ANN processed SAR images provide high spatial resolution of sea-state. Open source spatial resolution of ESA Sentinel SAR images is down to 5 m^2 , over two-orders of magnitude finer than open-source sea state models Torres et al. (2012) (although readers should note that practical speckle-reduced imagery will be nearer 15m resolution in practice). In Figure 17 an example of a SAR image and the resulting SWH hindcast for Burbo Bank wind farm is presented.

890

Using ANN's, the significant wave height at native resolution of satellite images is available. The advantages of such a high fidelity hindcast from a SAR image are multiple, including: 1) finer resolution information than any other source of information available; 2) they are unaffected by cloud cover and meteorological conditions; and 3) available in normal time intervals (i.e. hours). Moreover, further work is needed to use ANN's to integrate long-time series of SAR data and develop computationally efficient sea-state models below the resolution of numerical forecasts. Such nested models balance the need for fine-scale spatial resolution, accuracy, and forward temporal

895

forecasting needed to optimize operations and maintenance, reducing the LCOE in offshore wind energy sector Tapoglou and Dorrell (2020).

900

Contrary to expectations, better satellite image resolution would not improve the results of such a model in this type of application. The resolution of Sentinel-1 SAR images is already high enough, causing a very noisy spatial distribution of significant wave height that forces the grouping of neighboring pixel values in order to get a usable result. To produce optimal results, the SAR resolution should be similar to the wavelength of the hindcasting wave conditions. Optical images from other satellites cannot be used in similar ways with current deployments, since the number of usable images (low cloud cover, different lighting conditions per day) reduces the reliability of the results. However, introducing all-weather remote sensing technologies and improving radar satellite capabilities, their temporal resolution could vastly improve the model and extend its usability into live forecasting of wave height in offshore locations.

910

4.4. Satellite data for tidal forecasting

The issues here are very similar to those for the wave sector. Explicit to tidal stream is the need for prediction of extreme wave–current interaction events. This currently relies on a good quality 3-D regional fluid model (preferably two–way coupled wave–current systems) to provide predictions of the fluid velocity field and turbulence. Satellite data have substantial scope to support the development of tidal range schemes. In the first instance, satellite data can provide data to attest the accuracy of numerical models employed in the resource assessment of tidal energy. Satellite imagery can be used to evaluate whether coastal models capture inter-tidal and inundation processes, that are crucial for impact assessments of the schemes. In addition, data can be used to help identify changes in salinity and sedimentation processes using optical data, see section 4.5.2, and SAR and altimetry techniques. Satellite data can be beneficial indirectly, for example, storm surges need to be predicted using satellite data that serves as input to forecast models. There are opportunities for innovation in employing satellite data to quantify the impact of large scale tidal energy developments. For recently developed schemes, such as in the

925

Lake Sihwa tidal power station, Association (2016), satellite data before and after the construction can provide an insight to inundation and water quality changes due to the presence of the structure.

4.5. Satellite data for environmental monitoring

930 Environmental monitoring is a key tool to minimize environmental degradation and pollution, disappearance of cultural heritage and landscape, or impacts on human health caused by human interventions Sadler et al. (1999). Environmental legislation, such as European Union Environmental Impact Assessment (EIA) Directive (85/337/EEC) and National Environmental Policy Act (NEPA) of 1969, has been improving over the years with multiple adjustments. Although EIA
935 has strengthened its role in decision-making processes over the last 15 years, understanding anthropogenic impacts on the environment is still incomplete due to lack of adequate monitoring programmes Jha-Thakur and Fischer (2016) and the scarcity of ORE installations Mendoza et al. (2019).

940 To date, EIAs of ORE developments are mainly site-specific and device-specific Mendoza et al. (2019), and for an effective environmental assessment, proper guidance is needed, as well as best practice examples, better public engagement, and a decision-making process based on evidence and multiple criteria, Campos-Guzmán et al. (2019), Fischer (2019), Sinclair et al. (2018), Fischer (2019). There is still the need for much research to achieve a universal methodology for
945 the EIAs Mendoza et al. (2019), which should also include new long-term climate change targets within operational and mitigation frameworks of future projects Fischer (2019). It is important to consider climate change effects alongside environmental and physical changes, following ORE developments (Figure 17). Exploring how both of these pressures will change marine ecosystems requires a holistic approach to consider interactions between species and their environment. This
950 type of assessment requires long-term data sets across multiple trophic levels, thus being able to utilize different sources of information is critical to support the EIA process and decision-making. In addition, pressures need to be set in the context of cumulative pressures from other marine industries and users in the area to aid the identification of potential frameworks for in-combination

assessments across multiple sectors.

955

Given the cost and capacity related to data collection, science-based management must focus on the optimisation of the use of existing data and evaluate the relevance of new data explicitly within a value-of-information framework Burgess et al. (2018). Conventional EIA relying on direct sampling and site-specific analysis is a costly, time and resource consuming process that can offer
960 a direct and precise impact analysis but limited to the sampling effort, area and time series Patil et al. (2002). Thus, remote sensing offers a different set of data at a much extended temporal and spatial coverage, representing a relatively cheaper tool to achieve a geospatial cumulative EIA for large and long-term installations, but presenting some limitations related to image resolution and targets Patil et al. (2002). Still, analysis of remote sensing data can be used as an effective
965 tool in EIA studies to assist the understanding of complex interactive effects within the physical and biological environment, to support the understanding of cumulative effects and minimise uncertainty with future climate change to aid the evidence-based decision-making process Patil et al. (2002), Moufaddal (2005). Satellite data allow evaluation of the environment and monitoring of changes throughout different spatial and temporal scales, which can be used in combination
970 with field observations and expertise knowledge. An example of this integrating technique is the spatial multi-criteria analysis implemented through geographic information systems (GIS), where the combination of multiple heterogeneous datasets (objective data and subjective values, e.g. key public concerns) into a geospatial analysis would help in visualizing, evaluating and structuring EIA for current and future scenarios Gonzalez and Enríquez-de Salamanca (2018), González et al.
975 (2019).

4.5.1. Physical processes

Organisms need to adapt to their habitat to be able to survive. Understanding the physical characteristics of a habitat and how these might change with climate and placement of ORE devices
980 is a key area and requires an understanding of the physical processes, related to hydrology and geomorphology. Currently, physical habitat models (e.g. Scottish Shelf Model, Scottish Government

(2020)) are a reliable tool to investigate the impacts of tidal and wind energy on the environment. Extraction of energy from tidal and wind devices reduces the energy in the environment and causes local and far field hydrodynamic changes. Intertidal habitats can be affected by the variation of the principal tidal harmonics (sinusoidal components with amplitude and frequencies determined by local conditions, the sun and the moon gravitational forces), which causes temporal changes of the ebb-flood cycle De Dominicis et al. (2018). Fish and top-predators rely on these repeated tidal patterns, but scientific evidence of the possible effects of this variation are lacking. The most known consequence of wind farms relate to the atmosphere: the “wake effect” (the wind speed reduction behind wind turbines) can induce a change of air temperature and sea surface pressure up to 15 km away from the wind farms Hasager et al. (2013) causing local climates variations and cloudiness.

The foundation of every wind turbine can be seen as an obstacle in the sea and their aggregation within farms might lead to an impact on the horizontal and vertical currents of the sea circulation within a local spatial scale. Changes of currents intensity or directions might influence the sediment transportation, stratification and mixing rate of coastal and offshore waters, and consequently affect the primary productivity of these regions by altering the nutrients supply and light availability in the photic layer (surface part of the sea penetrated by sunlight). Few studies have included analyses of the impact on primary production, but their results differ among regions due to their unequal topographic and oceanographic conditions. In shallow waters (< 25 m), it has been reported that the reduction of wind pressure causes an increase of net primary production due to a decrease of mixing events and a sediment load van der Molen et al. (2014). However, the effects on offshore, deeper, waters are not yet documented. Tidal turbines might also affect the primary productivity alongside the channels, however the consequences could appear at larger scales than the weaker effect, over hundreds of kilometres away from the turbines, causing the formation of new shelf banks, less turbidity and an increment of primary production with associated faunal ecosystem effect Van Der Molen et al. (2016).

Hydrodynamic models have become an important tool for marine planning and management

1010 due to their higher resolution compared to reanalysis products (e.g Copernicus, Copernicus (2020))
and representation of OREs De Dominicis et al. (2018). However, some of their limitations include
computational costs and their uncertainty assessment, which is required to aid EIAs and sup-
port decision-making based on model outputs. Empirical data (e.g *in situ* and remote sampling)
then becomes necessary to evaluate model predictions related to physical characteristics, such as
1015 topography, stratification, currents, tides, temperature, salinity, sediment transport, water types
and quality. Satellites have been largely adopted in oceanographic and ecological EIAs, although
it is important to keep in mind that they capture most of the data coming only from the first
layer of the water column. Today, many ocean colour products are available for long time series,
due to different initiatives (e.g. Copernicus, Copernicus (2020); ESA, Barre et al. (2008); NASA,
1020 Le Vine et al. (2007)) which elaborated, standardized and validated many variables (Figure 17A,
B). Oceanographic features that are ecologically significant for the marine environment (phyto-
plankton fronts, temperature fronts, internal waves, upwelling and downwelling regions) can be
derived from satellite images and their spatial distribution and temporal pattern should represent
the key factors for EIAs. On occasion, bathymetric features on the seabed itself can be clearly
1025 resolved in medium resolution satellite images, and could be used to detect scour and wake effects
on the surrounding environment. Moreover, understanding of the spatial and temporal scale and
further *in-situ* habitat data can assist the predictive physical models' uncertainty and enhance
sensitivity.

1030 4.5.2. Salinity and temperature

The issues that ocean salinity and temperature *in situ* measuring techniques present (e.g. low
spatial resolution, poor coverage in coastal areas, or expensive *in situ* measurement systems) can
be overcome by satellite data. Satellites provide coverage of ocean and land around the world.
This can be used to understand time series and trends, and to study local phenomena. One of
1035 the satellites looking at sea surface salinity (SSS) is the European Space Agency's (ESA) SMOS
mission (Soil Moisture Ocean Salinity), using a Microwave Imaging Radiometer with Aperture
Synthesis (MIRAS) from 2010, Barre et al. (2008). Its resolution is 35 km. NASA's Aquarius

mission focuses also in the extraction of SSS from space, with a spatial resolution of 150 km, but only covered 2011-2015, Le Vine et al. (2007).

1040

The MODIS–Aqua mission (Moderate Resolution Imaging Spectroradiometer), Parkinson (2003), covers the Earth’s surface every 2 days, with information in 36 spectral bands. With operations starting in 2000, the MODIS band information is useful to study aerosols, ocean colour (the surface of the ocean changes colour depending on the chemicals and particles floating in the water), phytoplankton and biochemical properties, water vapour and sea surface temperature (SST). Resolutions of 250 m, 500 m and 1000 m (for ocean reflectance) are provided. SeaWiFS (Sea–Viewing Wide Field–of–View Sensor) Gregg et al. (1997) has been used to extract SSS from ocean colour. SeaWiFS was designed to collect ocean biological data from 1997 to 2010, focusing on chlorophyll. Information is recorded in 8 bands, at resolutions ranging from 1100 m to 4500 m.

1050

Recent efforts are focusing on techniques to make more accurate predictions of ocean salinity and temperature. The use of artificial intelligence to estimate oceanographic data is an example. Aparna and Arjun (2018) used a neural network to predict sea surface temperature based on measurements of temperature the day before. Aparna and Arjun (2018). Information for 2 years is predicted with errors around 0.5°C. Garcia-Gorriz and Garcia-Sanchez (2007) predicts sea surface temperature in the Mediterranean using wind data, sea level pressure, dew point temperature, air temperature, and total cloud cover as inputs to the neural network. Predictions on seasonal and interannual SST variability are provided, and these are used to reconstruct incomplete SST satellite tiles (i.e. images). Patil and Deo (2016) combines numerical estimations from the Indian National Centre for Ocean Information Services (INCOIS) with NOAA’s AVHRR SST data to produce temperature in the Indian Ocean by means of a wavelet neural network. Daily, weekly, and monthly temperature values are provided.

1060

The amount of research in the area of SSS is less extensive than SST. Marghany et al. (2010) examines the ability of different algorithms to retrieve SSS from MODIS data, comparing with

1065

physical measurements from the South China Sea. Other studies use neural networks to predict SSS. Geiger et al. (2013) uses salinity data from vessels matched to MODIS–Aqua imagery to train a neural network algorithm that predicts salinity in the Atlantic ocean, with special attention paid to estuaries. Chen and Hu (2017) presents a neural network that predicts SSS in the Gulf of Mexico. Ocean colour from MODIS–Aqua and SeaWiFS is used, with a resolution of 1000 m. Other studies present relevant approaches to obtaining salinity: Olmedo et al. (2018) shows a 6–year study on SSS distributions in the Mediterranean from SMOS imagery, limiting errors from previous research. The work is based on Data Interpolating Empirical Orthogonal Functions (DINEOF), and multifractal fusion. Progressing towards higher resolution products, the research published by Medina-Lopez and Urena-Fuentes (2019), Medina-Lopez (2020) present a methodology to obtain SSS and SST at high–resolution (100m) in coastal areas. A neural network is trained for this purpose, using in situ data from Copernicus Marine, and Sentinel-2 data. Determination coefficients about 99% and most common errors about 0.2PSU (Practical Salinity Unit), Medina-Lopez (2020), and 0.4°C, Medina-Lopez and Urena-Fuentes (2019), show the potential for the use of machine learning in combination with satellite data to progress in our understanding of physical processes in the ocean, see Figure 18. Mixing patterns are clearly visible in salinity derived from multispectral sources.

4.5.3. *Fish and fisheries*

Fisheries make critical contributions to socio-economic development, food security, nutrition and trade. Despite the significant contributions that fisheries provide, they are rarely included in national development policy, due to problems with valuation and access to data, specifically relating to small-scale fisheries. Therefore, a gap in the area of fish and fisheries is the accurate mapping of fishing effort and catches throughout spatial and temporal scales (both annual and seasonal). Fishing vessels are now equipped with a satellite–based monitoring system (VMS), however this is not a requirement for vessels smaller than 12 m. Monitoring the fishing activity and effort through the VMS or automatic identification system (AIS) is key for management of marine activities and contribution to establishing fishing grounds. This type of data would be critical in

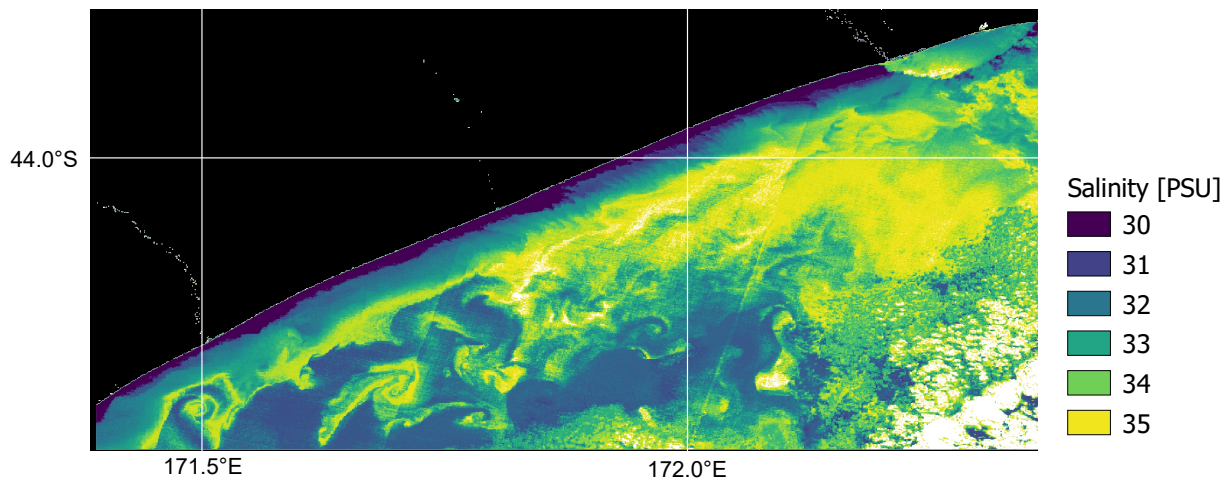


Figure 18: Sea surface salinity at Canterbury Bight (New Zealand), 100m resolution. Results using Sentinel-2 Level1C imagery. Land is depicted in black, clouds in white. Extracted from Medina-Lopez (2020).

terms of monitoring fishing activity adjacent to developments, such as OREs, to aid with baseline
 1095 characterisation and monitor changes in vessel behaviour around OREs to address fisheries displacement issues and uncertainty. Describing fisheries displacement could also be done by utilising top predators' satellite tags (e.g. birds and mammals) to monitor fish school behaviour within and outside wind farm sites. Previous work Russell et al. (2014) has shown that seals utilise wind farm seabed structures for foraging. If fitted with tags to examine foraging behaviour, the reef effect
 1100 on development/recovery time of fish presence around wind farms could also be explored. The application of VMS or AIS data would be critical to aid fisheries monitoring, recruitment to the fishery, stock assessment and movement. In addition, improved understanding of the fishing effort throughout spatial and temporal scales could be utilized in the EIA process to improve assessments related to impacts on commercial fisheries and contribute to the degree of co-existence between
 1105 commercial fisheries and wind farms.

4.5.4. Mammals and birds

Changes in animal behaviour, following anthropogenic disturbance, could pose a conservation threat to the population, if the individuals fail to survive, breed or grow. However, methods to un-

1110 derstand and predict population-level consequences of such changes are lacking. Individual effects,
may be direct and acute, however population-level effects, could lead to changes in abundance and
distribution as a result of ORE deployment. However, these effects are much harder to assess on a
larger spatial scale and other factors need to be taken into consideration, e.g. quality of alternative
habitat, prey availability. In addition, there is a lot of uncertainty relating to collision risk and
1115 entanglement research and how local-scale animal behaviour and space use around OREs might
change. Therefore, the knowledge gap relates to the local scale behavioural responses and move-
ment of marine animals around OREs, what is the abundance and distribution of the animals in
habitats suitable for OREs development, what are the individual consequences of such disturbance
and how these individual effects translate into population-level changes at larger spatial scales.

1120

Satellite tags could be utilized to gather baseline information on marine animals in suitable
areas for ORE development. Such information should ideally be applied across species, seasons
and years to better understand animal movement and risk of collision to better inform population
models and minimize the potential impact of these activities on both individual and population
1125 level. Direct measurements of the presence of birds and marine mammals from satellite imagery
are limited to the pixel resolution of available products, whose maximum resolution is hundreds
of meters for free data and down to 40 cm for commercial products. It is evident that small and
elusive marine mammals, such as seals or dolphins, are difficult to sight using low resolution satel-
lite data, leading most of the research to use unmanned aerial vehicle (UAV) for their monitoring.
1130 Moreover, EIAs for top-predators require repeated and standardized measurements that might de-
mand a large amount of effort to define and apply a specific field sampling design. A recent study
has demonstrated that it is possible to manually detect four different species of whales from very
high resolution satellite imagery (Figure 17C, Cubaynes et al. (2019)). Indirect information about
the presence of the species can be derived from ecological modelling of the suitable habitat use.
1135 Physical and biological variables from remote sensors could be used as proxies to better understand
foraging behaviour and habitat preferences of animals and how these vary with weather conditions
and climate change. Capturing spatial and temporal variation is key to aid EIA processes and

decision-making.

1140 4.5.5. *Habitat change*

It is critical to understand how species use their habitat and feeding grounds, what is the home range before, during and after ORE developments. The habitats in question are those that are likely impacted by ORE instalments, such as sand and gravels, stony reefs, mud, kelp and rocky reefs. The loss of habitat might be operation-specific (e.g. initial building phase of offshore wind farms) and will depend on the size of the ORE being installed. A knock-on effect is also likely to happen on habitats outside the building area. Offshore wind farms, in particular, might trigger the formation/development of new habitats, which might be ecologically crucial. In addition, decommissioning might cause habitat loss and changes in the associated species communities, consequently leading to ecosystem-scale effects. Therefore, the choice of suitable habitat for ORE development is critical and monitoring the habitat (along with species communities) before, during and after the ORE development is recommended. Ideally, here the EIA should be utilized at an ecosystem level, thus considering species interactions with each other and their habitat. ORE devices rely on different physical backgrounds, which are spatially and temporally heterogeneous within the marine environment, characterizing patches of habitats that sustain communities of interacting species. For example, tidal devices could cause changes to benthic habitat due to changes in flow and friction around the device, alteration of sediment transport and scouring, but it is uncertain how such localised hydrological conditions will affect species and their habitat.

Monitoring habitats and species with the aid of remote sensing and satellite data could be essential to examine changes in the benthic, physical habitat as well as to monitor changes in phenology, distribution or migratory behaviour (through the use of satellite tags). Currently, satellite ocean colour measurements provide records of phytoplankton pigment and carbon concentration from the pelagic global ocean with a spatial resolution of about 1km Muller-Karger et al. (2018). Such records are essential in terms of assessing the effects of natural and anthropogenic changes on marine habitats. However, limitations still exist with assessing habitat change over spatial and

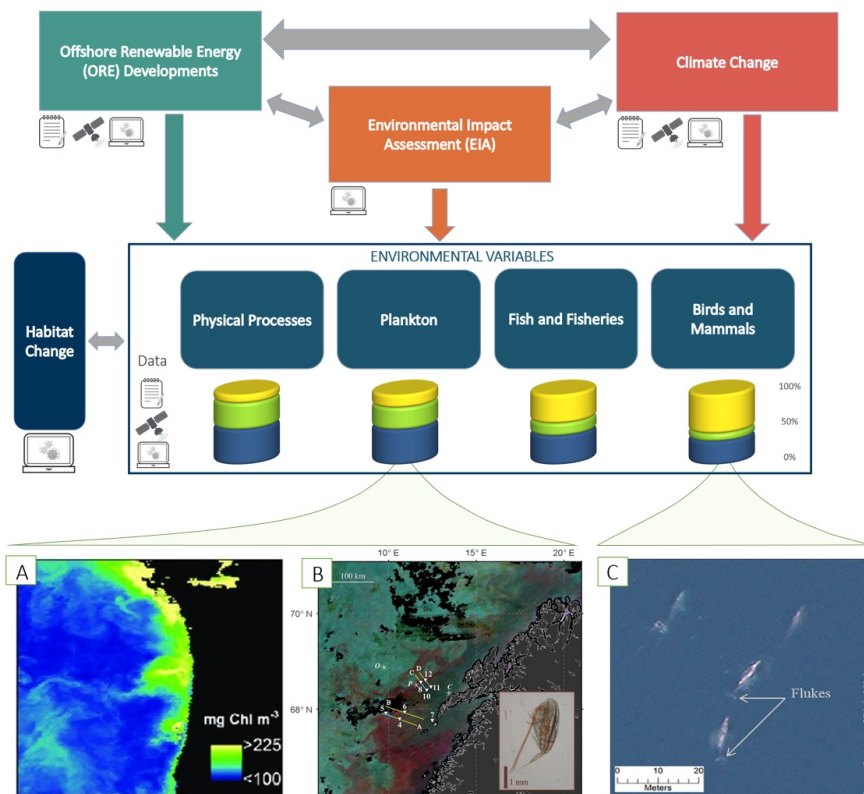


Figure 19: The top image represents key environmental variables and their interactions with ORE, EIA and climate change, that have been discussed throughout section 4.5. The arrows in grey encapsulate some knowledge gaps in the extent of the interaction that have been addressed throughout 4.5. The logos (“notebook”, “satellite” and “laptop”) are used to represent the relevant proportion of data assimilation method to each variable and/or component: *in situ* sampling, satellite imagery or unmanned aerial vehicle and computer modelling, respectively. The bars represent the contribution of each data assimilation method to the environmental variables. The bottom image is an example of satellite images showing (A) different spatial scales of patchiness of chlorophyll a concentration [mg Chl m^{-3}] off the coast of Washington-Oregon at 4km resolution detected by MODIS Aqua (Tweddle et al. (2018), under licence CCBY-4.0), (B) large surface aggregation of zooplankton (*Calanus* spp.) off the coast of northern Norway detected by VIIRS RGB and processed by NEODAAS (Basedow et al. (2019), under licence CCBY-4.0), (C) WorldView-3 satellite imagery of 4 gray whales in Laguna San Ignacio (Mexico) (Cubaynes et al. (2019), under licence CCBY-4.0).

temporal scales, relevant to human activity. Information gathered by satellites should be used to define and assess these habitats, employing topographic (bathymetry and slope) with environmental variables (sea surface temperature, sea surface colour, sea level change, tidal phases, currents and waves). Such information should be utilized to aid understanding of habitat loss, the creation of new habitats and at what spatial scale (local vs larger scale) population level impacts might arise. Seabed habitat data exist from databases such as EMODNET, EMODNET (2020), but these are limited to large scale habitat types in offshore waters. Habitat loss, changes and displacement are inevitable consequences of physical, topographic and biological alterations, which still need more

considerations during EIA of ORE projects.

1175

5. Conclusions

This paper presents a holistic view of the current interactions between satellite and ORE sectors, and future needs and opportunities. The paper covers offshore wind, tidal and wave energy technologies, starting with a brief introduction to their history, current developments, most relevant challenges, and future of the sector. Satellite observations for ocean applications are discussed, covering instrumentation, performance, and data processing and integration. Past, present and future satellite missions are discussed. Both ORE and satellite sectors come together in the final section of the paper, which focuses on innovation opportunities and synergies between them. Uncertainties in standard measurement techniques and the improvements that satellite observations bring are also covered in this work. Wind, wave, and tidal forecasting potential from satellite data are discussed, as well as environmental monitoring capabilities. Applications for Environmental impact assessment of offshore renewables is discussed at length, as satellite observations provide the potential for a more sustainable ORE sector. Measurement of ocean physical properties, as well as fisheries, mammals and birds, and habitats are discussed at the end of the paper, providing a full coverage of all the areas where satellite data can make produce benefits for marine energy.

1185
1190

The greatest opportunities in the near-term are related to the construction and operation of offshore wind farms. Uncertain site conditions, such as wind and wave climatology, are a factor in design and operational strategy, and short-term forecasts are essential in day-to-day maintenance and energy market participation. Due to the expense and impracticality of in situ measurements, the spatial coverage and resolution offered by satellite data has large potential benefits. Use of existing satellite data to infer wave heights close to individual wind turbines has potential application here, and future missions that measure boundary layer wind profiles will be similarly valuable. In both cases there is a need for long-term monitoring to characterise site conditions and continuous real-time observation for operations and short-term forecasting.

1195
1200

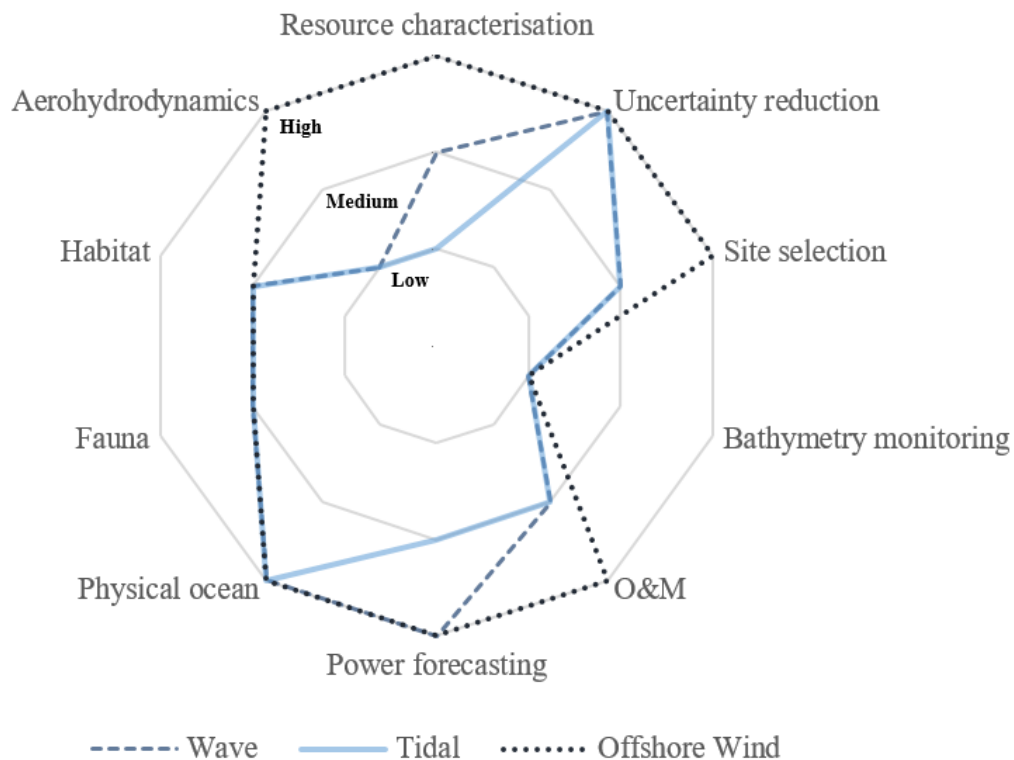


Figure 20: Satellite-ORE Viability Index. This index has been developed as a summary of the factors analysed in this paper, and includes different key features required for the development of a successful ORE project. The index can be “low”, “medium”, or “high” depending on the potential to obtain the required information from satellite data.

We have developed a *Satellite-ORE Viability Index* as a summary of the different factors analysed throughout this paper, see Figure 20. This index provides a visual representation of key areas that need development to ensue a successful ORE project, and the potential to obtain these from satellite data. The plot condenses information for offshore wind, wave and tidal energy projects. Areas like physical ocean or uncertainty reduction have equal high potential for all technologies, while bathymetry monitoring seems to be a more challenging area of research. On the other hand, areas like OM or aerohydrodynamics depend highly on the technology involved and their level of development.

1210

While there are products already available that can be used to assess the ORE sector at different stages, and the potential that satellite data is promising, the main challenges that the synergy

between satellite and ORE sectors present is the lack of interaction between these, as well as limited knowledge transfer. Satellite data offers an extra level of information to complement numerical models and in situ data with global coverage, and in many cases, open source. However, the standard techniques used in the ORE sector are well-established and the authors have the opinion that the introduction of new techniques might be challenging for the uptake in the sector, particularly in less developed areas of ORE, such as tidal and wave energy. Through the development of this article, multiple organisations in academia, industry and government in both ORE and satellite sectors came together to set a baseline and common background to promote a better interaction between these sectors, given the multiple interaction points identified in this work.

Future steps derived from this work include the promotion and establishment of professional networks to improve communications and collaboration opportunities between satellite and ORE actors. This paper and the project associated have started this type of activities, but the authors would like to encourage further conversations at different levels of development to push for a stronger link between the satellite and ORE sectors. Further work on uncertainty in satellite measurements is needed as well in order to understand how uncertainty propagates into derived products of interest for the ORE sector. This links to data quality assessment and standardisation. The ultimate goal would be to assess the effect of the inclusion of satellite products at different stages of ORE development (e.g. design, construction, operations and maintenance, decommissioning) in reducing the cost of energy. This step is critical to strengthen the position of satellite products in the ORE sector and ensuring the continuity of the application of these methods in future developments. This would also serve as proof of concept for the inclusion of satellite-derived data into international standards for the development of offshore renewables.

Acknowledgments

The authors would like to acknowledge Supergen ORE Hub, grant EP/S000747/1, for the Flexible Funding provided for the SCORE project. G.S. Payne would like to acknowledge the funding from the West Atlantic Marine Energy Community (WEAMEC) of the “Pays de la Loire” French

1240 Region through the RC+ project. A. Angeloudis would like to acknowledge the NERC Industrial
Innovation fellowship grant NE/R013209/2.

Note

All authors have contributed equally to the paper. The order of authors is the following: the
University of Edinburgh–Strathclyde University SCORE team is listed first, and other contributors
1245 are then listed in alphabetical order.

References

- Accensi, M. and Maisondieu, C. (2015), ‘HOMERE’.
URL: <http://doi.org/10.12770/cf47e08d-1455-4254-955e-d66225c9dc90>
- Alifdini, I., Kismawardhani, R. A., Wirasatriya, A., Sugianto, D. N., Yaakob, O. b. and Widodo, A. B. (2018),
1250 Identification of tidal energy resources using satellite altimetry data for indonesian seas, *in* ‘2018 4th International
Symposium on Geoinformatics (ISyG)’, pp. 1–6.
- Amarouche, K. et al. (2019), ‘Evaluation of a high-resolution wave hindcast model swan for the west mediterranean
basin’, *Applied Ocean Research* **84**, 225–241.
- Amazon (2020), ‘Amazon Ground Station’.
1255 **URL:** <https://aws.amazon.com/es/ground-station/>
- Andersson, J., Hellsmark, H. and Sandén, B. A. (2018), ‘Shaping factors in the emergence of technological innovations:
The case of tidal kite technology’, *Technological Forecasting and Social Change* **132**, 191–208.
URL: <https://www.sciencedirect.com/science/article/pii/S0040162517302627>
- Angeloudis, A. and Falconer, R. A. (2017), ‘Sensitivity of tidal lagoon and barrage hydrodynamic impacts and energy
1260 outputs to operational characteristics’, *Renewable Energy* **114**, 337–351.
- Aparna, S.G. and D’Souza, S. and Arjun, N. (2018), ‘Prediction of daily sea surface temperature using artificial neural
networks’, *International Journal of Remote Sensing and Remote Sensing Letters* **39**, 4214–4231.
- Aquaret (2020).
URL: <http://www.aquaret.com>
- 1265 Arrambidea, I., Zubiaa, I. and Madariagab, A. (2019), ‘Critical review of offshore wind turbine energy production
and site potential assessment’, *Electrical Power Systems Research* **167**, 39–47.
- Association, I. H. (2016), ‘Technology case study: Sihwa lake tidal power station’.
URL: <https://www.hydropower.org/blog/technology-case-study-sihwa-lake-tidal-power-station>
- Babarit, A. (2017), *Ocean Wave Energy Conversion: Resource, Technologies and Performance*, ISTE Press - Elsevier.

- 1270 Babarit, A., Hals, J., Muliawan, M., Kurniawan, a., Moan, T. and Krokstad, J. (2012), ‘Numerical benchmarking study of a selection of wave energy converters’, *Renewable Energy* **41**, 44–63.
URL: <http://linkinghub.elsevier.com/retrieve/pii/S0960148111005672>
- Badger, M., Pena Diaz, A., Bredesen, R., Berge, E., Hahmann, A., Badger, J., Karagali, I., Hasager, C. and Mikkelsen, T. (2012), Bringing satellite winds to hub-height, *in* ‘Proceedings of EWEA 2012 - European Wind
1275 Energy Conference Exhibition’, European Wind Energy Association (EWEA). EWEC 2012 - European Wind Energy Conference amp; Exhibition, EWEC 2012 ; Conference date: 16-04-2012 Through 19-04-2012.
URL: <http://events.ewea.org/annual2012/>
- Badger, M., Peña, A., Hahmann, A. N., Mouche, A. A. and Hasager, C. B. (01 Apr. 2016), ‘Extrapolating satellite winds to turbine operating heights’, *Journal of Applied Meteorology and Climatology* **55**(4), 975 – 991.
1280 **URL:** <https://journals.ametsoc.org/view/journals/apme/55/4/jamc-d-15-0197.1.xml>
- Bae, Y. H., Kim, K. O. and Choi, B. H. (2010), ‘Lake Sihwa tidal power plant project’, *Ocean Engineering* **37**(5-6), 454–463.
URL: <http://linkinghub.elsevier.com/retrieve/pii/S0029801810000235>
- Bahaj, A. S. and Myers, L. E. (2003), ‘Fundamentals applicable to the utilisation of marine current turbines for
1285 energy production’, *Renewable Energy* **28**(14), 2205–2211.
- Barlow, E., Öztürk, D. T., Revie, M., Boulougouris, E., Day, A. H. and Akartunali, K. (2015), ‘Exploring the impact of innovative developments to the installation process for an offshore wind farm’, *Ocean Engineering* **109**, 623–634.
- Barre, H., Duesmann, B. and Kerr, Y. (2008), ‘Smos: The mission and the system’, *IEEE Transactions on Geoscience and Remote Sensing* **46**, 587–593.
- 1290 Basedow, S. L., McKee, D., Lefering, I., Gislason, A., Daase, M., Trudnowska, E., Egeland, E. S., Choquet, M. and Falk-Petersen, S. (2019), ‘Remote sensing of zooplankton swarms’, *Scientific reports* **9**(1), 1–10.
- Bessa, R., Möhrlen, C., Fundel, V., Siefert, M., Browell, J., Haglund El Gaidi, S., Hodge, B.-M., Cali, U. and Kariniotakis, G. (2017), ‘Towards improved understanding of the applicability of uncertainty forecasts in the electric power industry’, *Energies* **10**(9).
- 1295 Bidlot, J. et al. (2002), ‘Intercomparison of the performance of operational ocean wave forecasting systems with buoy data’, *Weather and Forecasting* **17**, 287–310.
- Blanc, P., Remund, J. and Vallance, L. (2017), Short-term solar power forecasting based on satellite images, *in* ‘Renewable Energy Forecasting’, Elsevier, pp. 179–198.
- Bloise Thomaz, T., Crooks, D., Medina-Lopez, E., van Velzen, L., Jeffrey, H., Lopez Mendia, J., Rodriguez Arias, R.
1300 and Ruiz Minguela, P. (2019), ‘Oamp;m models for ocean energy converters: Calibrating through real sea data’, *Energies* **12**(13).
URL: <https://www.mdpi.com/1996-1073/12/13/2475>
- Borsche, M., K.-W. A. and Kaspar, F. (2016), ‘Wind speed variability between 10 and 116 m height from the regional reanalysis COSMO-REA6 compared to wind mast measurements over Northern Germany and the Netherlands.’,

- 1305 *Adv. Sci. Res.* **13**, 151–161.
- Borthwick, A. G. (2016), ‘Marine Renewable Energy Seascape’, *Engineering* **2**(1), 69–78.
URL: <http://dx.doi.org/10.1016/J.ENG.2016.01.011>
- Bouidière, E., Maisondieu, C., Ardhuin, F., Accensi, M., Pineau-Guillou, L. and Lepasqueur, J. (2013), ‘A suitable metocean hindcast database for the design of Marine energy converters’, *International Journal of Marine Energy*
1310 **3-4**, 40–52.
- Bouty, C., Schafhirt, S., Ziegler, S. and Muskulus, M. (2017), ‘Lifetime extension for large offshore wind farms: Is it enough to reassess fatigue for selected design positions?’, *Energy Procedia* **137**, 523–530.
- Browell, J., Dinwoodie, I. and McMillan, D. (2016), ‘Forecasting for day-ahead offshore maintenance scheduling under uncertainty’.
- 1315 Burgess, M. G., Clemence, M., McDermott, G. R., Costello, C. and Gaines, S. D. (2018), ‘Five rules for pragmatic blue growth’, *Marine Policy* **87**, 331–339.
- Campos-Guzmán, V., García-Cáscales, M. S., Espinosa, N. and Urbina, A. (2019), ‘Life cycle analysis with multi-criteria decision making: A review of approaches for the sustainability evaluation of renewable energy technologies’, *Renewable and Sustainable Energy Reviews* **104**, 343–366.
- 1320 Cannon, D., Brayshaw, D., Methven, J. and Drew, D. (2017), ‘Determining the bounds of skilful forecast range for probabilistic prediction of system-wide wind power generation’, *Meteorologische Zeitschrift* **26**(3), 239–252.
URL: <http://dx.doi.org/10.1127/metz/2016/0751>
- Charlier, R. H. and Finkl, C. W. (2009), *Ocean energy: Tide and tidal power*, Springer Berlin Heidelberg.
- Chen, S. and Hu, C. (2017), ‘Estimating sea surface salinity in the northern gulf of mexico from satellite ocean color
1325 measurements’, *Remote Sensing of Environment* **201**, 115 – 132.
URL: <http://www.sciencedirect.com/science/article/pii/S0034425717304169>
- Commission, I. E. (2015), PD IEC/TS 62600-201:2015 BSI Standards Publication Marine energy - Wave, tidal and other water current converters energy converters – Part 201: Tidal energy resource assessment and characterization, Technical report.
- 1330 Copernicus (2020), ‘Copernicus, Europe’s Eyes of Earth’.
URL: <https://www.copernicus.eu/en>
- Cradden, L., Kalogeri, C., Martinez Barrios, I., Galanis, G., Ingram, D. and G., K. (2016), ‘Multi-criteria site selection for offshore renewable energy platforms’, *Renewable Energy* **87**, 791–806.
- Cubaynes, H. C., Fretwell, P. T., Bamford, C., Gerrish, L. and Jackson, J. A. (2019), ‘Whales from space: four
1335 mysticete species described using new vhr satellite imagery’, *Marine Mammal Science* **35**(2), 466–491.
- De Dominicis, M., Wolf, J. and O’Hara Murray, R. (2018), ‘Comparative effects of climate change and tidal stream energy extraction in a shelf sea’, *Journal of Geophysical Research: Oceans* **123**(7), 5041–5067.
- de León, S. and others. (2018), ‘Performance of wavewatch-iii and swan models in the north sea’, *ASME 2018 37th International Conference on Ocean, Offshore and Arctic Engineering, American Society of Mechanical Engineers*

- Delgado-Torres, A. M., García-Rodríguez, L. and Jiménez del Moral, M. (2020), ‘Preliminary assessment of innovative seawater reverse osmosis (swro) desalination powered by a hybrid solar photovoltaic (pv) - tidal range energy system’, *Desalination* **477**, 114247.
URL: <http://www.sciencedirect.com/science/article/pii/S0011916419313529>
- 1345 Draycott, S., Sellar, B., Davey, T., Noble, D. R., Venugopal, V. and Ingram, D. M. (2019), ‘Capture and Simulation of the Ocean Environment for Offshore Renewable Energy’, *Renewable and Sustainable Energy Reviews* **104**(September 2018), 15–29.
URL: <https://doi.org/10.1016/j.rser.2019.01.011>
- Drew, D. R., Cannon, D. J., Barlow, J. F., Coker, P. J. and Frame, T. H. (2017), ‘The importance of forecasting regional wind power ramping: A case study for the uk’, *Renewable Energy* **114**, 1201 – 1208.
URL: <http://www.sciencedirect.com/science/article/pii/S0960148117306973>
- 1350 DTU (2020), ‘DTU Wind Energy’.
URL: <https://satwinds.windenergy.dtu.dk>
- EMODNET (2020), ‘EMODNET’.
URL: <https://www.emodnet.eu/>
- 1355 European Space Agency (2019), ‘Sentinel online technical guides: Sentinel-1 sar’.
URL: <https://earth.esa.int/web/sentinel/technical-guides/sentinel-1-sar>
- European Space Agency (2020a), ‘CEOS Database’.
URL: <http://database.eohandbook.com/database/missiontable.aspx>
- 1360 European Space Agency (2020b), ‘Sentinel Application Platform’.
URL: <https://step.esa.int/main/toolboxes/snap/>
- Eyre, J. R., English, S. J. and Forsythe, M. (2019), ‘Assimilation of satellite data in numerical weather prediction. part i: The early years’, *Quarterly Journal of the Royal Meteorological Society* **146**(726), 49–68.
- Fischer, T. B. (2019), ‘Editorial—evolution, revolution, climate change and current eia’.
- 1365 Garcia-Gorritz, E. and Garcia-Sanchez, J. (2007), ‘Prediction of sea surface temperatures in the western mediterranean sea by neural networks using satellite observations’, *Geophysical Research Letters* **34**.
- Geiger, E., Grossi, M., Trembanis, A., Kohut, J. and Oliver, M. (2013), ‘Satellite-derived coastal ocean and estuarine salinity in the mid-atlantic’, *Continental Shelf Research* **63**, S235–S242.
- Geyman, E. C. and Maloof, A. C. (2020), ‘Deriving tidal structure from satellite image time series’, *Earth and Space Science* **7**(2), e2019EA000958. e2019EA000958 10.1029/2019EA000958.
URL: <https://agupubs.onlinelibrary.wiley.com/doi/abs/10.1029/2019EA000958>
- 1370 Gilbert, C., Browell, J. and McMillan, D. (2020), ‘Leveraging turbine-level data for improved probabilistic wind power forecasting’, *IEEE Transactions on Sustainable Energy* **11**(3), 1152–1160.
- Goddijn-Murphy, L., Martín Míguez, B., McIlvenny, J. and Gleizon, P. (2015), ‘Wave energy resource assessment

- 1375 with altika satellite altimetry: A case study at a wave energy site', *Geophysical Research Letters* **42**(13), 5452–5459.
- URL:** <https://agupubs.onlinelibrary.wiley.com/doi/abs/10.1002/2015GL064490>
- Gonzalez, A. and Enríquez-de Salamanca, Á. (2018), 'Spatial multi-criteria analysis in environmental assessment: a review and reflection on benefits and limitations', *Journal of Environmental Assessment Policy and Management* 1380 **20**(03), 1840001.
- González, A., Gleeson, J. and McCarthy, E. (2019), 'Designing and developing a web tool to support strategic environmental assessment', *Environmental Modelling & Software* **111**, 472–482.
- Gonzalez, E., Nanos, E. M., Seyr, H., Valdecabres, L., Yur, N. Y., Smolkae, U., Muskulus, M. and Meleroa, J. J. (2017), 'Key performance indicators for wind farm operation and maintenance', *Energy Procedia* **137**, 559–570.
- 1385 Google (2020), 'Google Earth Engine'.
- URL:** <https://earthengine.google.com/>
- Gregg, W., Patt, F. and Woodward, R. (1997), 'Development of a Simulated Data Set for the SeaWiFS Mission', *IEEE Transactions on Geoscience and Remote Sensing* **35**, 421–435.
- URL:** <https://oceancolor.gsfc.nasa.gov/SeaWiFS>
- Group, L. C. I. C. (2012), 'Technology innovation needs assessment (tina). marine energy summary report', *UK Government* .
- URL:** https://assets.publishing.service.gov.uk/government/uploads/system/uploads/attachment_data/file/593459/Technology_innovation_needs_assessment_tina_marine_energy_summary_report.pdf
- 1390 Guillou, N., Lavidas, G. and Chapalain, G. (2020), 'Wave energy resource assessment for exploitation—a review', *Journal of Marine Science and Engineering* **8**(9).
- URL:** <https://www.mdpi.com/2077-1312/8/9/705>
- Gundegjerde, C. et al. (2015), 'A stochastic fleet size and mix model for maintenance operations at offshore wind farms', *Transportation Research Part C: Emerging Technologies* **52**, 74–92.
- 1395 Hannon, M., van Diemen, R. and Skea, J. (2017), *Examining the Effectiveness of Support for UK Wave Energy Innovation since 2000: Lost at Sea or a New Wave of Innovation?*, University of Strathclyde.
- Harcourt, F., Angeloudis, A. and Piggott, M. D. (2019), 'Utilising the flexible generation potential of tidal range power plants to optimise economic value', *Applied Energy* **237**, 873 – 884.
- URL:** <http://www.sciencedirect.com/science/article/pii/S0306261918319093>
- 1400 Hasager, C. B. (2014), 'Offshore winds mapped from satellite remote sensing', *WIREs Energy and Environment* **3**(6), 594–603.
- URL:** <https://onlinelibrary.wiley.com/doi/abs/10.1002/wene.123>
- Hasager, C. B., Mouche, A., Badger, M., Bingöl, F., Karagali, I., Driesenaar, T., Stoffelen, A., Peña, A. and Longépé, N. (2015), 'Offshore wind climatology based on synergetic use of envisat asar, ascat and quikscat', *Remote Sensing of Environment* **156**, 247–263.
- 1405 **URL:** <https://www.sciencedirect.com/science/article/pii/S0034425714003848>

- Hasager, C. B., Rasmussen, L., Peña, A., Jensen, L. E. and Réthoré, P.-E. (2013), ‘Wind farm wake: The horns rev photo case’, *Energies* **6**(2), 696–716.
- Hasselmann, K., Hasselmann, S., Bauer, E., Janssen, P. A., Komen, G. J., Bertotti, L., Lionello, P., Guillaume, A.,
 1410 Cardone, V. C., Greenwood, J. A., Reistad, M., Zambresky, L. and Ewing, J. A. (1988), ‘The WAM model - a third generation ocean wave prediction model.’, *Journal of Physical Oceanography* **18**(December), 1775–1810.
- Hawker, G. and McMillan, D. (2015), ‘The impact of maintenance contract arrangements on the yield of offshore wind power plants’, *Proceedings of the Institution of Mechanical Engineers Part O Journal of Risk and Reliability* **229**(5).
- 1415 Hendry, C. (2016), The role of tidal lagoons, Technical Report December.
URL: <https://hendryreview.wordpress.com/>
- Hersbach, H. et al. (2018), ‘Operational global reanalysis: progress, future directions and synergies with NWP’, *ECMWF ERA Report Series 27*.
- Holthuijsen, L. (2010), ‘Waves in oceanic and coastal waters’, *Cambridge university press* **3**.
- 1420 Hou, P., Zhu, J., Ma, K., Yang, G., Hu, W. and Z., C. (2019), ‘A review of offshore wind farm layout optimization and electrical system design methods’, *J. Mod. Power Syst. Clean Energy* **7**, 975–986.
- Howell, G. L. (1998), ‘Shallow water directional wave gages using short baseline pressure arrays’, *Coastal Engineering* **35**(1-2), 85–102.
- Huizeng, L., Qingquan, L., Tiezhu, S., Shuibo, H., Guofeng, W., Qiming and Z. (2017), ‘Application of sentinel 2 msi
 1425 images to retrieve suspended particulate matter concentrations in poyang lake’, *Remote Sensing* **9**, **761**, 1–19.
- International Electrotechnical Commission (2015), ‘Marine energy – Wave, tidal and other water current converters – Part 101: Wave energy resource assessment and characterization (IEC TS 62600-101:2015)’.
URL: <https://webstore.iec.ch/publication/22099>
- International Electrotechnical Commission (2019), ‘Marine energy - Wave, tidal and other water current converters
 1430 - Part 2: Marine energy systems - Design requirements (IEC TS 62600-2:2019)’.
URL: <https://webstore.iec.ch/publication/62399>
- International Renewable Energy Agency (2019), ‘Future of wind: deployment, investment, technology, grid integration and socio-economic aspects’, *White paper*.
- Jha-Thakur, U. and Fischer, T. B. (2016), ‘25 years of the uk eia system: Strengths, weaknesses, opportunities and
 1435 threats’, *Environmental Impact Assessment Review* **61**, 19–26.
- Joseph, A. (2013), *Measuring Ocean Currents: Tools, Technologies, and Data*, Elsevier Inc.
- Khare, V., Khare, C., Nema, S. and Baredar, P. (2019), *Tidal Energy Systems*, first edn, Elsevier, Amsterdam.
- Lacal-Arántegua, R., Yustab, J. M. and Domínguez-Navarro, J. A. (2018), ‘Offshore wind installation: Analysing the evidence behind improvements in installation time’, *Renewable and Sustainable Energy Reviews* **92**, 133–146.
- 1440 Laloyaux, P., de Boisseson, E., Balmaseda, M., Bidlot, J., Broennimann, S., Buizza, R., Dalhgren, P., Dee, D., Haimberger, L., Hersbach, H., Kosaka, Y., Martin, M., Poli, P., Rayner, N., Rustemeier, E. and Schepers, D.

- (2018), ‘CERA-20C: A Coupled Reanalysis of the Twentieth Century’, *Journal of Advances in Modeling Earth Systems* **10**, 1172–1195.
- Laws, N. D. and Epps, B. P. (2016), ‘Hydrokinetic energy conversion: Technology, research, and outlook’, *Renewable and Sustainable Energy Reviews* **57**, 1245–1259.
- Le Vine, D., Lagerloef, G., Ral Colomb, F., Yueh, S. and Pellerano, F. (2007), ‘Aquarius: An Instrument to Monitor Sea Surface Salinity From Space’, *IEEE Transactions on Geoscience and Remote Sensing* **45**, 587–593.
URL: https://www.nasa.gov/mission_pages/aquarius/overview
- Li, G., Weiss, G., Mueller, M., Townley, S. and Belmont, M. (2012), ‘Wave energy converter control by wave prediction and dynamic programming’, *Renewable Energy* **48**, 392–403.
- LiVecchi, A., Copping, A., Jenne, D., Gorton, A., Preus, R., Gill, G., Robichaud, R., Green, R., Geerlofs, S., Gore, S., Hume, D., McShane, W., Schmaus, C. and Spence, H. (2019), Powering the Blue Economy and Exploring Opportunities for Marine Renewable Energy in Maritime Markets, Technical report, U.S. Department of Energy, Office of Energy Efficiency and Renewable Energy, Washington, D.C.
- Marghany, M., Hashim, M. and Cracknell, A. (2010), ‘Modelling sea surface salinity from modis satellite data’, *Proceedings of the International Conference on Computational Science and its Applications, Part I* pp. 545–556.
- McLean, N. D., Holland, M. A., Maciver, R. D. and Bannon, E. B. (2019), Site selection for scaled open water testing of a wave energy converter, in ‘Proceedings of the 13th European Wave and Tidal Energy Conference’, Naples, Italy.
- Medina-Lopez, E. (2020), ‘Machine Learning and the End of Atmospheric Corrections: A Comparison between High-Resolution Sea Surface Salinity in Coastal Areas from Top and Bottom of Atmosphere Sentinel-2 Imagery.’, *Remote Sensing* **12**, 2924.
URL: <https://doi.org/10.3390/rs12182924>
- Medina-Lopez, E. and Urena-Fuentes, L. (2019), ‘High-Resolution Sea Surface Temperature and Salinity in Coastal Areas Worldwide from Raw Satellite Data.’, *Remote Sensing* **11**.
- Mejia-Olivares, C. J., Haigh, I. D., Angeloudis, A., Lewis, M. J. and Neill, S. P. (2020), ‘Tidal range energy resource assessment of the gulf of california, mexico’, *Renewable Energy* .
- Mendoza, E., Lithgow, D., Flores, P., Felix, A., Simas, T. and Silva, R. (2019), ‘A framework to evaluate the environmental impact of ocean energy devices’, *Renewable and Sustainable Energy Reviews* **112**, 440–449.
- Moufaddal, W. M. (2005), ‘Use of satellite imagery as environmental impact assessment tool: a case study from the nw egyptian red sea coastal zone’, *Environmental Monitoring and Assessment* **107**(1-3), 427–452.
- Muller-Karger, F. E., Hestir, E., Ade, C., Turpie, K., Roberts, D. A., Siegel, D., Miller, R. J., Humm, D., Izenberg, N., Keller, M. et al. (2018), ‘Satellite sensor requirements for monitoring essential biodiversity variables of coastal ecosystems’, *Ecological applications* **28**(3), 749–760.
- Muskulus, M. and Schafhirt, S. (2015), ‘Reliability-based design of wind turbine support structures’, *Symposium on Reliability of Engineering Systems* .

- NASA (2020), ‘Sputnik’.
- 1475 **URL:** <https://history.nasa.gov/sputnik/>
- Neill, S. P., Angeloudis, A., Robins, P. E., Walkington, I., Ward, S. L., Masters, I., Lewis, M. J., Piano, M., Avdis, A., Piggott, M. D., Aggidis, G., Evans, P., Adcock, T. A., Židonis, A., Ahmadian, R. and Falconer, R. (2018), ‘Tidal range energy resource and optimization – past perspectives and future challenges’, *Renewable Energy* pp. –.
- URL:** <https://www.sciencedirect.com/science/article/pii/S0960148118305263>
- 1480 Nova Innovation (2020), ‘Nova Innovation’.
- URL:** <https://www.novainnovation.com/>
- OES Annual Report - 2019 (2019), Technical Report December.
- URL:** <https://www.etipocean.eu/assets/Uploads/oes-annual-report-2019.pdf>
- Olmedo, E., Taupier-Letage, I., Turiel, A. and Alvera-Azcárate, A. (2018), ‘Improving smos sea surface salinity in
- 1485 the western mediterranean sea through multivariate and multifractal analysis’, *Remote Sensing* **10**.
- Orbital Marine (2020), ‘SR2000’.
- URL:** <https://orbitalmarine.com/technology-development/catching-the-tide/sr2000>
- Orbital Micro Systems (2020), ‘OMS’.
- URL:** <https://www.orbitalmicro.com/>
- 1490 OREC (2020), ‘Guide to an offshore wind farm’.
- URL:** <https://guidetoanoffshorewindfarm.com/offshore-wind-history>
- Ouro, P., Runge, S., Luo, Q. and Stoesser, T. (2019), ‘Three-dimensionality of the wake recovery behind a vertical axis turbine’, *Renewable Energy* **133**, 1066–1077.
- URL:** <https://www.sciencedirect.com/science/article/pii/S096014811831317X>
- 1495 O’Connell, R., de Montera, L., Peters, J. and Horion, S. (2020), ‘An updated assessment of ireland’s wave energy resource using satellite data assimilation and a revised wave period ratio’, *Renewable Energy* **160**, 1431–1444.
- Parkinson, C. (2003), ‘Aqua: an Earth-Observing Satellite mission to examine water and other climate variables’, *IEEE Transactions on Geoscience and Remote Sensing* **41**, 173–183.
- URL:** <https://oceancolor.gsfc.nasa.gov/data/aqua/>
- 1500 Patil, A., Annachhatre, A. and Tripathi, N. (2002), ‘Comparison of conventional and geo-spatial eia: a shrimp farming case study’, *Environmental impact assessment review* **22**(4), 361–375.
- Patil, K. and Deo, M. (2016), ‘Prediction of sea surface temperatures by combining numerical and neural techniques’, *Journal of Atmospheric and Oceanic Technology* **33**, 1715–1726.
- Pecher, A. and Kofoed, J. P., eds (2017), *Handbook of Ocean Wave Energy*, Springer Open.
- 1505 **URL:** <http://link.springer.com/openurl?genre=book&isbn=978-3-319-39889-1>
- Pennock, S., Bharathi, N. R. K., Crooks, D., Jeffrey, H. and Möller, P. (2019), ‘Offsetting of wave and wind resource and resultant economic benefits: a gb case study’, *EWTEC 2019*.
- Perignon, Y. (2017), ‘Assessing accuracy in the estimation of spectral content in wave energy resource on the French

- Atlantic test site SEMREV’, *Renewable Energy* **114**, 145–153.
- 1510 **URL:** <http://dx.doi.org/10.1016/j.renene.2017.02.086>
- Power Technology (2020).
- URL:** <https://www.power-technology.com/features/full-circle-decommissioning-first-ever-offshore-windfarm/>
- Preissner, J. (1978), ‘The influence of atmosphere on passive radiometric measurements’, *Proceedings of the Symposium on Millimeter and Submillimeter Wave Propagation Circuits: AGARD Conference* **245**, 1–13.
- 1515 Raghukumar, K., Chang, G., Spada, F., Jones, C., Janssen, T. and Gans, A. (2019), ‘Performance Characteristics of “ Spotter”, a Newly Developed Real-Time Wave Measurement Buoy’, *Journal of Atmospheric and Oceanic Technology* **36**(6), 1127–1141.
- Robinson, I. (2010), *Discovering the ocean from space: The unique applications of satellite oceanography*, Springer and Praxis publishing.
- 1520 Romeiser, R., Runge, H., Suchandt, S., Kahle, R., Rossi, C. and Bell, P. S. (2014), ‘Quality assessment of surface current fields from terraSAR-X and TanDEM-X along-track interferometry and doppler centroid analysis’, *IEEE Transactions on Geoscience and Remote Sensing* **52**(5), 2759–2772.
- Ross, D. (1995), *Power from the waves*, Oxford University Press, Oxford ; New York.
- Russell, D. J., Brasseur, S. M., Thompson, D., Hastie, G. D., Janik, V. M., Aarts, G., McClintock, B. T., Matthiopoulos, J., Moss, S. E. and McConnell, B. (2014), ‘Marine mammals trace anthropogenic structures at sea’, *Current Biology* **24**(14), R638–R639.
- 1525 Sadler, B., Senecal, P. et al. (1999), ‘Principles of environmental impact assessment best practice’, *Report prepared for the International Association of Impact Assessment in cooperation with the Institute of Environmental Assessment, UK*.
- 1530 Salter, S. H. (1974), ‘Wave Power’, *Nature* **249**(5459), 720–724.
- Sarker, B. and Faiz, T. (2016), ‘Minimizing maintenance cost for offshore wind turbines following multi-level opportunistic preventive strategy’, *Renewable Energy* **85**, 104–113.
- Saulter, A. (n.d.), ‘Product user manual for the north west shelf wave analysis and forecast products’.
- URL:** <https://resources.marine.copernicus.eu/documents/PUM/CMEMS-NWS-PUM-004-014.pdf>
- 1535 Scottish Government (2020), ‘Scottish Shelf Model’.
- URL:** <http://marine.gov.scot/information/wider-domain-scottish-shelf-mode>
- Sellar, B. G., Wakelam, G., Sutherland, D. R. J., Ingram, D. M. and Venugopal, V. (2018), ‘Characterisation of tidal flows at the european marine energy centre in the absence of ocean waves’, *Energies* **11**(1).
- Sempreviva, A. M., Barthelmie, R. J. and Pryor, S. C. (2008), ‘Review of methodologies for offshore wind resource assessment in european seas’, *Surv Geophys* **29**, 471–497.
- 1540 Sentinel Hub (2020), ‘Sentinel Hub’.
- URL:** <https://www.sentinel-hub.com/>
- Seyr, H. and Muskulus, M. (2019a), ‘Decision support models for operations and maintenance for offshore wind

- farms: a review', *Appl. Sci.* **9** 278.
- 1545 Seyr, H. and Muskulus, M. (2019b), 'Use of markov decision processes in the evaluation of corrective maintenance scheduling policies for offshore wind farms', *Energies* **12**, 2993.
- Shafiee, M., Patriksson, M., Strömberg, A. and Tjernberg, L. B. (2015), 'Optimal redundancy and maintenance strategy decisions for offshore wind power converters', *International Journal of Reliability, Quality and Safety Engineering* **22**, 1530013.
- 1550 SIMEC Atlantis (2020), 'MeyGen'.
URL: <https://simecatlantis.com/projects/meygen/>
- Sinclair, A., Doelle, M. and Gibson, R. (2018), 'Implementing next generation assessment: A case example of a global challenge', *Environmental impact assessment review* **72**, 166–176.
- Spazio, S. and ESA (2020), 'The ceos database', <http://database.eohandbook.com/about.aspx>.
- 1555 Staneva, J. et al. (2017), 'Effects of wave-induced forcing on a circulation model of the north sea', *Ocean Dynamics* **67**, 81–101.
- Suchandt, S. and Runge, H. (2015), 'Ocean surface observations using the tandem-x satellite formation', *IEEE Journal of Selected Topics in Applied Earth Observations and Remote Sensing* **8**(11), 5096–5105.
- Sweeney, C., Bessa, R. J., Browell, J. and Pinson, P. (2019), 'The future of forecasting for renewable energy', *Wiley Interdisciplinary Reviews: Energy and Environment* .
- 1560 Tapoglou, E.F., F. R. M. and Dorrell, R. M. (2020), 'Satellite-based machine learning for sea-state prediction in an offshore windfarm', *Remote Sensing of Environment (under review)* .
- Taylor, J. and Jeon, J. (2018), 'Probabilistic forecasting of wave height for offshore wind turbine maintenance', *European Journal of Operational Research* **267**, 877–890.
- 1565 Thomson, R. E. and Emery, W. J. (2014), *Data Analysis Methods in Physical Oceanography: Third Edition*, Elsevier Inc.
- Tidal range energy resource and optimization – Past perspectives and future challenges* (2018), *Renewable Energy* **127**, 763–778.
- Topham, E., Gonzalez, E., McMillan, D. and Joao, E. (2019), 'Challenges of decommissioning offshore wind farms: Overview of the european experience', *Journal of Physics: Conf. Series* **1222**, 012035.
- 1570 Topham, E. and McMillan, D. (2016), 'Sustainable decommissioning of an offshore wind farm', *Renewable Energy* **102**, 470–480.
- Torres, R. et al. (2012), 'Gmes sentinel-1 mission', *Remote Sensing of Environment* **120**, 9–24.
- Tucker, M. and Pitt, E. (2001), *Waves in Ocean Engineering (Elsevier Ocean Engineering)*, Elsevier.
- 1575 Tweddle, J. F., Gubbins, M. and Scott, B. E. (2018), 'Should phytoplankton be a key consideration for marine management?', *Marine Policy* **97**, 1–9.
- UERRA (2020), 'UERRA'.
URL: <https://www.uerra.eu/>

- UK Govt. (2019), ‘Energy innovation needs assessment sub-theme report: offshore wind’, *Dept. of Business, Energy and Industrial Strategy* .
- 1580 Vagiona, D. G. and Kamilakis, M. (2018), ‘Sustainable site selection for offshore wind farms in the south Aegean - Greece’, *Sustainability* **10**, 749.
- Van Der Molen, J., Ruardij, P. and Greenwood, N. (2016), ‘Potential environmental impact of tidal energy extraction in the pentland firth at large spatial scales: results of a biogeochemical model’, *Biogeosciences* **13**, 2593–2609.
- 1585 van der Molen, J., Smith, H. C., Lepper, P., Limpenny, S. and Rees, J. (2014), ‘Predicting the large-scale consequences of offshore wind turbine array development on a north sea ecosystem’, *Continental shelf research* **85**, 60–72.
- Wang, M., Ullrich, P. and Millstein, D. (2018), ‘Datasets on hub-height wind speed comparisons for wind farms in california’, *Data in Brief* **19**, 214–221.
- URL:** <https://www.sciencedirect.com/science/article/pii/S2352340918305341>
- 1590 Waters, S. and Aggidis, G. (2016a), ‘Tidal range technologies and state of the art in review’, *Renewable and Sustainable Energy Reviews* **59**, 514–529.
- URL:** <https://www.sciencedirect.com/science/article/pii/S136403211501730X>
- Waters, S. and Aggidis, G. (2016b), ‘Tidal range technologies and state of the art in review’.
- Weizeng, S., Zheng, Z., Xiaofeng, L. and Huan, L. (2016), ‘Ocean wave parameters retrieval from sentinel-1 sar imagery’, *Remote Sensing* **8**, **707**, 1–14.
- 1595 Woodhouse, I. (2005), *Introduction to Microwave Remote Sensing*, CRC Press.
- Work, P. A. (2008), ‘Nearshore directional wave measurements by surface-following buoy and acoustic Doppler current profiler’, *Ocean Engineering* **35**(8-9), 727–737.
- Zamani, A. et al. (2008), ‘Learning from data for wind–wave forecasting’, *Ocean Engineering* **35**, 953–962.
- 1600 Zen, S., Hard, E. and Medina-Lopez, E. (2020), ‘The use of satellite products to assess spatial uncertainty and reduce life-time costs of offshore wind farms’, *Cleaner Environmental Systems* **2**, 100008.
- URL:** <https://doi.org/10.1016/j.cesys.2020.100008>
- Zhou, Z., Benbouzid, M., Charpentier, J.-F., Scullier, F. and Tang, T. (2017), ‘Developments in large marine current turbine technologies – a review’, *Renewable and Sustainable Energy Reviews* **71**, 852–858.
- 1605 **URL:** <https://www.sciencedirect.com/science/article/pii/S1364032116311698>
- Ziegler, L., Gonzalez, E., Rubert, T., Smolkaa, U. and Meleroc, J. (2018), ‘Lifetime extension of onshore wind turbines: A review covering germany, spain, denmark, and the uk’, *Renewable and Sustainable Energy Reviews* **82**, 1261–1271.