

**Exhibiting Connections, Connecting Exhibitions:  
Constructing trans-Pacific relationships through museum  
displays in Oceania (2006-2016)**

Volume II

**Alice Christophe**

Dissertation Submitted for the Degree of Doctor of Philosophy  
Sainsbury Research Unit for the Arts of Africa, Oceania & the Americas  
School of Art, Media and American Studies  
University of East Anglia

September 2016

This copy of the thesis has been supplied on condition that anyone who consults it is understood to recognise that its copyright rests with the author and that use of any information derived there from must be in accordance with current UK Copyright Law. In addition, any quotation or extract must include full attribution.

## List of Acronyms

AM	Auckland War Memorial Museum/Tāmaki Paenga Hira
AOT	Across Oceans and Time: Art in the Contemporary Pacific
ASC	Arctic Studies Center
BPBM	Bernice Pauahi Bishop Museum
CAAP	Contemporary Austronesian Art Project
KMFA	Kaohsiung Museum of Fine Arts
LF	Le Folauga: The Past Coming Forward
MAI	Marson Architects Inc.
NTM	National Taiwan Museum (former Viceroy's Office Museum)
PG	Pacific Galleries
PH	Pacific Hall (former Polynesian Hall)
RAA	Ralph Appelbaum and Associates
TCC	Tjibaou Cultural Centre (Centre Culturel Tjibaou)
TGJ	The Great Journey: In Pursuit of the Ancestral Realm
VM	Vaka Moana: The Voyages of the Ancestors
VOM	Viceroy's Office Museum

## List of Figures

### Chapter 2

<b>Figure 2.1</b>	Front Facade, AM, circa 1876-1892. AM archives, C14941	2
<b>Figure 2.2</b>	Main Hall, AM, circa 1885. AM archives, C17018	2
<b>Figure 2.3</b>	Main Hall, AM, early 1880s. AM archives, AM93A89	3
<b>Figure 2.4</b>	Original building, BPBM, 1890-1892. BPBM archives, CA 207	3
<b>Figure 2.5</b>	Entrance Hall, BPBM, 1892-1894. BPBM archives, PHfolder	4
<b>Figure 2.6</b>	Main Room, BPBM, prior to 1894. BPBM Archives, PHfolder	4
<b>Figure 2.7</b>	Main Room, BPBM, prior to 1894. BPBM archives, CA411	5
<b>Figure 2.8</b>	National Taiwan Museum (former VOM), Taipei. Wikipedia, public domain, 2007	5
<b>Figure 2.9</b>	Aboriginal Chamber, VOM, circa 1915. Hsiao, 2009 p53	6
<b>Figure 2.10</b>	Atayal diorama, Aboriginal Chamber, VOM, circa 1915. Hsiao, 2009, p 52	6
<b>Figure 2.11</b>	AM on Princes Street with Ethnological Hall extension, 1917. AM Archives, C23825	7
<b>Figure 2.12</b>	Ethnological Hall, AM, 1894-1897. AM archives, B393	7
<b>Figure 2.13</b>	Ethnological Hall (Maori side), AM, 1894-1897. AM archives, 4693	8
<b>Figure 2.14</b>	Construction of PH, BPBM, 1894. BPBM archives, CA67	9
<b>Figure 2.15</b>	Levels 1 & 2, PH, circa 1900. BPBM archives, A408	9
<b>Figure 2.16</b>	Level 1, Floor plan, Hawaiian Hall Complex, BPBM, circa 1903. BPBM archives, CA203	10
<b>Figure 2.17</b>	Level 2, Floor plan, Hawaiian Hall Complex, BPBM, circa 1903. BPBM archives, CA204	10
<b>Figure 2.18</b>	Newly built Hawaiian Hall, BPBM, circa 1903. BPBM archives, Book 9 p 24	11
<b>Figure 2.19</b>	Floor plan, AM Princes Street after full extension. Wolfe, 2001 p2	11
<b>Figure 2.20</b>	AM 1905 Extension dedicated to Polynesian ethnological material, 1905-1916. AM archives C8688	12
<b>Figure 2.21</b>	Maori Hall, AM, circa 1905-1916. AM archives C42386	12

<b>Figure 2.22</b>	New AM on Observation Hill, 1929. AM archives, C22472	13
<b>Figure 2.23</b>	Pacific Anthropology Hall, AM, circa 1930s. AM archives, C1547	13
<b>Figure 2.24a</b>	Solomon Islands case, AM, circa 1936. AM archives, 19.489	14
<b>Figure 2.24b</b>	Solomon Islands case, AM, circa 1936. AM archives, 19.489	14
<b>Figure 2.24c</b>	Solomon Islands case, AM, circa 1936. AM archives, 19.484	14
<b>Figure 2.25a</b>	Cook Islands case, AM, circa 1936. AM archives, 19.499	15
<b>Figure 2.25b</b>	Cook Islands case, AM, circa 1936. AM archives, 19.493	15
<b>Figure 2.25c</b>	Cook Islands case, AM, circa 1936. AM archives, 19.495	15

### **Chapter 3**

<b>Figure 3.1</b>	Initial floor plan, VM, by Story Inc. Exhibition interpretative document, AM unclassified archives, 2005	17
<b>Figure 3.2</b>	Floor plan, VM, by Rick Pearson & Associates Architects. AM unclassified digital archives, 18 September 2006	18
<b>Figure 3.3</b>	Floor plan, VM. Graphic chart, AM unclassified digital archives, 2006	19
<b>Figure 3.4</b>	Colour code per exhibition section, VM. Graphic chart, AM unclassified exhibition archives, 2006	19
<b>Figure 3.5</b>	Entrance of VM with visual of the Hōkūle'a. AM digital photo archives, May 2007	20
<b>Figure 3.6</b>	Section 2, Island People, VM. AM digital photo archives, January 2007	20
<b>Figure 3.7</b>	Section 3, Search for Origins, VM. AM digital photo archives, January 2007	21
<b>Figure 3.8</b>	Sections 4 and 5, Navigation and Vaka, VM. AM digital photo archives, January 2007	21
<b>Figure 3.9</b>	Celestial map in Section 4, Navigation, VM. AM digital photo archives, January 2007	22
<b>Figure 3.10</b>	Section 6, Landfall, VM. AM digital photo archives, January 2007	22
<b>Figure 3.11</b>	Section 7, Two Worlds, VM. AM digital photo archives, January 2007	23
<b>Figure 3.12</b>	Section 8, Renaissance, VM. AM digital photo archives, January 2007	23
<b>Figure 3.13</b>	Room 1, LF Auckland. AM digital photo archives, 2007	24



<b>Figure 3.14</b>	Room 1, LF Auckland. AM digital photo archives, 2007	24
<b>Figure 3.15</b>	Room 1, LF Auckland. AM digital photo archives, 2007	25
<b>Figure 3.16</b>	Room 2, LF Auckland. AM digital photo archives, 2007	25
<b>Figure 3.17</b>	Room 2, LF Auckland. AM digital photo archives, 2007	26
<b>Figure 3.18</b>	Room 2, LF Auckland. AM digital photo archives, 2007	26
<b>Figure 3.19</b>	Floor plans, Room 101, LF Taiwan. KMFA archives, 31 October 2008	27
<b>Figure 3.20</b>	Floor plans, Room 102, LF Taiwan. KMFA archives, 31 October 2008	28
<b>Figure 3.21</b>	Room 101, LF Taiwan. KMFA digital archives, 2008-2009	29
<b>Figure 3.22</b>	Room 101, LF Taiwan. KMFA digital archives, 2008-2009	29
<b>Figure 3.23</b>	Room 101, LF Taiwan. KMFA digital archives, 2008-2009	30
<b>Figure 3.24</b>	Room 102, LF Taiwan. KMFA digital archives, 2008-2009	30
<b>Figure 3.25</b>	Room 102, LF Taiwan. KMFA digital archives, 2008-2009	31
<b>Figure 3.26</b>	Room 102, LF Taiwan. Installation by Leanne Clayton, KMFA digital archives, 2008-2009	31
<b>Figure 3.27</b>	Floor plan, AOT. KMFA archives, 2007	32
<b>Figure 3.28</b>	Comparative display layout, Room 202, “Where do we come from?”, AOT. KMFA archives, 2007	33
<b>Figure 3.29</b>	Introduction room, floor 2, AOT. KMFA digital archives, January 2008	34
<b>Figure 3.30</b>	Room 201, AOT. KMFA digital archives, January 2008	34
<b>Figure 3.31</b>	Room, 201, AOT. KMFA digital archives, January 2008	35
<b>Figure 3.32</b>	Room, 201, AOT. KMFA digital archives, January 2008	35
<b>Figure 3.33</b>	Room, 202, AOT. KMFA digital archives, January 2008	36
<b>Figure 3.34</b>	Room, 202, AOT. KMFA digital archives, January 2008	36
<b>Figure 3.35</b>	Room, 203, AOT. KMFA digital archives, January 2008	37
<b>Figure 3.36</b>	Room, 203, AOT. KMFA digital archives, January 2008	37
<b>Figure 3.37</b>	Floor plan, prior to Jim Vivieaere’s suggestions, TGJ. KMFA archives, August 2009	38
<b>Figure 3.38</b>	Former Sculpture Hall, entrance hall of TGJ showing a floor map of Austronesia, TGJ. KMFA digital archives, 2009	39
<b>Figure 3.39</b>	Introduction, TGJ. KMFA digital archives, 2009	39
<b>Figure 3.40</b>	Room 104, local artists, Sound of Water by Ruby Swana (2009), TGJ. KMFA digital archives, 2009	40
<b>Figure 3.41</b>	Room 104, local artists, TGJ. KMFA digital archives, 2009	40
<b>Figure 3.42</b>	Room 104, local artists, TGJ. KMFA digital archives, 2009	41
<b>Figure 3.43</b>	Sakuliu Pavavalung’s workshop completing the carved totem poles for <i>Three Mountains on Our Mind</i> , TGJ. KMFA digital archives, September 2009	41

<b>Figure 3.44</b>	Room 105, foreign artists, TGJ. KMFA digital archives, 2009	42
<b>Figure 3.45</b>	Room 105, foreign artists, TGJ. KMFA digital archives, 2009	42
<b>Figure 3.46</b>	Room 105, foreign artists, TGJ. KMFA digital archives, 2009	43
<b>Figure 3.47</b>	Room 105, foreign artists, TGJ. KMFA digital archives, 2009	43
<b>Figure 3.48</b>	Room 105, foreign artists, TGJ. KMFA digital archives, 2009	44

## Chapter 4

<b>Figure 4.1</b>	Suggested floor plan, PH, BPBM. Conceptual plan RAA, 20 April 2006: 50	46
<b>Figure 4.2</b>	Suggested display, PH, BPBM. Conceptual plan RAA, 20 April 2006: 53	46
<b>Figure 4.3</b>	Floor plan PH1, BPBM. 31 March 2010	47
<b>Figure 4.4</b>	Floor plan PH2, BPBM. 31 March 2010	48
<b>Figure 4.5</b>	Floor plan PH1, RAA Graphic Typologies, 16 February 2012	49
<b>Figure 4.6</b>	Floor plan PH2, RAA Graphic Typologies, 16 February 2012	50
<b>Figure 4.7</b>	Internal three-pole structure, PH. Photograph by Alice Christophe, August 2013	51
<b>Figure 4.8</b>	Mock-up canoe case with Susan Smolinski (L), Dave Kemble (C), and Richard Hards (R). Photograph by Alice Christophe, September 2013	51
<b>Figure 4.9</b>	Marques Hanalei Marzan calling the delegation in the Hall, Grand Unveiling, PH. Photograph by Alice Christophe, 21 September 2013	52
<b>Figure 4.10</b>	Programmes, Grand Unveiling, PH. 21 September 2013	52
<b>Figure 4.11</b>	General view post-opening PH. Photograph by Alice Christophe, September 2013	53
<b>Figure 4.12</b>	PH1-01 Tiled entrance. Photograph by Alice Christophe, September 2013	54
<b>Figure 4.13</b>	PH2-01 <i>An Extraordinary Man</i> , case dedicated to Te Rangi Hiroa/Sir Peter Henry Buck. Photograph by Alice Christophe, September 2013	54
<b>Figure 4.14</b>	PH2 General view. Photograph by Alice Christophe, September 2013	55

<b>Figure 4.15</b>	PH2-E02 <i>Settlement of Oceania</i> . Photograph by Alice Christophe, September 2013	55
<b>Figure 4.16</b>	PH2-N01 <i>How We Know</i> . Photograph by Alice Christophe, September 2013	56
<b>Figure 4.17</b>	PH2 General view north wall, dedicated to Near Oceania. Photograph by Alice Christophe, September 2013	56
<b>Figure 4.18</b>	PH2-03 <i>Voyaging, Trade and Ancestral Spirits</i> (L), PH2-02 <i>Hunters and Gatherers</i> (R). Photograph by Alice Christophe, September 2013	57
<b>Figure 4.19</b>	PH2-04a <i>First Settlement of Oceania</i> . Photograph by Alice Christophe, September 2013	57
<b>Figure 4.20</b>	PH2-R04L <i>Kuk Swamp and First Contact</i> , the importance of agriculture in Papua New Guinea. Photograph by Alice Christophe, September 2013	58
<b>Figure 4.21</b>	PH2-R04R <i>Genetic Data</i> . Photograph by Alice Christophe, September 2013	58
<b>Figure 4.22</b>	PH2-04b <i>First Settlement of the Pacific Islands</i> . Photograph by Alice Christophe, September 2013	58
<b>Figure 4.23</b>	H2-07, PH2-06, PH2-05 Material from Taiwan. Photograph by Alice Christophe, September 2013	59
<b>Figure 4.24</b>	PH2-06 Contemporary Taiwan indigenous material. Photograph by Alice Christophe, September 2013	59
<b>Figure 4.25</b>	PH2-R05L <i>Lapita Lifeways</i> . Photograph by Alice Christophe, September 2013	60
<b>Figure 4.26</b>	PH2-R05R <i>Lapita Trade</i> . Photograph by Alice Christophe, September 2013	60
<b>Figure 4.27</b>	PH2-10 <i>Hawaiki</i> (L), PH2-09 Fijian ceramics (C), PH2-08 Lapita pottery motifs (R). Photograph by Alice Christophe, September 2013	60
<b>Figure 4.28</b>	PH2-R06L <i>Micronesia</i> . Photograph by Alice Christophe, September 2013	61
<b>Figure 4.29</b>	PH2-10 <i>Hawaiki</i> . Photograph by Alice Christophe, September 2013	61
<b>Figure 4.30</b>	PH2-R06R <i>Tongan Maritime Chieftdom</i> . Photograph by Alice Christophe, September 2013	62
<b>Figure 4.31</b>	PH2-12, PH2-11 Ethnographic material from Fiji, Tonga and Sāmoa, PH2-10 <i>Hawaiki</i> . Photograph by Alice Christophe, September 2013	62
<b>Figure 4.32</b>	PH2-W4, <i>Anu'u Nu'u Ka'ike</i> . Photograph by Alice Christophe, September 2013	63

<b>Figure 4.33</b>	PH2 General view south wall. Photograph by Alice Christophe, September 2013	63
<b>Figure 4.34</b>	PH2-15 <i>Change Through Time</i> (L), PH2-14 <i>Tahitian Barkcloth</i> (C), PH2-13 <i>Eastern Polynesian Chiefs</i> (R). Photograph by Alice Christophe, September 2013	64
<b>Figure 4.35</b>	PH2-15 <i>First settlement of Eastern Polynesia</i> . Photograph by Alice Christophe, September 2013	64
<b>Figure 4.36</b>	PH2-R11L <i>East Polynesian Ornaments</i> . Photograph by Alice Christophe, September 2013	65
<b>Figure 4.37</b>	PH2-R11R <i>East Polynesian Ritual Sites</i> . Photograph by Alice Christophe, September 2013	65
<b>Figure 4.38</b>	PH2-R12L <i>East Polynesian Fishing</i> . Photograph by Alice Christophe, September 2013	65
<b>Figure 4.39</b>	PH2-17 <i>Marquesan Ornamentation</i> (L), PH2-16 <i>Tattooing</i> (C), PH2-15 <i>Society Islands</i> (R). Photograph by Alice Christophe, September 2013	66
<b>Figure 4.40</b>	PH2-18 <i>Settlement of the Marquesas Islands</i> (C), <i>Innovation and Change through Time</i> (R). Photograph by Alice Christophe, September 2013	66
<b>Figure 4.41</b>	PH2-21 Easter Island, New Zealand, and Hawai'i (L), PH2-20 Easter Island (C), PH2-19 <i>Chiefly Cultures</i> (R). Photograph by Alice Christophe, September 2013	67
<b>Figure 4.42</b>	PH2 PH2-21a <i>Settlement of Rapa Nui</i> . Photograph by Alice Christophe, September 2013	67
<b>Figure 4.43</b>	PH2-21b <i>Settlement of Aotearoa</i> . Photograph by Alice Christophe, September 2013	68
<b>Figure 4.44</b>	PH2-21c <i>Settlement of Hawai'i</i> . Photograph by Alice Christophe, September 2013	68
<b>Figure 4.45</b>	PH2-R12R <i>Early Hawai'i</i> . Photograph by Alice Christophe, September 2013	69
<b>Figure 4.46</b>	PH2-R13L <i>Early Hawai'i</i> . Photograph by Alice Christophe, September 2013	69
<b>Figure 4.47</b>	PH2-R13R <i>South American Contact</i> . Photograph by Alice Christophe, September 2013	69
<b>Figure 4.48</b>	PH1 General view. Photograph by Alice Christophe, September 2013	70
<b>Figure 4.49</b>	PH1-02 <i>Vaka, Waka, Va'a, Wa'a – Canoes of the Pacific</i> . Photograph by Alice Christophe, September 2013	70
<b>Figure 4.50</b>	PH1-E01, PH1-N05 <i>Kau Moana – Peoples of the Ocean Deep</i> , PH1-03 Mourning costume (L). Photograph by Alice Christophe, September 2013	71

<b>Figure 4.51</b>	PH1-04E <i>Ancestors</i> . Photograph by Alice Christophe, September 2013	71
<b>Figure 4.52</b>	PH1-04W <i>Gods Are Ancestors</i> . Photograph by Alice Christophe, September 2013	72
<b>Figure 4.53</b>	PH1-05E <i>Fishermen, Innovation and Skill</i> . Photograph by Alice Christophe, September 2013	72
<b>Figure 4.54</b>	PH1-05W <i>A Pacific Fishing Culture</i> . Photograph by Alice Christophe, September 2013	73
<b>Figure 4.55</b>	PH1-06E <i>Food from the Land</i> . Photograph by Alice Christophe, September 2013	73
<b>Figure 4.56</b>	PH1-06W <i>Hunting, Gathering and Gardening in New Guinea</i> . Photograph by Alice Christophe, September 2013	74
<b>Figure 4.57</b>	PH1-07 Treasure case and resource centre. Photograph by Alice Christophe, September 2013	74
<b>Figure 4.58</b>	PH1-09E <i>People</i> . Photograph by Alice Christophe, September 2013	75
<b>Figure 4.59</b>	PH1-09W <i>Ceremonial Dress in Sāmoa</i> . Photograph by Alice Christophe, September 2013	75
<b>Figure 4.60</b>	PH1-10E <i>Community</i> . Photograph by Alice Christophe, September 2013	76
<b>Figure 4.61</b>	PH1-10W <i>Chiefs &amp; Leaders</i> . Photograph by Alice Christophe, September 2013	76
<b>Figure 4.62</b>	PH1-11E <i>Wayfinding from the Ancestors</i> . Photograph by Alice Christophe, September 2013	77
<b>Figure 4.63</b>	PH1-11W <i>The Santa Cruz Islands Trading Network</i> (Lower R). Photograph by Alice Christophe, September 2013	77
<b>Figure 4.64</b>	Marshallese Rebbelib Stick Chart, AM collections. Content Waka Report 2011: 22. Artefact number: 1998.1317	78
<b>Figure 4.65</b>	Bicultural Foundation Te Korahi Māori, AM. <i>Future Museum</i> , 2012: 12	78
<b>Figure 4.66</b>	Front page, Teu Le Vā, The Pacific Dimension, AM. 2013	79

## Chapter 5

<b>Figure 5.1</b>	Cases PH2-04, 05 and 06, Level 2, PH, BPBM. Photograph by Alice Christophe, September 2013	81
<b>Figure 5.2</b>	Replicas displayed in PH PH2-05 & PH2-06, Level 2, PH, BPBM. Photograph by Alice Christophe, September 2013	81
<b>Figure 5.3</b>	Canoe case, layout with map in the background, RAA for PH, 2013	82

<b>Figure 5.4</b>	Canoe case, Level 1, PH. Photograph by Alice Christophe, September 2014	83
<b>Figure 5.5</b>	Canoe typology, Landfall, Vaka Moana. AM archives, January 2007	83
<b>Figure 5.6</b>	General view, Arctic Studies Center, design by RAA in Anchorage, Alaska. Photograph, RAA, 2010	84
<b>Figure 5.7</b>	Pan-Arctic mask display case, Arctic Studies Center, design by RAA in Anchorage, Alaska. Photograph, RAA, 2010	84
<b>Figure 5.8</b>	First layer of red paint applied onto PH's collective mural. Mural making video, Level 1, PH, May 2013	85
<b>Figure 5.9</b>	The kumu painting the last layers of PH's mural. Mural making video, Level 1, PH, May 2013	85
<b>Figure 5.10</b>	Anu'u nu'u ka'ike by Halau Paheona Level 1, PH. Photograph by Alice Christophe, September 2013	86
<b>Figure 5.11</b>	Kanaky by Joseph Poukiou and Jean-Michel Boene, Austronesian Park, KMFA, 2007. Photograph, TCC archives	86
<b>Figure 5.12</b>	Jim Vivieaere weeding the Polynesian triangle in the Austronesian Park, KMFA, 2007. Photograph, KMFA archives	87
<b>Figure 5.13</b>	The artists installing one of the tougo. Landscape by Jim Vivieaere and Michel Tuffery, Austronesian Park, KMFA, 2007. Photograph, KMFA archives	87
<b>Figure 5.14</b>	Landscape by Jim Vivieaere and Michel Tuffery, Austronesian Park, KMFA, 2007. Photograph, KMFA archives	88
<b>Figure 5.15</b>	Landscape by Jim Vivieaere and Michel Tuffery, Austronesian Park, KMFA, 2007. Photograph, KMFA archives	88
<b>Figure 5.16</b>	Jack Gray hongi Marques Hanalei Marzan before starting the performance <i>Te Reinga</i> on the Grand Unveiling day. Photograph by Alice Christophe, 21 September 2013	89
<b>Figure 5.17</b>	Rehearsal of <i>Te Reinga</i> , with Marcus, Kealoha, Moses, Moani, Mickael, Kamalu, Kapaliku, Lissa, Hanalei and Loko. Photograph by Alice Christophe, 18 September 2013	90
<b>Figure 5.18</b>	Rehearsal of <i>Te Reinga</i> , with Hanalei, Kapaliku, Mickael, Kealoha and Moses. Photograph by Alice Christophe, 18 September 2013	90

<b>Figure 5.19</b>	Rehearsal of <i>Te Reinga</i> , rope duet with Marcus Quiniones and Lissa Gendreau. Photograph by Alice Christophe, 18 September 2013	91
<b>Figure 5.20</b>	<i>Te Reinga</i> collective gathering at the lo'i/taro field in Kaneohe. Photograph by Jack Gray, September 2013	92
<b>Figure 5.21</b>	<i>Te Reinga</i> performed for Pacific Hall Grand Unveiling. BPBM archives, 21 September 2013	92

## Chapter 6

<b>Figure 6.1</b>	General view, PH, BPBM. Photography by Alice Christophe, September 2013	94
<b>Figure 6.2</b>	The Pacific Ocean, wooden floor map, PH, BPBM. BPBM archives, PHfolder, 2013	95
<b>Figure 6.3</b>	RAA rendering, PH, BPBM. Visualised concepts, May 2010	96
<b>Figure 6.4</b>	RAA layout, PH floor map, BPBM. BPBM archives, PHfolder, October 2010	97
<b>Figure 6.5</b>	Map of the Pacific displayed in Hawaiian Hall, BPBM. Photography by Alice Christophe, September 2013	98
<b>Figure 6.6</b>	Settlement of Oceania, migration map, PH, BPBM. Photography by Alice Christophe, September 2013	98
<b>Figure 6.7</b>	PH with a map of the Pacific along the west wall, circa 1900. BPBM archives, A408	99
<b>Figure 6.8</b>	<i>Index Chart of the Pacific Ocean</i> . Brigham, 1900: 173	99
<b>Figure 6.9</b>	Map showing Migration of Pacific Peoples, Hawaiian Vestibule, BPBM, August 1954. BPBM archives, Neg.23558	100
<b>Figure 6.10</b>	Spoehr showing the new map of the Pacific by Rockwood, Hawaiian Vestibule, BPBM, August 1954. BPBM archives, book 70:74	100
<b>Figure 6.11</b>	The arrival of Man, Hawaiian Hall, 1955. The Conch Shell, 7 March 1955	101
<b>Figure 6.12</b>	Map of Pacific Ocean Currents, entrance, Hall of Pacific Life, BPBM, 1957. BPBM archives, PHfolder	101
<b>Figure 6.13</b>	Lighting system at the back of the map of Pacific Ocean Currents, Hall of Pacific Life, BPBM, 1957. BPBM archives, PHfolder	102
<b>Figure 6.14</b>	Map of Pacific Ocean Currents, Hall of Pacific Life, BPBM, 1957. BPBM archives, 28849	102
<b>Figure 6.15</b>	Globe in Arts of the South Seas, PH, BPBM, 1967. BPBM archives, PHfolder	103

<b>Figure 6.16</b>	Map of the Pacific in the Hall of Oceanic Navigation, AM, circa 1960. AM archives, B1866	103
<b>Figure 6.17</b>	Map in the Canoe Hall, 1982-1983, AM. AM archives, AM 93A891.7h	104
<b>Figure 6.18</b>	Map in the Canoe Hall, 1982-1983, AM. Richard Wolfe, personal communication	104
<b>Figure 6.19</b>	Map of the Pacific Ocean in <i>Chiefs, Bigmen and Mariners</i> (1980-2011), BPBM. Photography by Betty Tatar	105
<b>Figure 6.20</b>	Map of the Pacific Ocean in <i>Chiefs, Bigmen and Mariners</i> (1980-2011), BPBM. Photography by Betty Tatar	105
<b>Figure 6.21</b>	Pacific mural, Canoe Hall, AM, circa 1990s. AM archives AM 93A891.7h	106
<b>Figure 6.22</b>	Pacific mural (colour), Canoe Hall, AM, circa 1990s. AM archives, K. Pfeiffer (?)	106
<b>Figure 6.23</b>	Map of the Pacific in <i>Pacific Lifeways</i> , AM, circa 1998. AM archives, K. Pfeiffer	107
<b>Figure 6.24</b>	Map of the Pacific in <i>Pacific Lifeways</i> , AM. Photograph by Alice Christophe, 2014	107
<b>Figure 6.25</b>	Map of the Pacific in <i>Pacific Masterpieces</i> , AM, prior to 2014. Photograph by Tanya Wilkinson	108
<b>Figure 6.26</b>	Sketches for the map of the Pacific in Vaka Moana, AM. Design by Pearson & Associates, 2006	108
<b>Figure 6.27</b>	Map of the Pacific in Vaka Moana, Navigation, AM. AM archives, 2007	109
<b>Figure 6.28</b>	Map of the Pacific, educational document, Vaka Moana, AM. AM archives, 2006	109
<b>Figure 6.29</b>	Sketches by Ting Ting Chen, copy of VM's catalogue, KMFA. KMFA archives, 2006-2007	110
<b>Figure 6.30</b>	Original design for the logo of the CAAP, by Ting Ting chen, KMFA. KMFA archives, 2006-2007	110
<b>Figure 6.31</b>	ANU map of the settlement of the Pacific, used at the BPBM and at the KMFA. Reproduced in Bellwood, 2013. BPBM archives, PHfolder	111
<b>Figure 6.32</b>	Map of Austronesia, entrance hall, AOT, KMFA. KMFA archives, 2007	112
<b>Figure 6.33</b>	<i>The Islands of the Pacific</i> , new temporary map for <i>Pacific Masterpieces</i> . Photograph by Alice Christophe, March 2016	112
<b>Figure 6.34</b>	<i>The Origin of Polynesians</i> , new temporary map for the Māori Hall. Photograph by Alice Christophe, March 2016	113



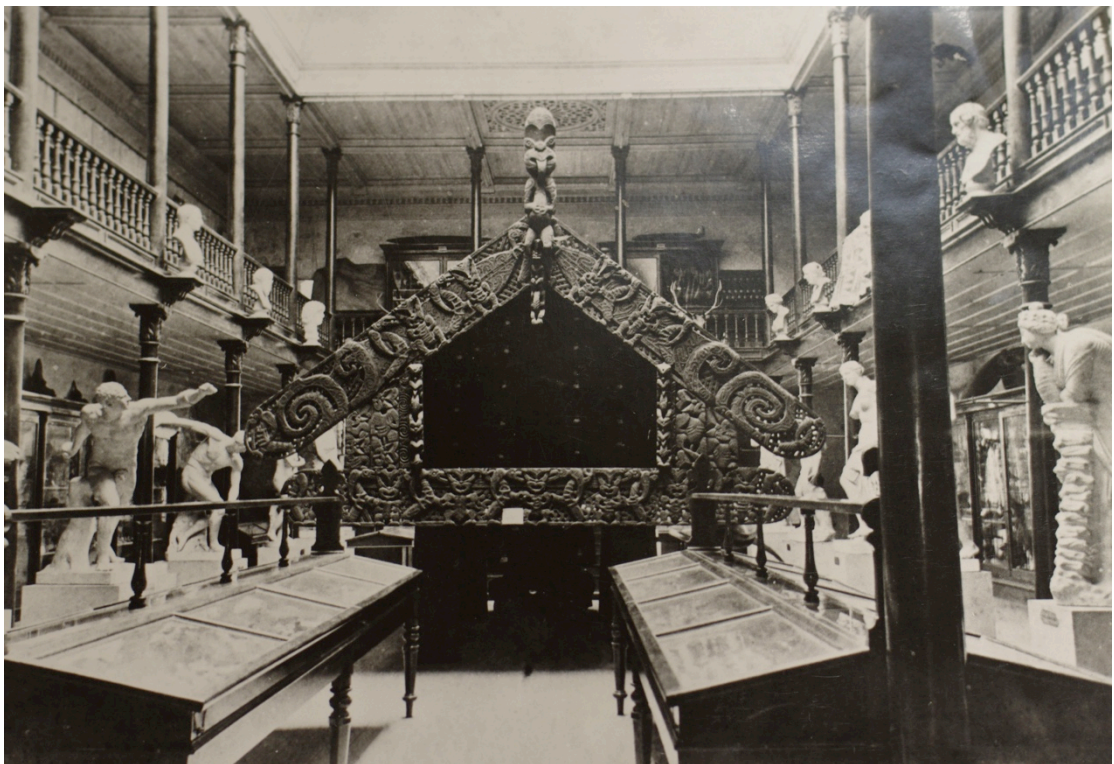
<b>Figure 6.35</b>	<i>Origins of Māori Language</i> , new temporary map for the Māori Hall. Photograph by Alice Christophe, March 2016	113
<b>Figure 6.36</b>	Floor map of Austronesia, TGJ, KMFA. KMFA archives, 2009	114
<b>Figure 6.37</b>	Artists standing on the floor map of Austronesia, TGJ, KMFA. KMFA archives, 2009	114
<b>Figure 6.38</b>	Staff opening, the 'ohana and the map, PH, BPBM. Photograph by Alice Christophe, 19 September 2013	115
<b>Figure 6.39</b>	Jack Gray performs on PH's floor map after the staff opening. Photograph by Alice Christophe, 19 September 2013	115
<b>Figure 6.40</b>	Tava proudly pointing at Tokelau on the Grand Unveiling day, PH, BPBM. Photograph by Alice Christophe, 21 September 2013	116
<b>Figure 6.41</b>	Ernestina, Nina and Salvador, visitors from Rapa Nui reforming the Polynesian triangle, PH, BPBM. FB post, 18 July 2014, courtesy of Mara Mulrooney	116
<b>Figure 6.42</b>	Layout of PH's floor map with panel selected for removal. BPBM archives, 4 April 2014	117
<b>Figure 6.43</b>	Replacement panel with new labelling, by Shayn Allen Marquetry. BPBM archives, 4 April 2014	117
<b>Figure 6.44</b>	Reconstruction of PH's floor map, BPBM. Photography by Dave Kemble, January 2015	118
<b>Figure 6.45</b>	Map after reconstruction with former name tags by Dave Kemble. Dave Kemble, personal communication, 13 March 2015	118

## **Chapter 2:**

# **Genealogical Grounds: Early Display Articulations and Networks**



**Figure 2.1** Front Facade, AM, circa 1876-1892. AM archives, C14941

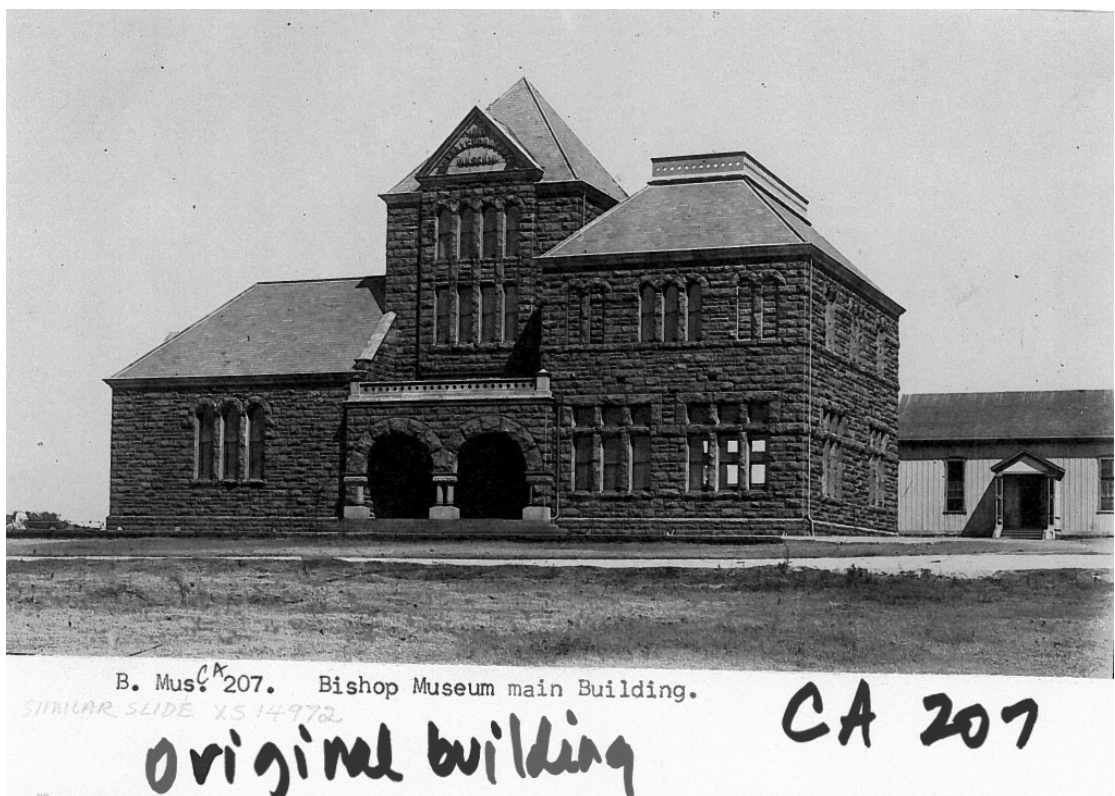


**Figure 2.2** Main Hall, AM, circa 1885. AM archives, C17018





**Figure 2.3** Main Hall, AM, early 1880s. AM archives, AM93A89



**Figure 2.4** Original building, BPBM, 1890-1892. BPBM archives, CA 207



**Figure 2.5** Entrance Hall, BPBM, 1892-1894. BPBM archives, PHfolder **SP 387**



**Figure 2.6** Main Room, BPBM, prior to 1894. BPBM Archives, PHfolder, **SP 402**





**Figure 2.7** Main Room, BPBM, prior to 1894. BPBM archives, CA411



**Figure 2.8** National Taiwan Museum (former VOM), Taipei. Wikipedia, public domain, 2007





**Figure 2.9** Aboriginal Chamber, VOM, circa 1915. Hsiao, 2009 p53



**Figure 2.10** Atayal diorama, Aboriginal Chamber, VOM, circa 1915. Hsiao, 2009, p 52





**Figure 2.11** AM on Princes Street with Ethnological Hall extension, 1917. AM Archives, C23825



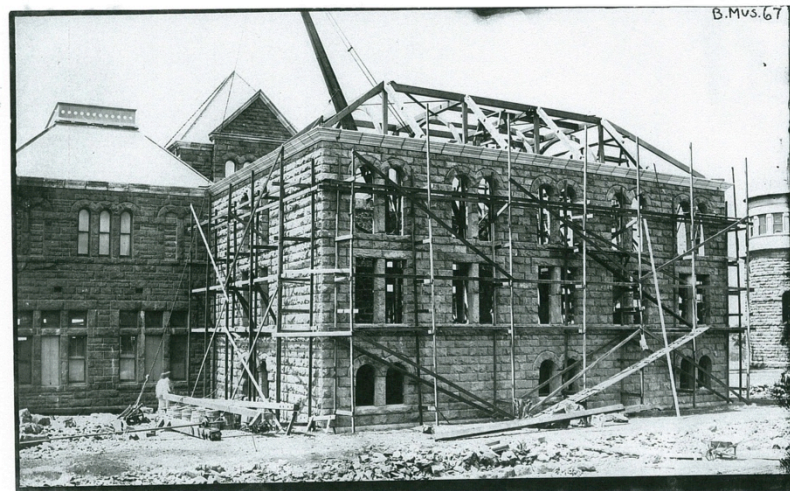
**Figure 2.12** Ethnological Hall, AM, 1894-1897. AM archives, B393





**Figure 2.13** Ethnological Hall (Maori side), AM, 1894-1897. AM archives, 4693





B. Mus. 67. Construction of Polynesian Hall, Bishop Museum.

CA 67

1894

Figure 2.14 Construction of PH, BPBM, 1894. BPBM archives, CA67



B. Mus. Poly. Hall.

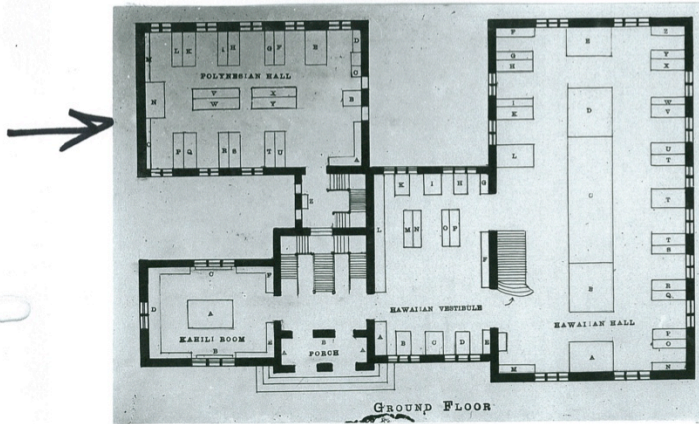
Bishop Museum, Polynesian Hall, prior to  
remodelling in 1956. Y53, 168  
PRISHAM COLLECTION A408

A408

Figure 2.15 Levels 1 & 2, PH, circa 1900. BPBM archives, A408

Book 9, p.26

↓ (first floor)



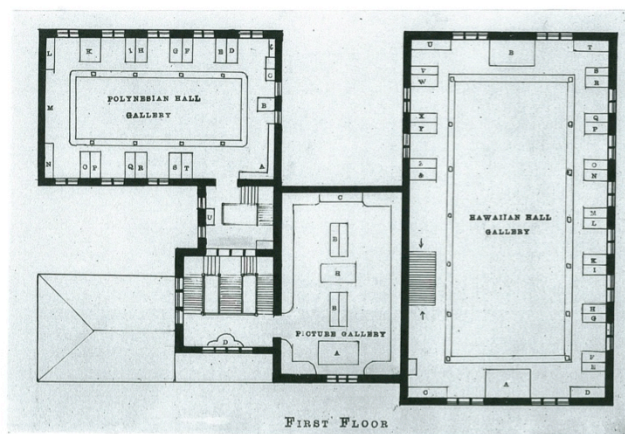
B. Mus. 203. Ground plan Bishop Museum main building.

# 18

CA 203

Figure 2.16 Level 1, Floor plan, Hawaiian Hall Complex, BPBM, circa 1903. BPBM archives, CA203

BOOK 9 page 20

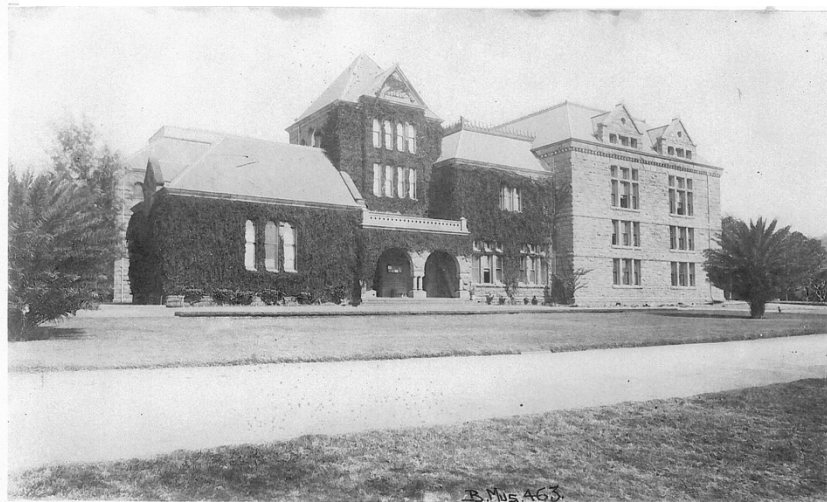


B. Mus. 204. Plan, Bishop Museum main building.

# 17

CA 204

Figure 2.17 Level 2, Floor plan, Hawaiian Hall Complex, BPBM, circa 1903. BPBM archives, CA204



B. Mus. 463. The Bernice Pauahi Bishop Museum exterior.

#15  
(After construction of Hawaiian Hall, far right.)

Book 9, p.24

Figure 2.18 Newly built Hawaiian Hall, BPBM, circa 1903. BPBM archives, Book 9 p 24

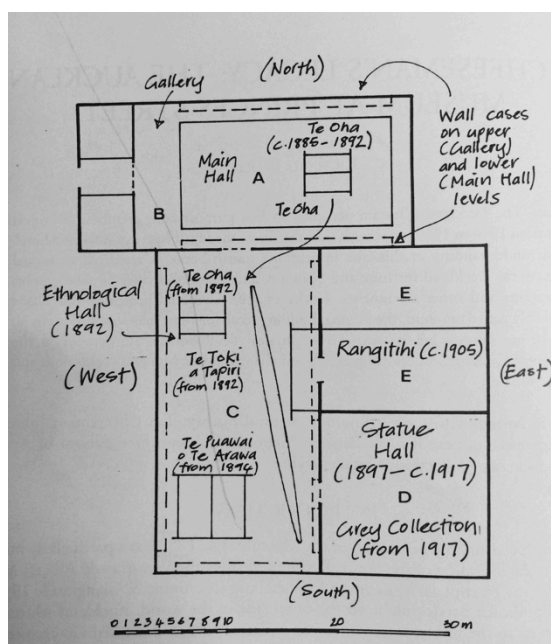


Figure 2.19 Floor plan, AM Princes Street after full extension. Wolfe, 2001 p2





**Figure 2.20** AM 1905 Extension  
dedicated to Polynesian ethnological  
material, 1905-1916. AM archives C8688



**Figure 2.21** Maori Hall, AM, circa 1905-1916. AM archives C42386

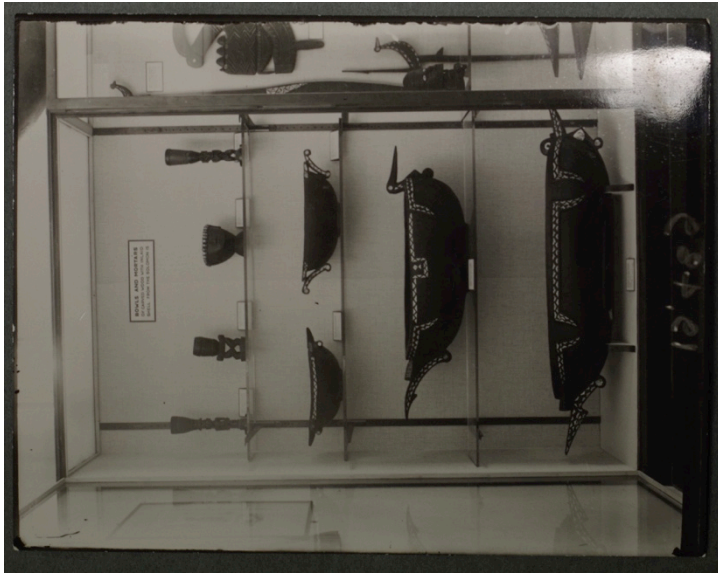




Figure 2.22 New AM on Observation Hill, 1929. AM archives, C22472



Figure 2.23 Pacific Anthropology Hall, AM, circa 1930s. AM archives, C1547



**Figure 2.24a** Solomon Islands case, AM,  
circa 1936. AM archives, 19.489

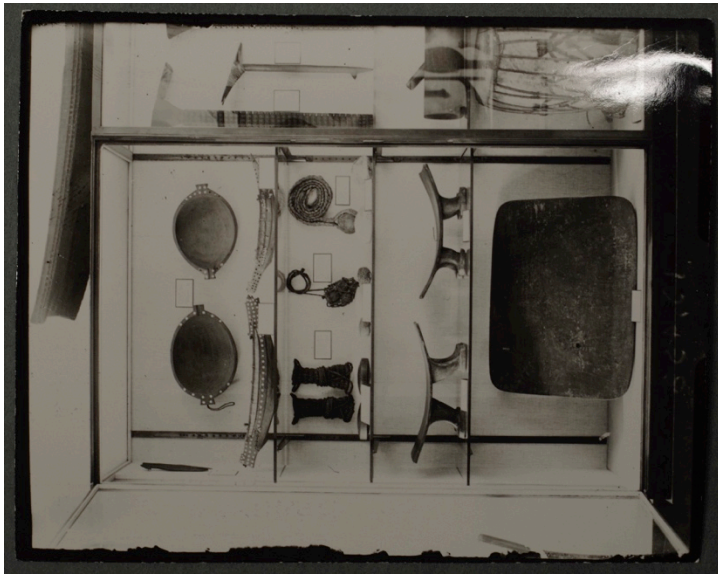


**Figure 2.24b** Solomon Islands case, AM,  
circa 1936. AM archives, 19.489

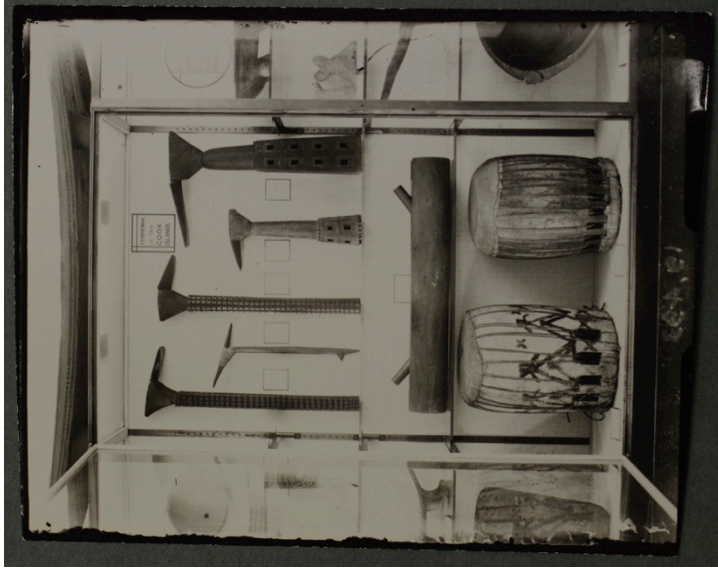


**Figure 2.24c** Solomon Islands case, AM,  
circa 1936. AM archives, 19.484

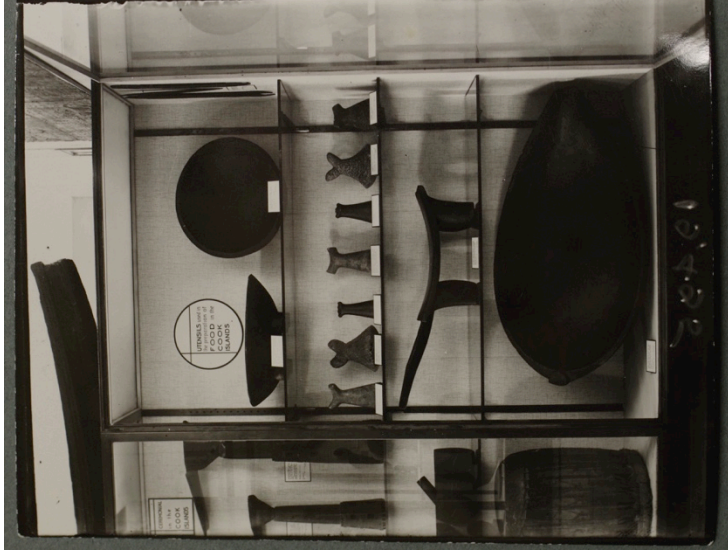




**Figure 2.25a** Cook Islands case, AM, circa 1936. AM archives, 19.499



**Figure 2.25b** Cook Islands case, AM, circa 1936. AM archives, 19.493

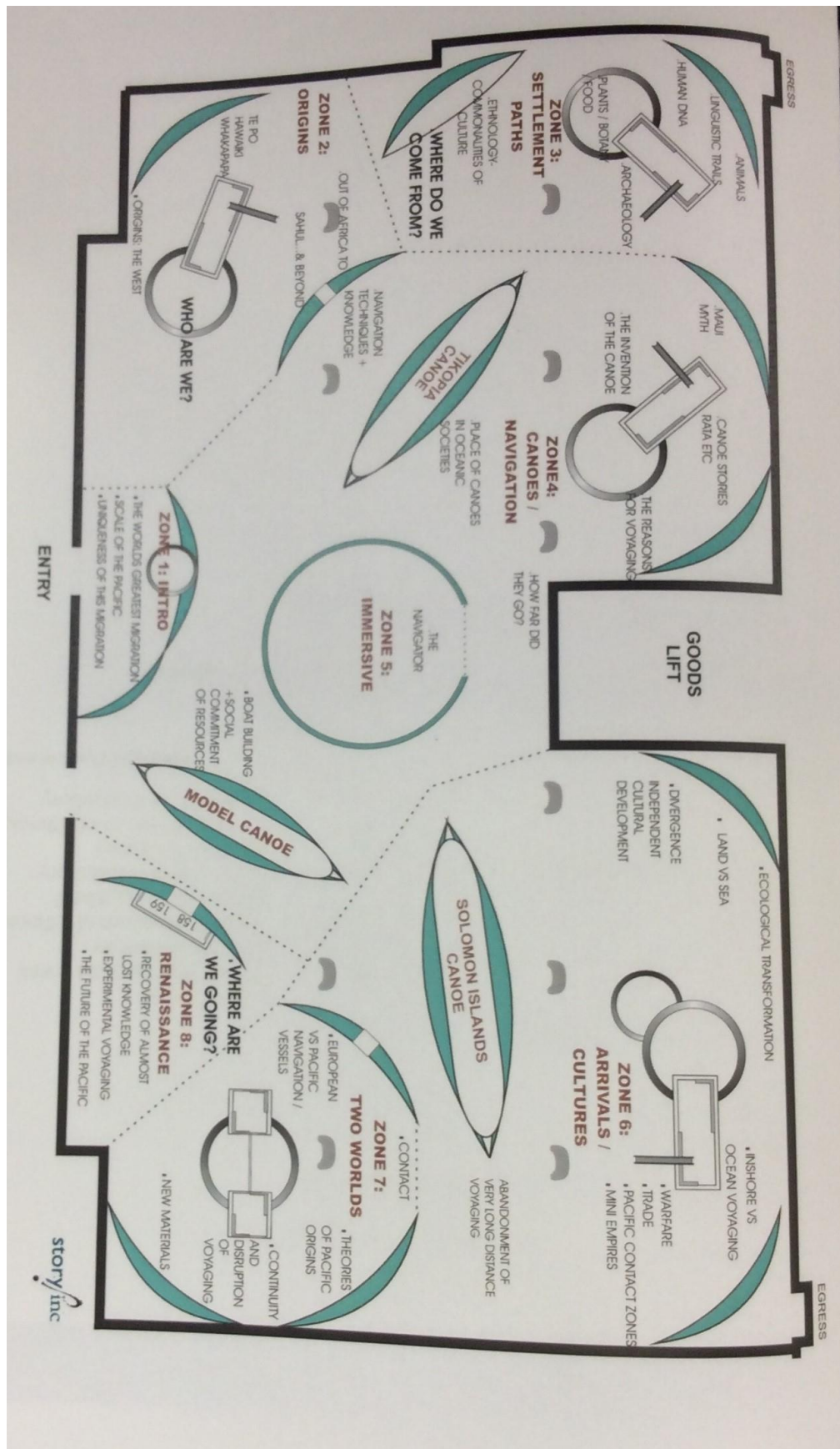


**Figure 2.25c** Cook Islands case, AM, circa 1936. AM archives, 19.495



### **Chapter 3:**

## **Producing Short-Term Exhibitions, Opening Museum Routes**



**Figure 3.1** Initial floor plan, VM, by Story Inc. Exhibition interpretative document, AM unclassified archives, 2005

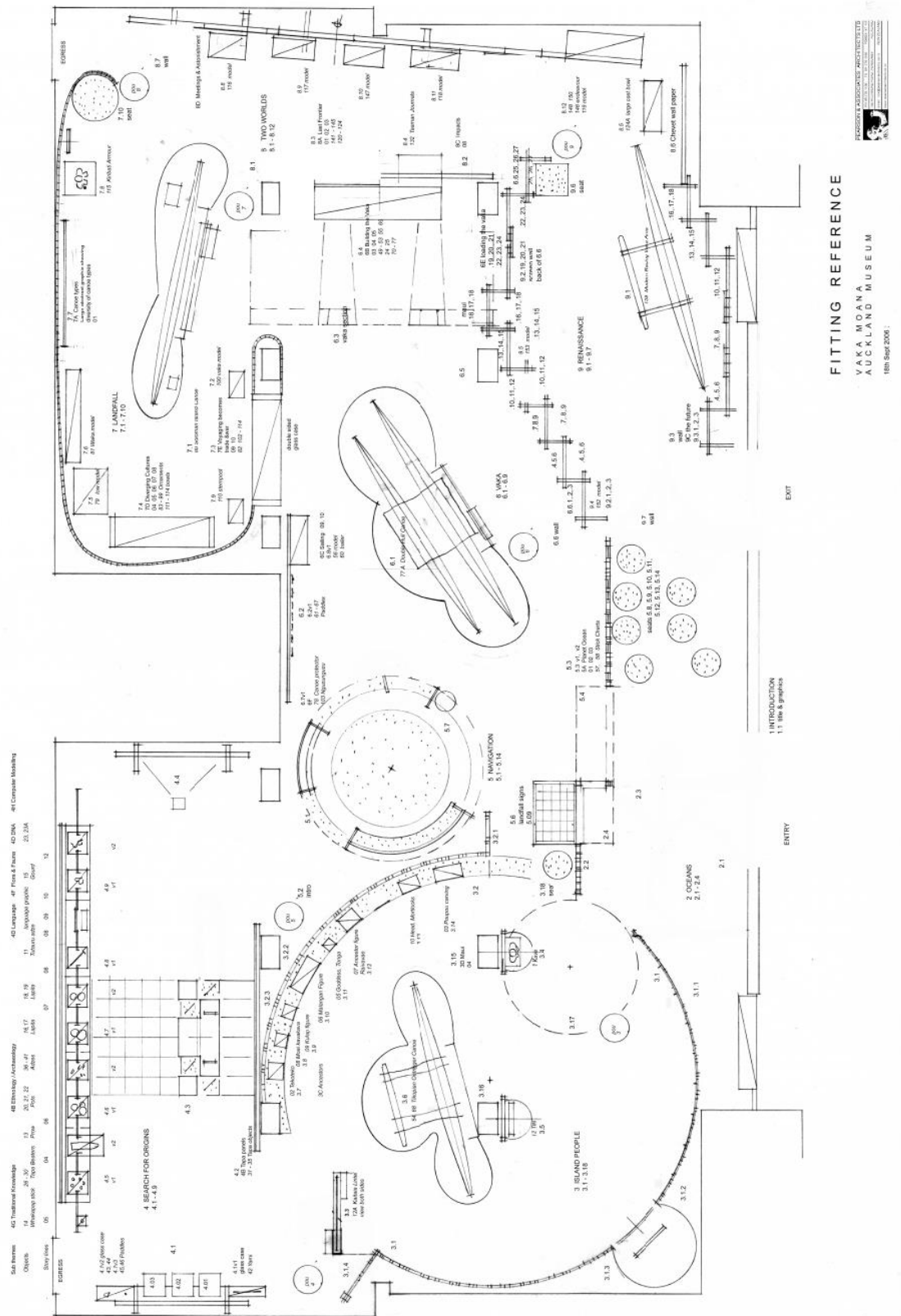
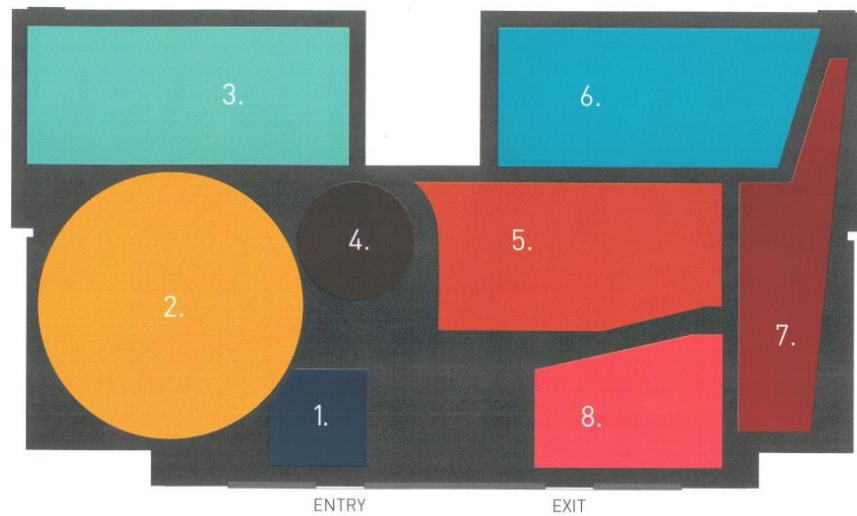


Figure 3.2 Floor plan, VM, by Rick Pearson & Associates Architects. AM unclassified digital archives, 18 September 2006



**Figure 3.3** Floor plan, VM. Graphic chart, AM unclassified digital archives, 2006

1.	Ocean	Blue/Black	654C
2.	Island	Yellow/Orange	123C
3.	Search	Aqua	325C
4.	Navigation	Purple	511C
5.	Vaka	Terracotta	1525C
6.	Landfall	Green/Blue	3135C
7.	Two Worlds	Red/Maroon	484C
8.	Renaissance	Fuscia	184C

**Figure 3.4** Colour code per exhibition section, VM. Graphic chart, AM unclassified exhibition archives, 2006



**Figure 3.5** Entrance of VM with visual of the Hōkūleʻa. AM digital photo archives, May 2007



**Figure 3.6** Section 2, Island People, VM. AM digital photo archives, January 2007





Figure 3.7 Section 3, Search for Origins, VM. AM digital photo archives, January 2007



Figure 3.8 Sections 4 and 5, Navigation and Vaka, VM. AM digital photo archives, January 2007

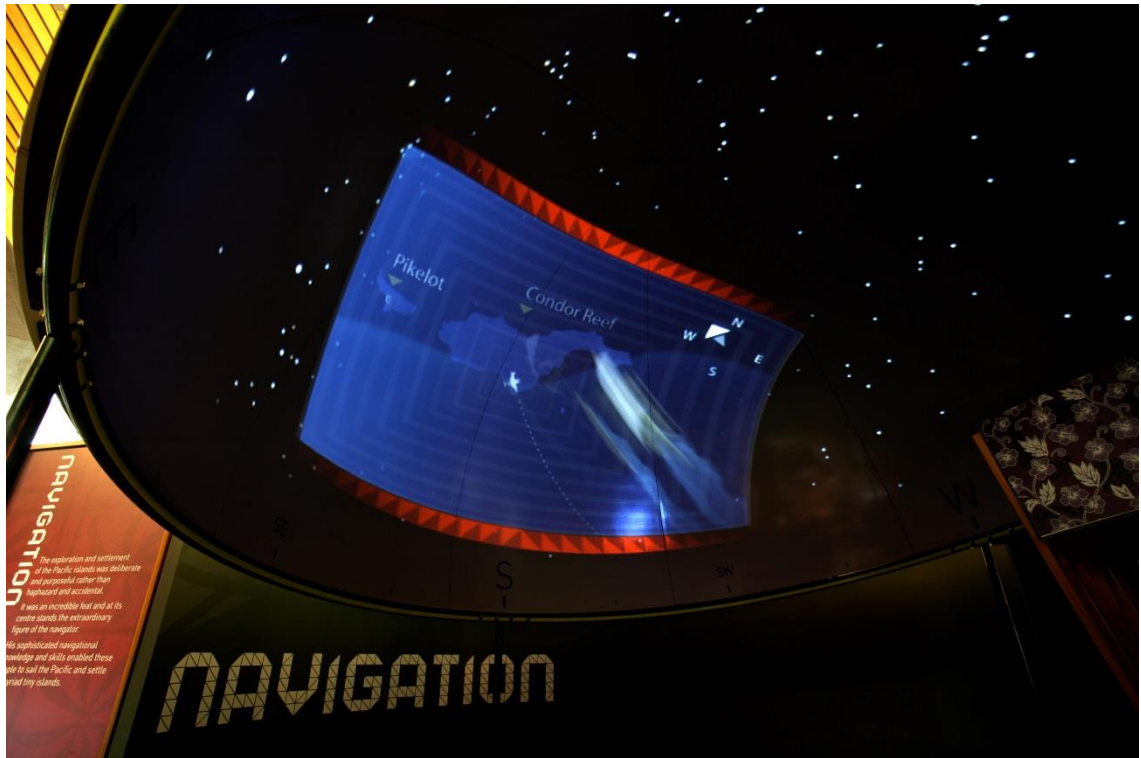


Figure 3.9 Celestial map in Section 4, Navigation, VM. AM digital photo archives, January 2007



Figure 3.10 Section 6, Landfall, VM. AM digital photo archives, January 2007





Figure 3.11 Section 7, Two Worlds, VM. AM digital photo archives, January 2007



Figure 3.12 Section 8, Renaissance, VM. AM digital photo archives, January 2007



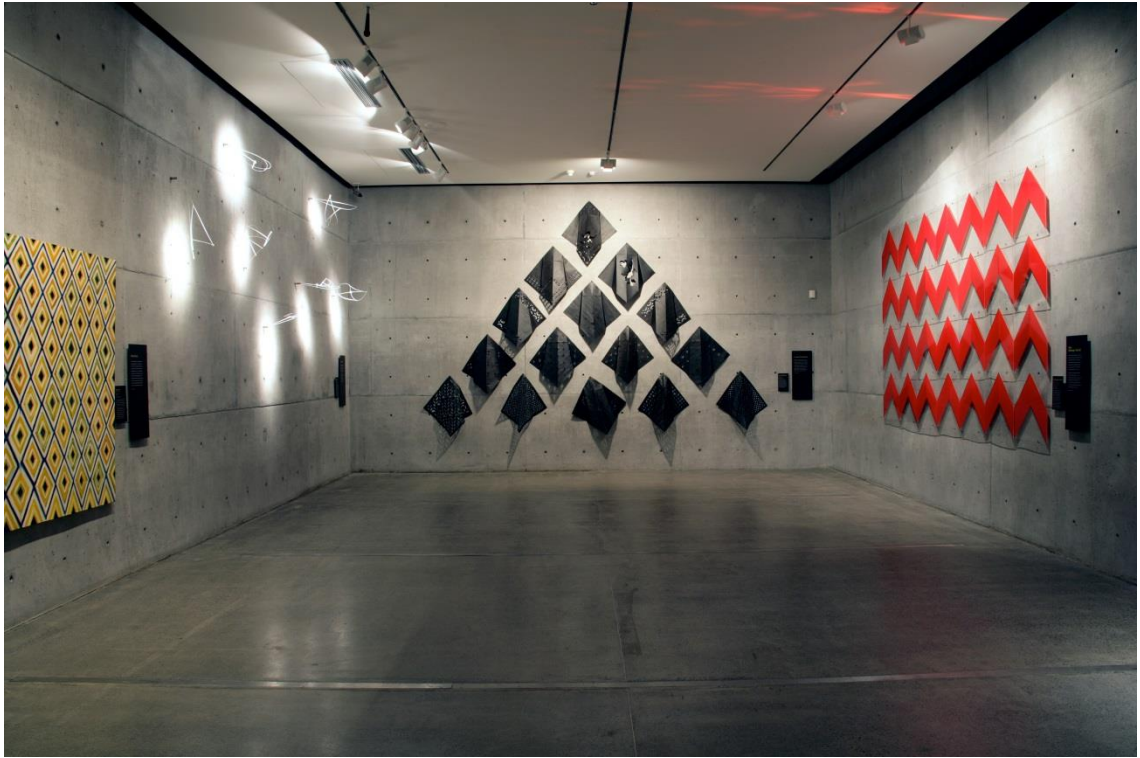


Figure 3.13 Room 1, LF Auckland. AM digital photo archives, 2007



Figure 3.14 Room 1, LF Auckland. AM digital photo archives, 2007



**Figure 3.15** Room 1, LF Auckland. AM digital photo archives, 2007



**Figure 3.16** Room 2, LF Auckland. AM digital photo archives, 2007





Figure 3.17 Room 2, LF Auckland. AM digital photo archives, 2007



Figure 3.18 Room 2, LF Auckland. AM digital photo archives, 2007

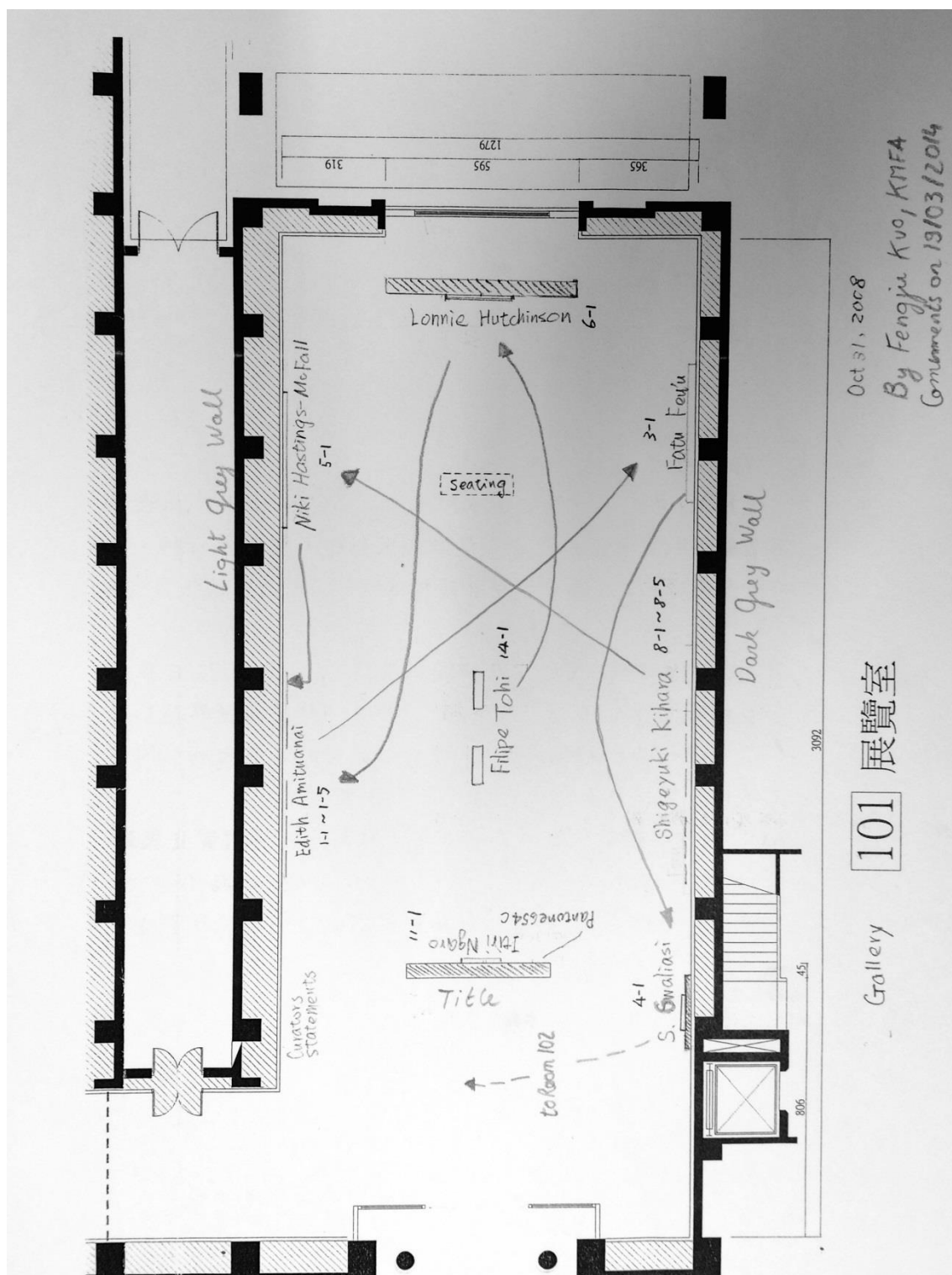


Figure 3.19 Floor plans, Room 101, LF Taiwan. KMFA archives, 31 October 2008

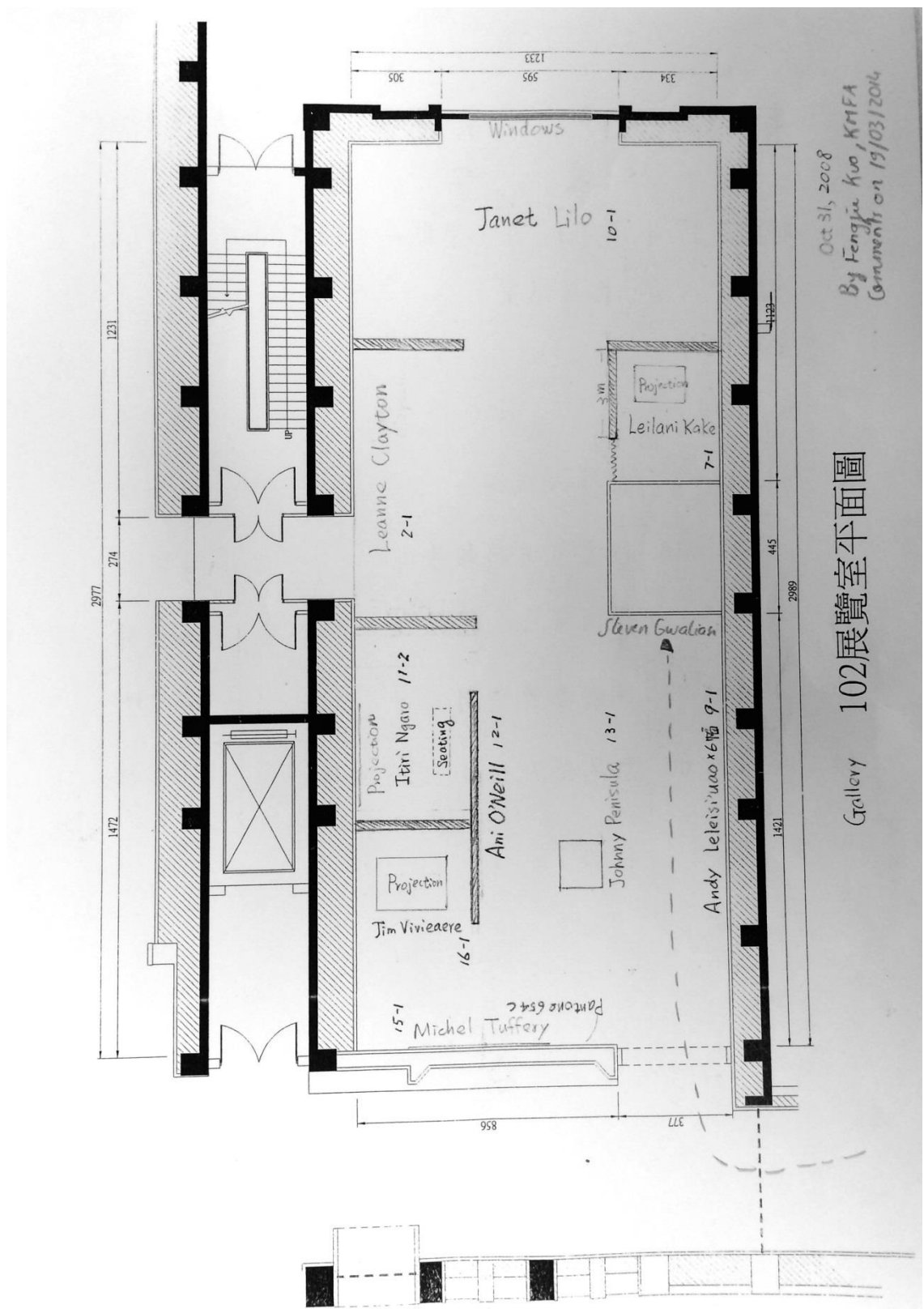


Figure 3.20 Floor plans, Room 102, LF Taiwan. KMFA archives, 31 October 2008





Figure 3.21 Room 101, LF Taiwan. KMFA digital archives, 2008-2009

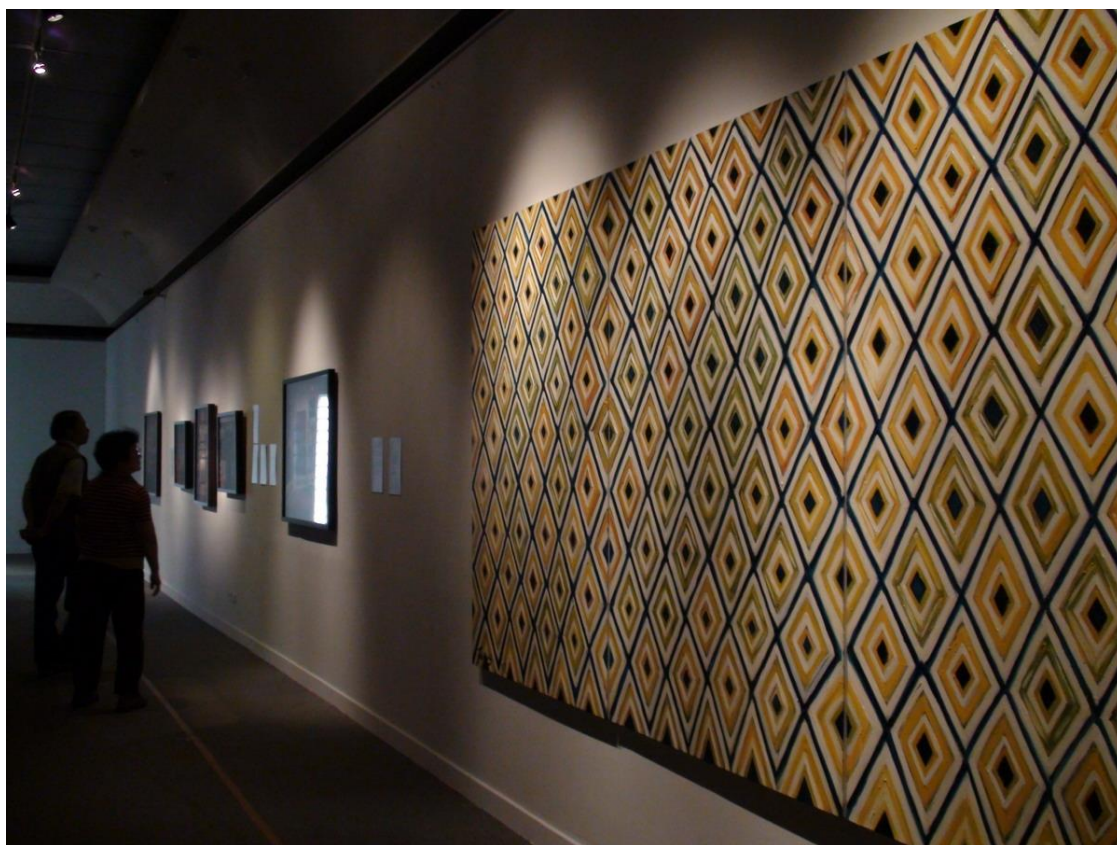


Figure 3.22 Room 101, LF Taiwan. KMFA digital archives, 2008-2009



Figure 3.23 Room 101, LF Taiwan. KMFA digital archives, 2008-2009



Figure 3.24 Room 102, LF Taiwan. KMFA digital archives, 2008-2009





**Figure 3.25** Room 102, LF Taiwan. KMFA digital archives, 2008-2009



**Figure 3.26** Room 102, LF Taiwan. Installation by Leanne Clayton, KMFA digital archives, 2008-2009



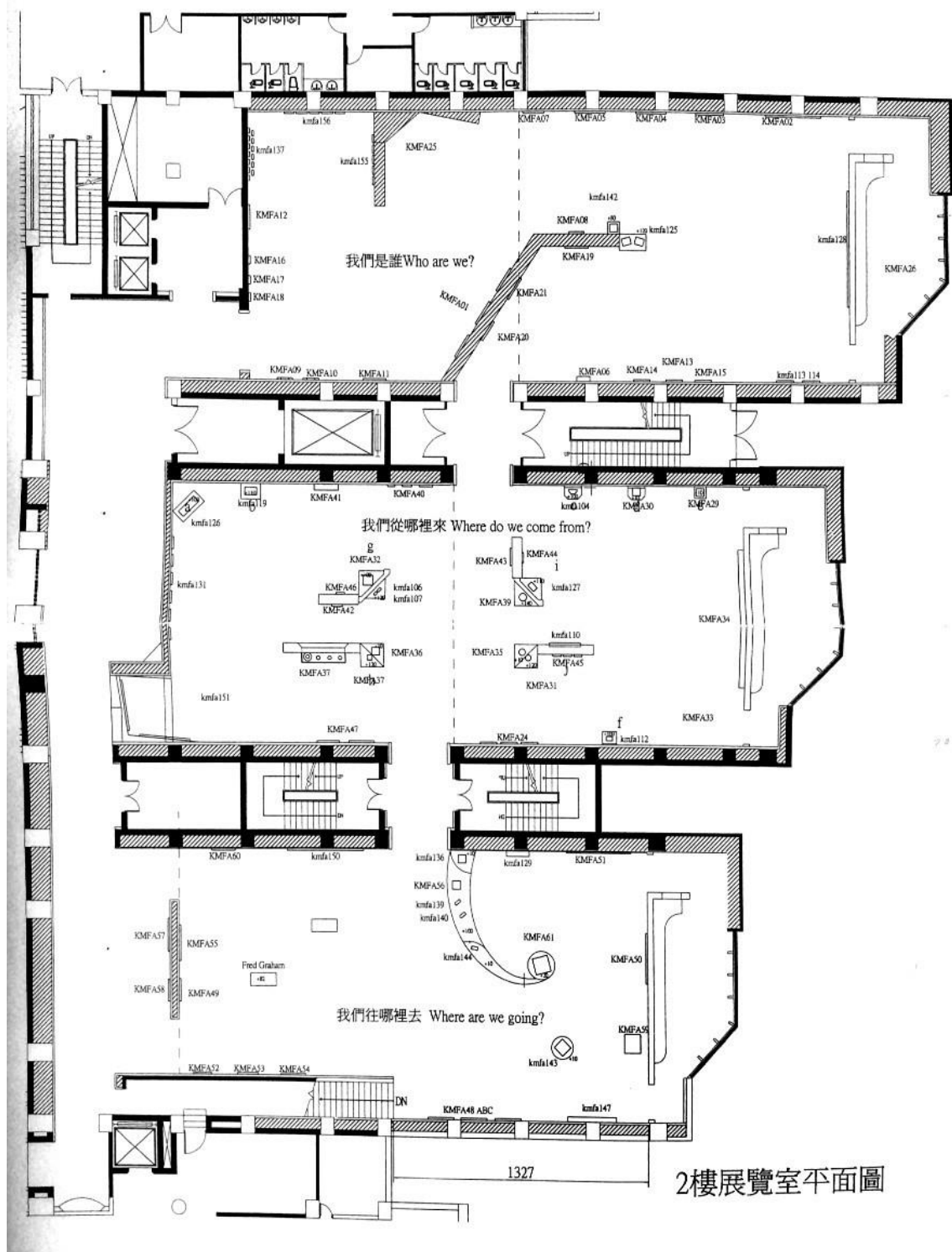
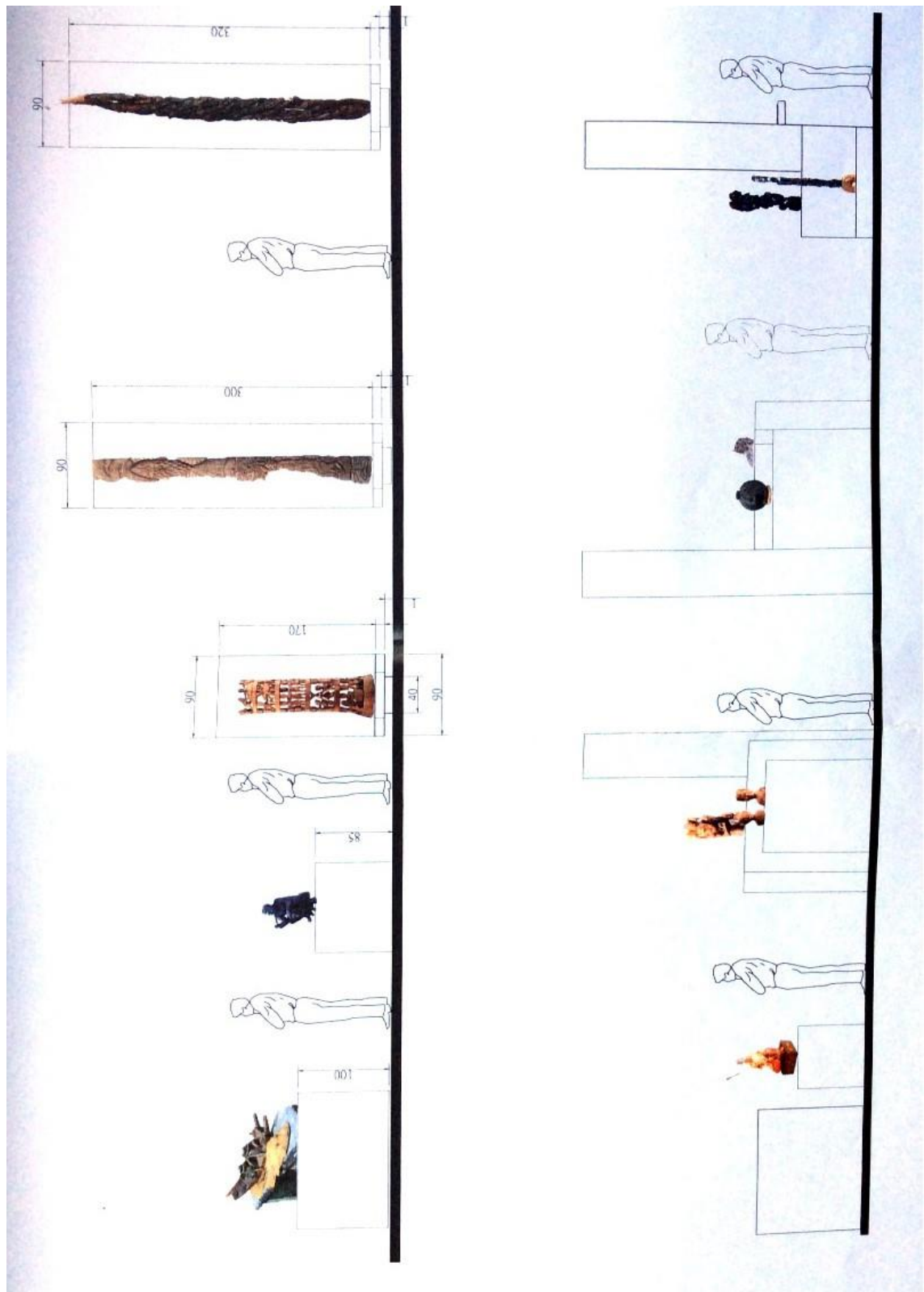


Figure 3.27 Floor plan, AOT. KMFA archives, 2007



**Figure 3.28** Comparative display layout, Room 202, “Where do we come from?”, AOT. KMFA archives, 2007



Figure 3.29 Introduction room, floor 2, AOT. KMFA digital archives, January 2008



Figure 3.30 Room 201, AOT. KMFA digital archives, January 2008





Figure 3.31 Room, 201, AOT. KMFA digital archives, January 2008



Figure 3.32 Room, 201, AOT. KMFA digital archives, January 2008



Figure 3.33 Room, 202, AOT. KMFA digital archives, January 2008

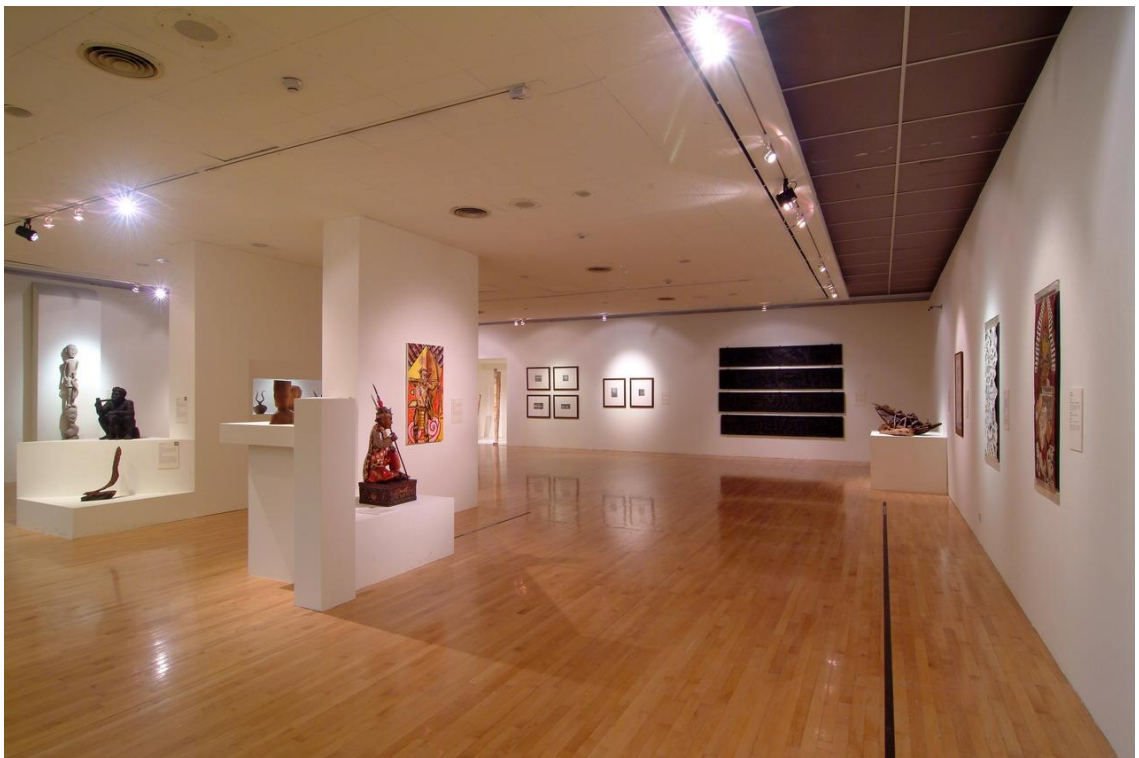


Figure 3.34 Room, 202, AOT. KMFA digital archives, January 2008





Figure 3.35 Room, 203, AOT. KMFA digital archives, January 2008



Figure 3.36 Room, 203, AOT. KMFA digital archives, January 2008





38



**Figure 3.38** Former Sculpture Hall, entrance hall of TGJ showing a floor map of Austronesia, TGJ. KMFA digital archives, 2009



**Figure 3.39** Introduction, TGJ. KMFA digital archives, 2009



**Figure 3.40** Room 104, local artists, Sound of Water by Ruby Swana (2009), TGJ. KMFA digital archives, 2009



**Figure 3.41** Room 104, local artists, TGJ. KMFA digital archives, 2009





Figure 3.42 Room 104, local artists, TGJ. KMFA digital archives, 2009



Figure 3.43 Sakuliu Pavavalung's workshop completing the carved totem poles for *Three Mountains on Our Mind*, TGJ. KMFA digital archives, September 2009



Figure 3.44 Room 105, foreign artists, TGJ. KMFA digital archives, 2009



Figure 3.45 Room 105, foreign artists, TGJ. KMFA digital archives, 2009



Figure 3.46 Room 105, foreign artists, TGJ. KMFA digital archives, 2009

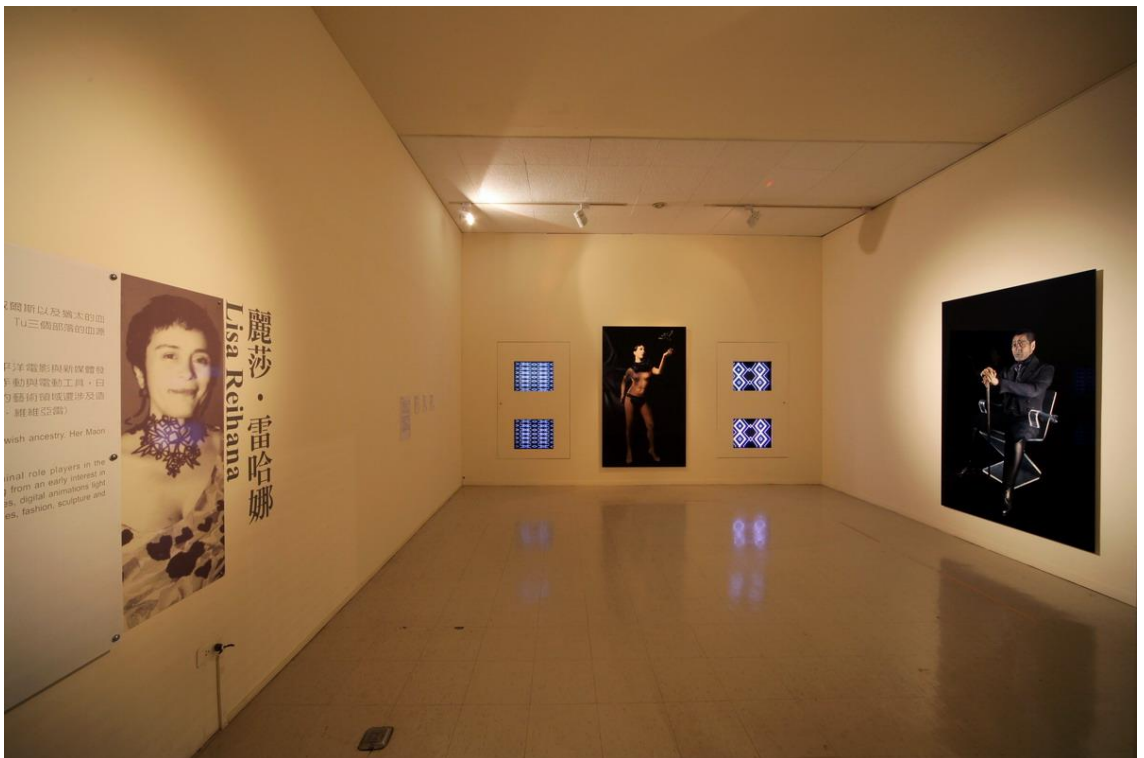


Figure 3.47 Room 105, foreign artists, TGJ. KMFA digital archives, 2009





Figure 3.48 Room 105, foreign artists, TGJ. KMFA digital archives, 2009

#### **Chapter 4:**

### **Constructing Long-Term Displays, Musealising Trans-Pacific Pathways**

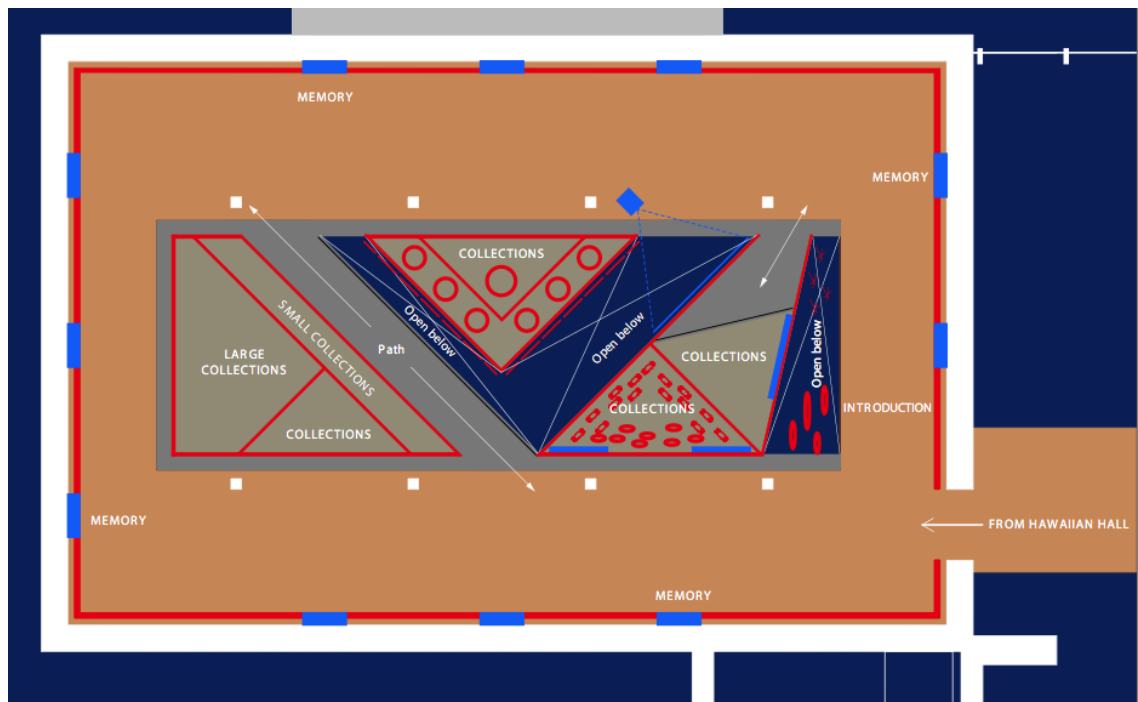


Figure 4.1 Suggested floor plan, PH, BPBM. Conceptual plan RAA, 20 April 2006: 50



Figure 4.2 Suggested display, PH, BPBM. Conceptual plan RAA, 20 April 2006: 53



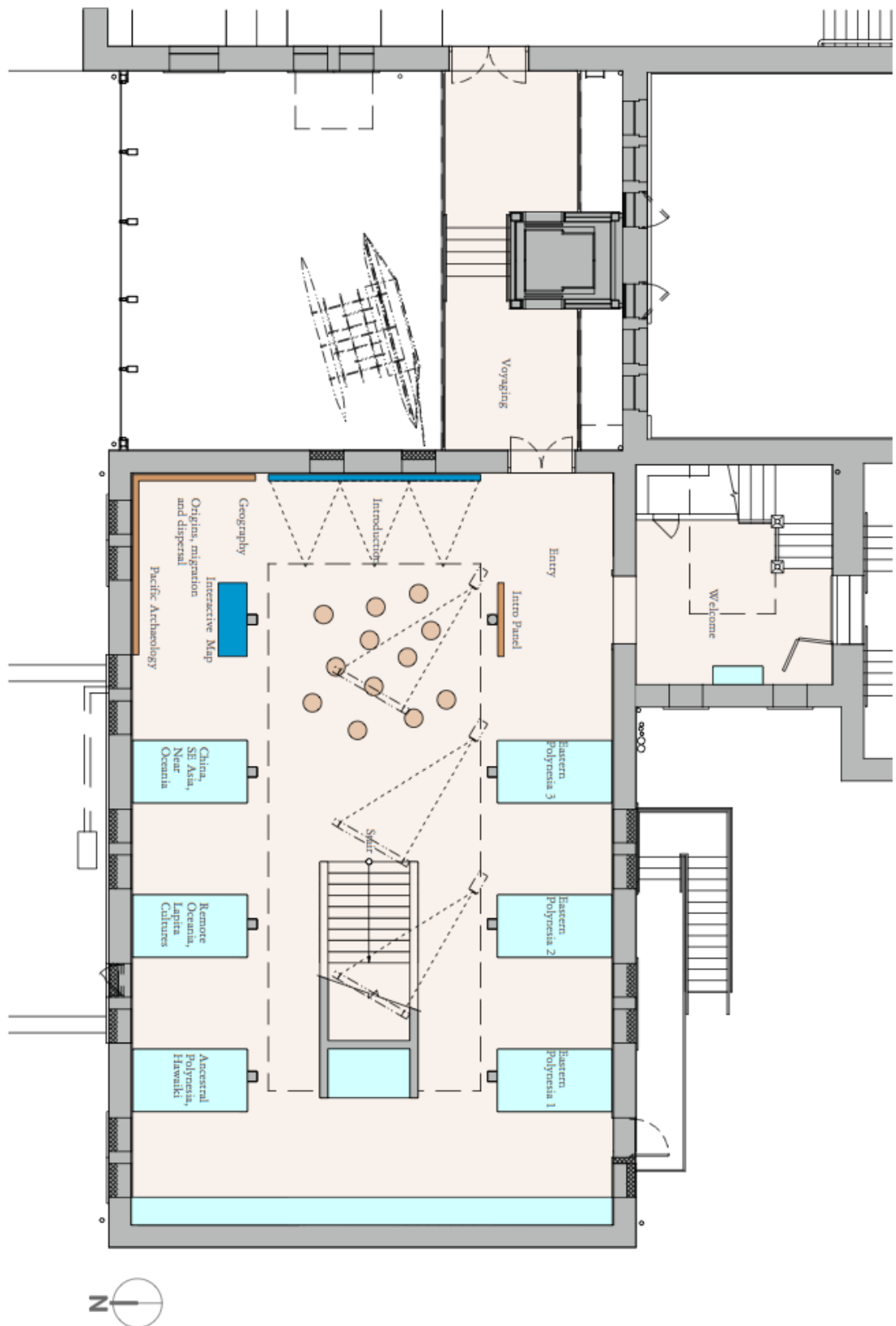


Figure 4.3 Floor plan PH1, BPBM. 31 March 2010

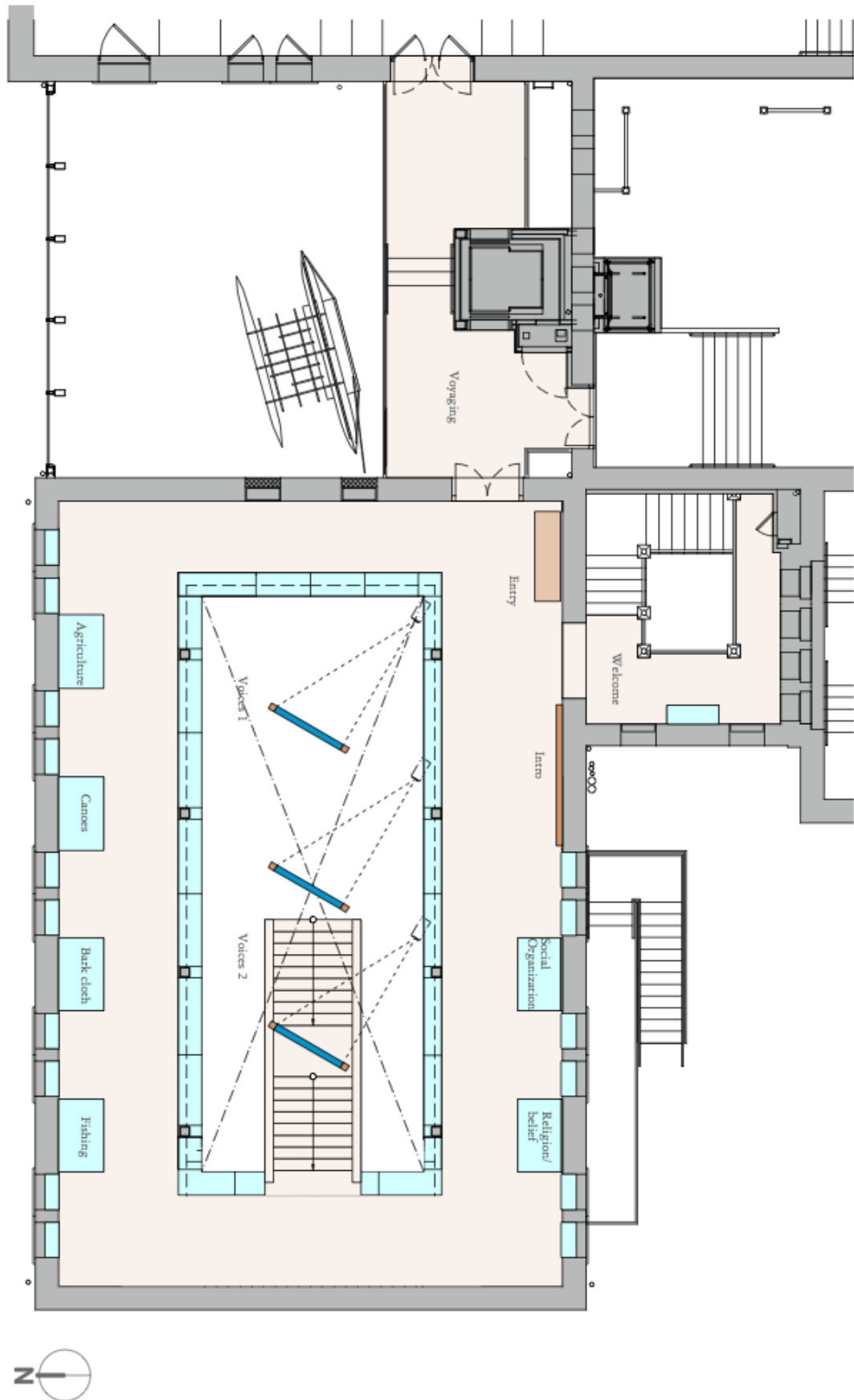


Figure 4.4 Floor plan PH2, BPBM. 31 March 2010










**Figure 4.7** Internal three-pole structure, PH. Photograph by Alice Christophe, August 2013



**Figure 4.8** Mock-up canoe case with Susan Smolinski (L), Dave Kemble (C), and Richard Hards (R). Photograph by Alice Christophe, September 2013



**Figure 4.9** Marques Hanalei Marzan calling the delegation in the Hall, Grand Unveiling, PH. Photograph by Alice Christophe, 21 September 2013



## GRAND UNVEILING OF PACIFIC HALL

SATURDAY • SEPTEMBER 21, 2013


### FREE ADMISSION

9 A.M. – 9 P.M. OPENING DAY FESTIVITIES

9:30 A.M. PUBLIC CEREMONY ON THE GREAT LAWN

JOIN US FOR AN ALL-DAY CELEBRATION  
OF ALL THINGS PACIFIC:

- FOOD • FASHION • FILMS
- POETRY • LECTURES • ARTS & CRAFTS
- WEAVING DEMONSTRATIONS
- MUSIC & DANCE PERFORMANCES

SPONSORED BY 

### EVENT HIGHLIGHTS

---

**PUBLIC OPENING CEREMONY, 9:30 A.M., GREAT LAWN**

**MUSIC and DANCE | GREAT LAWN**


- Te Lumanaki o Tokelau, Te Vai Ura Nui** (Tahitian) and other Pacific Island performances
- Te Reinga**, a collaborative dance performance by Māori choreographer **Jack Gray** and Bishop Museum staff
- Evening concert with **Taimane, Aaron Salā** and more

**ARTS | FASHION | DEMONSTRATIONS | FOOD**

- An array of Pacific Island arts and crafts
- Pacifika Stylings** – Over a dozen vendors featuring clothing, jewelry, and accessories
- Weaving demonstrations from the Marshall Islands, French Polynesia, and Hawai'i
- A variety of foods, including Chamorro, Micronesian, & Hawaiian

**LECTURES | PRESENTATIONS | FILMS**

- "Kau Moana: Peoples of the Ocean Deep" – Tongan storyteller **Emil Wolfgramm**
- "The Settlement of the Pacific and Hawaiian Origins" – Dr. **Patrick Kirch**
- "The Role of Women in Oceania" – Dr. **Luafata Simanu-Klutz**
- "'Anu'u Nu'u Ka 'Ike: Community Muraling in Celebration of Relations" – **Meleanna Meyer**
- "Pacifika Poetry" – readings by Pacific artists
- Films, including **There Once Was An Island** and **The Land of Eb**



**BERNICE PAUAAHI BISHOP MUSEUM**

1525 BERNICE STREET | HONOLULU, HAWAII | (808) 847-3511

WWW.BISHOPMUSEUM.ORG/PACIFIC HALL

**Figure 4.10** Programmes, Grand Unveiling, PH. 21 September 2013





Figure 4.11 General view post-opening PH. Photograph by Alice Christophe, September 2013



**Figure 4.12** PH1-01 Tiled entrance. Photograph by Alice Christophe, September 2013



**Figure 4.13** PH2-01 *An Extraordinary Man*, case dedicated to Te Rangi Hiroa/Sir Peter Henry Buck. Photograph by Alice Christophe, September 2013





Figure 4.14 PH2 General view. Photograph by Alice Christophe, September 2013



Figure 4.15 PH2-E02 *Settlement of Oceania*. Photograph by Alice Christophe, September 2013





Figure 4.16 PH2-N01 *How We Know*. Photograph by Alice Christophe, September 2013

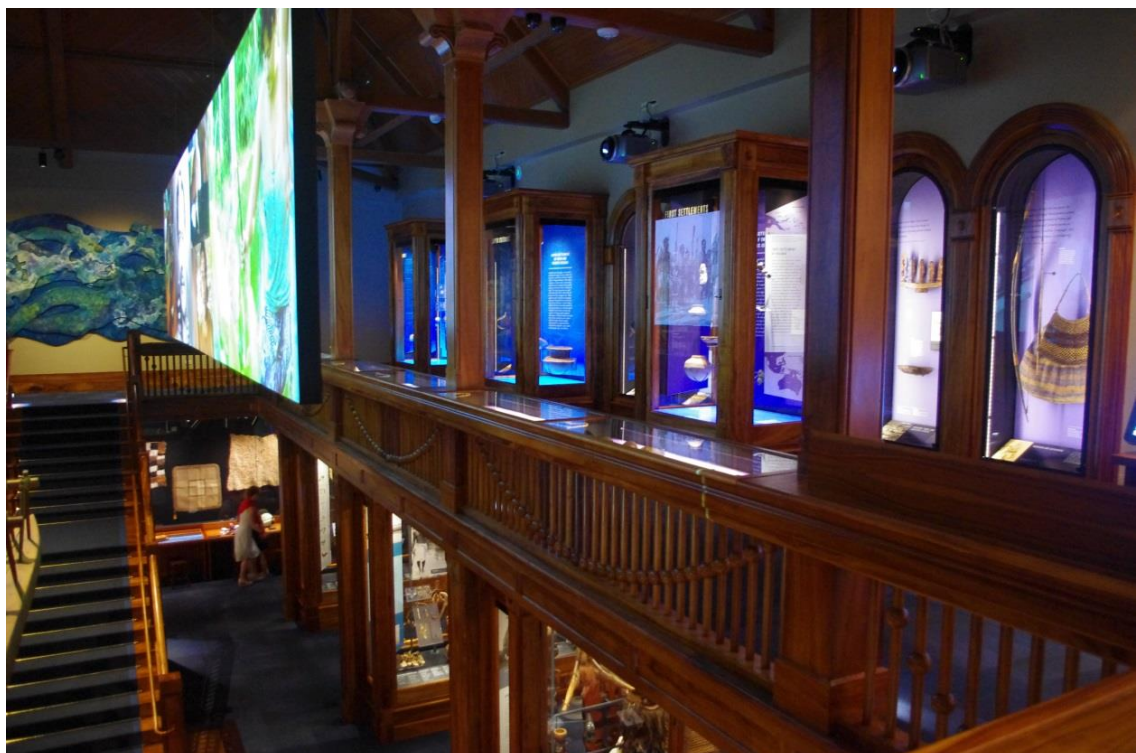


Figure 4.17 PH2 General view north wall, dedicated to Near Oceania. Photograph by Alice Christophe, September 2013



**Figure 4.18** PH2-03 *Voyaging, Trade and Ancestral Spirits* (L), PH2-02 *Hunters and Gatherers* (R). Photograph by Alice Christophe, September 2013



**Figure 4.19** PH2-04a *First Settlement of Oceania*. Photograph by Alice Christophe, September 2013





Figure 4.20 PH2-R04L *Kuk Swamp and First Contact*, the importance of agriculture in Papua New Guinea. Photograph by Alice Christophe, September 2013



Figure 4.21 PH2-R04R *Genetic Data*. Photograph by Alice Christophe, September 2013



Figure 4.22 PH2-04b *First Settlement of the Pacific Islands*. Photograph by Alice Christophe, September 2013





**Figure 4.23** H2-07, PH2-06, PH2-05 Material from Taiwan. Photograph by Alice Christophe, September 2013



**Figure 4.24** PH2-06 Contemporary Taiwan indigenous material. Photograph by Alice Christophe, September 2013

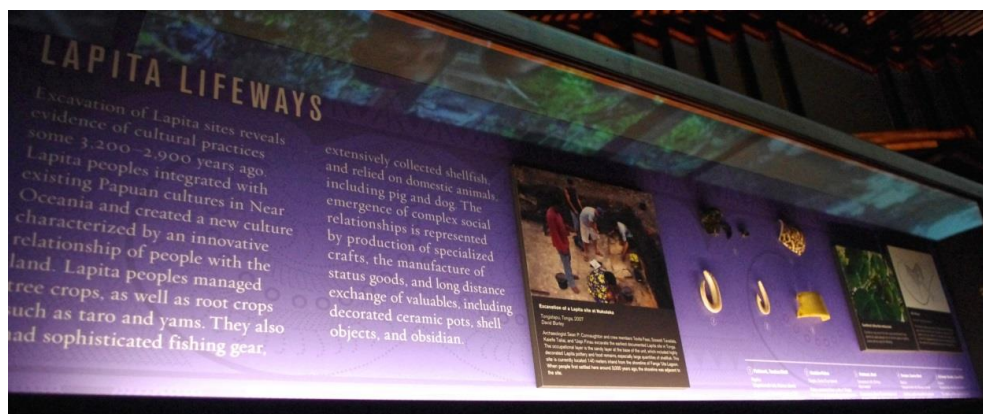


Figure 4.25 PH2-R05L *Lapita Lifeways*. Photograph by Alice Christophe, September 2013

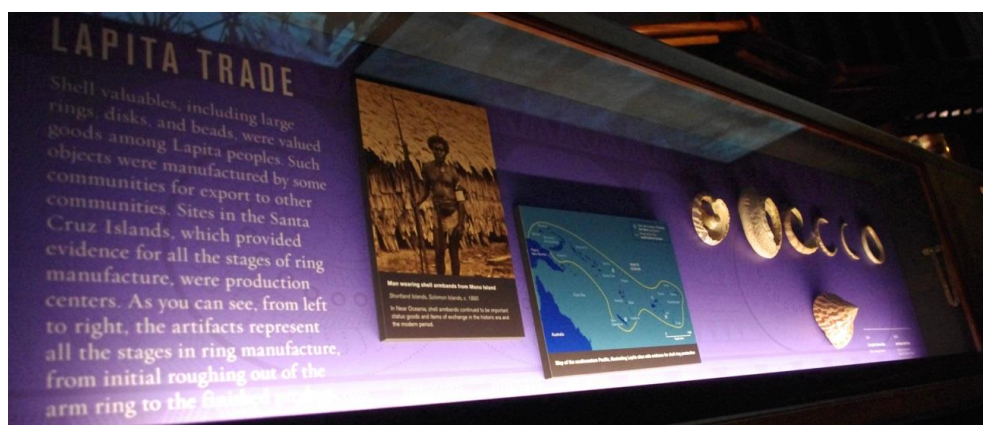


Figure 4.26 PH2-R05R *Lapita Trade*. Photograph by Alice Christophe, September 2013



Figure 4.27 PH2-10 *Hawaiki* (L), PH2-09 *Fijian ceramics* (C), PH2-08 *Lapita pottery motifs* (R). Photograph by Alice Christophe, September 2013



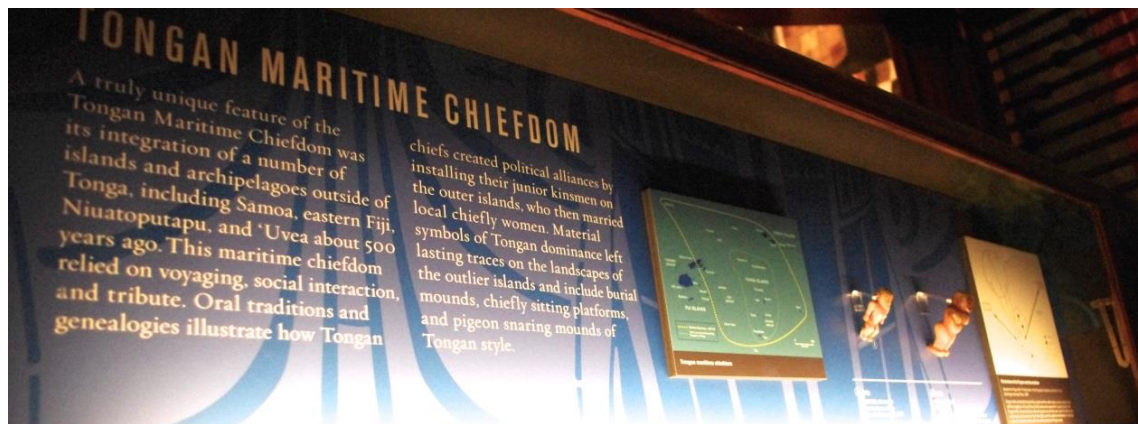


Figure 4.28 PH2-R06L *Micronesia*. Photograph by Alice Christophe, September 2013



Figure 4.29 PH2-10 *Hawaiki*. Photograph by Alice Christophe, September 2013





**Figure 4.30** PH2-R06R *Tongan Maritime Chieftdom*. Photograph by Alice Christophe, September 2013



**Figure 4.31** PH2-12, PH2-11 Ethnographic material from Fiji, Tonga and Sāmoa, PH2-10 *Hawaiki*. Photograph by Alice Christophe, September 2013



Figure 4.32 PH2-W4, *Anu'u Nu'u Ka'ike*. Photograph by Alice Christophe, September 2013



Figure 4.33 PH2 General view south wall. Photograph by Alice Christophe, September 2013



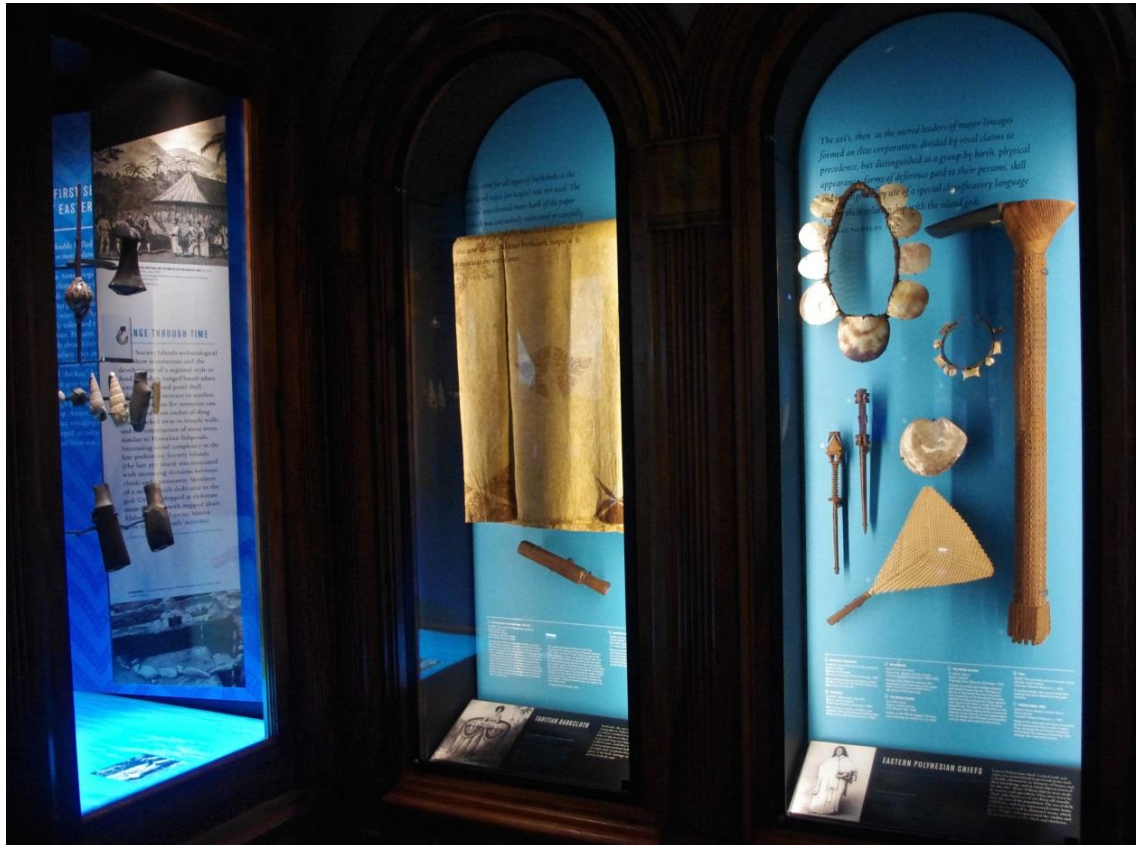


Figure 4.34 PH2-15 *Change Through Time* (L), PH2-14 *Tahitian Barkcloth* (C), PH2-13 *Eastern Polynesian Chiefs* (R). Photograph by Alice Christophe, September 2013



Figure 4.35 PH2-15 *First settlement of Eastern Polynesia*. Photograph by Alice Christophe, September 2013





Figure 4.36 PH2-R11L *East Polynesian Ornaments*. Photograph by Alice Christophe, September 2013



Figure 4.37 PH2-R11R *East Polynesian Ritual Sites*. Photograph by Alice Christophe, September 2013

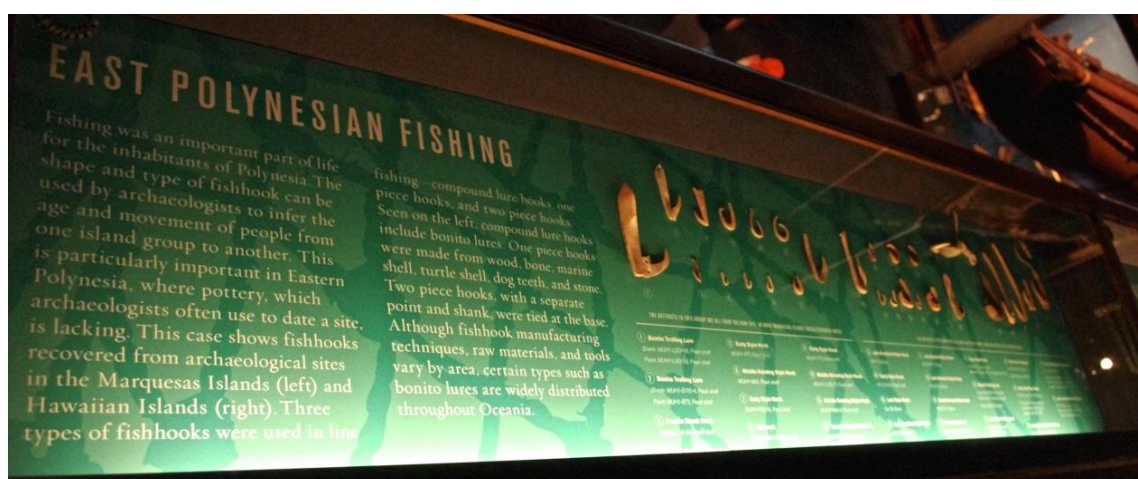


Figure 4.38 PH2-R12L *East Polynesian Fishing*. Photograph by Alice Christophe, September 2013



**Figure 4.39** PH2-17 *Marquesan Ornamentation* (L), PH2-16 *Tattooing* (C), PH2-15 *Society Islands* (R). Photograph by Alice Christophe, September 2013



**Figure 4.40** PH2-18 *Settlement of the Marquesas Islands* (C), *Innovation and Change through Time* (R). Photograph by Alice Christophe, September 2013





**Figure 4.41** PH2-21 Easter Island, New Zealand, and Hawai'i (L), PH2-20 Easter Island (C), PH2-19 *Chiefly Cultures* (R). Photograph by Alice Christophe, September 2013



**Figure 4.42** PH2-21a *Settlement of Rapa Nui*. Photograph by Alice Christophe, September 2013





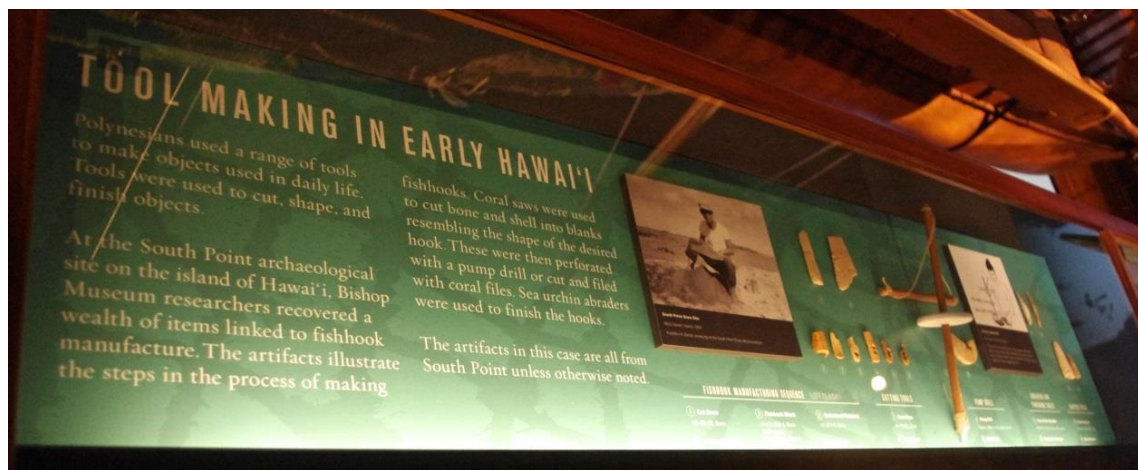
**Figure 4.43** PH2-21b *Settlement of Aotearoa*. Photograph by Alice Christophe, September 2013



**Figure 4.44** PH2-21c *Settlement of Hawai'i*. Photograph by Alice Christophe, September 2013



**Figure 4.45** PH2-R12R *Early Hawai'i*. Photograph by Alice Christophe, September 2013



**Figure 4.46** PH2-R13L *Early Hawai'i*. Photograph by Alice Christophe, September 2013



**Figure 4.47** PH2-R13R *South American Contact*. Photograph by Alice Christophe, September 2013





Figure 4.48 PH1 General view. Photograph by Alice Christophe, September 2013

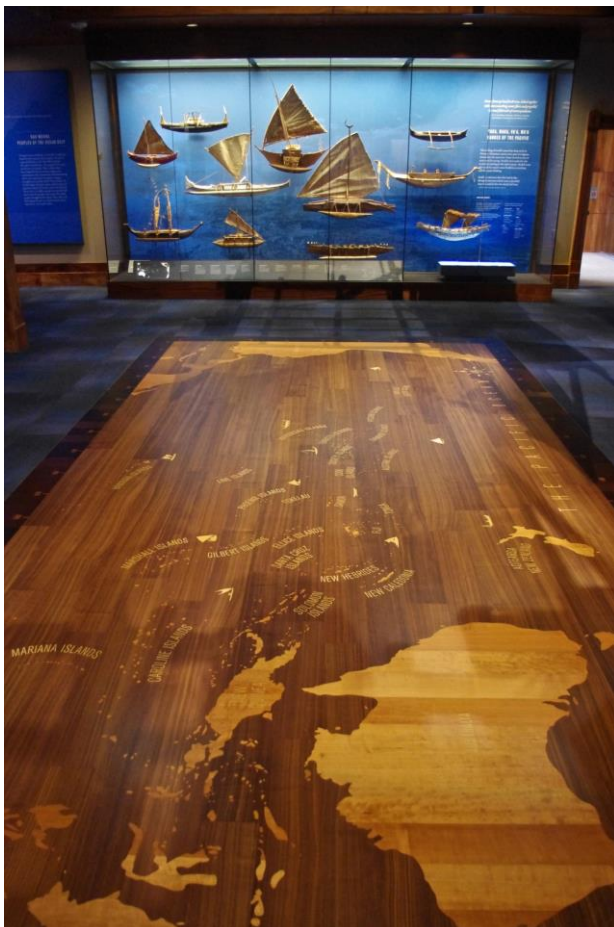


Figure 4.49 PH1-02 *Vaka, Waka, Va'a, Wa'a – Canoes of the Pacific*. Photograph by Alice Christophe, September 2013





Figure 4.50 PH1-E01, PH1-N05 *Kau Moana – Peoples of the Ocean Deep*, PH1-03 Mourning costume (L). Photograph by Alice Christophe, September 2013



Figure 4.51 PH1-04E *Ancestors*. Photograph by Alice Christophe, September 2013





Figure 4.52 PH1-04W *Gods Are Ancestors*. Photograph by Alice Christophe, September 2013



Figure 4.53 PH1-05E *Fishermen, Innovation and Skill*. Photograph by Alice Christophe, September 2013





Figure 4.54 PH1-05W *A Pacific Fishing Culture*. Photograph by Alice Christophe, September 2013



Figure 4.55 PH1-06E *Food from the Land*. Photograph by Alice Christophe, September 2013





**Figure 4.56** PH1-06W *Hunting, Gathering and Gardening in New Guinea*. Photograph by Alice Christophe, September 2013



**Figure 4.57** PH1-07 *Treasure case and resource centre*. Photograph by Alice Christophe, September 2013





Figure 4.58 PH1-09E *People*. Photograph by Alice Christophe, September 2013

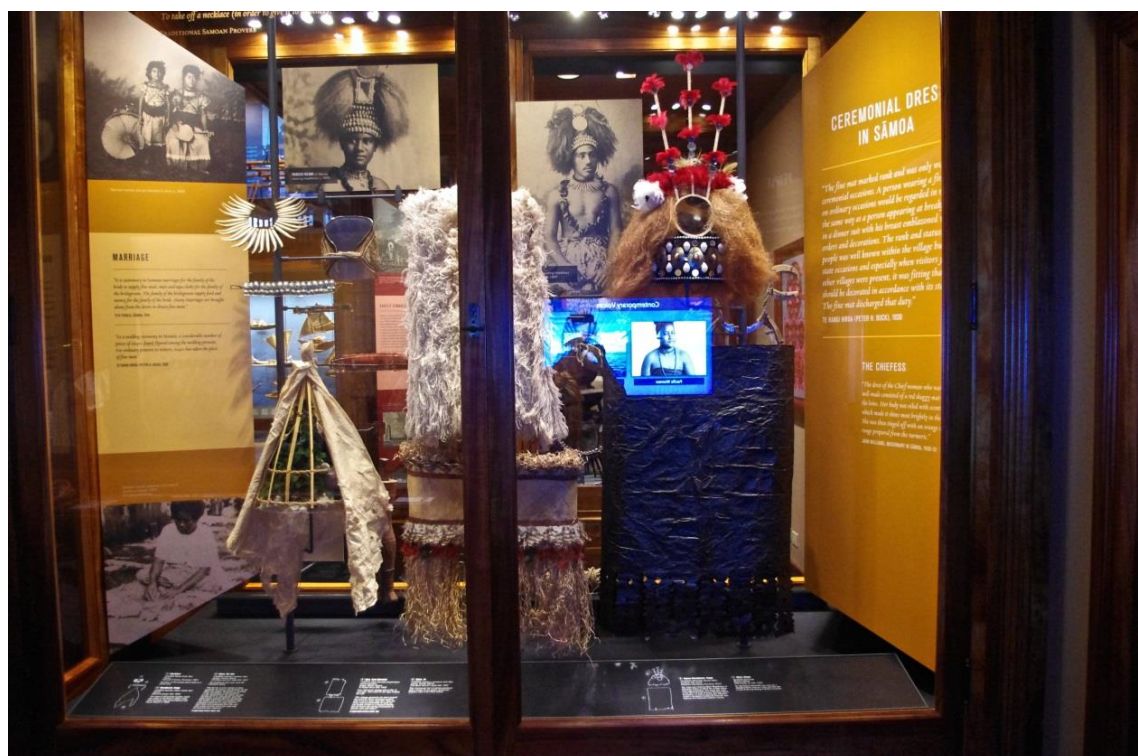


Figure 4.59 PH1-09W *Ceremonial Dress in Sāmoa*. Photograph by Alice Christophe, September 2013





Figure 4.60 PH1-10E *Community*. Photograph by Alice Christophe, September 2013



Figure 4.61 PH1-10W *Chiefs & Leaders*. Photograph by Alice Christophe, September 2013



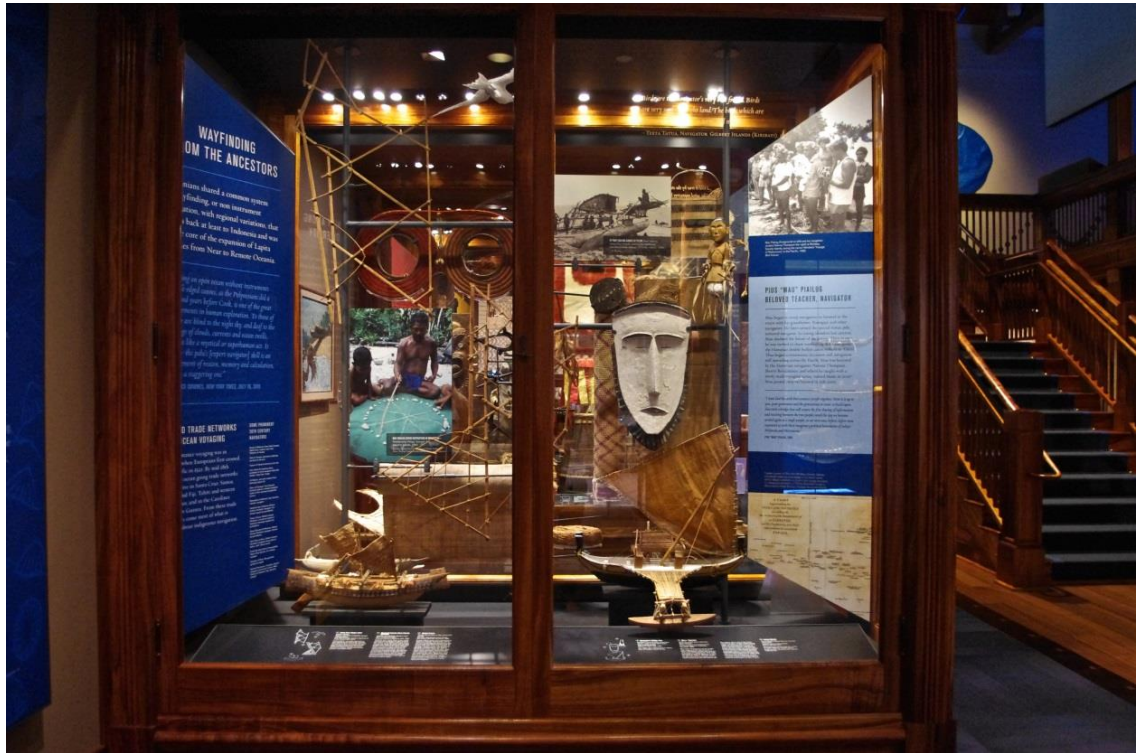
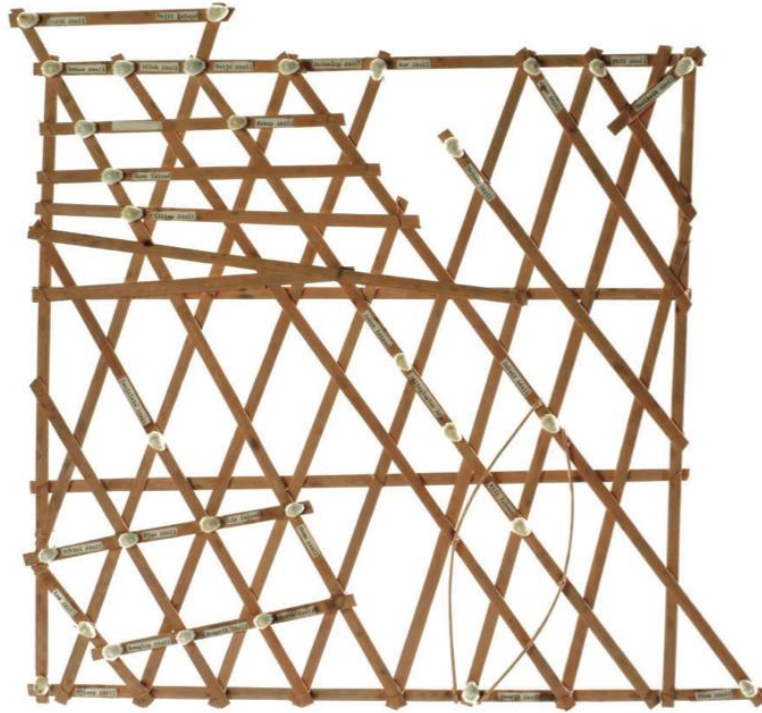


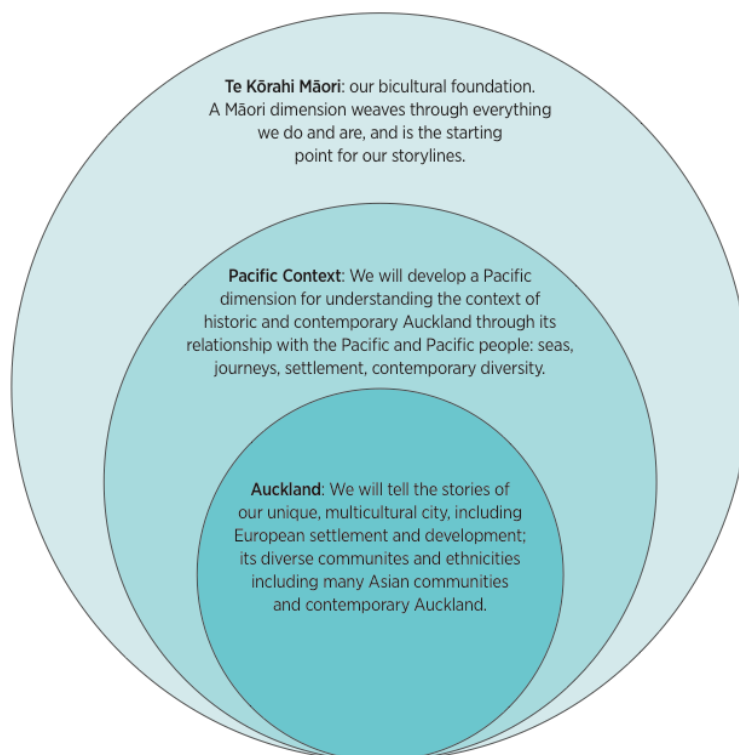
Figure 4.62 PH1-11E *Wayfinding from the Ancestors*. Photograph by Alice Christophe, September 2013



Figure 4.63 PH1-11W *The Santa Cruz Islands Trading Network* (Lower R). Photograph by Alice Christophe, September 2013



**Figure 4.64** Marshalllese Rebbelib Stick Chart, AM collections. Content Waka Report 2011: 22.  
Artefact number: 1998.1317



**Figure 4.65** Bicultural Foundation Te Korahi Māori, AM. *Future Museum*, 2012: 12



NURTURE THE RELATIONSHIP  
**TEU LE VĀ**  
THE PACIFIC DIMENSION AT AUCKLAND WAR MEMORIAL MUSEUM



**AM**  
TAMAKI PAENGA HIRĀ  
AUCKLAND WAR MEMORIAL MUSEUM

Figure 4.66 Front page, Teu Le Vā, The Pacific Dimension, AM. 2013



## **Chapter 5:**

# **Weaving Exhibition Threads, Establishing a Trans-Pacific Culture of Display**



**Figure 5.1** C Cases PH2-04, 05 and 06, Level 2, PH, BPBM. Photograph by Alice Christophe, September 2013



**Figure 5.2** Replicas displayed in PH PH2-05 & PH2-06, Level 2, PH, BPBM. Photograph by Alice Christophe, September 2013

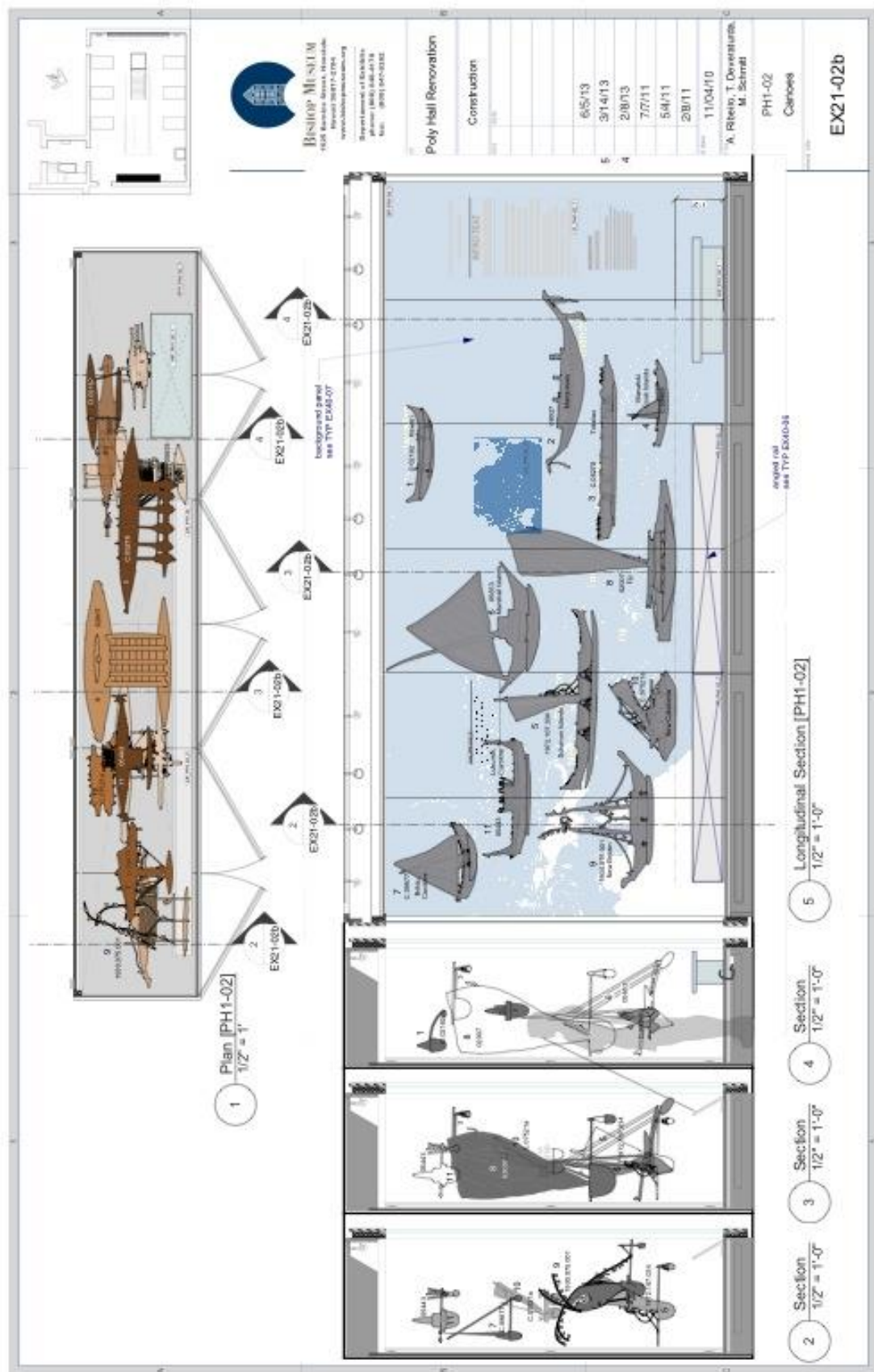


Figure 5.3 Canoe case, layout with map in the background, RAA for PH, 2013





Figure 5.4 Canoe case, Level 1, PH. Photograph by Alice Christophe, September 2014



Figure 5.5 Canoe typology, Landfall, Vaka Moana. AM archives, January 2007



**Figure 5.6** General view, Arctic Studies Center, design by RAA in Anchorage, Alaska. Photograph, RAA, 2010



**Figure 5.7** Pan-Arctic mask display case, Arctic Studies Center, design by RAA in Anchorage, Alaska. Photograph, RAA, 2010





**Figure 5.8** First layer of red paint applied onto PH's collective mural. Mural making video, Level 1, PH, May 2013



**Figure 5.9** The kumu painting the last layers of PH's mural. Mural making video, Level 1, PH, May 2013





**Figure 5.10** Anu'u nu'u ka'ike by Halau Paheona Level 1, PH. Photograph by Alice Christophe, September 2013



**Figure 5.11** Kanyak by Joseph Poukiou and Jean-Michel Boone, Austronesian Park, KMFA, 2007. Photograph, TCC archives



**Figure 5.12** Jim Vivieaere weeding the Polynesian triangle in the Austronesian Park, KMFA, 2007. Photograph, KMFA archives



**Figure 5.13** The artists installing one of the tougo. Landscape by Jim Vivieaere and Michel Tuffery, Austronesian Park, KMFA, 2007. Photograph, KMFA archives





**Figure 5.14** Landscape by Jim Vivieaere and Michel Tuffery, Austronesian Park, KMFA, 2007. Photograph, KMFA archives



**Figure 5.15** Landscape by Jim Vivieaere and Michel Tuffery, Austronesian Park, KMFA, 2007. Photograph, KMFA archives





**Figure 5.16** Jack Gray hongi Marques Hanalei Marzan before starting the performance *Te Reinga* on the Grand Unveiling day. Photograph by Alice Christophe, 21 September 2013



**Figure 5.17** Rehearsal of *Te Reinga*, with Marcus, Kealoha, Moses, Moani, Mickael, Kamalu, Kapaliku, Lissa, Hanalei and Loko. Photograph by Alice Christophe, 18 September 2013



**Figure 5.18** Rehearsal of *Te Reinga*, with Hanalei, Kapaliku, Mickael, Kealoha and Moses. Photograph by Alice Christophe, 18 September 2013





**Figure 5.19** Rehearsal of *Te Reinga*, rope duet with Marcus Quiniones and Lissa Gendreau.  
Photograph by Alice Christophe, 18 September 2013





**Figure 5.20** *Te Reinga* collective gathering at the lo'i/taro field in Kaneohe. Photograph by Jack Gray, September 2013



**Figure 5.21** *Te Reinga* performed for Pacific Hall Grand Unveiling. BPBM archives, 21 September 2013

## **Chapter 6:**

# **Curating versus Mapping: Limitations and Impacts of Connective Narratives**





**Figure 6.1** General view, PH, BPBM. Photography by Alice Christophe, September 2013



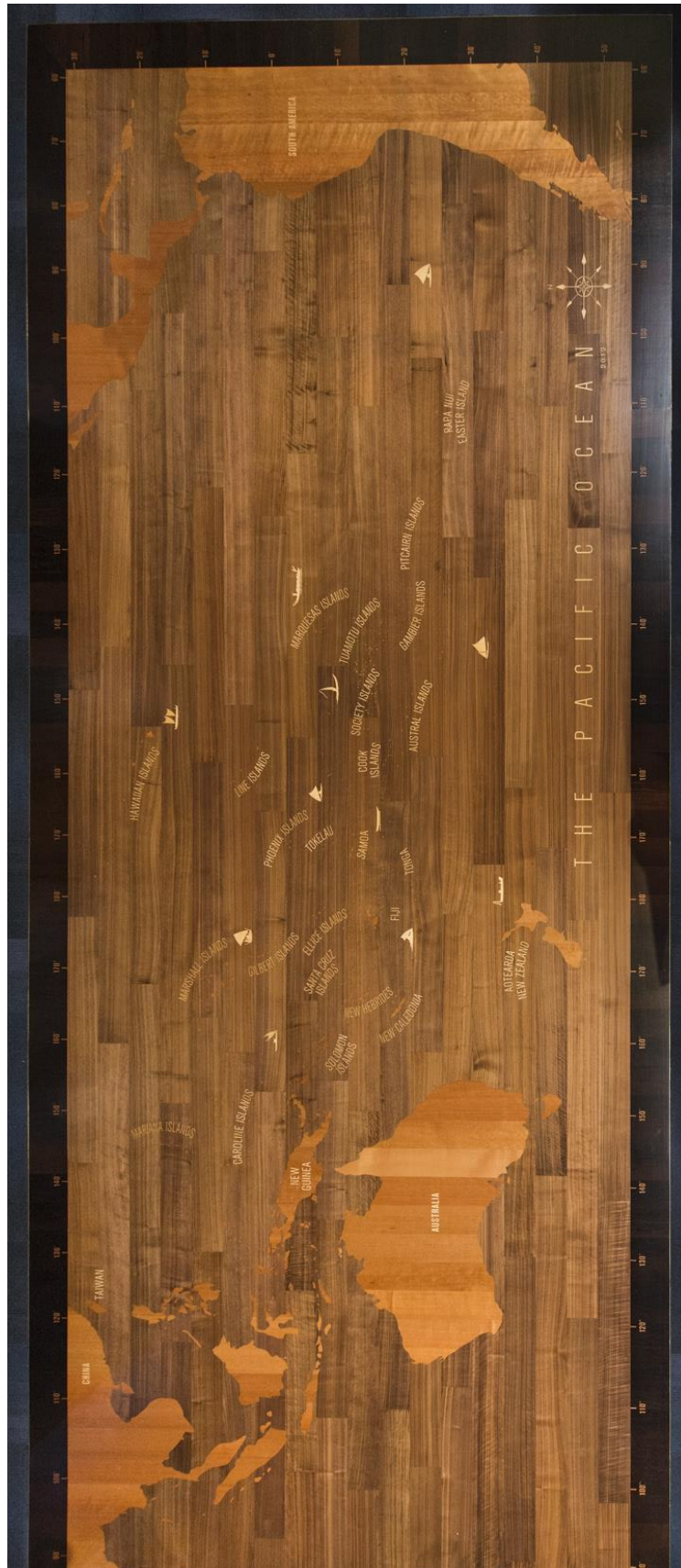


Figure 6.2 The Pacific Ocean, wooden floor map, PH, BPBM. BPBM archives, PHfolder, 2013



Figure 6.3 RAA rendering, PH, BPBM. Visualised concepts, May 2010



## PH1 CASE SYSTEM



**Figure 6.4** RAA layout, PH floor map, BPBM. BPBM archives, PHfolder, October 2010





**Figure 6.5** Map of the Pacific displayed in Hawaiian Hall, BPBM. Photography by Alice Christophe, September 2013



**Figure 6.6** Settlement of Oceania, migration map, PH, BPBM. Photography by Alice Christophe, September 2013



B. Mus. Poly. Hall.

Bishop Museum, Polynesian Hall, prior to  
remodelling in 1956 (P. BRIGHAM COLLECTION) A408

A408

Figure 6.7 PH with a map of the Pacific along the west wall, circa 1900. BPBM archives, A408

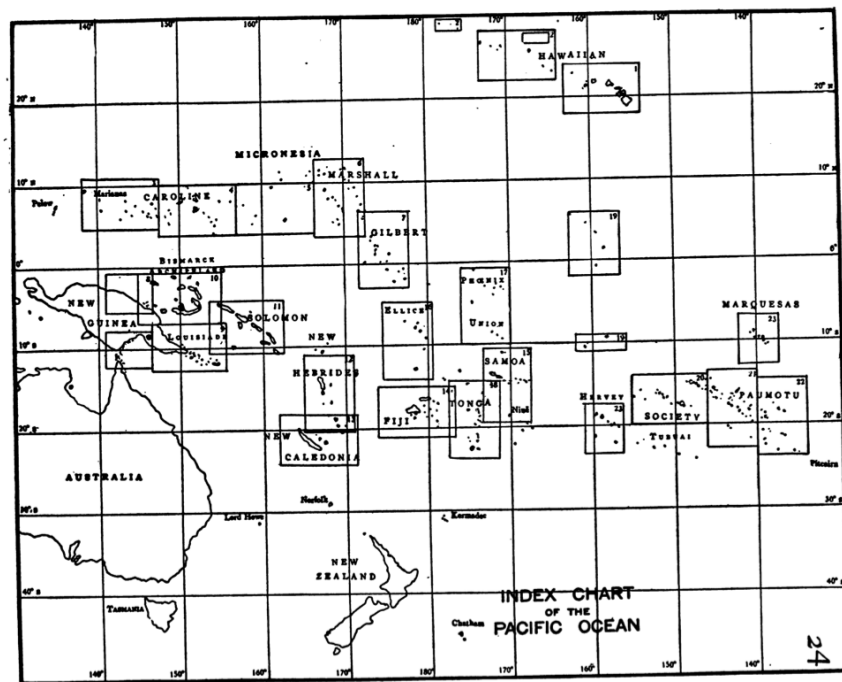
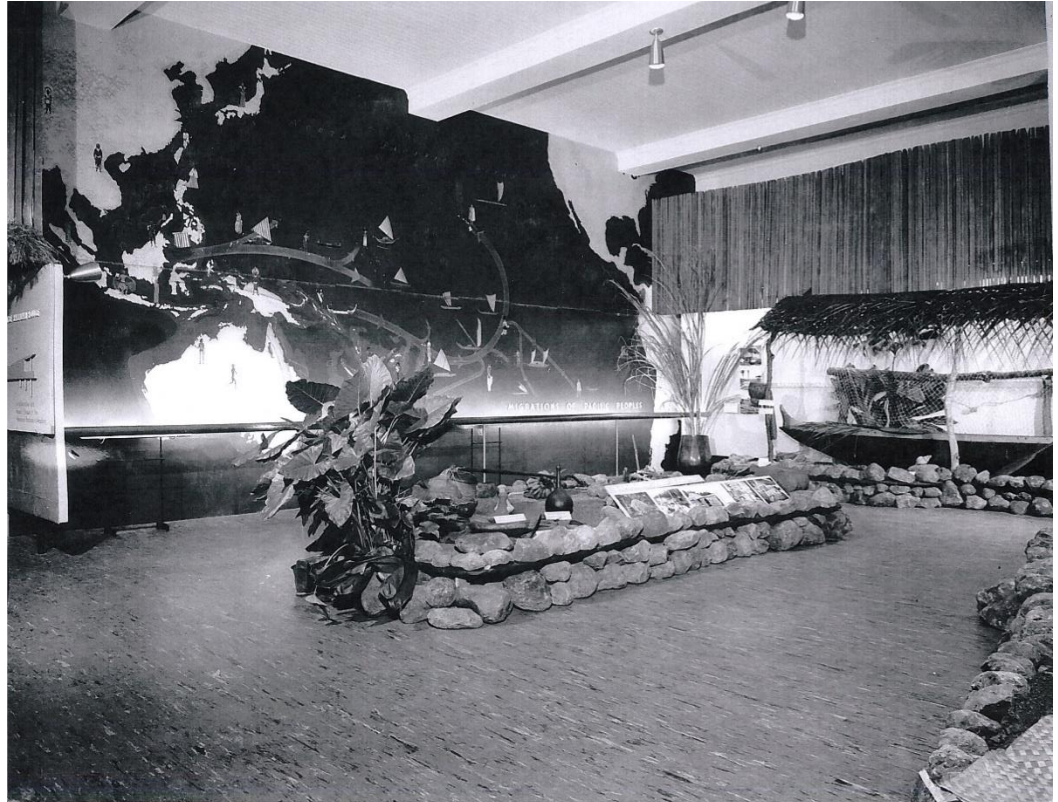


Figure 6.8 *Index Chart of the Pacific Ocean*. Brigham, 1900: 173





**Figure 6.9** Map showing Migration of Pacific Peoples, Hawaiian Vestibule, BPBM, August 1954. BPBM archives, Neg.23558



**Figure 6.10** Spoehr showing the new map of the Pacific by Rockwood, Hawaiian Vestibule, BPBM, August 1954. BPBM archives, book 70:74



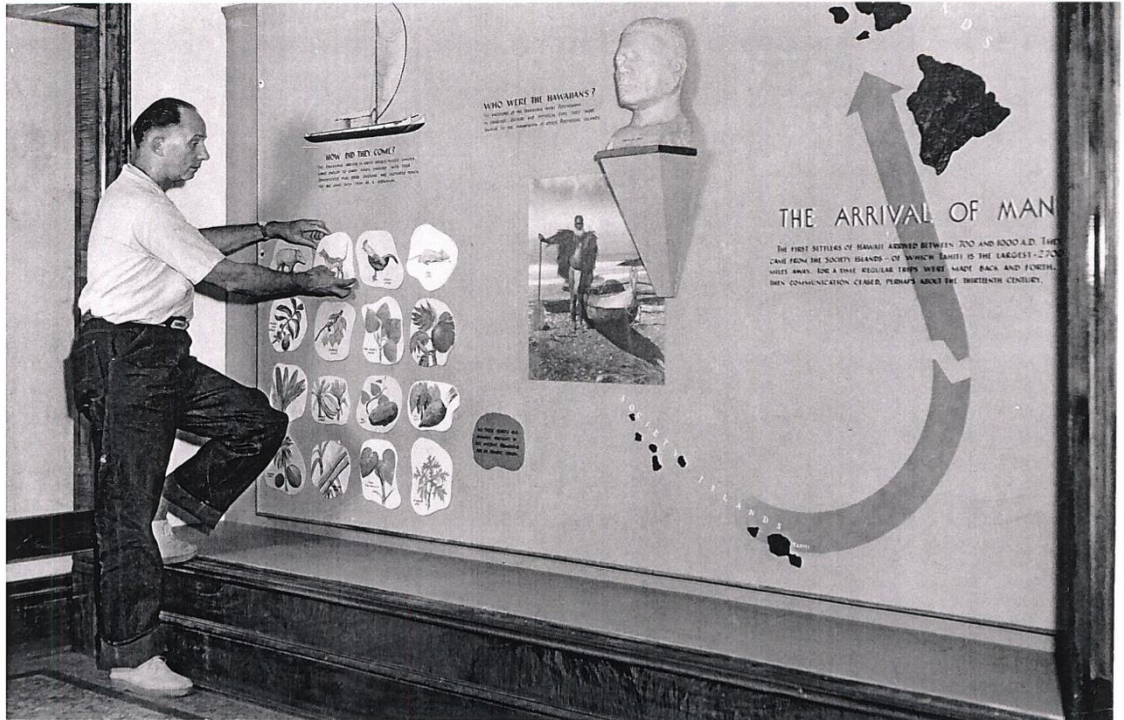
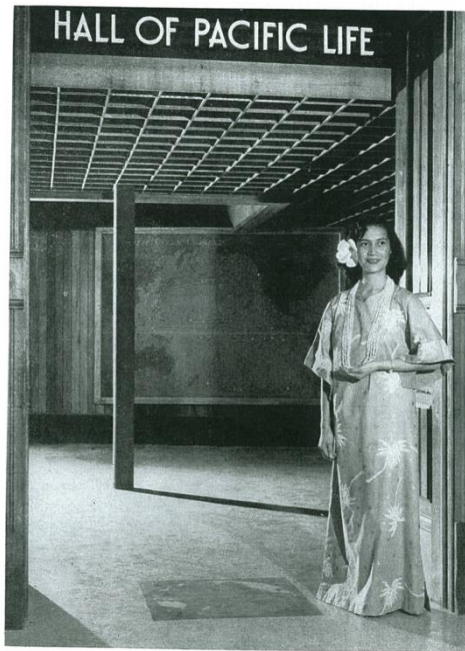


Figure 6.11 The arrival of Man, Hawaiian Hall, 1955. The Conch Shell, 7 March 1955

16

Bernice P. Bishop Museum



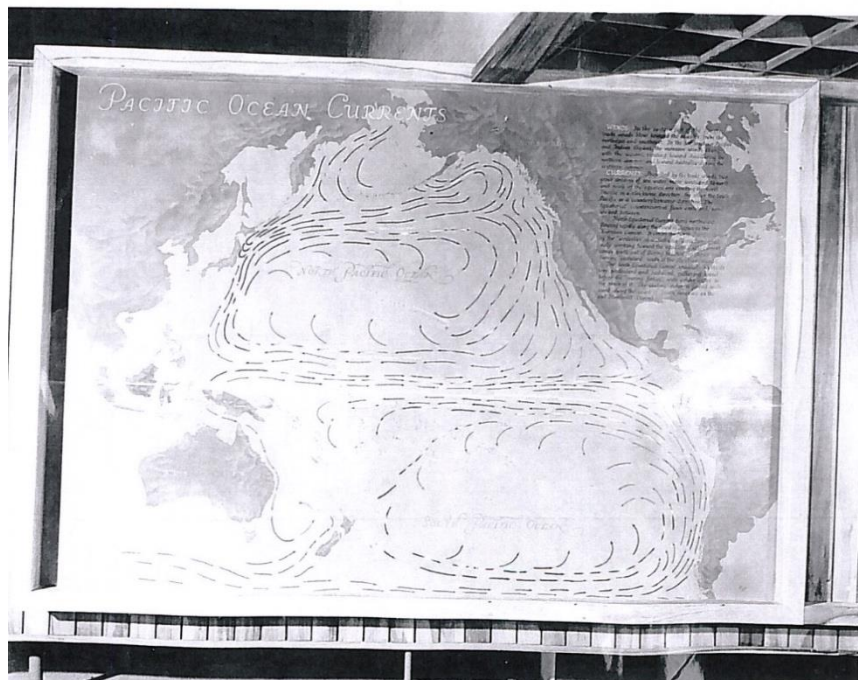
WINONA DUVAUCHELLE BARRINGER WELCOMES VISITORS TO THE NEW HALL OF PACIFIC LIFE.

Annual Report for 1957  
p. 16  
(entrance to Polynesian Hall  
after remodeling)

Figure 6.12 Map of Pacific Ocean Currents, entrance, Hall of Pacific Life, BPBM, 1957. BPBM archives, PHfolder



**Figure 6.13** Lighting system at the back of the map of Pacific Ocean Currents, Hall of Pacific Life, BPBM, 1957. BPBM archives, PHfolder



**Figure 6.14** Map of Pacific Ocean Currents, Hall of Pacific Life, BPBM, 1957. BPBM archives, 28849





Figure 6.15 Globe in Arts of the South Seas, PH, BPBM, 1967. BPBM archives, PHfolder

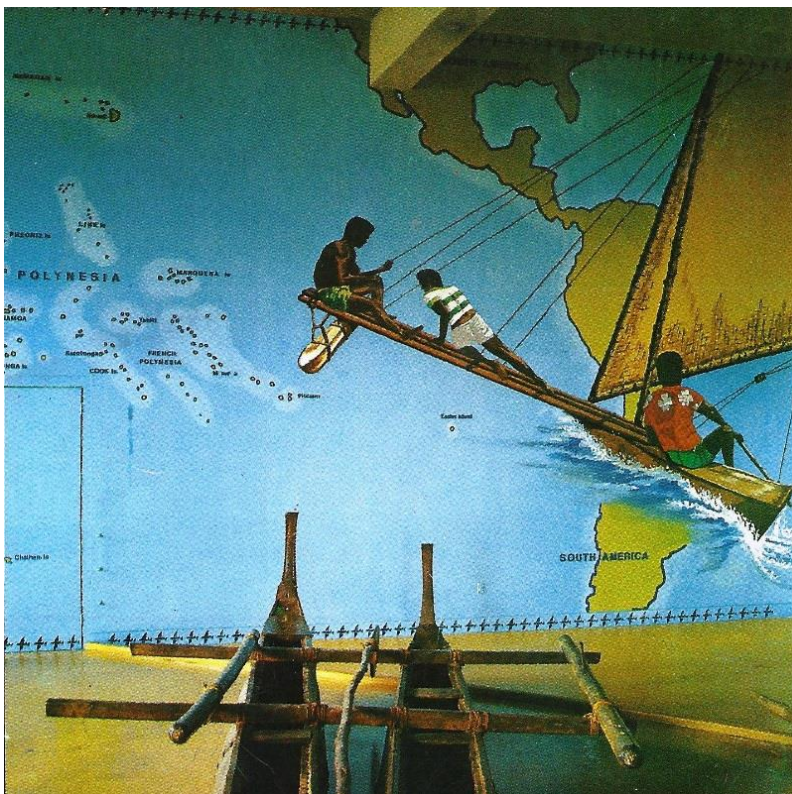


Figure 6.16 Map of the Pacific in the Hall of Oceanic Navigation, AM, circa 1960. AM archives, B1866





**Figure 6.17** Map in the Canoe Hall, 1982-1983, AM. AM archives, AM 93A891.7h



**Figure 6.18** Map in the Canoe Hall, 1982-1983, AM. Richard Wolfe, personal communication



**Figure 6.19** Map of the Pacific Ocean in *Chiefs, Bigmen and Mariners* (1980-2011), BPBM. Photography by Betty Tatar



**Figure 6.20** Map of the Pacific Ocean in *Chiefs, Bigmen and Mariners* (1980-2011), BPBM. Photography by Betty Tatar





Figure 6.21 Pacific mural, Canoe Hall, AM, circa 1990s. AM archives AM 93A891.7h



Figure 6.22 Pacific mural (colour), Canoe Hall, AM, circa 1990s. AM archives, K. Pfeffer (?)





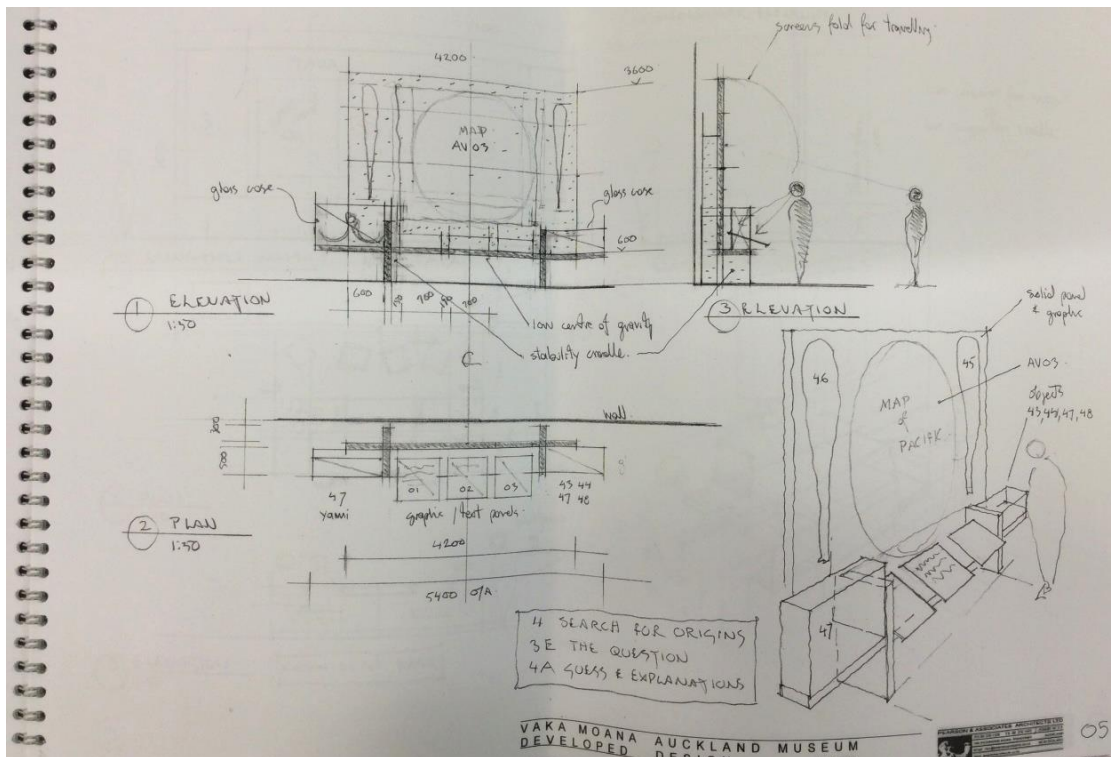
Figure 6.23 Map of the Pacific in *Pacific Lifeways*, AM, circa 1998. AM archives, K. Pfeffer



Figure 6.24 Map of the Pacific in *Pacific Lifeways*, AM. Photograph by Alice Christophe, 2014



**Figure 6.25** Map of the Pacific in *Pacific Masterpieces*, AM, prior to 2014. Photograph by Tanya Wilkinson



**Figure 6.26** Sketches for the map of the Pacific in Vaka Moana, AM. Design by Pearson & Associates, 2006



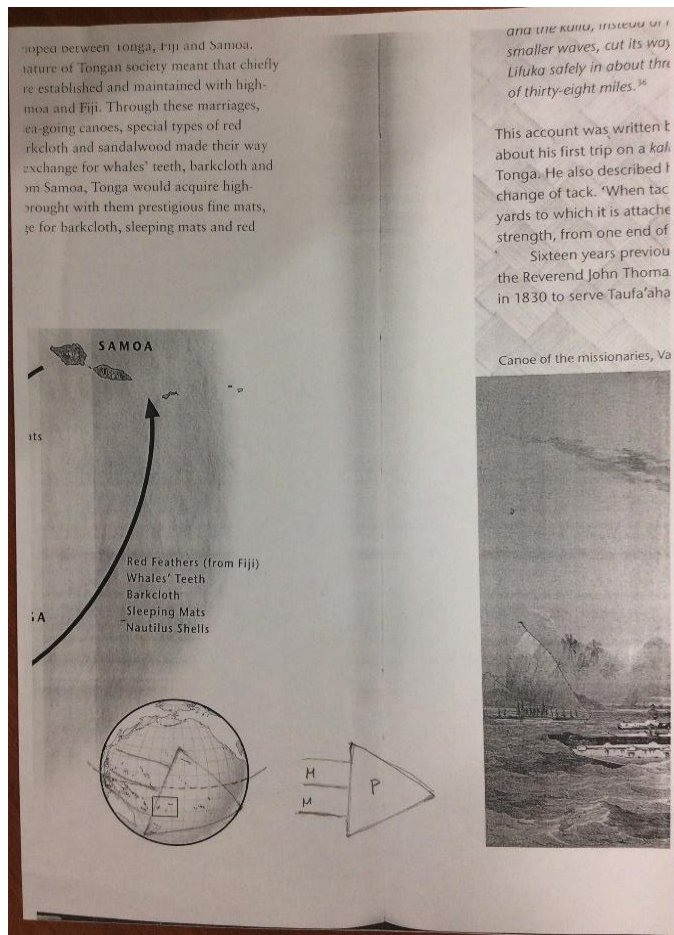


Figure 6.27 Map of the Pacific in Vaka Moana, Navigation, AM. AM archives, 2007

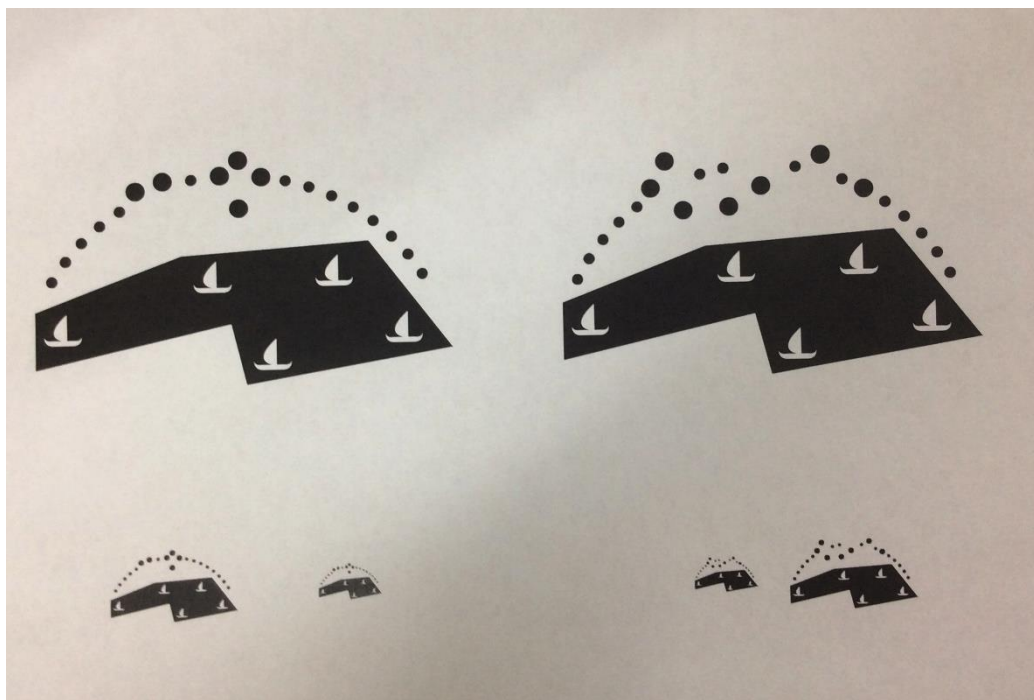


Figure 6.28 Map of the Pacific, educational document, Vaka Moana, AM. AM archives, 2006





**Figure 6.29** Sketches by Ting Ting Chen, copy of VM's catalogue, KMFA. KMFA archives, 2006-2007



**Figure 6.30** Original design for the logo of the CAAP, by Ting Ting chen, KMFA. KMFA archives, 2006-2007

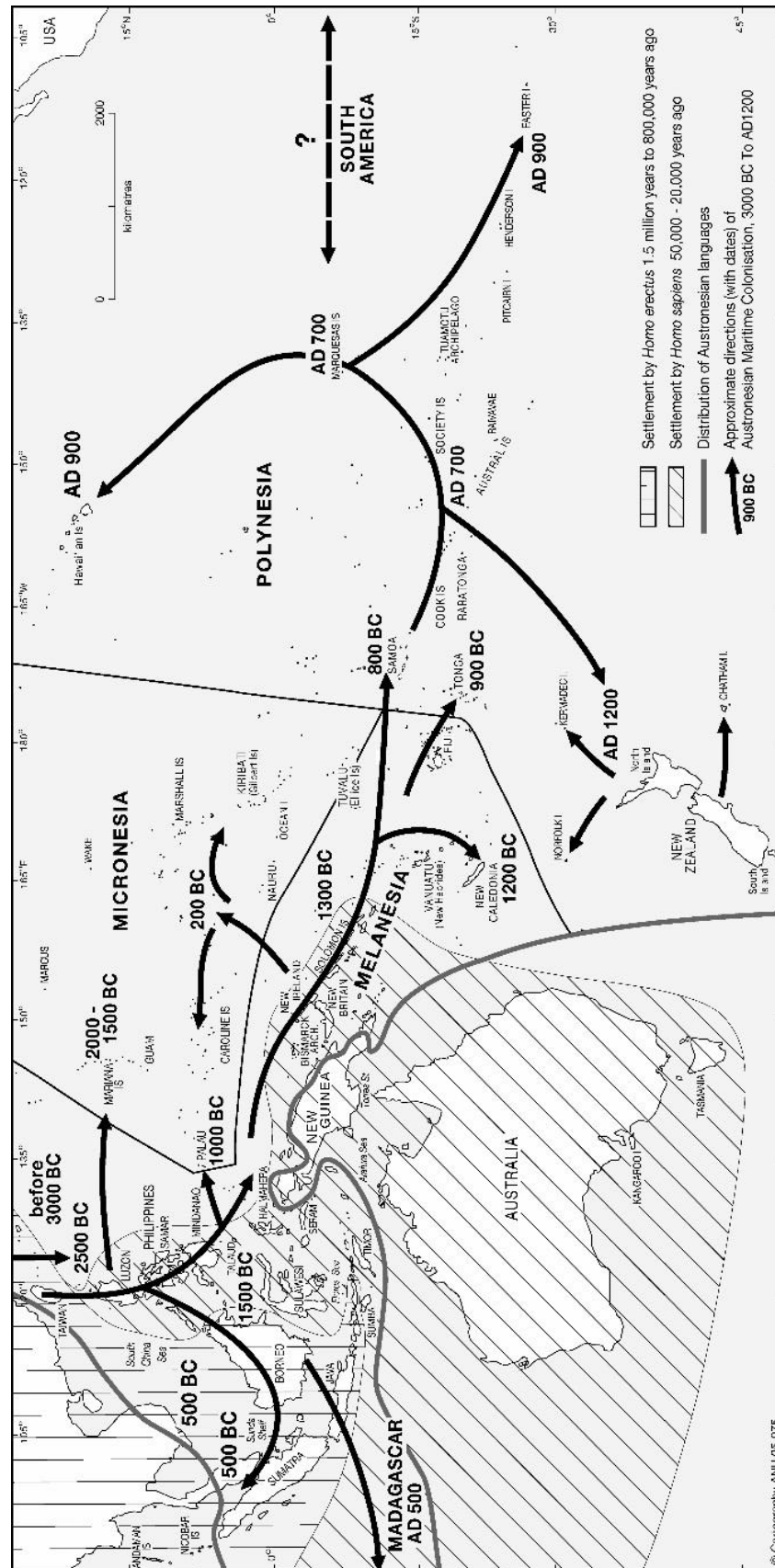


Figure 6.31 ANU map of the settlement of the Pacific, used at the BPBM and at the KMFA. Reproduced in Bellwood, 2013. BPBM archives, PHfolder



Figure 6.32 Map of Austronesia, entrance hall, AOT, KMFA. KMFA archives, 2007

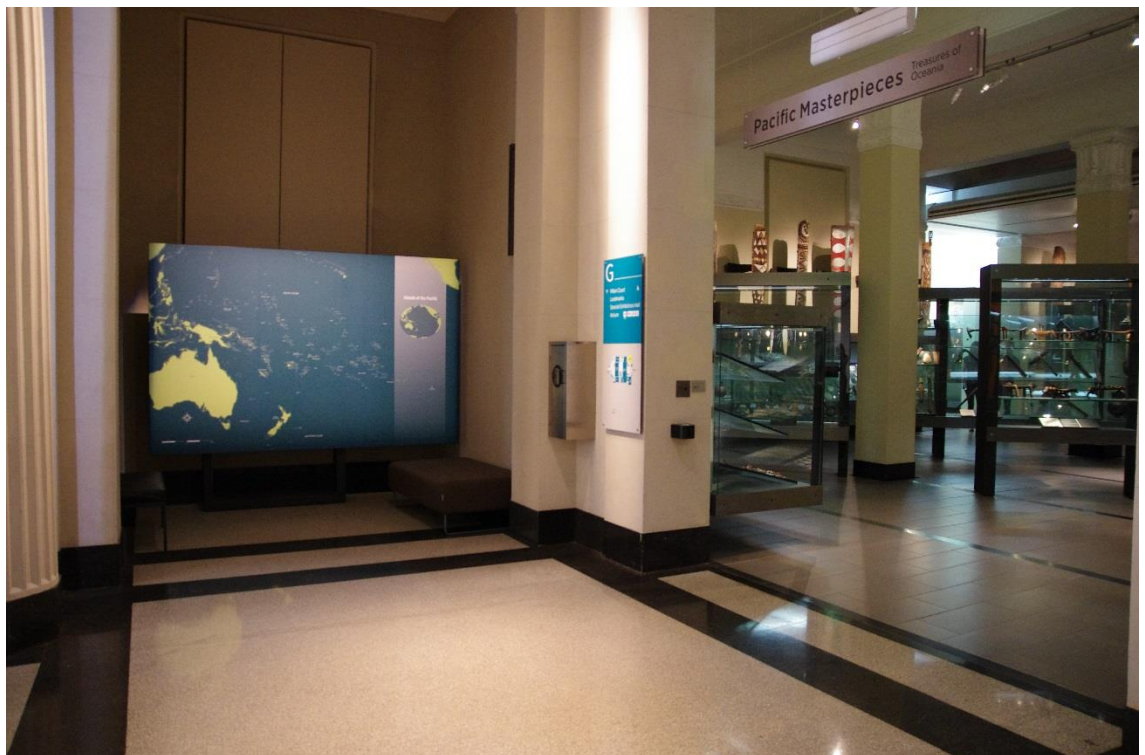


Figure 6.33 *The Islands of the Pacific*, new temporary map for *Pacific Masterpieces*. Photograph by Alice Christophe, March 2016





**Figure 6.34** *The Origin of Polynesians*, new temporary map for the Māori Hall. Photograph by Alice Christophe, March 2016



**Figure 6.35** *Origins of Māori Language*, new temporary map for the Māori Hall. Photograph by Alice Christophe, March 2016



Figure 6.36 Floor map of Austronesia, TGJ, KMFA. KMFA archives, 2009



Figure 6.37 Artists standing on the floor map of Austronesia, TGJ, KMFA. KMFA archives, 2009





**Figure 6.38** Staff opening, the 'ohana and the map, PH, BPBM. Photograph by Alice Christophe, 19 September 2013

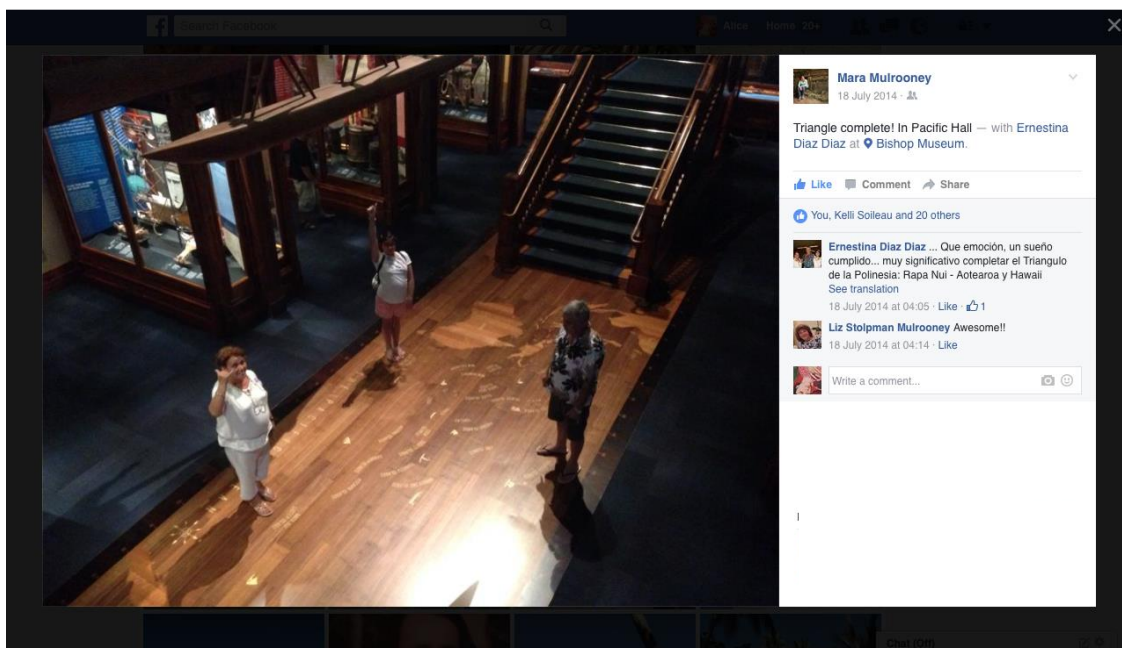


**Figure 6.39** Jack Gray performs on PH's floor map after the staff opening. Photograph by Alice Christophe, 19 September 2013



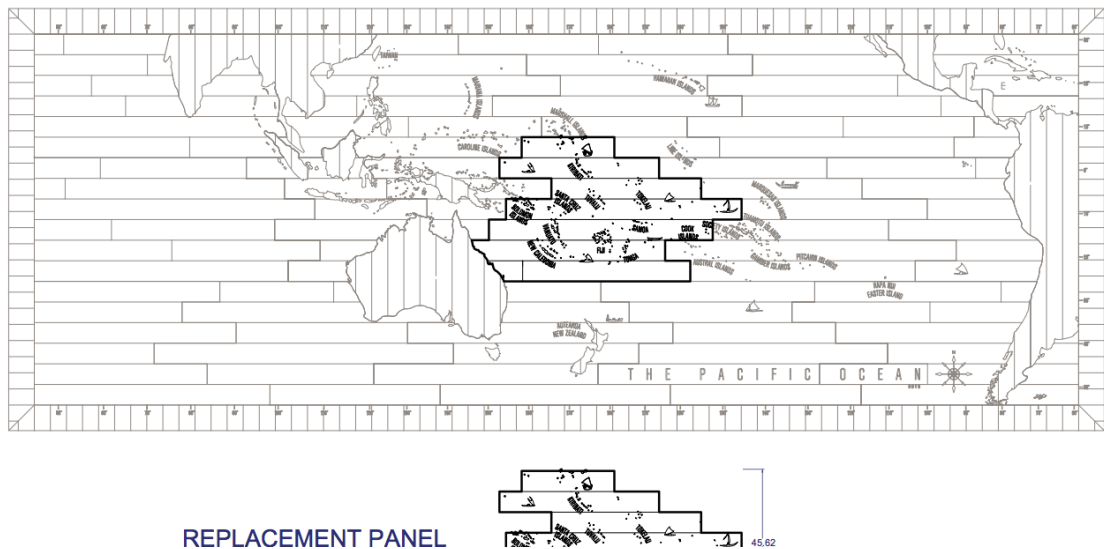


**Figure 6.40** Tava proudly pointing at Tokelau on the Grand Unveiling day, PH, BPBM. Photograph by Alice Christophe, 21 September 2013



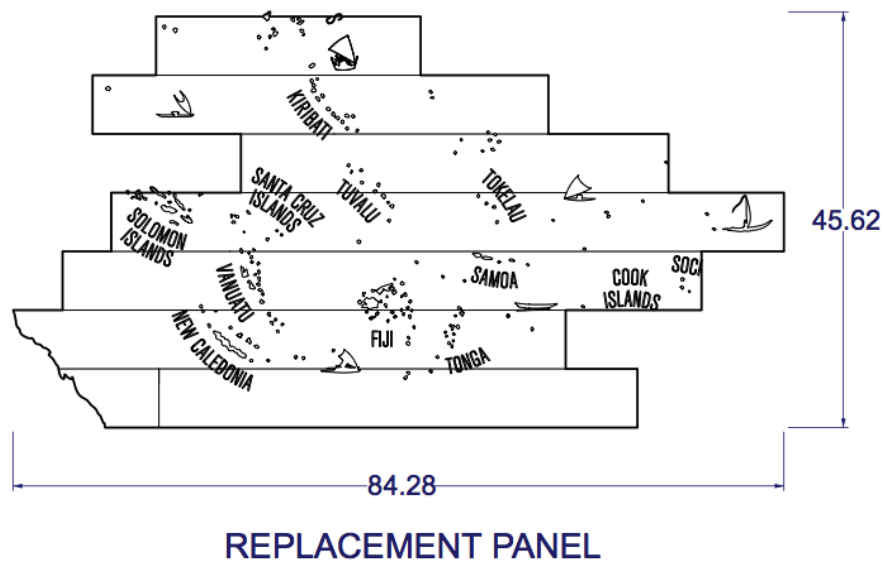
**Figure 6.41** Ernestina, Nina and Salvador, visitors from Rapa Nui reforming the Polynesian triangle, PH, BPBM. FB post, 18 July 2014, courtesy of Mara Mulrooney

Bishop Museum - Pacific Hall floor map REVISION 4-4-2014



**Figure 6.42** Layout of PH's floor map with panel selected for removal. BPBM archives, 4 April 2014

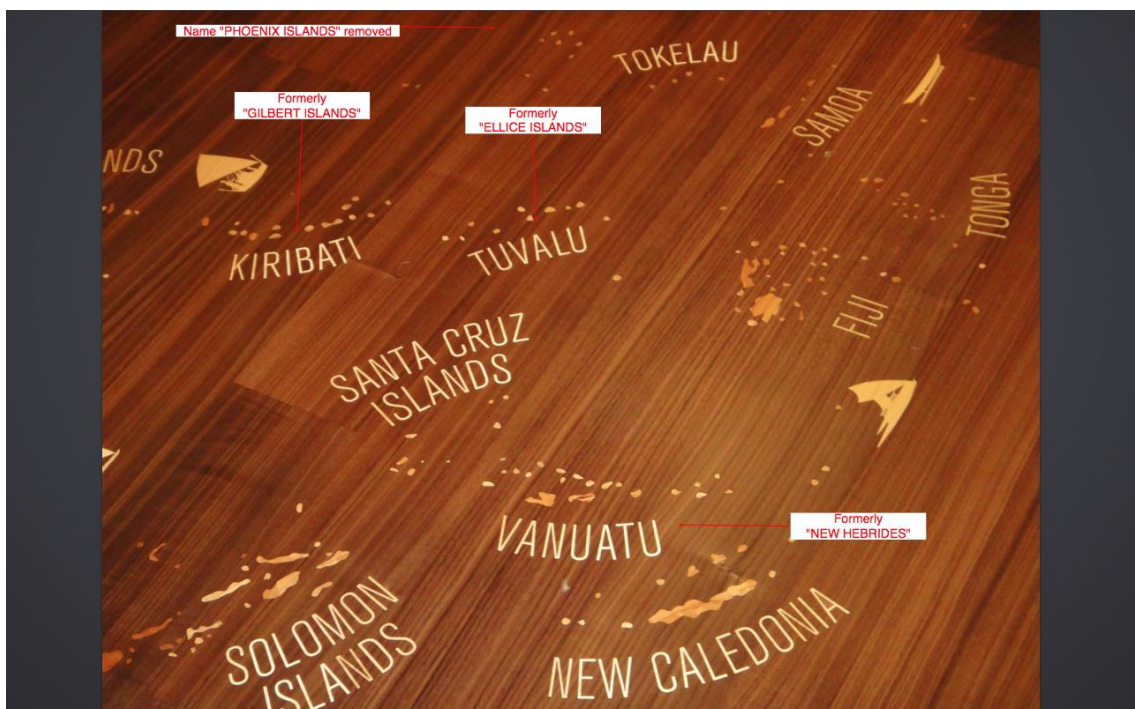
**SHAYN ALLEN MARQUETRY**  
Bishop Museum - Pacific Hall floor map REVISION 4-4-2014



**Figure 6.43** Replacement panel with new labelling, by Shayn Allen Marquetry. BPBM archives, 4 April 2014



**Figure 6.44** Reconstruction of PH's floor map, BPBM. Photography by Dave Kemble, January 2015



**Figure 6.45** Map after reconstruction with former name tags by Dave Kemble. Dave Kemble, personal communication, 13 March 2015